

HILLCREST ACADEMY LANDSCAPE PLANS

**PINNACLE
DESIGN, INC**

1048 N. 44th Street
 Suite 200-A Phoenix, AZ 85008
 (602)952-8885 FAX (602)952-8885



PLANT LEGEND

SYMBOL	BOTANICAL NAME	COMMON NAME	SIZE	QTY	COMMENTS
	CAESALPINIA CACALACO	THORNLESS CASCALOTE	24" BOX	7	8" H., 3" W., 1.25' CAL. STAKE IN PLACE
	DALBERGIA SISSOO	SISSOO TREE	24" BOX	34	8" H., 3" W., 1.25' CAL. STAKE IN PLACE
	FRAXINUS VELUTINA	FANTEX ASH	24" BOX	30	8" H., 3" W., 1.00' CAL. STAKE IN PLACE
	PARKINSONIA HYBRID	'DESERT MUSEUM'	15 GAL.	34	4" H., 2" W., .75' CAL. STAKE IN PLACE
	PROSOPIS X PHOENIX	THORNLESS MESQUITE	15 GAL.	26	4" H., 2" W., .075' CAL. STAKE IN PLACE
	CAESALPINIA PULCHERRIMA	RED BIRD OF PARADISE	5 GAL.	20	PLANT AT 4' O.C.
	EREMOPHILA VALENTINE	VALENTINE BUSH	5 GAL.	33	PLANT AT 4' O.C.
	LEUCOPHYLLUM CANDIDUM	THUNDER CLOUD	5 GAL.	26	PLANT AT 3' O.C.
	LEUCOPHYLLUM LAEVIGATUM	CHIHUAHUA SAGE	5 GAL.	77	PLANT AT 4' O.C.
	TECOMA STANS 'GOLD STAR'	YELLOW BELLS	5 GAL.	5	PLANT AT 4' O.C.
	AGAVE GEMINIFLORA	TWIN-FLOWERED AGAVE	5 GAL.	12	PLANT AT 4' O.C.
	DASYLIRION WHEELERI	DESERT SPOON	5 GAL.	16	PLANT AT 4' O.C.
	MUHLENBERGIA CAPILLARIS	REGAL MIST	5 GAL.	38	PLANT AT 4' O.C.
	CONVOLVULUS CNEORUM	BUSH MORNING GLORY	1 GAL.	21	PLANT AT 2' O.C.
	LANTANA CAMARA	NEW GOLD LANTANA	1 GAL.	81	PLANT AT 4' O.C.
	RUELLIA BRITTONIANA	'KATIE' RUELLIA	1 GAL.	39	PLANT AT 3' O.C.
	TURF	BERMUDA SEED		87,843 S.F.	
	INERT GROUNDCOVER				
	DECOMPOSED GRANITE				
	CONCRETE HEADER				

SHRUBS

	CAESALPINIA PULCHERRIMA	RED BIRD OF PARADISE	5 GAL.	20	PLANT AT 4' O.C.
	EREMOPHILA VALENTINE	VALENTINE BUSH	5 GAL.	33	PLANT AT 4' O.C.
	LEUCOPHYLLUM CANDIDUM	THUNDER CLOUD	5 GAL.	26	PLANT AT 3' O.C.
	LEUCOPHYLLUM LAEVIGATUM	CHIHUAHUA SAGE	5 GAL.	77	PLANT AT 4' O.C.
	TECOMA STANS 'GOLD STAR'	YELLOW BELLS	5 GAL.	5	PLANT AT 4' O.C.

ACCENTS

	AGAVE GEMINIFLORA	TWIN-FLOWERED AGAVE	5 GAL.	12	PLANT AT 4' O.C.
	DASYLIRION WHEELERI	DESERT SPOON	5 GAL.	16	PLANT AT 4' O.C.
	MUHLENBERGIA CAPILLARIS	REGAL MIST	5 GAL.	38	PLANT AT 4' O.C.

GROUNDCOVER

	CONVOLVULUS CNEORUM	BUSH MORNING GLORY	1 GAL.	21	PLANT AT 2' O.C.
	LANTANA CAMARA	NEW GOLD LANTANA	1 GAL.	81	PLANT AT 4' O.C.
	RUELLIA BRITTONIANA	'KATIE' RUELLIA	1 GAL.	39	PLANT AT 3' O.C.

TURF

	TURF	BERMUDA SEED		87,843 S.F.	
--	------	--------------	--	-------------	--

INERT GROUNDCOVER

	INERT GROUNDCOVER				
--	-------------------	--	--	--	--

DECOMPOSED GRANITE

	DECOMPOSED GRANITE				
--	--------------------	--	--	--	--

CONCRETE HEADER

	CONCRETE HEADER				
--	-----------------	--	--	--	--

NOTES:

- CONTRACTOR TO VERIFY ALL QUANTITIES.
- CONTRACTOR TO PROVIDE DECOMPOSED GRANITE SAMPLES TO BE MATCHED TO THE PROJECT'S COLOR AND FINISH.
- MAINTAIN 3" TO 5" TREE AND SHRUB CLEARANCE FROM WALLS.
- MAINTAIN 1" TO 2" TREE AND SHRUB CLEARANCE FROM SIDEWALKS.
- ALL TREES SHALL COMPLY WITH THE LATEST AMENDED EDITION OF THE ARIZONA NURSERY REGULATIONS (SECTION 180308) (R) ZONING CODE.

PROJECT CONSULTANTS

DISCIPLINE	CONTACT INFORMATION
DEVELOPER:	AMERICA CHARTER DEVELOPMENT SUITE 100 SPRINGVILLE, UT 84603 CONTACT: MCKAY MORLEY PHONE: 801.489.9535
CIVIL ENGINEER:	BOWMAN CONSULTING GROUP, LTD. SUITE 100 PEORIA, IL 61621 PHONE: 602.676.4438 CONTACT: GEORGE SWARSTAD
LANDSCAPE ARCHITECT:	PINNACLE DESIGN, INC. 1048 NORTH 44th STREET, SUITE 200 PHOENIX, AZ 85008 CONTACT: ED LORDBEN PHONE: 602.952.8885

VICINITY MAP



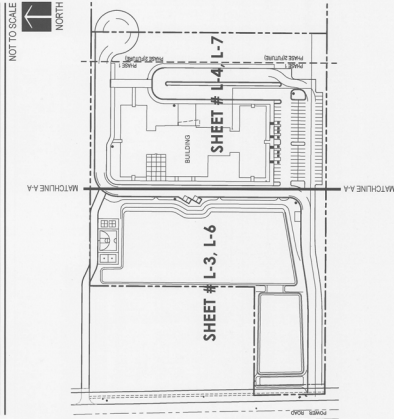
SHEET INDEX

SHEET	TITLE
L-1	COVER SHEET
L-2	GENERAL NOTES
L-3	PLANTING PLAN
L-4	PLANTING PLAN
L-5	IRRIGATION NOTES
L-6	IRRIGATION PLAN
L-7	IRRIGATION PLAN
L-8	PLANTING DETAILS
L-9	IRRIGATION DETAILS
L-10	IRRIGATION DETAILS
L-11	IRRIGATION SPECIFICATIONS
L-12	IRRIGATION SPECIFICATIONS

SITE DATA

ZONING:	AG
SITE AREA (PHASE 1):	49,098 SQ. FT.
RIGHT-OF-WAY LANDSCAPING:	0 S.F.
ON-SITE LANDSCAPE AREA:	205,820 S.F.
TURF AREA:	82,333 S.F. (40.0%)
TOTAL LANDSCAPING:	205,820 S.F.

KEY MAP



COVER SHEET

Drawn By: NR
 Job No: 14013
 Date: 4.8.14

L-1

24 of 113

HILLCREST ACADEMY

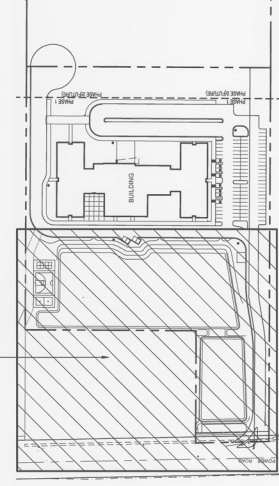
3761 S. POWER ROAD, MESA, ARIZONA



PLANT LEGEND

SYMBOL	BOTANICAL NAME	COMMON NAME	SIZE
TREES			
	CAESALPINIA CACALACO SMOOTHIE	THORNLESS CASCALOTE	24" BOX
	DALBERGIA SISSOO	SISSOO TREE	24" BOX
	FRAXINUS VELUTINA RO GRANDE	FANTEX ASH	24" BOX
	PARKINSONIA HYBRID	DESERT MUSEUM	15 GAL
	PROSOPIS X PHOENIX	THORNLESS MESQUITE	15 GAL
SHRUBS			
	CAESALPINIA PULCHERRIMA	RED BIRD OF PARADISE	5 GAL
	EREMOPHILA VALENTINE	VALENTINE BUSH	5 GAL
	LEUCOPHYLLUM LAEVIGATUM	CHIHUAHUA SAGE	5 GAL
	RUPELLIA BRITTONIANA	BRITISH RUELLIA	5 GAL
	TECOMA STANS GOLD STAR	YELLOW BELLS	5 GAL
ACCENTS			
	TWIN-FLOWERED AGAVE		5 GAL
	DESERT SPOON		5 GAL
	RED YUCCA		5 GAL
	REGAL MIST		5 GAL
GROUNDCOVER			
	BUSH MORNING GLORY		1 GAL
	NEW GOLD LANTANA		1 GAL
	KATIE RUELLIA		1 GAL
TURF			
	BERMUDA SEED		
	INERT GROUNDCOVER		
	DECOMPOSED GRANITE	1/4" MINUS, APACHE BROWN COLOR	
	CONCRETE HEADER	PLAIN CONCRETE	

- NOTES:**
- CONTRACTOR TO VERIFY ALL QUANTITIES AND SPECIFICATIONS.
 - SEE ARCHITECT'S PLAN FOR GRANITE SAMPLES TO LANDSCAPE ARCHITECT FOR APPROVAL.
 - MAINTAIN 3' TO 5' TREE AND SHRUB CLEARANCE FROM WALLS.
 - MAINTAIN 1' TO 2' TREE AND SHRUB CLEARANCE FROM SIDEWALKS.
 - ALL TREES SHALL COMPLY WITH THE LATEST AMENDED ASSOCIATION-RECOMMENDED TREE SPECIFICATIONS, SEE SECTION 1903(9) (a) ZONING CODE.



KEY MAP

NORTH

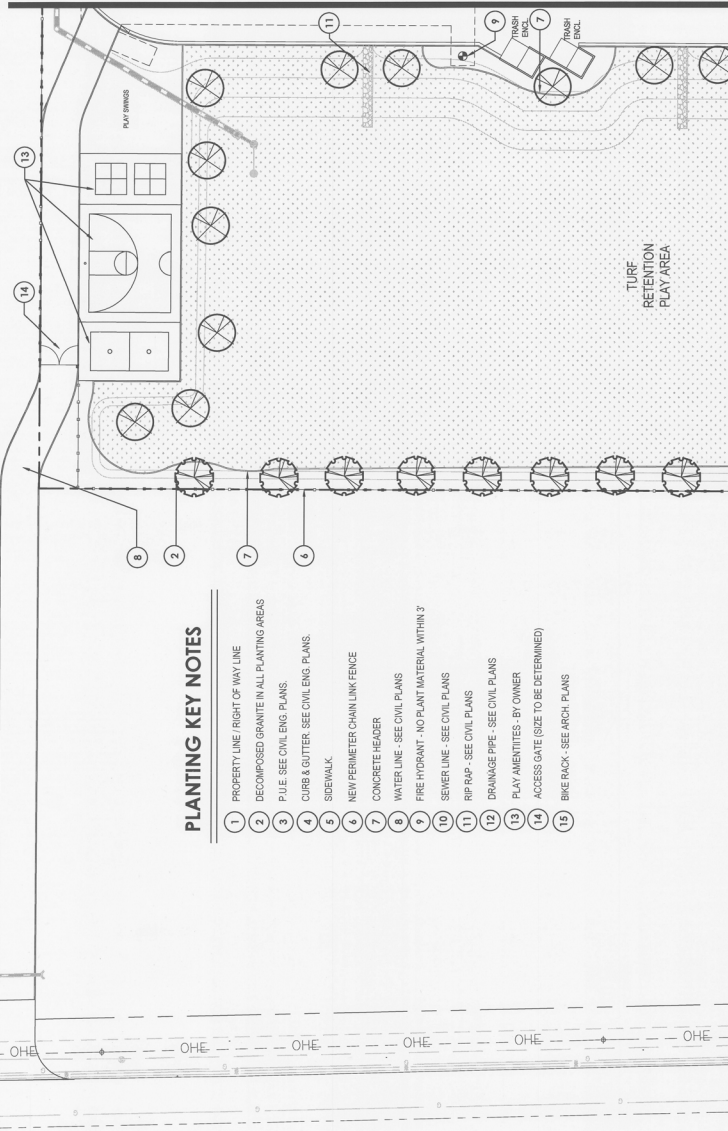
NORTH TO SCALE

SCALE: 1" = 30'-0"

0 30' 60' 120'

CALL THE DESIGNERS
 602-263-1100
 1-800-STAKE-IT
 (OUTSIDE MESA/COUNTY)

PLANTING KEY NOTES



- PROPERTY LINE / RIGHT OF WAY LINE
- DECOMPOSED GRANITE IN ALL PLANTING AREAS
- P.U.E. SEE CIVIL ENG. PLANS.
- CURB & GUTTER - SEE CIVIL ENG. PLANS.
- SIDEWALK
- NEW PERIMETER CHAIN LINK FENCE
- CONCRETE HEADER
- WATER LINE - SEE CIVIL PLANS
- FIRE HYDRANT - NO PLANT MATERIAL WITHIN 3'
- SEWER LINE - SEE CIVIL PLANS
- RIP RAP - SEE CIVIL PLANS
- DRAINAGE PIPE - SEE CIVIL PLANS
- PLAY AMENITIES - BY OWNER
- ACCESS GATE (SIZE TO BE DETERMINED)
- BIKE RACK - SEE ARCH. PLANS

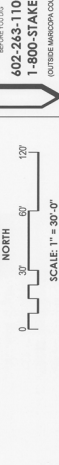
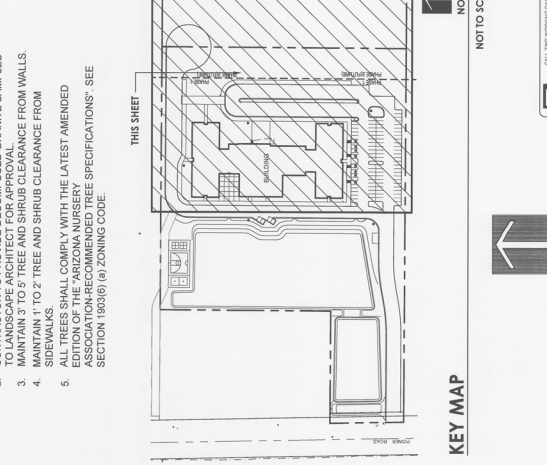
PLANTING PLAN

SYMBOL	BOTANICAL NAME	COMMON NAME	SIZE
TREES			
(Symbol)	CAESALPINIA CACALACO SMOOTHIE	THORNLESS CASCALOTE	24" BOX
(Symbol)	DALBERGIA SISSOO	SISSOO TREE	24" BOX
(Symbol)	FRAXINUS VELUTINA 'RIO GRANDE'	FANTEIX ASH	24" BOX
(Symbol)	PARKINSONIA HYBRID	DESERT MUSEUM	15 GAL
(Symbol)	PROSOPIS 'X' PHOENIX®	THORNLESS MESQUITE	15 GAL
SHRUBS			
(Symbol)	CAESALPINIA PULCHERRIMA	RED BIRD OF PARADISE	5 GAL
(Symbol)	LEUCOPHYLLUM CANADICUM	THUNDER CLOUD	5 GAL
(Symbol)	LEUCOPHYLLUM LAEVIGATUM	CHIHUAHUA SAGE	5 GAL
(Symbol)	RUELLIA BRITTONIANA	BRITISH RUELLIA	5 GAL
(Symbol)	TECOMA STANS 'GOLD STAR'	YELLOW BELLS	5 GAL
ACCENTS			
(Symbol)	AGAVE GEMMIFLORA	TWIN-FLOWERED AGAVE	5 GAL
(Symbol)	DASYLIRION WHEELERI	DESERT SPOON	5 GAL
(Symbol)	HESPERALOE PARVIFLORA	RED YUCCA	5 GAL
(Symbol)	MULLENBERGIA CAPILLARIS	REGAL MIST	5 GAL
GROUNDCOVER			
(Symbol)	CONVOLVULUS ONEORUM	BUSH MORNING GLORY	1 GAL
(Symbol)	LANTANA CAMARA	'NEW GOLD' LANTANA	1 GAL
(Symbol)	RUELLIA BRITTONIANA	'KATE' RUELLIA	1 GAL
(Symbol)	BERMUDA SEED		

PLANTING KEY NOTES

- PROPERTY LINE / RIGHT OF WAY LINE
- DECOMPOSED GRANITE IN ALL PLANTING AREAS
- P.U.E. SEE CIVIL ENG. PLANS
- CURB & GUTTER. SEE CIVIL ENG. PLANS
- SIDEWALK
- NEW PERIMETER CHAIN LINK FENCE
- CONCRETE HEADER
- WATER LINE - SEE CIVIL PLANS
- FIRE HYDRANT - NO PLANT MATERIAL WITHIN 3'
- SEWER LINE - SEE CIVIL PLANS
- RIP RAP - SEE CIVIL PLANS
- DRAINAGE PIPE - SEE CIVIL PLANS
- PLAY AMENITIES - BY OWNER
- ACCESS GATE (SIZE TO BE DETERMINED)
- BIKE RACK - SEE ARCH PLANS

PLANTING PLAN



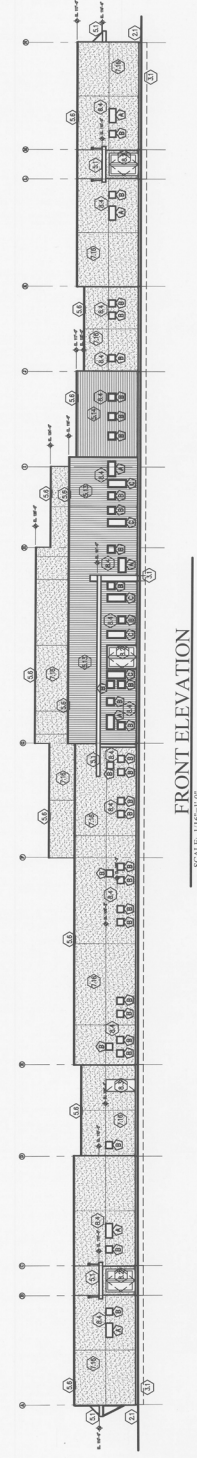
KEY MAP
 NORTH
 NOT TO SCALE
 SCALE 1" = 30'-0"

PLANTING PLAN
 3761 S. POWER ROAD, MESA, ARIZONA
 HILLCREST ACADEMY

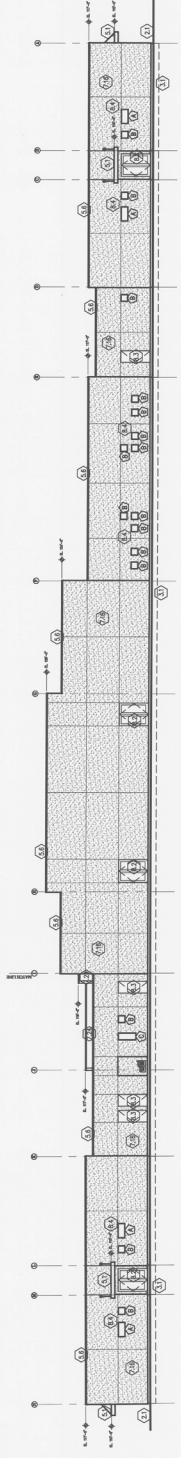
Drawn By: NR
 Job No: 14013
 Date: 4.8.14

L-4
 27 of 113

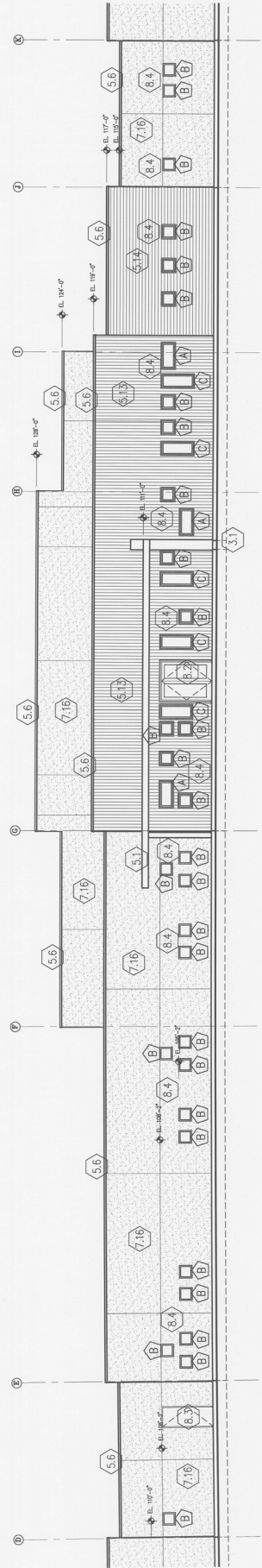
CALL FOR QUOTES AND SCHEDULES
 602-263-1100
 1-800-STAKE-IT
 (OUTSIDE MARICOPA COUNTY)



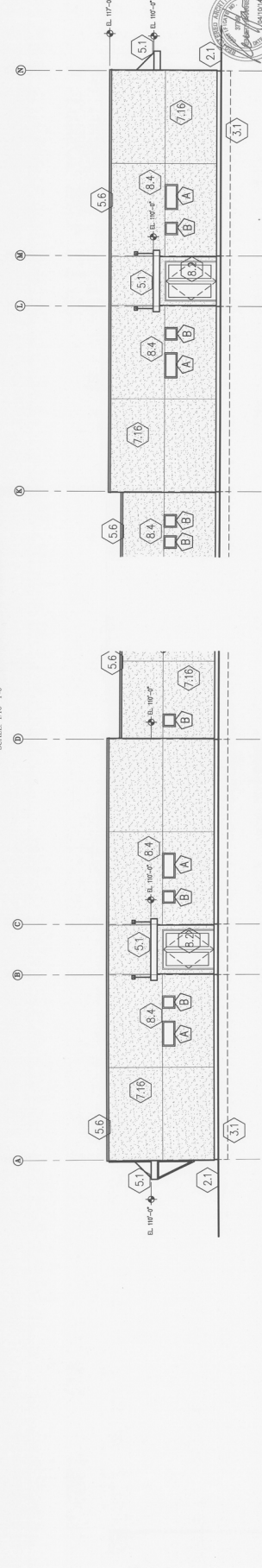
FRONT ELEVATION
 SCALE: 1/16"=1'-0"



REAR ELEVATION
 SCALE: 1/16"=1'-0"



FRONT ELEVATION - SOUTH END
 SCALE: 1/16"=1'-0"



FRONT ELEVATION - NORTH END
 SCALE: 1/16"=1'-0"

KEY TO EXTERIOR FINISHES

STANDARD	COLOR
STUCCO BASE	(TO MATCH APPROVED COLOR BOARD)
STUCCO UPPER	(TO MATCH APPROVED COLOR BOARD)
STUCCO ACCENT	(TO MATCH APPROVED COLOR BOARD)
ROOF	(TO MATCH APPROVED COLOR BOARD)
METAL	(TO MATCH APPROVED COLOR BOARD)
WINDOWS	(TO MATCH APPROVED COLOR BOARD)
BRICK	(TO MATCH APPROVED COLOR BOARD)
BLOCK	(TO MATCH APPROVED COLOR BOARD)
STONE FRONT	(TO MATCH APPROVED COLOR BOARD)
GLASS	(TO MATCH APPROVED COLOR BOARD)
HARDWARE	(TO MATCH APPROVED COLOR BOARD)

NOTE: VERIFY ALL FINISHES WITH OWNER PRIOR TO ORDERING

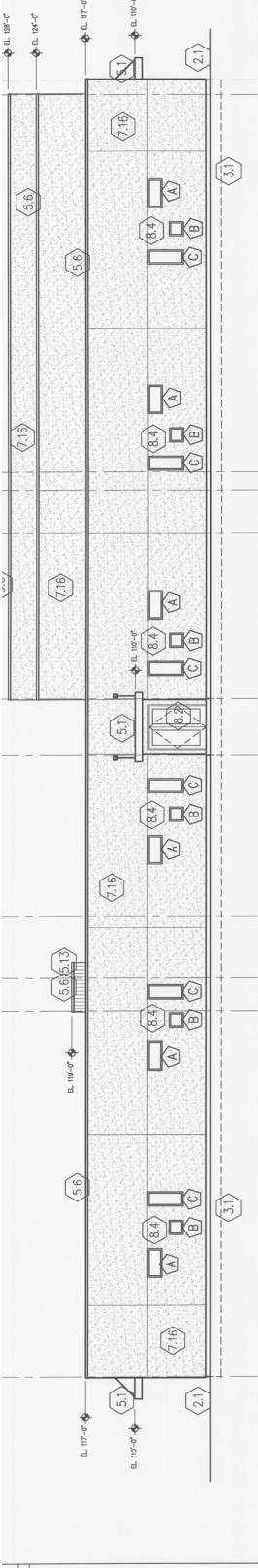
- SEE SHEET A-11 FOR DOOR SCHEDULE AND COMPONENT TYPES
- * - TYPED GLASS

NOTE: CONTRACTOR TO FOLLOW MANUFACTURER'S DETAILS FOR TYPICAL COLORS FOR EXTERIOR WINDOWS AND DOORS

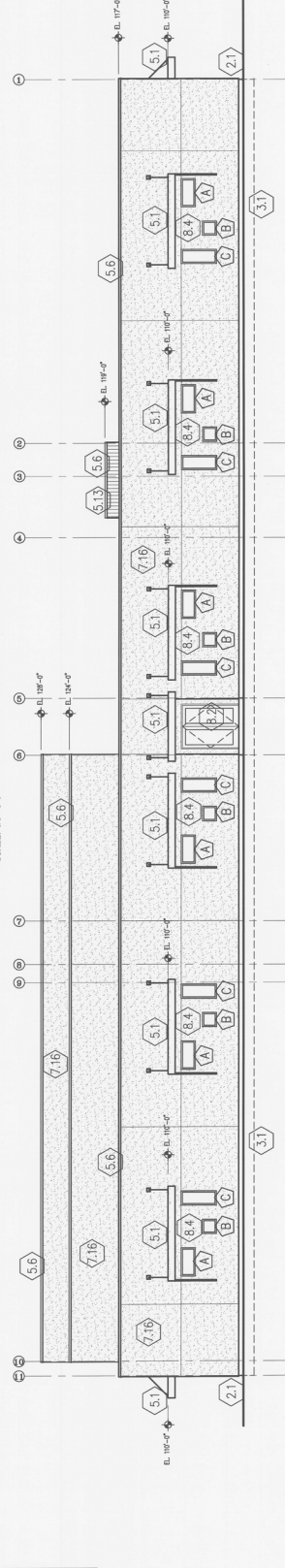
STANDARD	COLOR
STUCCO BASE	(TO MATCH APPROVED COLOR BOARD)
STUCCO UPPER	(TO MATCH APPROVED COLOR BOARD)
STUCCO ACCENT	(TO MATCH APPROVED COLOR BOARD)
ROOF	(TO MATCH APPROVED COLOR BOARD)
METAL	(TO MATCH APPROVED COLOR BOARD)
WINDOWS	(TO MATCH APPROVED COLOR BOARD)
BRICK	(TO MATCH APPROVED COLOR BOARD)
BLOCK	(TO MATCH APPROVED COLOR BOARD)
STONE FRONT	(TO MATCH APPROVED COLOR BOARD)
GLASS	(TO MATCH APPROVED COLOR BOARD)
HARDWARE	(TO MATCH APPROVED COLOR BOARD)

NOTE: VERIFY ALL FINISHES WITH OWNER PRIOR TO ORDERING

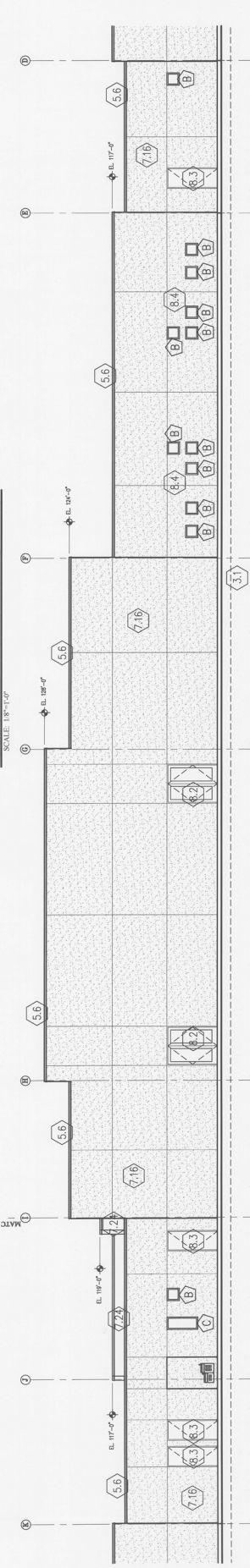
SEE SHEET A-11 FOR DOOR SCHEDULE AND
 WINDOW SCHEDULE
 * - STIPPLED GLASS
 NOTE: CONTRACTOR TO VERIFY MANUFACTURER'S DETAILS
 FOR FINISHING CONDITIONS ON EXTERIOR OPENINGS AND CORNERS



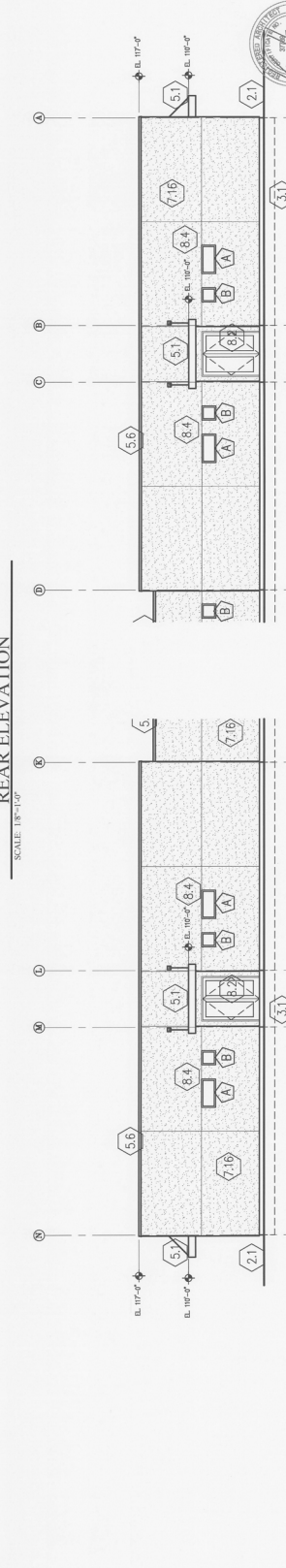
RIGHT SIDE ELEVATION - NORTH
 SCALE: 1/8" = 1'-0"



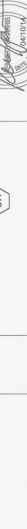
LEFT SIDE ELEVATION - SOUTH
 SCALE: 1/8" = 1'-0"



REAR ELEVATION
 SCALE: 1/8" = 1'-0"



REAR ELEVATION - NORTH END
 SCALE: 1/8" = 1'-0"



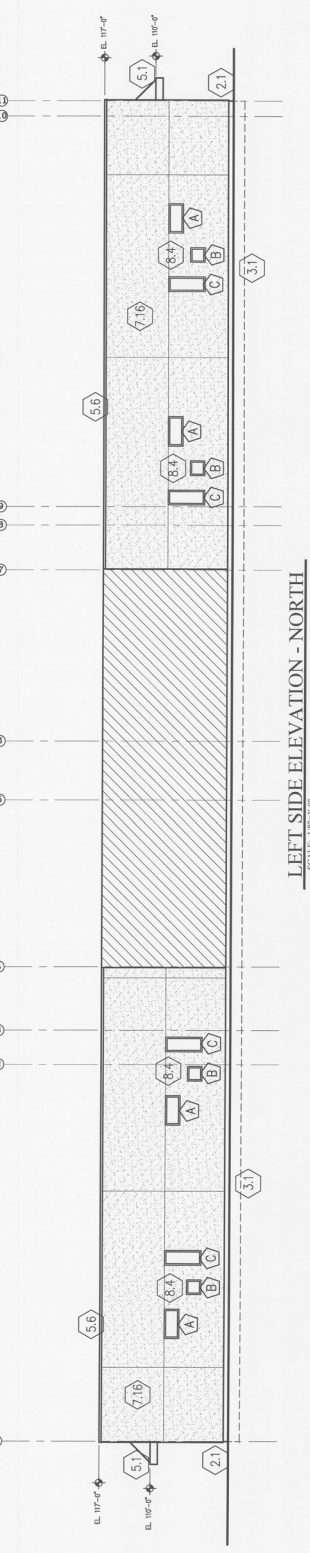
REAR ELEVATION - SOUTH END
 SCALE: 1/8" = 1'-0"

KEN FARRIS ARCHITECT
 2020 NORTH UNIVERSITY AVENUE, SUITE 8020, PHOENIX, AZ 85028
 PHONE: 602-377-4228

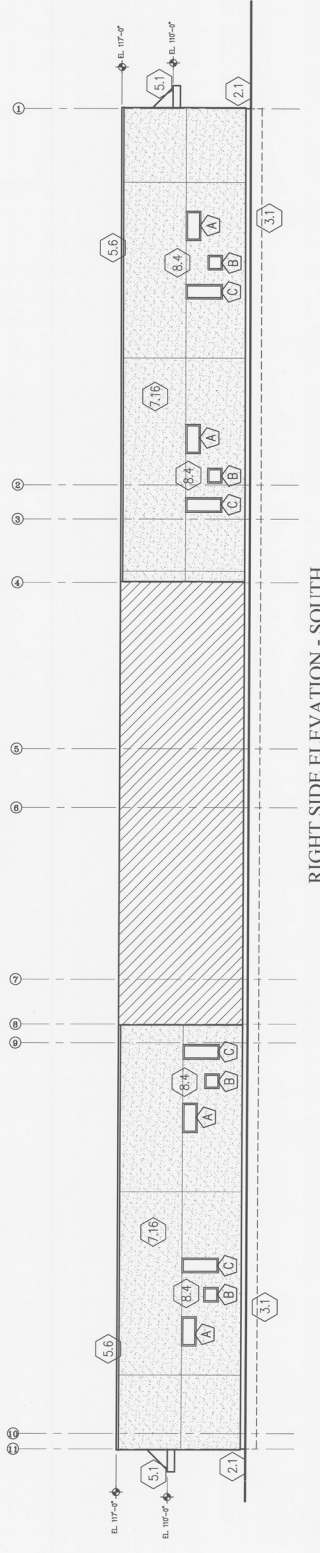
AMERICAN CHARTER DEVELOPMENT
 CITY REVIEW COMMENTS

HILLCREST ACADEMY
 A NEW CHARTER SCHOOL FOR
 MESA, ARIZONA
 3761 SOUTH POWER ROAD
ELEVATIONS

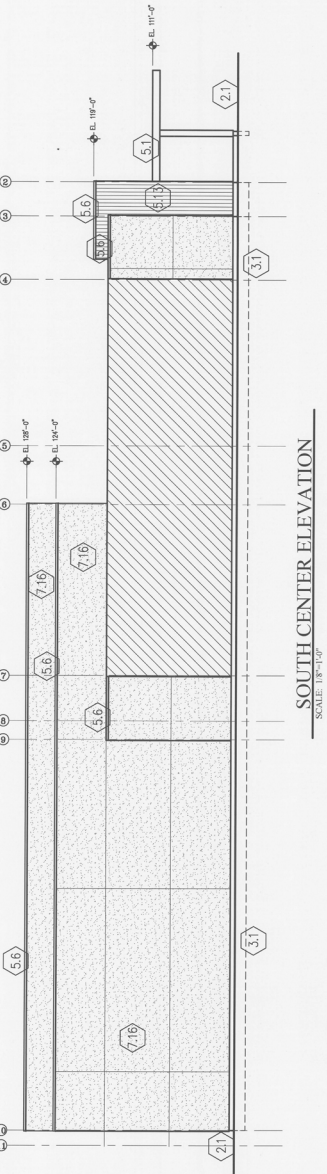
DRAWN: []
 CHECKED: []
 DATE: APRIL 8, 2014
 SCALE: []
 JOB NO.: []
 SHEET: 49 of 113
A2.2



LEFT SIDE ELEVATION - NORTH
 SCALE: 1/8"=1'-0"



RIGHT SIDE ELEVATION - SOUTH
 SCALE: 1/8"=1'-0"



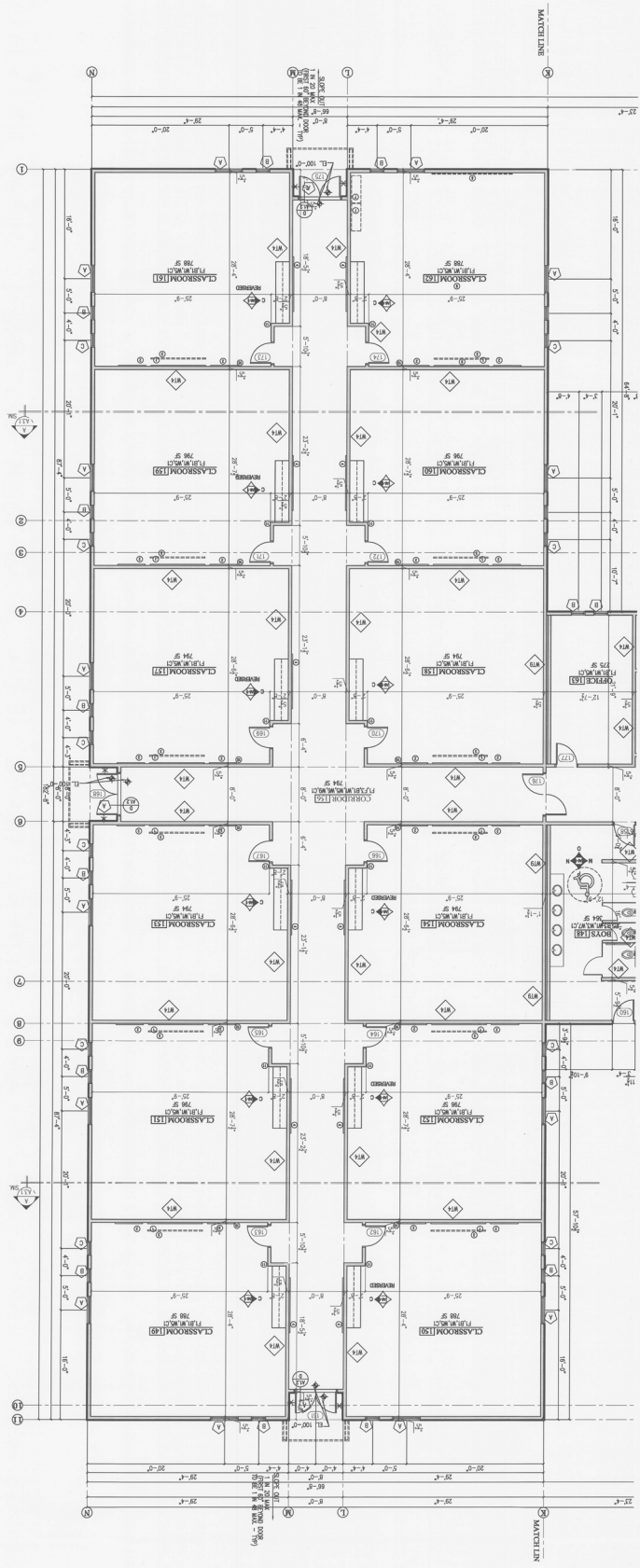
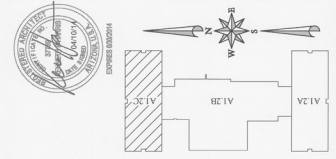
SOUTH CENTER ELEVATION
 SCALE: 1/8"=1'-0"

KEY TO EXTERIOR FINISHES

STANDARD	COLOR
STUCCO BASE	(TO MATCH APPROVED COLOR BOARD)
STUCCO UPPER	(TO MATCH APPROVED COLOR BOARD)
STUCCO ACCENT	(TO MATCH APPROVED COLOR BOARD)
ROOF	(TO MATCH APPROVED COLOR BOARD)
METAL	(TO MATCH APPROVED COLOR BOARD)
WINDORS	(TO MATCH APPROVED COLOR BOARD)
BRICK	(TO MATCH APPROVED COLOR BOARD)
BLOCK	(TO MATCH APPROVED COLOR BOARD)
STONE FRONT	(TO MATCH APPROVED COLOR BOARD)
GLASS	(TO MATCH APPROVED COLOR BOARD)
HARDWARE	(TO MATCH APPROVED COLOR BOARD)

NOTE: VERIFY ALL FINISHES WITH OWNER PRIOR TO ORDERING.
 SEE SHEET A1.1 AND/OR DOOR SCHEDULE AND WINDOW SCHEDULE FOR FINISHES.
 * 1" TYPICAL SLAB
 NOTE: CONTRACTOR TO FOLLOW MANUFACTURER'S DETAILS FOR TYPICAL CONNECTIONS BETWEEN WALLS AND FLOORS.

- GENERAL**
- 1. OVERBUILD AREA
 - 2. FLOOR TRUSSES - SEE STRUCTURAL
 - 3. ORDER TRUSSES
 - 4. 2x4 TRUSS BRACK - BY TRUSS MANUFACTURER
 - 5. 2x4 LUMBER FLOOR - SEE STRUCT. FOR QUANTITY AND SIZE
 - 6. WOOD COLUMN - SEE STRUCT.
 - 7. 1" SQUARE STUCCO COLUMNS - SEE DETAILS ON SHEET A2.2
 - 8. 1" SQUARE STUCCO COLUMNS - SEE DETAILS ON SHEET A2.2
 - 9. WOOD LANSOLINE 1/4" FROM INSIDE - SEE DET. 8/A1.1
 - 10. WOOD BEAM - SEE STRUCT.
 - 11. 10 1/2" x 1 1/4" WOODLUM STRINGERS
 - 12. 3/4" PINE RISER
 - 13. 1 1/2" TREAD
 - 14. 2x4 TRUSS BRACK - BY TRUSS MANUFACTURER
 - 15. 2x4 TRUSS BRACK - BY TRUSS MANUFACTURER
 - 16. 2x4 TRUSS BRACK - BY TRUSS MANUFACTURER
 - 17. ASPHALT EMULSION APPLIED BELOW GRADE (2 COATS) W/ PROTECTION BOARD
 - 18. EPS TIE 10" TALL @ PARAPET & BELT BAND - 6" TALL UNDER ALL SOFFITS
 - 19. AIR BARRIER - EQUAL TO TYVEK STUCCOWRAP (W/PE AND SEAL SEAMS)
 - 20. 2" RIGID INSULATION
 - 21. 3-1/2" SOUND ATTENUATION BATT
 - 22. 4 MIL VULCANIZED MOISTURE BARRIER
 - 23. BATT INSULATION - R11
 - 24. BATT INSULATION - R19
 - 25. BATT INSULATION - R19
 - 26. BATT INSULATION - R19
 - 27. PREFINISHED METAL COPING CAP
 - 28. VERTICAL METAL PANELS
 - 29. HORIZONTAL METAL PANELS
 - 30. STEEL HAND RAILING - 36" A.F.F. - SEE A / A2.2
 - 31. STEEL BEAM - SEE STRUCT.
 - 32. SWIFSON HANGER - SEE STRUCT.
 - 33. H-H METAL ANCHORS - SEE STRUCT.
 - 34. PREFINISHED METAL FLASHING 19 GA.
 - 35. .027 PREFINISHED METAL DRIP, MATCH ROOF COLOR
 - 36. ALUMINUM METAL B. BECK
 - 37. STEEL ROOF JOIST
 - 38. 27 PREFINISHED METAL COPING CAP
 - 39. VERTICAL METAL PANELS
 - 40. HORIZONTAL METAL PANELS
 - 41. STEEL HAND RAILING - 36" A.F.F. - SEE A / A2.2
 - 42. STEEL BEAM - SEE STRUCT.
 - 43. SWIFSON HANGER - SEE STRUCT.
 - 44. H-H METAL ANCHORS - SEE STRUCT.
 - 45. PREFINISHED METAL FLASHING 19 GA.
 - 46. .027 PREFINISHED METAL DRIP, MATCH ROOF COLOR
 - 47. ALUMINUM METAL B. BECK
 - 48. STEEL ROOF JOIST
 - 49. 27 PREFINISHED METAL COPING CAP
 - 50. VERTICAL METAL PANELS
 - 51. HORIZONTAL METAL PANELS
 - 52. STEEL HAND RAILING - 36" A.F.F. - SEE A / A2.2
 - 53. STEEL BEAM - SEE STRUCT.
 - 54. SWIFSON HANGER - SEE STRUCT.
 - 55. H-H METAL ANCHORS - SEE STRUCT.
 - 56. PREFINISHED METAL FLASHING 19 GA.
 - 57. .027 PREFINISHED METAL DRIP, MATCH ROOF COLOR
 - 58. ALUMINUM METAL B. BECK
 - 59. STEEL ROOF JOIST
 - 60. 27 PREFINISHED METAL COPING CAP
 - 61. VERTICAL METAL PANELS
 - 62. HORIZONTAL METAL PANELS
 - 63. STEEL HAND RAILING - 36" A.F.F. - SEE A / A2.2
 - 64. STEEL BEAM - SEE STRUCT.
 - 65. SWIFSON HANGER - SEE STRUCT.
 - 66. H-H METAL ANCHORS - SEE STRUCT.
 - 67. PREFINISHED METAL FLASHING 19 GA.
 - 68. .027 PREFINISHED METAL DRIP, MATCH ROOF COLOR
 - 69. ALUMINUM METAL B. BECK
 - 70. STEEL ROOF JOIST
 - 71. 27 PREFINISHED METAL COPING CAP
 - 72. VERTICAL METAL PANELS
 - 73. HORIZONTAL METAL PANELS
 - 74. STEEL HAND RAILING - 36" A.F.F. - SEE A / A2.2
 - 75. STEEL BEAM - SEE STRUCT.
 - 76. SWIFSON HANGER - SEE STRUCT.
 - 77. H-H METAL ANCHORS - SEE STRUCT.
 - 78. PREFINISHED METAL FLASHING 19 GA.
 - 79. .027 PREFINISHED METAL DRIP, MATCH ROOF COLOR
 - 80. ALUMINUM METAL B. BECK
 - 81. STEEL ROOF JOIST
 - 82. 27 PREFINISHED METAL COPING CAP
 - 83. VERTICAL METAL PANELS
 - 84. HORIZONTAL METAL PANELS
 - 85. STEEL HAND RAILING - 36" A.F.F. - SEE A / A2.2
 - 86. STEEL BEAM - SEE STRUCT.
 - 87. SWIFSON HANGER - SEE STRUCT.
 - 88. H-H METAL ANCHORS - SEE STRUCT.
 - 89. PREFINISHED METAL FLASHING 19 GA.
 - 90. .027 PREFINISHED METAL DRIP, MATCH ROOF COLOR
 - 91. ALUMINUM METAL B. BECK
 - 92. STEEL ROOF JOIST
 - 93. 27 PREFINISHED METAL COPING CAP
 - 94. VERTICAL METAL PANELS
 - 95. HORIZONTAL METAL PANELS
 - 96. STEEL HAND RAILING - 36" A.F.F. - SEE A / A2.2
 - 97. STEEL BEAM - SEE STRUCT.
 - 98. SWIFSON HANGER - SEE STRUCT.
 - 99. H-H METAL ANCHORS - SEE STRUCT.
 - 100. PREFINISHED METAL FLASHING 19 GA.
 - 101. .027 PREFINISHED METAL DRIP, MATCH ROOF COLOR
 - 102. ALUMINUM METAL B. BECK
 - 103. STEEL ROOF JOIST
 - 104. 27 PREFINISHED METAL COPING CAP
 - 105. VERTICAL METAL PANELS
 - 106. HORIZONTAL METAL PANELS
 - 107. STEEL HAND RAILING - 36" A.F.F. - SEE A / A2.2
 - 108. STEEL BEAM - SEE STRUCT.
 - 109. SWIFSON HANGER - SEE STRUCT.
 - 110. H-H METAL ANCHORS - SEE STRUCT.
 - 111. PREFINISHED METAL FLASHING 19 GA.
 - 112. .027 PREFINISHED METAL DRIP, MATCH ROOF COLOR
 - 113. ALUMINUM METAL B. BECK
 - 114. STEEL ROOF JOIST
 - 115. 27 PREFINISHED METAL COPING CAP
 - 116. VERTICAL METAL PANELS
 - 117. HORIZONTAL METAL PANELS
 - 118. STEEL HAND RAILING - 36" A.F.F. - SEE A / A2.2
 - 119. STEEL BEAM - SEE STRUCT.
 - 120. SWIFSON HANGER - SEE STRUCT.
 - 121. H-H METAL ANCHORS - SEE STRUCT.
 - 122. PREFINISHED METAL FLASHING 19 GA.
 - 123. .027 PREFINISHED METAL DRIP, MATCH ROOF COLOR
 - 124. ALUMINUM METAL B. BECK
 - 125. STEEL ROOF JOIST
 - 126. 27 PREFINISHED METAL COPING CAP
 - 127. VERTICAL METAL PANELS
 - 128. HORIZONTAL METAL PANELS
 - 129. STEEL HAND RAILING - 36" A.F.F. - SEE A / A2.2
 - 130. STEEL BEAM - SEE STRUCT.
 - 131. SWIFSON HANGER - SEE STRUCT.
 - 132. H-H METAL ANCHORS - SEE STRUCT.
 - 133. PREFINISHED METAL FLASHING 19 GA.
 - 134. .027 PREFINISHED METAL DRIP, MATCH ROOF COLOR
 - 135. ALUMINUM METAL B. BECK
 - 136. STEEL ROOF JOIST
 - 137. 27 PREFINISHED METAL COPING CAP
 - 138. VERTICAL METAL PANELS
 - 139. HORIZONTAL METAL PANELS
 - 140. STEEL HAND RAILING - 36" A.F.F. - SEE A / A2.2
 - 141. STEEL BEAM - SEE STRUCT.
 - 142. SWIFSON HANGER - SEE STRUCT.
 - 143. H-H METAL ANCHORS - SEE STRUCT.
 - 144. PREFINISHED METAL FLASHING 19 GA.
 - 145. .027 PREFINISHED METAL DRIP, MATCH ROOF COLOR
 - 146. ALUMINUM METAL B. BECK
 - 147. STEEL ROOF JOIST
 - 148. 27 PREFINISHED METAL COPING CAP
 - 149. VERTICAL METAL PANELS
 - 150. HORIZONTAL METAL PANELS
 - 151. STEEL HAND RAILING - 36" A.F.F. - SEE A / A2.2
 - 152. STEEL BEAM - SEE STRUCT.
 - 153. SWIFSON HANGER - SEE STRUCT.
 - 154. H-H METAL ANCHORS - SEE STRUCT.
 - 155. PREFINISHED METAL FLASHING 19 GA.
 - 156. .027 PREFINISHED METAL DRIP, MATCH ROOF COLOR
 - 157. ALUMINUM METAL B. BECK
 - 158. STEEL ROOF JOIST
 - 159. 27 PREFINISHED METAL COPING CAP
 - 160. VERTICAL METAL PANELS
 - 161. HORIZONTAL METAL PANELS
 - 162. STEEL HAND RAILING - 36" A.F.F. - SEE A / A2.2
 - 163. STEEL BEAM - SEE STRUCT.
 - 164. SWIFSON HANGER - SEE STRUCT.
 - 165. H-H METAL ANCHORS - SEE STRUCT.
 - 166. PREFINISHED METAL FLASHING 19 GA.
 - 167. .027 PREFINISHED METAL DRIP, MATCH ROOF COLOR
 - 168. ALUMINUM METAL B. BECK
 - 169. STEEL ROOF JOIST
 - 170. 27 PREFINISHED METAL COPING CAP
 - 171. VERTICAL METAL PANELS
 - 172. HORIZONTAL METAL PANELS
 - 173. STEEL HAND RAILING - 36" A.F.F. - SEE A / A2.2
 - 174. STEEL BEAM - SEE STRUCT.
 - 175. SWIFSON HANGER - SEE STRUCT.
 - 176. H-H METAL ANCHORS - SEE STRUCT.
 - 177. PREFINISHED METAL FLASHING 19 GA.
 - 178. .027 PREFINISHED METAL DRIP, MATCH ROOF COLOR
 - 179. ALUMINUM METAL B. BECK
 - 180. STEEL ROOF JOIST
 - 181. 27 PREFINISHED METAL COPING CAP
 - 182. VERTICAL METAL PANELS
 - 183. HORIZONTAL METAL PANELS
 - 184. STEEL HAND RAILING - 36" A.F.F. - SEE A / A2.2
 - 185. STEEL BEAM - SEE STRUCT.
 - 186. SWIFSON HANGER - SEE STRUCT.
 - 187. H-H METAL ANCHORS - SEE STRUCT.
 - 188. PREFINISHED METAL FLASHING 19 GA.
 - 189. .027 PREFINISHED METAL DRIP, MATCH ROOF COLOR
 - 190. ALUMINUM METAL B. BECK
 - 191. STEEL ROOF JOIST
 - 192. 27 PREFINISHED METAL COPING CAP
 - 193. VERTICAL METAL PANELS
 - 194. HORIZONTAL METAL PANELS
 - 195. STEEL HAND RAILING - 36" A.F.F. - SEE A / A2.2
 - 196. STEEL BEAM - SEE STRUCT.
 - 197. SWIFSON HANGER - SEE STRUCT.
 - 198. H-H METAL ANCHORS - SEE STRUCT.
 - 199. PREFINISHED METAL FLASHING 19 GA.
 - 200. .027 PREFINISHED METAL DRIP, MATCH ROOF COLOR
 - 201. ALUMINUM METAL B. BECK
 - 202. STEEL ROOF JOIST
 - 203. 27 PREFINISHED METAL COPING CAP
 - 204. VERTICAL METAL PANELS
 - 205. HORIZONTAL METAL PANELS
 - 206. STEEL HAND RAILING - 36" A.F.F. - SEE A / A2.2
 - 207. STEEL BEAM - SEE STRUCT.
 - 208. SWIFSON HANGER - SEE STRUCT.
 - 209. H-H METAL ANCHORS - SEE STRUCT.
 - 210. PREFINISHED METAL FLASHING 19 GA.
 - 211. .027 PREFINISHED METAL DRIP, MATCH ROOF COLOR
 - 212. ALUMINUM METAL B. BECK
 - 213. STEEL ROOF JOIST
 - 214. 27 PREFINISHED METAL COPING CAP
 - 215. VERTICAL METAL PANELS
 - 216. HORIZONTAL METAL PANELS
 - 217. STEEL HAND RAILING - 36" A.F.F. - SEE A / A2.2
 - 218. STEEL BEAM - SEE STRUCT.
 - 219. SWIFSON HANGER - SEE STRUCT.
 - 220. H-H METAL ANCHORS - SEE STRUCT.
 - 221. PREFINISHED METAL FLASHING 19 GA.
 - 222. .027 PREFINISHED METAL DRIP, MATCH ROOF COLOR
 - 223. ALUMINUM METAL B. BECK
 - 224. STEEL ROOF JOIST
 - 225. 27 PREFINISHED METAL COPING CAP
 - 226. VERTICAL METAL PANELS
 - 227. HORIZONTAL METAL PANELS
 - 228. STEEL HAND RAILING - 36" A.F.F. - SEE A / A2.2
 - 229. STEEL BEAM - SEE STRUCT.
 - 230. SWIFSON HANGER - SEE STRUCT.
 - 231. H-H METAL ANCHORS - SEE STRUCT.
 - 232. PREFINISHED METAL FLASHING 19 GA.
 - 233. .027 PREFINISHED METAL DRIP, MATCH ROOF COLOR
 - 234. ALUMINUM METAL B. BECK
 - 235. STEEL ROOF JOIST
 - 236. 27 PREFINISHED METAL COPING CAP
 - 237. VERTICAL METAL PANELS
 - 238. HORIZONTAL METAL PANELS
 - 239. STEEL HAND RAILING - 36" A.F.F. - SEE A / A2.2
 - 240. STEEL BEAM - SEE STRUCT.
 - 241. SWIFSON HANGER - SEE STRUCT.
 - 242. H-H METAL ANCHORS - SEE STRUCT.
 - 243. PREFINISHED METAL FLASHING 19 GA.
 - 244. .027 PREFINISHED METAL DRIP, MATCH ROOF COLOR
 - 245. ALUMINUM METAL B. BECK
 - 246. STEEL ROOF JOIST
 - 247. 27 PREFINISHED METAL COPING CAP
 - 248. VERTICAL METAL PANELS
 - 249. HORIZONTAL METAL PANELS
 - 250. STEEL HAND RAILING - 36" A.F.F. - SEE A / A2.2
 - 251. STEEL BEAM - SEE STRUCT.
 - 252. SWIFSON HANGER - SEE STRUCT.
 - 253. H-H METAL ANCHORS - SEE STRUCT.
 - 254. PREFINISHED METAL FLASHING 19 GA.
 - 255. .027 PREFINISHED METAL DRIP, MATCH ROOF COLOR
 - 256. ALUMINUM METAL B. BECK
 - 257. STEEL ROOF JOIST
 - 258. 27 PREFINISHED METAL COPING CAP
 - 259. VERTICAL METAL PANELS
 - 260. HORIZONTAL METAL PANELS
 - 261. STEEL HAND RAILING - 36" A.F.F. - SEE A / A2.2
 - 262. STEEL BEAM - SEE STRUCT.
 - 263. SWIFSON HANGER - SEE STRUCT.
 - 264. H-H METAL ANCHORS - SEE STRUCT.
 - 265. PREFINISHED METAL FLASHING 19 GA.
 - 266. .027 PREFINISHED METAL DRIP, MATCH ROOF COLOR
 - 267. ALUMINUM METAL B. BECK
 - 268. STEEL ROOF JOIST
 - 269. 27 PREFINISHED METAL COPING CAP
 - 270. VERTICAL METAL PANELS
 - 271. HORIZONTAL METAL PANELS
 - 272. STEEL HAND RAILING - 36" A.F.F. - SEE A / A2.2
 - 273. STEEL BEAM - SEE STRUCT.
 - 274. SWIFSON HANGER - SEE STRUCT.
 - 275. H-H METAL ANCHORS - SEE STRUCT.
 - 276. PREFINISHED METAL FLASHING 19 GA.
 - 277. .027 PREFINISHED METAL DRIP, MATCH ROOF COLOR
 - 278. ALUMINUM METAL B. BECK
 - 279. STEEL ROOF JOIST
 - 280. 27 PREFINISHED METAL COPING CAP
 - 281. VERTICAL METAL PANELS
 - 282. HORIZONTAL METAL PANELS
 - 283. STEEL HAND RAILING - 36" A.F.F. - SEE A / A2.2
 - 284. STEEL BEAM - SEE STRUCT.
 - 285. SWIFSON HANGER - SEE STRUCT.
 - 286. H-H METAL ANCHORS - SEE STRUCT.
 - 287. PREFINISHED METAL FLASHING 19 GA.
 - 288. .027 PREFINISHED METAL DRIP, MATCH ROOF COLOR
 - 289. ALUMINUM METAL B. BECK
 - 290. STEEL ROOF JOIST
 - 291. 27 PREFINISHED METAL COPING CAP
 - 292. VERTICAL METAL PANELS
 - 293. HORIZONTAL METAL PANELS
 - 294. STEEL HAND RAILING - 36" A.F.F. - SEE A / A2.2
 - 295. STEEL BEAM - SEE STRUCT.
 - 296. SWIFSON HANGER - SEE STRUCT.
 - 297. H-H METAL ANCHORS - SEE STRUCT.
 - 298. PREFINISHED METAL FLASHING 19 GA.
 - 299. .027 PREFINISHED METAL DRIP, MATCH ROOF COLOR
 - 300. ALUMINUM METAL B. BECK
 - 301. STEEL ROOF JOIST
 - 302. 27 PREFINISHED METAL COPING CAP
 - 303. VERTICAL METAL PANELS
 - 304. HORIZONTAL METAL PANELS
 - 305. STEEL HAND RAILING - 36" A.F.F. - SEE A / A2.2
 - 306. STEEL BEAM - SEE STRUCT.
 - 307. SWIFSON HANGER - SEE STRUCT.
 - 308. H-H METAL ANCHORS - SEE STRUCT.
 - 309. PREFINISHED METAL FLASHING 19 GA.
 - 310. .027 PREFINISHED METAL DRIP, MATCH ROOF COLOR
 - 311. ALUMINUM METAL B. BECK
 - 312. STEEL ROOF JOIST
 - 313. 27 PREFINISHED METAL COPING CAP
 - 314. VERTICAL METAL PANELS
 - 315. HORIZONTAL METAL PANELS
 - 316. STEEL HAND RAILING - 36" A.F.F. - SEE A / A2.2
 - 317. STEEL BEAM - SEE STRUCT.
 - 318. SWIFSON HANGER - SEE STRUCT.
 - 319. H-H METAL ANCHORS - SEE STRUCT.
 - 320. PREFINISHED METAL FLASHING 19 GA.
 - 321. .027 PREFINISHED METAL DRIP, MATCH ROOF COLOR
 - 322. ALUMINUM METAL B. BECK
 - 323. STEEL ROOF JOIST
 - 324. 27 PREFINISHED METAL COPING CAP
 - 325. VERTICAL METAL PANELS
 - 326. HORIZONTAL METAL PANELS
 - 327. STEEL HAND RAILING - 36" A.F.F. - SEE A / A2.2
 - 328. STEEL BEAM - SEE STRUCT.
 - 329. SWIFSON HANGER - SEE STRUCT.
 - 330. H-H METAL ANCHORS - SEE STRUCT.
 - 331. PREFINISHED METAL FLASHING 19 GA.
 - 332. .027 PREFINISHED METAL DRIP, MATCH ROOF COLOR
 - 333. ALUMINUM METAL B. BECK
 - 334. STEEL ROOF JOIST
 - 335. 27 PREFINISHED METAL COPING CAP
 - 336. VERTICAL METAL PANELS
 - 337. HORIZONTAL METAL PANELS
 - 338. STEEL HAND RAILING - 36" A.F.F. - SEE A / A2.2
 - 339. STEEL BEAM - SEE STRUCT.
 - 340. SWIFSON HANGER - SEE STRUCT.
 - 341. H-H METAL ANCHORS - SEE STRUCT.
 - 342. PREFINISHED METAL FLASHING 19 GA.
 - 343. .027 PREFINISHED METAL DRIP, MATCH ROOF COLOR
 - 344. ALUMINUM METAL B. BECK
 - 345. STEEL ROOF JOIST
 - 346. 27 PREFINISHED METAL COPING CAP
 - 347. VERTICAL METAL PANELS
 - 348. HORIZONTAL METAL PANELS
 - 349. STEEL HAND RAILING - 36" A.F.F. - SEE A / A2.2
 - 350. STEEL BEAM - SEE STRUCT.
 - 351. SWIFSON HANGER - SEE STRUCT.
 - 352. H-H METAL ANCHORS - SEE STRUCT.
 - 353. PREFINISHED METAL FLASHING 19 GA.
 - 354. .027 PREFINISHED METAL DRIP, MATCH ROOF COLOR
 - 355. ALUMINUM METAL B. BECK
 - 356. STEEL ROOF JOIST
 - 357. 27 PREFINISHED METAL COPING CAP
 - 358. VERTICAL METAL PANELS
 - 359. HORIZONTAL METAL PANELS
 - 360. STEEL HAND RAILING - 36" A.F.F. - SEE A / A2.2
 - 361. STEEL BEAM - SEE STRUCT.
 - 362. SWIFSON HANGER - SEE STRUCT.
 - 363. H-H METAL ANCHORS - SEE STRUCT.
 - 364. PREFINISHED METAL FLASHING 19 GA.
 - 365. .027 PREFINISHED METAL DRIP, MATCH ROOF COLOR
 - 366. ALUMINUM METAL B. BECK
 - 367. STEEL ROOF JOIST
 - 368. 27 PREFINISHED METAL COPING CAP
 - 369. VERTICAL METAL PANELS
 - 370. HORIZONTAL METAL PANELS
 - 371. STEEL HAND RAILING - 36" A.F.F. - SEE A / A2.2
 - 372. STEEL BEAM - SEE STRUCT.
 - 373. SWIFSON HANGER - SEE STRUCT.
 - 374. H-H METAL ANCHORS - SEE STRUCT.
 - 375. PREFINISHED METAL FLASHING 19 GA.
 - 376. .027 PREFINISHED METAL DRIP, MATCH ROOF COLOR
 - 377. ALUMINUM METAL B. BECK
 - 378. STEEL ROOF JOIST
 - 379. 27 PREFINISHED METAL COPING CAP
 - 380. VERTICAL METAL PANELS
 - 381. HORIZONTAL METAL PANELS
 - 382. STEEL HAND RAILING - 36" A.F.F. - SEE A / A2.2
 - 383. STEEL BEAM - SEE STRUCT.
 - 384. SWIFSON HANGER - SEE STRUCT.
 - 385. H-H METAL ANCHORS - SEE STRUCT.
 - 386. PREFINISHED METAL FLASHING 19 GA.
 - 387. .027 PREFINISHED METAL DRIP, MATCH ROOF COLOR
 - 388. ALUMINUM METAL B. BECK
 - 389. STEEL ROOF JOIST
 - 390. 27 PREFINISHED METAL COPING CAP
 - 391. VERTICAL METAL PANELS
 - 392. HORIZONTAL METAL PANELS
 - 393. STEEL HAND RAILING - 36" A.F.F. - SEE A / A2.2
 - 394. STEEL BEAM - SEE STRUCT.
 - 395. SWIFSON HANGER - SEE STRUCT.
 - 396. H-H METAL ANCHORS - SEE STRUCT.
 - 397. PREFINISHED METAL FLASHING 19 GA.
 - 398. .027 PREFINISHED METAL DRIP, MATCH ROOF COLOR
 - 399. ALUMINUM METAL B. BECK
 - 400. STEEL ROOF JOIST
 - 401. 27 PREFINISHED METAL COPING CAP
 - 402. VERTICAL METAL PANELS
 - 403. HORIZONTAL METAL PANELS
 - 404. STEEL HAND RAILING - 36" A.F.F. - SEE A / A2.2
 - 405. STEEL BEAM - SEE STRUCT.
 - 406. SWIFSON HANGER - SEE STRUCT.
 - 407. H-H METAL ANCHORS - SEE STRUCT.
 - 408. PREFINISHED METAL FLASHING 19 GA.
 - 409. .027 PREFINISHED METAL DRIP, MATCH ROOF COLOR
 - 410. ALUMINUM METAL B. BECK
 - 411. STEEL ROOF JOIST
 - 412. 27 PREFINISHED METAL COPING CAP
 - 413. VERTICAL METAL PANELS
 - 414. HORIZONTAL METAL PANELS
 - 415. STEEL HAND RAILING - 36" A.F.F. - SEE A / A2.2
 - 416. STEEL BEAM - SEE STRUCT.
 - 417. SWIFSON HANGER - SEE STRUCT.
 - 418. H-H METAL ANCHORS - SEE STRUCT.
 - 419. PREFINISHED METAL FLASHING 19 GA.
 - 420. .027 PREFINISHED METAL DRIP, MATCH ROOF COLOR
 - 421. ALUMINUM METAL B. BECK
 - 422. STEEL ROOF JOIST
 - 423. 27 PREFINISHED METAL COPING CAP
 - 424. VERTICAL METAL PANELS
 - 425. HORIZONTAL METAL PANELS
 - 426. STEEL HAND RAILING - 36" A.F.F. - SEE A / A2.2
 - 427. STEEL BEAM - SEE STRUCT.
 - 428. SWIFSON HANGER - SEE STRUCT.
 - 429. H-H METAL ANCHORS - SEE STRUCT.
 - 430. PREFINISHED METAL FLASHING 19 GA.
 - 431. .027 PREFINISHED METAL DRIP, MATCH ROOF COLOR
 - 432. ALUMINUM METAL B. BECK
 - 433. STEEL ROOF JOIST
 - 434. 27 PREFINISHED METAL COPING CAP
 - 435. VERTICAL METAL PANELS
 - 436. HORIZONTAL METAL PANELS
 - 437. STEEL HAND RAILING - 36" A.F.F. - SEE A / A2.2
 - 438. STEEL BEAM - SEE STRUCT.
 - 439. SWIFSON HANGER - SEE STRUCT.
 - 440. H-H METAL ANCHORS - SEE STRUCT.
 - 441. PREFINISHED METAL FLASHING 19 GA.
 - 442. .027 PREFINISHED METAL DRIP, MATCH ROOF COLOR
 - 443. ALUMINUM METAL B. BECK
 - 444. STEEL ROOF JOIST
 - 445. 27 PREFINISHED METAL COPING CAP
 - 446. VERTICAL METAL PANELS
 - 447. HORIZONTAL METAL PANELS
 - 448. STEEL HAND RAILING - 36" A.F.F. - SEE A / A2.2
 - 449. STEEL BEAM - SEE STRUCT.
 - 450. SWIFSON HANGER - SEE STRUCT.
 - 451. H-H METAL ANCHORS - SEE STRUCT.
 - 452. PREFINISHED METAL FLASHING 19 GA.
 - 453. .027 PREFINISHED METAL DRIP, MATCH ROOF COLOR
 - 454. ALUMINUM METAL B. BECK
 - 455. STEEL ROOF JOIST
 - 456. 27 PREFINISHED METAL COPING CAP
 - 457. VERTICAL METAL PANELS
 - 458. HORIZONTAL METAL PANELS
 - 459. STEEL HAND RAILING - 36" A.F.F. - SEE A / A2.2
 - 460. STEEL BEAM - SEE STRUCT.
 - 461. SWIFSON HANGER - SEE STRUCT.
 - 462. H-H METAL ANCHORS - SEE STRUCT.
 - 463. PREFINISHED METAL FLASHING 19 GA.
 - 464. .027 PREFINISHED METAL DRIP, MATCH ROOF COLOR
 - 465. ALUMINUM METAL B. BECK
 - 466. STEEL ROOF JOIST
 - 467. 27 PREFINISHED METAL COPING CAP
 - 468. VERTICAL METAL PANELS
 - 469. HORIZONTAL METAL PANELS
 - 470. STEEL HAND RAILING - 36" A.F.F. - SEE A / A2.2
 - 471. STEEL BEAM - SEE STRUCT.
 - 472. SWIFSON HANGER - SEE STRUCT.
 - 473. H-H METAL ANCHORS - SEE STRUCT.
 - 474. PREFINISHED METAL FLASHING 19 GA.
 - 475. .027 PREFINISHED METAL DRIP, MATCH ROOF COLOR
 - 476. ALUMINUM METAL B. BECK
 - 477. STEEL ROOF JOIST
 - 478. 27 PREFINISHED METAL COPING CAP
 - 479. VERTICAL METAL PANELS
 - 480. HORIZONTAL METAL PANELS
 - 481. STEEL HAND RAILING - 36" A.F.F. - SEE A / A2.2
 - 482. STEEL BEAM - SEE STRUCT.
 - 483. SWIFSON HANGER - SEE STRUCT.
 - 484. H-H METAL ANCHORS - SEE STRUCT.
 - 485. PREFINISHED METAL FLASHING 19 GA.
 - 486. .027 PREFINISHED METAL DRIP, MATCH ROOF COLOR
 - 487. ALUMINUM METAL B. BECK
 - 488. STEEL ROOF JOIST
 - 489. 27 PREFINISHED METAL COPING CAP
 - 490. VERTICAL METAL PANELS
 - 491. HORIZONTAL METAL PANELS
 - 492. STEEL HAND RAILING - 36" A.F.F. - SEE A / A2.2
 - 493. STEEL BEAM - SEE STRUCT.
 - 494. SWIFSON HANGER - SEE STRUCT.
 - 495. H-H METAL ANCHORS - SEE STRUCT.
 - 496. PREFINISHED METAL FLASHING 19 GA.
 - 497. .027 PREFINISHED METAL DRIP, MATCH ROOF COLOR
 - 498. ALUMINUM METAL B. BECK
 - 499. STEEL ROOF JOIST
 - 500. 27 PREFINISHED METAL COPING CAP
 - 501. VERTICAL METAL PANELS
 - 502. HORIZONTAL METAL PANELS
 - 503. STEEL HAND RAILING - 36" A.F.F. - SEE A / A2.2
 - 504. STEEL BEAM - SEE STRUCT.
 - 505. SWIFSON HANGER - SEE STRUCT.
 - 506. H-H METAL ANCHORS - SEE STRUCT.
 - 507. PREFINISHED METAL FLASHING 19 GA.
 - 508. .027 PREFINISHED METAL DRIP, MATCH ROOF COLOR
 - 509. ALUMINUM METAL B. BECK
 - 510. STEEL ROOF JOIST
 - 511. 27 PREFINISHED METAL COPING CAP
 - 512. VERTICAL METAL PANELS
 - 513. HORIZONTAL METAL PANELS
 - 514. STEEL HAND RAILING - 36" A.F.F. - SEE A / A2.2
 - 515. STEEL BEAM - SEE STRUCT.
 - 516. SWIFSON HANGER - SEE STRUCT.
 - 517. H-H METAL ANCHORS - SEE STRUCT.
 - 518. PREFINISHED METAL FLASHING 19 GA.
 - 519. .027 PREFINISHED METAL DRIP, MATCH ROOF COLOR
 - 520. ALUMINUM METAL B. BECK
 - 521. STEEL ROOF JOIST
 - 522. 27 PREFINISHED METAL COPING CAP
 - 523. VERTICAL METAL PANELS
 - 524. HORIZONTAL METAL PANELS
 - 525. STEEL HAND RAILING - 36" A.F.F. - SEE A / A2.2
 - 526. STEEL BEAM - SEE STRUCT.
 - 527. SWIFSON HANGER - SEE STRUCT.
 - 528. H-H METAL ANCHORS - SEE STRUCT.
 - 529. PREFINISHED METAL FLASHING 19 GA.
 - 530. .027 PREFINISHED METAL DRIP, MATCH ROOF COLOR
 - 531. ALUMINUM METAL B. BECK
 -



FIRST LEVEL FLOOR PLAN NORTH END
 SCALE: 1/8" = 1'-0"

REF: SEE TABLE 1.001 FOR FINISH SCHEDULE

EQUIP. SCHEDULE

1	4" x 4" WIRE BOND (BULK)
2	4" x 4" WIRE BOND (BULK)
3	PULL DOWN SEEDS - BY OWNER
4	6" x 6" CONCRETE (4" TYP.)
5	6" x 6" CONCRETE (4" TYP.)
6	6" x 6" CONCRETE (4" TYP.)
7	6" x 6" CONCRETE (4" TYP.)
8	6" x 6" CONCRETE (4" TYP.)
9	6" x 6" CONCRETE (4" TYP.)
10	6" x 6" CONCRETE (4" TYP.)
11	6" x 6" CONCRETE (4" TYP.)
12	6" x 6" CONCRETE (4" TYP.)
13	6" x 6" CONCRETE (4" TYP.)
14	6" x 6" CONCRETE (4" TYP.)
15	6" x 6" CONCRETE (4" TYP.)
16	6" x 6" CONCRETE (4" TYP.)
17	6" x 6" CONCRETE (4" TYP.)
18	6" x 6" CONCRETE (4" TYP.)
19	6" x 6" CONCRETE (4" TYP.)
20	6" x 6" CONCRETE (4" TYP.)
21	6" x 6" CONCRETE (4" TYP.)
22	6" x 6" CONCRETE (4" TYP.)
23	6" x 6" CONCRETE (4" TYP.)
24	6" x 6" CONCRETE (4" TYP.)
25	6" x 6" CONCRETE (4" TYP.)
26	6" x 6" CONCRETE (4" TYP.)
27	6" x 6" CONCRETE (4" TYP.)
28	6" x 6" CONCRETE (4" TYP.)
29	6" x 6" CONCRETE (4" TYP.)
30	6" x 6" CONCRETE (4" TYP.)
31	6" x 6" CONCRETE (4" TYP.)
32	6" x 6" CONCRETE (4" TYP.)
33	6" x 6" CONCRETE (4" TYP.)
34	6" x 6" CONCRETE (4" TYP.)
35	6" x 6" CONCRETE (4" TYP.)
36	6" x 6" CONCRETE (4" TYP.)
37	6" x 6" CONCRETE (4" TYP.)
38	6" x 6" CONCRETE (4" TYP.)
39	6" x 6" CONCRETE (4" TYP.)
40	6" x 6" CONCRETE (4" TYP.)
41	6" x 6" CONCRETE (4" TYP.)
42	6" x 6" CONCRETE (4" TYP.)
43	6" x 6" CONCRETE (4" TYP.)
44	6" x 6" CONCRETE (4" TYP.)
45	6" x 6" CONCRETE (4" TYP.)
46	6" x 6" CONCRETE (4" TYP.)
47	6" x 6" CONCRETE (4" TYP.)
48	6" x 6" CONCRETE (4" TYP.)
49	6" x 6" CONCRETE (4" TYP.)
50	6" x 6" CONCRETE (4" TYP.)
51	6" x 6" CONCRETE (4" TYP.)
52	6" x 6" CONCRETE (4" TYP.)
53	6" x 6" CONCRETE (4" TYP.)
54	6" x 6" CONCRETE (4" TYP.)
55	6" x 6" CONCRETE (4" TYP.)
56	6" x 6" CONCRETE (4" TYP.)
57	6" x 6" CONCRETE (4" TYP.)
58	6" x 6" CONCRETE (4" TYP.)
59	6" x 6" CONCRETE (4" TYP.)
60	6" x 6" CONCRETE (4" TYP.)
61	6" x 6" CONCRETE (4" TYP.)
62	6" x 6" CONCRETE (4" TYP.)
63	6" x 6" CONCRETE (4" TYP.)
64	6" x 6" CONCRETE (4" TYP.)
65	6" x 6" CONCRETE (4" TYP.)
66	6" x 6" CONCRETE (4" TYP.)
67	6" x 6" CONCRETE (4" TYP.)
68	6" x 6" CONCRETE (4" TYP.)
69	6" x 6" CONCRETE (4" TYP.)
70	6" x 6" CONCRETE (4" TYP.)
71	6" x 6" CONCRETE (4" TYP.)
72	6" x 6" CONCRETE (4" TYP.)
73	6" x 6" CONCRETE (4" TYP.)
74	6" x 6" CONCRETE (4" TYP.)
75	6" x 6" CONCRETE (4" TYP.)
76	6" x 6" CONCRETE (4" TYP.)
77	6" x 6" CONCRETE (4" TYP.)
78	6" x 6" CONCRETE (4" TYP.)
79	6" x 6" CONCRETE (4" TYP.)
80	6" x 6" CONCRETE (4" TYP.)
81	6" x 6" CONCRETE (4" TYP.)
82	6" x 6" CONCRETE (4" TYP.)
83	6" x 6" CONCRETE (4" TYP.)
84	6" x 6" CONCRETE (4" TYP.)
85	6" x 6" CONCRETE (4" TYP.)
86	6" x 6" CONCRETE (4" TYP.)
87	6" x 6" CONCRETE (4" TYP.)
88	6" x 6" CONCRETE (4" TYP.)
89	6" x 6" CONCRETE (4" TYP.)
90	6" x 6" CONCRETE (4" TYP.)
91	6" x 6" CONCRETE (4" TYP.)
92	6" x 6" CONCRETE (4" TYP.)
93	6" x 6" CONCRETE (4" TYP.)
94	6" x 6" CONCRETE (4" TYP.)
95	6" x 6" CONCRETE (4" TYP.)
96	6" x 6" CONCRETE (4" TYP.)
97	6" x 6" CONCRETE (4" TYP.)
98	6" x 6" CONCRETE (4" TYP.)
99	6" x 6" CONCRETE (4" TYP.)
100	6" x 6" CONCRETE (4" TYP.)

FINISH SCHEDULE

F1	WALL	1/2" TYPE X GYPSUM BOARD - PAINTED -
F2	WALL	1/2" TYPE X GYPSUM BOARD - PAINTED -
F3	WALL	1/2" TYPE X GYPSUM BOARD - PAINTED -
F4	WALL	1/2" TYPE X GYPSUM BOARD - PAINTED -
F5	WALL	1/2" TYPE X GYPSUM BOARD - PAINTED -
F6	WALL	1/2" TYPE X GYPSUM BOARD - PAINTED -
F7	WALL	1/2" TYPE X GYPSUM BOARD - PAINTED -
F8	WALL	1/2" TYPE X GYPSUM BOARD - PAINTED -
F9	WALL	1/2" TYPE X GYPSUM BOARD - PAINTED -
F10	WALL	1/2" TYPE X GYPSUM BOARD - PAINTED -
F11	WALL	1/2" TYPE X GYPSUM BOARD - PAINTED -
F12	WALL	1/2" TYPE X GYPSUM BOARD - PAINTED -
F13	WALL	1/2" TYPE X GYPSUM BOARD - PAINTED -
F14	WALL	1/2" TYPE X GYPSUM BOARD - PAINTED -
F15	WALL	1/2" TYPE X GYPSUM BOARD - PAINTED -
F16	WALL	1/2" TYPE X GYPSUM BOARD - PAINTED -
F17	WALL	1/2" TYPE X GYPSUM BOARD - PAINTED -
F18	WALL	1/2" TYPE X GYPSUM BOARD - PAINTED -
F19	WALL	1/2" TYPE X GYPSUM BOARD - PAINTED -
F20	WALL	1/2" TYPE X GYPSUM BOARD - PAINTED -
F21	WALL	1/2" TYPE X GYPSUM BOARD - PAINTED -
F22	WALL	1/2" TYPE X GYPSUM BOARD - PAINTED -
F23	WALL	1/2" TYPE X GYPSUM BOARD - PAINTED -
F24	WALL	1/2" TYPE X GYPSUM BOARD - PAINTED -
F25	WALL	1/2" TYPE X GYPSUM BOARD - PAINTED -
F26	WALL	1/2" TYPE X GYPSUM BOARD - PAINTED -
F27	WALL	1/2" TYPE X GYPSUM BOARD - PAINTED -
F28	WALL	1/2" TYPE X GYPSUM BOARD - PAINTED -
F29	WALL	1/2" TYPE X GYPSUM BOARD - PAINTED -
F30	WALL	1/2" TYPE X GYPSUM BOARD - PAINTED -
F31	WALL	1/2" TYPE X GYPSUM BOARD - PAINTED -
F32	WALL	1/2" TYPE X GYPSUM BOARD - PAINTED -
F33	WALL	1/2" TYPE X GYPSUM BOARD - PAINTED -
F34	WALL	1/2" TYPE X GYPSUM BOARD - PAINTED -
F35	WALL	1/2" TYPE X GYPSUM BOARD - PAINTED -
F36	WALL	1/2" TYPE X GYPSUM BOARD - PAINTED -
F37	WALL	1/2" TYPE X GYPSUM BOARD - PAINTED -
F38	WALL	1/2" TYPE X GYPSUM BOARD - PAINTED -
F39	WALL	1/2" TYPE X GYPSUM BOARD - PAINTED -
F40	WALL	1/2" TYPE X GYPSUM BOARD - PAINTED -
F41	WALL	1/2" TYPE X GYPSUM BOARD - PAINTED -
F42	WALL	1/2" TYPE X GYPSUM BOARD - PAINTED -
F43	WALL	1/2" TYPE X GYPSUM BOARD - PAINTED -
F44	WALL	1/2" TYPE X GYPSUM BOARD - PAINTED -
F45	WALL	1/2" TYPE X GYPSUM BOARD - PAINTED -
F46	WALL	1/2" TYPE X GYPSUM BOARD - PAINTED -
F47	WALL	1/2" TYPE X GYPSUM BOARD - PAINTED -
F48	WALL	1/2" TYPE X GYPSUM BOARD - PAINTED -
F49	WALL	1/2" TYPE X GYPSUM BOARD - PAINTED -
F50	WALL	1/2" TYPE X GYPSUM BOARD - PAINTED -
F51	WALL	1/2" TYPE X GYPSUM BOARD - PAINTED -
F52	WALL	1/2" TYPE X GYPSUM BOARD - PAINTED -
F53	WALL	1/2" TYPE X GYPSUM BOARD - PAINTED -
F54	WALL	1/2" TYPE X GYPSUM BOARD - PAINTED -
F55	WALL	1/2" TYPE X GYPSUM BOARD - PAINTED -
F56	WALL	1/2" TYPE X GYPSUM BOARD - PAINTED -
F57	WALL	1/2" TYPE X GYPSUM BOARD - PAINTED -
F58	WALL	1/2" TYPE X GYPSUM BOARD - PAINTED -
F59	WALL	1/2" TYPE X GYPSUM BOARD - PAINTED -
F60	WALL	1/2" TYPE X GYPSUM BOARD - PAINTED -
F61	WALL	1/2" TYPE X GYPSUM BOARD - PAINTED -
F62	WALL	1/2" TYPE X GYPSUM BOARD - PAINTED -
F63	WALL	1/2" TYPE X GYPSUM BOARD - PAINTED -
F64	WALL	1/2" TYPE X GYPSUM BOARD - PAINTED -
F65	WALL	1/2" TYPE X GYPSUM BOARD - PAINTED -
F66	WALL	1/2" TYPE X GYPSUM BOARD - PAINTED -
F67	WALL	1/2" TYPE X GYPSUM BOARD - PAINTED -
F68	WALL	1/2" TYPE X GYPSUM BOARD - PAINTED -
F69	WALL	1/2" TYPE X GYPSUM BOARD - PAINTED -
F70	WALL	1/2" TYPE X GYPSUM BOARD - PAINTED -
F71	WALL	1/2" TYPE X GYPSUM BOARD - PAINTED -
F72	WALL	1/2" TYPE X GYPSUM BOARD - PAINTED -
F73	WALL	1/2" TYPE X GYPSUM BOARD - PAINTED -
F74	WALL	1/2" TYPE X GYPSUM BOARD - PAINTED -
F75	WALL	1/2" TYPE X GYPSUM BOARD - PAINTED -
F76	WALL	1/2" TYPE X GYPSUM BOARD - PAINTED -
F77	WALL	1/2" TYPE X GYPSUM BOARD - PAINTED -
F78	WALL	1/2" TYPE X GYPSUM BOARD - PAINTED -
F79	WALL	1/2" TYPE X GYPSUM BOARD - PAINTED -
F80	WALL	1/2" TYPE X GYPSUM BOARD - PAINTED -
F81	WALL	1/2" TYPE X GYPSUM BOARD - PAINTED -
F82	WALL	1/2" TYPE X GYPSUM BOARD - PAINTED -
F83	WALL	1/2" TYPE X GYPSUM BOARD - PAINTED -
F84	WALL	1/2" TYPE X GYPSUM BOARD - PAINTED -
F85	WALL	1/2" TYPE X GYPSUM BOARD - PAINTED -
F86	WALL	1/2" TYPE X GYPSUM BOARD - PAINTED -
F87	WALL	1/2" TYPE X GYPSUM BOARD - PAINTED -
F88	WALL	1/2" TYPE X GYPSUM BOARD - PAINTED -
F89	WALL	1/2" TYPE X GYPSUM BOARD - PAINTED -
F90	WALL	1/2" TYPE X GYPSUM BOARD - PAINTED -
F91	WALL	1/2" TYPE X GYPSUM BOARD - PAINTED -
F92	WALL	1/2" TYPE X GYPSUM BOARD - PAINTED -
F93	WALL	1/2" TYPE X GYPSUM BOARD - PAINTED -
F94	WALL	1/2" TYPE X GYPSUM BOARD - PAINTED -
F95	WALL	1/2" TYPE X GYPSUM BOARD - PAINTED -
F96	WALL	1/2" TYPE X GYPSUM BOARD - PAINTED -
F97	WALL	1/2" TYPE X GYPSUM BOARD - PAINTED -
F98	WALL	1/2" TYPE X GYPSUM BOARD - PAINTED -
F99	WALL	1/2" TYPE X GYPSUM BOARD - PAINTED -
F100	WALL	1/2" TYPE X GYPSUM BOARD - PAINTED -

FLOOR PLAN NOTES

NOTE: SEE CIVIL DRAWINGS FOR LOCATIONS OF WALLS AND CURBS.
 NOTE: SEE SHEET A-1 & A-2 FOR DOOR SCHEDULE AND
 DOOR WINDOW TYPES.
 NOTE: FOR FINISH DETAILS SEE STRUCTURAL.
 NOTE: CONTRACTOR TO FOLLOW MANUFACTURER'S INSTRUCTIONS FOR
 INSTALLATION OF ALL FINISHES.
 NOTE: EXTERIOR FINISHES ARE TO BE BRICK, CONCRETE AND
 STONE AT ALL OTHER LOCATIONS. BRICK ARE AT END OF WALL.
 * = IMPERMEABLE GLASS.
 NOTE: DIM IN THE SCENE ROOM TO BE PROVIDED WITH A RUBBER
 FOOTING WITH A RUBBER BARRIER. FINISHES TO BE BRICK, CONCRETE
 AND STONE AT ALL OTHER LOCATIONS. BRICK ARE AT END OF WALL.
 NOTE: SEE SHEET A-1 & A-2 FOR DOOR SCHEDULE AND WINDOW TYPES.
 NOTE: SEE SHEET A-1 & A-2 FOR DOOR SCHEDULE AND WINDOW TYPES.
 NOTE: SEE SHEET A-1 & A-2 FOR DOOR SCHEDULE AND WINDOW TYPES.