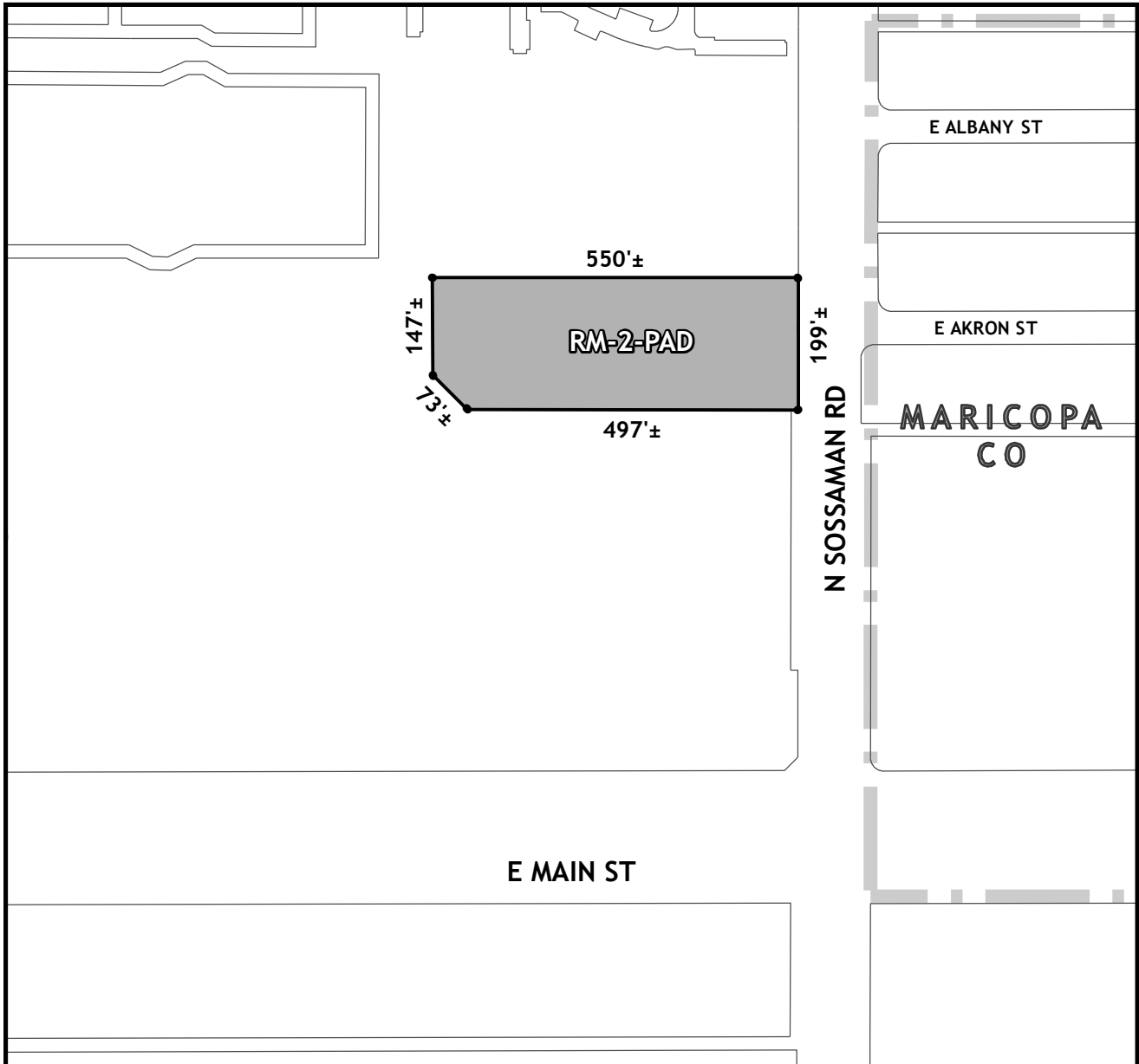




# OFFICIAL SUPPLEMENTARY ZONING MAP AMENDING THE CITY OF MESA ZONING MAP



**CASE:** ZON21-00874  
**ACREAGE:** 2.8±  
**REQUEST:** Rezone from Limited Commercial (LC) to Multiple Residence-2 with a Planned Area Development Overlay (RM-2-PAD) and Site Plan Review.  
  
**ORDINANCE:** 5852

Please be advised that the attached zoning changes were approved by the Mesa City Council on May 20, 2024 by Ordinance # 5852. If you have any questions concerning these changes, contact the City of Mesa Planning Division at 480-644-2385.

\_\_\_\_\_ **ATTEST:** \_\_\_\_\_ **DATE:** \_\_\_\_\_  
**MAYOR** **CITY CLERK**