



PLANNING & ZONING BOARD

December 16, 2020



ZON20-00490



Request

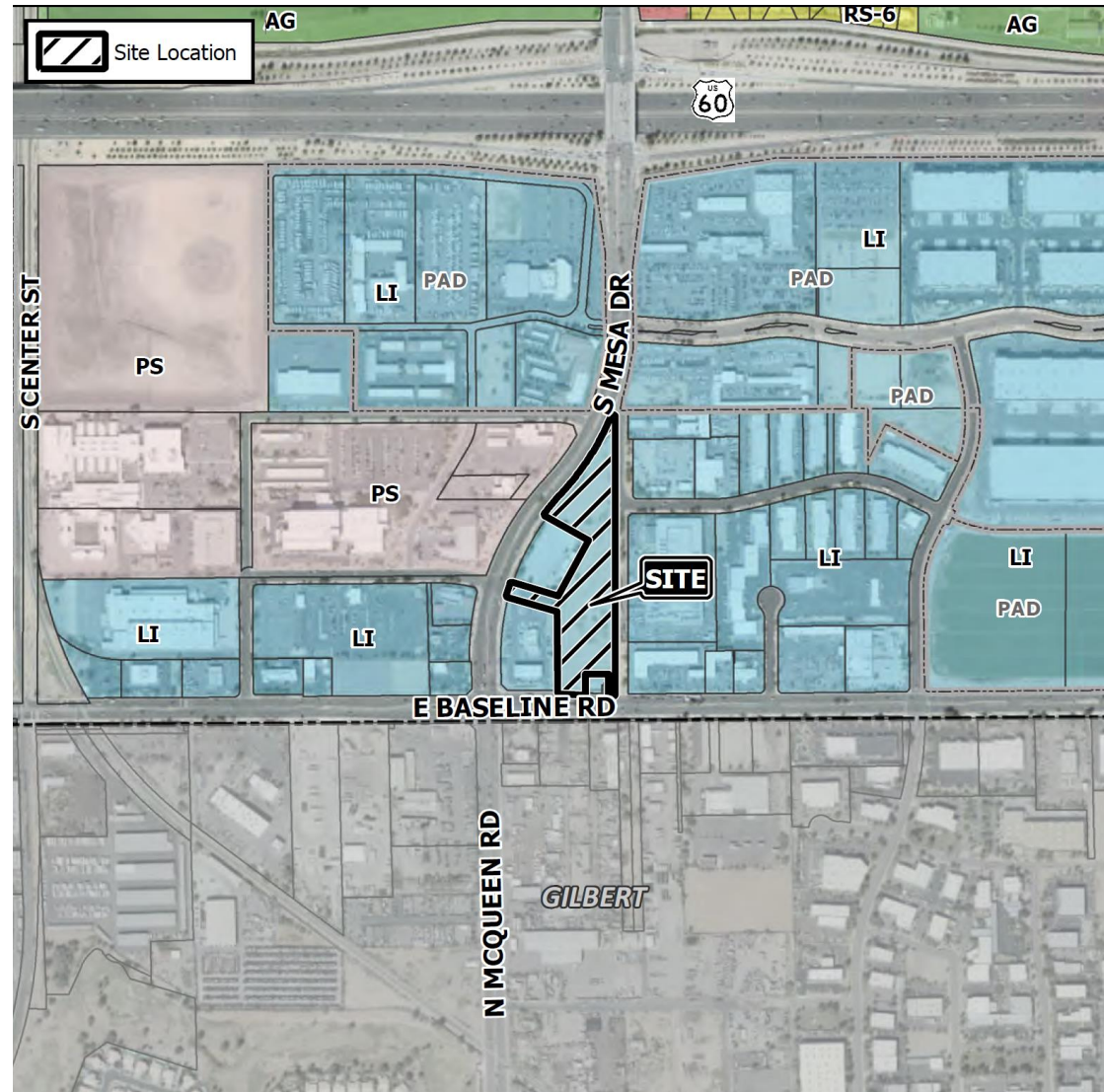
- Site Plan Review

Purpose

- Proposed hotel

Location

- East of Mesa Drive on the north side of Baseline Road





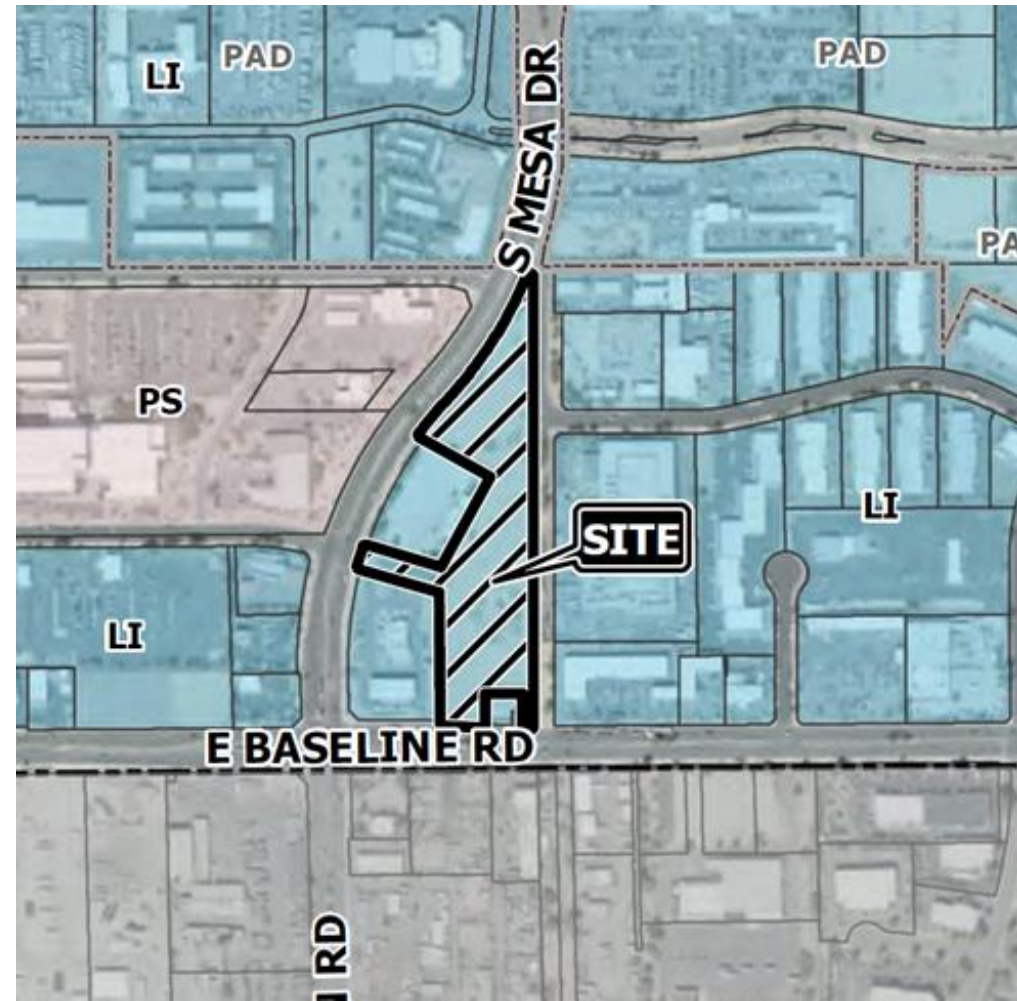
General Plan

Employment

- Provide for a wide range of employment opportunities
- May include supporting retail and office areas

Zoning

- Light Industrial (LI)
 - Hotels are a permitted use



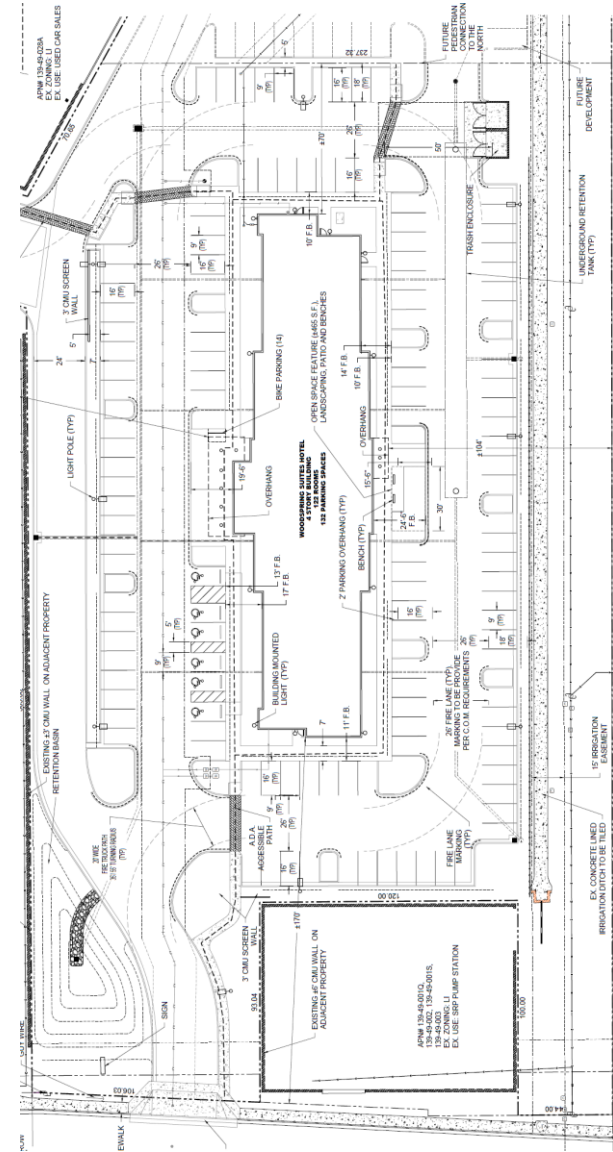
Street View



Looking north from Baseline Road

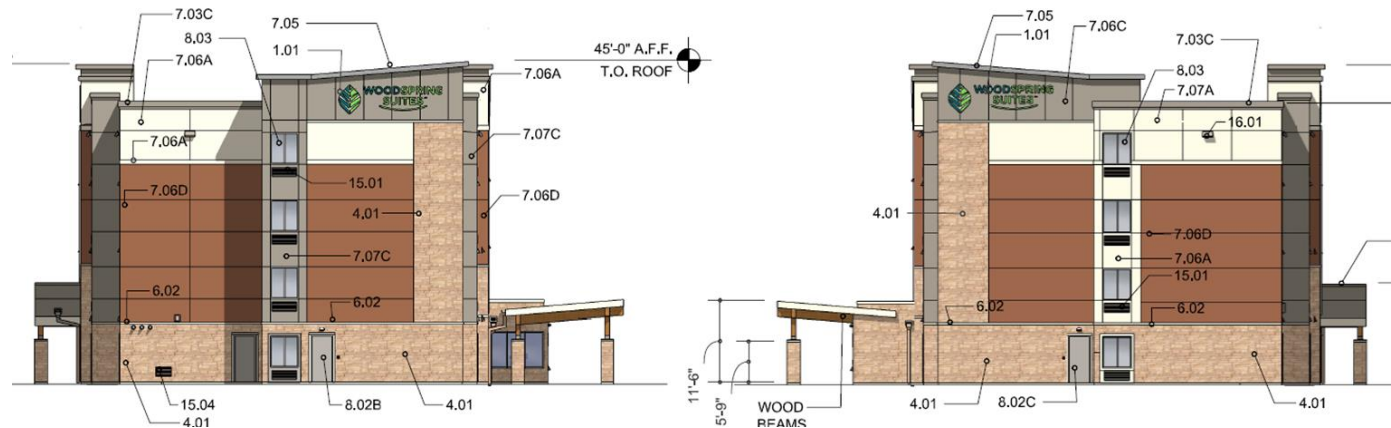
Site Plan

- Woodsprings Suites Hotel
- Main entrance facing Mesa Drive



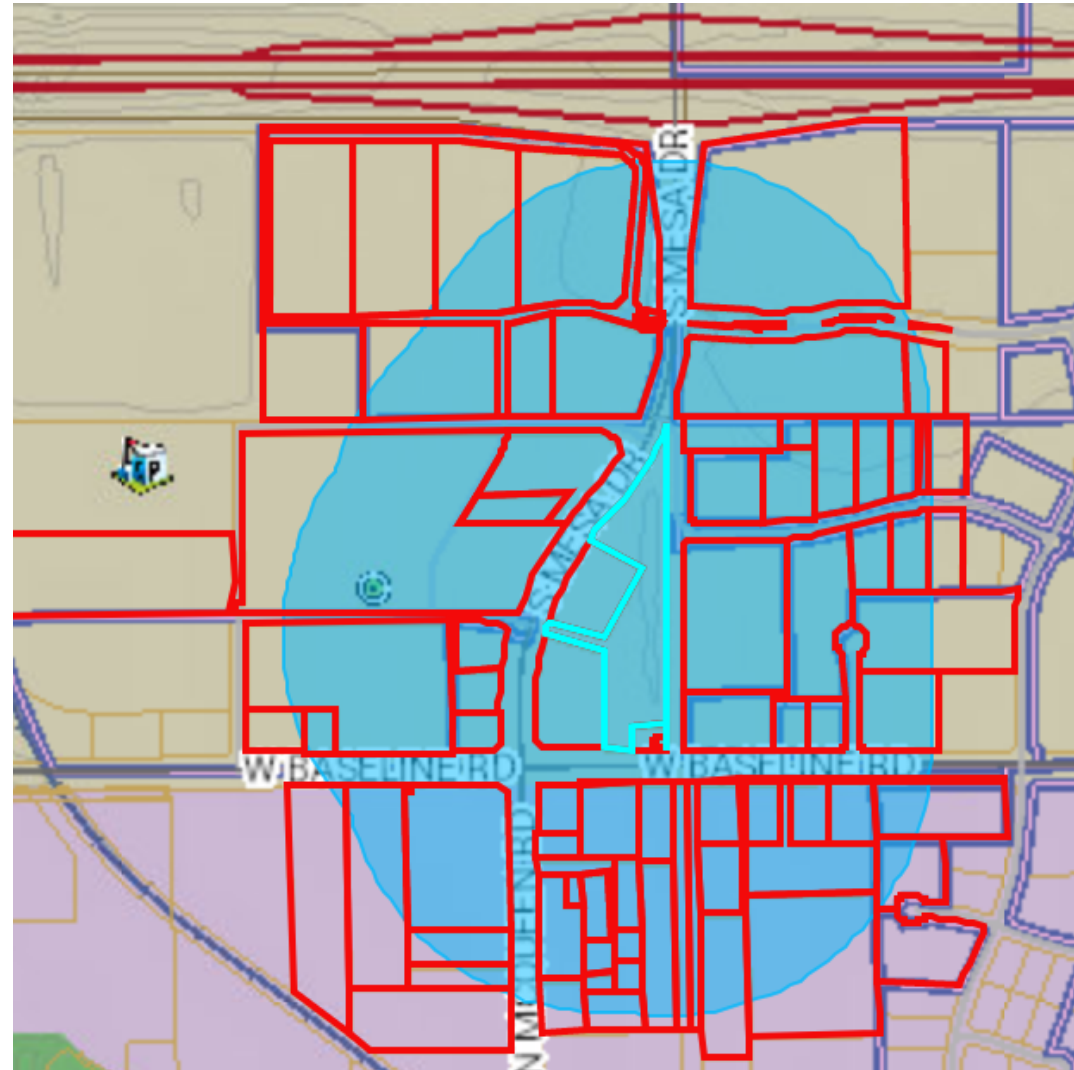
Design Review

• November 10, 2020



Citizen Participation

- Property owners within 1,000'
- HOAs & Registered Neighborhoods
- No concerns



Summary

Findings

- ✓ Complies with the 2040 Mesa General Plan
- ✓ Meets the review criteria for Site Plan Review outlined in Section 11-69-5 of the MZO

Staff Recommendation Approval with Conditions



PLANNING & ZONING BOARD

December 16, 2020