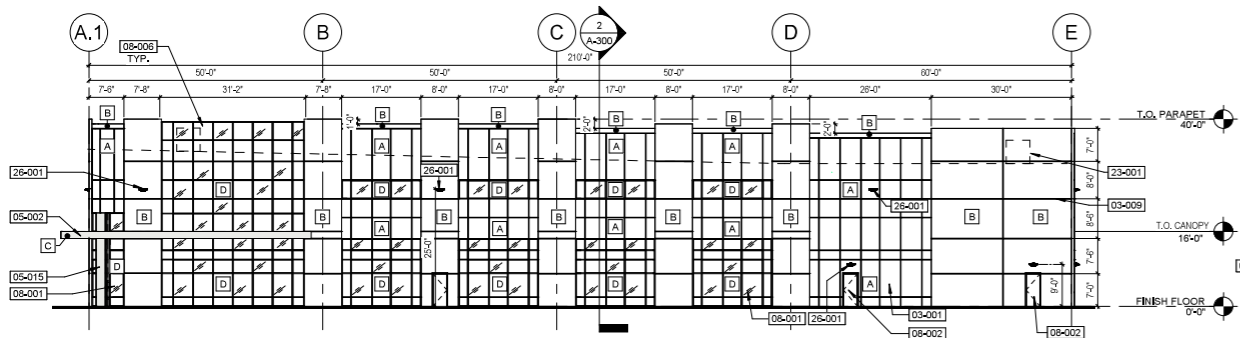
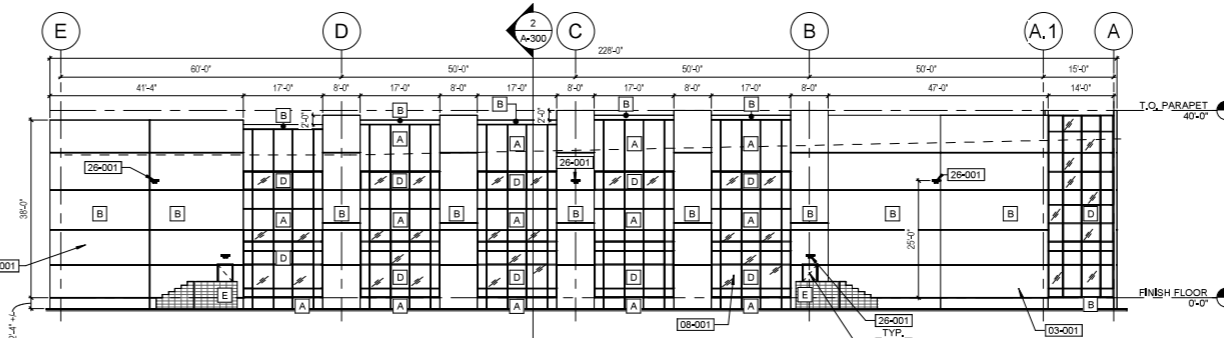


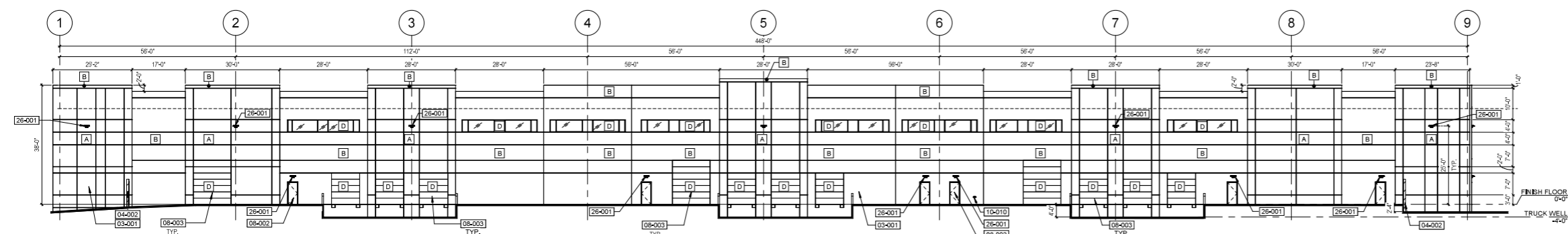
1 WEST ELEVATION
SCALE 1/16" = 1'-0"



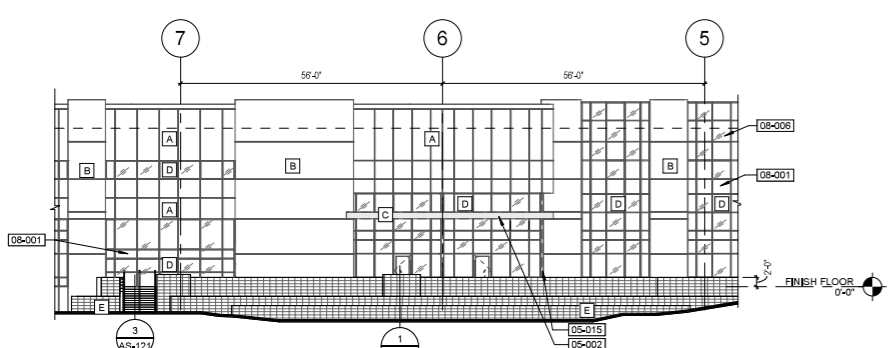
2 SOUTH ELEVATION
SCALE 1/16" = 1'-0"



3 NORTH ELEVATION
SCALE 1/16" = 1'-0"



4 EAST ELEVATION
SCALE 1/16" = 1'-0"



5 WEST PLANTER ELEVATION
SCALE 1/16" = 1'-0"

EXTERIOR MATERIAL LEGEND

COLOR PALETTE "A" PER LONGBOW DESIGN GUIDELINES

- A** SW7015 - GAUNTLET GRAY, LR17
- B** SW9167 - POLISHED CONCRETE, LR32
- C** ACCENT COLOR
DEHW10 - ICY WHITE
- D** STOREFRONT SYSTEM - 1" INSULATED GLAZING
VIBRO PRACTICA AND SOLARSHAI 70" WITH
CLEAR ANODIZED ALUMINUM FRAME
- E** 8 X 8 X 16" STANDARD CMU
OLDCASTLE SUPERLITE-ECHOLON
INTEGRAL COLOR
MOJAVE BROWN-COCOA BROWN

KEYNOTES

- 03-001 EXTERIOR CONCRETE TILT PANEL WALL - UNPAINTED AT INTERIOR. PAINTED AT EXTERIOR PER ELEVATIONS INCLUDING BACK SIDE OF PARAPET.
- 03-009 TILT PANEL REVEAL
- 04-002 CMU GUARDRAIL, 42" MIN @ AFF
- 05-002 STEEL CANOPY, PAINTED
- 05-015 WIDE FLANGE COLUMN
- 06-001 STOREFRONT SYSTEM
- 08-002 HOLLOW METAL DOOR, PAINTED
- 08-003 OVERHEAD SECTIONAL DOOR, PAINTED
- 08-006 SPANDREL AT STOREFRONT SYSTEM
- 10-010 FIRE DEPARTMENT CONNECTION
- 23-001 FUTURE ROOF-MECHANICAL UNIT SCREENED BY PARAPET
- 26-001 WALL-MOUNTED LIGHT FIXTURE

DEUTSCH
ARCHITECTURE GROUP

4600 E INDIAN SCHOOL RD.
PHOENIX, ARIZONA 85018
602.940.2929 2929.COM

REGISTERED ARCHITECT
66385
KAREN
OHMANN
NOV 10 2009
Expires 10/31/2027

LONGBOW 202 SHELL
BUILDING
5818 E. MCDOWELL ROAD, MESA, AZ 85215

FIRST ISSUED: 11/07/24

REVISIONS

No.	DATE	DESCRIPTION

PROJECT NO: 24154.00
DRAWN BY: CM, RH, FO
CHECKED BY: KO
COPYRIGHT 2024: DEUTSCH ARCHITECTURE GROUP

EXTERIOR ELEVATIONS

NORTH ELEVATION			EAST ELEVATION		
MATERIAL	AREA (SF)	%	MATERIAL	AREA (SF)	%
CONCRETE TILT WALL			CONCRETE TILT WALL		
COLOR A	1789	0.190	COLOR A	6903	0.394
COLOR B	5478	0.582	COLOR B	8396	0.480
WINDOWS	2119	0.225	WINDOWS	743	0.042
CANOPY	0	0.000	CANOPY	0	0.000
OH DOOR	0	0.000	OH DOOR	1322	0.076
HM DOOR	24	0.003	HM DOOR	143	0.008
	9410	1.000		17507	1.000

SOUTH ELEVATION			WEST ELEVATION		
MATERIAL	AREA (SF)	%	MATERIAL	AREA (SF)	%
CONCRETE TILT WALL			CONCRETE TILT WALL		
COLOR A	2350	0.280	COLOR A	5497	0.297
COLOR B	3263	0.389	COLOR B	6784	0.367
WINDOWS	2653	0.316	WINDOWS	5988	0.324
CANOPY	79	0.009	CANOPY	238	0.013
OH DOOR	0	0.000	OH DOOR	0	0.000
HM DOOR	48	0.006	HM DOOR	0	0.000
	8393	1.000		18507	1.000

© 2024 DEUTSCH ARCHITECTURE GROUP 11/7/2024 12:54:45 PM C:\Users\kjhay\Documents\24154.00 West Longbow and 5818 McDowell and 5818 Corda_Central_R_L_Midway\DC17Rev04

CONCEPTUAL AND SCHEMATIC DESIGNS, INCLUDING RENDERINGS, ARE CREATED FOR THE SOLE PURPOSE OF DEVELOPING A DESIGN CONCEPT. THEY ARE PART OF THE OVERALL DESIGN PROCESS THAT ULTIMATELY LEADS TO MORE DETAILED DRAWINGS, BUT THE INFORMATION DEPICTED IN THESE DESIGNS IS INCOMPLETE AND NOT INTENDED TO REPRESENT THE FULL SCOPE OF THE PROJECT DESIGN. THE USE OF THESE CONCEPTUAL AND SCHEMATIC DESIGNS/RENDERINGS FOR ANY PURPOSE OTHER THAN AS INTENDED BY THE ARCHITECT IS PROHIBITED.

PRELIMINARY - NOT FOR CONSTRUCTION

A-200

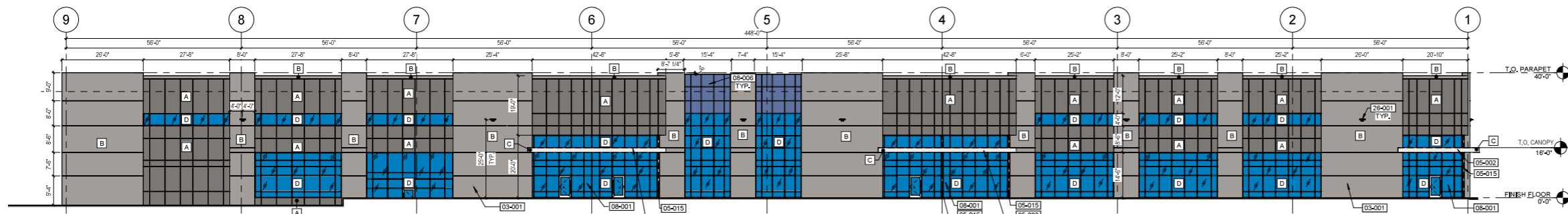
EXTERIOR MATERIAL LEGEND

COLOR PALETTE "A" PER LONGBOW DESIGN GUIDELINES

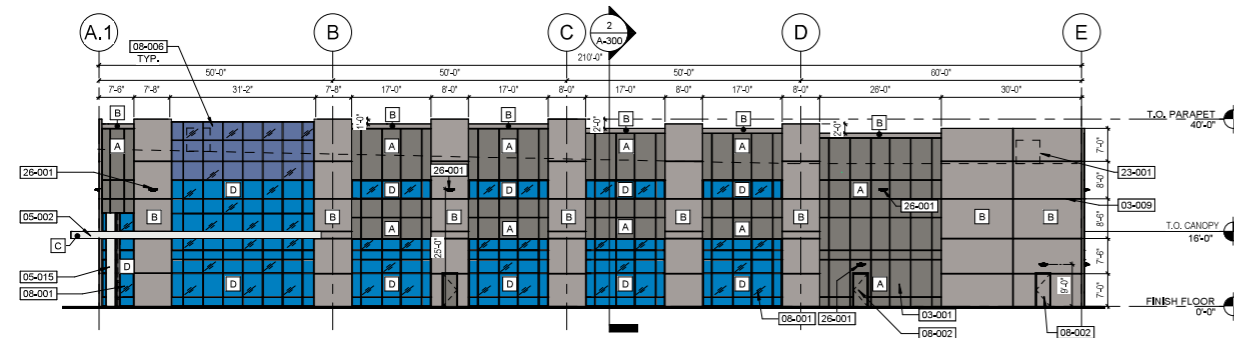
- A** SW7019 - GAUNTLET GRAY, LR.V17
- B** SW9167 - POLISHED CONCRETE, LR.V32
- C** ACCENT COLOR DEHW10 - ICY WHITE
- D** STOREFRONT SYSTEM: 1" INSULATED GLAZING VIBRO PRACITCA AND SOLARSHAI 777 WITH CLEAR ANODIZED ALUMINUM FRAME
- E** 8" X 8" X 1/2" STANDARD CMU OLDCASTLE SUPERLITE-ECHOLON INTEGRAL COLOR MOJAVE BROWN-COCOA BROWN

KEYNOTES

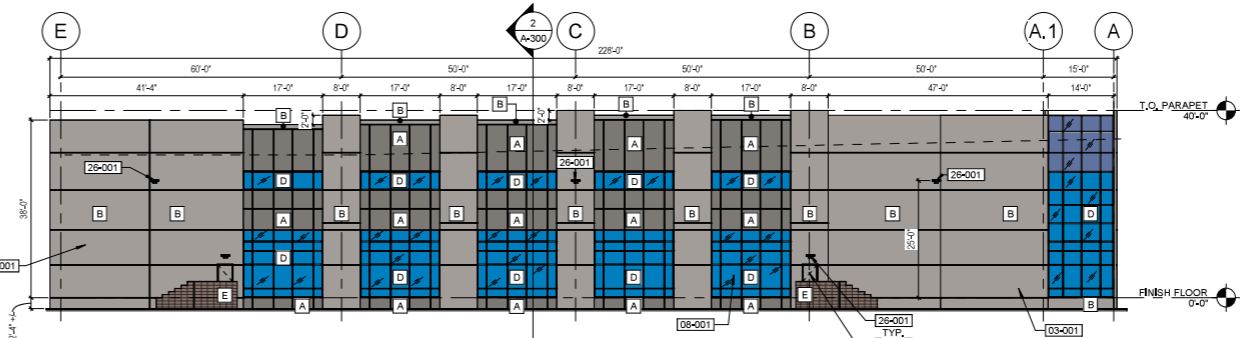
- 03-001 EXTERIOR CONCRETE TILT PANEL WALL - UNPAINTED AT INTERIOR. PAINTED AT EXTERIOR PER ELEVATIONS INCLUDING BACK SIDE OF PARAPET.
- 03-009 TILT PANEL REVEAL
- 04-002 CMU GUARDRAIL, 42" MIN @ AFF
- 05-002 STEEL CANOPY, PAINTED
- 05-015 WIDE FLANGE COLUMN
- 05-001 STOREFRONT SYSTEM
- 08-002 HOLLOW METAL DOOR, PAINTED
- 08-003 OVERHEAD SECTIONAL DOOR, PAINTED
- 08-006 SPANDREL AT STOREFRONT SYSTEM
- 10-010 FIRE DEPARTMENT CONNECTION
- 23-001 FUTURE ROOF-MECHANICAL UNIT SCREENED BY PARAPET
- 26-001 WALL-MOUNTED LIGHT FIXTURE



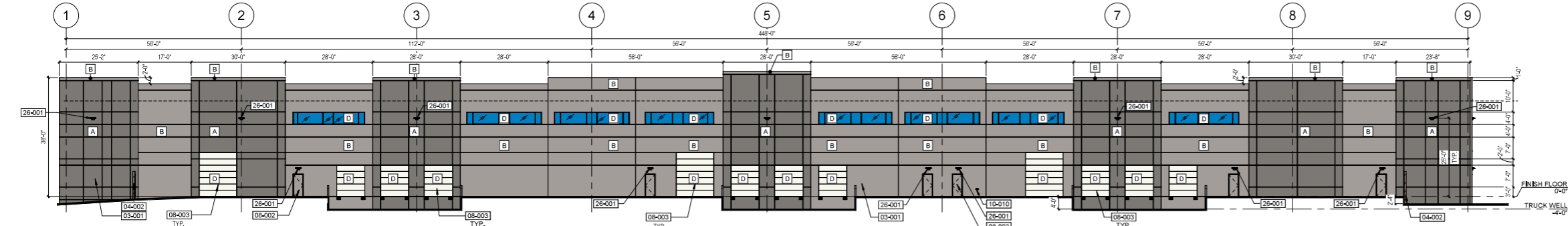
1 WEST ELEVATION
SCALE 1/16" = 1'-0"



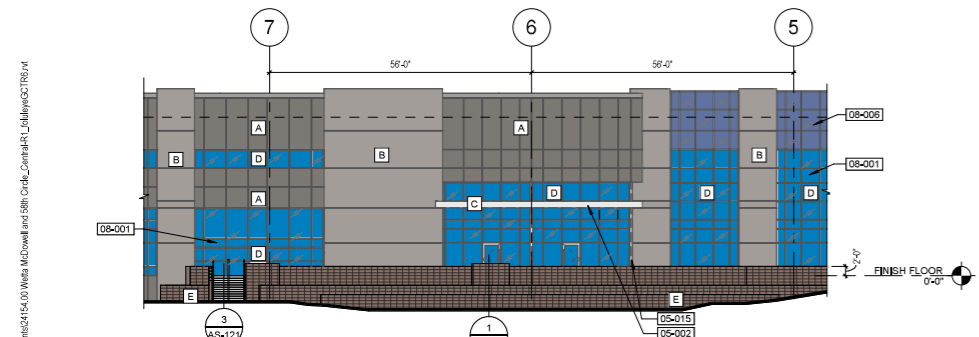
2 SOUTH ELEVATION
SCALE 1/16" = 1'-0"



3 NORTH ELEVATION
SCALE 1/16" = 1'-0"



4 EAST ELEVATION
SCALE 1/16" = 1'-0"



5 WEST PLANTER ELEVATION
SCALE 1/16" = 1'-0"

NORTH ELEVATION			EAST ELEVATION		
MATERIAL	AREA (SF)	%	MATERIAL	AREA (SF)	%
CONCRETE TILT WALL			CONCRETE TILT WALL		
COLOR A	1789	0.190	COLOR A	6903	0.394
COLOR B	5478	0.582	COLOR B	8396	0.480
WINDOWS	2119	0.225	WINDOWS	743	0.042
CANOPY	0	0.000	CANOPY	0	0.000
OH DOOR	0	0.000	OH DOOR	1322	0.076
HM DOOR	24	0.003	HM DOOR	143	0.008
TOTAL	9410	1.000	TOTAL	17507	1.000

SOUTH ELEVATION			WEST ELEVATION		
MATERIAL	AREA (SF)	%	MATERIAL	AREA (SF)	%
CONCRETE TILT WALL			CONCRETE TILT WALL		
COLOR A	2350	0.280	COLOR A	5497	0.297
COLOR B	3263	0.389	COLOR B	6784	0.367
WINDOWS	2653	0.316	WINDOWS	5988	0.324
CANOPY	79	0.009	CANOPY	238	0.013
OH DOOR	0	0.000	OH DOOR	0	0.000
HM DOOR	48	0.006	HM DOOR	0	0.000
TOTAL	8393	1.000	TOTAL	18507	1.000

LONGBOW 202 SHELL BUILDING

5818 E. MCDOWELL ROAD, MESA, AZ 85215

FIRST ISSUED: 11/07/24

No.	DATE	DESCRIPTION

PROJECT NO: 24154.00
DRAWN BY: CM, RH, FO
CHECKED BY: KO
COPYRIGHT 2024: DEUTSCH ARCHITECTURE GROUP

EXTERIOR ELEVATIONS

A-200

PRELIMINARY - NOT FOR CONSTRUCTION

CONCEPTUAL AND SCHEMATIC DESIGNS, INCLUDING RENDERINGS, ARE CREATED FOR THE SOLE PURPOSE OF DEVELOPING A DESIGN CONCEPT. THEY ARE PART OF THE OVERALL DESIGN PROCESS THAT ULTIMATELY LEADS TO MORE DETAILED DRAWINGS, BUT THE INFORMATION DEPICTED IN THESE DESIGNS IS INCOMPLETE AND NOT INTENDED TO REPRESENT THE FULL SCOPE OF THE PROJECT DESIGN. THE USE OF THESE CONCEPTUAL AND SCHEMATIC DESIGNS/RENDERINGS FOR ANY PURPOSE OTHER THAN AS INTENDED BY THE ARCHITECT IS PROHIBITED.



Longbow 202 Shell Building

Exterior Perspective

24154.00

11/07/24

1

SOUTHWEST PERSPECTIVE - DAYTIME

SCALE

1/4" = 1'-0"

CONCEPTUAL AND SCHEMATIC DESIGNS, INCLUDING RENDERINGS, ARE CREATED FOR THE SOLE PURPOSE OF DEVELOPING A DESIGN CONCEPT. THEY ARE PART OF THE OVERALL DESIGN PROCESS THAT ULTIMATELY LEADS TO MORE DETAILED DRAWINGS, BUT THE INFORMATION DEPICTED IN THESE DESIGNS IS INCOMPLETE AND NOT INTENDED TO REPRESENT THE FULL SCOPE OF THE PROJECT DESIGN. THE USE OF THESE CONCEPTUAL AND SCHEMATIC DESIGNS/RENDERINGS FOR ANY PURPOSE OTHER THAN AS INTENDED BY THE ARCHITECT IS PROHIBITED.



**4600 E INDIAN SCHOOL RD.
PHOENIX, ARIZONA 85018
602.840.2929 2929.COM**



2

SOUTHWEST PERSPECTIVE - NIGHTTIME

SCALE:

CONCEPTUAL AND SCHEMATIC DESIGNS, INCLUDING RENDERINGS, ARE CREATED FOR THE SOLE PURPOSE OF DEVELOPING A DESIGN CONCEPT. THEY ARE PART OF THE OVERALL DESIGN PROCESS THAT ULTIMATELY LEADS TO MORE DETAILED DRAWINGS, BUT THE INFORMATION DEPICTED IN THESE DESIGNS IS INCOMPLETE AND NOT INTENDED TO REPRESENT THE FULL SCOPE OF THE PROJECT DESIGN. THE USE OF THESE CONCEPTUAL AND SCHEMATIC DESIGNS/RENDERINGS FOR ANY PURPOSE OTHER THAN AS INTENDED BY THE ARCHITECT IS PROHIBITED.

Longbow 202 Shell Building

EXTERIOR PERSPECTIVE

24154.00

11/07/24



4600 E INDIAN SCHOOL RD.
PHOENIX, ARIZONA 85018
602.840.2929 2929.COM



3 NORTHWEST PERSPECTIVE
SCALE:

CONCEPTUAL AND SCHEMATIC DESIGNS, INCLUDING RENDERINGS, ARE CREATED FOR THE SOLE PURPOSE OF DEVELOPING A DESIGN CONCEPT. THEY ARE PART OF THE OVERALL DESIGN PROCESS THAT ULTIMATELY LEADS TO MORE DETAILED DRAWINGS, BUT THE INFORMATION DEPICTED IN THESE DESIGNS IS INCOMPLETE AND NOT INTENDED TO REPRESENT THE FULL SCOPE OF THE PROJECT DESIGN. THE USE OF THESE CONCEPTUAL AND SCHEMATIC DESIGNS/RENDERINGS FOR ANY PURPOSE OTHER THAN AS INTENDED BY THE ARCHITECT IS PROHIBITED.

Longbow 202 Shell Building

EXTERIOR PERSPECTIVE

24154.00

11/07/24



4600 E INDIAN SCHOOL RD.
PHOENIX, ARIZONA 85018
602.840.2929 2929.COM



4

CENTER WEST ENTRY PERSPECTIVE

SCALE

1/4" = 1'-0"

CONCEPTUAL AND SCHEMATIC DESIGNS, INCLUDING RENDERINGS, ARE CREATED FOR THE SOLE PURPOSE OF DEVELOPING A DESIGN CONCEPT. THEY ARE PART OF THE OVERALL DESIGN PROCESS THAT ULTIMATELY LEADS TO MORE DETAILED DRAWINGS, BUT THE INFORMATION DEPICTED IN THESE DESIGNS IS INCOMPLETE AND NOT INTENDED TO REPRESENT THE FULL SCOPE OF THE PROJECT DESIGN. THE USE OF THESE CONCEPTUAL AND SCHEMATIC DESIGNS/RENDERINGS FOR ANY PURPOSE OTHER THAN AS INTENDED BY THE ARCHITECT IS PROHIBITED.

Longbow 202 Shell Building

EXTERIOR PERSPECTIVE

24154.00

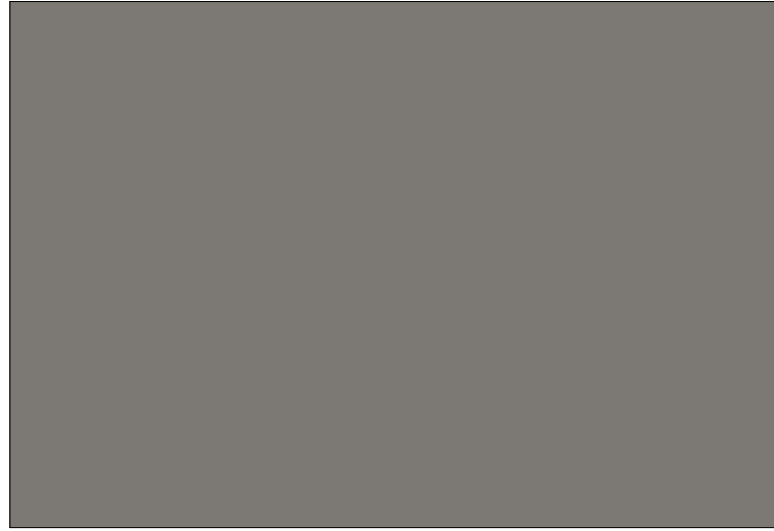
11/07/24



4600 E INDIAN SCHOOL RD.
PHOENIX, ARIZONA 85018
602.840.2929 2929.COM

COLOR LEGEND

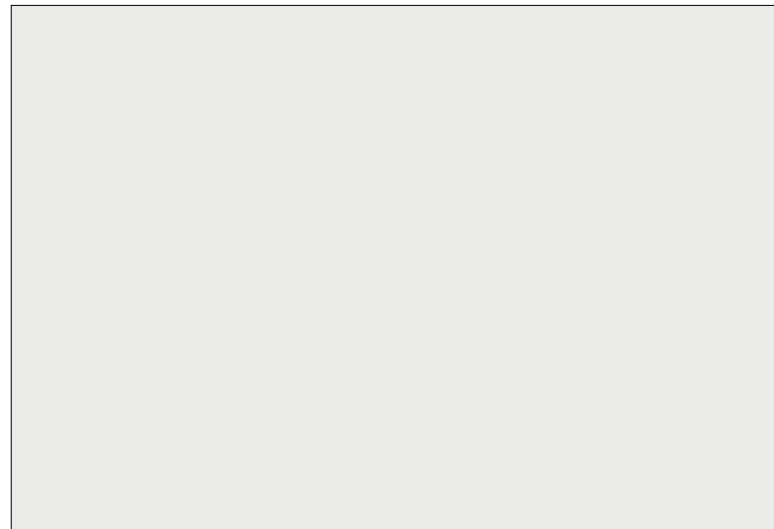
COLOR PALETTE "A" PER LONGBOW DESIGN GUIDELINES



COLOR A:
SW7019 - GAUNTLET GRAY, LRV17



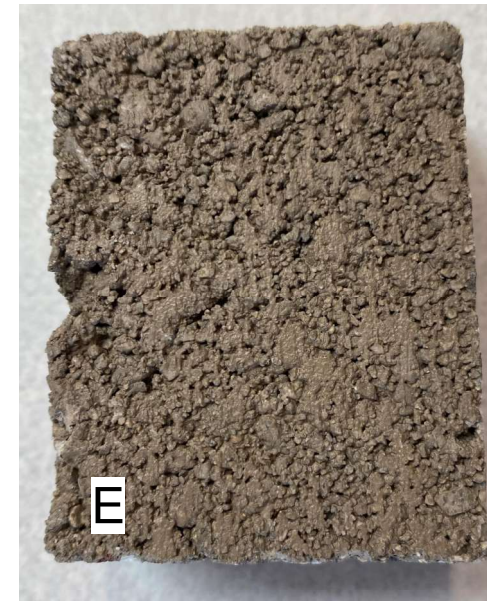
COLOR B:
SW9167 - POLISHED CONCRETE, LRV32



COLOR C: ACCENT COLOR
DEHW10 - ICY WHITE



STOREFRONT SYSTEM: 1" INSULATED GLAZING, VIBRO "PACIFICA AND SOLARBAN 70" WITH CLEAR ANNOIDIZED ALUMINUM FRAME



MASONRY SITE WALLS:
OLDCASTLE PRECISION INTEGRAL COLOR,
MOJAVE BROWN-COCOA BROWN

LONGBOW 202 SHELL BUILDING

COLOR AND MATERIAL BOARD

24154.00

07/11/24



4600 E INDIAN SCHOOL RD.
PHOENIX, ARIZONA 85018
602.840.2929 2929.COM