



Capital Improvement PROGRAM

FY 2027 – 2031

Presented By:

Brian A. Ritschel – Office of Management and Budget Director
Chris Lynch – Office of Management and Budget CIP Coordinator

Date:

April 16, 2026



Introduction to the CIP Funding Plan

- This is a funding plan
 - Allows for the scheduling and allocation of financial resources to address infrastructure needs
- **8-year plan developed**
 - Aligns infrastructure projects with the City's goals
 - Unfunded projects remain part of the plan and considered each year in the prioritization of infrastructure needs and resource availability
- **5-year plan approved by Council per Charter**
 - Exclusively includes projects with identified funding sources
- **First year funding is appropriated as part of the annual budget adoption**

CIP Funding Sources

Utility

- Utility Revenues
- Utility Revenue Obligations
 - Capacity Fee
- Utility Taxable Obligations
 - CMC Steel

Non-Utility

- Local Revenues
- Regional Awards/Grants
- General Obligation (GO) Bonds
- Excise Tax Obligation

Operations and Maintenance

One-time start up purchases and ongoing costs are reviewed and included in the financial forecast with the completion of a project to ensure the City can meet the operational requirements.

Examples of ongoing:

- Staffing a new fire station, library, or utility plant expansion
- Landscape maintenance at City parks

Examples of one-time:

- Furniture, fixtures, and equipment
- Vehicles

Current Challenges in CIP



Rising labor costs and continued cost pressures across commodities, services, and contracts



Inflation is moderating, but prices remain elevated and have not declined from prior increases



Keeping up with growth while maintaining current infrastructure

Utility Capital Improvement Program



Signal Butte Water Treatment Plant



Broadway Road

Completed Utility Projects FY 25/26

Water Resources

- Central Mesa Reuse Pipeline
- Harris Drive Water Main Improvements
- Sewer Diversion Structure Rehabs: Sites 6, 14, 15, 19, 21, 28, 39, 41, 42, 43
- McDowell Rd. Water Transmission Main
- McKellips Rd. Water Transmission Main
- Falcon Field & Desert Sage Water Transmission Main
- Hohokam Irrigation Service & Waterline

Energy Resources

- Gas Quarter Sections (44B & 44D – Phase 1)
- LG Gas Line Construction
- Westwood Street Gas Main
- New Services: CPLC Residences on Main



LG Gas Line

Current Utility CIP Projects

Energy Resources

- Gantzel Road High Pressure Gas Main (Gas)
- Clausen Gate Station (Gas)
- Val Vista Pueblo to US 60 (Gas)
- AZ Farms Gas Line Replacement (Gas)
- New Services (GRID, Cabana Mesa)
- Transform 17 (Design)

Energy and Water Resources Joint Projects

- Smart Metering
- Broadway Road



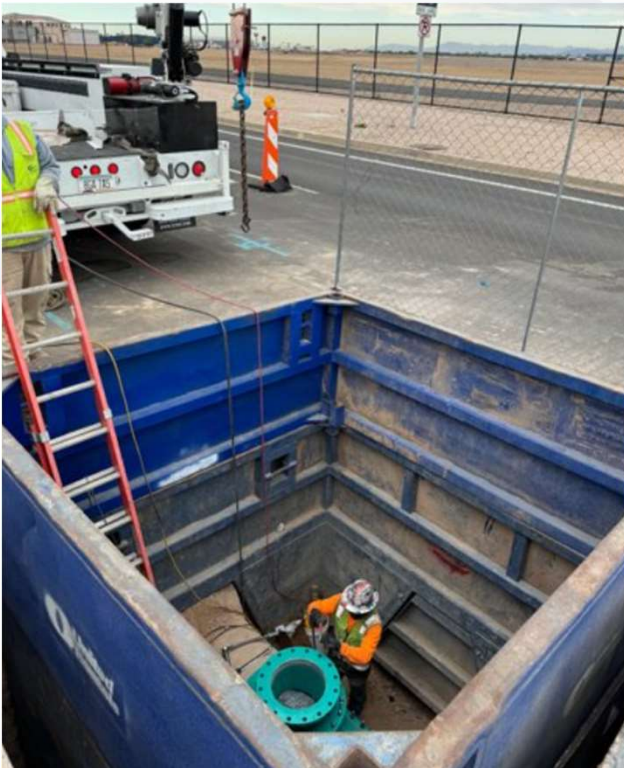
Signal Butte Water Treatment Plant

Water Resources

- Signal Butte Water Treatment Plant Phase 2
- New Groundwater Wells (DW24, DW25, DW26, DW30, DW33)
- GWRP Consolidated Reliability Improvements



Utility Projects to Begin Construction FY 26/27



Water Resources

- Greenfield Aeration Basin Concrete Rehabilitation
- NWWRP Programmable Logic Controller Upgrade
- NWWRP Solids Stream Equipment Replacement
- Broadway Rd. Sewer Relocation - UPRR Tracks
- Baseline Rd. Interceptor Sewer Rehabilitation
- Sewer Improvements – Various Locations (Phase 1A, 2, 3)
- Noche de Paz Lift Station (LS6) & SCS (SS3) Rehabilitation

Energy Resources

- 69kV Looping (Electric)
- Country Club & Southern (Gas)
- New Services (Club & Main, AC Hotel)

Capacity Fee Projects in FY 26/27

Water Resources

- Signal Butte Water Treatment Plant Expansion
- East Mesa Water Interconnect Pipes
- New Groundwater Wells and Collection Lines
- New Lift Stations
- New Pump Station
- New Sewer Lines



New Groundwater Well

Future Utility Projects Needed

Water Resources

- Brown Road Water Treatment Plant (BRWTP) Main Switchgear and Transformers Replacement (Construction)
- SRP\CAP Interconnect Facility
- Advanced Water Purification
- Bartlett Dam and Reservoir Expansion

Energy Resources

- Transwestern Gate Station (Construction)
- Bella Vista Road High Pressure Upgrade (Gas)
- Clausen Gate Station Phase 2 (Gas)
- Transform 17 (Construction)

Solid Waste

- East & West Mesa Service Centers
- Transfer Station
- Material Recovery Facility



Utility Lifecycle Purchases

- Vehicle Replacements
- Pumps and Motors
- Utility Valves
- Fire Hydrants
- Compliance Lab Equipment
- Plant Equipment





Non-Utility Capital Improvement Program



Gateway Library

Gateway Library



NE Public Safety Facility

Northeast Public Safety Facility

NE Public Safety Facility



General Obligation (G.O.) Bonds Issued

	<u>Authorized</u>	<u>Issued thru 2026 CY</u>	<u>% Issued</u>
Parks & Culture			
2018	\$ 91,200,000	\$ 91,200,000	100%
2024	\$ 170,000,000	\$ 18,000,000	11%
Library			
2018	\$ 19,800,000	\$ 19,800,000	100%
Public Safety			
2013	\$ 51,700,000	\$ 51,700,000	100%
2018	\$ 85,000,000	\$ 85,000,000	100%
2022	\$ 157,000,000	\$ 94,000,000	60%
2024	\$ 90,000,000	\$ -	0%
Streets			
2013	\$ 79,100,000	\$ 79,100,000	100%
2020	\$ 100,000,000	\$ 75,090,000	75%

Non-Utility Projects Completed in FY 25/26

- **Public Safety:** Northeast Public Safety Facility
- **Library:** Gateway Library
- **PRCF:** Reed Park Playground Improvements
- **PRCF:** Non-Playable Turf Conversions
- **Transportation:** Gateway Library Pedestrian Hybrid Beacon
- **Transportation:** Sossaman Road: Ray Rd to Warner Rd
- **Transportation:** Eastern Canal SUP & Signals - Brown to Broadway
- **Transportation:** L202 Red Mountain SUP - Power Rd. past Thomas Rd.



Reed Park Playground



Gateway Library Pedestrian Hybrid Beacon

Current Non-Utility CIP Projects

- **Arts & Culture:** idea Museum Renovation Phase 2
- **DoIT:** Citywide Fiber Phase 2
- **Fire:** Fire Station 224
- **Fire:** Fire Station 205 (Rebuild)
- **Fire:** Fire Fuel Station Tanks
- **Police:** PD Headquarters
- **Falcon Field:** Design RWY 22L Holding Bay and Future Taxiway
- **Falcon Field:** Design Reconstruct West Airport Perimeter Road
- **Falcon Field:** Design Eastside Dual Taxi Lane Phase 2
- **PRCF:** Signal Butte Park Phase 2
- **PRCF:** The Courts at Eastmark
- **PRCF:** Cemetery SRP Canal Relocation
- **PRCF:** Eastmark Aquatic Complex (Design)
- **PRCF:** Red Mountain Aquatic Complex (Design)
- **Transportation:** Broadway Road - Mesa Dr to Stapley
- **Transportation:** Val Vista Dr - Pueblo to US 60
- **Transportation:** Ellsworth Road Widening
- **Transportation:** Ray Road Connection at Ellsworth

PD Headquarters



Fire Station 224

Non-Utility Projects To Begin Construction in FY 26/27

- **Arts & Culture:** MAC Lighting System Replacement Phase 1
- **Fire:** Fire Station 223
- **Fire:** Fire Station Restroom Remodels
- **Falcon Field:** Construct: Future Taxiway H (Anzio) (Phase 1 of 2)
- **Falcon Field:** Design & Construct: Anzio Ramp Reconstruction Phase 2
- **Falcon Field:** Construct: Reconstruct Portions of West Airport Perimeter Road
- **Transportation:** Southern Avenue & Country Club Drive Roadway Improvements
- **Transportation:** Eastern Canal - Brown to Broadway - Pathways
- **Transportation:** Warner Rd Widening - Mountain to Meridian (S Side)
- **Transportation:** Elliot Road - East Maricopa Floodway to Ellsworth
- **PRCF:** Multiple Dog Park Renovations
- **PRCF:** Multiple Park Playground Improvements
- **PRCF:** Water Conservation Projects



Fire Station 223

Future Non-Utility Projects Needed

- **Arts & Culture:** MAC Lighting Replacement Future Phases
- **Arts & Culture:** Arizona Natural History Museum Renovations
- **Facilities Management:** City Owned Parking Lots
- **Fire:** Fire Administration Building
- **Library:** Dobson Ranch Renovations
- **Library:** Book Locker Expansions
- **Library:** Main Library North Lawn Redevelopment
- **Police:** Substation Remodels
- **PRCF:** Cemetery Operations Building
- **PRCF:** Cemetery SW Expansion
- **PRCF:** New Park at Mountain & Adobe
- **PRCF:** Mesa Convention Center Upgrades
- **PRCF:** Amphitheater Upgrades
- **PRCF:** Dobson Ranch Lake 6 Rehab
- **PRCF & Facilities Management:** Deferred Maintenance



Convention Center Lobby (concept)

Non-Utility Lifecycle Projects

- Computer Cycle Replacement
- Software Maintenance and IT Infrastructure
- Vehicle Replacements
- Police & Fire Radio Upgrade & Replacements
- Police Technical Services Replacements
- Police Equipment Replacements
- Police Bomb Robot
- Fire Apparatus Replacements
- Fire Equipment Replacements
- Pavement Maintenance
- MAC Equipment Replacements
- Aging City Facilities Infrastructure
- Transportation End-of-Life Infrastructure Replacements





mesa·az