



Design Review Board



DRB24-00790

Downtown Façade

121-123 W Main

Emily Johnson, Planner I

October 8, 2024



Request

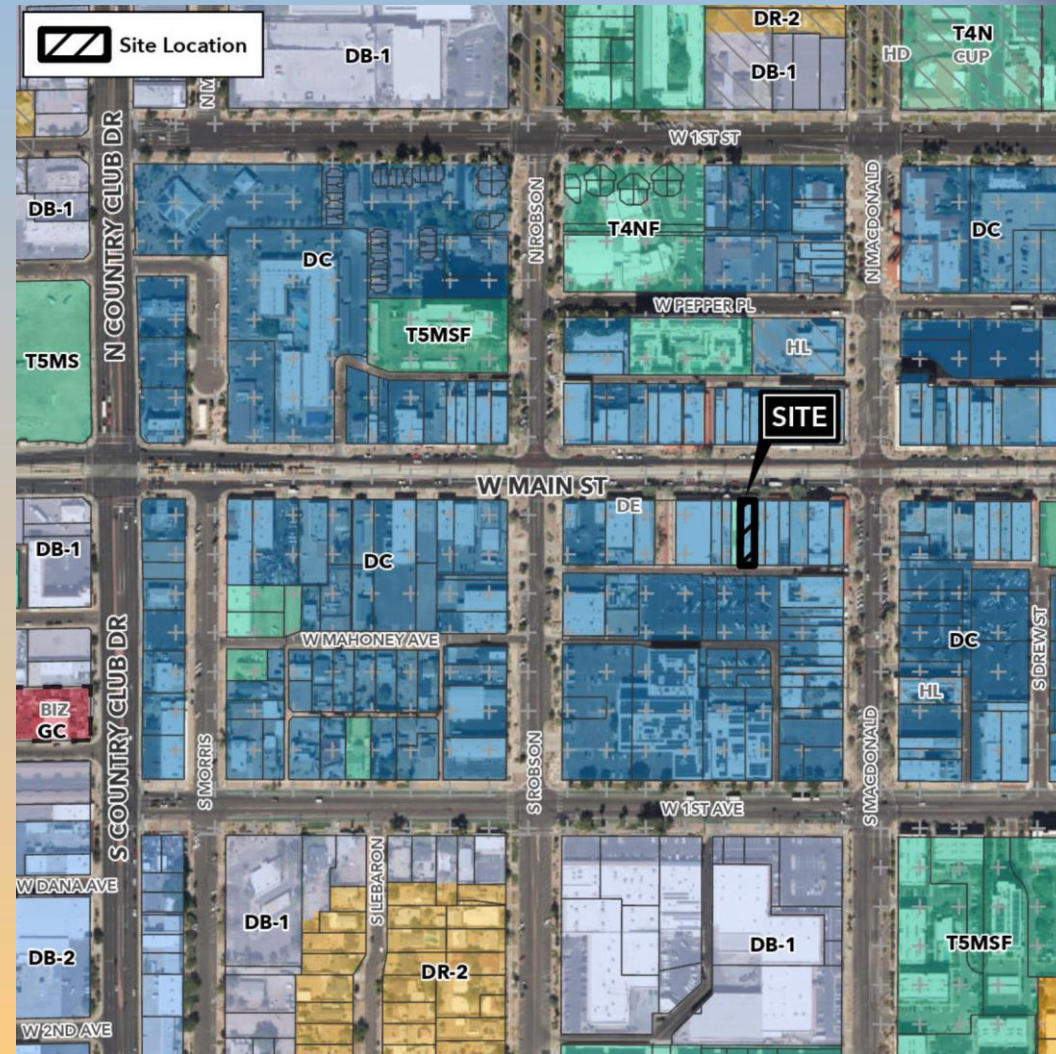
- Design Review
- Downtown façade improvement to existing storefront





Location

- South side of Main Street
- West of Center Street
- East of Country Club Drive





Site Photo

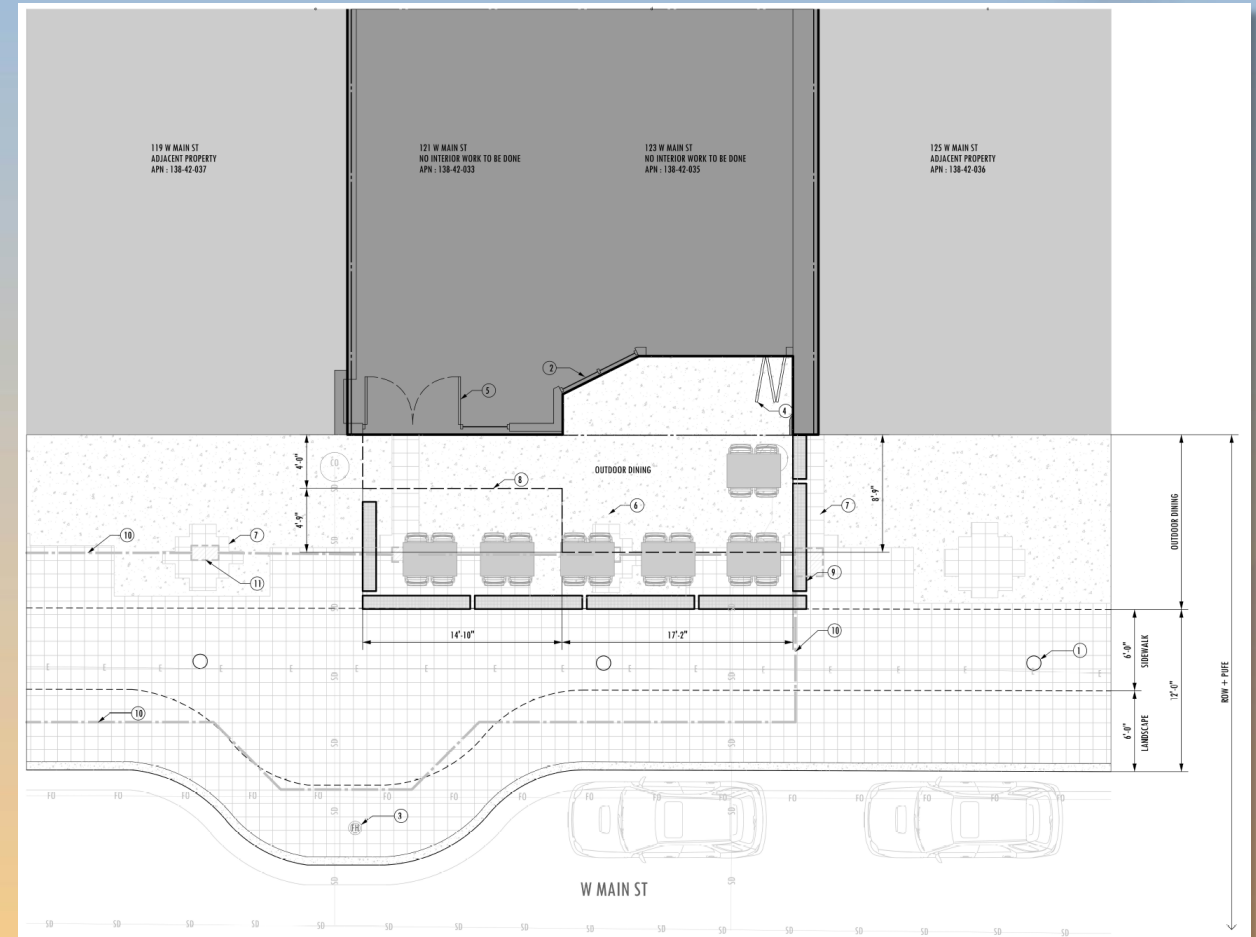


Looking south from Main Street



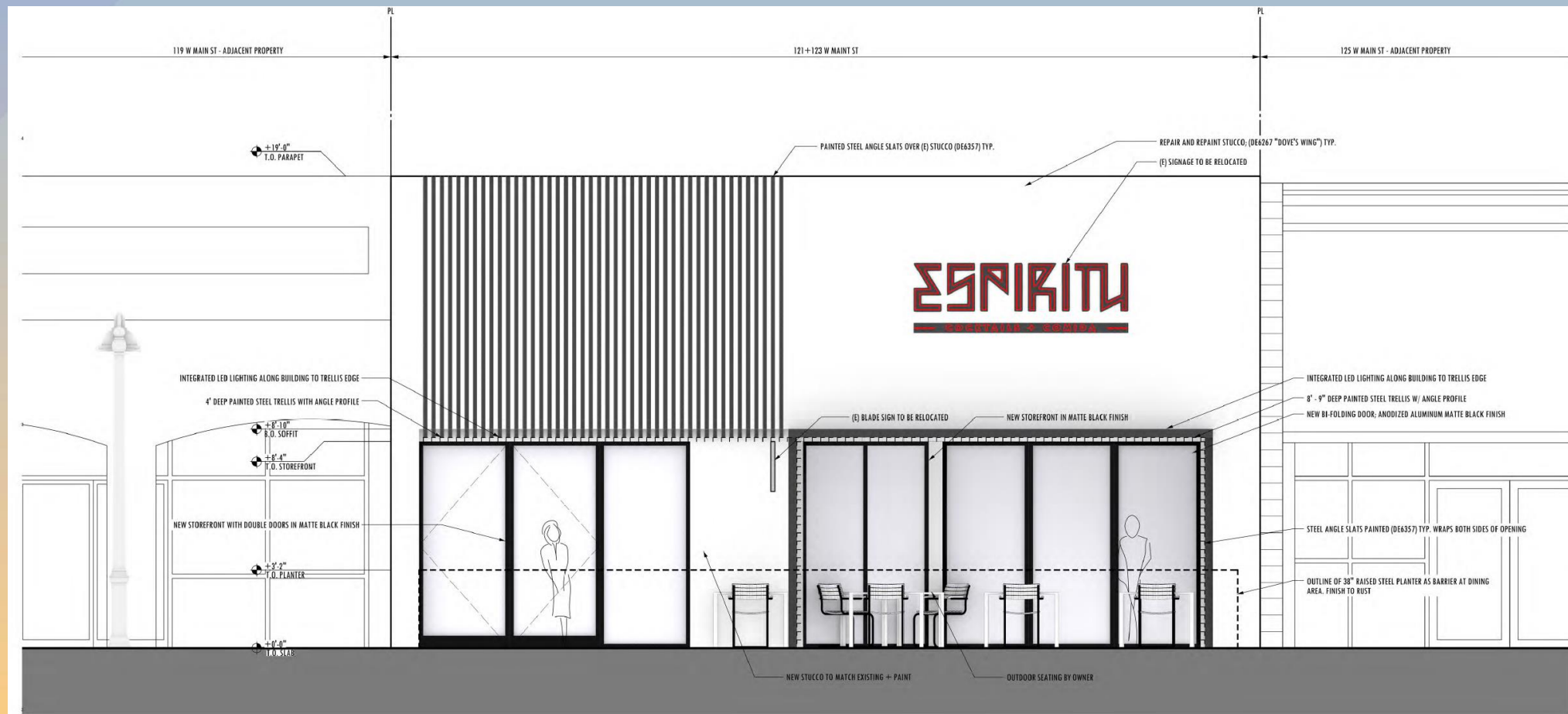
Site Plan

- No changes to building footprint
- Remove existing colonnade
- 121 W Main – New door location; 4' deep steel trellis
- 123 W Main – New bi-folding door; 8'-9" deep steel trellis





Elevations



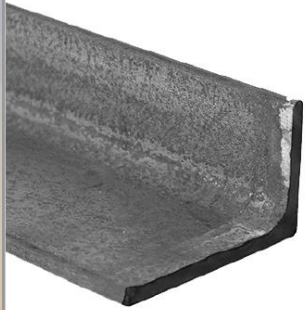


Elevations





Material Board



TRELLIS PROFILE

BLACK ANODIZED

- STOREFRONT

BLACK TIE (DE6357)

- STEEL TRELLIS
- STEEL STRUCTURAL MEMBERS

DOVE'S WING (DE6267)

- ALL STUCCO

FINISH TO RUST STEEL

- STEEL PLANTERS



Findings

Staff is seeking your review and recommendation on the following:

- ✓ Proposed façade improvement

Staff welcomes any feedback



Design Review Board



Historic Photos





Context Photos





Context Photos



Status

- Future
- Current
- Reviewed

