



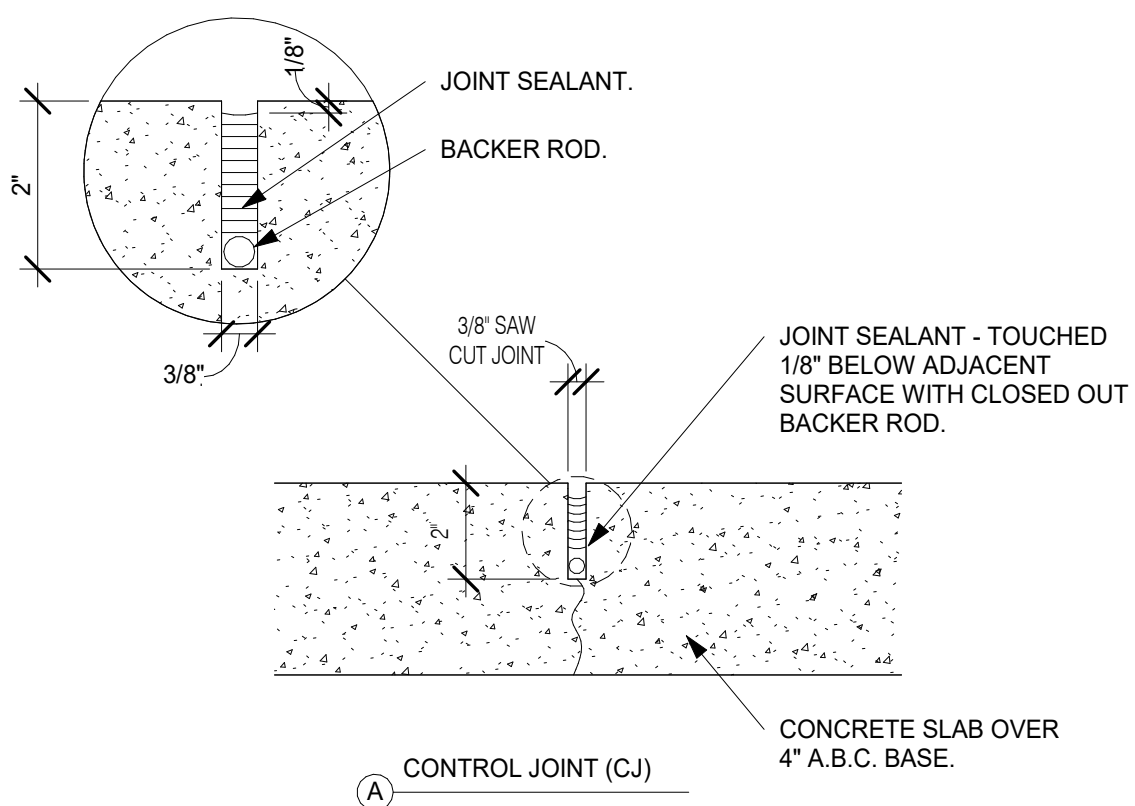
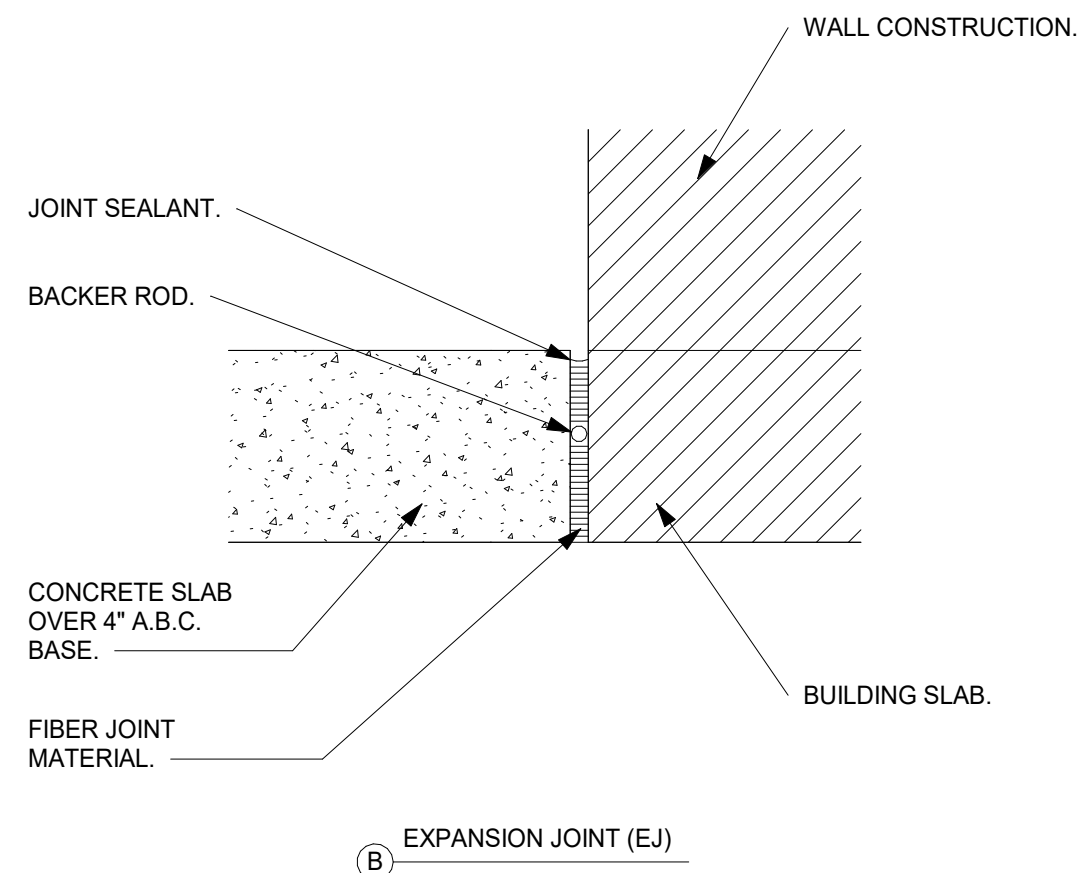
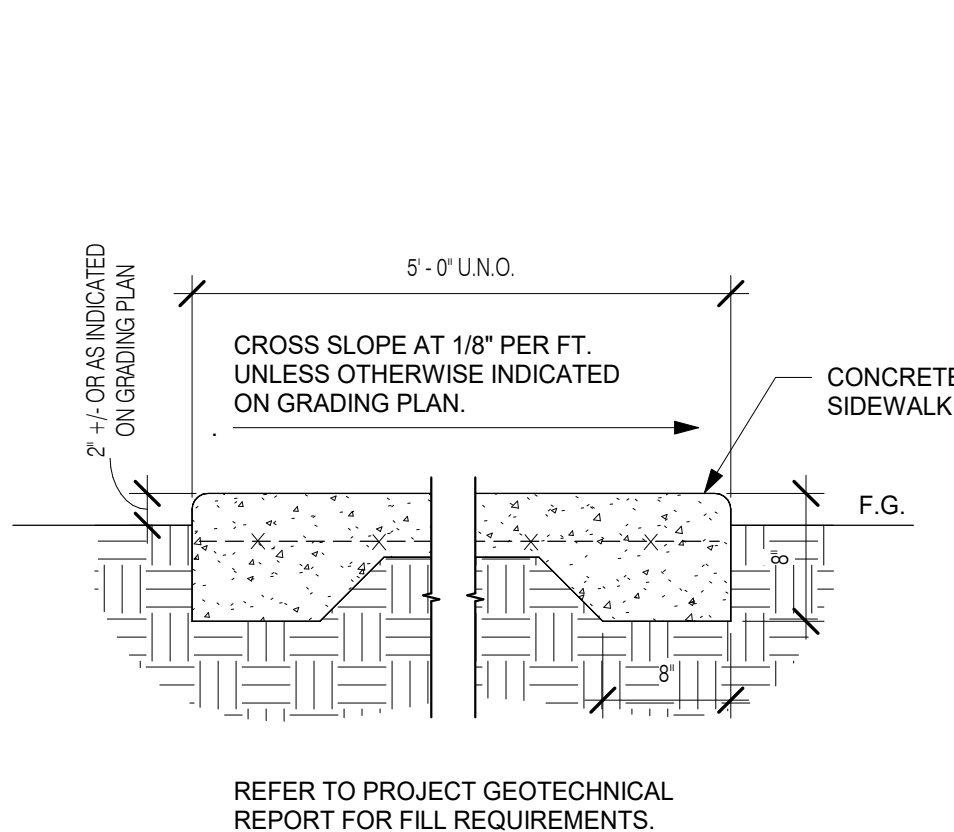
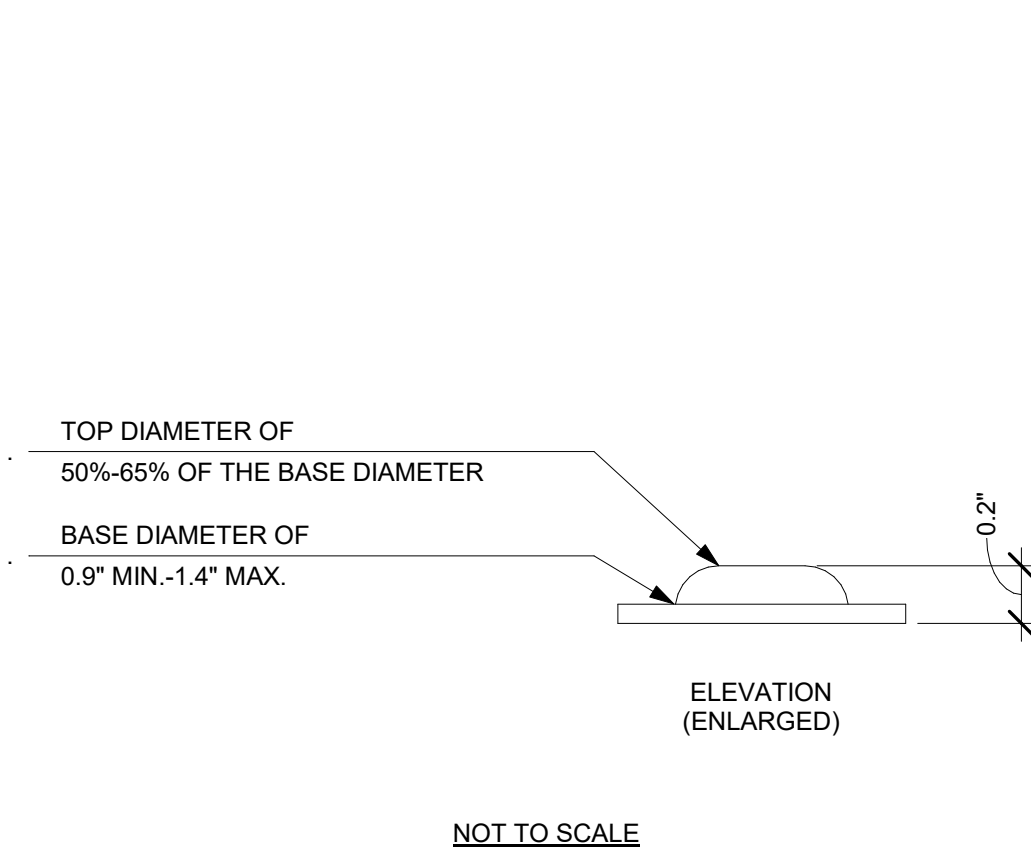
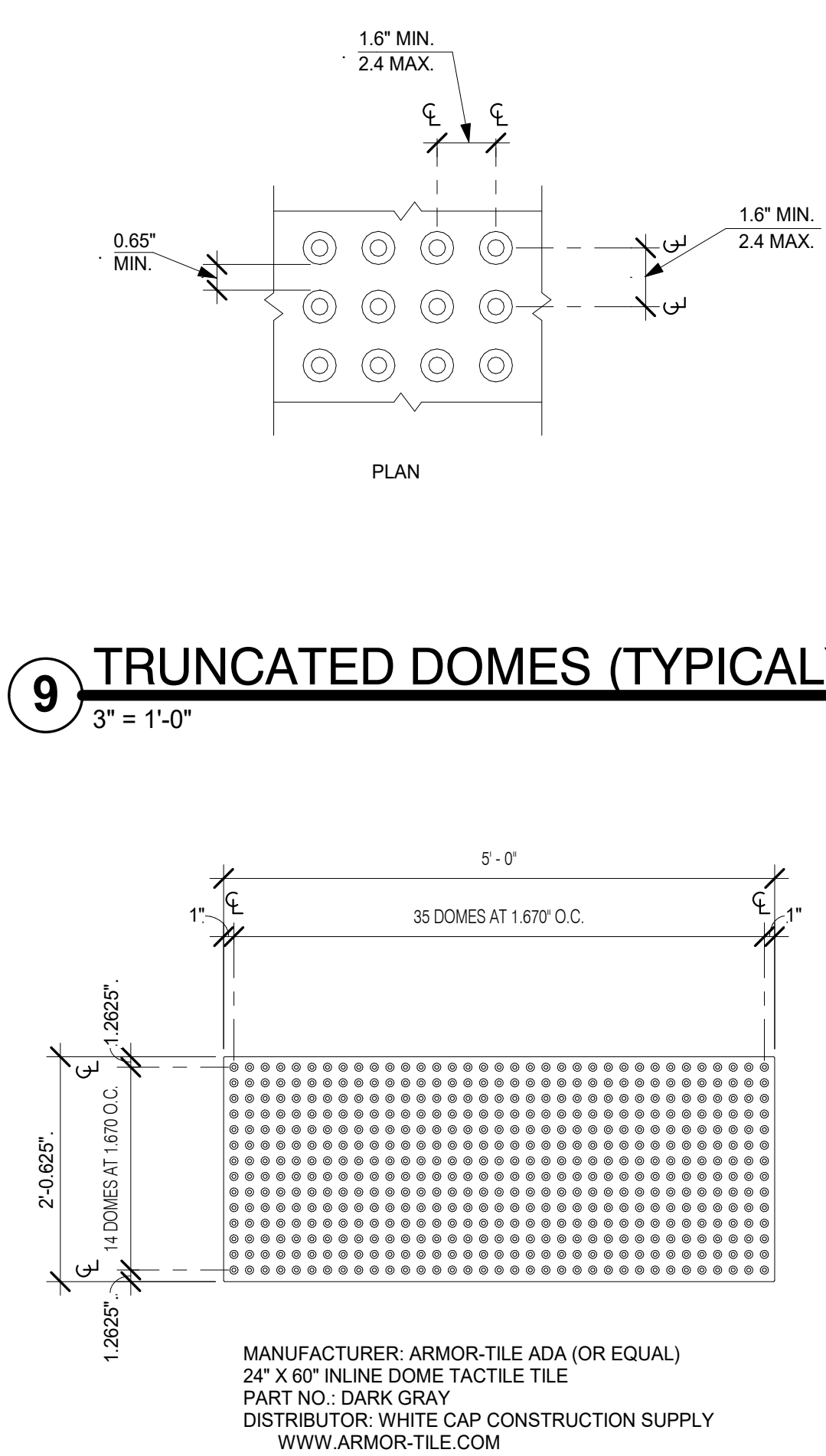


Technical drawing of a screen assembly showing dimensions and components:

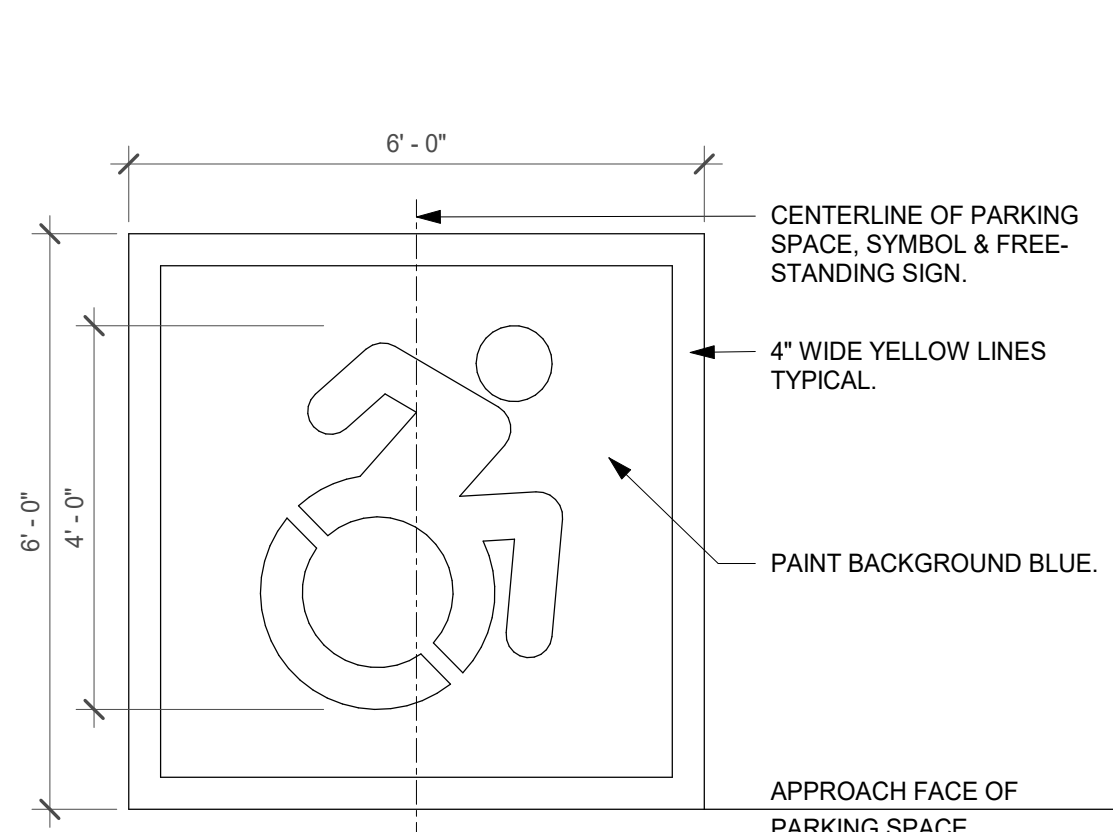
- Dimensions:**
  - Overall width: 4' - 11 5/8"
  - Overall height: 3' - 6"
  - Height of screen area: 3' - 4"
  - Height of bottom rail: 2"
  - Height of top rail: 2"
  - Height of posts: 2"
  - Height of square pickets: 3/4"
  - Height of stacked screen condition: 2"
  - Height of stack and above: 1 1/4"
  - Max. opening: 3 3/4"
- Components:**
  - 2" X 1" TOP AND BOTTOM RAILS
  - 2" X 2" POSTS
  - 3/4" X 3/4" SQUARE CURVED PICKETS, CENTERED ON RAILS AND POSTS
- Notes:**
  - TYPICAL PATTERN LENGTH
  - R 3' - 6"
  - STD. INSIDE RAD
  - OMIT FEET AT STACKED SCREEN CONDITION, 2ND STACK AND ABOVE

$$1/2'' = 1'-0''$$
$$1/4" = 1'-0"$$

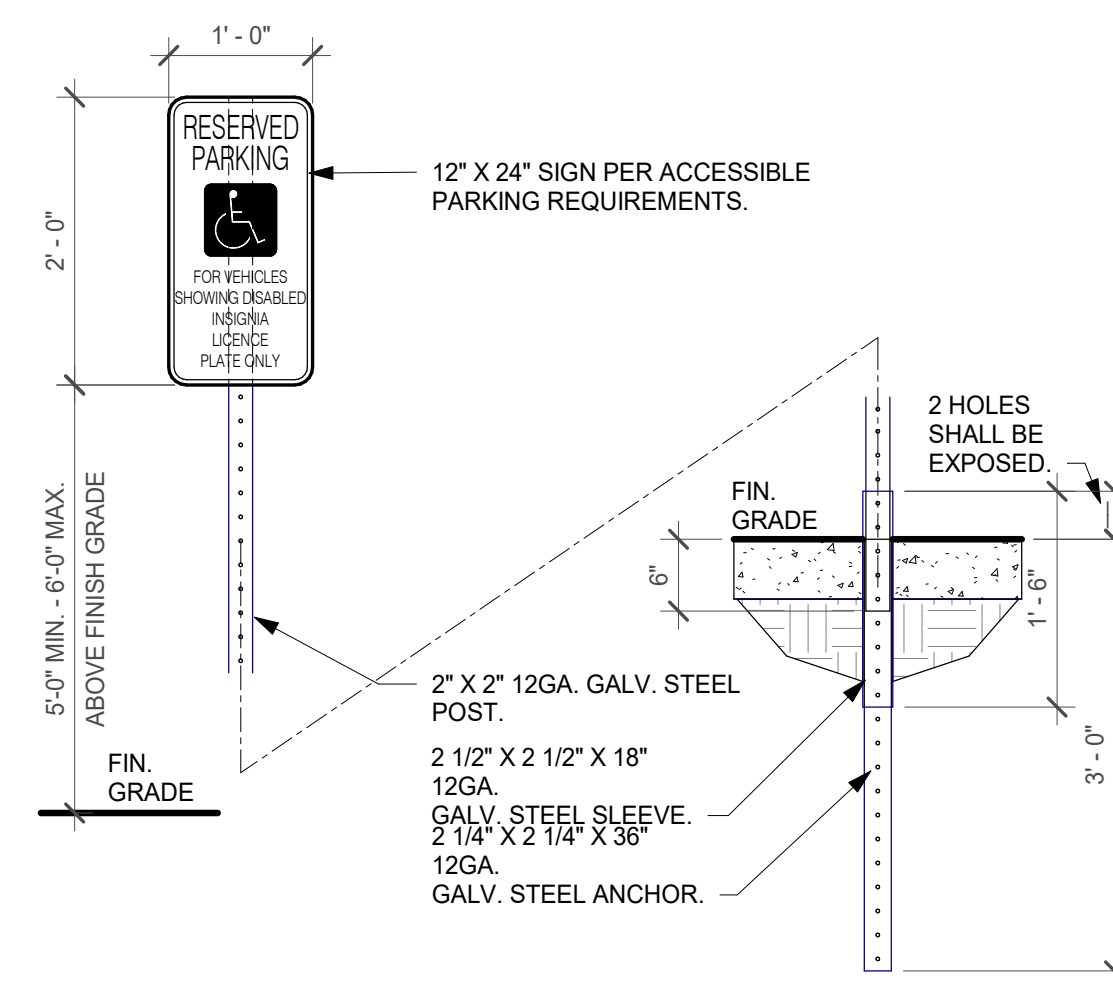
4/21/2025 4:21:20 PM

$$1/2'' = 1'-0''$$

$$3'' = 1'-0''$$

$$1'' = 1'-0''$$

$$12'' = 1'-0''$$


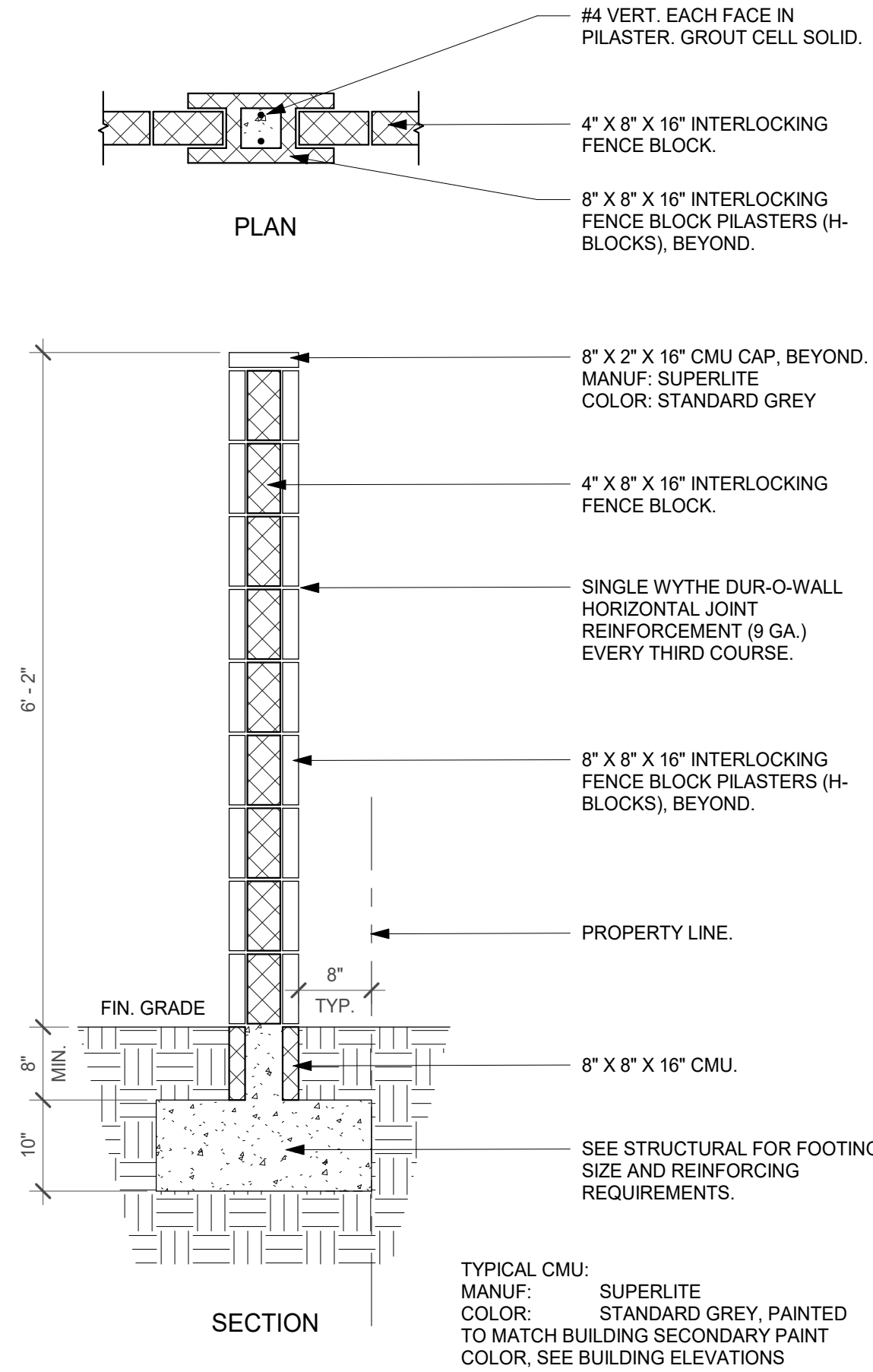
3/4" = 1'-0"



1/2" = 1'-0"



3/4" = 1'-0"



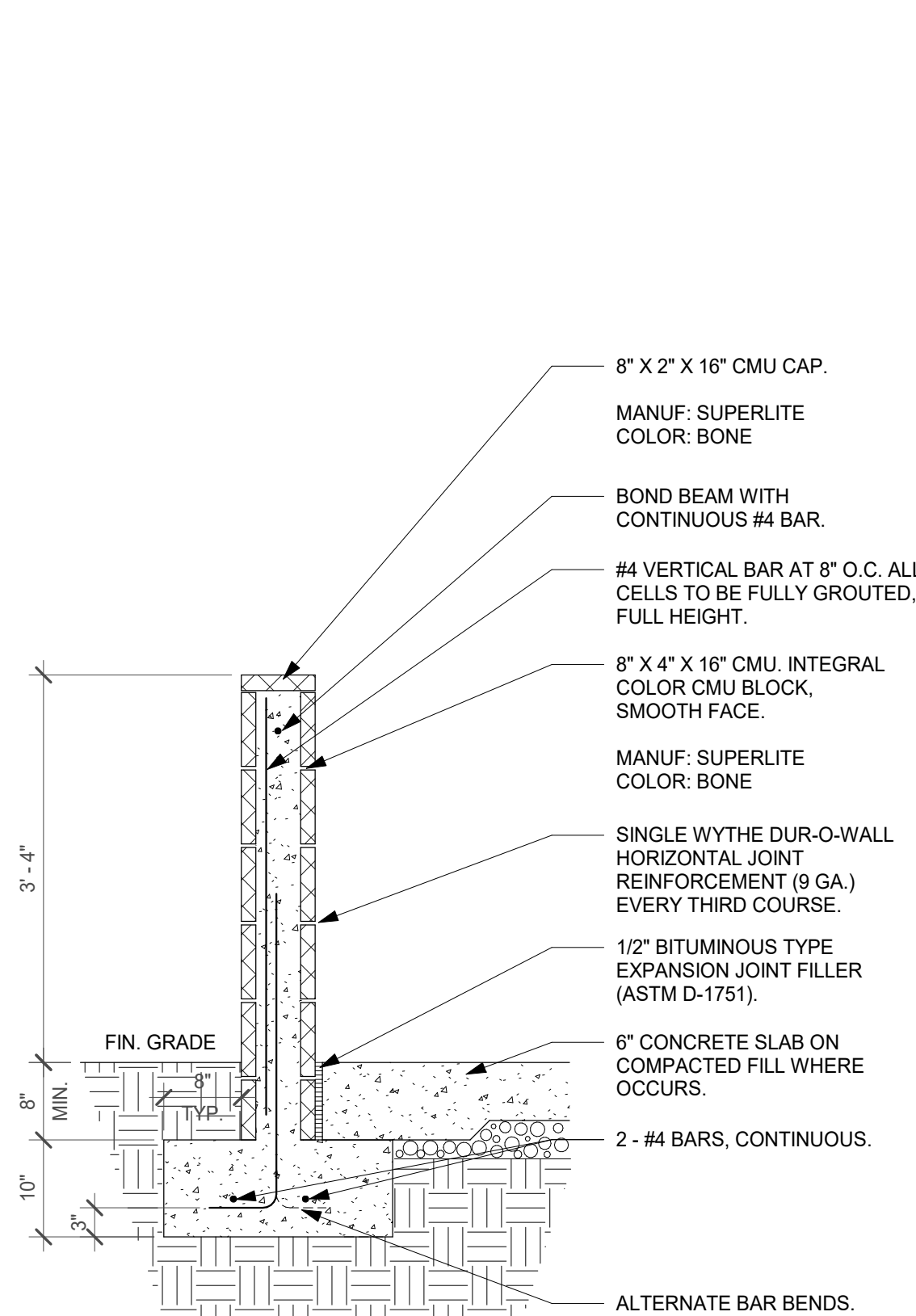
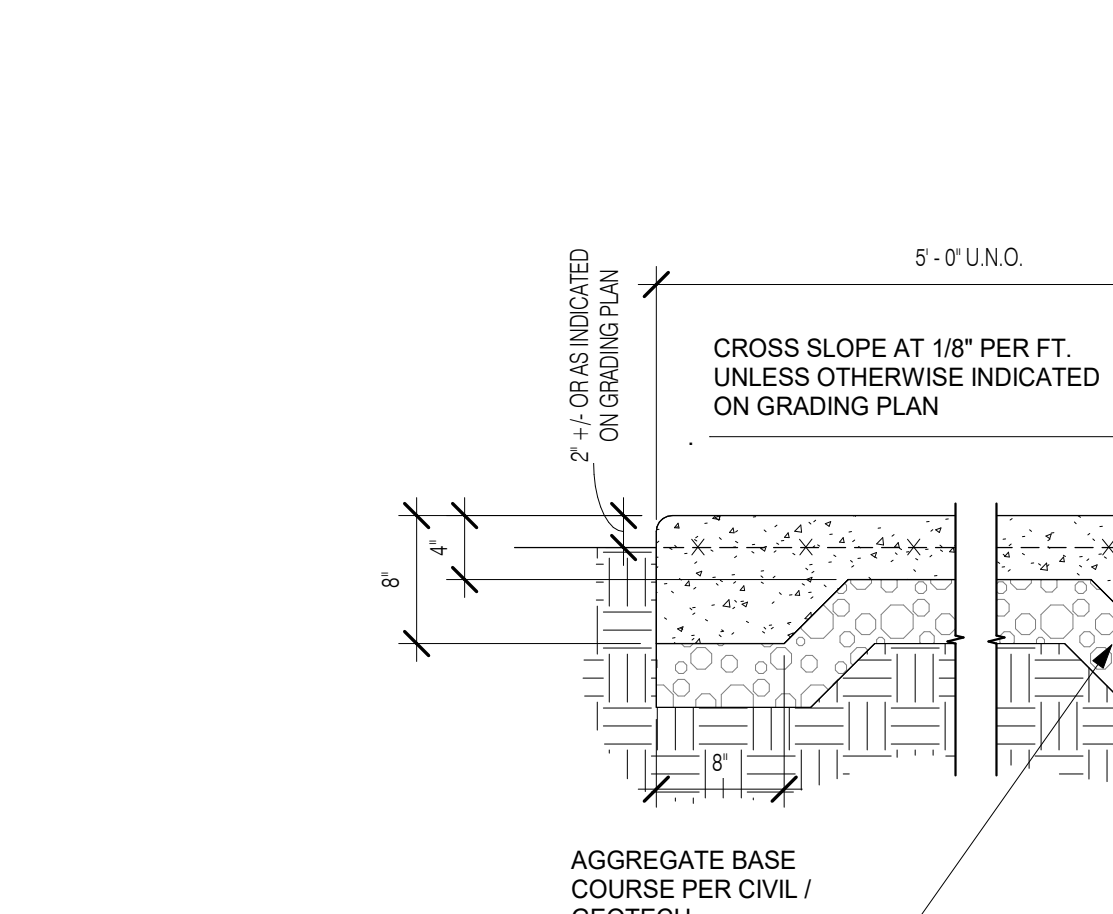
3/4" = 1'-0"

The drawing consists of two views: a side section and a top elevation.

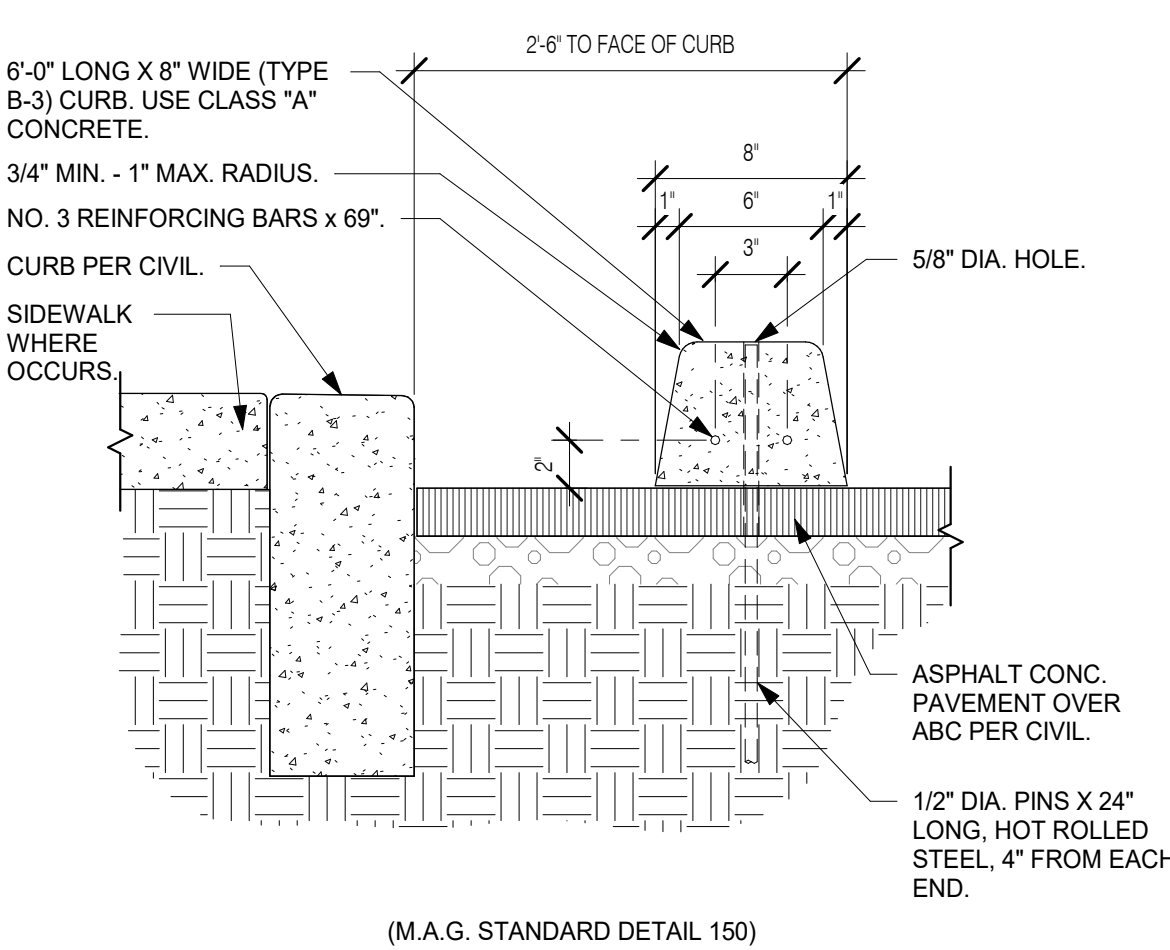
**SECTION:** This view shows a vertical cross-section of the manhole. It features a vertical pipe with a height dimension of  $2'-8\frac{1}{2}"$ . The pipe is labeled as "2" SCH. 40 STEEL PIPE (2 3/8" O.D.)". At the base of the pipe, there is a circular anchor plate labeled "6"Ø x 3/8" THICK STEEL ANCHOR PLATE W/ (3) 9/16"Ø HOLES.". The base is shown as a cross-section of the ground.

**ELEVATION:** This view shows the top of the manhole. It is a circular structure with an overall diameter dimension of  $3'-4\frac{3}{4}"$ . The anchor plate is visible as a circular feature at the bottom of the structure, with a diameter dimension of  $2'-6\frac{3}{8}"$ . The base is also shown as a cross-section of the ground.

3/4" = 1'-0"



3/4" = 1'-0"



1 1/2" = 1'-0"

