

**site data (new pad a)**

EXISTING ZONING: LC - LIMITED COMMERCIAL  
 NET SITE AREA: 0.282 ACRES (12,274 S.F.)  
 BUILDING AREA:  
 PAD A (NEW): 1,265 S.F.  
 LOT COVERAGE: 7,133 S.F. = 58.1%  
 TOTAL PARKING REQUIRED: 14 SPACES  
 EATING ESTABLISHMENTS  
 INDOOR AREA: 1,265 S.F. @ 1/100 S.F. = 13 SPACES  
 PATIO 200 S.F. @ 1/200 S.F. = 1 SPACE  
 TOTAL PARKING PROVIDED: 14 SPACES\*  
 (10.0/1000)  
 ACCESSIBLE SPACES REQUIRED: 1 SPACE  
 ACCESSIBLE SPACES PROVIDED: 1 SPACE  
 \*SHARED PARKING WITH SHOPPING CENTER

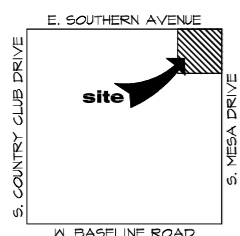
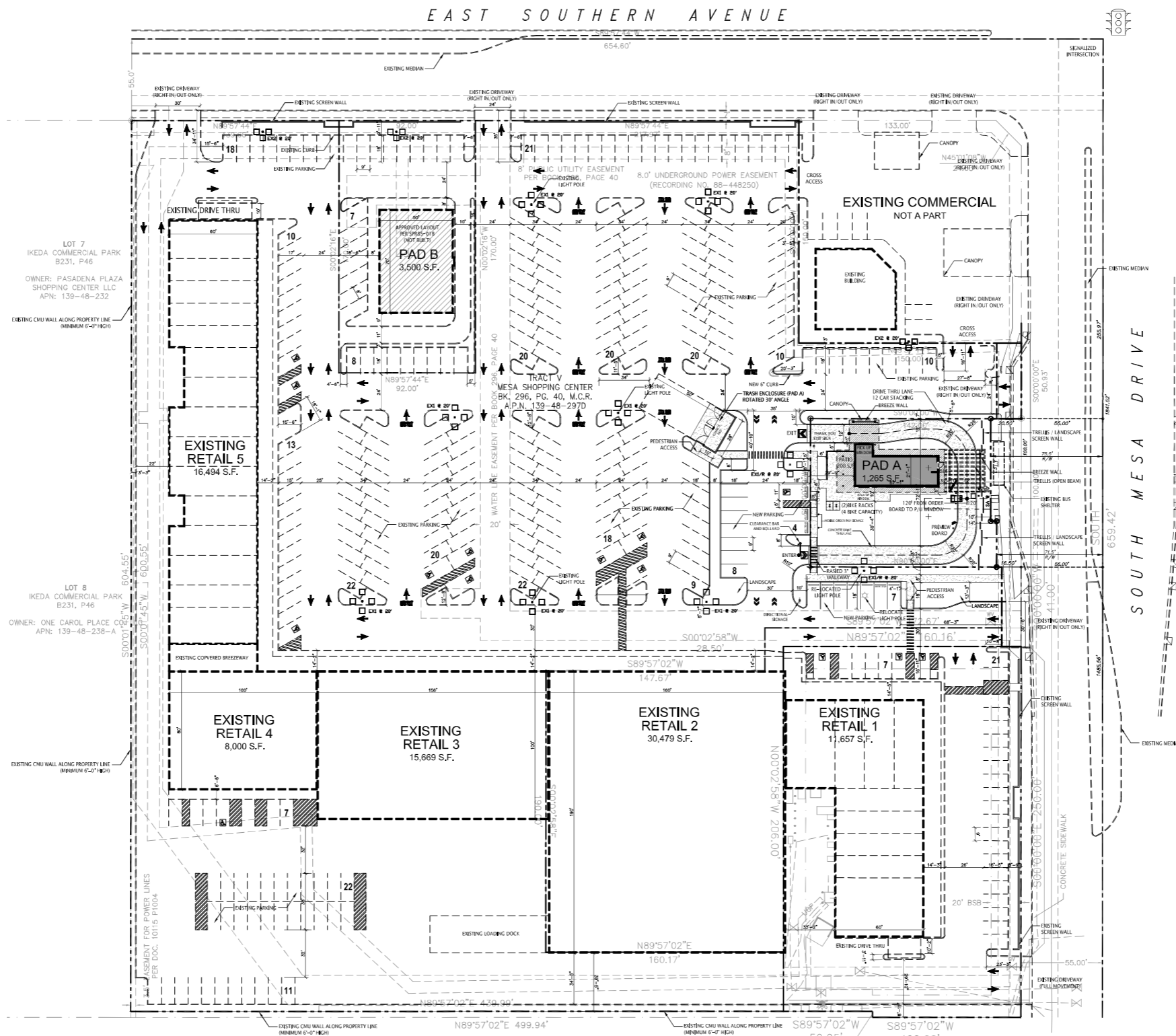
**project directory**

PROPERTY OWNER:  
 RED MOUNTAIN ASSET FUND II, LLC  
 1234 EAST 17TH STREET  
 SANTA ANA, CALIFORNIA 92701  
 CONTACT: JOHN CLAY  
 PHONE: (714) 460-1524  
 E-MAIL: jclay@rmmginc.com

PROPERTY OWNER REPRESENTATIVE:  
 KERPAN PLANNING AND DESIGN, LLC  
 4777 S. FULTON RANCH BLVD. UNIT 2138  
 CHANDLER, ARIZONA 85248  
 CONTACT: KEVIN D. KERPAN  
 PHONE: (602) 329-0192  
 E-MAIL: kevin@kerpanplanningdesign.com

**site data (overall center)**

EXISTING ZONING: LC - LIMITED COMMERCIAL  
 NET SITE AREA: 7.808 ACRES (340,117 S.F.)  
 BUILDING AREA:  
 RETAIL 1 (EXISTING): 11,657 S.F.  
 RETAIL 2 (EXISTING): 30,479 S.F.  
 RETAIL 3 (EXISTING): 15,669 S.F.  
 RETAIL 4 (EXISTING): 8,000 S.F.  
 RETAIL 5 (EXISTING): 16,494 S.F.  
 PAD A (NEW): 1,265 S.F.  
 PAD B (FUTURE): 3,500 S.F.  
 TOTAL BUILDING AREA: 87,064 S.F.  
 LOT COVERAGE: 313,486 S.F. = 92.2%  
 TOTAL PARKING REQUIRED: 291 SPACES  
 RETAIL 1, 3, 4, 5 (43,820 S.F.):  
 GROUP COMMERCIAL BUILDINGS @ 1/275 S.F.  
 43,820 @ 1/275 S.F. = 160 SPACES  
 RETAIL 2 (30,479 S.F.):  
 GROUP COMMERCIAL BUILDINGS @ 1/375 S.F.  
 30,479 @ 1/375 S.F. = 82 SPACES  
 PAD A (1,265 S.F.):  
 EATING ESTABLISHMENTS  
 INDOOR AREA: 1,265 S.F. @ 1/100 S.F. = 13 SPACES  
 PATIO 200 S.F. @ 1/200 S.F. = 1 SPACE  
 PAD B (3,500 S.F.):  
 EATING ESTABLISHMENTS  
 INDOOR AREA: 3,500 S.F. @ 1/100 S.F. = 35 SPACES  
 TOTAL PARKING PROVIDED: 335 SPACES  
 (4 SPACES / 1000)  
 ACCESSIBLE SPACES REQUIRED: 8 SPACES  
 ACCESSIBLE SPACES PROVIDED: 16 SPACES



**vicinity map**  
 scale: n.t.s.

NOTE: THIS SITE PLAN HAS BEEN PREPARED WITHOUT THE AID OF A SURVEY. ALL PROPERTY BOUNDARIES ARE ROUGH APPROXIMATIONS. THIS DRAWING IS TO BE USED FOR CONCEPTUAL PURPOSES ONLY AND IT IS NOT TO BE THE BASIS FOR ANY LEGALLY BINDING DOCUMENTATION.

**FINAL**  
**ZON23-00935**

**site plan**

scale: 1" = 40'-0"



**Kerpan**  
 planning and design  
 4777 S. Fulton Ranch Blvd.  
 Unit 2138  
 Chandler, Arizona 85248  
 Phone: (602) 329-0192

**Plaza Mesa Shopping Center: New PAD A**  
 1230 S. Mesa Drive  
 Mesa, Arizona 85210

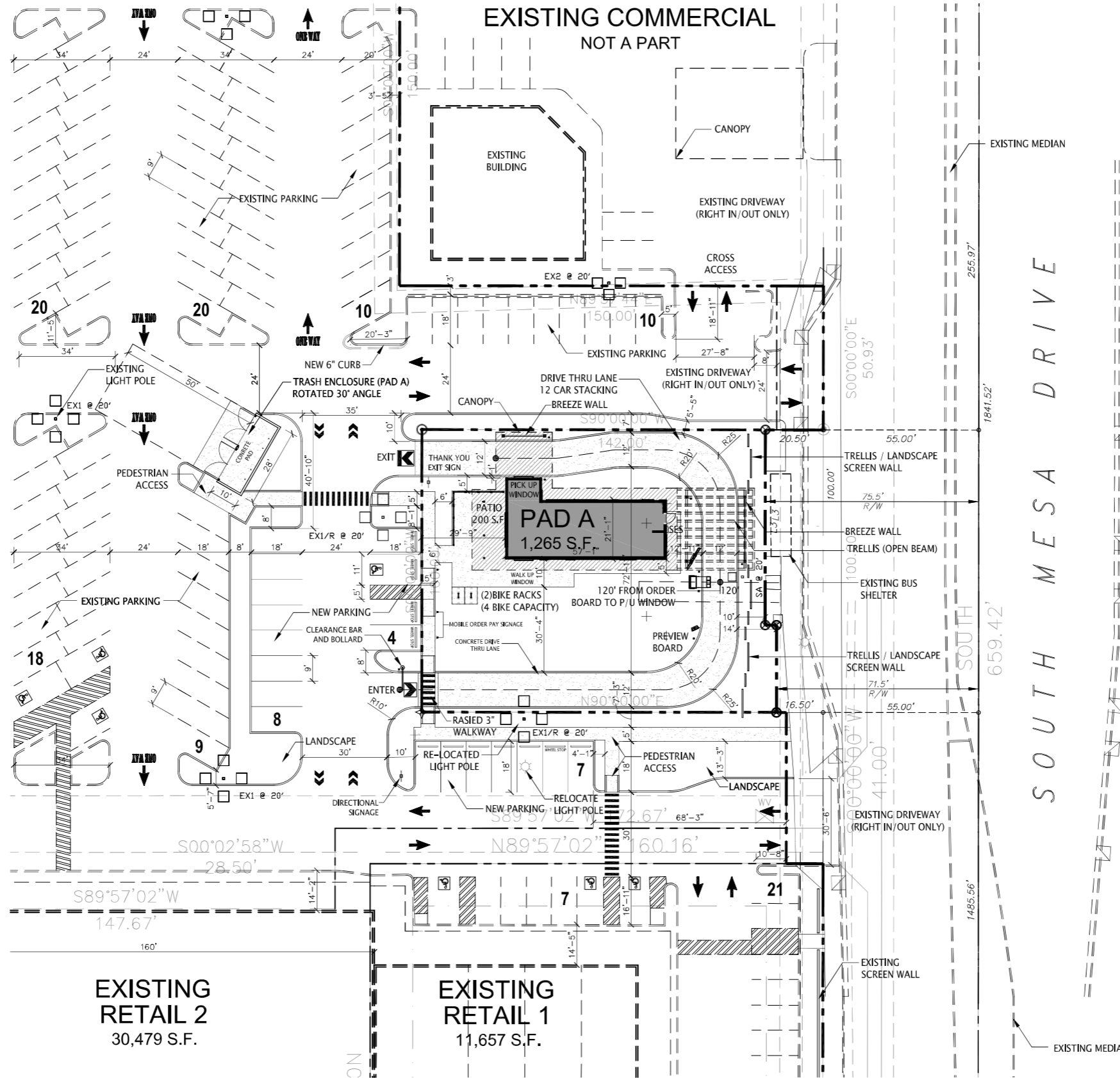
PRELIMINARY  
 NOT FOR  
 CONSTRUCTION OR RECORDING

**Red Mountain Group**  
 Project number: 22038  
 Date: September 9, 2024

**MP-1**

**site data (new pad a)**

EXISTING ZONING: LC - LIMITED COMMERCIAL  
 NET SITE AREA: 0.282 ACRES (12,274 S.F.)  
 BUILDING AREA:  
 PAD A (NEW): 1,265 S.F.  
 LOT COVERAGE: 7,133 S.F. = 58.1%  
 TOTAL PARKING REQUIRED: 14 SPACES  
 EATING ESTABLISHMENTS  
 INDOOR AREA: 1,265 S.F. @ 1/100 S.F. = 13 SPACES  
 PATIO 200 S.F. @ 1/200 S.F. = 1 SPACE  
 TOTAL PARKING PROVIDED: 14 SPACES\*  
 (10.0/1000)  
 ACCESSIBLE SPACES REQUIRED: 1 SPACE  
 ACCESSIBLE SPACES PROVIDED: 1 SPACE  
 \*SHARED PARKING WITH SHOPPING CENTER

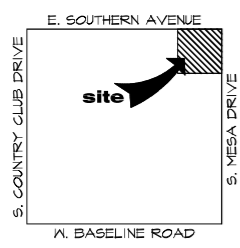


**project directory**

PROPERTY OWNER:  
 RED MOUNTAIN ASSET FUND II, LLC  
 1234 EAST 17TH STREET  
 SANTA ANA, CALIFORNIA 92701  
 CONTACT: JOHN CLAY  
 PHONE: (714) 460-1524  
 E-MAIL: jclay@rmrginc.com  
 PROPERTY OWNER REPRESENTATIVE:  
 KERPAN PLANNING AND DESIGN, LLC  
 4777 S. FULTON RANCH BLVD. UNIT 2138  
 CHANDLER, ARIZONA 85248  
 CONTACT: KEVIN D. KERPAN  
 PHONE: (602) 329-0192  
 E-MAIL: kevin@kerpanplanningdesign.com

**site data (overall center)**

EXISTING ZONING: LC - LIMITED COMMERCIAL  
 NET SITE AREA: 7.808 ACRES (340,117 S.F.)  
 BUILDING AREA:  
 RETAIL 1 (EXISTING): 11,657 S.F.  
 RETAIL 2 (EXISTING): 30,479 S.F.  
 RETAIL 3 (EXISTING): 15,669 S.F.  
 RETAIL 4 (EXISTING): 8,000 S.F.  
 RETAIL 5 (EXISTING): 16,494 S.F.  
 PAD A (NEW): 1,265 S.F.  
 PAD B (FUTURE): 3,500 S.F.  
 TOTAL BUILDING AREA: 87,064 S.F.  
 LOT COVERAGE: 313,486 S.F. = 92.2%  
 TOTAL PARKING REQUIRED: 291 SPACES  
 RETAIL 1, 3, 4, 5 (43,820 S.F.):  
 GROUP COMMERCIAL BUILDINGS @ 1/275 S.F.  
 43,820 @ 1/275 S.F. = 160 SPACES  
 RETAIL 2 (30,479 S.F.):  
 GROUP COMMERCIAL BUILDINGS @ 1/375 S.F.  
 30,479 @ 1/375 S.F. = 82 SPACES  
 PAD A (1,265 S.F.):  
 EATING ESTABLISHMENTS  
 INDOOR AREA: 1,265 S.F. @ 1/100 S.F. = 13 SPACES  
 PATIO 200 S.F. @ 1/200 S.F. = 1 SPACE  
 PAD B (3,500 S.F.):  
 EATING ESTABLISHMENTS  
 INDOOR AREA: 3,500 S.F. @ 1/100 S.F. = 35 SPACES  
 TOTAL PARKING PROVIDED: 335 SPACES  
 (4 SPACES / 1000)  
 ACCESSIBLE SPACES REQUIRED: 8 SPACES  
 ACCESSIBLE SPACES PROVIDED: 16 SPACES



vicinity map  
 scale: n.t.s.

NOTE: THIS SITE PLAN HAS BEEN PREPARED WITHOUT THE AID OF A SURVEY. ALL PROPERTY BOUNDARIES ARE ROUGH APPROXIMATIONS. THIS DRAWING IS TO BE USED FOR CONCEPTUAL PURPOSES ONLY AND IT IS NOT TO BE THE BASIS FOR ANY LEGALLY BINDING DOCUMENTATION.

FINAL  
 ZON23-00935

**site plan**

scale: 1" = 20'-0"  
 0 20' 40' 60'



**Kerpan**  
 planning and design  
 4777 S. Fulton Ranch Blvd.  
 Unit 2138  
 Chandler, Arizona 85248  
 Phone: (602) 329-0192

**Plaza Mesa Shopping Center: New PAD A**  
 1230 S. Mesa Drive  
 Mesa, Arizona 85210

PRELIMINARY  
 NOT FOR  
 CONSTRUCTION OR RECORDING

Red Mountain Group

Project number: 22038

Date: September 9, 2024

**SP-1**