

**SPECIAL USE PERMIT (SUP) FOR
A COMPREHENSIVE SIGN PLAN (CSP) NARRATIVE**

AT Still University – 5924 E Baseline Road

REPRESENTATIVE:
INNERFACE Architectural
Signage, Inc
5849 Peachtree Road
Atlanta, GA 30341

APPLICANT:
AT Still University
5924 E Baseline Road Mesa, AZ
85206

DESCRIPTION OF REQUEST

Proposing New Exterior Main Identification Ground Sign - AT Still University – 5924 E Baseline Road Mesa, AZ 85206

This is a request to modify an existing Comprehensive Sign Plan (CSP) for a medical use development located at the northwest corner of Recker Road and Baseline Road. The original CSP was approved in 2001 and includes three types of detached signs. A (Entre Development), B (Major Tenant) and C. AT Still University is requesting fabrication and installation of a new main id sign to replace the existing 7' -4' and 41' long type A sign (total square footage of approximately 300sqft). This type A sign will identify the main entry, at E. Baseline Road, to the medical use development. In addition to identifying the AT Still University Main Entrance this sign will also provide identification for the 2 secondary tenants: The Arizona School of Dentistry & Oral Health Clinic and Ross Farnsworth East Valley Family YMCA.

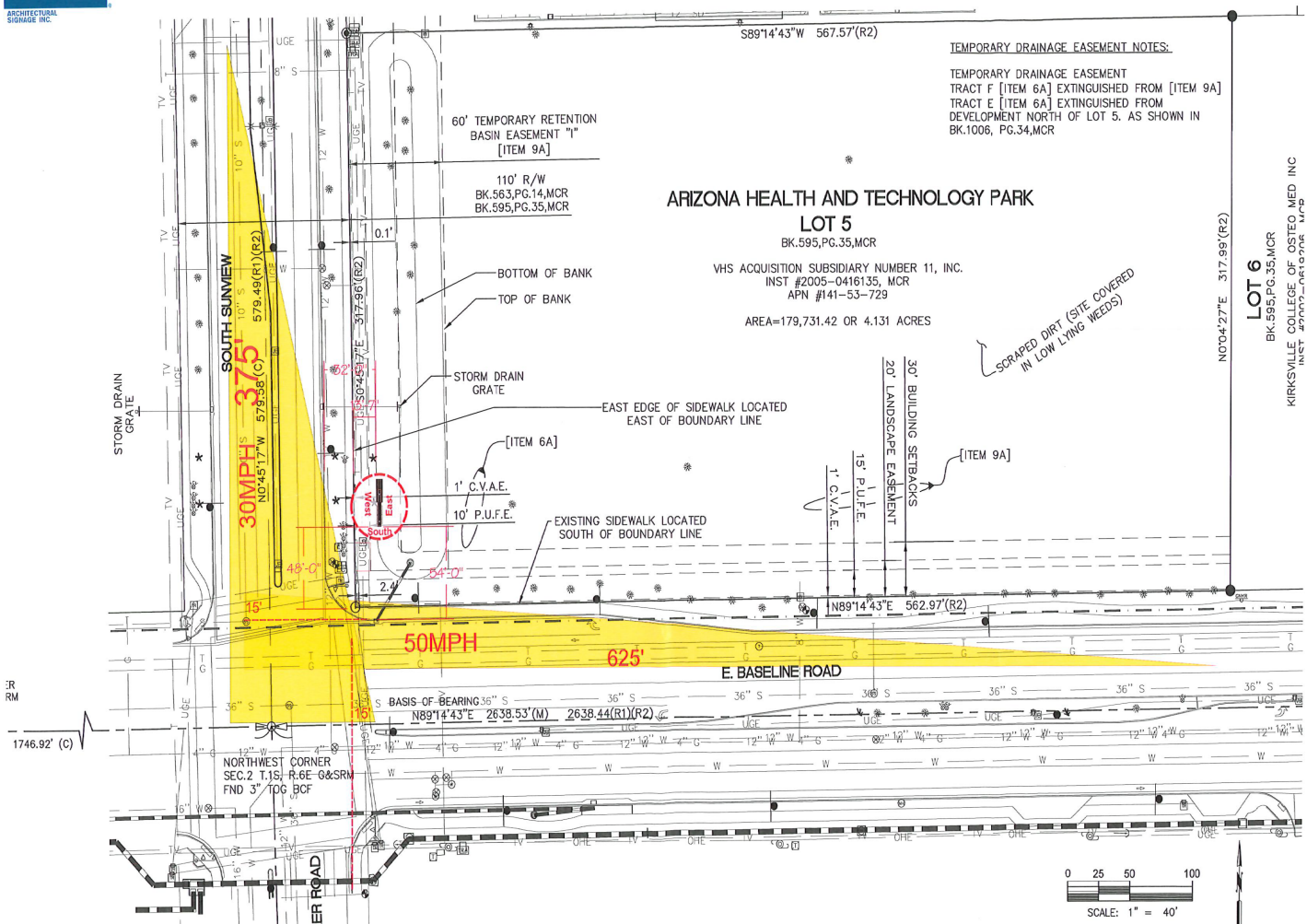
The existing multi-tenant sign (opposite corner Of South Sunview and E. Baseline Road), will be removed in advance of the new sign being installed.

In addition, the new sign will be located within the 15' required setback from street and/or sidewalk.

INNERFACE

ARCHITECTURAL
SIGNAGE INC.

5849 Peachtree Road • Atlanta, GA 30341 • 770-921-5565 • Fax 770-564-0362



HISTORY

A 50-acre parcel of land, located at Recker Road and Baseline Road, is the site for Arizona School of Health Sciences' (ASHS) new campus. The graduate institution offers advanced degrees in a variety of health professions. ASHS' signature facility, scheduled for completion in Fall 2001, is the centerpiece of the 89-acre Arizona Health and Technology Park.

The School has already begun to foster exciting alliances with local businesses and medical and information technology partners. Not only are they strengthening their educational mission, but are positioning themselves to provide a range of community resources.

ASHS is seeking tenants and partners for the Arizona Health and Technology Park to provide educational synergy in the areas of clinical experience, research, educational technology, healthcare technology, and student services will be attracted to the park. This university community is targeted to include a hospital(s), retirement village, clinical providers, research and clinical research entities, and housing. The campus community should aid in the recruitment of both faculty and students, build reputation, and attract resources, and enhance the learning process.

A division of the Kirksville College of Osteopathic Medicine (KCOM), the Arizona School of Health Sciences offers masters degree programs, doctoral degree programs and distance education programs in audiology, medical informatics, physical therapy, occupational therapy, sports health care and physician assistant studies.

PROPOSED SIGNAGE

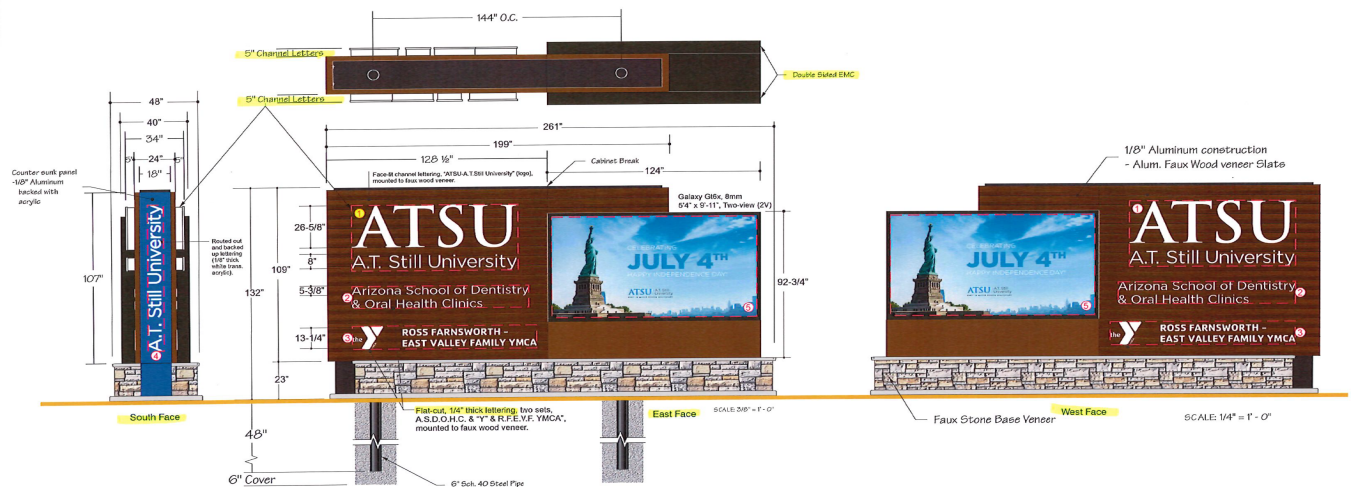
The new sign type A or Main ID sign that is being proposed has 208.66 Square Feet of copy on both sides combined. The new Sign Type A is aesthetically pleasing and adopts the look and feel of the surrounding area and structures. It will also have an Electronic Messaging Center (EMC), 5'-4" high x 9'-11" wide that will display graphic images and messaging to communicate important messages/updates / announcements to the public/ visitors.

Power: 120v
EMC: 26.41a MAX @ 120v each
Channel Letters: .43a @ 120v
Routed end: .25a @ 120v
Total Amps: 53.93a @ 120v

- ① 27.745 SqFt (x2)
- ② 9.919 SqFt (x2)
- ③ 10.814 SqFt (x2)
- ④ 5.95 SqFt (x1)
- ⑤ 52.88 SqFt (x2)

Total: 208.66 SqFt

*All construction material: 1/8" aluminum
1/8" acrylic for illumination copy
1/4" aluminum flat cut letters



R24322 - CONCEPT 1A

ATSU
A.T. Still University

INNERFACE
ARCHITECTURAL
SIGNAGE, INC.
5849 Peachtree Road | Atlanta, GA 30349
1.800.445.4796 | innerface.com

03.05.04 - rev. 6, HJG
03.12.04 - rev. 7, HJG
03.12.04 - rev. 8, HJG
10.21.04 - rev. 9, MRG
01.22.05 - rev. 10, MRG

03.06.05 - rev. 11, MRG
04.21.05 - rev. 12, MRG
04.23.05 - rev. 13, MRG

This drawing and the ideas expressed herein are the confidential property of INNERFACE. This drawing and its ideas are not to be reproduced, copied, or disclosed to any other person or entity without the express written consent of INNERFACE.

A.T. Still University
Designer: Heath J. Grappier
File Name: Concept

Additional product information regarding brightness displayed on the Daktronics Electronic Messaging Center: The current industry standard for measuring LED sign brightness in Foot candles comes from recommendations in the Lewin Light Report. This report developed a method for specification of brightness limits for LED signs based on accepted practice by the Illuminating Engineering Society of North America (IESNA). The report established criteria for brightness limits based on sign size. The recommended brightness level is 0.3 Foot candles above ambient light conditions. Illuminance can be measured simply by using a Foot candle meter held at a height of approximately five feet and aimed towards a sign consistent with the sign-to-viewer distance. A reading of no more than 0.3 Foot candles above ambient light conditions would indicate compliance. All of Daktronics signs are designed to comply with the 0.3 foot candle industry lighting standard.

The proposed signage LED message center will be programmed to turn off at 11 PM each day and turn back on at sunrise each morning.