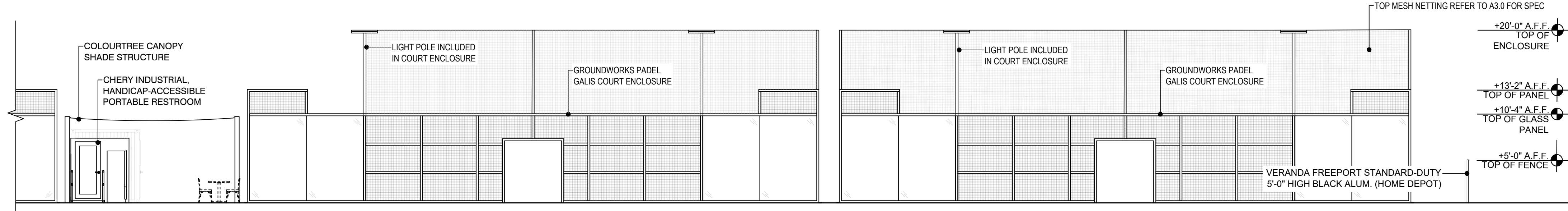
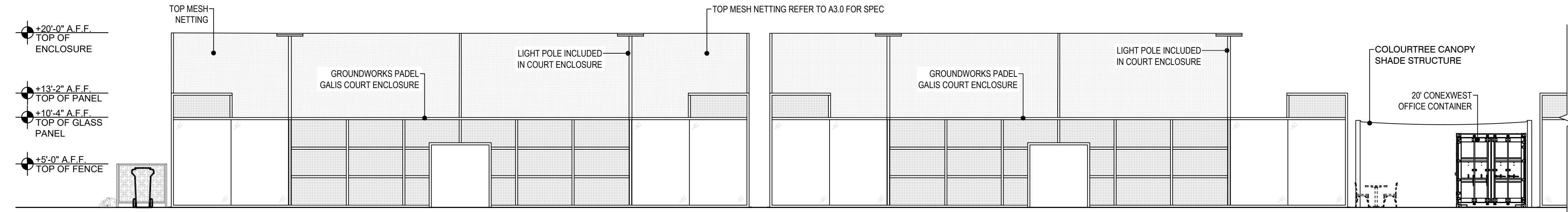


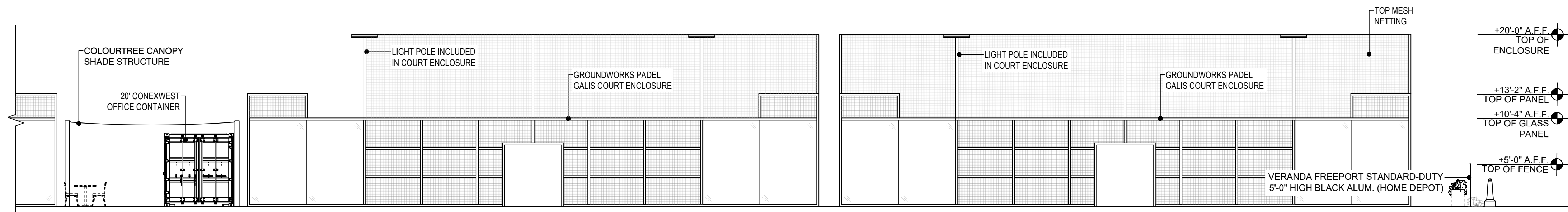
1 WEST ELEVATION
SCALE: 1/8"=1'-0"



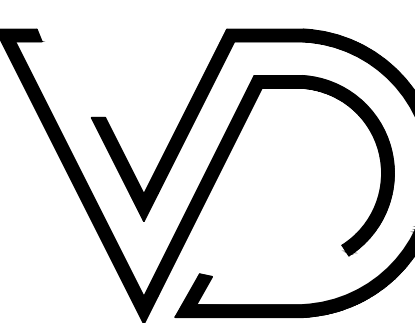
2 WEST ELEVATION
SCALE: 1/8"=1'-0"



3 EAST ELEVATION
SCALE: 1/8"=1'-0"

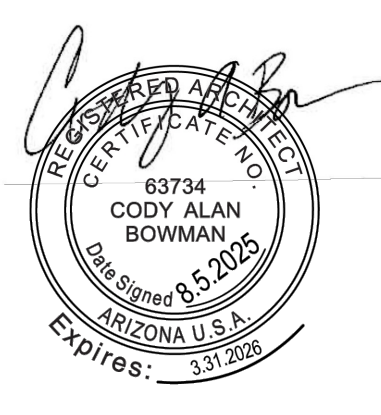


4 EAST ELEVATION
SCALE: 1/8"=1'-0"




Vitruvian Design

4425 E. AGAVE ROAD #136
PHOENIX, ARIZONA 85044
TEL: 480.232.2072
ARCHITECT OF RECORD
CODY BOWMAN
CONTACT: PHIL HARRIS
480.232.2072
PHIL@VITRUVIANDSIGN.NET



MESA PADEL CLUB

219 WEST MAIN STREET
MESA, AZ 85201



ISSUE DATES	
04.13.2025	ISSUED FOR PERMIT: SITE PLAN SUBMITTAL
07.14.2025	ZONING REVISIONS
08.06.2025	ZONING REVISIONS

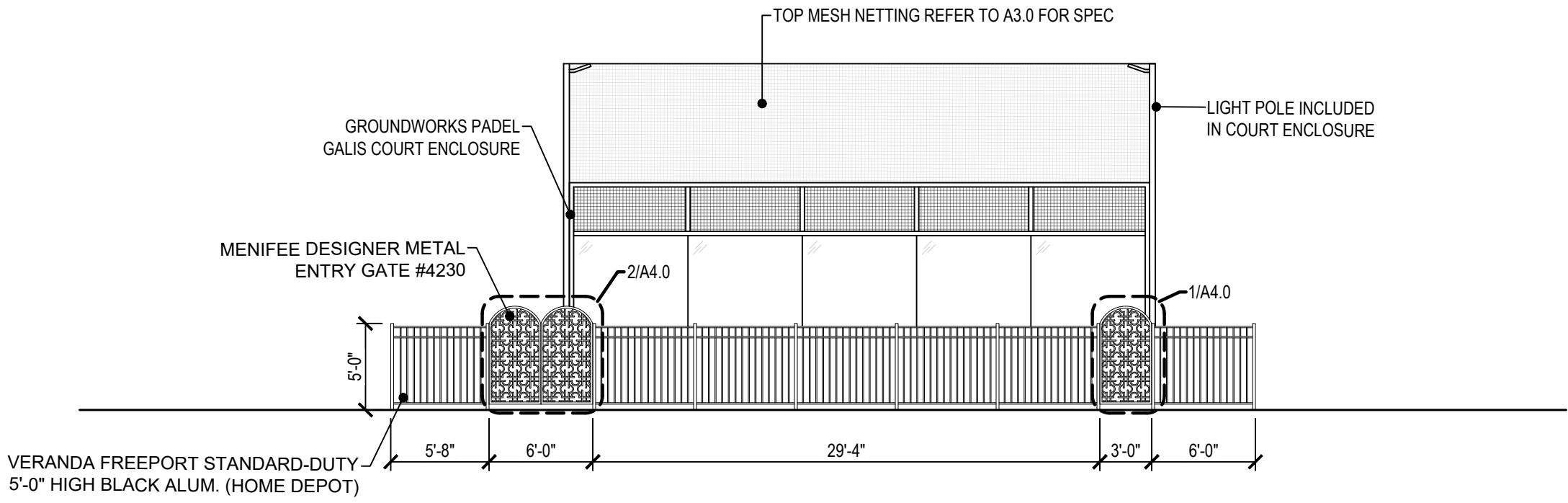
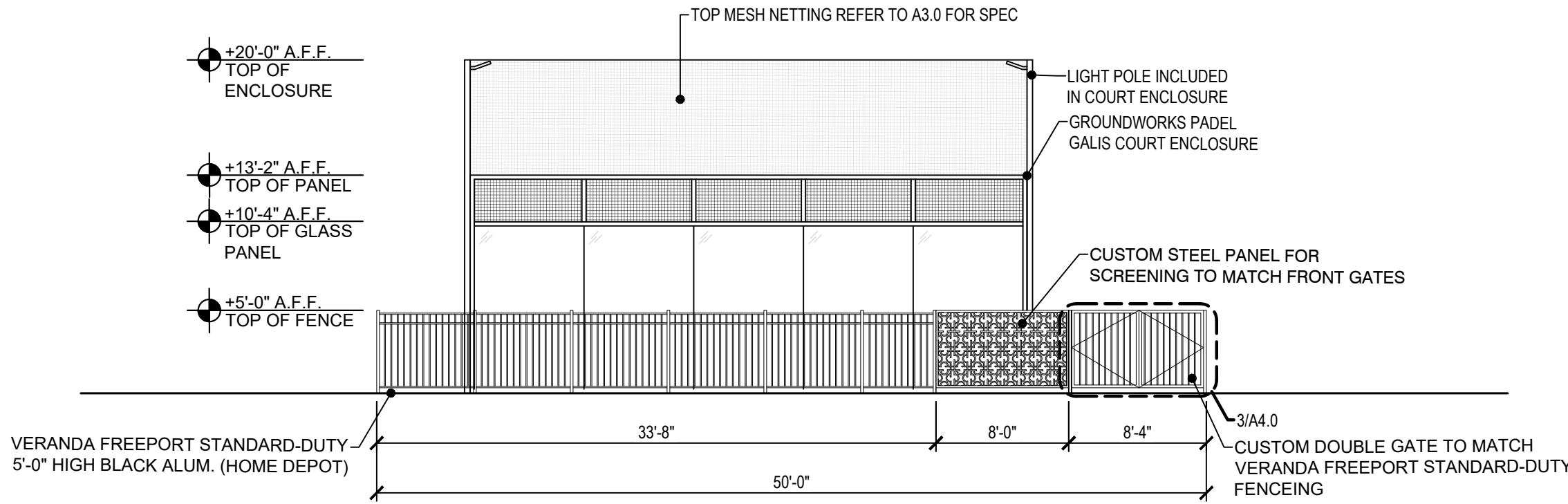
REVISIONS	
DATE	DESCRIPTION

DRAWN BY	CHECKED BY
DS	HP

ELEVATIONS

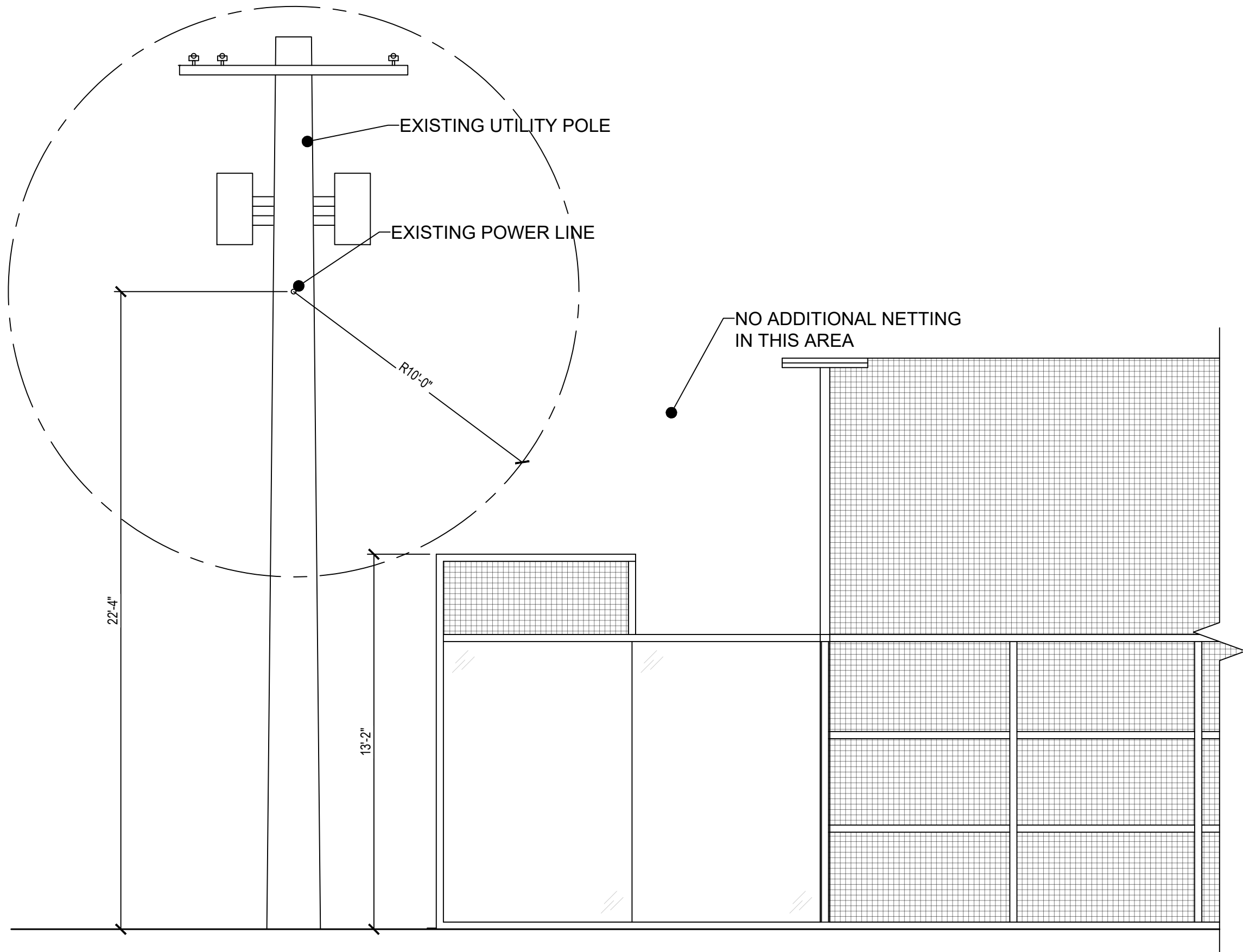
A2.0

PROJECT NUMBER:
280



5 SOUTH ELEVATION
SCALE: 1/8"=1'-0"

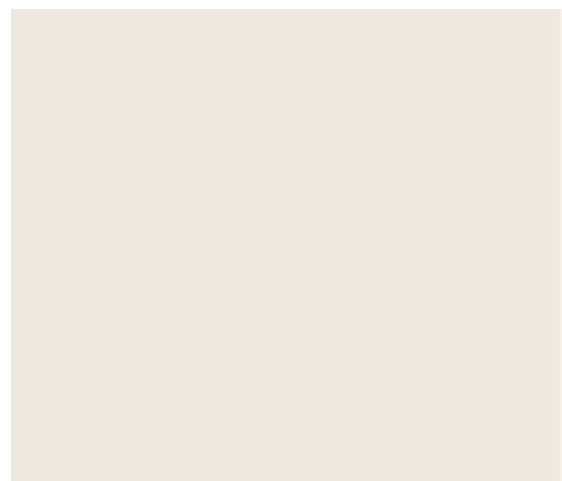
6 NORTH ELEVATION
SCALE: 1/8"=1'-0"



VERANDA FREEPORT STANDARD-DUTY
5'-0" HIGH BLACK ALUM. (HOME DEPOT)



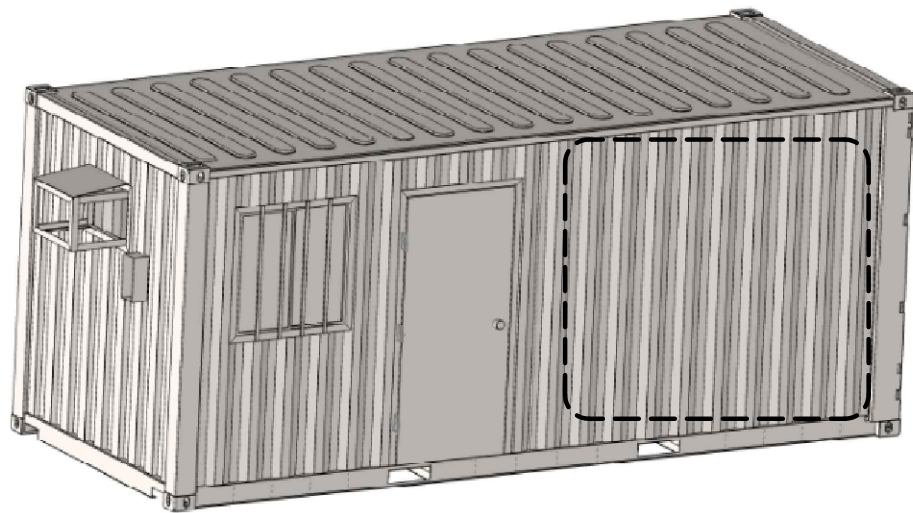
GROUNDWORKS PADEL
GALIS COURT ENCLOSURE



PAINT
SW 7008 ALABASTER SIMI-GLOSS
OFFICE CONTAINER



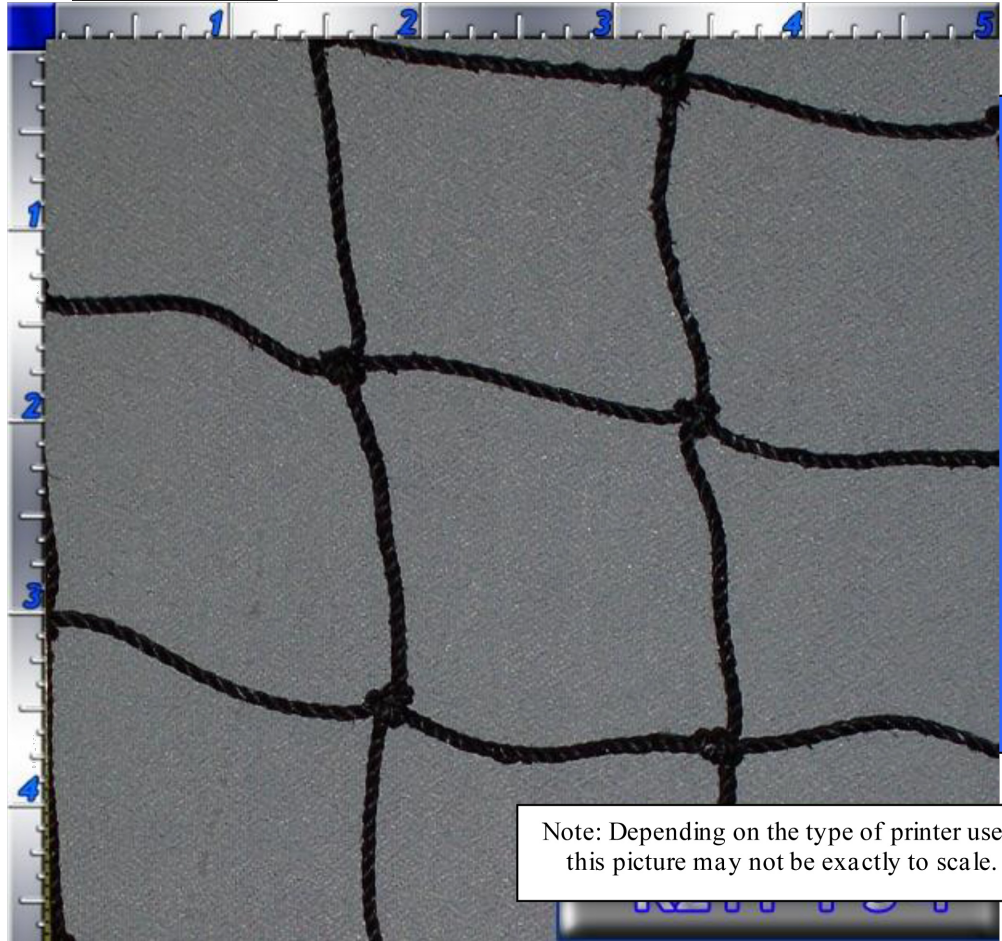
TURF
OAKMONT - KIAWAH - ALL PLAY SERIES



OFFICE CONTAINER: LOGO & MURAL LOCATION
DESIGN T.B.D



Model No: #K21T-1 3/4"



Note: Depending on the type of printer used,
this picture may not be exactly to scale.

Fiber Content: 100% Polyester Filament
Construction: Three-strand twisted twine in a knotted composition.
Mesh Style: Manufactured on the bias (or diamond) but cut on the square for custom sizes.
Yield: 40 square feet per pound.
Mesh Size: 1 3/4" square mesh or 3 3/4" Stretched Mesh
Twine Diameter: Approx. 1/16" or 0.063"
Approx. Wind Load: 8% of solid
Mesh Breaking Strength: 195 pounds (Per ISO method 1806).
Life Span: 10+ years

Treatment Options: Typical treatment is with a black latex coating for added UV protection.

extended net life and abrasion resistance. We also offer this same treatment in a variety of colors including a clear and we can add a Flame Guard product (complete with certificate).

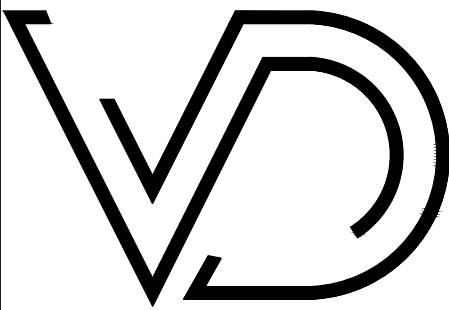
Borders: Typical border is a black 3/8" polypropylene hollow-braid rope border. This netting is doubled over and then the rope is laced in and out of every mesh to form a complete border for attachment. Other methods available are 1.5" & 2" vinyl and webbing borders that are sewn along the perimeter with grommets for attaching points.

WCN being the manufacturer of the above described product does hereby provide this information as to the best of our knowledge to be true and accurate. This information is being offered as a possible helpful suggestion in experimentation you may care to undertake along these lines. It is therefore subject to revision as additional knowledge and experience are gained. Except when agreed to in writing for specific conditions of use, no warranty or guarantee, expressed or implied, is made regarding the performance of any product, since the manner of use and handling are beyond our control.

MESH NETTING

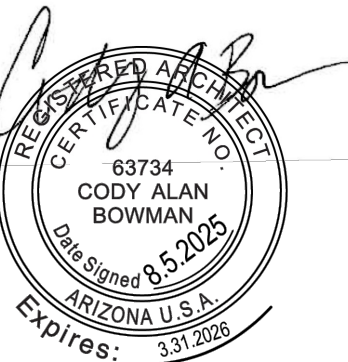
8 EXISTING OVERHEAD FACILITIES
SCALE: N.T.S.

7 COLORS AND MATERIALS
N.T.S.



Vitruvian Design

4425 E. AGAVE ROAD #136
PHOENIX, ARIZONA 85044
TEL: 480.232.2072
ARCHITECT OF RECORD
CODY BOWMAN
CONTACT: PHIL HARRIS
480.232.2072
PHIL@VITRUVIANDSIGN.NET



MESA PADEL CLUB

219 WEST MAIN STREET
MESA, AZ 85201



ISSUE DATES	
04/15/2025	ISSUED FOR PERMIT SITE PLAN SUBMITTAL
07/14/2025	ZONING REVISIONS
08/05/2025	ZONING REVISIONS

REVISIONS	
DATE	DESCRIPTION

DRAWN BY	CHECKED BY
DS	HP

ELEVATIONS &
COLORS

A3.0

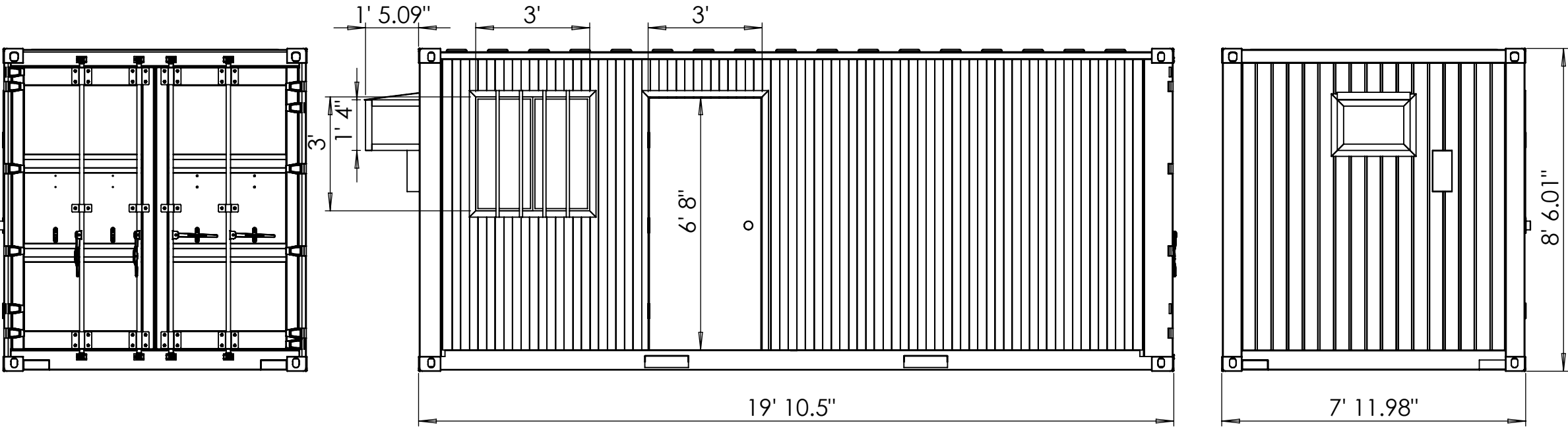
PROJECT NUMBER:

280

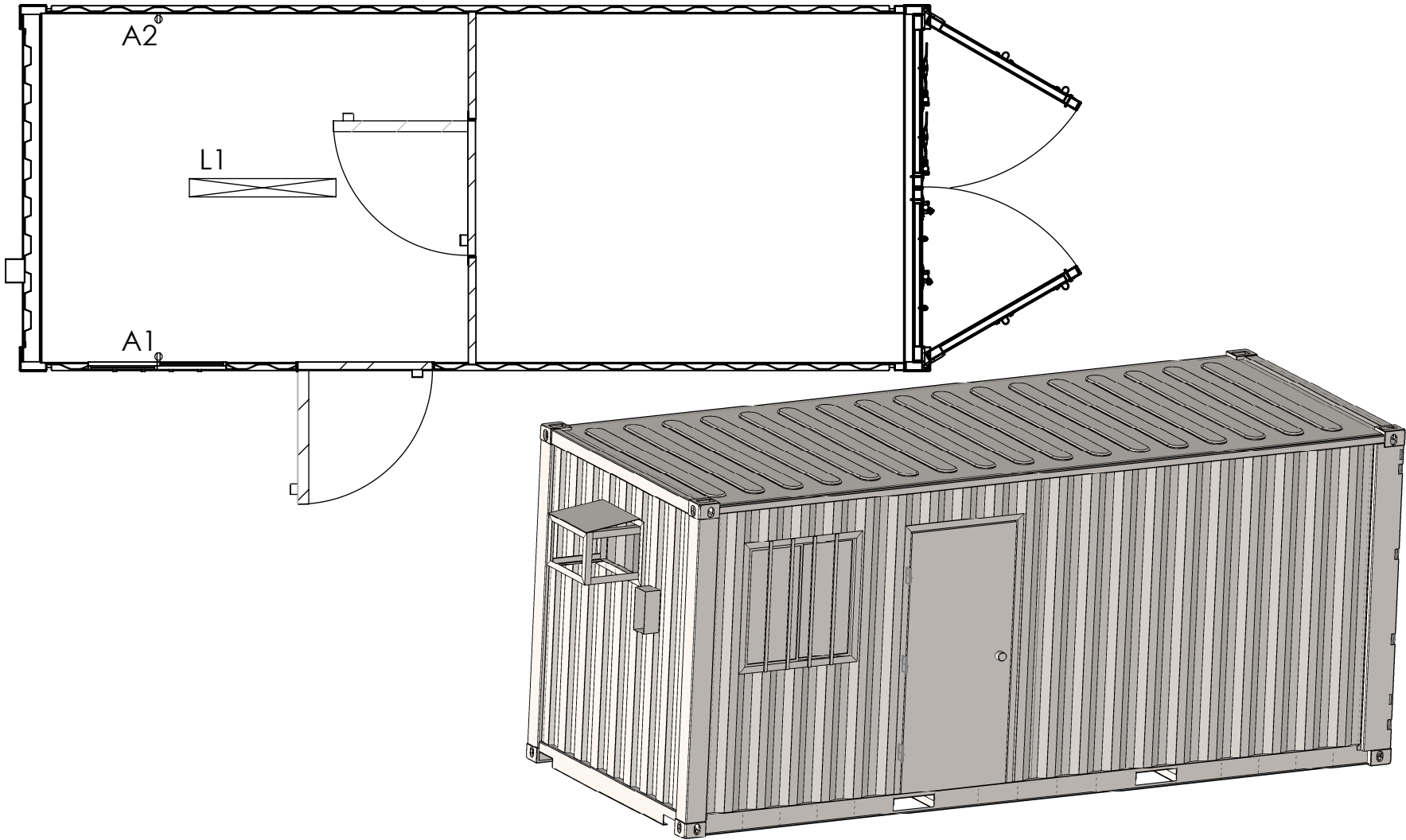
FRONT SIDE VIEW

RIGHT SIDE VIEW

REAR SIDE VIEW



ELECTRIC PLAN



THIS DRAWING AND THE INFORMATION HEREIN CONTAINED ARE THE PROPERTY OF "CONEXWEST" WHICH HAS FURNISHED THEM IN CONFIDENCE UPON THE UNDERSTANDING AND CONDITIONS ALL PERSONS, FIRMS OR CORPORATIONS RECEIVING THEM BE DEEMED TO HAVE AGREED TO MAKE NO COPY, DUPLICATION, DISCLOSURE OR USE WHATSOEVER OF ALL OR ANY PART THEREOF EXCEPT AS EXPRESSLY AUTHORIZED IN WRITING BY "CONEXWEST"

Conexwest
855-878-5233
800 Avenue H, San Francisco CA 94130
sales@conexwest.com

GENERAL NOTES

- 1. IF YOU HAVE QUESTIONS - ASK!
- 2. DO NOT SCALE DRAWING.
- 3. REMOVE ALL SHARP CORNERS
- 4. REMOVE ALL WELD SPLATTER
- 5. MATERIAL IS LISTED
- 6. QUANTITY IS LISTED

5		
4		
3		
2		
1		

REV#	DATE	DESCRIPTION
------	------	-------------



PRODUCT	20' OFFICE CONTAINER
---------	----------------------

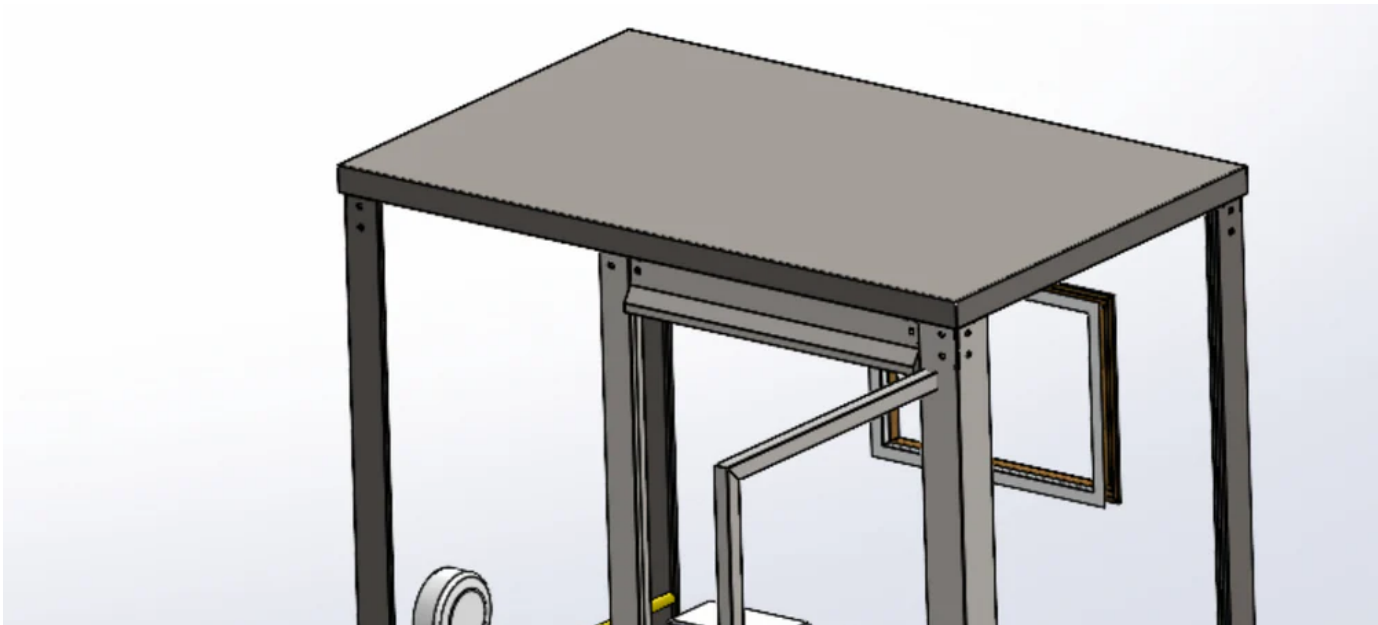
TITLE	20' OFFICE
-------	------------

SKU	
-----	--

DATE 1.10.19	SCALE: NOT TO SCALE
--------------	---------------------

DRAWN BY M.S	CHECKED BY M.H
--------------	----------------


Get 10% off with code OFFER10* | ⚡ Free shipping Over \$1,000! (Excluding AS-IS and CLEARANCE) | ☎ 888-589-8148




🔍 Roll over image to zoom in Click on image to zoom



Search...

Close



The image is a thumbnail of the main product image, showing the portable restroom unit from a different angle.

[Login / Signup](#) 0

[My account](#) [Cart](#)



Handicap-Accessible Portable Restroom for Disabled

BASTONE SKU: PM000122
★★★★★ 6 reviews | Ask a question



Price: \$9,500

Stock: Re-stocking soon

Quantity:

-

1

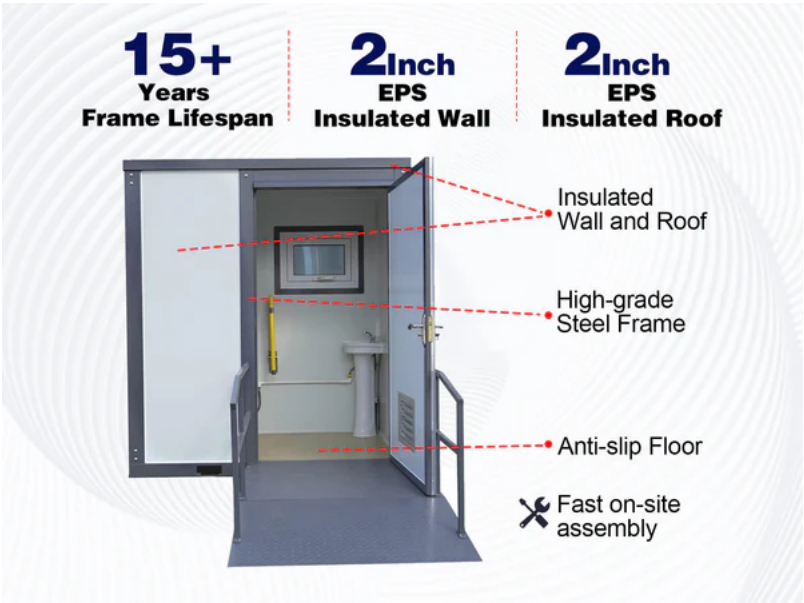
+

From \$943/month with Credit Key [Apply Now](#)
BUY NOW, PAY LATER FOR BUSINESS

Buy Now

Description

We proudly provide Bastone Handicap-Accessible Portable Restroom for business owners and individuals who need it. We have tool-free removable arms beside the toilet to improve flexibility for users. This unit has a wider space to accommodate a full-size adult wheelchair and movement within the stall.



View in VR

The VR model may have different features, please check product pictures to confirm.



Specification

Description	Specifications
Model	Handicap-Accessible Portable Restroom
Dimension (LxWxH)	81"x50.4"x90"
Interior Dimension (LxWxH)	75.6"x44.6"x84.6"
Door Size	W 39.4" x H 77"

Net Area	23.4 ft ²
Frame	Steel
Surface Coating	High-Temperature Resistant Paint
Roof Material	2-inch EPS fire-resistant & insulated roof panels
Wall Material	2-inch EPS fire-resistant & insulated wall panels
Floor Material	Anti-skid and wear-resistant floor leather+Hard PVC board
R-value	7.09~8.27
Doors	EPS Composite Panel Outward Opening Door
Circuit Breaker Spec	13~16 Amps
Power Supply	110V~220V
Wire info	3 core 2.5 sqmm
Wiring Instructions	White Wire: Neutral Wire Black Wire: Live Wire Green or Yellow-green Wire: Earth Wire
Flush volume	1.6 gpf
Inlet Pipe Material	PPR Pipe
Inlet Pipe Inner diameter	4/5 inch
Outlet Pipe Material	PVC Pipe
Outlet Pipe Inner diameter	Gray Water Pipe: 1 ½ inch Black Water Pipe: 3 inch
Lowest Pipe Working Temperature	14°F (if iced, please use 122°F water to melt)
Fire-proof Level	B2
Wind Load	56 MPH
Snow Load	125 lb/sqft
Forklift Pockets	Dimension: W7"x H3" Distance between forklift pocket: 28"
Lifespan	15+ Years
Warranty	1 Year

Set up

There are 4 lifting lugs for transportation on the top and a forklift slot on the bottom. The equipment needs to be unloaded using a crane or forklift.

Footing options

- Concrete slab or pads
- Compacted ground
- Concrete or Steel stumps

Note: The finished height of the surface must be level. Consulting a qualified person is recommended.

Note:

The customer must arrange for a licensed Electrician to supply and Install all wiring.

All pipe connection needs thread seal tape, instead of glue, to seal.

Our Portable Restrooms need to be supplied with city water or well pump water, and all portable toilet "sewage" needs to be connected to the city sewer system or a simple septic system.

If this Bastone Handicap-Accessible Portable Restroom for the Disabled is used on a construction site, we recommend you connect toilets to the sanitary sewer system and connect water to the pipe system. If not, you may need tanks outside the structure for waste.

If it's a concrete floor, please use twist-n-lock anchors on 4 corners of the portable restroom, and use wire rope to connect the anchor and the top corner of the portable restroom.

If it's a soil floor, please use 20 inches - 28 inches ground nails on 4 corners and use wire rope to connect the anchor and top corner of the portable restroom.

How to Secure Portable Toilets



● Lifting Lugs

Secure with wire rope at the lifting lugs.

● Tie Down Cleats

For concrete floors, use expansion bolts at four anchors and secure with wire rope at the top.

For soil floors, use 20-28 inch ground nails at four anchors and secure with wire rope at the top.



Unloading reference