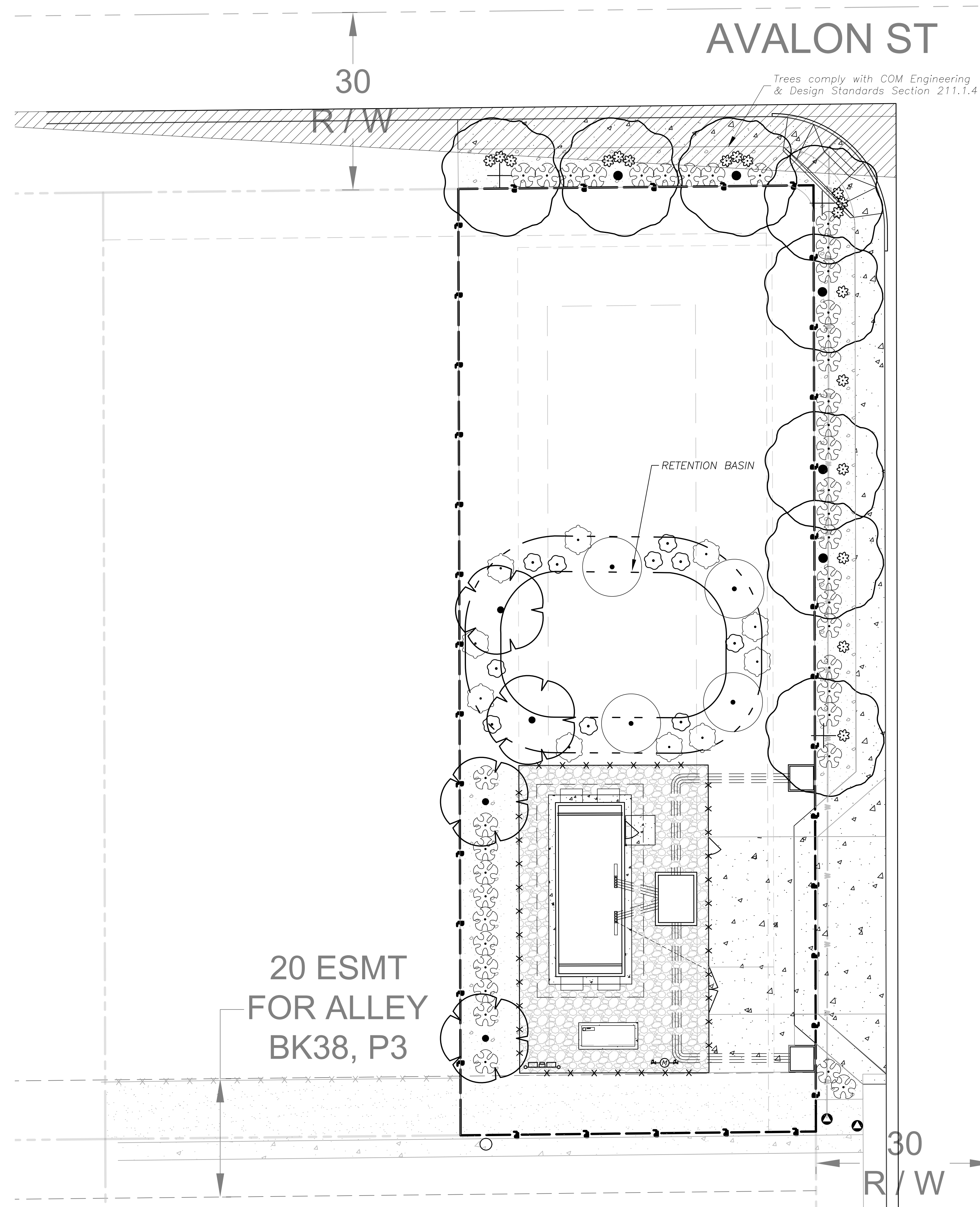


Jun 28, 2023 - 4:26pm Plotted By: ben.mullinnix T:\032030.72.01 GF PHX HUT 115\DWG\Eng\Sheet\115-12 6739 E AVALON\PHX HUT 115-SHRS-LANDSCAPE PLAN.dwg Layout: LANDSCAPE PLAN



PLANT SCHEDULE

EVERGREEN TREES	QTY	BOTANICAL / COMMON NAME	CONT
	5	Acacia pendula / Weeping Myall	24"box
	3	Acacia pendula / Weeping Myall	36"box
	4	Cordia boissieri / Anacahuita	24"box
SHRUBS	QTY	BOTANICAL / COMMON NAME	SPEC
	4	Acacia redolens 'Low Boy' / Low Boy Bank Catclaw	5 gal
	18	Chrysactinia mexicana / Damianita	1 gal
	41	Dalea frutescens / Black Dalea	5 gal
	10	Helianthus maximiliani 'Lemon Yellow' / Lemon Yellow Maximilian Sunflower	1 gal
	10	Leucophyllum langmaniae 'Lynn's Legacy' / Lynn's Legacy Langman's Sage	5 gal

MULCH SCHEDULE

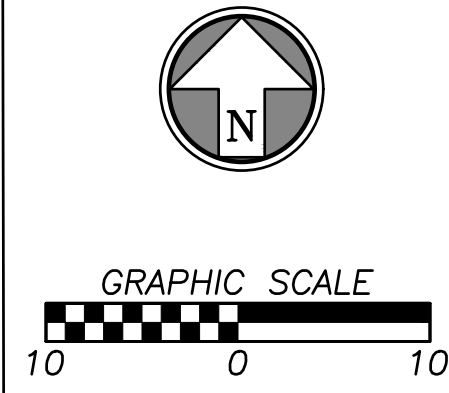
DECOMPOSED GRANITE 1,690 sf
 Fine to 1/4" particle size. 3" depth. Tan color or equivalent.

SITE DATA

	Quantity	Required	Provided
Street Landscape			
Avalon Street (LF)	72		
1 tree / 25LF		2.88	3
25% of trees at min 36" box size		0.72	1
50% of trees at min 24" box size		1.44	2
6 shrubs / 25LF		17.28	18
50% of shrubs min 5 gal size		8.64	9
Sunaire (LF)	121.39		
1 tree / 25LF		4.86	5
25% of trees at min 36" box size		1.21	2
50% of trees at min 24" box size		2.43	5
6 shrubs / 25LF		29.13	30
50% of shrubs min 5 gal size		14.57	21
Yard Landscape			
Yard width		15' wide	10' wide
West Property Line (LF)	160		52.5
3 non-deciduous trees / 100LF		4.8	3
50% of trees at min 24" box size		2.4	3
20 shrubs / 100 LF		32	14
50% of yard planted (SF)*		1200	175.84
			26.7% planted
		given small lot	
South Property Line		*Unable to plant due to existing conditions and utilities	
Retention Basin			
planted on all areas		Y	Y
Ground Treatment			
decomposed granite (or equal) on all planting areas not dedicated to trees/shrubs		Y	Y

GENERAL LANDSCAPE NOTES

- The Contractor shall verify and coordinate all final grades with the Landscape Architect and or design team prior to completion.
- Location of all utilities are approximate, the Contractor shall field verify locations prior to commencement of construction operations.
- Refer to Civil Drawings for all grading and berming, erosion control, storm drainage, utilities and site layout.
- Plant quantities are for information only, drawing shall prevail if conflict occurs. Contractor is responsible for calculating own quantities and bid accordingly.
- Tree locations in areas adjacent to drives, walks, walls and light fixtures may be field adjusted as approved by Landscape Architect.
- The Contractor shall report subsurface soil or drainage problems to the Landscape Architect.
- The plan is subject to changes based on plant size and material availability. All changes or substitutions must be approved by the City of Mesa, Arizona and the Landscape Architect.
- Landscape Contractor shall be responsible for watering all plant material until the time that a permanent water source is ready.
- The Contractor shall show proof of procurement, sources, quantities, and varieties for all shrubs, perennials, ornamental grasses, and annuals within 21 days following the award of the contract.
- Contractor shall provide full maintenance for newly landscaped areas for a period of 30 days after the date of final acceptance. At the end of the maintenance period, a healthy, well-rooted, even-colored, viable turf and landscaped area must be established. The landscaped areas shall be free of weeds, open joints, bare areas, and surface irregularities.



<p>NOT FOR CONSTRUCTION</p>	<p>PHC CIVIL ENGINEERING / ARCHITECTURE 10101 Central Expressway, Suite 400 Overland Park, Kansas 66210 P: 913.663.1800 PHC is a subsidiary of Brueggemann & Associates, P.A.</p>
<p>Prepared For:</p> <p>GOOGLE FIBER INC.</p>	<p>Design: RSV Drawn: TBW Checked: RSV Issue Date: 06/28/2023 Project No.: 032030.72.01</p>
<p>GOOGLE FIBER HUT PHX 115 6739 E AVALON ST MESA, AZ 85205</p>	<p>BOARD OF ADJUSTMENT SUP SITE IMPROVEMENT PLANS LANDSCAPE PLAN</p>
<p>7 of 12</p> <p>L1.0</p>	