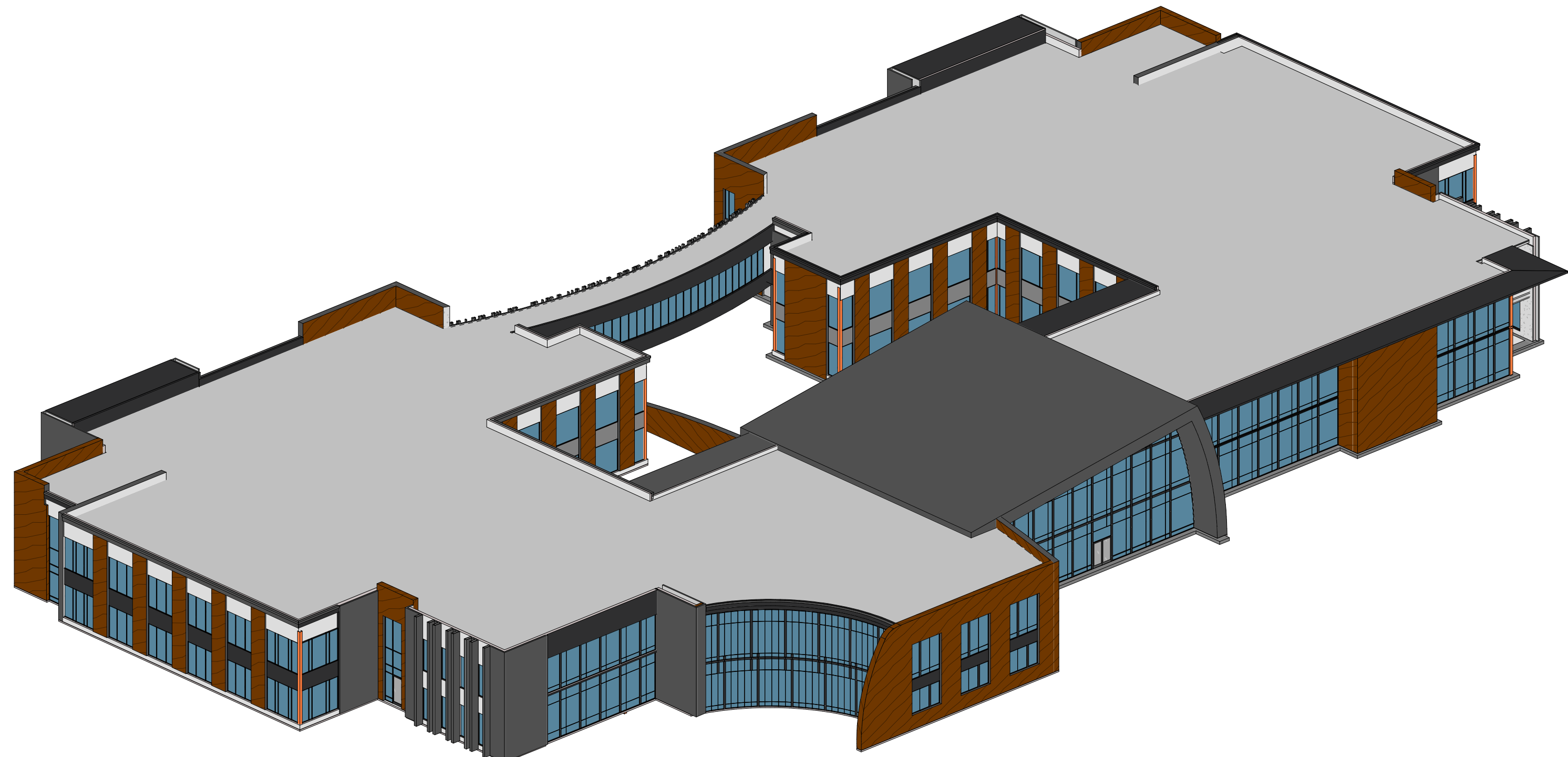


15/05/2024 2:29:54 PM



KEYNOTE LEGEND

OVERALL % EXTERIOR ELEVATION COLOR:

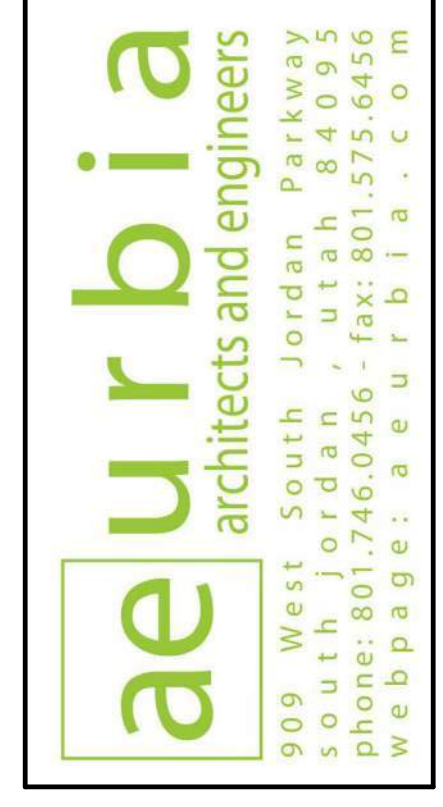
- 7% = PAINTED CONCRETE TILT UP PANEL - LIGHT GRAY
- 28% = RAMMED EARTH
- 36% = GLASS WITH REFLECTIVE COATING
- 1% = CAST-IN-PLACE ARCHITECTURAL CONCRETE
- 11% = BLACK ACM METAL PANELS
- 16% = MEDIUM GRAY ACM METAL PANELS
- 2% = WHITE FIBER CEMENT PANELS

GENERAL EXTERIOR FINISH NOTES:

1. ALL EXTERIOR CONCRETE WALLS THAT REQUIRE PAINTING SHALL BE SACK AND PATCHED PRIOR TO PAINTING.
2. REFER TO ELECTRICAL SHEETS FOR ALL EXTERIOR LIGHTING AND COORDINATE ALL NECESSARY POWER LOCATIONS APPROPRIATELY.
3. SEE DETAILS FOR TYPICAL CONCRETE REVEALS AND PANEL JOINTS.
4. CAULK AND SEAL ALL EXTERIOR JOINTS WITH APPROVED POLYURETHANE SEALANT.
5. REFER TO MECHANICAL COM-CHECK FOR GLAZING STANDARDS.
6. EXTERIOR FINISHES AND SAMPLES MUST BE PRESENTED AND APPROVED PRIOR TO APPLICATION.
7. ALL PRODUCTS MUST BE INSTALLED PER THE MANUFACTURER'S RECOMMENDATION AND MUST COMPLY WITH ALL WIND LOADING PER THE GENERAL STRUCTURAL NOTES.

GENERAL NOTES

1. CONTRACTOR TO PROVIDE SUBMITTALS FOR REVIEW.
2. ALL GLAZING WITHIN 24" INCH OF A DOOR/FLOOR SHALL BE TEMPERED.
3. COORDINATE GRADING WITH CIVIL.
4. SEE DETAILS FOR WINDOW HEADER, JAMB AND SILL DETAILS.
5. ALL EXTERIOR GLASS TO BE DOUBLE PANE TINTED AND TO BE LOW 'E'. VERIFY GLASS SPECIFICATIONS WITH COM-CHECK PROVIDED BY MECHANICAL ENGINEER.
6. REFER TO MECHANICAL COM-CHECK FOR MINIMUM DESIGN STANDARDS FOR GLAZING.
7. ALL EXTERIOR CONCRETE WALLS THAT REQUIRE PAINTING SHALL BE SACK AND PATCHED PRIOR TO PAINTING.
8. REFER TO ELECTRICAL SHEETS FOR ALL EXTERIOR LIGHTING AND COORDINATE ALL NECESSARY POWER LOCATIONS APPROPRIATELY. ALL CONDUIT REQUIRED FOR EXTERIOR LIGHTING TO BE HIDDEN ON THE INTERIOR SIDE OF WALLS.
9. SEE DETAILS FOR TYPICAL CONCRETE REVEALS AND PANEL JOINTS. ALL DOORS AND GLAZING SYSTEMS TO HAVE REVEALS SEE DETAILS.
10. CONTRACTOR TO COORDINATE THAT ALL REVEALS LINE UP FROM PANEL TO PANEL AND AROUND CORNERS AND RETURN AT EDGES.
11. METAL PARAPET CAPS TO RETURN.
12. CAULK AND SEAL ALL EXTERIOR JOINTS WITH APPROVED POLYURETHANE ELASTOMERIC SEALANT. COLOR MATCH CAULK TO FINISHED PANEL AND MUST BE PAINTABLE.
13. SPANDREL GLAZING TO MATCH EXTERIOR FINISH OF REGULAR GLAZING.
14. EXTERIOR FINISHES AND SAMPLES MUST BE PRESENTED AND APPROVED PRIOR TO APPLICATION.
15. EXTERIOR EDGE OF POUR-THROUGH SLAB, BELOW ALL OPENINGS (STOREFRONT, CURTAIN-WALL, OVERHEAD AND MAN DOORS, ECT.) TO BE SACK AND PATCHED, PRIMED AND PAINTED TO MATCH SURROUNDING CONCRETE PANEL.
16. CONTRACTOR TO COORDINATE OVERHEAD DOOR TRACKS AND CROSSBAR VISIBILITY IN WINDOW.

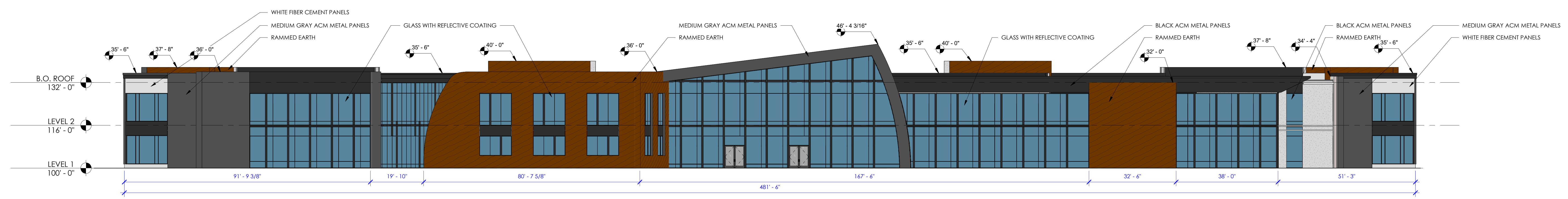


PRELIMINARY NOT FOR CONSTRUCTION

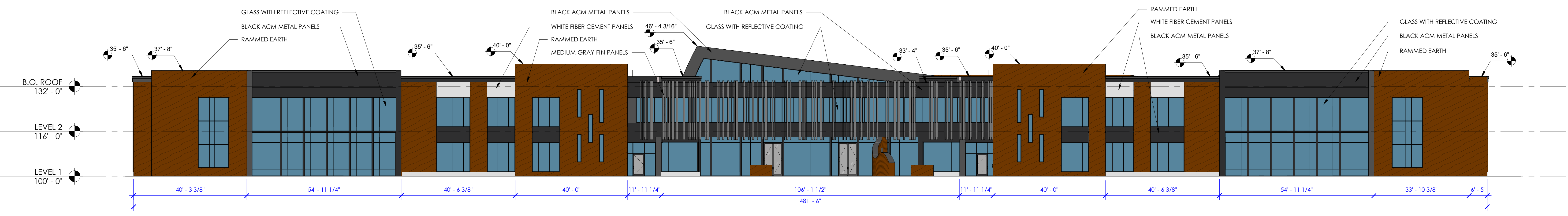
6/25/2024 2:29:54 PM

CONFIDENTIAL
NOVA Holdings, LLC- AZ OFFICE
MESA, ARIZONA

C5 3D VIEW
A201



B5 NORTH ELEVATION
A201
1/16" = 1'-0"



A5 SOUTH ELEVATION
A201
1/16" = 1'-0"

MARK	DESCRIPTION	Revision Date

AE2023.073

EXTERIOR ELEVATION

DATE: 6/4/2024

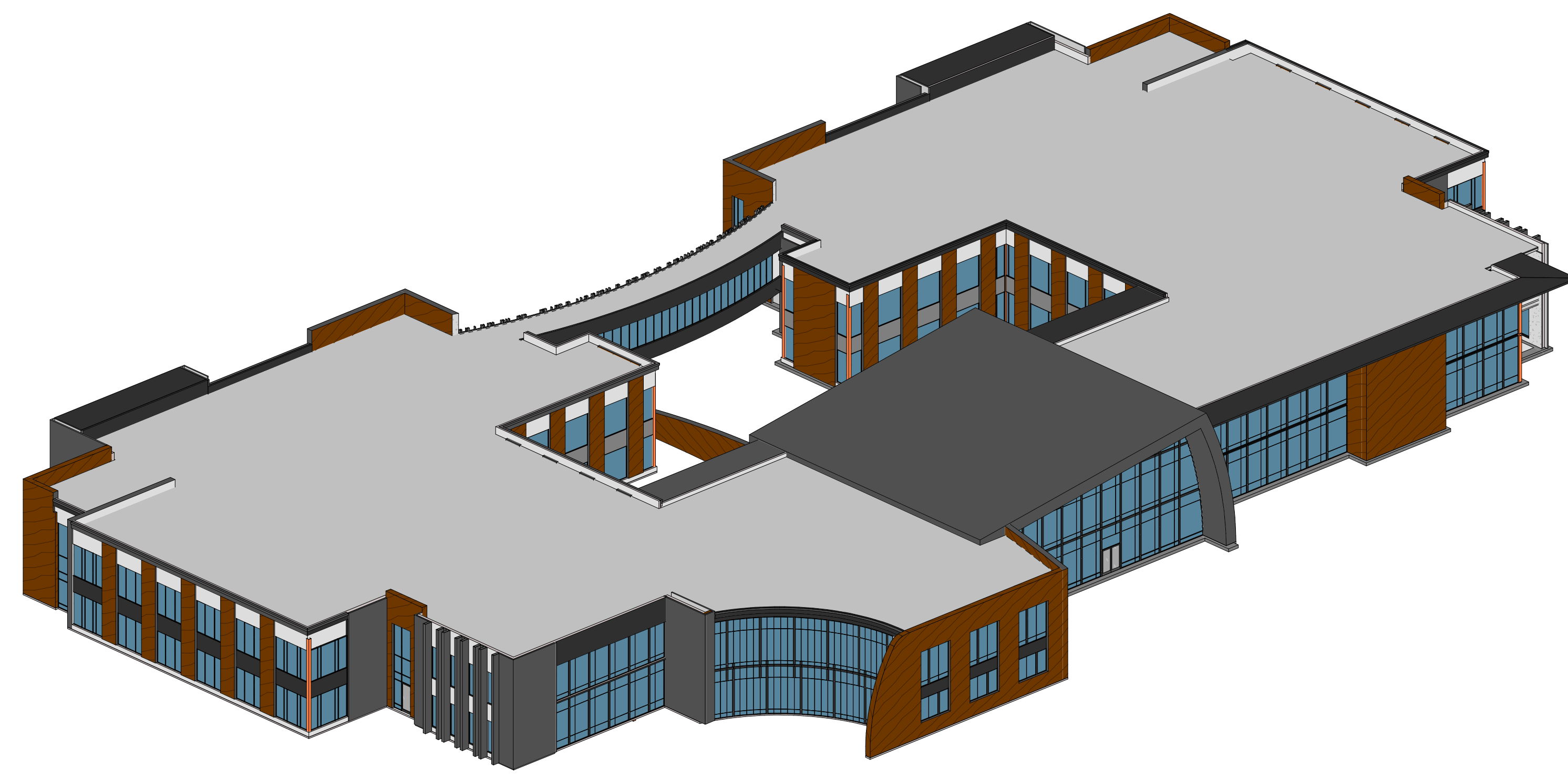
SHEET #:

A201

COPYRIGHT © AEURBIA, LLC.

FORMAL DESIGN PACKAGE

02/28/24 2:29:56 PM
C
B
A
5
4
3
2
1



C5
A202
3D VIEW

KEYNOTE LEGEND

OVERALL % EXTERIOR ELEVATION COLOR:

- 7% = PAINTED CONCRETE TILT UP PANEL - LIGHT GRAY
- 28% = RAMMED EARTH
- 36% = GLASS WITH REFLECTIVE COATING
- 1% = CAST-IN-PLACE ARCHITECTURAL CONCRETE
- 11% = BLACK ACM METAL PANELS
- 16% = MEDIUM GRAY ACM METAL PANELS
- 2% = WHITE FIBER CEMENT PANELS

GENERAL EXTERIOR FINISH NOTES:

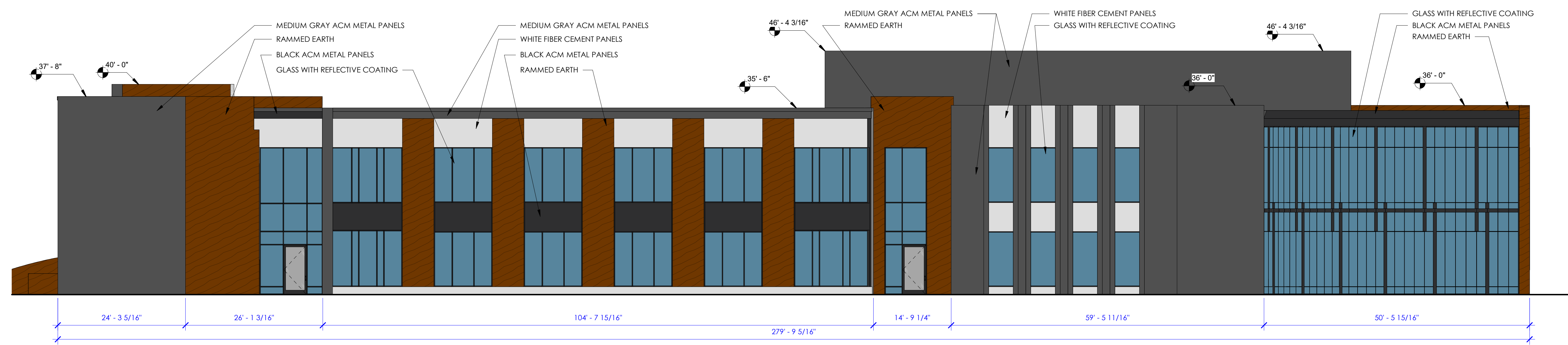
1. ALL EXTERIOR CONCRETE WALLS THAT REQUIRE PAINTING SHALL BE SACK AND PATCHED PRIOR TO PAINTING.
2. REFER TO ELECTRICAL SHEETS FOR ALL EXTERIOR LIGHTING AND COORDINATE ALL NECESSARY POWER LOCATIONS APPROPRIATELY.
3. SEE DETAILS FOR TYPICAL CONCRETE REVEALS AND PANEL JOINTS.
4. CAULK AND SEAL ALL EXTERIOR JOINTS WITH APPROVED POLYURETHANE SEALANT.
5. REFER TO MECHANICAL COM-CHECK FOR GLAZING STANDARDS.
6. EXTERIOR FINISHES AND SAMPLES MUST BE PRESENTED AND APPROVED PRIOR TO APPLICATION.
7. ALL PRODUCTS MUST BE INSTALLED PER THE MANUFACTURER'S RECOMMENDATION AND MUST COMPLY WITH ALL WIND LOADING PER THE GENERAL STRUCTURAL NOTES.

GENERAL NOTES

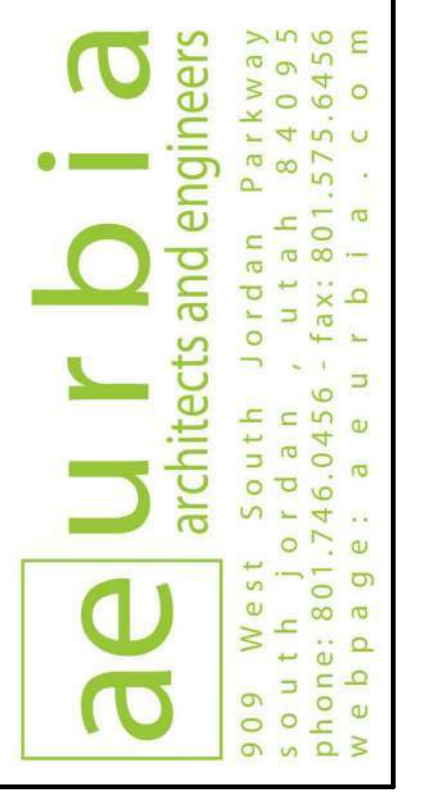
1. CONTRACTOR TO PROVIDE SUBMITTALS FOR REVIEW.
2. ALL GLAZING WITHIN 24" INCH OF A DOOR/FLOOR SHALL BE TEMPERED.
3. COORDINATE GRADING WITH CIVIL.
4. SEE DETAILS FOR WINDOW HEADER, JAMB AND SILL DETAILS.
5. ALL EXTERIOR GLASS TO BE DOUBLE PANE TINTED AND TO BE LOW 'E'. VERIFY GLASS SPECIFICATIONS WITH COM-CHECK PROVIDED BY MECHANICAL ENGINEER.
6. REFER TO MECHANICAL COM-CHECK FOR MINIMUM DESIGN STANDARDS FOR GLAZING.
7. ALL EXTERIOR CONCRETE WALLS THAT REQUIRE PAINTING SHALL BE SACK AND PATCHED PRIOR TO PAINTING.
8. REFER TO ELECTRICAL SHEETS FOR ALL EXTERIOR LIGHTING AND COORDINATE ALL NECESSARY POWER LOCATIONS APPROPRIATELY. ALL CONDUIT REQUIRED FOR EXTERIOR LIGHTING TO BE HIDDEN ON THE INTERIOR SIDE OF WALLS.
9. SEE DETAILS FOR TYPICAL CONCRETE REVEALS AND PANEL JOINTS. ALL DOORS AND GLAZING SYSTEMS TO HAVE REVEALS SEE DETAILS.
10. CONTRACTOR TO COORDINATE THAT ALL REVEALS LINE UP FROM PANEL TO PANEL AND AROUND CORNERS AND RETURN AT EDGES.
11. METAL PARAPET CAPS TO RETURN.
12. CAULK AND SEAL ALL EXTERIOR JOINTS WITH APPROVED POLYURETHANE ELASTOMERIC SEALANT. COLOR MATCH CAULK TO FINISHED PANEL AND MUST BE PAINTABLE.
13. SPANDREL GLAZING TO MATCH EXTERIOR FINISH OF REGULAR GLAZING.
14. EXTERIOR FINISHES AND SAMPLES MUST BE PRESENTED AND APPROVED PRIOR TO APPLICATION.
15. EXTERIOR EDGE OF POUR-THROUGH SLAB, BELOW ALL OPENINGS (STOREFRONT, CURTAIN-WALL, OVERHEAD AND MAN DOORS, ECT.) TO BE SACK AND PATCHED, PRIMED AND PAINTED TO MATCH SURROUNDING CONCRETE PANEL.
16. CONTRACTOR TO COORDINATE OVERHEAD DOOR TRACKS AND CROSSBAR VISIBILITY IN WINDOW.



B5
A202
EAST ELEVATION
3/32" = 1'-0"



A5
A202
WEST ELEVATION
3/32" = 1'-0"



PRELIMINARY
NOT FOR
CONSTRUCTION

6/25/2024 2:29:56 PM

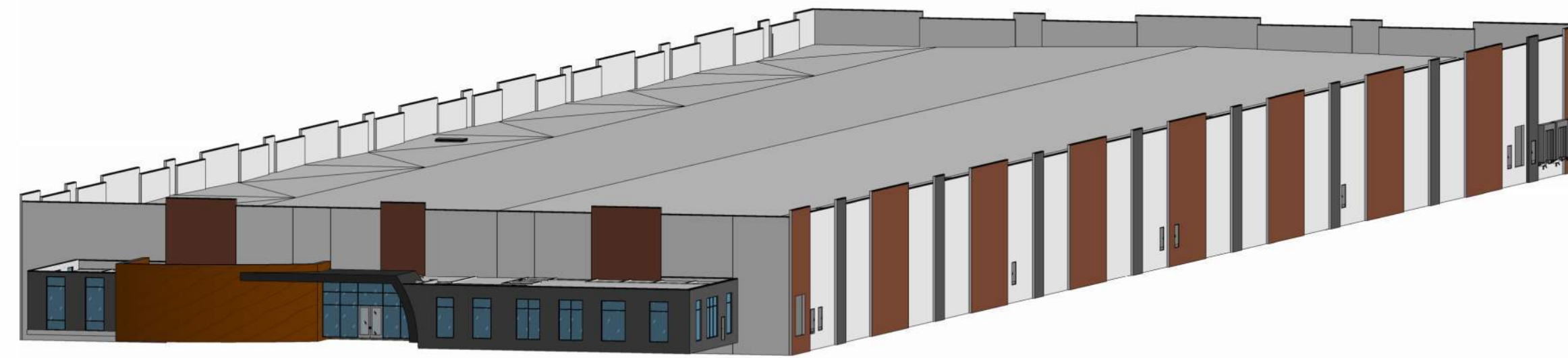
CONFIDENTIAL
NOVA Holdings, LLC- AZ OFFICE
MESA, ARIZONA

MARK	Revision Schedule	DESCRIPTION	Revision Date

AE2023.073
EXTERIOR ELEVATION
DATE: 6/4/2024
SHEET #:
A202
COPYRIGHT © AEURBIA, LLC.

FORMAL DESIGN PACKAGE

6/25/2024 2:10:06 PM
 A
 B
 C
 D
 5
 4
 3
 2
 1



C5 ELEVATIONS - 3D VIEW
PR908 R1.5

OVERALL %

2%		= RAMMED EARTH
2%		= GLASS WITH REFLECTIVE COATING
2%		= CAST-IN-PLACE ARCHITECTURAL CONCRETE
2%		= BLACK ACM METAL PANELS
3%		= MEDIUM GRAY ACM METAL PANELS
7%		= TEXTURE COATED CONCRETE TILT UP PANEL - MEDIUM GRAY
35%		= PAINTED CONCRETE TILT UP PANEL - EARTH TONE W/FORMLINER
47%		= TEXTURE COATED CONCRETE TILT UP PANEL - LIGHT GRAY

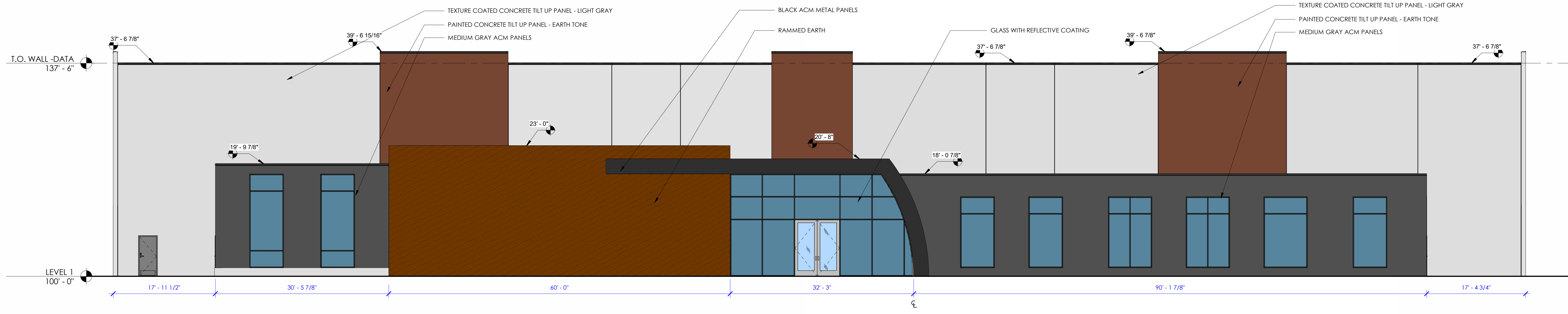
GENERAL EXTERIOR FINISH NOTES:

1. ALL EXTERIOR CONCRETE WALLS THAT REQUIRE PAINTING SHALL BE SACK AND PATCHED PRIOR TO PAINTING.
2. REFER TO ELECTRICAL SHEETS FOR ALL EXTERIOR LIGHTING AND COORDINATE ALL NECESSARY POWER LOCATIONS APPROPRIATELY.
3. SEE DETAILS FOR TYPICAL CONCRETE REVEALS AND PANEL JOINTS.
4. CAULK AND SEAL ALL EXTERIOR JOINTS WITH APPROVED POLYURETHANE SEALANT.
5. REFER TO MECHANICAL COM-CHECK FOR GLAZING STANDARDS.
6. EXTERIOR FINISHES AND SAMPLES MUST BE PRESENTED AND APPROVED PRIOR TO APPLICATION.
7. ALL PRODUCTS MUST BE INSTALLED PER THE MANUFACTURER'S RECOMMENDATION AND MUST COMPLY WITH ALL WIND LOADING PER THE GENERAL STRUCTURAL NOTES.

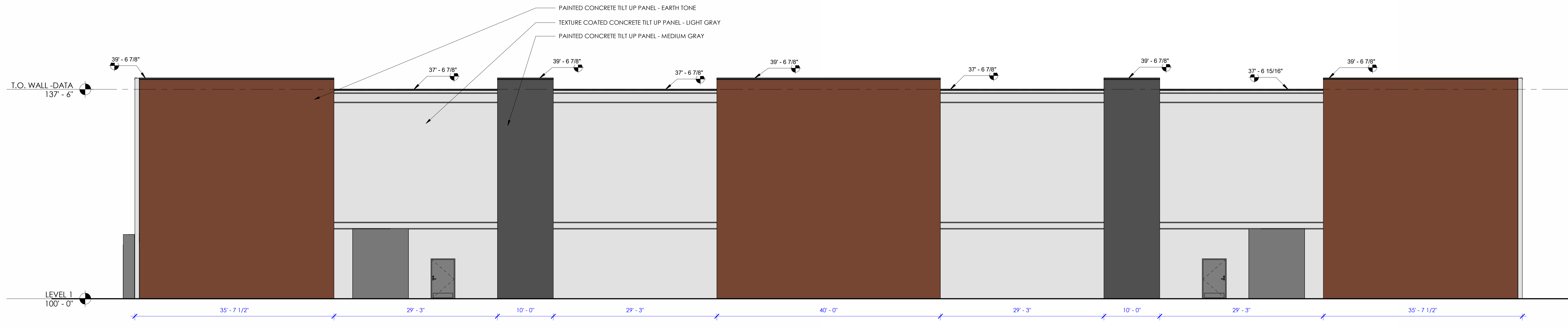
aeurbia
 architects and engineers
 909 West South Jordan Parkway
 South Jordan, Utah 84095
 phone: 801.746.0456 - fax: 801.575.6456
 website: aeurbia.com

**PRELIMINARY
NOT FOR
CONSTRUCTION**

6/25/2024 2:10:06 PM



B5 NORTH ELEVATION
PR908 1/8" = 1'-0"



A5 SOUTH ELEVATION
PR908 1/8" = 1'-0"

CONFIDENTIAL
 NOWVA Holdings, LLC - Data Hall 1
 MESA, ARIZONA

MARK	DESCRIPTION	Revision Date

AE2023.224
EXTERIOR ELEVATIONS

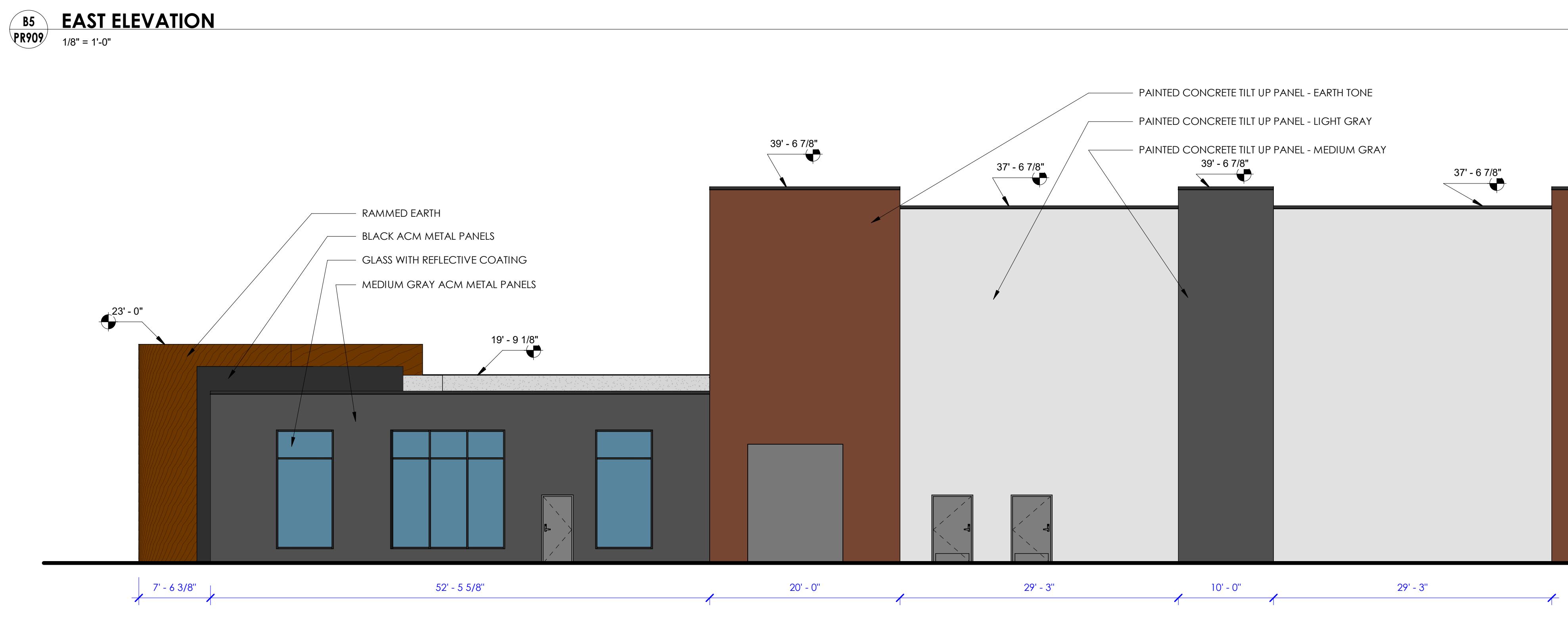
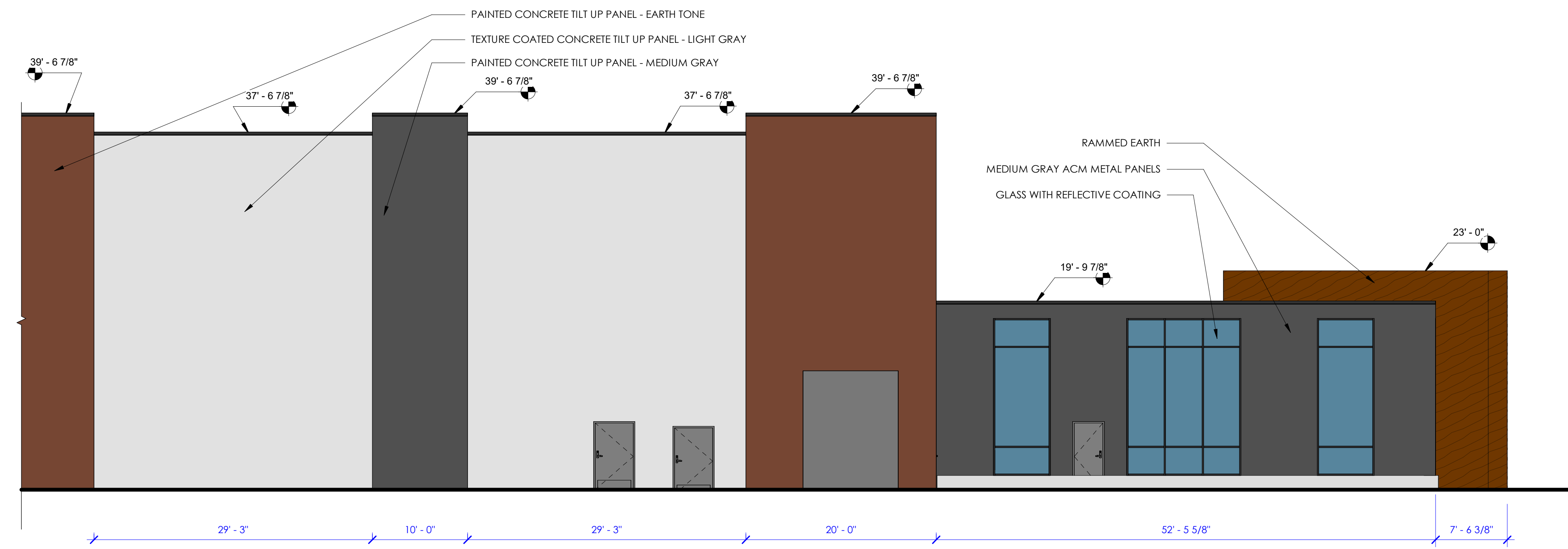
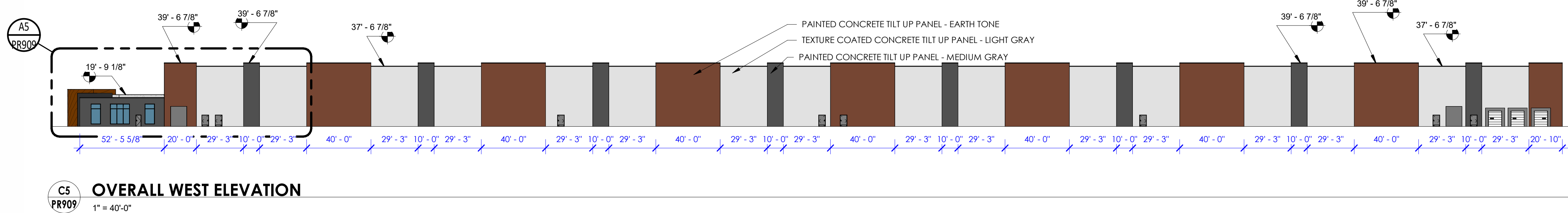
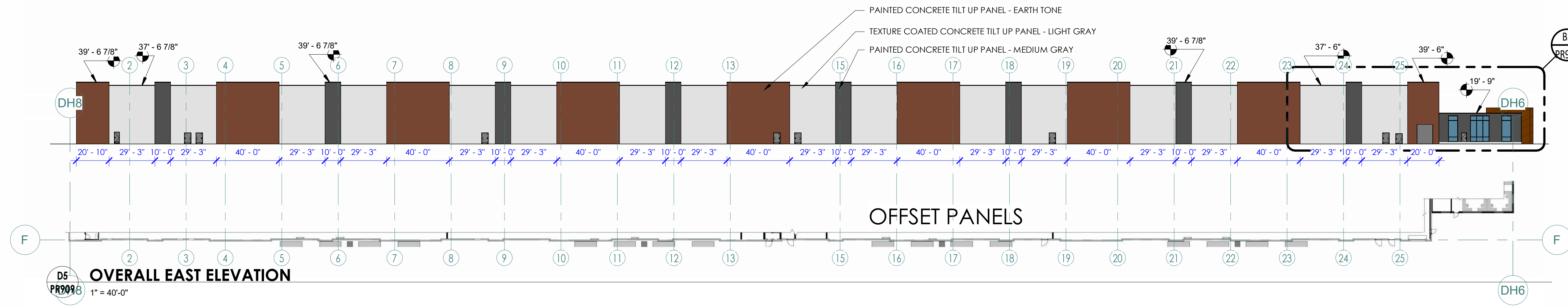
DATE: **06.04.2024**

SHEET #:
PR908

COPYRIGHT ©
AEURBIA, LLC.

FORMAL DESIGN PACKAGE

A5 PR909 1/8" = 1'-0" 13 12 11 10 9 8 7 6 5 4 3 2 1
 B5 PR909 1/8" = 1'-0" 13 12 11 10 9 8 7 6 5 4 3 2 1
 C5 PR909 1" = 40'-0" 13 12 11 10 9 8 7 6 5 4 3 2 1
 D5 PR909 1" = 40'-0" 13 12 11 10 9 8 7 6 5 4 3 2 1
 E5 PR909 1/8" = 1'-0" 13 12 11 10 9 8 7 6 5 4 3 2 1
 F5 PR909 1" = 40'-0" 13 12 11 10 9 8 7 6 5 4 3 2 1



- OVERALL %**
- 2% = RAMMED EARTH
 - 2% = GLASS WITH REFLECTIVE COATING
 - 2% = CAST-IN-PLACE ARCHITECTURAL CONCRETE
 - 2% = BLACK ACM METAL PANELS
 - 3% = MEDIUM GRAY ACM METAL PANELS
 - 7% = TEXTURE COATED CONCRETE TILT UP PANEL - MEDIUM GRAY
 - 35% = PAINTED CONCRETE TILT UP PANEL - EARTH TONE W/FORMLINER
 - 47% = TEXTURE COATED CONCRETE TILT UP PANEL - LIGHT GRAY

- GENERAL EXTERIOR FINISH NOTES:**
1. ALL EXTERIOR CONCRETE WALLS THAT REQUIRE PAINTING SHALL BE SACK AND PATCHED PRIOR TO PAINTING.
 2. REFER TO ELECTRICAL SHEETS FOR ALL EXTERIOR LIGHTING AND COORDINATE ALL NECESSARY POWER LOCATIONS APPROPRIATELY.
 3. SEE DETAILS FOR TYPICAL CONCRETE REVEALS AND PANEL JOINTS.
 4. CAULK AND SEAL ALL EXTERIOR JOINTS WITH APPROVED POLYURETHANE SEALANT.
 5. REFER TO MECHANICAL COM-CHECK FOR GLAZING STANDARDS.
 6. EXTERIOR FINISHES AND SAMPLES MUST BE PRESENTED AND APPROVED PRIOR TO APPLICATION.
 7. ALL PRODUCTS MUST BE INSTALLED PER THE MANUFACTURER'S RECOMMENDATION AND MUST COMPLY WITH ALL WIND LOADING PER THE GENERAL STRUCTURAL NOTES.

aeurbia
 architects and engineers
 909 West South Jordan Parkway
 South Jordan, Utah 84095
 phone: 801.746.0456 - fax: 801.575.6456
 website: aeurbia.com

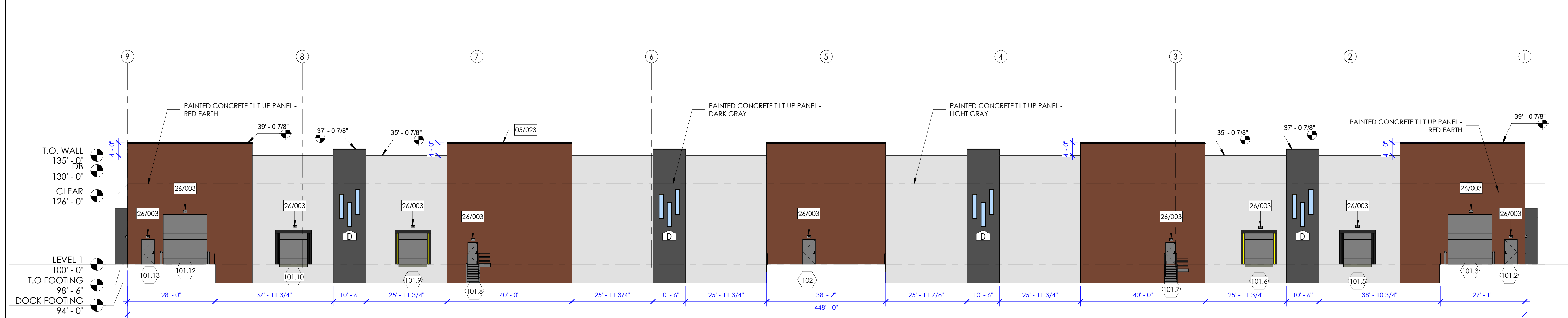
**PRELIMINARY
NOT FOR
CONSTRUCTION**
 6/25/2024 2:10:16 PM

CONFIDENTIAL
 NOWVA Holdings, LLC - Data Hall 1
 MESA, ARIZONA

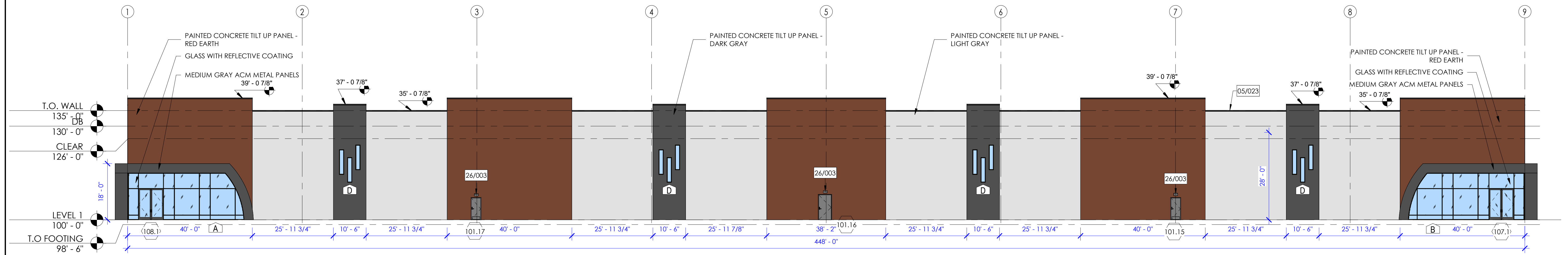
MARK	DESCRIPTION	Revision Date

FORMAL DESIGN PACKAGE
 AE2023.224
EXTERIOR ELEVATION
 DATE: 06.04.2024
 SHEET #:
PR909
 COPYRIGHT ©
 AEURBIA, LLC.

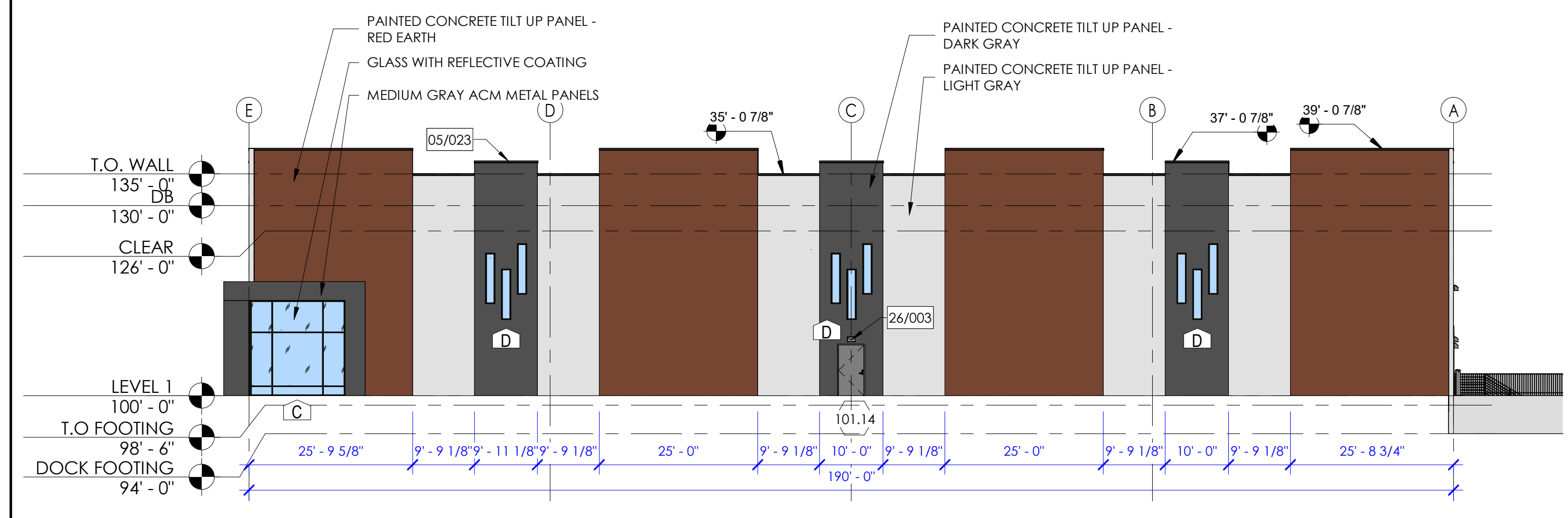
6/25/2024 2:27:51 PM



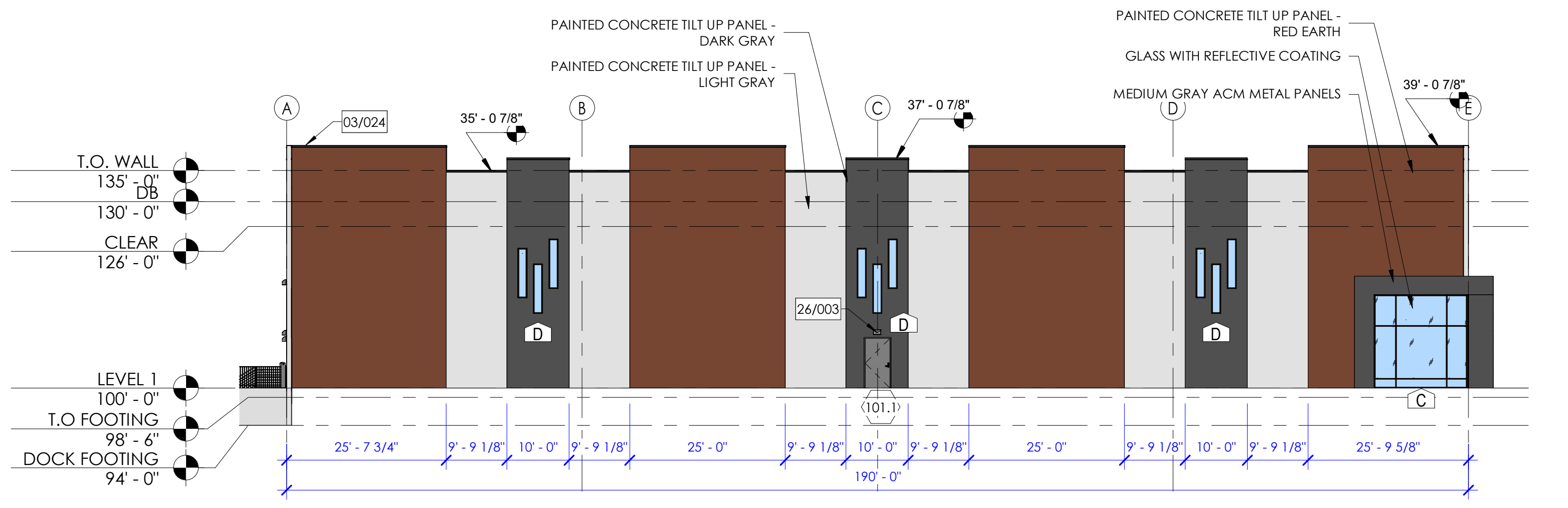
D5 NORTH ELEVATION
A200 1/16" = 1'-0"



C5 SOUTH ELEVATION
A200 1/16" = 1'-0"



B5 EAST ELEVATION
A200 1/16" = 1'-0"



B3 WEST ELEVATION
A200 1/16" = 1'-0"

GENERAL NOTES

- CONTRACTOR TO PROVIDE SUBMITTALS FOR REVIEW.
- ALL GLAZING WITHIN 24" INCH OF A DOOR/FLOOR SHALL BE TEMPERED.
- COORDINATE GRADING WITH CIVIL.
- SEE DETAILS FOR WINDOW HEADER, JAMB AND SILL DETAILS.
- ALL EXTERIOR GLASS TO BE DOUBLE PANE TINTED AND TO BE LOW 'E'. VERIFY GLASS SPECIFICATIONS WITH COM-CHECK PROVIDED BY MECHANICAL ENGINEER.
- REFER TO MECHANICAL COMCHECK FOR MINIMUM DESIGN STANDARDS FOR GLAZING.
- ALL EXTERIOR CONCRETE WALLS THAT REQUIRE PAINTING SHALL BE SACK AND PATCHED PRIOR TO PAINTING.
- REFER TO ELECTRICAL SHEETS FOR ALL EXTERIOR LIGHTING AND COORDINATE ALL NECESSARY POWER LOCATIONS APPROPRIATELY. ALL CONDUIT REQUIRED FOR EXTERIOR LIGHTING TO BE HIDDEN ON THE INTERIOR SIDE OF WALLS.
- SEE DETAILS FOR TYPICAL CONCRETE REVEALS AND PANEL JOINTS. ALL DOORS AND GLAZING SYSTEMS TO HAVE REVEALS SEE DETAILS.
- CONTRACTOR TO COORDINATE THAT ALL REVEALS LINE UP FROM PANEL TO PANEL AND AROUND CORNERS AND RETURN AT EDGES.
- METAL PARAPET CAPS TO RETURN.
- CAULK AND SEAL ALL EXTERIOR JOINTS WITH APPROVED POLYURETHANE ELASTOMERIC SEALANT. COLOR MATCH CAULK TO FINISHED PANEL AND MUST BE PAINTABLE.
- SPANDREL GLAZING TO MATCH EXTERIOR FINISH OF REGULAR GLAZING.
- EXTERIOR FINISHES AND SAMPLES MUST BE PRESENTED AND APPROVED PRIOR TO APPLICATION.
- EXTERIOR EDGE OF POUR-THROUGH SLAB, BELOW ALL OPENINGS (STOREFRONT, CURTAIN-WALL, OVERHEAD AND MAIN DOORS, ECT.) TO BE SACK AND PATCHED, PRIMED AND PAINTED TO MATCH SURROUNDING CONCRETE PANEL.
- CONTRACTOR TO COORDINATE OVERHEAD DOOR TRACKS AND CROSSBAR VISIBILITY IN WINDOW.

EXTERIOR ELEVATION COLOR:

- = PAINTED CONCRETE TILT UP PANEL - DARK GRAY
- = PAINTED CONCRETE TILT UP PANEL - LIGHT GRAY
- = PAINTED CONCRETE TILT UP PANEL - RED EARTH
- = LIGHT GRAY TINTED GLAZING (OR APPROVED EQUAL) (AS PER COMCHECK, SEE MECH)
- = MEDIUM GRAY ACM METAL PANELS

GENERAL EXTERIOR FINISH NOTES:

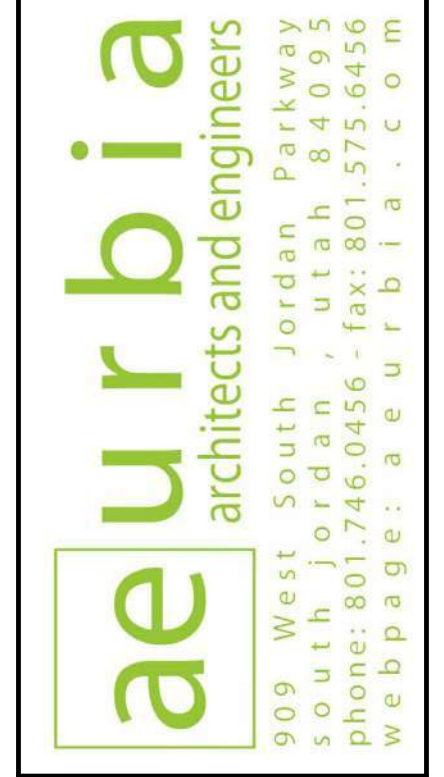
- ALL EXTERIOR CONCRETE WALLS THAT REQUIRE PAINTING SHALL BE SACK AND PATCHED PRIOR TO PAINTING.
- REFER TO ELECTRICAL SHEETS FOR ALL EXTERIOR LIGHTING AND COORDINATE ALL NECESSARY POWER LOCATIONS APPROPRIATELY.
- SEE DETAILS FOR TYPICAL CONCRETE REVEALS AND PANEL JOINTS.
- CAULK AND SEAL ALL EXTERIOR JOINTS WITH APPROVED POLYURETHANE SEALANT.
- REFER TO MECHANICAL COM-CHECK FOR GLAZING STANDARDS.
- EXTERIOR FINISHES AND SAMPLES MUST BE PRESENTED AND APPROVED PRIOR TO APPLICATION.
- ALL PRODUCTS MUST BE INSTALLED PER THE MANUFACTURER'S RECOMMENDATION AND MUST COMPLY WITH ALL WIND LOADING PER THE GENERAL STRUCTURAL NOTES.

WINDOW FRAMES:

- = ALUMINUM CURTAIN WALL; ANODIZED ALUMINUM FINISH
- = LIGHT GRAY TINTED GLAZING (OR APPROVED EQUAL) (AS PER COMCHECK, SEE MECH)
- = METAL CAP BLACK ANODIZED

NOTES

- CONTRACTOR TO PROVIDE SUBMITTALS FOR APPROVAL.
- ALL GLAZING WITHIN 24" INCH OF A DOOR/FLOOR SHALL BE TEMPERED.
- SEE SHEET A612 FOR WINDOW HEADER, JAMB AND SILL DETAILS.
- ALL EXTERIOR GLASS TO BE DOUBLE PANE TINTED AND TO BE LOW 'E'. VERIFY GLASS SPECIFICATIONS WITH COM-CHECK PROVIDED BY MECHANICAL ENGINEER.
- REFER TO MECHANICAL COMCHECK FOR MINIMUM DESIGN STANDARDS FOR GLAZING.



PRELIMINARY NOT FOR CONSTRUCTION
6/25/2024 2:27:51 PM

CONFIDENTIAL
NOVA Holdings, LLC - WAREHOUSE
NWC OF WARNER ROAD AND ELLSWORTH ROAD
MESA, AZ 85016

REVISION SCHEDULE		
#	DESCRIPTION	DATE

AE2024.007
EXTERIOR ELEVATIONS
DATE: 06/23/2024
SHEET #:
A200
COPYRIGHT © AEURBIA, LLC.

PROGRESS SET

6/25/2024 2:27:51 PM

6/27/2024 5:42:27 PM

D

C

B

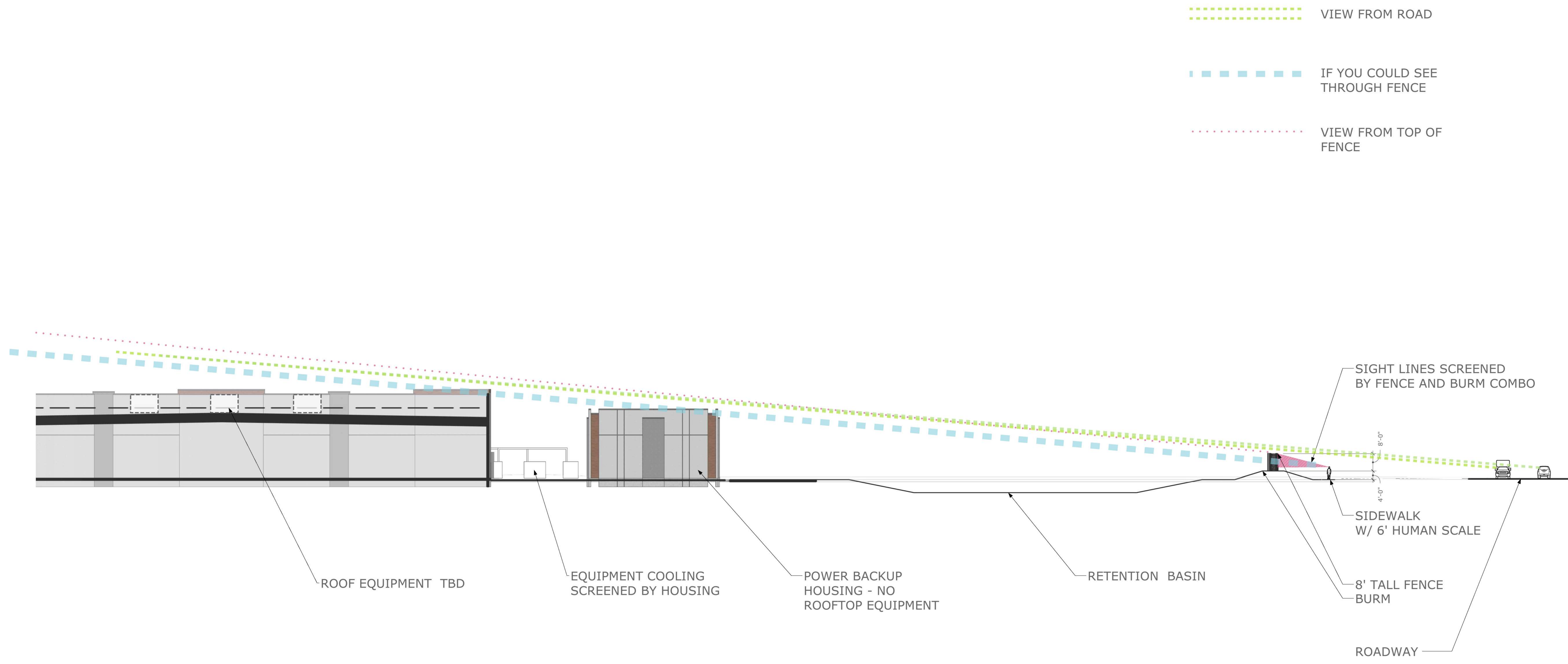
6/27/2024 5:42:27 PM
A

14

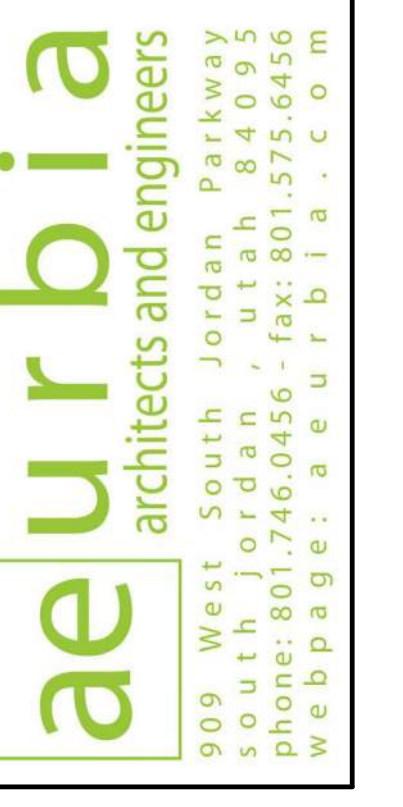
13

12

11



- VIEW FROM ROAD
- - - - - IF YOU COULD SEE THROUGH FENCE
- VIEW FROM TOP OF FENCE



**PRELIMINARY
NOT FOR
CONSTRUCTION**

6/27/2024 5:42:27 PM

CONFIDENTIAL
NOVVA - MESA ELLSWORTH
MESA, ARIZONA

MARK	DESCRIPTION	Revision Schedule	Revision Date

AE2023.073
SCREENING SIGHTLINES
DATE: 6/4/2024
SHEET #:
PR904

FORMAL DESIGN PACKAGE

COPYRIGHT © AE URBIA, LLC.