

Sign Package

Springs at Red Mountain

Mesa, AZ

May 15, 2019

SPRINGS
APARTMENTS

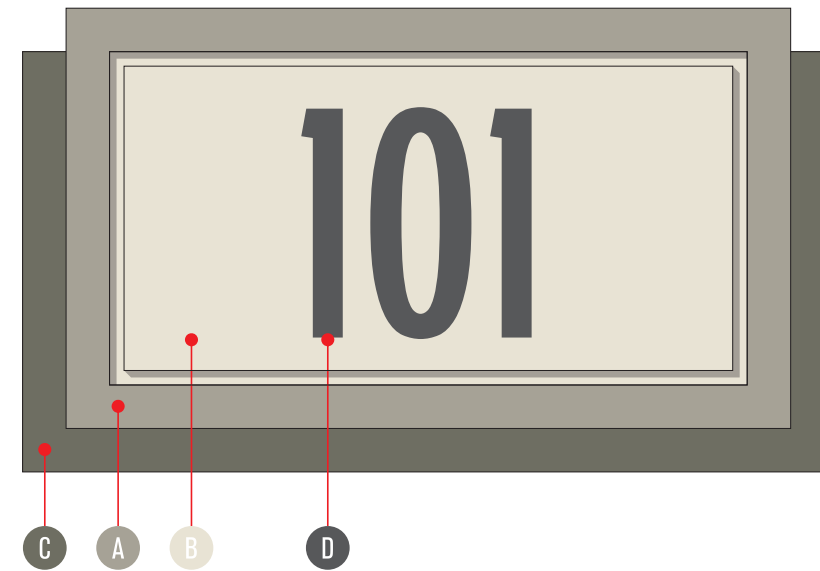
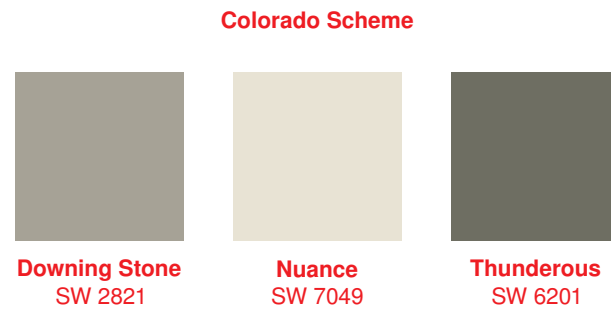
ssi

Sign Specifications

- 1 Internally illuminated cabinet with routed aluminum faces
- 2 Non-illuminated aluminum cabinet
- 3 .5" push thru acrylic copy with vinyl overlay
- 4 .25" thick aluminum plate copy
- 5 Masonry base (by others)
- 6 19" x 97" Daktronics Monochrome EMC
- 7 Halo illuminated reverse channel letter
- 8 .125" thick routed acrylic frame
- 9 .125" thick acrylic insert with routed inset border
- 10 .125" thick acrylic backer
- 11 .125" thick acrylic panel with white vinyl copy
- 12 3mm thick ACM panel
- 13 Sign-A-Cade portable sign system
- 14 .040" thick polystyrene
- 15 Laminate overlay
- 16 Tactile copy and graphics
- 17 Appropriate tactile braille
- 18 Digitally printed vinyl overlay

Color Specifications

- A SW 2821 Downing Stone, semi-gloss finish
- B SW 7049 Nuance, semi-gloss finish
- C SW 6201 Thunderous, semi-gloss finish
- D 3M 7725-41 Dark Gray, opaque vinyl
- E 3M 3630-149 Light Beige, translucent vinyl
- F Mactac JT5796M B-Free Frosted Vinyl
- G Black, semi-gloss finish
- H PPG 1023-4 Desert Dune
- I PPG 1023-1 Oatmeal
- J Laminart 5305 Fly Ash Concrete



Monument Sign Masonry Base
Eldorado Stone
Nantucket Stacked Stone

CLIENT

SPRINGS

APARTMENTS

CONTACT

A

SITE

Mesa, AZ

FILE

Sales Rep
CJ Hines

File Name
springs RED MTN

Design
TDH

Draft: 11.15.18

Rev 1:
Rev 2:
Rev 3:
Rev 4:
Rev 5:
Rev 6:

CLIENT REVIEW

Approved

Approved as Noted

Revise & Re-submit

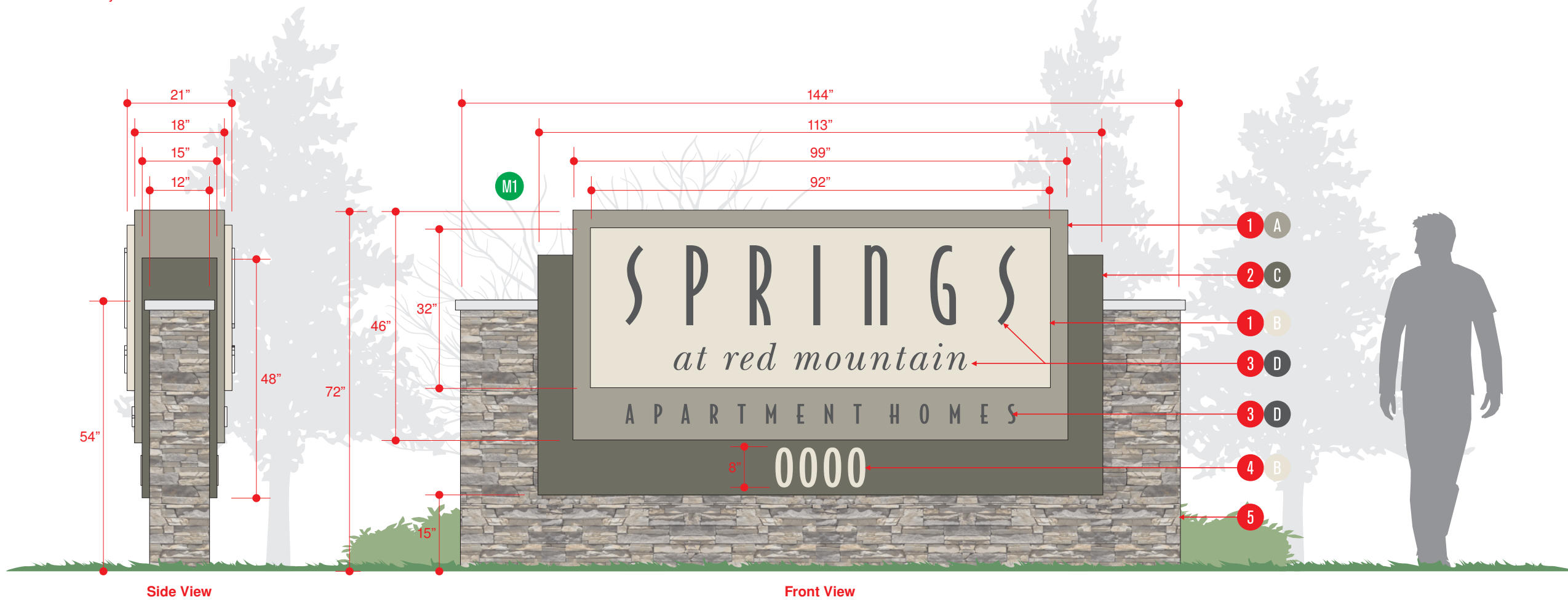
Name _____

Title _____

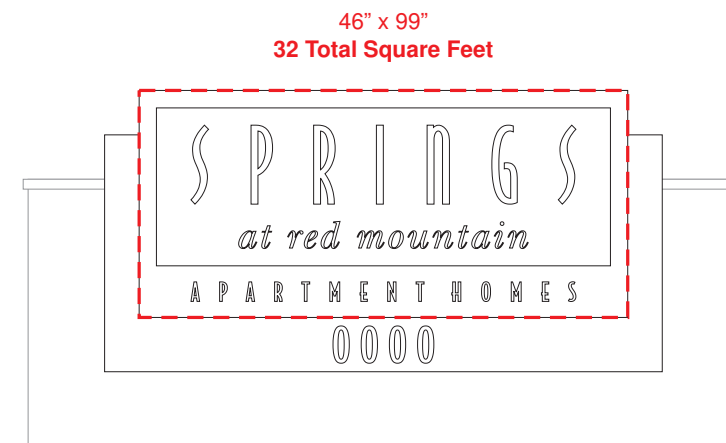
Date _____




This is an original unpublished drawing, created by Sign Systems, Inc. It is submitted for your use in connection with the project being planned for by Sign Systems, Inc. It is not to be shown to anyone outside of your organization, nor is it to be used, reproduced, copied, or exhibited in any other fashion without expressed consent from an authorized Sign Systems, Inc representative. All or any part of this design, excluding registered trademarks, remains the property of Sign Systems, Inc. Any use that is not authorized may result in a design fee to be determined by Sign Systems, Inc.

32 Square Foot Monument
Double Sided Internally Illuminated



Simulated Illumination

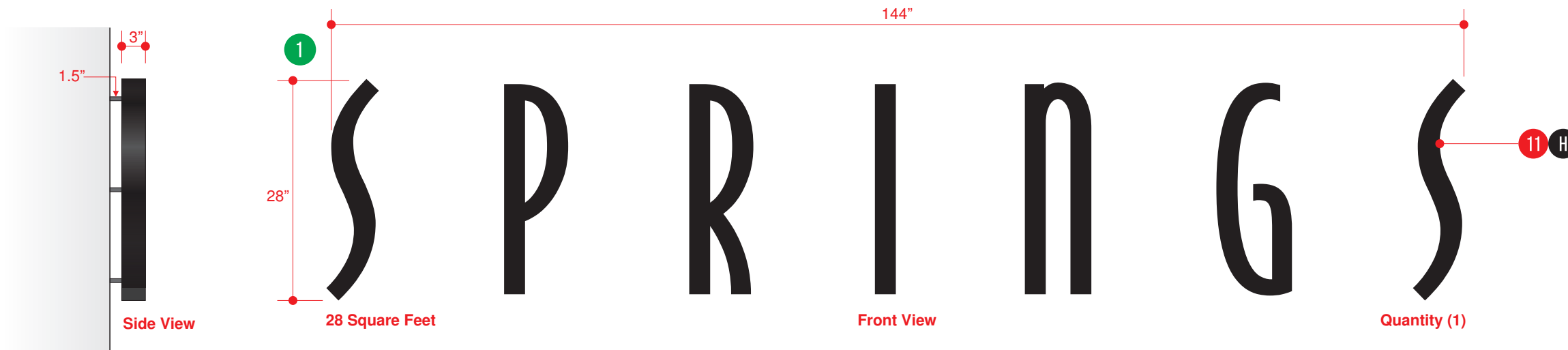


CLIENT	SPRINGS APARTMENTS
	A
CONTACT	
	Mesa, AZ
SITE	
FILE	Sales Rep CJ Hines
	File Name springs RED MTN
CLIENT REVIEW	Design TDH
	Draft: 11.15.18
	Rev 1:
	Rev 2:
	Rev 3:
	Rev 4:
	Rev 5:
	Rev 6:
	<input type="checkbox"/> Approved
	<input type="checkbox"/> Approved as Noted
	<input type="checkbox"/> Revise & Re-submit
	Name _____
	Title _____
	Date _____
	<small>This is an original unpublished drawing, created by Sign Systems, Inc. It is submitted for your use in connection with the project being planned for by Sign Systems, Inc. It is not to be shown to anyone outside of your organization, nor is it to be used, reproduced, copied, or exhibited in any other fashion without expressed consent from an authorized Sign Systems, Inc representative. All or any part of this design, excluding registered trademarks, remains the property of Sign Systems, Inc. Any use that is not authorized may result in a design fee to be determined by Sign Systems, Inc.</small>
	  

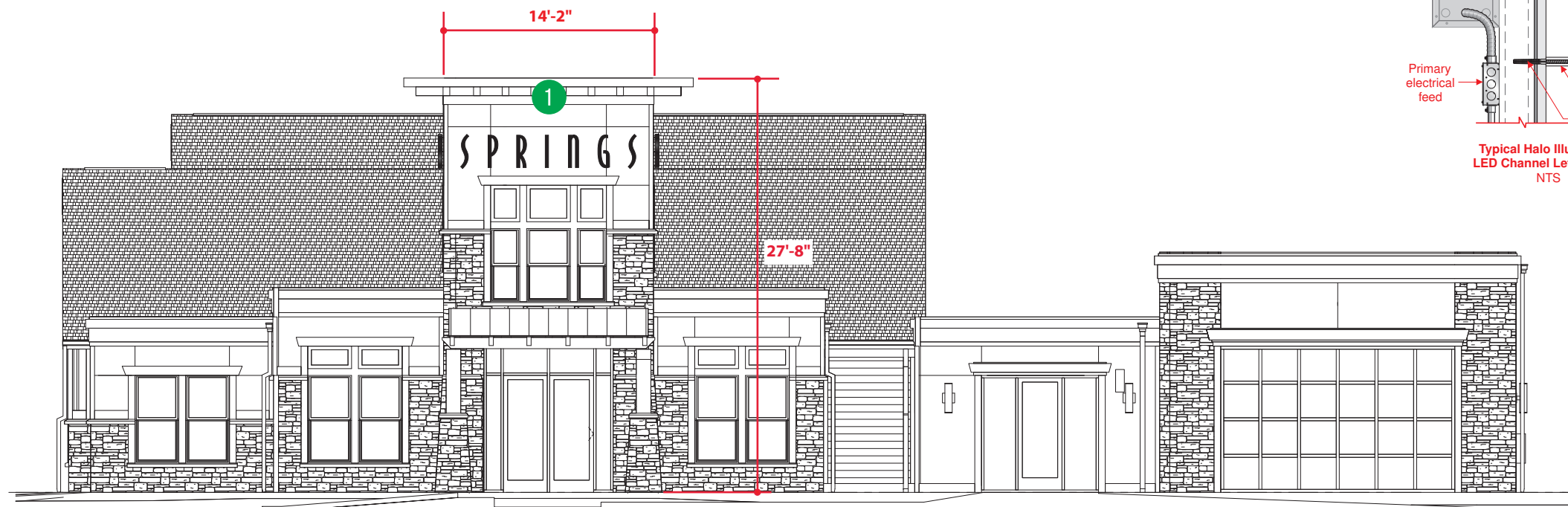
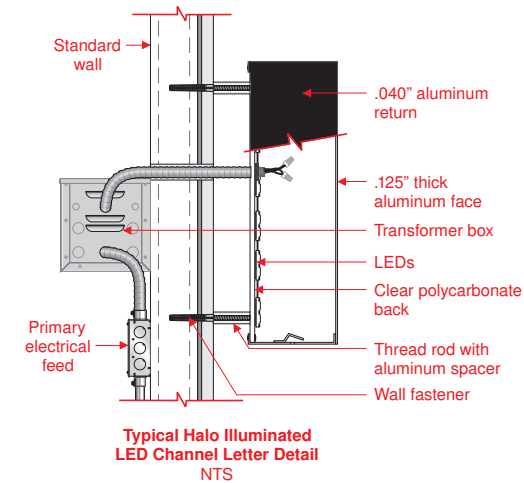




Clubhouse
Front Elevation Halo Illuminated Channel Letters



*Proposed wall-mounted clubhouse tower sign to exceed 50% of the width of the building elevation wall upon which the attached sign is placed. Proposed wall-mounted clubhouse tower sign is to be 84.71% of the total width of the building elevation wall upon which the attached sign is placed.



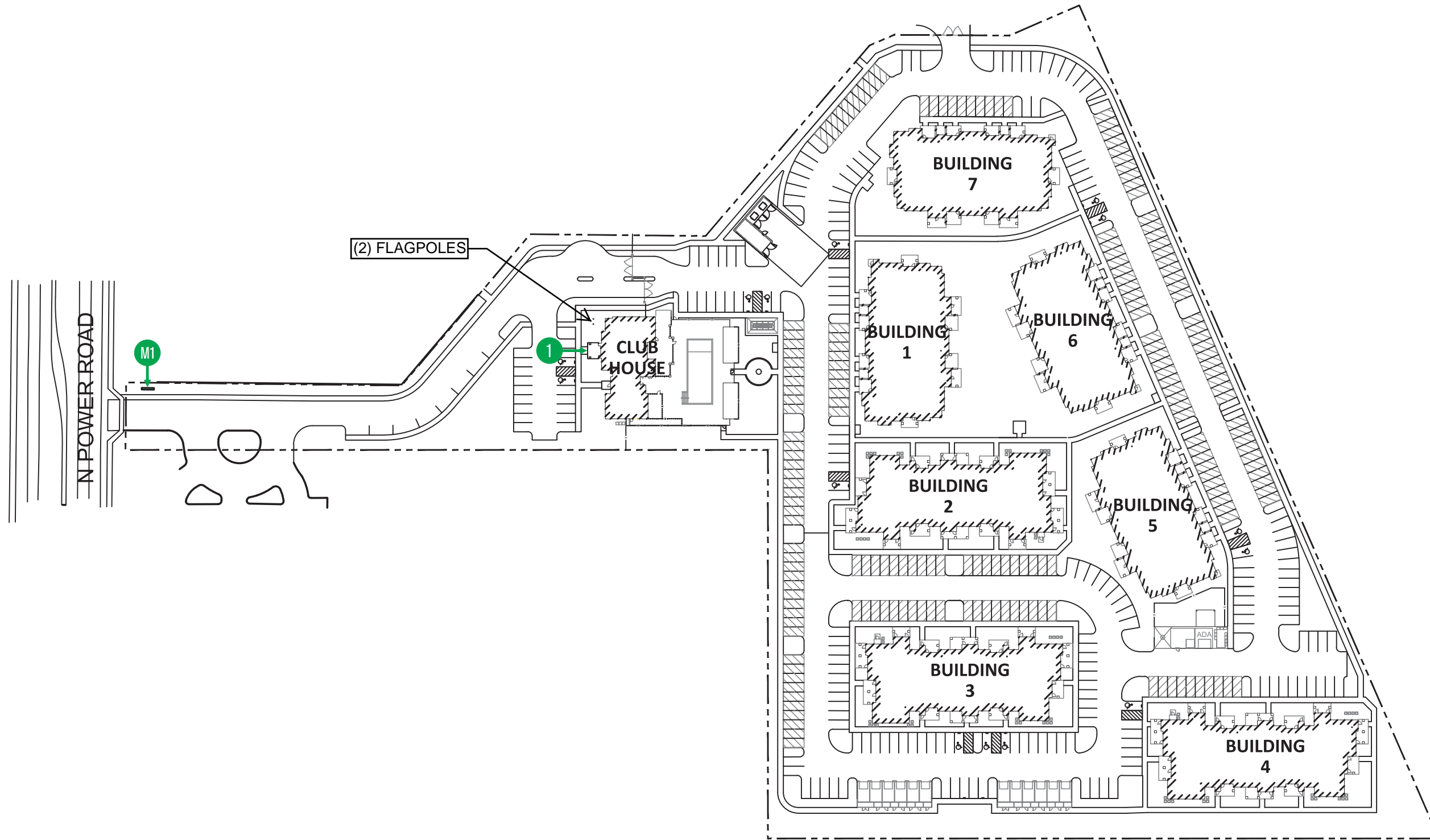
Front Elevation

*Building elevations shown in this sign package are for reference only for showing building signage locations. Actual building elevations materials are noted and shown in the associated Springs at Red Mountain PAD

CLIENT	SPRINGS APARTMENTS	
	CONTACT	A
	SITE	Mesa, AZ
	FILE	Sales Rep CJ Hines
		File Name springs RED MTN
		Design TDH
Draft: 11.15.18		
	Rev 1: 12.21.18	
	Rev 2:	
	Rev 3:	
	Rev 4:	
	Rev 5:	
	Rev 6:	
CLIENT REVIEW	<input type="checkbox"/> Approved <input type="checkbox"/> Approved as Noted <input type="checkbox"/> Revise & Re-submit	
	Name	
	Title	
	Date	
This is an original unpublished drawing, created by Sign Systems, Inc. It is submitted for your use in connection with the project being planned for by Sign Systems, Inc. It is not to be shown to anyone outside of your organization, nor is it to be used, reproduced, copied, or exhibited in any other fashion without expressed consent from an authorized Sign Systems, Inc representative. All or any part of this design, excluding registered trademarks, remains the property of Sign Systems, Inc. Any use that is not authorized may result in a design fee to be determined by Sign Systems, Inc.		



Site Plan



CLIENT
SPRINGS
 APARTMENTS

CONTACT
 A

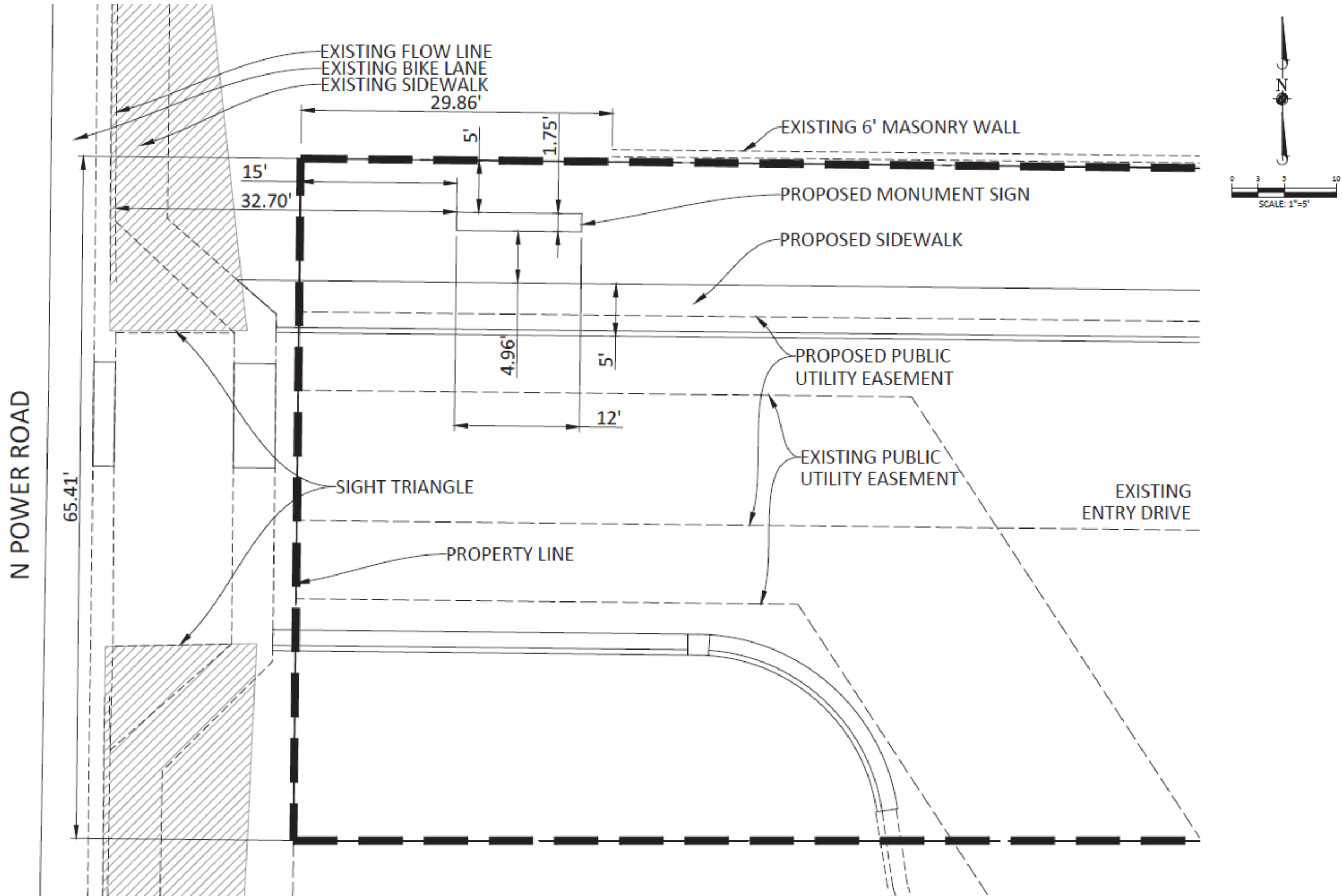
SITE
 Mesa, AZ

FILE
 Sales Rep
 CJ Hines
 File Name
 springs RED MTN
 Design
 TDH
 Draft: 11.15.18
 Rev 1: 12.21.18
 Rev 2:
 Rev 3:
 Rev 4:
 Rev 5:
 Rev 6:

CLIENT REVIEW
 Approved
 Approved as Noted
 Revise & Re-submit
 Name _____
 Title _____
 Date _____

This is an original unpublished drawing, created by Sign Systems, Inc. It is submitted for your use in connection with the project being planned for by Sign Systems, Inc. It is not to be shown to anyone outside of your organization, nor is it to be used, reproduced, copied, or exhibited in any other fashion without expressed consent from an authorized Sign Systems, Inc representative. All or any part of this design, excluding registered trademarks, remains the property of Sign Systems, Inc. Any use that is not authorized may result in a design fee to be determined by Sign Systems, Inc.





CLIENT
SPRINGS APARTMENTS

CONTACT
A

SITE
Mesa, AZ

FILE
Sales Rep
CJ Hines
File Name
springs RED MTN
Design
TDH
Draft: 11.15.18
Rev 1: 12.21.18
Rev 2:
Rev 3:
Rev 4:
Rev 5:
Rev 6:

CLIENT REVIEW

Approved
 Approved as Noted
 Revise & Re-submit

Name _____
 Title _____
 Date _____

This is an original unpublished drawing, created by Sign Systems, Inc. It is submitted for your use in connection with the project being planned for by Sign Systems, Inc. It is not to be shown to anyone outside of your organization, nor is it to be used, reproduced, copied, or exhibited in any other fashion without expressed consent from an authorized Sign Systems, Inc representative. All or any part of this design, excluding registered trademarks, remains the property of Sign Systems, Inc. Any use that is not authorized may result in a design fee to be determined by Sign Systems, Inc.

