

CITY OF MESA GENERAL NOTES

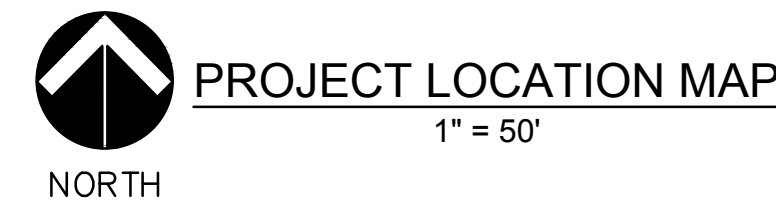
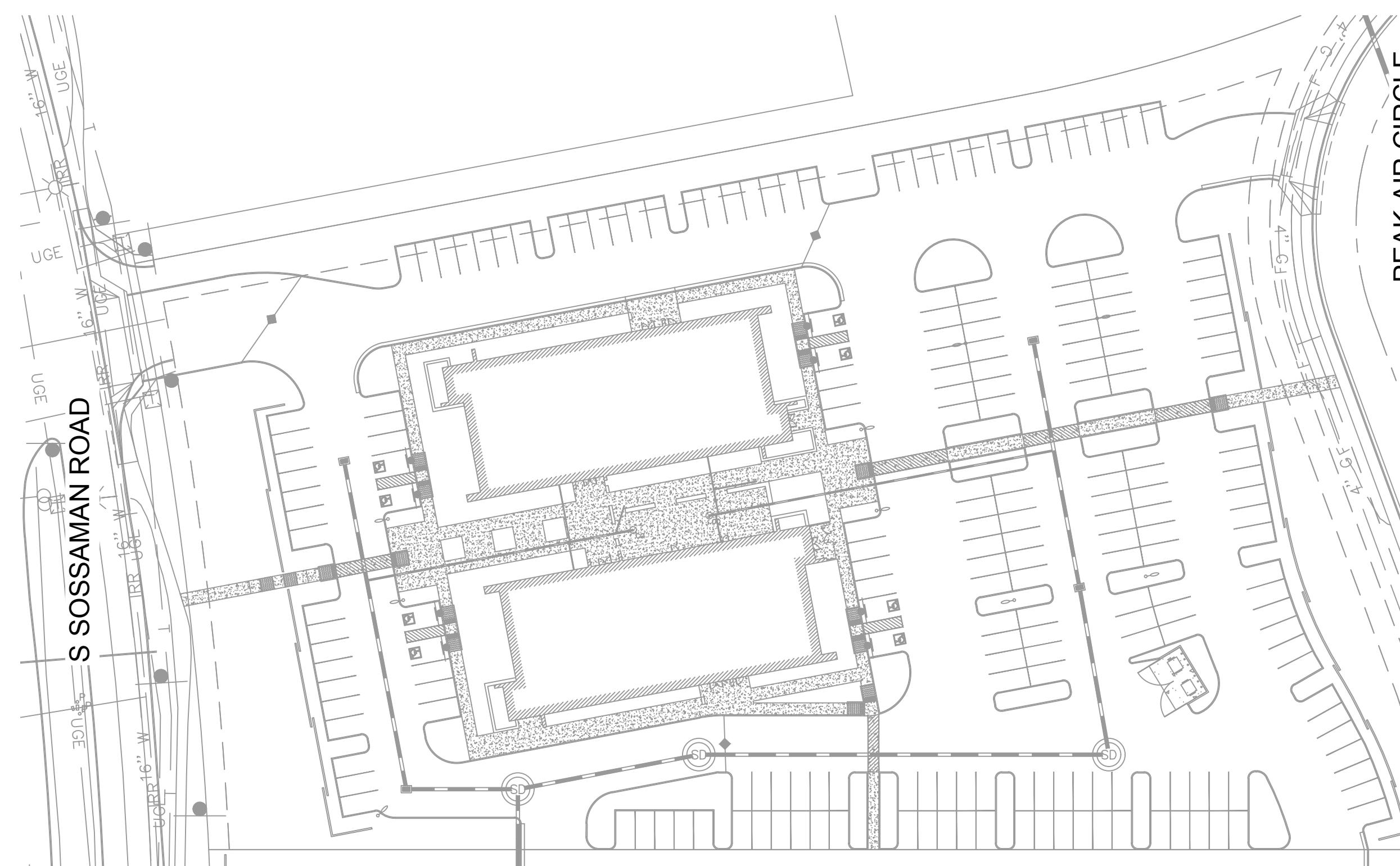
- 1. ALL WORK AND MATERIALS SHALL CONFORM TO CURRENT UNIFORM STANDARD SPECIFICATIONS AND DETAILS FOR PUBLIC WORKS CONSTRUCTION AS PUBLISHED BY THE MARICOPA ASSOCIATION OF GOVERNMENTS AND AS AMENDED BY THE CITY OF MESA. ALL WORK AND MATERIALS NOT IN CONFORMANCE WITH THESE AMENDED SPECIFICATIONS AND DETAILS ARE SUBJECT TO REMOVAL AND REPLACEMENT AT THE CONTRACTOR'S EXPENSE. THE INFORMATION SHOWN ON DRAWINGS CONCERNING THE TYPE AND LOCATION OF EXISTING UNDERGROUND UTILITIES IS APPROXIMATE AND HAS NOT BEEN INDEPENDENTLY VERIFIED BY THE ENGINEER OR THE ENGINEER'S AGENT. THE CONTRACTOR SHALL DETERMINE THE EXACT LOCATION OF ALL EXISTING UTILITIES BEFORE COMMENCING WORK, AND AGREES TO BE FULLY RESPONSIBLE FOR ANY AND ALL DAMAGES WHICH MAY OCCUR BY THE CONTRACTOR'S FAILURE TO EXACTLY LOCATE AND PRESERVE ANY AND ALL UNDERGROUND AND OVERHEAD UTILITIES.
A. CALL 602-263-1100 OR 811 FOR BLUE STAKE SERVICES.
B. CALL SALT RIVER POWER FOR POLE BRACING, ELECTRIC SERVICE OR CONSTRUCTION SCHEDULING AT 602-236-8888.
C. CALL CITY OF MESA ELECTRICAL FOR POLE BRACING, ELECTRICAL SERVICE OR CONSTRUCTION SCHEDULING AT 480-644-2251 WITHIN CITY OF MESA ELECTRICAL SERVICE TERRITORY (DOWNTOWN MESA).
D. WHEN EXCAVATING IN OR ADJACENT TO A CITY PARK OR AQUATIC FACILITY THE CONTRACTOR SHALL CONTACT AQUATICS AND PARKS MAINTENANCE AT 480-644-3097 TO REQUEST ASSISTANCE IN LOCATING UNDERGROUND UTILITY FACILITIES.
E. WHEN EXCAVATING IN OR ADJACENT TO LANDSCAPING WITHIN THE RIGHT-OF-WAY, THE CONTRACTOR SHALL CONTACT TRANSPORTATION FIELD OPERATIONS AT 480-644-3038 TO REQUEST ASSISTANCE IN LOCATING UNDERGROUND IRRIGATION FACILITIES.
3. THE CITY OF MESA HAS ADOPTED THE CITY OF PHOENIX 2007 TRAFFIC BARRICADE MANUAL. COPIES ARE AVAILABLE AT 1101 EAST JEFFERSON STREET, PHOENIX, ARIZONA. TELEPHONE 602-262-6235 OR http://phoenix.gov/streets/traffic/index.html. CITY OF MESA HAS ISSUED A SUPPLEMENT TO THE PHOENIX TRAFFIC BARRICADE MANUAL. COPIES ARE AVAILABLE AT DEVELOPMENT SERVICES, 55 N. CENTER ST., MESA, ARIZONA. TELEPHONE 480-644-2160 OR BOTH MANUALS ARE AVAILABLE ONLINE AT: http://www.mesaaz.gov/transportation/barricades.aspx
4. CONTRACTOR TO NOTIFY TRAFFIC OPERATIONS AT 480-644-3126 PRIOR TO SIGN REMOVAL AND WHEN READY TO PERMANENTLY RELOCATE SIGN.
5. CONTRACTOR TO OBTAIN ANY PERMITS REQUIRED UNLESS OTHERWISE INDICATED, AND COORDINATE ALL IRRIGATION DRY-UPS, RELOCATIONS, AND REMOVALS BY OTHERS.
6. CONTRACTOR SHALL POTHOLE EXISTING UTILITIES AHEAD OF CONSTRUCTION TO ALLOW FOR ANY NECESSARY ADJUSTMENTS IN GRADE LINE AND TO VERIFY PIPE MATERIALS FOR ORDERING THE APPROPRIATE TRANSITION AND TIE-IN FITTINGS THAT MAY BE REQUIRED.
7. THE CONTRACTOR IS RESPONSIBLE TO REMOVE ALL ABANDONED UTILITIES THAT INTERFERE WITH PROPOSED IMPROVEMENTS. THE CITY OF MESA UTILITIES DEPARTMENT LOCATING SECTION WILL ASSIST THE CONTRACTOR AS NEEDED, IN DETERMINING IF THE UTILITY (GAS, WATER, AND WASTEWATER ONLY) IS ABANDONED BY CALLING 480-644-4500.
8. PRIOR TO START OF CONSTRUCTION ON PRIVATE PROPERTY (EASEMENTS), THE CONTRACTOR SHALL GIVE THE OWNER SUFFICIENT TIME (MINIMUM 48 HOURS) TO REMOVE ANY ITEMS IN CONFLICT WITH CONSTRUCTION. THE CONTRACTOR SHALL ARRANGE TO REMOVE AND REPLACE ALL OTHER CONFLICTS AS REQUIRED.
9. THE CONTRACTOR SHALL COORDINATE WORK SCHEDULES TO PREVENT ANY CONFLICTING WORK CONDITIONS WITH THE CITY OF MESA UTILITY AND TRANSPORTATION CREWS.
10. THE CONTRACTOR IS ADVISED THAT A DUST CONTROL PERMIT AND A DUST CONTROL PLAN MAY BE REQUIRED BY THE MARICOPA COUNTY AIR QUALITY DEPARTMENT. IT SHALL BE THE CONTRACTOR'S RESPONSIBILITY TO OBTAIN THIS PERMIT, IF NECESSARY, AND COMPLY WITH ITS REQUIREMENTS. PRIOR TO CONSTRUCTION, THE CONTRACTOR SHALL PROVIDE A COPY OF THE DUST CONTROL PERMIT AND DUST CONTROL PLAN TO THE CITY FOR REVIEW.
11. INSPECTIONS SHALL BE PROVIDED BY THE CITY OF MESA. THE CONTRACTOR SHALL NOTIFY THE CITY INSPECTION DEPARTMENT AT LEAST 48 HOURS IN ADVANCE OF ANY CONSTRUCTION.
12. THE JOB SITE SHALL BE CLEANED OF ANY DEBRIS OR SPOIL RESULTING FROM THIS PROJECT AT THE COMPLETION OF CONSTRUCTION.
13. ALL EQUIPMENT AND MATERIALS NOT SHOWN OR SPECIFIED ON THE PLANS OR SPECIFICATIONS, BUT REQUIRED TO COMPLETE THIS PROJECT, SHALL BE SUPPLIED BY THE CONTRACTOR AS PART OF THIS CONTRACT WORK (NO ADDITIONAL COST TO THE CITY).
14. WHEREVER PAVEMENT REPLACEMENT PER MESA STD DETAIL M-19.04 OR MAG STD DETAIL 200 IS REFERRED TO WITHIN THESE PLANS, BACKFILLING SHALL BE PER THE CITY OF MESA STREET TRENCH BACKFILLING AND PAVEMENT REPLACEMENT POLICY STATEMENT, REVISED SEPTEMBER 29, 1999.
15. FOR PURPOSES OF PAVEMENT PER MAG STD DETAIL 200 OR MESA STD DETAIL M-19.04, INTERSECTIONS ARE DEFINED BY THE CURB RETURNS IN ALL DIRECTIONS.
16. ANY SURVEY MARKERS DISTURBED OR DAMAGED BY THE CONTRACTOR SHALL BE REPLACED IN KIND BY A REGISTERED LAND SURVEYOR AT NO ADDITIONAL COST TO THE CITY.
17. ALL EXISTING PAVEMENT MARKINGS, SIGNS, AND SIGNAL EQUIPMENT THAT ARE NOT PART OF THIS PROJECT BUT NEED TO BE REMOVED, REPLACED, RELOCATED, OR REPAIRED BECAUSE OF CONTRACTOR'S WORK WILL BE DONE AT THE CONTRACTOR'S EXPENSE.
18. THE CONTRACTOR IS ADVISED THAT DAMAGE TO ANY PUBLIC SERVICES OR SYSTEMS AS A RESULT OF THIS PROJECT SHALL BE REPAIRED BY THE CONTRACTOR AND INSPECTED BY THE CITY INSPECTOR. DEPENDING ON DAMAGES, ALL REPAIRS SHALL BE DONE WITHIN 24 HOURS. THE CONTRACTOR IS ADVISED THAT ANY COSTS RELATED TO REPAIR OR REPLACEMENT OF DAMAGED PUBLIC SERVICES OR SYSTEMS AS A RESULT OF CONTRACTOR'S NEGLIGENCE SHALL BE BORNE BY THE CONTRACTOR.

WATER, WASTEWATER, AND STORM DRAIN NOTES (CITY OF MESA)

- 1. MATERIALS AND INSTALLATION OF WATER AND SEWER MAINS, WATER METERS AND SERVICE LINE CONNECTIONS SHALL CONFORM TO CURRENT CITY DETAILS, MESA AMENDMENTS TO MAG SPECIFICATIONS, AND THE APPROVED PRODUCTS LIST. SEE BELOW FOR APPROVED PRODUCT LISTS FOR WATER AND WASTEWATER.
https://www.mesaaz.gov/home/showdocument?id=33740
https://www.mesaaz.gov/home/showdocument?id=24019
2. IN ACCORDANCE WITH ARIZONA ADMINISTRATIVE CODE (A.A.C.) R18-4-213, ALL MATERIALS WHICH MAY COME INTO CONTACT WITH DRINKING WATER SHALL CONFORM TO NATIONAL SANITATION FOUNDATION (NSF) STANDARDS 60, 61, AND 372 AND SHALL BE LEAD-FREE AS DEFINED IN A.A.C. R18-5-504 AND R18-4-101.
3. THE CONTRACTOR IS RESPONSIBLE TO PROVIDE ALL NECESSARY FITTINGS AND ADAPTERS REQUIRED TO CONNECT DIFFERENT TYPES OF WATER MAIN MATERIALS.
4. PER MESA AMENDMENTS 610.4.2 ALL MINOR VERTICAL OR HORIZONTAL DEFLECTIONS SHALL BE BY PIPE JOINT DEFLECTION UNLESS OTHERWISE NOTED. PIPE JOINT DEFLECTION SHALL NOT EXCEED 3 DEGREES OR 2/3 OF PIPE MANUFACTURER'S RECOMMENDATIONS WHICHEVER IS LESS.
5. PER MAG AND MESA AMENDMENTS 610.11 ALL WATER LINE TESTS SHALL BE COMPLETED SO THAT NO EXISTING LINES, EXISTING VALVES, OR NEWLY INSTALLED VALVES WHICH ARE CONNECTED TO THE OPERATING WATER SYSTEM ARE INCLUDED IN THE TESTS. ALLOWABLE TIMEFRAMES SHOULD FOLLOW MESA AMENDMENTS TO MAG AND MUST BE COORDINATED WITH THE CITY INSPECTOR. FOR A DAYTIME TIE-IN, THE CONTRACTOR SHALL COMPLETE ALL WORK NECESSARY TO RESTORE UTILITY SERVICE AND FULLY OPEN THE TIE-IN AREA TO TRAFFIC WITHIN THE TIME ALLOWED.
6. WATER LINE FLUSHING, PRESSURE TESTING, AND DISINFECTION SHALL BE COMPLETED PER MAG SPECIFICATION SECTION 611. MESA AMENDMENTS TO MAG SPECIFICATION SECTION 611, AND AWWA C651 (CURRENT VERSION). SOURCE WATER TO BE USED FOR FILLING, FLUSHING AND TESTING SHALL BE OBTAINED FROM A HYDRANT METER ORDERED THROUGH PERMIT SERVICES, AND SET BY CITY OF MESA WATER RESOURCES OR REPAIRED PIPELINE AS OUTLINED IN THE MESA AMENDMENTS TO MAG SECTION 610.11 AND 611.
7. WATER METERS, METER BOXES, LIDS, ETC. IN CONFLICT WITH NEW CONSTRUCTION SHALL BE RELOCATED PER CITY OF MESA STANDARD DETAIL M-49 BY THE CONTRACTOR. THE RELOCATION SHALL INCLUDE ALL MATERIALS NECESSARY TO RECONNECT THE METER TO THE CITY DISTRIBUTION SYSTEM SERVICE LINE EXTENSIONS. IF APPROVED IN WRITING BY MESA WATER RESOURCES DEPARTMENT, SHALL CONFORM TO MESA STANDARD DETAIL M-49. WHEN SERVICE LINE EXTENSIONS ARE APPROVED PER MESA STANDARD DETAIL M-49, SERVICE LINE COUPLINGS SHALL NOT BE PLACED UNDER ROADWAY SURFACES, CONCRETE GUTTERS, CURB AND GUTTER, OR CONCRETE DRIVEWAYS.
9. VALVES SHALL BE INSTALLED WITH VALVE BOX AND COVER PER MAG STD DETAILS 391-1, TYPE C WITH A DEEP-SKIRTED LID (4-INCHES MINIMUM) AS NOTED IN THE APPROVED PRODUCTS LIST.
10. ALL WATER LINE ABANDONMENT CUT AND PLUGS FOR ACTIVE LINES SHALL CONFORM TO THE FOLLOWING:
A. 12" AND SMALLER DIAMETER PER MESA STANDARD DETAIL M-50.
B. 16" DIAMETER PER M.A.G. STANDARD DETAIL 390, TYPE B.
C. GREATER THAN 16" DIAMETER, AS DESIGNED PER PLAN.
11. LIME-TREATED AGGREGATE BASE COURSE (ABC) MATERIAL, RECLAIMED CONCRETE MATERIAL (RCM), AND RECLAIMED ASPHALT PAVEMENT (RAP) MATERIALS ARE PROHIBITED FOR USE IN THE PIPE EMBEDMENT ZONE (BEDDING, HAUNCHING, INITIAL BACKFILL) FOR WATERLINE CONSTRUCTION PER MESA AMENDMENTS 601.4.2.
12. PER MESA AMENDMENTS 610.11, APPLICATIONS TO THE CITY OF MESA ENGINEERING INSPECTOR AND REVIEWED AND APPROVED BY THE WATER RESOURCE DEPARTMENT FOR WATER SYSTEM SHUTDOWN FOR THE PURPOSES OF CONSTRUCTION-RELATED ACTIVITIES SHALL BE MADE A MINIMUM OF FIVE (5) BUSINESS DAYS PRIOR TO THE SCHEDULED SHUTDOWN DATE. THE REQUEST SHALL INCLUDE PRIMARY AND SECONDARY VALVE NUMBERS, WHETHER A TEST SHUTDOWN IS REQUESTED, AND THE DATE AND DURATION OF THE REQUESTED SHUTDOWN. PER MAG 610.11, THE CITY OF MESA DOES NOT GUARANTEE A COMPLETE SHUTDOWN.

PRELIMINARY GRADING & DRAINAGE PLAN
SKYBRIDGE ARIZONA LOT 116B

A PORTION OF SECTION 32, TOWNSHIP 1 SOUTH, RANGE 7 EAST OF THE GILA AND SALT RIVER MERIDIAN, MARICOPA COUNTY, ARIZONA



ENGINEER:

ARDURRA
ATTN: JOHN BISHOP, PM
63 E MAIN ST, STE 502
MESA, AZ 85201
PHONE: 480-539-7407

PROJECT MANAGER: JOHN BISHOP
EMAIL: JEBISHOP@ARDURRA.COM

PROJECT ENGINEER: STEVE LEWIS
EMAIL: SLEWIS@ARDURRA.COM

DEVELOPER/OWNER:

MESA SKYBRIDGE, LLC
ATTN: WILL MOSELEY
2415 E CAMELBACK RD, STE 700
PHOENIX, ARIZONA 85016
PHONE: 602-508-3561
WILL.MOSELEY@SKYBRIDGEDEVELOPMENTS.COM

ARCHITECT:

ADM GROUP, INC.
ATTN: GLENN KLIPFEL
2100 WEST 15TH STREET,
TEMPE, AZ 85281
PHONE: 480.285.3832
EMAIL: GKLIPFEL@ADMGROUPINC.COM

SITE INFORMATION AND PROJECT DATA

ADDRESS: 6613 SOUTH SOSSAMAN ROAD, MESA, AZ 85212
ASSESSOR'S NUMBER(S): APN 304-36-002C
AREA: 180,831.14 SF (4.151 ACRES)
ZONING: LI

UTILITIES/SERVICE PROVIDERS

Table listing utility providers for Sewer, Water, Gas, Electricity, Telephone, Police, Fire, and Solid Waste, including City of Mesa and Mesa Fire Department.

SHEET INDEX

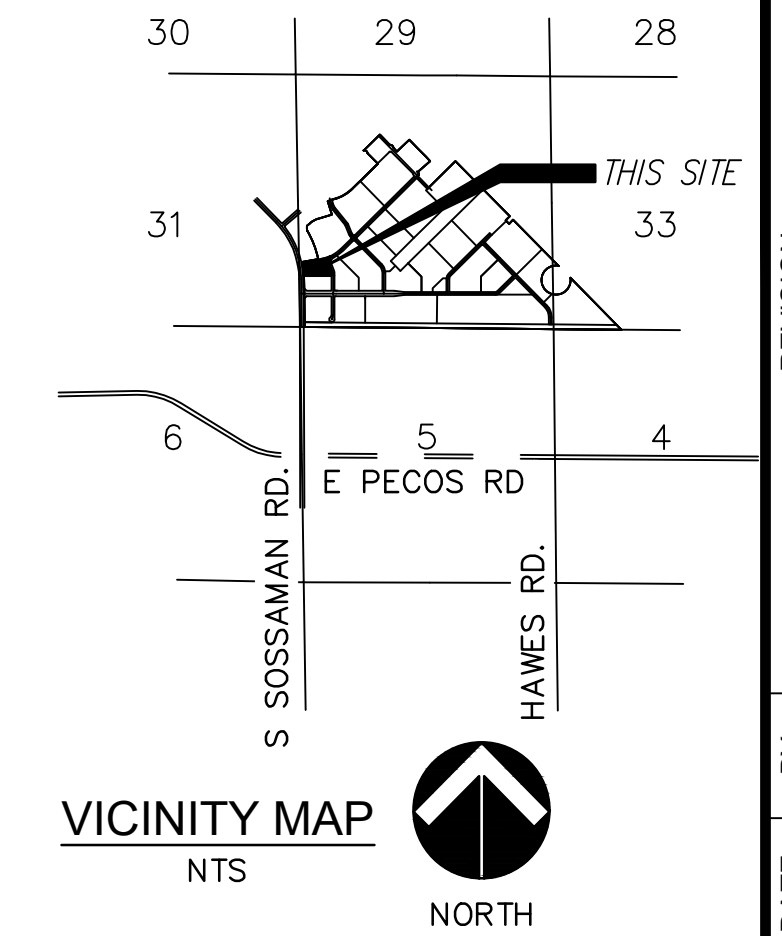
Table with columns: SHEET NO., DWG NO., SHEET. Row 1: 1, CV01, COVER SHEET. Row 2: 2, PGD01, PRELIMINARY GRADING & DRAINAGE PLAN.

LEGEND

Legend table defining symbols for Proposed Contour Line, Existing Contour Line, Proposed Finished Grade Elevation, Existing Ground Elevation, Sawcut Line, Property Line, Easement/Building Setback Line, Section Line, Right of Way, Existing Overhead Electric, Existing Fence, Existing Water Line, Existing Sewer Line, Existing Underground Electric, Existing Storm Drain, Existing Telephone Service, Existing Gas Line, Property Corner, Existing Water Meter, Existing Sewer Manhole, Existing Storm Drain Manhole, Existing Fire Hydrant, Existing Water Valve, Existing Pedestal, Existing Power Pole, Existing Sign, Existing Overhead Light.

CITY OF MESA APPROVAL

SIGNATURE DATE



BENCHMARKS:

BENCHMARK NO. 1
SOSSAMAN ROAD & GERMANN ROAD
BRASS TAG NORTHWEST CORNER IN BRIDGE
(NAVD88) ELEVATION = 1356.84
N=829154.80
E=775618.91

BENCHMARK NO. 2
SIGNAL BUTTE ROAD AND WARNER ROAD
BRASS TAG ON TOP OF CURB AT
NORTHEAST CORNER
(NAVD88) ELEVATION = 1453.68
N=849927.63
E=796601.80

BENCHMARK NO. 3
MERIDIAN ROAD AND WARNER ROAD
BRASS TAG ON TOP OF CURB AT
NORTHWEST CORNER
(NAVD88) ELEVATION = 1481.30
N=849854.30
E=801754.48

BASIS OF BEARING:

FOR THIS PROJECT IS S89°29'18"E FOR THE SOUTH LINE OF THE SOUTHWEST QUARTER OF SECTION 32, TOWNSHIP 1 SOUTH, RANGE 7 EAST OF THE GILA & SALT RIVER MERIDIAN AS CALCULATED FROM A PLSS SUBDIVISION RECORD OF SURVEY MARICOPA COUNTY GEODETIC DENSIFICATION AND CADASTRAL SURVEY RECORDED IN BOOK 609, PAGE 29, MARICOPA COUNTY RECORDS.

DRAINAGE STATEMENT:

- A. PROJECT SITE LOCATED IN ZONE D.
B. RETENTION PROVIDED IS FOR 100-YEAR, 2-HOUR EVENT AND IS PROVIDED FOR IN THE SOUTH DETENTION BASIN LOCATED WITHIN SKYBRIDGE ARIZONA.
C. EXTREME STORM OUTFALLS THE SITE AT A STORM GRATE INTERIOR TO THE SITE AT AN ELEVATION OF 1349.50.

ESTIMATE EARTHWORK:

CUT = 3,176 CY
FILL = 8,303 CY
NET = 5,127 CY (FILL)

ABOVE NUMBERS DO NOT REFLECT SHRINK/SWELL, PRE-COMPACTION, OR LOSSES DUE TO OVER EXCAVATION.

FLOOD PLAIN CERTIFICATION

PER FEMA FLOOD INSURANCE RATE MAP NO. 04013C2770L, DATED OCTOBER 16, 2013, THE SUBJECT PROPERTY IS LOCATED IN ZONE D. ZONE D IS DESCRIBED AS: AREAS OF UNDETERMINED FLOOD HAZARD

RETENTION CALCULATIONS:

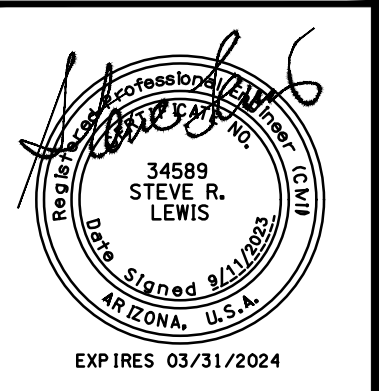
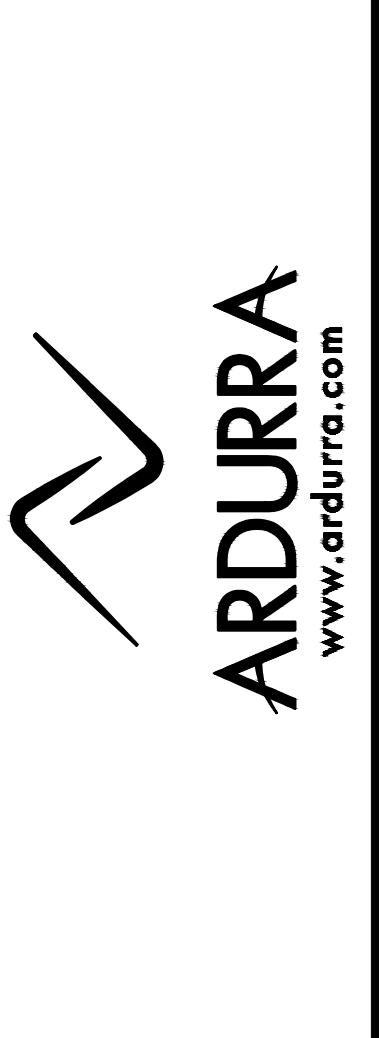
ONSITE RETENTION/DETENTION IS NOT REQUIRED ON PARCEL 118. THE 100-YEAR, 2-HOUR STORM EVENT WILL BE DIRECTED THE DETENTION BASIN SOUTH PER THE PHASE 1 DRAINAGE REPORT (REV 4C).

RETENTION CALCULATION:

Retention calculation equations: Vr = C * P / 12 * A, Cw = 0.79, P = 2.2", A = 180,831.14 SF, Vr = 26,205 CF = 0.602 AC-FT, Vr = VOLUME PROVIDED IN DETENTION BASIN SOUTH



REVISION table with columns: NO., DATE, BY.

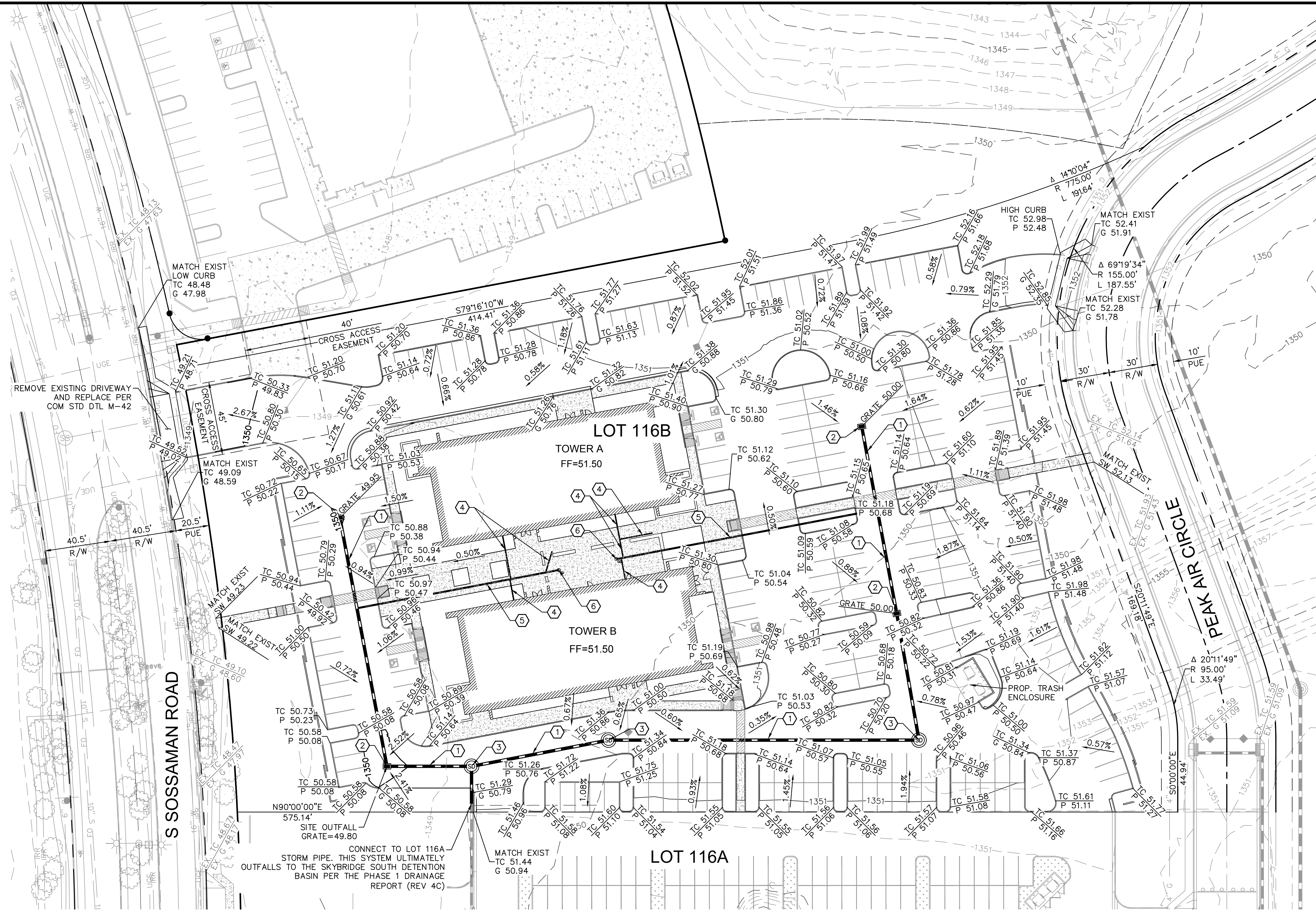


Project title block: SKYBRIDGE ARIZONA LOT 116B, 6613 SOUTH SOSSAMAN ROAD, PRELIMINARY GRADING & DRAINAGE PLAN, COVER SHEET. Includes DWG: CV01, SHEET 1 OF 2, and job details.

FILE: J:\2023 Jobs\223155 - Skybridge Arizona MP parcel 116B\CAD Files\Sheets_Preliminary Grading & Drainage\Plan01-223155-PGD-CV01.dwg

DATE: Sep 08, 2023

DATE: Sep 11, 2023 FILE: J:\2023 Jobs\223155 - Skybridge Arizona MP parcel 116\CAD Files\Sheets_Preliminary Grading & Drainage Plan\02-223155-PGD-PGD01.dwg

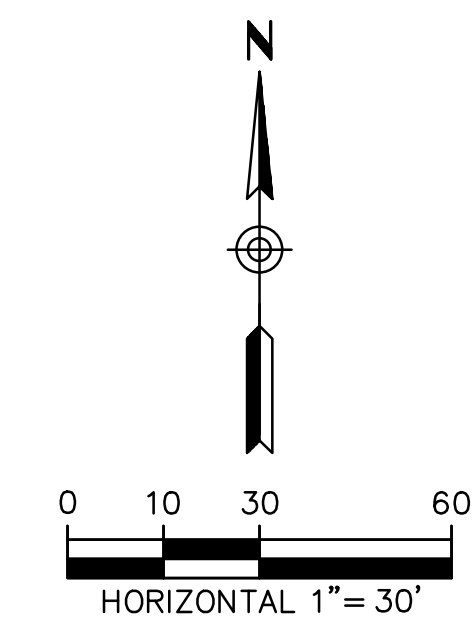


CONNECT TO LOT 116A STORM PIPE. THIS SYSTEM ULTIMATELY OUTFALLS TO THE SKYBRIDGE SOUTH DETENTION BASIN PER THE PHASE 1 DRAINAGE REPORT (REV 4C)

NOTE: REFER TO PMT22-01218 FOR IMPROVEMENTS CURRENTLY BEING CONSTRUCTED ON THE HOTEL SITE ON PARCEL 116A TO THE SOUTH.

NOTE: REFER TO PMT21-12397 FOR IMPROVEMENTS CURRENTLY BEING CONSTRUCTED IN PEAK AIR CIRCLE.

STORM DRAIN NOTES	
NO.	DESCRIPTION
①	INSTALL 18" RCP STORM DRAIN PIPE
②	CATCH BASIN PER MAG STD DTL 535
③	STORM DRAIN MANHOLE PER MAG STD DTLS 520 & 522
④	INSTALL 4" HDPE STORM DRAIN PIPE
⑤	INSTALL 8" HDPE STORM DRAIN PIPE
⑥	INSTALL STORM DRAIN CLEANOUT



DWG: PGD01	JOB NO.: 223155 DESIGN BY: DN DRAWN BY: EO CHECKED: SL DATE: 09/11/2023	REVISION NO. DATE BY	SKYBRIDGE ARIZONA LOT 116B 6613 SOUTH SOSSAMAN ROAD PRELIMINARY GRADING & DRAINAGE PLAN	MESA, ARIZONA MARICOPA COUNTY

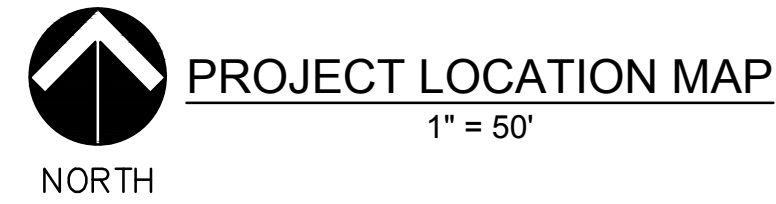
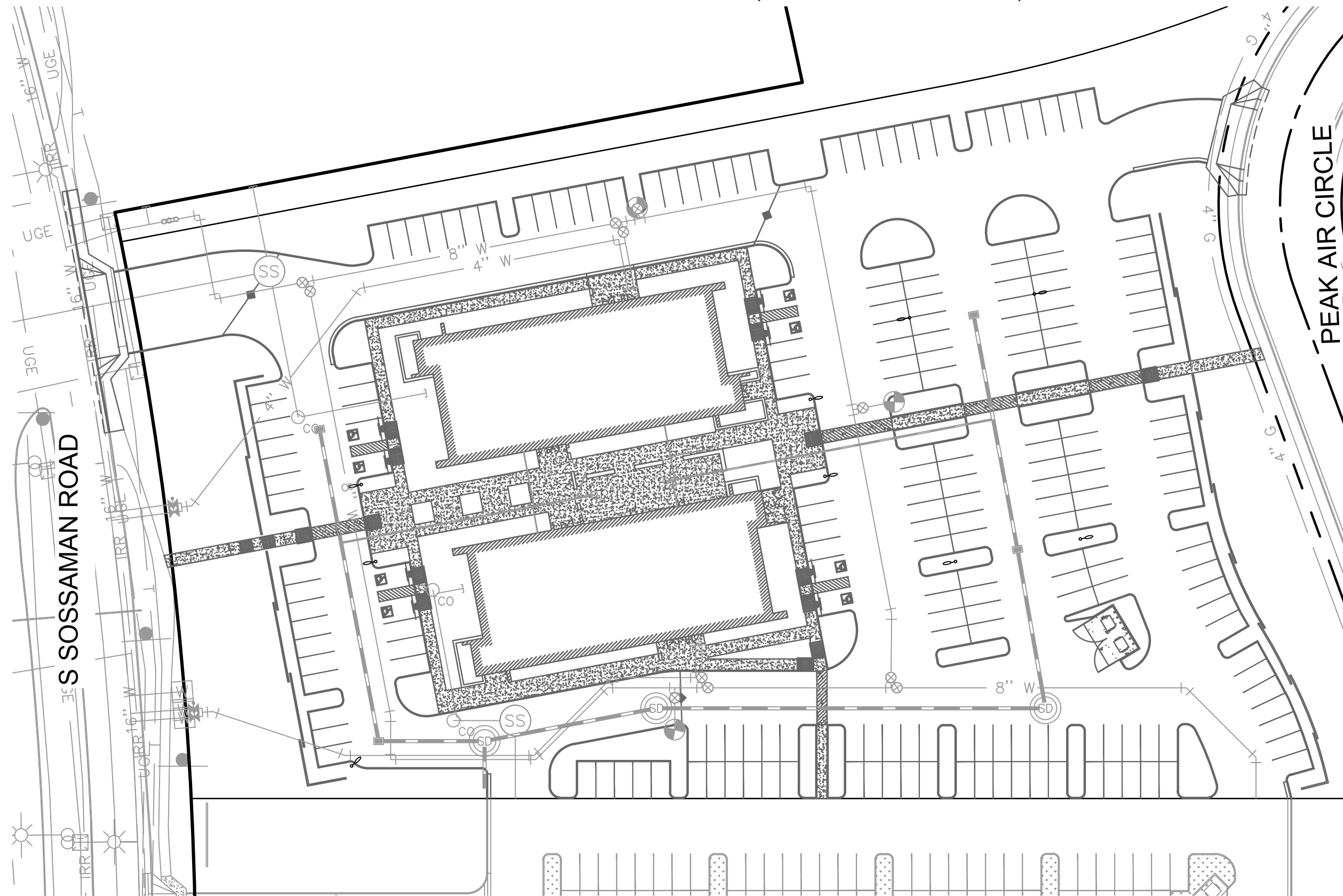
CITY OF MESA GENERAL NOTES

- 1. ALL WORK AND MATERIALS SHALL CONFORM TO CURRENT UNIFORM STANDARD SPECIFICATIONS AND DETAILS FOR PUBLIC WORKS CONSTRUCTION AS PUBLISHED BY THE MARICOPA ASSOCIATION OF GOVERNMENTS AND AS AMENDED BY THE CITY OF MESA. ALL WORK AND MATERIALS NOT IN CONFORMANCE WITH THESE AMENDED SPECIFICATIONS AND DETAILS ARE SUBJECT TO REMOVAL AND REPLACEMENT AT THE CONTRACTOR'S EXPENSE. THE INFORMATION SHOWN ON DRAWINGS CONCERNING THE TYPE AND LOCATION OF EXISTING UNDERGROUND UTILITIES IS APPROXIMATE AND HAS NOT BEEN INDEPENDENTLY VERIFIED BY THE ENGINEER OR THE ENGINEER'S AGENT. THE CONTRACTOR SHALL DETERMINE THE EXACT LOCATION OF ALL EXISTING UTILITIES BEFORE COMMENCING WORK, AND AGREES TO BE FULLY RESPONSIBLE FOR ANY AND ALL DAMAGES WHICH MAY OCCUR BY THE CONTRACTOR'S FAILURE TO EXACTLY LOCATE AND PRESERVE ANY AND ALL UNDERGROUND AND OVERHEAD UTILITIES.
A. CALL 602-263-1100 OR 811 FOR BLUE STAKE SERVICES.
B. CALL SALT RIVER POWER FOR POLE BRACING, ELECTRIC SERVICE OR CONSTRUCTION SCHEDULING AT 602-236-8888.
C. CALL CITY OF MESA ELECTRICAL FOR POLE BRACING, ELECTRICAL SERVICE OR CONSTRUCTION SCHEDULING AT 480-644-2251 WITHIN CITY OF MESA ELECTRICAL SERVICE TERRITORY (DOWNTOWN MESA).
D. WHEN EXCAVATING IN OR ADJACENT TO A CITY PARK OR AQUATIC FACILITY THE CONTRACTOR SHALL CONTACT AQUATICS AND PARKS MAINTENANCE AT 480-644-3097 TO REQUEST ASSISTANCE IN LOCATING UNDERGROUND UTILITY FACILITIES.
E. WHEN EXCAVATING IN OR ADJACENT TO LANDSCAPING WITHIN THE RIGHT-OF-WAY, THE CONTRACTOR SHALL CONTACT TRANSPORTATION FIELD OPERATIONS AT 480-644-3038 TO REQUEST ASSISTANCE IN LOCATING UNDERGROUND IRRIGATION FACILITIES.
3. THE CITY OF MESA HAS ADOPTED THE CITY OF PHOENIX 2007 TRAFFIC BARRICADE MANUAL. COPIES ARE AVAILABLE AT 1101 EAST JEFFERSON STREET, PHOENIX, ARIZONA. TELEPHONE 602-262-6235 OR http://phoenix.gov/streets/traffic/index.html. CITY OF MESA HAS ISSUED A SUPPLEMENT TO THE PHOENIX TRAFFIC BARRICADE MANUAL. COPIES ARE AVAILABLE AT DEVELOPMENT SERVICES, 55 N. CENTER ST., MESA, ARIZONA. TELEPHONE 480-644-2160 OR BOTH MANUALS ARE AVAILABLE ONLINE AT: http://www.mesaaz.gov/transportation/barricades.aspx
4. CONTRACTOR TO NOTIFY TRAFFIC OPERATIONS AT 480-644-3126 PRIOR TO SIGN REMOVAL AND WHEN READY TO PERMANENTLY RELOCATE SIGN.
5. CONTRACTOR TO OBTAIN ANY PERMITS REQUIRED UNLESS OTHERWISE INDICATED, AND COORDINATE ALL IRRIGATION DRY-UPS, RELOCATIONS, AND REMOVALS BY OTHERS.
6. CONTRACTOR SHALL POTHOLE EXISTING UTILITIES AHEAD OF CONSTRUCTION TO ALLOW FOR ANY NECESSARY ADJUSTMENTS IN GRADE LINE AND TO VERIFY PIPE MATERIALS FOR ORDERING THE APPROPRIATE TRANSITION AND TIE-IN FITTINGS THAT MAY BE REQUIRED.
7. THE CONTRACTOR IS RESPONSIBLE TO REMOVE ALL ABANDONED UTILITIES THAT INTERFERE WITH PROPOSED IMPROVEMENTS. THE CITY OF MESA UTILITIES DEPARTMENT LOCATING SECTION WILL ASSIST THE CONTRACTOR AS NEEDED, IN DETERMINING IF THE UTILITY (GAS, WATER, AND WASTEWATER ONLY) IS ABANDONED BY CALLING 480-644-4500.
8. PRIOR TO START OF CONSTRUCTION ON PRIVATE PROPERTY (EASEMENTS), THE CONTRACTOR SHALL GIVE THE OWNER SUFFICIENT TIME (MINIMUM 48 HOURS) TO REMOVE ANY ITEMS IN CONFLICT WITH CONSTRUCTION. THE CONTRACTOR SHALL ARRANGE TO REMOVE AND REPLACE ALL OTHER CONFLICTS AS REQUIRED.
9. THE CONTRACTOR SHALL COORDINATE WORK SCHEDULES TO PREVENT ANY CONFLICTING WORK CONDITIONS WITH THE CITY OF MESA UTILITY AND TRANSPORTATION CREWS.
10. THE CONTRACTOR IS ADVISED THAT A DUST CONTROL PERMIT AND A DUST CONTROL PLAN MAY BE REQUIRED BY THE MARICOPA COUNTY AIR QUALITY DEPARTMENT. IT SHALL BE THE CONTRACTOR'S RESPONSIBILITY TO OBTAIN THIS PERMIT, IF NECESSARY, AND COMPLY WITH ITS REQUIREMENTS. PRIOR TO CONSTRUCTION, THE CONTRACTOR SHALL PROVIDE A COPY OF THE DUST CONTROL PERMIT AND DUST CONTROL PLAN TO THE CITY FOR REVIEW.
11. INSPECTIONS SHALL BE PROVIDED BY THE CITY OF MESA. THE CONTRACTOR SHALL NOTIFY THE CITY INSPECTION DEPARTMENT AT LEAST 48 HOURS IN ADVANCE OF ANY CONSTRUCTION.
12. THE JOB SITE SHALL BE CLEANED OF ANY DEBRIS OR SPOIL RESULTING FROM THIS PROJECT AT THE COMPLETION OF CONSTRUCTION.
13. ALL EQUIPMENT AND MATERIALS NOT SHOWN OR SPECIFIED ON THE PLANS OR SPECIFICATIONS, BUT REQUIRED TO COMPLETE THIS PROJECT, SHALL BE SUPPLIED BY THE CONTRACTOR AS PART OF THIS CONTRACT WORK (NO ADDITIONAL COST TO THE CITY).
14. WHEREVER PAVEMENT REPLACEMENT PER MESA STD DETAIL M-19.04 OR MAG STD DETAIL 200 IS REFERRED TO WITHIN THESE PLANS, BACKFILLING SHALL BE PER THE CITY OF MESA STREET TRENCH BACKFILLING AND PAVEMENT REPLACEMENT POLICY STATEMENT, REVISED SEPTEMBER 29, 1999.
15. FOR PURPOSES OF PAVEMENT PER MAG STD DETAIL 200 OR MESA STD DETAIL M-19.04, INTERSECTIONS ARE DEFINED BY THE CURB RETURNS IN ALL DIRECTIONS.
16. ANY SURVEY MARKERS DISTURBED OR DAMAGED BY THE CONTRACTOR SHALL BE REPLACED IN KIND BY A REGISTERED LAND SURVEYOR AT NO ADDITIONAL COST TO THE CITY.
17. ALL EXISTING PAVEMENT MARKINGS, SIGNS, AND SIGNAL EQUIPMENT THAT ARE NOT PART OF THIS PROJECT BUT NEED TO BE REMOVED, REPLACED, RELOCATED, OR REPAIRED BECAUSE OF CONTRACTOR'S WORK WILL BE DONE AT THE CONTRACTOR'S EXPENSE.
18. THE CONTRACTOR IS ADVISED THAT DAMAGE TO ANY PUBLIC SERVICES OR SYSTEMS AS A RESULT OF THIS PROJECT SHALL BE REPAIRED BY THE CONTRACTOR AND INSPECTED BY THE CITY INSPECTOR. DEPENDING ON DAMAGES, ALL REPAIRS SHALL BE DONE WITHIN 24 HOURS. THE CONTRACTOR IS ADVISED THAT ANY COSTS RELATED TO REPAIR OR REPLACEMENT OF DAMAGED PUBLIC SERVICES OR SYSTEMS AS A RESULT OF CONTRACTOR'S NEGLIGENCE SHALL BE BORNE BY THE CONTRACTOR.

WATER, WASTEWATER, AND STORM DRAIN NOTES (CITY OF MESA)

- 1. MATERIALS AND INSTALLATION OF WATER AND SEWER MAINS, WATER METERS AND SERVICE LINE CONNECTIONS SHALL CONFORM TO CURRENT CITY DETAILS, MESA AMENDMENTS TO MAG SPECIFICATIONS, AND THE APPROVED PRODUCTS LIST. SEE BELOW FOR APPROVED PRODUCT LISTS FOR WATER AND WASTEWATER.
https://www.mesaaz.gov/home/showdocument?id=33740
https://www.mesaaz.gov/home/showdocument?id=24019
2. IN ACCORDANCE WITH ARIZONA ADMINISTRATIVE CODE (A.A.C.) R18-4-213, ALL MATERIALS WHICH MAY COME INTO CONTACT WITH DRINKING WATER SHALL CONFORM TO NATIONAL SANITATION FOUNDATION (NSF) STANDARDS 60, 61, AND 372 AND SHALL BE LEAD-FREE AS DEFINED IN A.A.C. R18-5-504 AND R18-4-101.
3. THE CONTRACTOR IS RESPONSIBLE TO PROVIDE ALL NECESSARY FITTINGS AND ADAPTERS REQUIRED TO CONNECT DIFFERENT TYPES OF WATER MAIN MATERIALS.
4. PER MESA AMENDMENTS 610.4.2 ALL MINOR VERTICAL OR HORIZONTAL DEFLECTIONS SHALL BE BY PIPE JOINT DEFLECTION UNLESS OTHERWISE NOTED. PIPE JOINT DEFLECTION SHALL NOT EXCEED 3 DEGREES OR 2/3 OF PIPE MANUFACTURER'S RECOMMENDATIONS WHICHEVER IS LESS.
5. PER MAG AND MESA AMENDMENTS 610.11 ALL WATER LINE TESTS SHALL BE COMPLETED SO THAT NO EXISTING LINES, EXISTING VALVES, OR NEWLY INSTALLED VALVES WHICH ARE CONNECTED TO THE OPERATING WATER SYSTEM ARE INCLUDED IN THE TESTS. ALLOWABLE TIMEFRAMES SHOULD FOLLOW MESA AMENDMENTS TO MAG AND MUST BE COORDINATED WITH THE CITY INSPECTOR. FOR A DAYTIME TIE-IN, THE CONTRACTOR SHALL COMPLETE ALL WORK NECESSARY TO RESTORE UTILITY SERVICE AND FULLY OPEN THE TIE-IN AREA TO TRAFFIC WITHIN THE TIME ALLOWED.
6. WATER LINE FLUSHING, PRESSURE TESTING, AND DISINFECTION SHALL BE COMPLETED PER MAG SPECIFICATION SECTION 611. MESA AMENDMENTS TO MAG SPECIFICATION SECTION 611, AND AWWA C651 (CURRENT VERSION). SOURCE WATER UTILIZED FOR FILLING, FLUSHING AND TESTING SHALL BE OBTAINED FROM A HYDRANT METER ORDERED THROUGH PERMIT SERVICES, AND SET BY CITY OF MESA WATER RESOURCES STAFF. IT IS PROHIBITED TO OPEN A VALVE TO THE EXISTING WATER SYSTEM TO FILL A NEWLY CONSTRUCTED OR REPAIRED PIPELINE AS OUTLINED IN THE MESA AMENDMENTS TO MAG SECTION 610.11 AND 611.
7. WATER METERS, METER BOXES, LIDS, ETC. IN CONFLICT WITH NEW CONSTRUCTION SHALL BE RELOCATED PER CITY OF MESA STANDARD DETAIL M-49 BY THE CONTRACTOR. THE RELOCATION SHALL INCLUDE ALL MATERIALS NECESSARY TO RECONNECT THE METER TO THE CITY DISTRIBUTION SYSTEM. SERVICE LINE EXTENSIONS, IF APPROVED IN WRITING BY MESA WATER RESOURCES DEPARTMENT, SHALL CONFORM TO MESA STANDARD DETAIL M-49. WHEN SERVICE LINE EXTENSIONS ARE APPROVED PER MESA STANDARD DETAIL M-49, SERVICE LINE COUPLINGS SHALL NOT BE PLACED UNDER ROADWAY SURFACES, CONCRETE GUTTERS, CURB AND GUTTER, OR CONCRETE DRIVEWAYS.
9. VALVES SHALL BE INSTALLED WITH VALVE BOX AND COVER PER MAG STD DETAILS 391-1, TYPE C WITH A DEEP-SKIRTED LID (4-INCHES MINIMUM) AS NOTED IN THE APPROVED PRODUCTS LIST.
10. ALL WATER LINE ABANDONMENT CUT AND PLUGS FOR ACTIVE LINES SHALL CONFORM TO THE FOLLOWING:
A. 12" AND SMALLER DIAMETER PER MESA STANDARD DETAIL M-50.
B. 16" DIAMETER PER M.A.G. STANDARD DETAIL 390, TYPE B.
C. GREATER THAN 16" DIAMETER, AS DESIGNED PER PLAN.
11. LIME-TREATED AGGREGATE BASE COURSE (ABC) MATERIAL, RECLAIMED CONCRETE MATERIAL (RCM), AND RECLAIMED ASPHALT PAVEMENT (RAP) MATERIALS ARE PROHIBITED FOR USE IN THE PIPE EMBEDMENT ZONE (BEDDING, HAUNCHING, INITIAL BACKFILL) FOR WATERLINE CONSTRUCTION PER MESA AMENDMENTS 601.4.2.
12. PER MESA AMENDMENTS 610.11, APPLICATIONS TO THE CITY OF MESA ENGINEERING INSPECTOR AND REVIEWED AND APPROVED BY THE WATER RESOURCE DEPARTMENT FOR WATER SYSTEM SHUTDOWN FOR THE PURPOSES OF CONSTRUCTION-RELATED ACTIVITIES SHALL BE MADE A MINIMUM OF FIVE (5) BUSINESS DAYS PRIOR TO THE SCHEDULED SHUTDOWN DATE. THE REQUEST SHALL INCLUDE PRIMARY AND SECONDARY VALVE NUMBERS, WHETHER A TEST SHUTDOWN IS REQUESTED, AND THE DATE AND DURATION OF THE REQUESTED SHUTDOWN. PER MAG 610.11, THE CITY OF MESA DOES NOT GUARANTEE A COMPLETE SHUTDOWN.

PRELIMINARY UTILITY PLAN SKYBRIDGE ARIZONA LOT 116B
A PORTION OF SECTION 32, TOWNSHIP 1 SOUTH, RANGE 7 EAST OF THE
GILA AND SALT RIVER MERIDIAN, MARICOPA COUNTY, ARIZONA



LEGAL DESCRIPTION:

A PARCEL OF LAND BEING A PORTION OF THAT TRACT AS CONVEYED TO PHOENIX-MESA GATEWAY AIRPORT AUTHORITY BY DEED OF RECORD IN INSTRUMENT NUMBER 2012-0207529, MARICOPA COUNTY RECORDS (MCR) AND AS SHOWN ON THAT ALTA/NSPS LAND TITLE SURVEY BY HUNTER ENGINEERING STAMPED AND SIGNED BY JERRY D. HEATH JR. ON 4/30/2018 LOCATED WITHIN A PORTION OF THE SOUTHWEST QUARTER OF SECTION 32, TOWNSHIP 1 SOUTH, RANGE 7 EAST OF THE GILA & SALT RIVER MERIDIAN, CITY OF MESA, MARICOPA COUNTY, ARIZONA, MORE PARTICULARLY DESCRIBED AS FOLLOWS:
COMMENCING AT THE SOUTHWEST CORNER OF SAID SECTION 32 (FND 1.5" IRON PIPE) FROM WHICH POINT THE SOUTH QUARTER CORNER THEREOF (2.5" AL CAP) BEARS S 89°29'18" E A DISTANCE OF 2637.95 FEET;
THENCE N 4°09'50" E A DISTANCE OF 1067.41 FEET TO A POINT ON THE EAST LINE OF A PUBLIC UTILITY AND FACILITY EASEMENT (PUFE) AS SHOWN ON THE MAP OF DEDICATION FOR VELOCITY WAY, SOUTH TAXIWAY CIRCLE AND SOUTH CARGO WAY RECORDED IN BOOK 722, PAGE 39, MARICOPA COUNTY RECORDS BEING THE WEST BOUNDARY LINE OF SAID ALTA/NSPS LAND TITLE SURVEY AND THE BEGINNING OF A NON-TANGENT CURVE TO THE LEFT FROM WHICH POINT THE RADIUS POINT BEARS S 87°09'23" W, THE POINT OF BEGINNING;
THENCE ACROSS SAID PHOENIX-MESA GATEWAY AIRPORT AUTHORITY TRACT THE REMAINING COURSES AND DISTANCES:
THENCE ALONG SAID NON-TANGENT CURVE TO THE LEFT AND ALONG SAID EAST PUFE LINE HAVING A RADIUS OF 1811.00 FEET, THROUGH A CENTRAL ANGLE OF 08°40'07" AND HAVING AN ARC LENGTH OF 274.00 FEET;
THENCE N 79°16'10" E A DISTANCE OF 414.41 FEET;
THENCE ALONG THE ARC OF A CURVE TO THE LEFT HAVING A RADIUS OF 775.00 FEET, THROUGH A CENTRAL ANGLE OF 14°10'04" AND HAVING AN ARC LENGTH OF 191.64 FEET TO A CUSP AND THE BEGINNING OF A NON-TANGENT CURVE TO THE LEFT FROM WHICH POINT THE RADIUS POINT BEARS S 40°52'15" E;
THENCE ALONG SAID NON-TANGENT CURVE TO THE LEFT HAVING A RADIUS OF 155.00 FEET, THROUGH A CENTRAL ANGLE OF 69°19'34" AND HAVING AN ARC LENGTH OF 187.55 FEET;
THENCE S 20°11'49" E A DISTANCE OF 169.18 FEET;
THENCE ALONG THE ARC OF A CURVE TO THE RIGHT HAVING A RADIUS OF 95.00 FEET, THROUGH A CENTRAL ANGLE OF 20°11'49" AND HAVING AN ARC LENGTH OF 33.49 FEET;
THENCE S00°00'00" E A DISTANCE OF 44.94 FEET;
THENCE N 90°00'00" W A DISTANCE OF 575.15 FEET TO THE POINT OF BEGINNING.
THE ABOVE DESCRIBED PARCEL CONTAINS 180,831.14 SQUARE FEET OR 4.1513 ACRES OF LAND, MORE OR LESS, INCLUDING ANY EASEMENTS OF RECORD.
THE BASIS OF BEARING FOR THE ABOVE DESCRIPTIONS IS S89°29'18" E FOR THE SOUTH LINE OF THE SOUTHWEST QUARTER OF SECTION 32, TOWNSHIP 1 SOUTH, RANGE 7 EAST OF THE GILA & SALT RIVER MERIDIAN, CITY OF MESA, MARICOPA COUNTY, ARIZONA, AS SHOWN ON THE PLSS SUBDIVISION RECORD OF SURVEY-MARICOPA COUNTY GEODETIC DENSIFICATION AND CADASTRAL SURVEY RECORDED IN BOOK 609, PAGE 29, MARICOPA COUNTY RECORDS.

WATER, WASTEWATER, AND STORM DRAIN NOTES (CITY OF MESA) CONTINUED

- 13. REQUIRED BACKFLOW PREVENTION ASSEMBLIES SHALL INCLUDE MANUFACTURERS AND MODELS DESIGNATED IN THE CURRENT "LIST OF APPROVED BACKFLOW PREVENTION ASSEMBLIES" AS PUBLISHED BY THE FOUNDATION FOR CROSS-CONNECTION CONTROL AND HYDRAULIC RESEARCH, UNIVERSITY OF SOUTHERN CALIFORNIA.
14. BACKFLOW PREVENTION ASSEMBLIES SHALL BE TESTED AND APPROVED BY A CERTIFIED TECHNICIAN DESIGNATED IN THE CURRENT CITY OF MESA "LIST OF APPROVED INSPECTORS" PRIOR TO THE REQUEST FOR FINAL INSPECTION.
15. ALL WATER METERS ARE TO BE SUPPLIED BY THE CITY OF MESA. CHARGES FOR INSTALLING NEW SERVICES AND METERS WILL BE IN ACCORDANCE WITH THE CURRENT UTILITY SERVICE FEE SCHEDULE. METERS TWO INCHES OR LESS WILL BE DELIVERED AND INSTALLED BY CITY FORCES. METERS LARGER THAN TWO INCHES WILL BE DELIVERED BY THE CITY AND INSTALLED BY THE CONTRACTOR AND REQUIRE SCHEDULING AND INSPECTIONS WITH CITY FORCES. CONTACT THE DEVELOPMENT SERVICES DEPARTMENT AT 480-644-4273 FOR THE SPECIFIC PROCEDURE. SEE M-27.01 FOR MORE INFORMATION.
16. WHEN GROUTING OR CASTING CONCRETE AROUND PVC SEWER PIPE, SUCH AS AT MANHOLE OR VAULT PENETRATIONS, THE CONTRACTOR SHALL INSTALL WATER STOPS PER MESA AMENDMENTS TO MAG SPECIFICATION 625 AND MANUFACTURER'S RECOMMENDATIONS.
17. SEWER BUILDING CONNECTION LATERALS SHALL BE INSTALLED PER MAG STANDARD DETAIL 440. LATERAL WYES SHALL BE INSTALLED AT NO GREATER THAN A 45 DEGREE ANGLE FROM HORIZONTAL. SEWER LATERAL SLOPES SHALL BE AS INDICATED ON MAG STANDARD DETAIL 440 AND IN NO CIRCUMSTANCE SHALL SEWER LATERAL SLOPES EXCEED 7/8" PER FOOT FOR 6" LATERALS AND 1-1/2" PER FOOT FOR 4" LATERALS. FITTINGS SHALL BE INSTALLED WITH NO ANGULAR JOINT DEFLECTION AND ALL CONNECTIONS SHALL BE GASKETED OR SEALED PER MAG SPECIFICATIONS.
18. SEWER MANHOLE BASES, BENCHES, SHELVES, AND CHANNELS SHALL BE CONSTRUCTED PER MAG STANDARD DETAIL 420. EACH INLET PIPE SHALL HAVE A DESIGNATED, FORMED CHANNEL AND BENCHING. THE DIMENSIONS OF CHANNELS, SHELF SLOPE, AND MINIMUM INLET PIPE ANGLES SHALL BE CONSTRUCTED PER MAG STANDARD DETAIL 420-3.
19. PER MESA DESIGN STANDARDS, SEWER MANHOLES SHALL BE CONSTRUCTED PER MAG STANDARD DETAILS 420-1, TYPE 'A' TOP; AND 423-2 EXCEPT THAT:
A. MANHOLE SHAFT DIAMETERS SHALL BE 5 FEET.
B. MANHOLE RINGS AND COVERS SHALL HAVE 30-INCH DIAMETERS.
C. STEPS SHALL NOT BE INCLUDED.

ENGINEER:

ARDURRA
ATTN: JOHN BISHOP, PM
63 E MAIN ST, STE 502
MESA, AZ 85201
PHONE: 480-539-7407

PROJECT MANAGER: JOHN BISHOP
EMAIL: JEBISHOP@ARDURRA.COM

PROJECT ENGINEER: STEVE LEWIS
EMAIL: SLEWIS@ARDURRA.COM

DEVELOPER/OWNER:

MESA SKYBRIDGE, LLC
ATTN: WILL MOSELEY
2415 E CAMELBACK RD, STE 700
PHOENIX, ARIZONA 85016
PHONE: 602-508-3561
WILL.MOSELEY@SKYBRIDGEDEVELOPMENTS.COM

ARCHITECT:

ADM GROUP, INC.
ATTN: GLENN KLIPFEL
2100 WEST 15TH STREET,
TEMPE, AZ 85281
PHONE: 480.285.3832
EMAIL: GKLIFFEL@ADMGROUPINC.COM

SITE INFORMATION AND PROJECT DATA

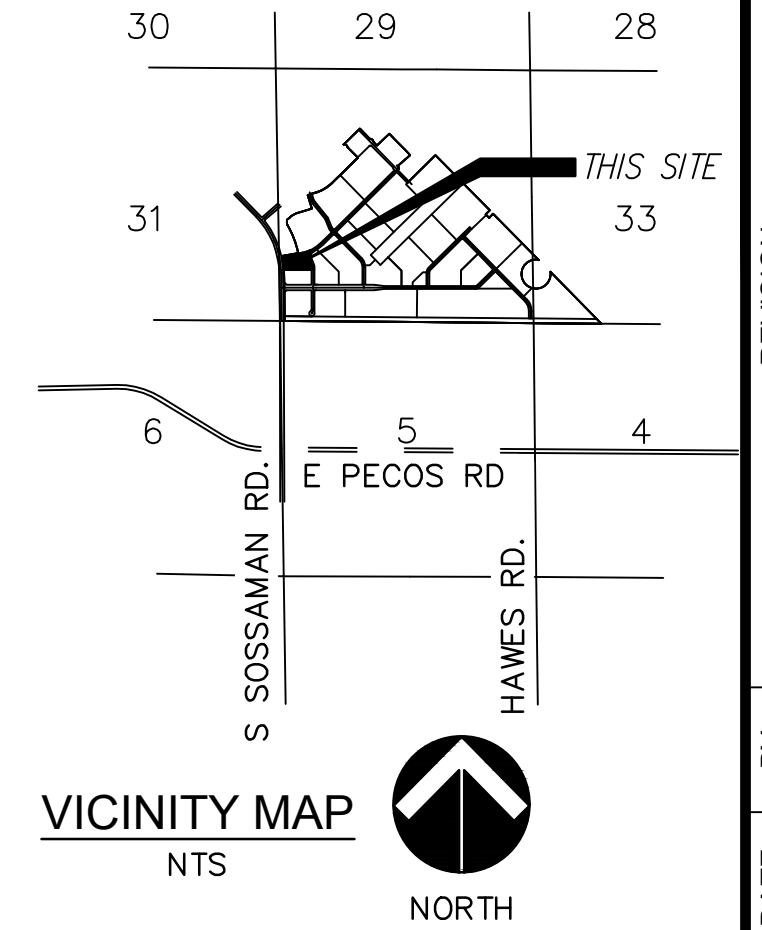
ADDRESS: 6613 SOUTH SOSSAMAN ROAD, MESA, AZ 85212
ASSESSOR'S NUMBER(S): APN 304-36-002C
AREA: 180,831.14 SF (4.151 ACRES)
ZONING: L1

SHEET INDEX

Table with 3 columns: SHEET NO., DWG NO., SHEET. Row 1: 1, CV01, COVER SHEET. Row 2: 2, PUT01, PRELIMINARY UTILITY PLAN.

LEGEND

- Proposed Water Line (solid line with 'W' symbol)
Proposed Sewer Line (solid line with 'S' symbol)
Sawcut Line (dashed line)
Property Line (long dashed line)
Easement/Building Setback Line (short dashed line)
Section Line (dash-dot line)
Right of Way (long dash-short dash line)
Existing Overhead Electric (line with 'OHE' symbol)
Existing Fence (line with 'X' symbol)
Existing Water Line (line with 'W' symbol)
Existing Sewer Line (line with 'S' symbol)
Existing Underground Electric (line with 'UGE' symbol)
Existing Storm Drain (line with 'SD' symbol)
Existing Telephone Service (line with 'T' symbol)
Existing Gas Line (line with 'G' symbol)
Property Corner (circle with 'P')
Existing Water Meter (circle with 'W')
Existing Sewer Manhole (circle with 'SS')
Existing Storm Drain Manhole (circle with 'SD')
Existing Fire Hydrant (circle with 'F')
Existing Water Valve (circle with 'V')
Existing Pedestal (circle with 'I')
Existing Power Pole (circle with 'P')
Existing Sign (circle with 'S')
Existing Overhead Light (circle with 'L')



BENCHMARKS:

- BENCHMARK NO. 1
SOSSAMAN ROAD & GERMANN ROAD
BRASS TAG NORTHWEST CORNER IN BRIDGE
(NAVD88) ELEVATION = 1356.84
N=829154.80
E=775618.91
BENCHMARK NO. 2
SIGNAL BUTTE ROAD AND WARNER ROAD
BRASS TAG ON TOP OF CURB AT
NORTHEAST CORNER
(NAVD88) ELEVATION = 1453.68
N=84927.63
E=796601.80
BENCHMARK NO. 3
MERIDIAN ROAD AND WARNER ROAD
BRASS TAG ON TOP OF CURB AT
NORTHWEST CORNER
(NAVD88) ELEVATION = 1481.30
N=849854.30
E=801754.48

BASIS OF BEARING:

FOR THIS PROJECT IS S89°29'18"E FOR THE SOUTH LINE OF THE SOUTHWEST QUARTER OF SECTION 32, TOWNSHIP 1 SOUTH, RANGE 7 EAST OF THE GILA & SALT RIVER MERIDIAN AS CALCULATED FROM A PLSS SUBDIVISION RECORD OF SURVEY MARICOPA COUNTY GEODETIC DENSIFICATION AND CADASTRAL SURVEY RECORDED IN BOOK 609, PAGE 29, MARICOPA COUNTY RECORDS.

UTILITIES/SERVICE PROVIDERS

Table listing utility providers: SEWER (CITY OF MESA), WATER (CITY OF MESA), GAS (SOUTHWEST GAS), ELECTRICITY (APS), TELEPHONE (CENTURYLINK), POLICE (CITY OF MESA), FIRE (MESA FIRE DEPARTMENT), SOLID WASTE (CITY OF MESA).

MCESD APPROVAL:

SIGNATURE
WWR PERMIT NUMBER: XX-XXXX

MCESD APPROVAL:

SIGNATURE
DWR PERMIT NUMBER: XX-XXXX

CITY OF MESA APPROVAL

SIGNATURE DATE



Vertical information strip on the right margin containing revision table, project title 'SKYBRIDGE ARIZONA LOT 116B', address '6613 SOUTH SOSSAMAN ROAD', drawing title 'PRELIMINARY UTILITY PLAN COVER SHEET', DWG: CV01, SHEET 1 OF 2, and other project details.