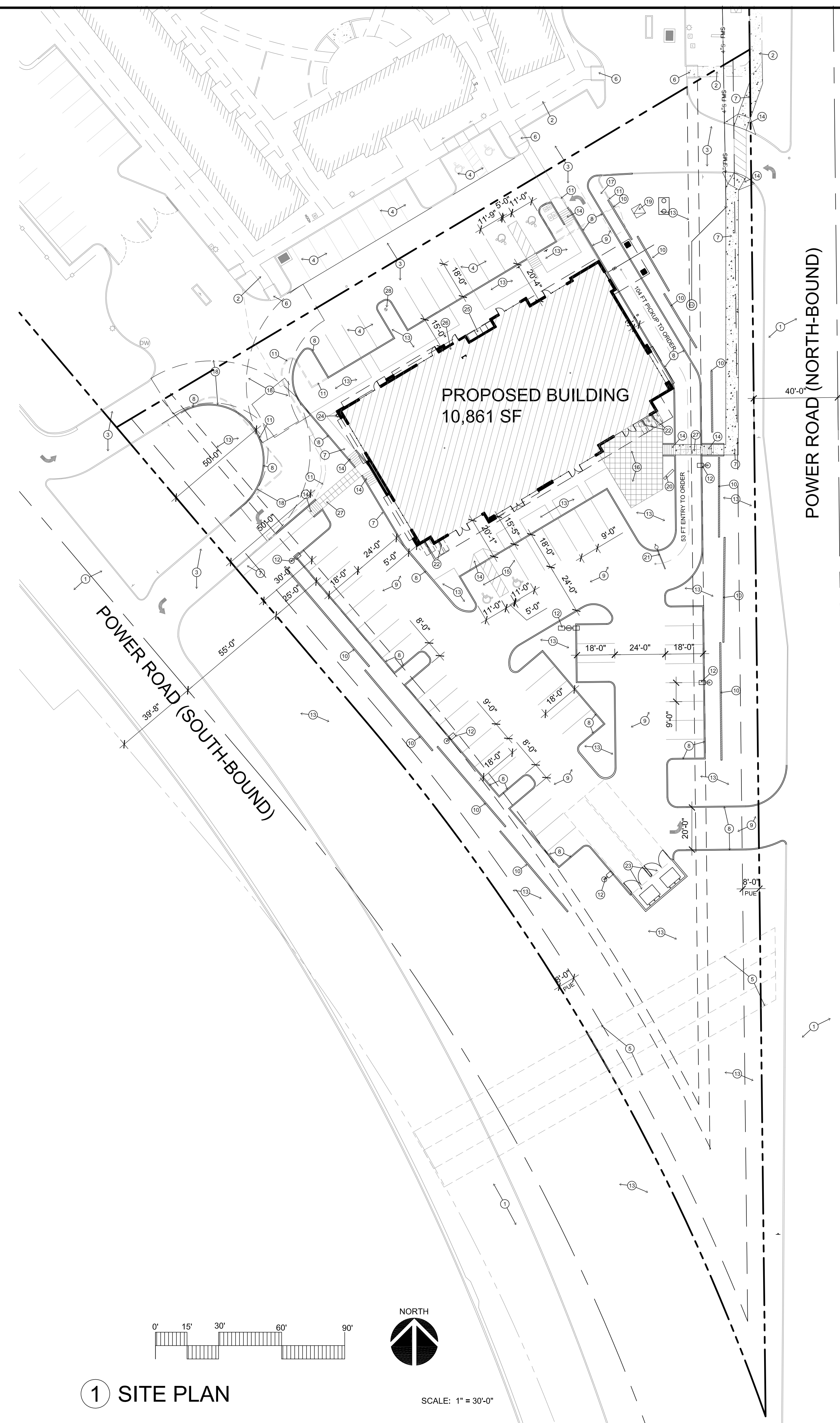
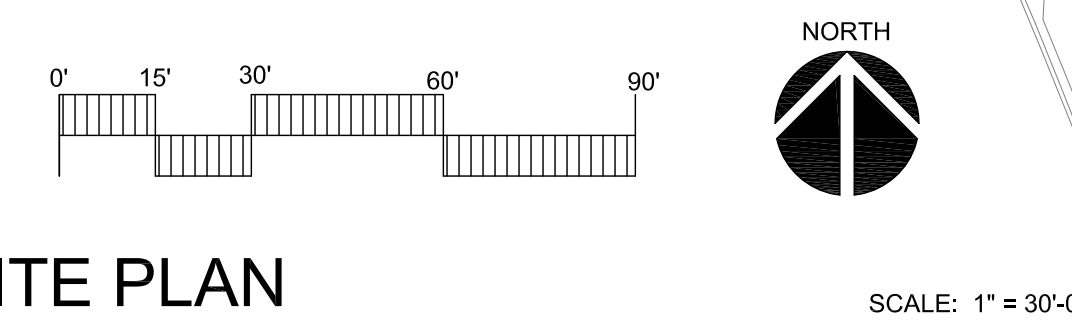


2 VICINITY PLAN



1 SITE PLAN



SITE DATA

BUILDING SIZE: 10,861 SF
 BUILDING HEIGHT: 25'-4"
 RESTAURANT AREA: 2,692 SF INDOOR
 900 SF OUTDOOR
 RETAIL AREA: 8,169 SF
 PARKING REQUIRED:
 RESTAURANT: 1 SPACE PER 100 SF OF INDOOR PLUS 1 SPACE PER 200 SF OF OUTDOOR AREA
 RETAIL: 1 SPACE PER 375 SF
 RESTAURANT: 2,692 / 100 = 27 SPACES
 900 / 200 = 5 SPACES
 RETAIL: 8,169/375 = 22 SPACES
 TOTAL PARKING REQUIRED: 54 SPACES
 TOTAL PARKING PROVIDED: 61 SPACES
 BICYCLE PARKING REQUIRED: 1 SPACE PER 10 VEHICLE SPACES
 61 / 10 = 7 BIKE PARKING REQUIRED
 8 BIKE PARKING SPACES PROVIDED

KEYNOTES

- 1 EXISTING STREET
- 2 EXISTING SIDEWALK
- 3 EXISTING DRIVE TO REMAIN
- 4 EXISTING PARKING TO REMAIN
- 5 OVERHEAD ELECTRICAL EASEMENT
- 6 EXISTING ADA RAMP TO REMAIN
- 7 NEW CONCRETE SIDEWALK. 5'-0" WIDE MIN.
- 8 6" HIGH CONCRETE CURB
- 9 ASPHALT PAVING
- 10 3'-4" TALL CMU SCREEN WALL
- 11 REMOVE EXISTING CURBING AS REQUIRED
- 12 PARKING LOT LIGHT FIXTURE
- 13 LANDSCAPE AREA
- 14 NEW ADA RAMP
- 15 ADA PARKING AND SIGNAGE
- 16 CONCRETE PATIO AREA
- 17 GREASE INTERCEPTOR LOCATION
- 18 FIRE TRUCK TURNING RADIUS. 35' INSIDE 55' OUTSIDE
- 19 PROPOSED ELECTRICAL TRANSFORMER
- 20 MENU BOARD
- 21 CLEARANCE BAR
- 22 BIKE RACK. SEE DETAIL
- 23 TRASH ENCLOSURE PER C.O.M. M-62 DETAILS
- 24 FIRE DEPARTMENT CONNECTION
- 25 S.E.S. (ELECTRICAL GEAR)
- 26 FIRE RISER
- 27 CONCRETE CROSSWALK. 30" X 30" SAW CUT JOINTS. GREY CONCRETE. HEAVY BROOM FINISH. CROSSWALK TO BE RAISED 3" ABOVE SURROUNDING ASPHALT.
- 28 EXISTING FIRE HYDRANT

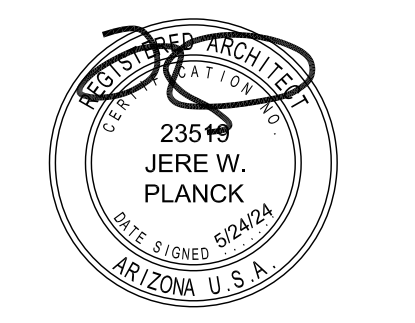
ARCHICON
 Architecture & Interiors, L.C.
 5055 E WASHINGTON STREET
 SUITE 200
 PHOENIX, ARIZONA 85034
 (602) 222-4266
 FAX (602) 279-4305
 www.ARCHICON.COM

CABANA ON POWER ROAD RETAIL CENTER
 6209 S POWER ROAD
 MESA, ARIZONA

PROJECT NUMBER: 2466810-01
 PROJECT MANAGER: JEFF K
 DRAWN BY: JEFF K
 CHECKED BY: JEFF K

NO	REVISION	DATE

SHEET DESCRIPTION
 SITE PLAN



SHEET NO.

A100

ISSUE DATE: 24 MAY 2024