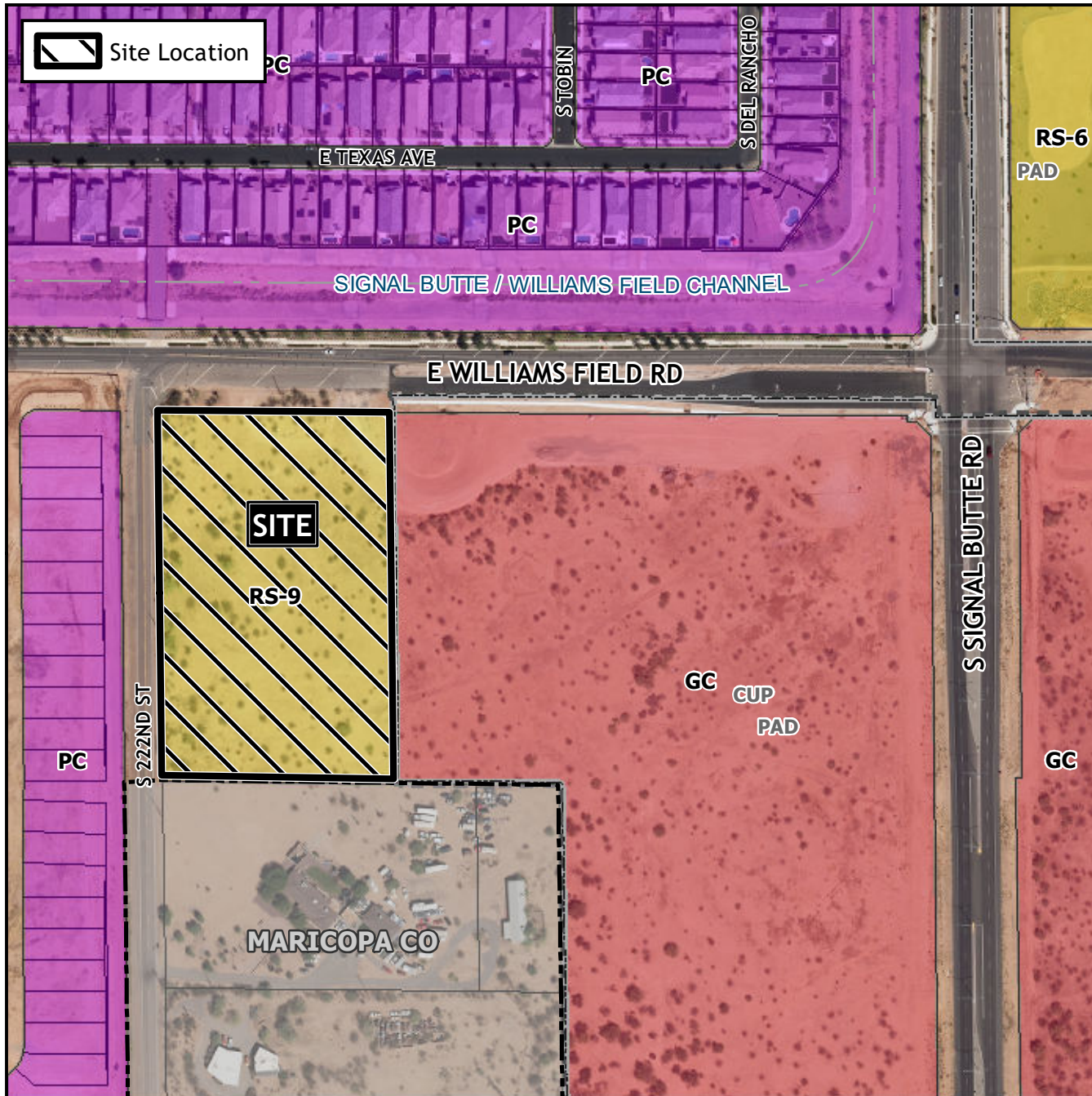


# Design Review Vicinity Map: DRB24-00037

# Case Details



## Case:

DRB24-00037

## Site / Address:

(District 6). Within the 10600 block of East Williams Field Road (south side) and within the 6000 block of South 222nd Street (east side). Located west of Signal Butte Road on the south side of Williams Field Road. (5± acres).

## Request:

Design Review for a place of worship.

