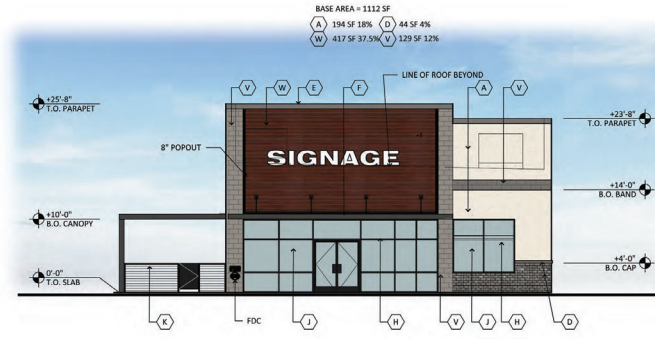
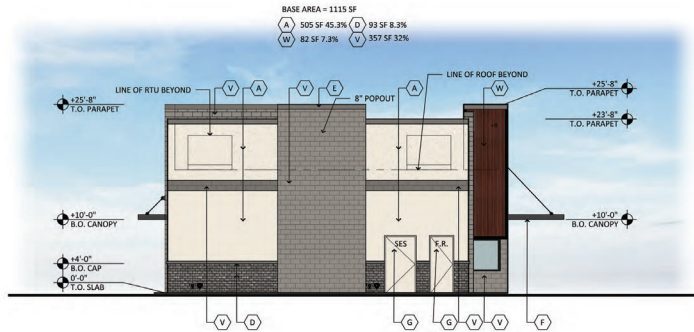




1 PAD A - SOUTH ELEVATION
SCALE: 1/8" = 1'-0"



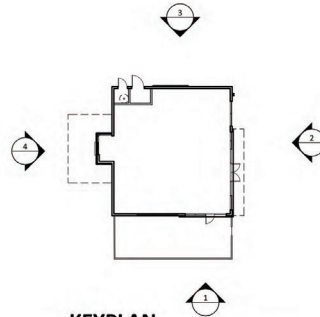
2 PAD A - EAST ELEVATION
SCALE: 1/8" = 1'-0"



3 PAD A - NORTH ELEVATION
SCALE: 1/8" = 1'-0"



4 PAD A - WEST ELEVATION
SCALE: 1/8" = 1'-0"



KEYPLAN

MATERIALS

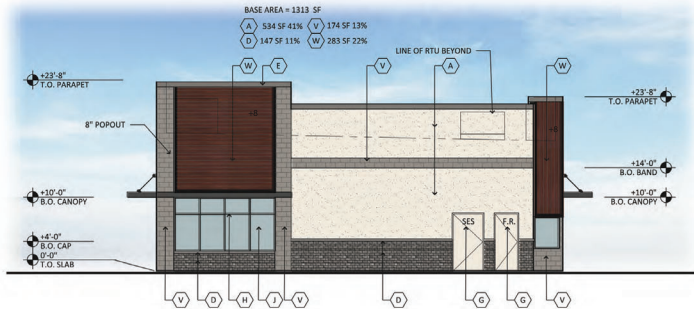
- A: STUCCO
PAINT - SW7012 "CREAMY"
SMOOTH FINISH
- B: STUCCO
PAINT - SW7019 "GUANTLET GRAY"
SMOOTH FINISH
- C: STUCCO
PAINT - SW7018 "DOVETAIL"
SMOOTH FINISH
- D: BRICK VENEER AND CAP
KONI BRICK
GREY
- E: METAL GALVANIZED PARAPET CAP
PAINT - SW7069 "IRON ORE"
- F: STEEL CANOPY & COLUMN
PAINT - SW7069 "IRON ORE"
- G: PAINTED CMU
PAINT - SW7012 "CREAMY"
- H: ALUMINUM STOREFRONT
BLACK ANODIZED
- J: SOLARBAN 60 GLAZING
- K: PRE-FAB METAL PATIO FENCE &
RAILING
PAINT - SW7069 "IRON ORE"
- M: METAL ROLL-UP DOORS
JANUS EXTERIOR
FINISH - EXR WASABI
- N: HOLLOW METAL DOORS
PAINT - SW7019 "GUANTLET GRAY"
- P: METAL GALVANIZED PARAPET CAP
PRE-FINISHED TO MATCH - SW7019 "GUANTLET"
- S: STUCCO
PAINT - SW7067 "CITYSCAPE"
SMOOTH FINISH
- V: CMU
PAINT - SW7018 "DOVETAIL"
- W: HORIZONTAL AND VERTICAL METAL PANEL
MFG: FASTPLANK
WOODGRAIN COLOR:
DARK WALNUT
TRIM COLOR: BLACK



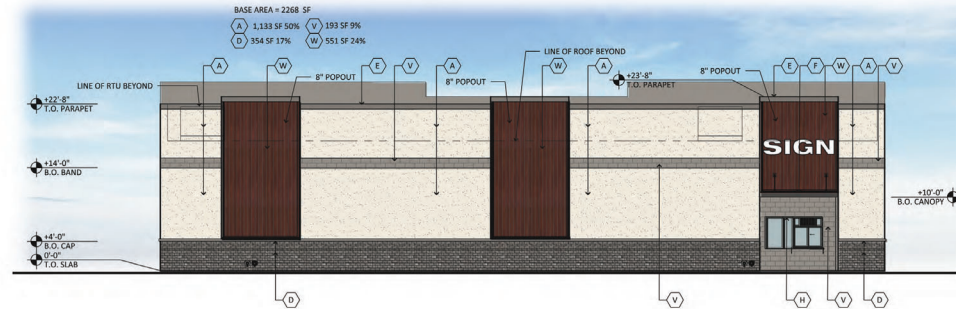
1 PAD B - SOUTH ELEVATION
SCALE: 1/8" = 1'-0"



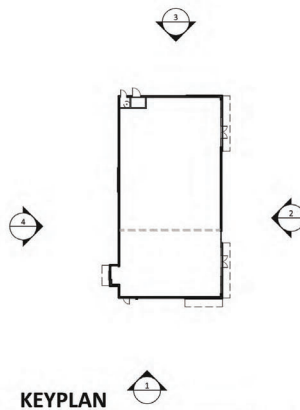
2 PAD B - EAST ELEVATION
SCALE: 1/8" = 1'-0"



3 PAD B - NORTH ELEVATION
SCALE: 1/8" = 1'-0"



4 PAD B - WEST ELEVATION
SCALE: 1/8" = 1'-0"



KEYPLAN

MATERIALS

- A: STUCCO
PAINT - SW7012 "CREAMY"
SMOOTH FINISH
- B: STUCCO
PAINT - SW7019 "GUANTLET GRAY"
SMOOTH FINISH
- C: STUCCO
PAINT - SW7018 "DOVETAIL"
SMOOTH FINISH
- D: BRICK VENEER AND CAP
KONI BRICK
GREY
- E: METAL GALVANIZED PARAPET CAP
PAINT - SW7069 "IRON ORE"
- F: STEEL CANOPY & COLUMN
PAINT - SW7069 "IRON ORE"
- G: PAINTED CMU
PAINT - SW7012 "CREAMY"
- H: ALUMINUM STOREFRONT
BLACK ANODIZED
- J: SOLARBAN 60 GLAZING
- K: PRE-FAB METAL PATIO FENCE &
RAILING
PAINT - SW7069 "IRON ORE"
- L: CMU
PAINT - SW7689 "ROW HOUSE TAN"
SMOOTH FACE
- M: METAL ROLL-UP DOORS
JANUS EXTERIOR
FINISH - EXR WASABI
- N: HOLLOW METAL DOORS
PAINT - SW7019 "GUANTLET GRAY"
- P: METAL GALVANIZED PARAPET CAP
PRE-FINISHED TO MATCH - SW7019 "GUANTLET"
- R: STUCCO
PAINT - SW7063 "NEBULOUS WHITE"
SMOOTH FINISH
- S: STUCCO
PAINT - SW7067 "CITYSCAPE"
SMOOTH FINISH
- T: CONCRETE CAP
PAINT - SW7063 "NEBULOUS WHITE"
- U: SPLITFACE CMU
PAINT - SW7689 "ROW HOUSE TAN"
- V: CMU
PAINT - SW7018 "DOVETAIL"
- W: HORIZONTAL AND VERTICAL METAL PANEL
MFG: FASTPLANK
WOODGRAIN COLOR:
DARK WALNUT
TRIM COLOR: BLACK
- X: METAL PANEL SYSTEM
MFG: FASTPLANK
COLOR: CADET GRAY



1 PAD C - SOUTH ELEVATION
SCALE: 1/8" = 1'-0"

MATERIALS

- D1: SPLIT-FACE CMU SUPERLITE BLOCK BLACK
- F: STEEL CANOPY & COLUMN PAINT - SW7069 "IRON ORE"
- H1: DARK BRONZE ALUMINUM STOREFRONT
- J: SOLARBAN 60 GLAZING
- D2: SMOOTH FACE CMU SUPERLITE BLOCK BONE
- M1: METAL ROLL-UP DOORS JANUS OR E.Q. STORAGE DOOR WASABI GREEN
- N: HOLLOW METAL DOORS PAINT - SW7019 "GUANTLET GRAY"
- L: METAL GALVANIZED PARAPEET CAP PAINT - SW7069 "IRON ORE"
- R: SAND FINISH STUCCO DUNN EDWARDS DEC766 'STEVEARENO BEIGE'
- S: STUCCO PAINT - SW7067 "CITYSCAPE" SMOOTH FINISH
- T: UNA CLAD METAL PANEL SYSTEM - CHARCOAL GREY
- X: UNA CLAD METAL PANEL SYSTEM - CITYSCAPE
- Y: ARCHITECTURAL LOUVERS MECHANICAL SCREEN SANDSTONE



2 PAD C - EAST ELEVATION
SCALE: 1/8" = 1'-0"



KEYPLAN

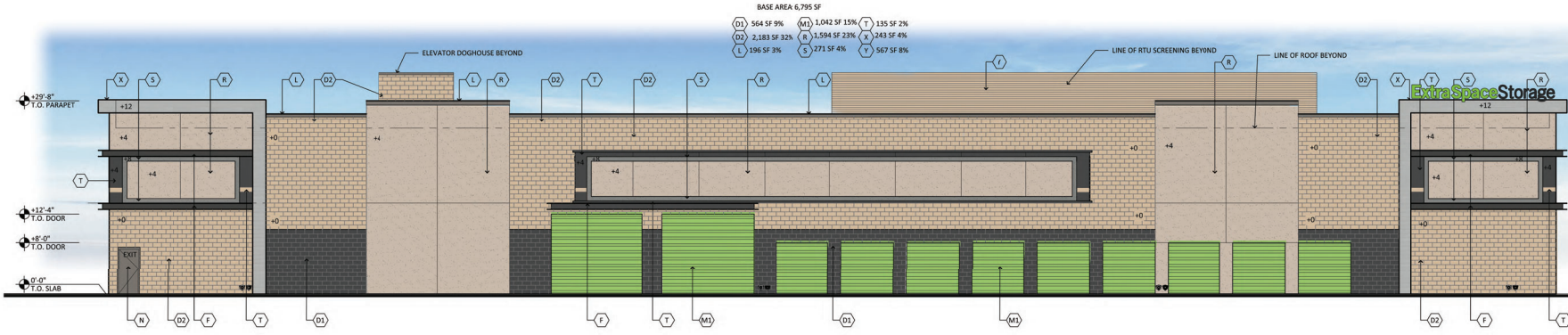
UNIVERSITY MULTI-USE
4312 E UNIVERSITY DRIVE
MESA, ARIZONA 85205
DATE: 10-16-2023 (PRELIMINARY)

**EL-3
PAD C**

RKAA# 19066.00

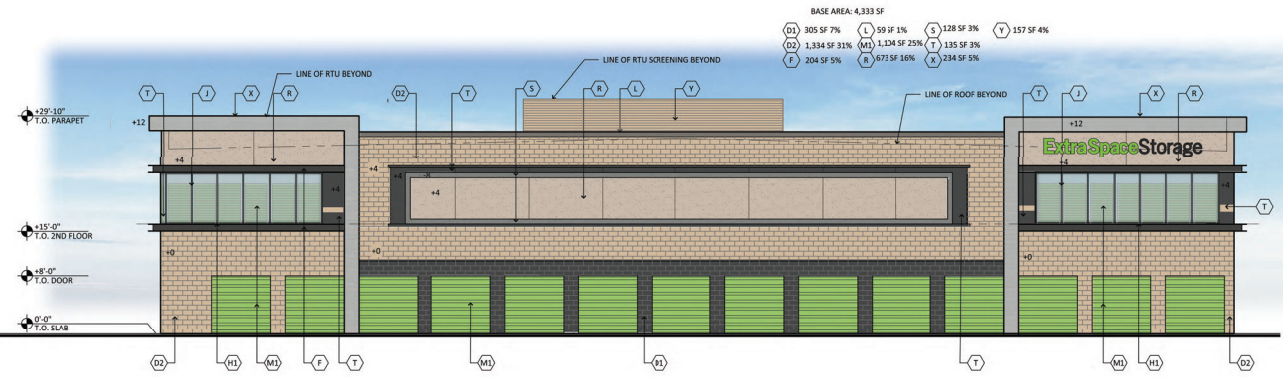
© 2015 R K A A ARCHITECTS, INC. ALL RIGHTS RESERVED. THIS DRAWING IS THE PROPERTY OF R K A A ARCHITECTS, INC. AND NO PART OF IT IS TO BE DISCLOSED WITHOUT WRITTEN PERMISSION OF THE ARCHITECT.





1 PAD C - NORTH ELEVATION
SCALE: 1/8" = 1'-0"

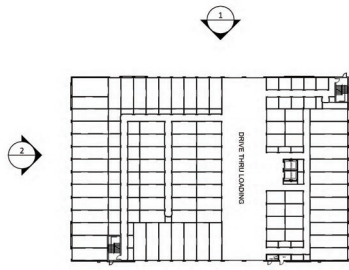
BASE AREA: 6,795 SF
 (D1) 564 SF 9% (M1) 1,042 SF 15% (T) 135 SF 2%
 (D2) 2,183 SF 32% (R) 1,294 SF 23% (X) 243 SF 4%
 (L) 196 SF 3% (S) 271 SF 4% (Y) 567 SF 8%



2 PAD C - WEST ELEVATION
SCALE: 1/8" = 1'-0"

BASE AREA: 4,333 SF
 (D1) 305 SF 7% (L) 59 SF 1% (S) 128 SF 3% (Y) 157 SF 4%
 (D2) 1,334 SF 31% (M) 1,124 SF 25% (T) 135 SF 3%
 (F) 204 SF 5% (R) 673 SF 16% (X) 234 SF 5%

- MATERIALS**
- D1: SPLIT-FACE CMU SUPERLITE BLOCK BLACK
 - F: STEEL CANOPY & COLUMN PAINT - SW7069 "IRON ORE"
 - H1: DARK BRONZE ALUMINUM STOREFRONT
 - J: SOLARBAN 60 GLAZING
 - D2: SMOOTH FACE CMU SUPERLITE BLOCK BONE
 - M1: METAL ROLL-UP DOORS JANUS OR E.Q. STORAGE DOOR WASABI GREEN
 - N: HOLLOW METAL DOORS PAINT - SW7019 "GUANTLET GRAY"
 - L: METAL GALVANIZED PARAPET CAP PAINT - SW7069 "IRON ORE"
 - R: SAND FINISH STUCCO DUNN EDWARDS DEC766 "STEVEARENO BEIGE"
 - S: STUCCO PAINT - SW7067 "CITYSCAPE" SMOOTH FINISH
 - T: UNA CLAD METAL PANEL SYSTEM - CHARCOAL GREY
 - X: UNA CLAD METAL PANEL SYSTEM - CITYSCAPE
 - Y: ARCHITECTURAL LOUVERS MECHANICAL SANDSTONE



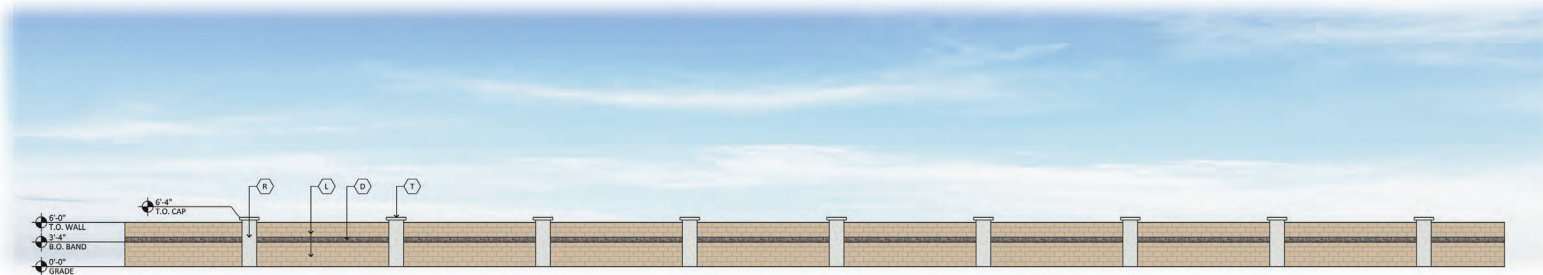
KEYPLAN

UNIVERSITY MULTI-USE
 4312 E UNIVERSITY DRIVE
 MESA, ARIZONA 85205
 DATE:10-16-2023 (PRELIMINARY)

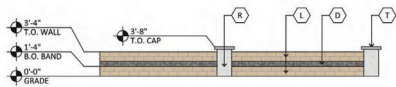


EL-4
 PAD C
 RKAA# 19066.00

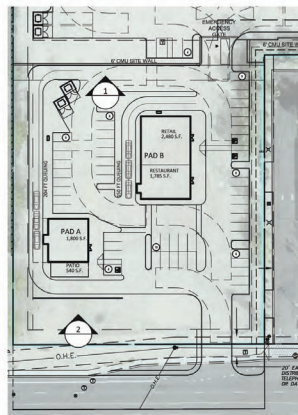
© 2013 RKAA ARCHITECTS, INC. ALL RIGHTS RESERVED. THIS DRAWING IS AN INSTRUMENT OF SERVICE. IT IS THE PROPERTY OF RKAA ARCHITECTS, INC. AND MAY NOT BE REPRODUCED OR DISCLOSED WITHOUT WRITTEN PERMISSION OF THE ARCHITECT.



1 TYPICAL SITE WALL ELEVATION
SCALE: 1/8" = 1'-0"



1 TYPICAL SCREEN WALL ELEVATION
SCALE: 1/8" = 1'-0"



KEYPLAN

MATERIALS

- A: STUCCO
PAINT - SW7012 "CREAMY"
SMOOTH FINISH
- B: STUCCO
PAINT - SW7019 "GUANTLET GRAY"
SMOOTH FINISH
- C: STUCCO
PAINT - SW7018 "DOVETAIL"
SMOOTH FINISH
- D: BRICK VENEER AND CAP
KONI BRICK
GREY
- E: METAL GALVANIZED PARAPET WALL
PAINT - SW7069 "IRON ORE"
- F: STEEL CANOPY & COLUMN
PAINT - SW7069 "IRON ORE"
- G: PAINTED CMU
PAINT - SW7012 "CREAMY"
- H: ALUMINUM STOREFRONT
BLACK ANODIZED
- J: SOLARBAN 60 GLAZING
- K: PRE-FAB METAL PATIO FENCE &
RAILING
PAINT - SW7069 "IRON ORE"
- L: CMU
PAINT - SW7689 "ROW HOUSE TAN"
SMOOTH FACE
- M: METAL ROLL-UP DOORS
JANUS EXTERIOR
FINISH - EXR WASABI
- N: HOLLOW METAL DOORS
PAINT - SW7019 "GUANTLET GRAY"
- P: METAL GALVANIZED PARAPET WALL
PRE-FINISHED TO MATCH - SW7019 "GUANTLET GRAY"
- R: STUCCO
PAINT - SW7063 "NEBULOUS WHITE"
SMOOTH FINISH
- S: STUCCO
PAINT - SW7067 "CITYSCAPE"
SMOOTH FINISH
- T: CONCRETE CAP
PAINT - SW7063 "NEBULOUS WHITE"
- U: SPLITFACE CMU
PAINT - SW7689 "ROW HOUSE TAN"
- V: CMU
PAINT - SW7018 "DOVETAIL"
- W: HORIZONTAL AND VERTICAL METAL PANEL
MFG: FASTPLANK
WOODGRAIN COLOR:
DARK WALNUT
TRIM COLOR: BLACK
- X: METAL PANEL SYSTEM
MFG: FASTPLANK
COLOR: CADET GRAY