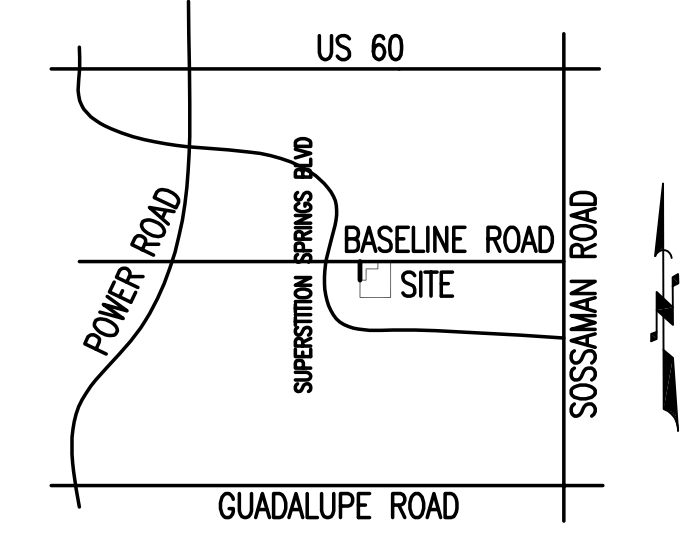


PRELIMINARY GRADING AND DRAINAGE FOR DESERT SKY DERMATOLOGY

CITY OF MESA, ARIZONA
A PORTION OF SOUTHWEST QUARTER OF SECTION 15, TOWNSHIP 5 SOUTH,
RANGE 8 EAST, OF THE GILA AND SALT RIVER BASE AND MERIDIAN,
MARICOPA COUNTY, ARIZONA



VICINITY MAP
N.T.S.

DEVELOPER / OWNER

DESERT SKY DERMATOLOGY
1688 E BOSTON ST
GILBERT, AZ 85295

ENGINEER

BFH GROUP
2621 EAST CARMEL CIRCLE
MESA, ARIZONA, 85204
PHONE: 480-734-1446
ATTN: DAVID M. BOHN

PROJECT INFORMATION

LOCATION: 7205 E. BASELINE ROAD
MESA, ARIZONA
ZONING: LC
PARCEL NUMBER: 304-05-009R
SITE AREA: 74,291 S.F. - 1.70 ACRES
OCCUPANCY: B OFFICE/MEDICAL
BUILDING #1:
MEDICAL OFFICES 11,000 S.F.
TOTAL BUILDING #1 = 11,000 S.F.
BUILDING #2:
MEDICAL OFFICES 5,400 S.F.
TOTAL BUILDING #2 = 5,400 S.F.
TOTAL BUILDING #1 & #2 = 16,600 S.F.

LEGEND

- PROPOSED CURB & GUTTER
- PUE
- RIGHT OF WAY (R/W)
- BOUNDARY LINE
- SIDEWALK LINE
- LOT LINE
- CENTER LINE
- VALLEY GUTTER
- LOT NUMBER
- SURVEY MONUMENT
- WATER VALVE
- TEE
- BEND
- 8" SEWER LINE
- 8" WATER LINE
- SEWER MANHOLE
- EX. WAT - EXISTING WATER
- EX. SEW - EXISTING SEWER
- EXISTING STREET LIGHT
- EXISTING ELECTRIC LINE
- EXISTING POWER POLE
- STORM DRAIN PIPE
- CATCH BASIN

RETENTION CALCULATIONS

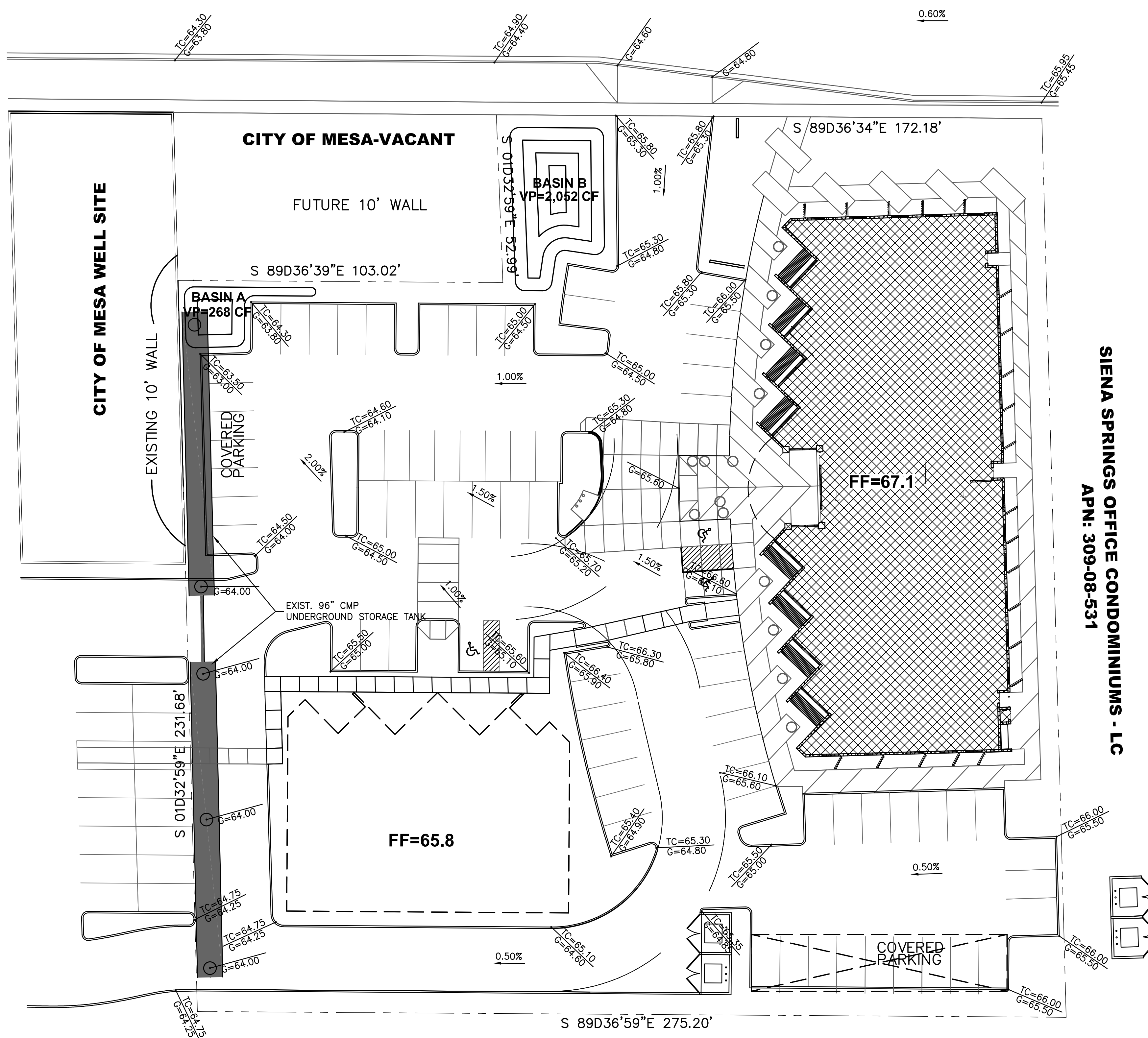
$V_r = A(P/12)(C)$
WHERE: V_r = CALCULATED VOLUME REQUIRED
A = DRAINAGE AREA
P = INCHES OF RAIN FOR A 100-YR, 2-HR STORM
= 2.20" DRAINAGE MANUAL FOR MARICOPA COUNTY
C = RUNOFF COEFFICIENT = 0.90

DRAINAGE AREA DESCRIPTION	ACRES	P (IN.)	C VALUE	CALCULATED V_r	VOL PROVIDED AS SHOWN ON PLAN	VOL PROVIDED AS SHOWN ON PLAN
DESERT SKY DERM	1.705	2.20	0.90	12,255 CF	BASINS A - B	2,320 CF
					96" STORAGE TANK (210 LF)	10,556 CF
TOTAL	1.705 AC	2.20	0.90	12,255 CF		12,876 CF

E. BASELINE ROAD

BUSINESS OFFICE/RETAIL DEVELOPMENT - LC
APN: 304-05-052D

SIENA SPRINGS OFFICE CONDOMINIUMS - LC
APN: 309-08-531



CONTINENTAL AT SUPERSTITION SPRINGS - RS-6
APN: 309-08-062

SIENA SPRINGS OFFICE CONDOMINIUMS - LC
APN: 309-08-531

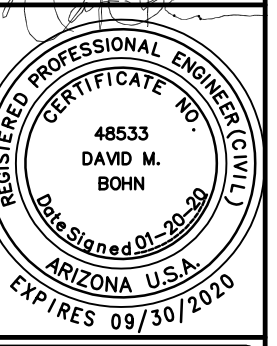
BFH GROUP
2621 EAST CARMEL CIRCLE
MESA, ARIZONA, 85204
PHONE: 480.734.1446

REVISIONS:	

PRELIMINARY GRADING AND DRAINAGE PLAN
PROJECT: DESERT SKY DERMATOLOGY
COMMERCIAL
CITY OF MESA, ARIZONA

Job No: 14050
Drawn By: P.J.
Checked: DB

CALL TWO WORKING DAYS BEFORE YOU DIG
(602) 263-1100
1-800-STAKE-IT
(OUTSIDE MARICOPA COUNTY)



JOB NO.
Prelim GD Plan
SHEET NO.
1
1 OF 1