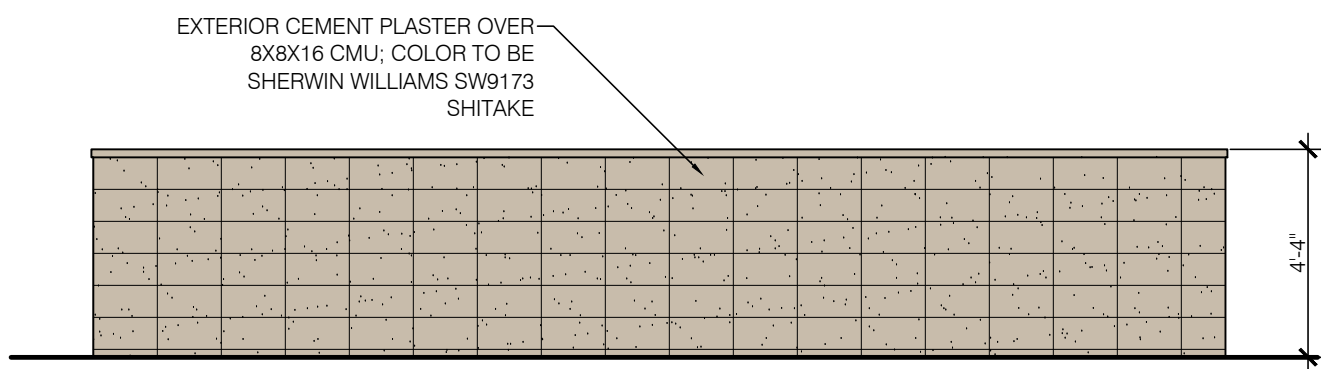
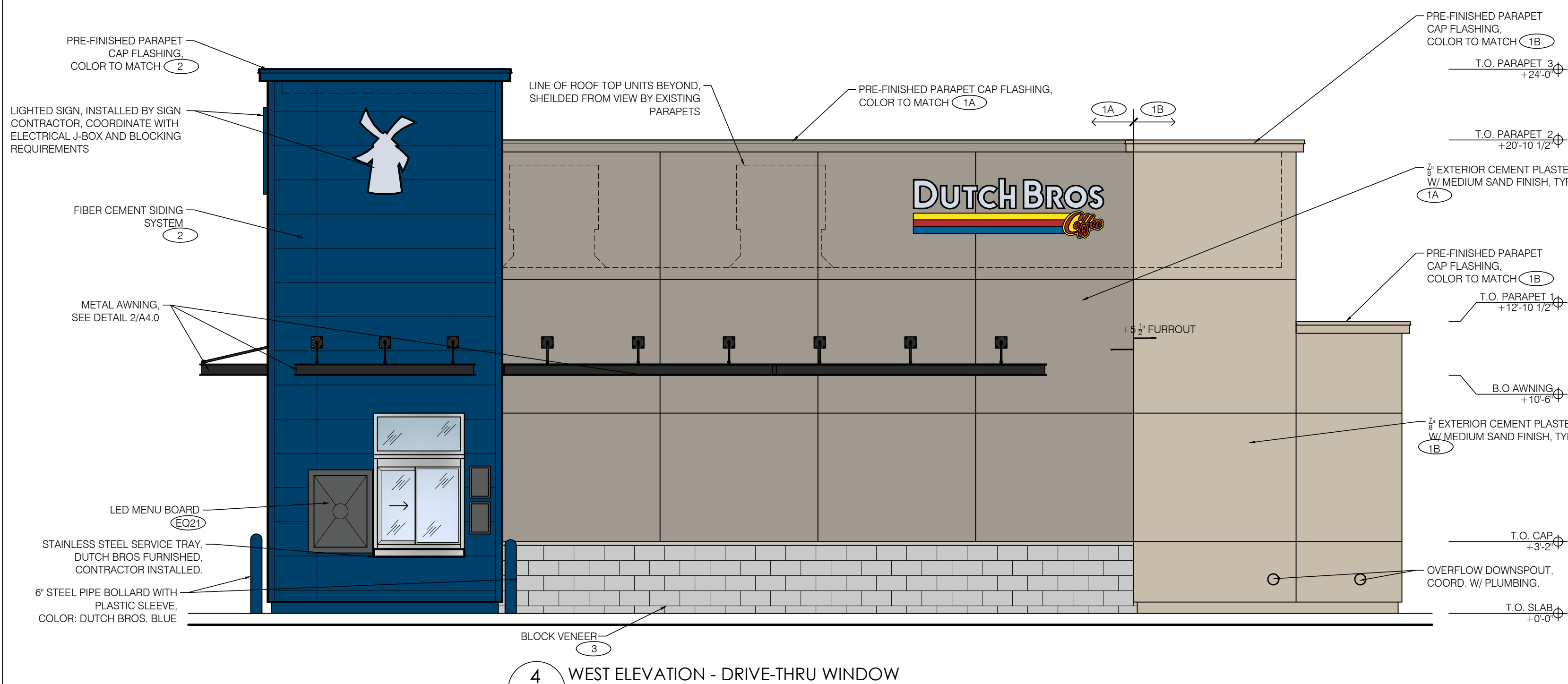


The name DUTCH BROS. and all associated logos, distinctive designs, content, information, and other materials featured, displayed, contained herein, and made available by Dutch Bros., including but not limited to, the "lock and feel" of the establishments and products, all text, images, colors, configurations, and/or other intellectual property rights and unfair competition laws under the United States and foreign laws.



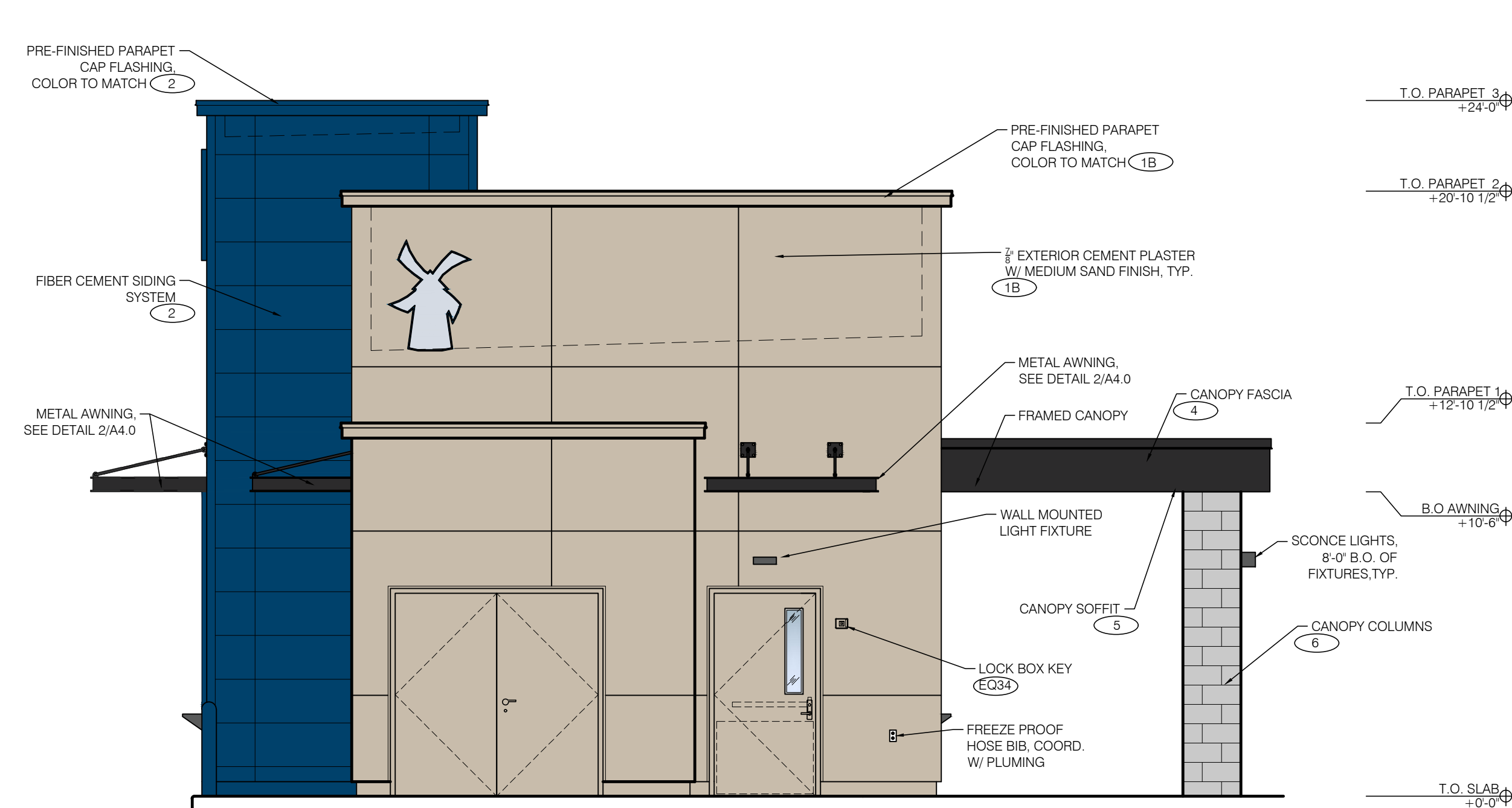
5 SCREEN WALL
SCALE: N. T. S.



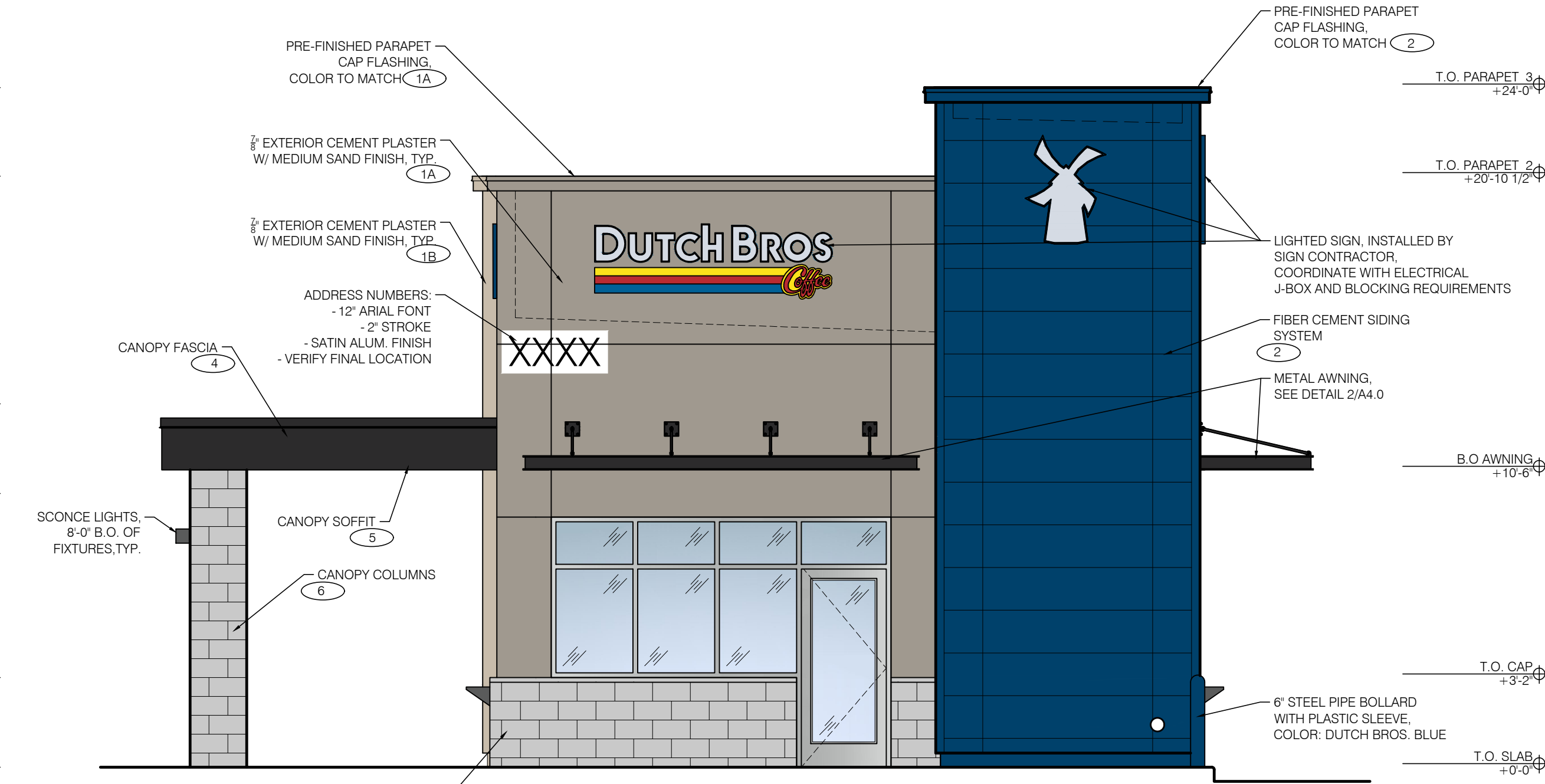
4 WEST ELEVATION - DRIVE-THRU WINDOW
SCALE: 1/4" = 1'-0"



2 EAST ELEVATION - WALK-UP WINDOW
SCALE: 1/4" = 1'-0"



3 SOUTH ELEVATION - REAR ELEVATION
SCALE: 1/4" = 1'-0"



1 NORTH ELEVATION - FRONT ELEVATION
SCALE: 1/4" = 1'-0"

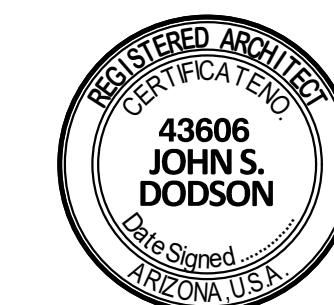
EXTERIOR FINISH SCHEDULE				
ID TAG	MATERIAL	MANUFACTURER	MODEL	REMARKS
ZONE 1 (BODY)				
1A	EXTERIOR CEMENT PLASTER	SHERWIN WILLIAMS	SW7642 PAVESTONE	3-COAT SYSTEM W/ ACRYLIC MEDIUM SAND FINISH; REVEALS AS SHOWN
1B	EXTERIOR CEMENT PLASTER	SHERWIN WILLIAMS	SW9173 SHITAKE	3-COAT SYSTEM W/ ACRYLIC MEDIUM SAND FINISH; REVEALS AS SHOWN
ZONE 2 (TOWER) (Z2)				
2	FIBER CEMENT SIDING	NICHIHA	ILLUMINATION, AWP 1818 W/ OPEN OUTSIDE CORNERS	FACTORY PAINTED BLDG DB BLUE; CAP FLASHING TO MATCH BLDG DB BLUE
ZONE 3 (3'-2" BASE)				
3	BLOCK VENEER	ECHELON STANDARD MASONRY	8"X4"X16" - SALT AND PEPPER	SILL TO MATCH
ZONE 4 (FRAMED CANOPY)				
4	FASCIA	WESTERN STATES METAL ROOFING	METAL FASCIA	COLOR TO MATCH SW6258 TRICORN BLACK
5	SOFFIT	HEWN ELEMENTS	NATURAL NORTHWESTERN SPRUCE	1X6, T&G, 3/4" REVEAL
6	COLUMNS	ECHELON STANDARD MASONRY	8"X4"X16" - SALT AND PEPPER	



ARMET DAVIS NEWLOVE & ASSOCIATES, AIA ARCHITECTS

1330 OLYMPIC BLVD.
SANTA MONICA, CALIFORNIA 90404
PH 310 452-5533 FAX 310 450-4742

THE USE OF THESE PLANS AND SPECIFICATIONS SHALL BE RESTRICTED TO THE ORIGINAL SITE FOR WHICH THEY WERE PREPARED AND PUBLICATION THEREOF IS EXPRESSLY LIMITED TO SUCH USE. RE-USE, REPRODUCTION OR PUBLICATION BY ANY METHOD, IN WHOLE OR IN PART, IS PROHIBITED. TITLE TO THE PLANS AND SPECIFICATIONS REMAINS WITH THE ARCHITECT WITHOUT PREJUDICE. VISUAL CONTACT WITH THESE PLANS AND SPECIFICATIONS SHALL CONSTITUTE PRIMA FACIE EVIDENCE OF THE ACCEPTANCE OF THE RESTRICTIONS.



EXPIRES 12/31/2024

Project No: AZ1408
Dutch Bros Coffee - New Freestanding Store
DB2550 - A2 PROTOTYPE
3406 S ELLSWORTH ROAD MESA, AZ 85212

DATE: 08/04/2023
REV: DATE: DESCRIPTION:

SHEET NAME:

BUILDING ELEVATIONS
COLOR

SHEET NUMBER:

A6.1

© 2019 DB Franchising USA, LLC

The name DUTCH BROS. and all associated logos, distinctive designs, content, information, and other materials featured, displayed, contained herein, and made available by Dutch Bros., including but not limited to, the "lock and leaf" of the establishments and products, all text, images, colors, configurations, and other materials, are trademarks, service marks, or registered trademarks (collectively, the "Materials") of Dutch Bros. Franchising USA, LLC and are protected by copyright, trademark, trade dress, patent, and/or other intellectual property rights and unfair competition laws under the United States and foreign laws.

GENERAL NOTES:

- COORDINATE WITH STRUCTURAL DRAWINGS FOR SIZES, CONNECTION DETAILS OF WOOD FRAMING, JOISTS, GIRDERS, WOOD DECKING AND OTHER STRUCTURAL COMPONENTS.
- COORDINATE WITH STRUCTURAL DRAWINGS FOR REINFORCEMENT OF CONCRETE SLABS, FOOTINGS, FOUNDATIONS, AND WALL TYPES.
- COORDINATE WINDOW TYPES WITH FLOOR PLANS AND FRAME TYPES. PROVIDE BITUMINOUS DAMPROOFING ON ALL EXTERIOR WALLS BELOW GRADE LEVEL AS INDICATED IN THE SPECIFICATIONS.
- AIR BARRIER JOINTS AND SEAMS SHALL BE SEALED, INCLUDING SEALING TRANSITIONS IN PLACES AND CHANGES IN MATERIALS. THE JOINTS AND SEALS SHALL BE SECURELY INSTALLED IN OR ON THE JOINT FOR ITS ENTIRE LENGTH SO AS NOT TO DISLODGE, LOOSEN OR OTHERWISE IMPAIR ITS ABILITY TO RESIST POSITIVE AND NEGATIVE PRESSURE FROM WIND, STACK EFFECT AND MECHANICAL VENTILATION.
- PENETRATIONS OF THE AIR BARRIER SHALL BE CAULKED, GASKETED OR OTHERWISE SEALED IN A MANNER COMPATIBLE WITH THE CONSTRUCTION MATERIALS AND LOCATION.



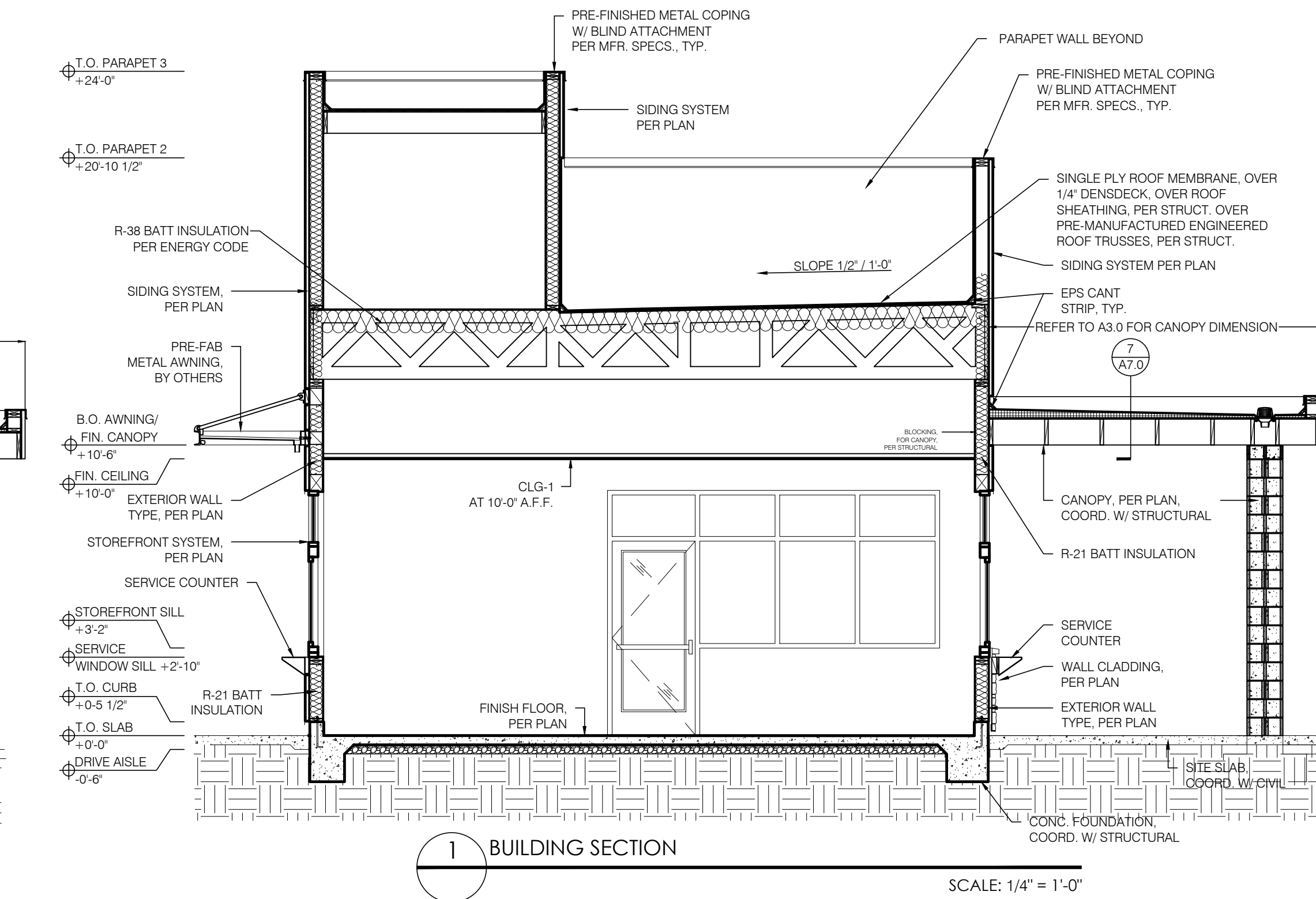
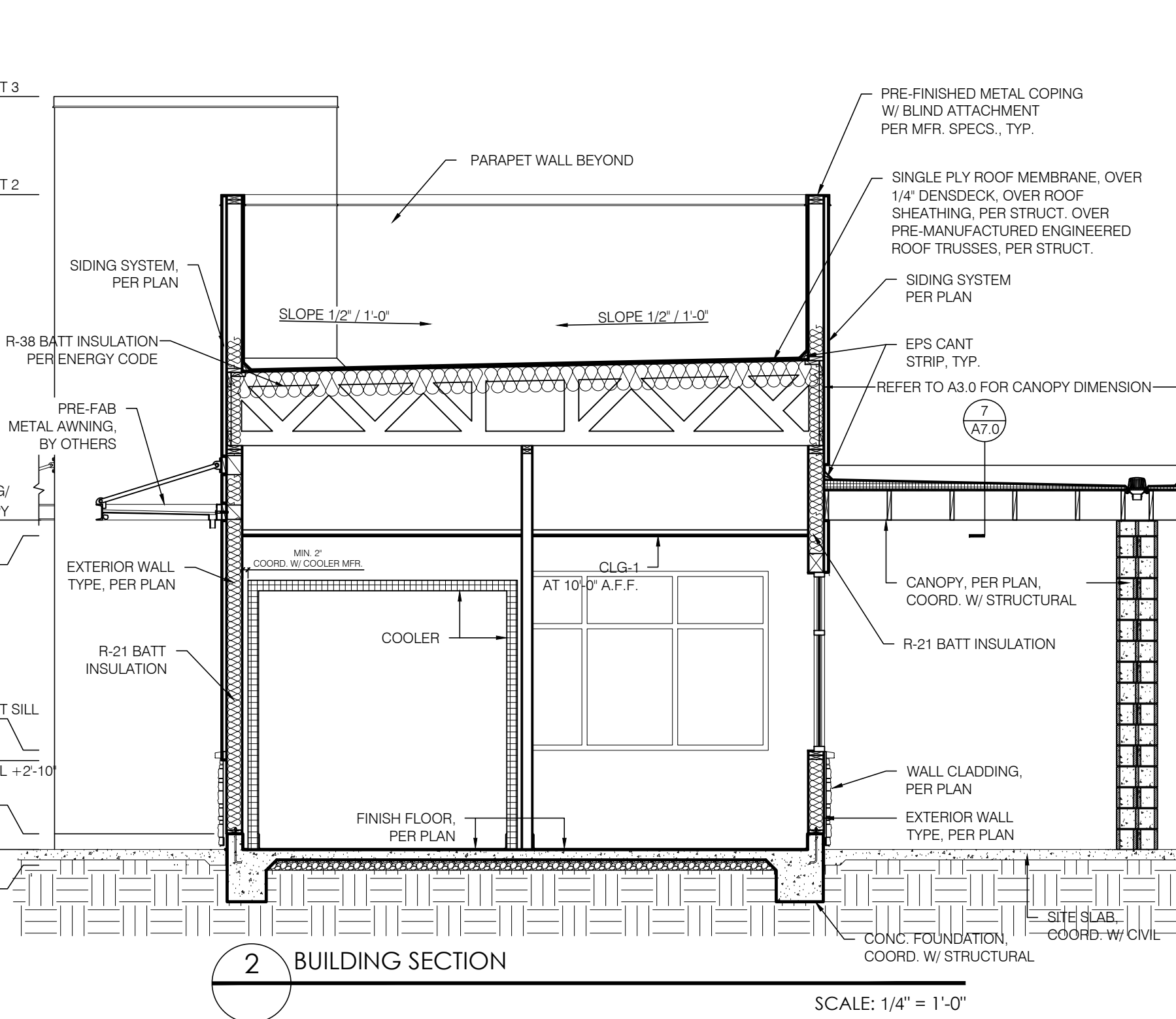
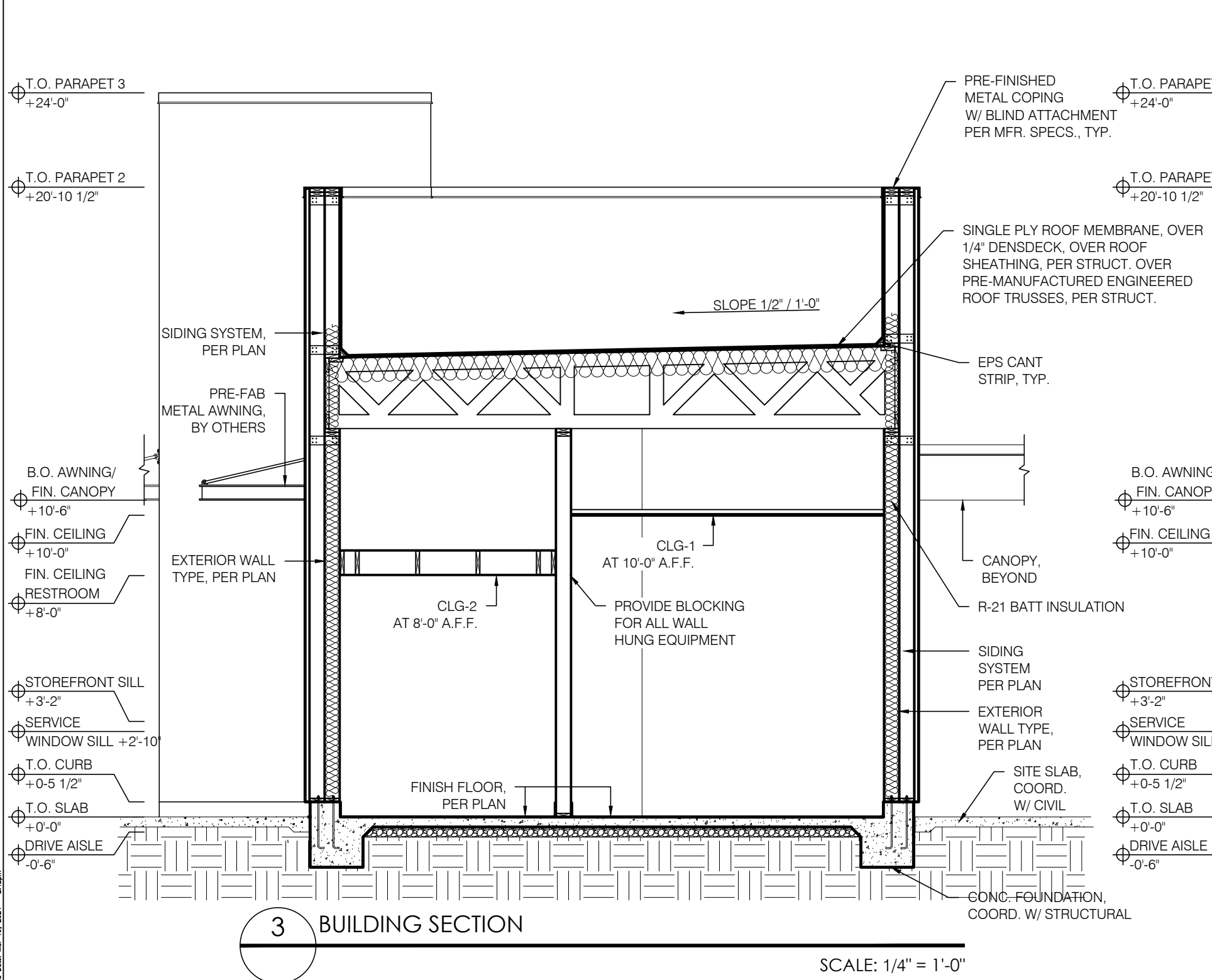
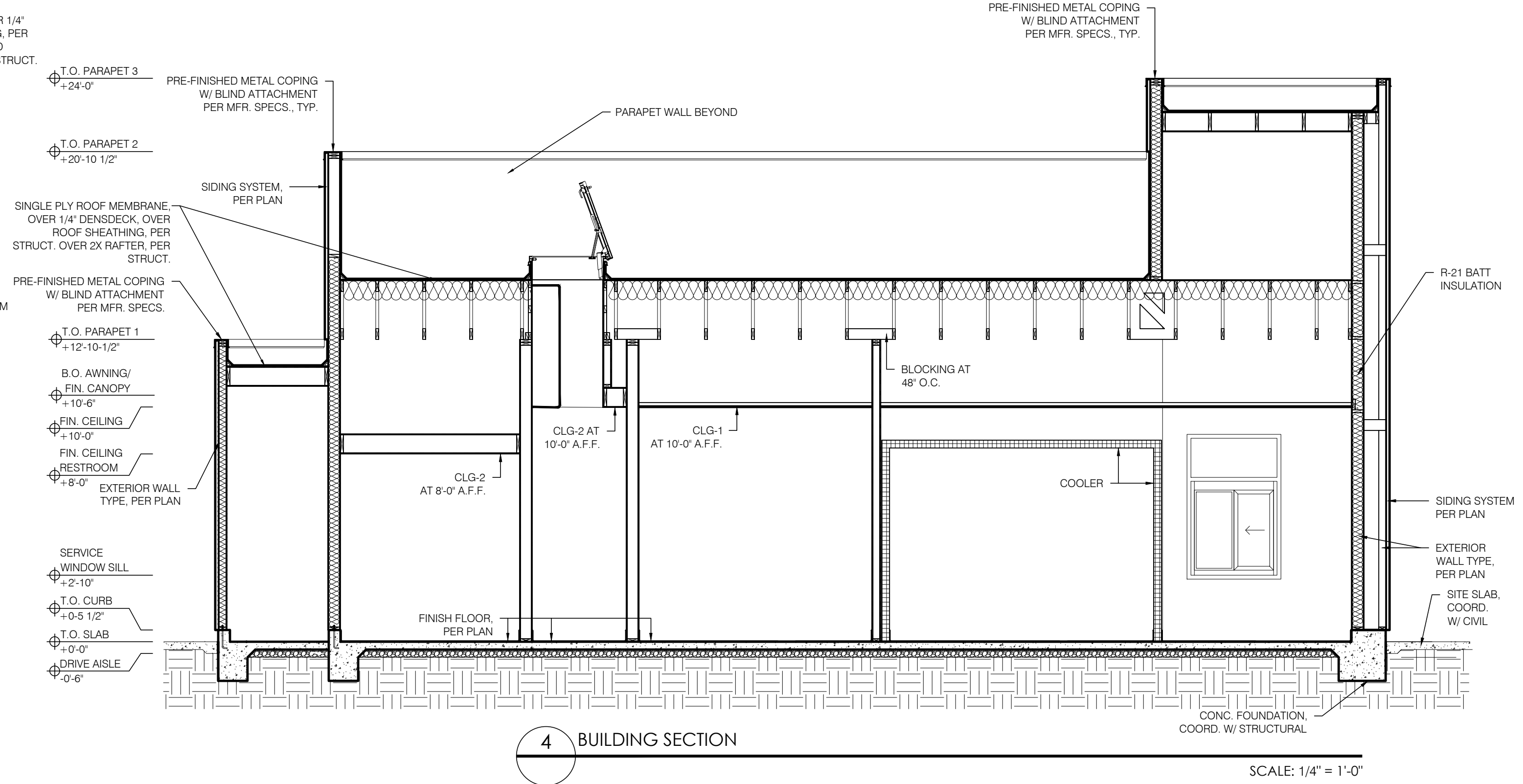
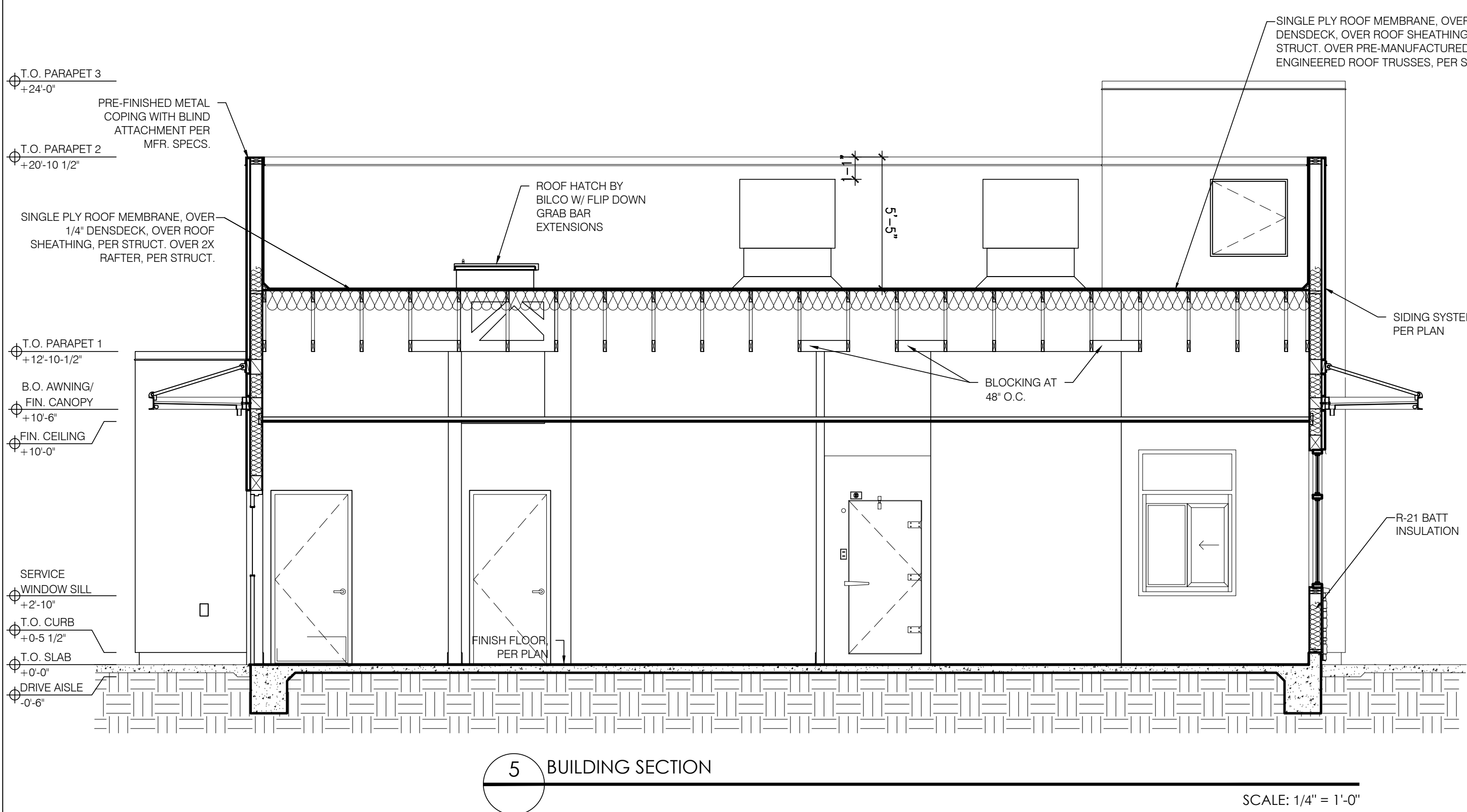
ARMÉT DAVIS NEWLOVE & ASSOCIATES, AIA ARCHITECTS

1330 OLYMPIC BLVD.
SANTA MONICA, CALIFORNIA 90404
PH 310 452-5533 FAX 310 450-4742

THE USE OF THESE PLANS AND SPECIFICATIONS SHALL BE RESTRICTED TO THE ORIGINAL SITE FOR WHICH THEY WERE PREPARED AND PUBLICATION THEREOF IS EXPRESSLY LIMITED TO SUCH USE. RE-USE, REPRODUCTION OR PUBLICATION BY ANY METHOD, IN WHOLE OR IN PART, IS PROHIBITED. TITLE TO THE PLANS AND SPECIFICATIONS REMAINS WITH THE ARCHITECT WITHOUT PREJUDICE. VISUAL CONTACT WITH THESE PLANS AND SPECIFICATIONS SHALL CONSTITUTE PRIMA FACIE EVIDENCE OF THE ACCEPTANCE OF THE RESTRICTIONS.



EXPIRES 12/31/2024



Project No: AZ1408
Dutch Bros Coffee - New Freestanding Store
DB2550 - A2 PROTOTYPE
3406 S ELLSWORTH ROAD MESA, AZ 85212

DATE: 08/04/2023
REV: DATE: DESCRIPTION:

SHEET NAME:

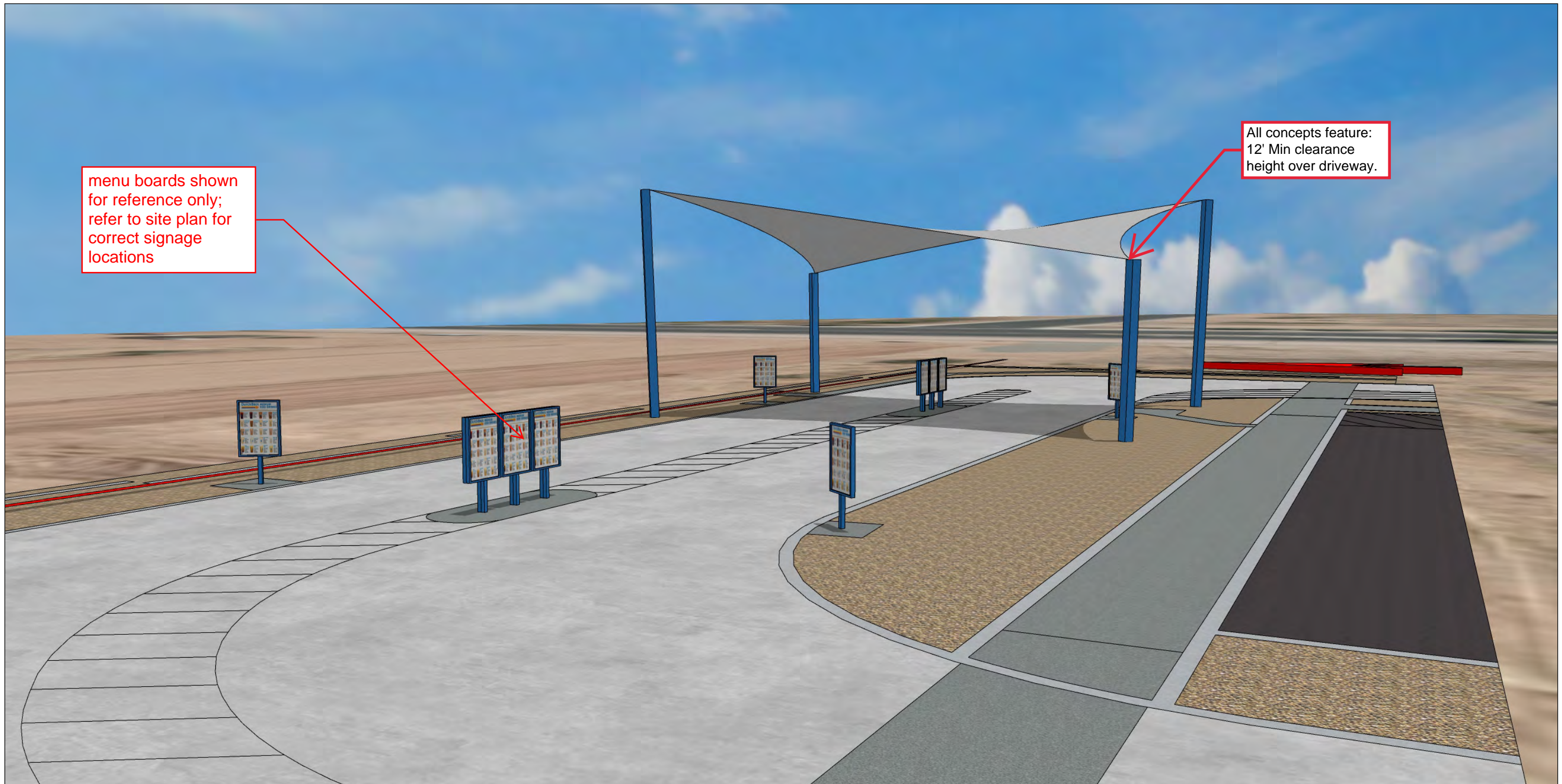
BUILDING SECTIONS

SHEET NUMBER:

A7.0

© 2019 DB Franchising USA, LLC

Y:\Active\Projects\DutchBros\A21408-A21408-3406 S Ellsworth Rd - Mesa_A21408\A21408-A21408-BUILDING SECTIONS - A21408.dwg 3/19/2023 2:42:10 PM, Title



menu boards shown for reference only; refer to site plan for correct signage locations

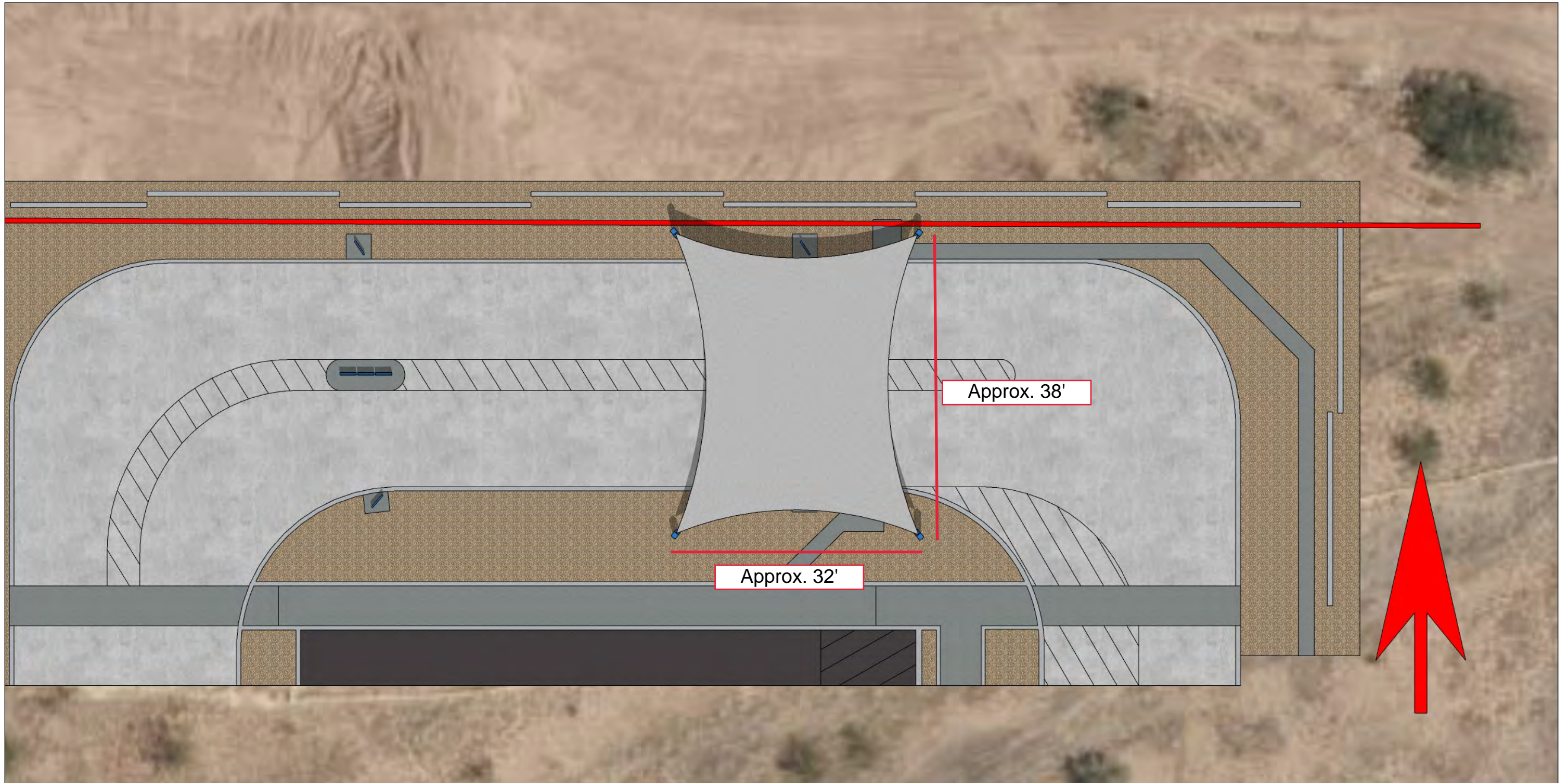
All concepts feature: 12' Min clearance height over driveway.

Cover
Perspective View

Dutch Bros Coffee - Mesa, AZ (AZ1408) Fabric Shade Structure



Presentation by: Josh Henderson
April 1, 2024
Preliminary NOT FOR CONSTRUCTION

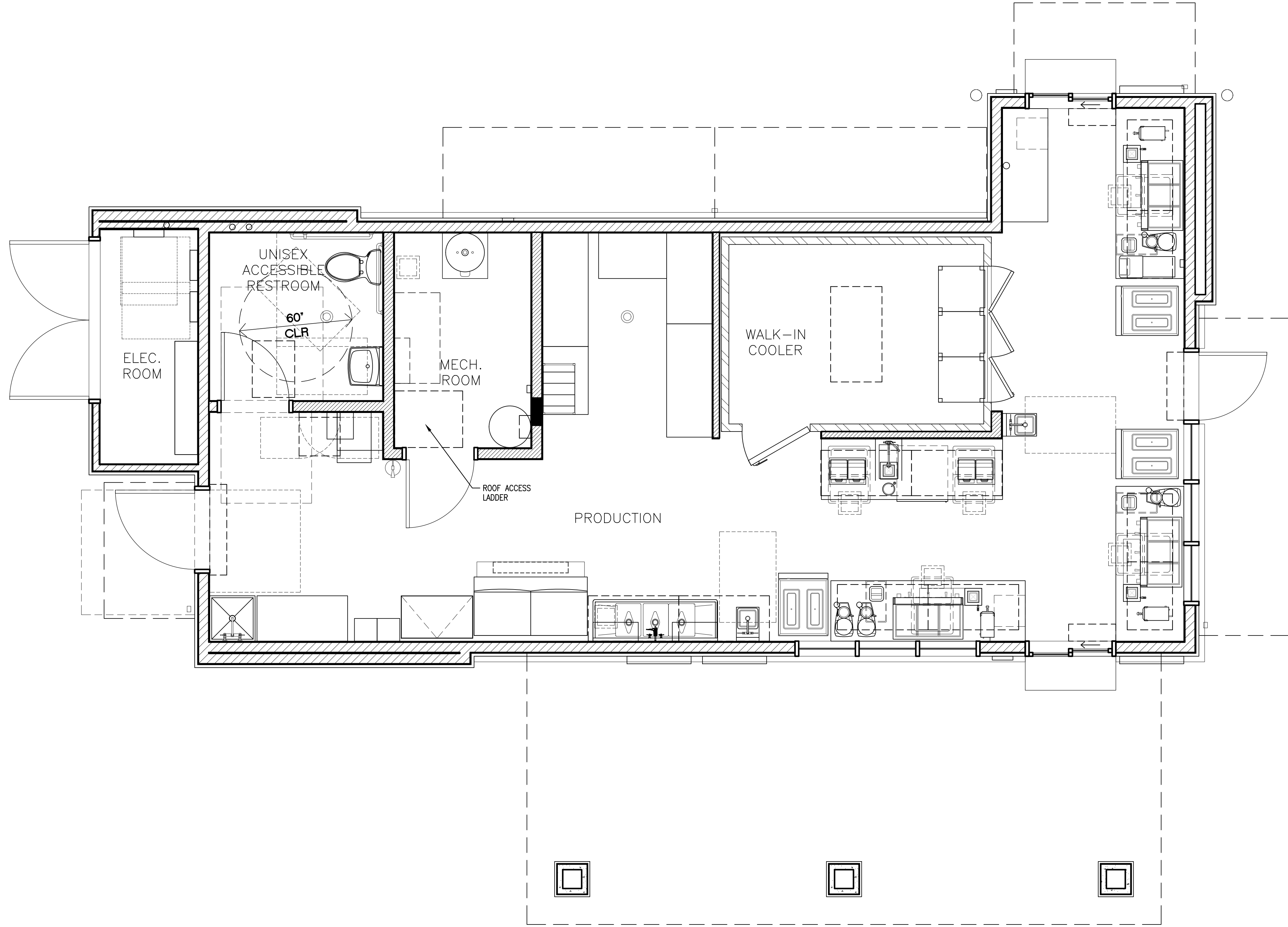


Plan View

Dutch Bros Coffee - Mesa, AZ (AZ1408) Fabric Shade Structure



The name DUTCH BROS. and all associated logos, distinctive designs, content, information, and other materials featured, displayed, contained herein, and made available by Dutch Bros., including but not limited to, the "look and feel" of the establishments and products, all text, images, colors, configurations, and/or other intellectual property rights and unfair competition laws under the United States and foreign laws.



1 EQUIPMENT PLAN

SCALE: 3/8" = 1'-0"



ARMET DAVIS NEWLOVE & ASSOCIATES, AIA ARCHITECTS

1330 OLYMPIC BLVD.
SANTA MONICA, CALIFORNIA 90404
PH 310 452-5533 FAX 310 450-4742

THE USE OF THESE PLANS AND SPECIFICATIONS SHALL BE RESTRICTED TO THE ORIGINAL SITE FOR WHICH THEY WERE PREPARED AND PUBLICATION THEREOF IS EXPRESSLY LIMITED TO SUCH USE. RE-USE, REPRODUCTION OR PUBLICATION BY ANY METHOD, IN WHOLE OR IN PART, IS PROHIBITED. TITLE TO THE PLANS AND SPECIFICATIONS REMAINS WITH THE ARCHITECT WITHOUT PREJUDICE. VISUAL CONTACT WITH THESE PLANS AND SPECIFICATIONS SHALL CONSTITUTE PRIMA FACIE EVIDENCE OF THE ACCEPTANCE OF THE RESTRICTIONS.



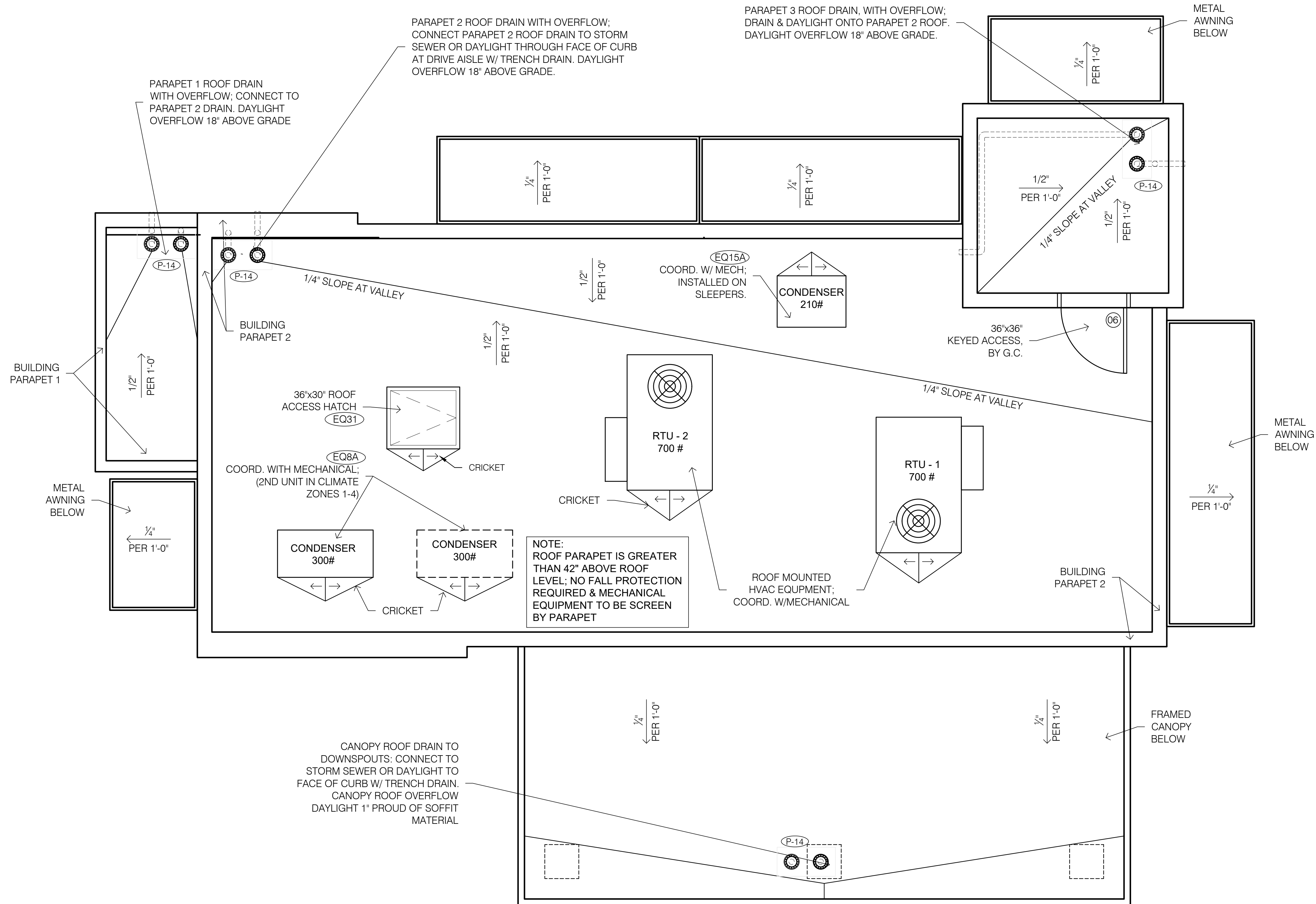
EXPIRES 12/31/2024

Project No: AZ1408
Dutch Bros Coffee - New Freestanding Store
DB2550 - A2 PROTOTYPE
3406 S ELLSWORTH ROAD MESA, AZ 85212

DATE:	DESCRIPTION:
08/04/2023	

SHEET NAME:
EQUIPMENT PLAN/
ENLARGED PLANS

SHEET NUMBER:
A1.0



1 ROOF PLAN

SCALE: 3/8" = 1'-0"



ARMÉT DAVIS NEWLOVE & ASSOCIATES, AIA ARCHITECTS

1330 OLYMPIC BLVD.
SANTA MONICA, CALIFORNIA 90404
PH 310 452-5533 FAX 310 450-4742

THE USE OF THESE PLANS AND SPECIFICATIONS SHALL BE RESTRICTED TO THE ORIGINAL SITE FOR WHICH THEY WERE PREPARED AND PUBLICATION THEREOF IS EXPRESSLY LIMITED TO SUCH USE. RE-USE, REPRODUCTION OR PUBLICATION BY ANY METHOD, IN WHOLE OR IN PART, IS PROHIBITED. TITLE TO THE PLANS AND SPECIFICATIONS REMAINS WITH THE ARCHITECT WITHOUT PREJUDICE. VISUAL CONTACT WITH THESE PLANS AND SPECIFICATIONS SHALL CONSTITUTE PRIMA FACIE EVIDENCE OF THE ACCEPTANCE OF THE RESTRICTIONS.



EXPIRES 12/31/2024

Project No: AZ1408
Dutch Bros Coffee - New Freestanding Store
DB2550 - A2 PROTOTYPE
3406 S ELLSWORTH ROAD MESA, AZ 85212

DATE: 08/04/2023

REV: DATE	DESCRIPTION:

SHEET NAME:

ROOF PLAN/ ROOF DETAILS

SHEET NUMBER:

A4.0