

Speed Limit Establishment – Williams Field Road

City Council Study Session
October 19, 2023



RJ Zeder, Transportation Director
Erik Guderian, Assistant Transportation Director
Ryan Hudson, City Traffic Engineer



- Mesa Speed Limit Establishment Process
- Factors to Setting Speed Limits
- Staff Recommendations for Williams Field Road
- Transportation Advisory Board Coordination
- Final Direction for Introduction to Council

Mesa City Code – Title 10

Title 10, Chapter 4

- Listing of street segments associated to posted speed limits
 - Speed limits established by means of Ordinance (City Council approval)

ORDINANCE NO. *5666*

AN ORDINANCE OF THE CITY COUNCIL OF THE CITY OF MESA, ARIZONA, AMENDING SECTIONS 10-4-4 & 10-4-5 OF THE MESA CITY CODE PERTAINING TO SPEED LIMITS WITHIN THE CITY LIMITS ON WARNER ROAD; PROVIDING FOR SEVERABILITY; AND PROVIDING CIVIL SANCTIONS FOR THE VIOLATION THEREOF.

THEREFORE, BE IT ORDAINED by the Mayor and City Council of the City of Mesa, Maricopa County, as follows:

Text written in **BOLD ALL CAPS** indicates new language.
Strikethrough fonts indicate deletions.

Section 1: That Section 10-4-4 of the Mesa City Code is amended by changing the following provision in alphabetical order and thereby describing streets on which a person shall not exceed a speed of forty (40) miles per hour:

WARNER ROAD	FROM A POINT SIX HUNDRED SEVENTY-FIVE FEET (675') WEST OF 80TH STREET TO ELLSWORTH ROAD;
--------------------	--

Section 2: That Section 10-4-5 of the Mesa City Code is amended by changing the following provision in alphabetical order and thereby describing streets on which a person shall not exceed a speed of thirty-five (35) miles per hour:

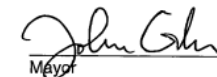
WARNER ROAD	FROM POWER ROAD TO A POINT ONE THOUSAND FIVE HUNDRED SIXTY FEET (1,560') EAST OF POWER ROAD;
	FROM ELLSWORTH ROAD TO EASTMARK PARKWAY;

Section 3: Severability. If any section, subsection, sentence, clause, phrase, or portion of this Ordinance or any part of the material adopted herein by reference is for any reason held to be invalid or unconstitutional by the decision of a court of competent jurisdiction, such decision shall not affect the validity of the remaining portions thereof.

Section 4: Civil Traffic Violations: Any violation of or failure or refusal to do or perform any act required by the provisions of this ordinance or of the Mesa City Code as amended herein shall constitute a civil traffic violation and be subject to the provisions of Title 10, Chapter 7 of the Mesa City Code.

PASSED AND ADOPTED by the City council of the City of Mesa, Maricopa County, Arizona, this 24th day of January, 2022.

APPROVED


Mayor

ATTEST:


City Clerk

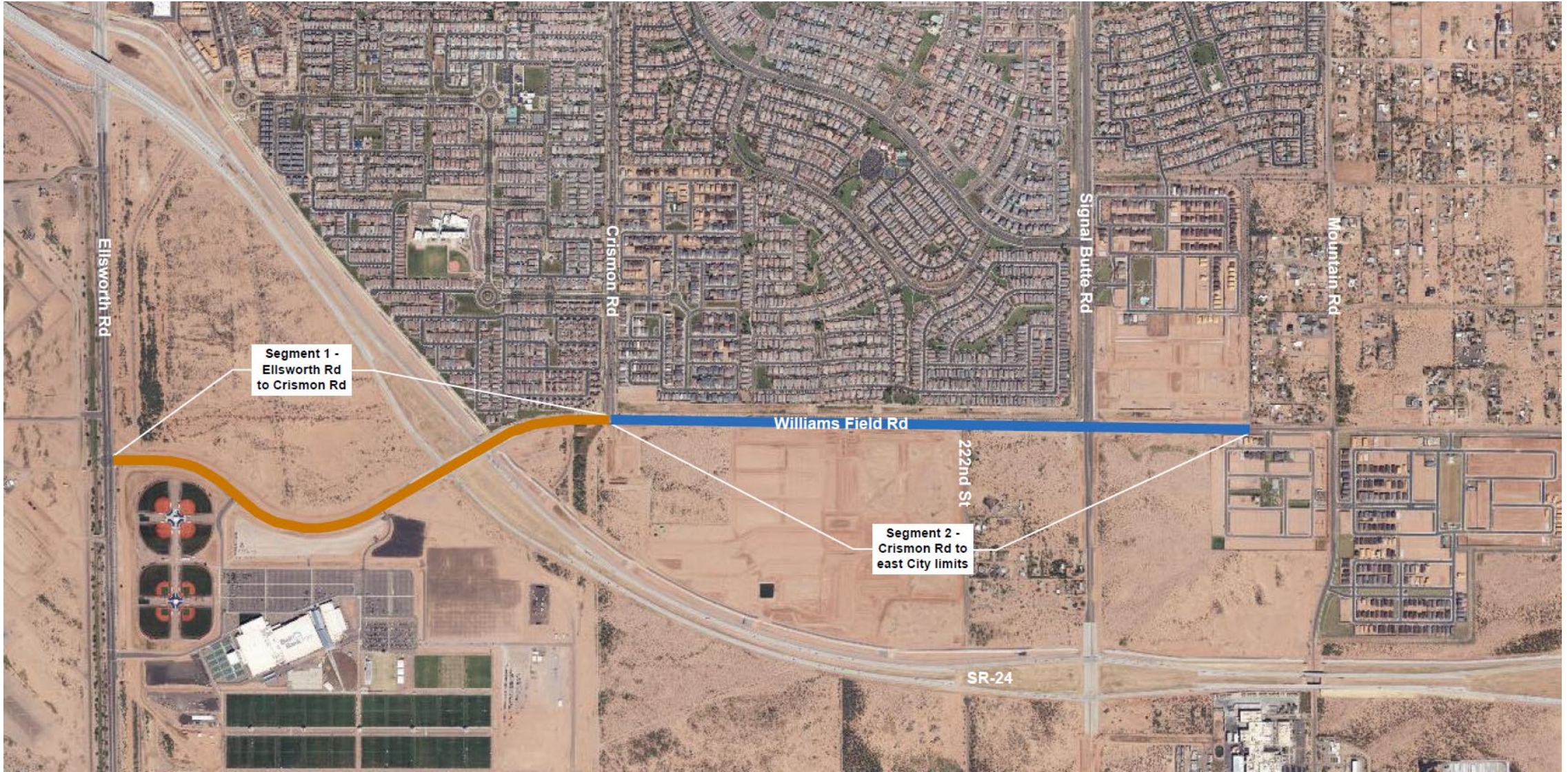


Approach & Considerations

- Recognition that a range of factors should be considered:
 - Street use
 - Overall context & character
 - Conflict density
 - Geometry
 - Traffic characteristics
- National research has found that drivers will operate at the speed they are comfortable driving based on roadway characteristics.



Williams Field Rd Corridor



Segment 1 – Ellsworth to Crismon

Alignment Study:

- Horizontal curves
 - Superelevation
- SR-24 alignment
- PMGA plans & Gateway Blvd
- Future development



Segment 1 – Ellsworth to Crismon

Staff Recommendation:

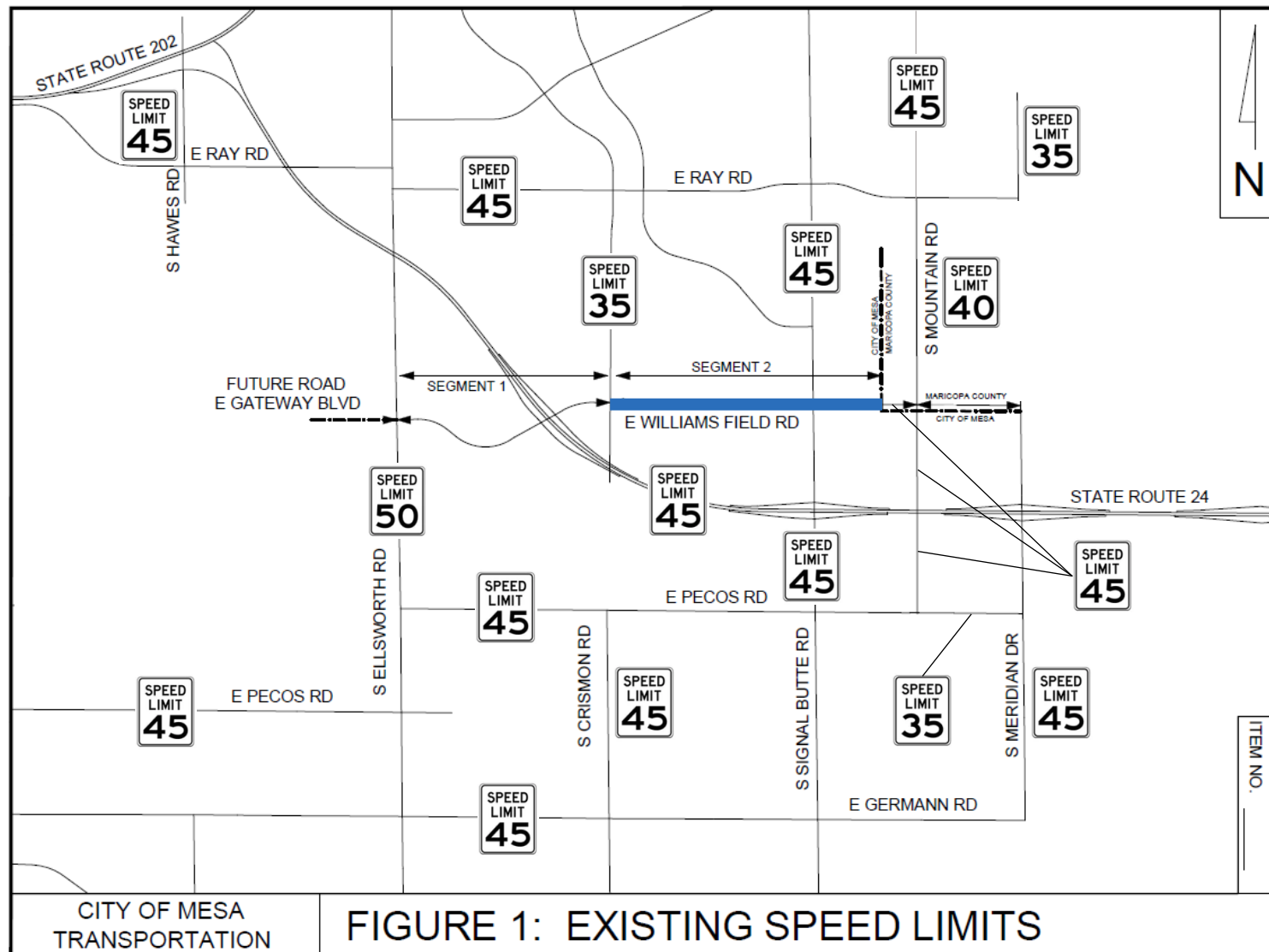
Establish a speed limit of 40 mph on Williams Field Rd from Ellsworth Rd to Crismon Rd by means of Ordinance & amendment of Section 10-4-4 of City Code.

- Existing in City Code: 40 mph from west City limits to Innovation Way
- Existing posted speed limit of 45 mph

Segment 2 – Crismon to East City Limits

Williams Field Rd:

- No horizontal curves
- Adjacent street network
- Future development



ITEM NO. _____

Segment 2 – Crismon to East City Limits

Staff Recommendation:

Establish a speed limit of 45 mph on Williams Field Rd from Crismon Rd to the east City limits by means of Ordinance & amendment of Section 10-4-3 of City Code.

- Existing posted speed limit of 45 mph

Williams Field Rd Speed Limits

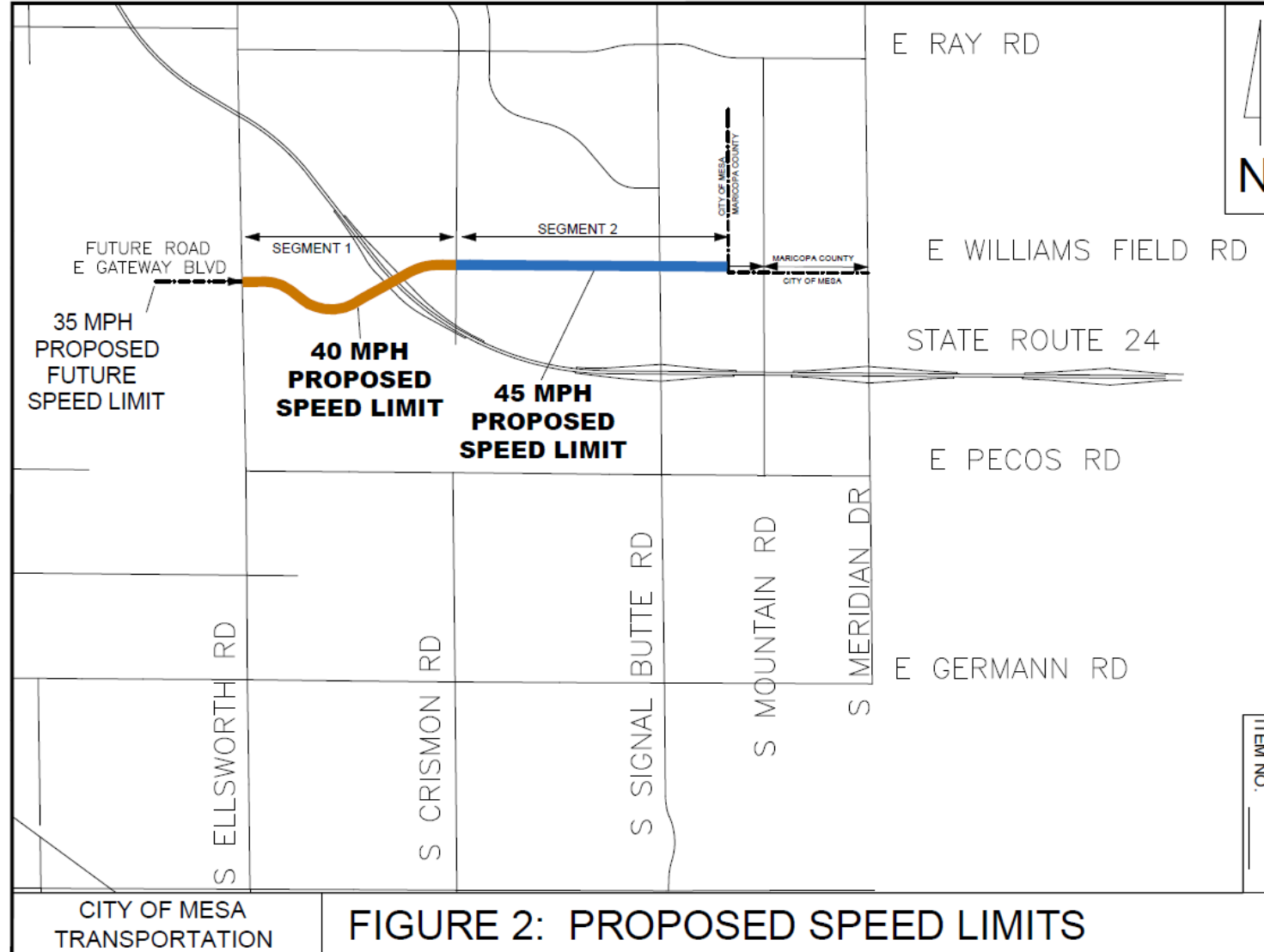


FIGURE 2: PROPOSED SPEED LIMITS

May 2023 TAB Meeting:

The TAB made a motion with an amendment to staff's recommendation:

Staff's recommendation –

- Establish a speed limit of 40 mph on Williams Field Road from Ellsworth Road to Crismon Road (Segment 1).
- Establish a speed limit of 45 mph on Williams Field Road from Crismon Road to the east City limits (Segment 2).

TAB's motion –

- Establish a speed limit of 40 mph on Williams Field Road from Ellsworth Road to the east City limits.

Rationale

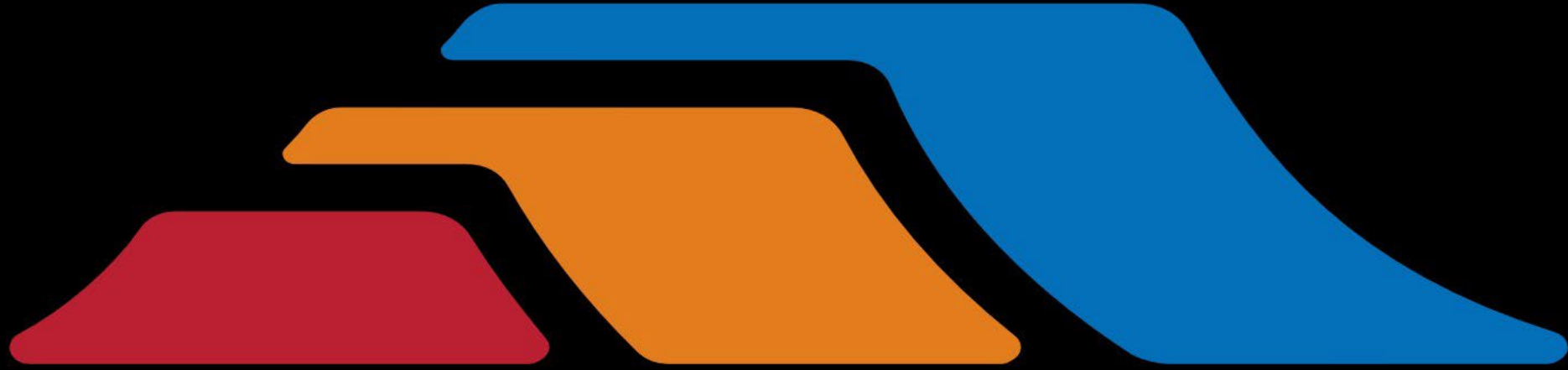
- Williams Field Road does not have separated/buffered bike lane facilities
- Slow traffic down
- Keep a consistent posted speed limit of 40 mph to the west.

Next Steps:

- Council direction
- Ordinance introduction
- Ordinance approval
- Speed limit goes into effect

Questions/Discussion





mesa·az