

City Council  
Study Session  
December 1, 2020

# The Studios @ Mesa City Center

**Jeff McVay**  
Manager of Downtown Transformation

**Ji Mi Choi**  
Associate Vice President, Knowledge  
Enterprise

Founding Executive Director, J. Orin  
Edson Entrepreneurship and Innovation  
Institute



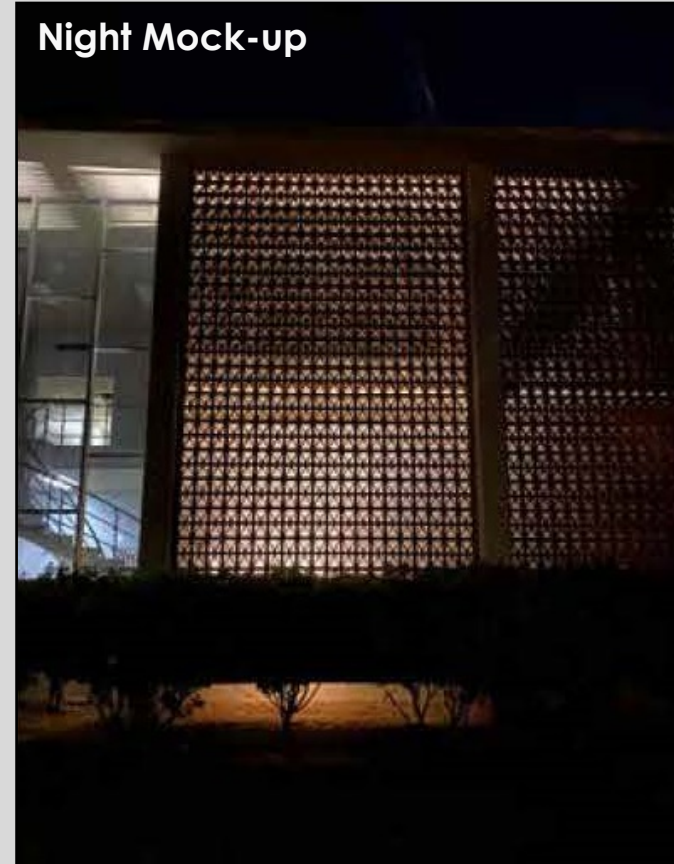
Main Entrance



# Exterior Design

---

Night Mock-up



Back Entrance – South Glazing



# Exterior Design

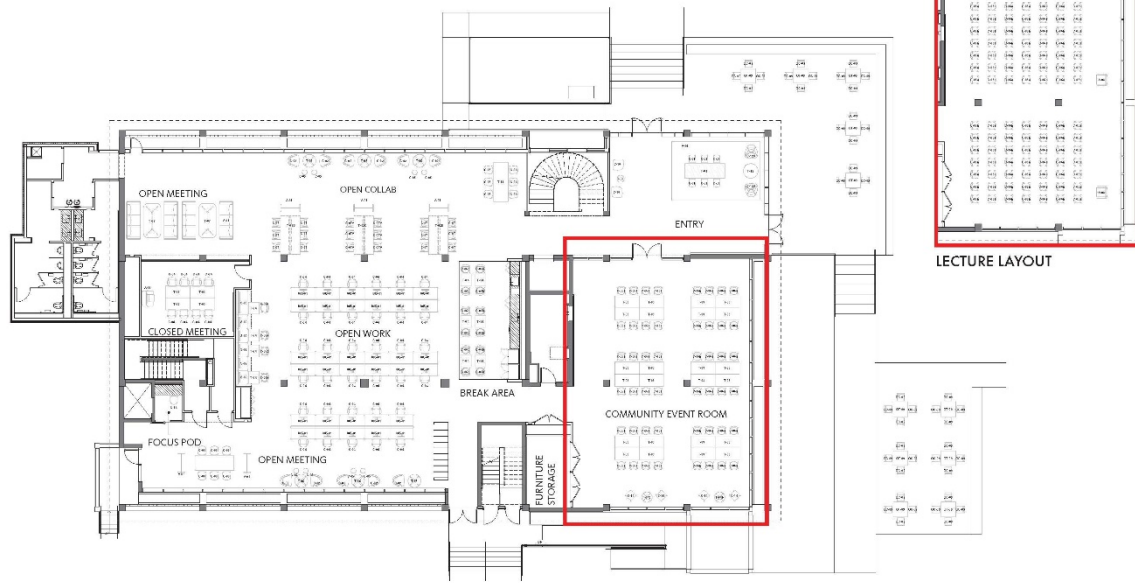
Connector Plaza



Outboard Core

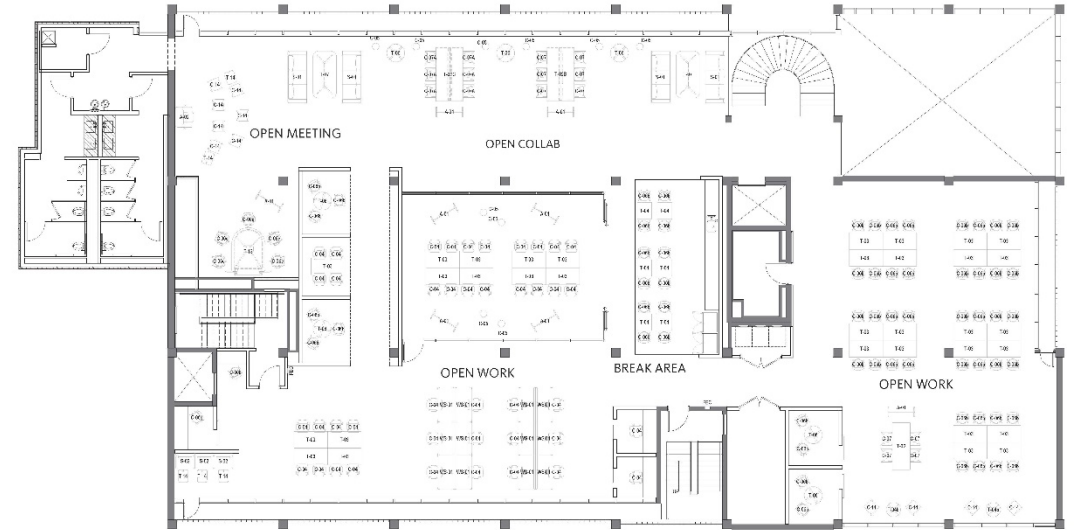


# 1st Floor Plan



# Floor Plans

## 2nd Floor Plan



## Basement Floor Plan



Entry



# Interior Design

Community Event Room - Today



Entry - Today



Community Event Room



Open Collaboration

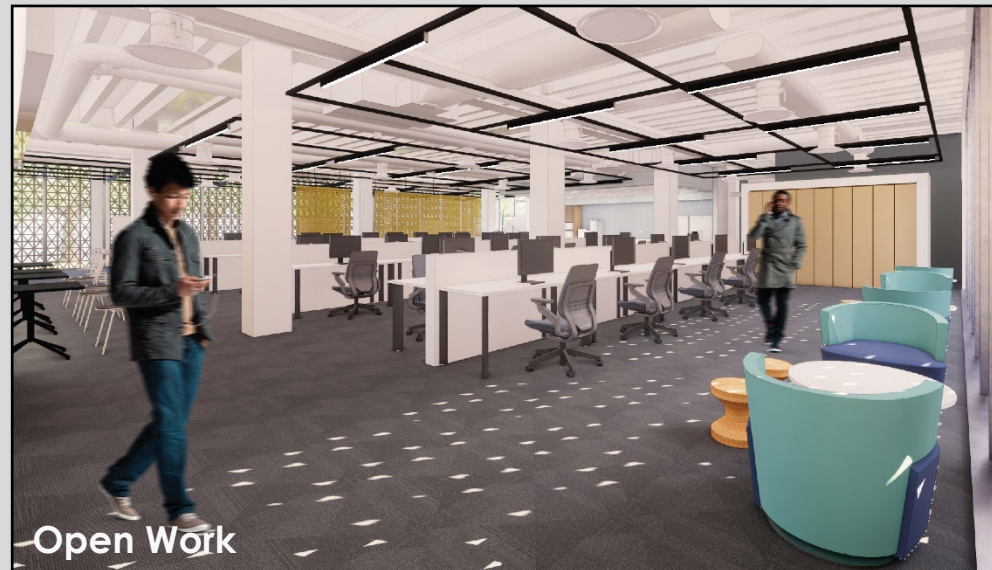


# Interior Design

Open Work - Today



Open Collab - Today



Open Work

# Interior Design



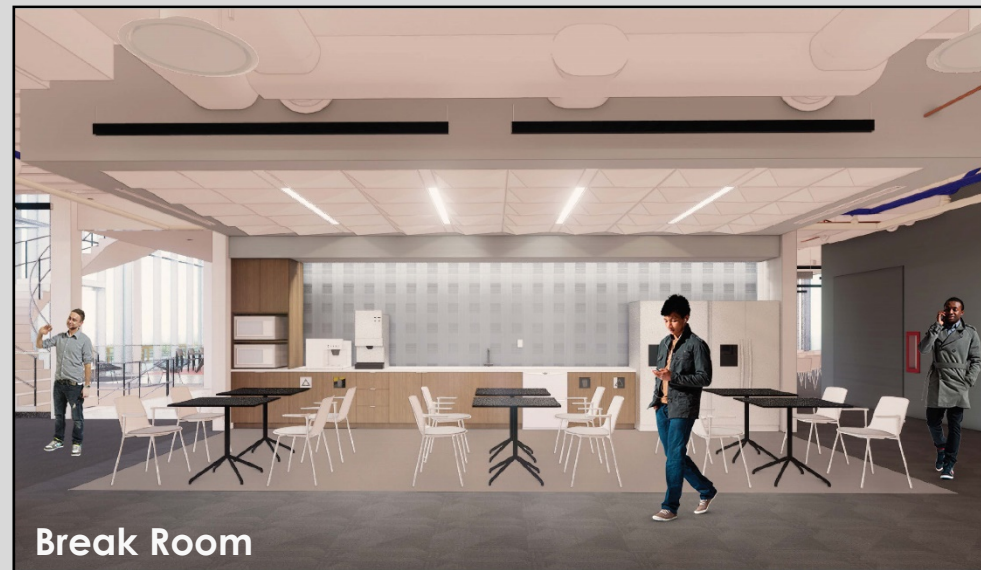
Meeting Area



Break Room - Today



Meeting Area - Today



Break Room

# Program

---

- Partnership with ASU Entrepreneurship and Innovation Institute
- Public gateway to the downtown Innovation District
- Adaptable, open design that allows wide variety of activities
  - Public entrepreneurship and innovation workshops and events
  - Entrepreneurship training
  - Mentoring
  - Incubator and accelerator programs
- Community event space
- Corporate partnerships
- Ideate, prototype, incubate







# DISCUSSION AND QUESTIONS