



Sirrine House

Sirrine House Improvements Design Package
11/21/2024



Sirrine House

Schematic Design Package

Project Goals



RESPECT THE HISTORY

Beyond mere historical restoration, the City of Mesa has embarked on a creative journey to reimagine the Sirrine House as a dynamic space for the community. This project will be integrated into the overall design with a keen eye on preserving the historic aesthetic of the Sirrine House.

- Incorporate design elements that complement the historic features of the Sirrine House.
- Ensure that all renovations and modern features respect the original architecture and materials.



URBAN FARMING

Urban farming at the Sirrine House is not just about growing food; The Sirrine House will promote sustainable urban agriculture, showcasing farming practices that align with environmental stewardship. This feature will blend seamlessly into the historical landscape, demonstrating how the past can meet the future of sustainable living.

- Establish on-site agricultural production focused on sustainability.
- Implement techniques such as composting, rainwater harvesting, and organic farming.
- Promote the farm-to-table concept by supplying locally grown produce to the community.
- Integrate the farming area into educational and community programs.
- Use the site as a model for urban farming in a historic, urban setting.



EDUCATIONAL HUB

The Sirrine House will be a community hub for education, providing enriching experiences for learners of all ages. School programs, historical tours, urban farming workshops, cut flowers, and cooking classes will all find a home within this historical site.

- Create educational programs centered on the history of the Sirrine House and urban farming.
- Offer workshops on topics like sustainable agriculture, cooking with locally grown produce, and floriculture.
- Provide interactive learning experiences for all age groups, from children to adults.



PUBLIC EVENTS

The Sirrine House will serve as a versatile venue for community events such as farm-to-table food service, local farm produce selling, weekly food trucks, etc. From cultural gatherings to educational workshops, this space will foster a sense of togetherness, making it a cornerstone of community life in Mesa.

- Host farm-to-table dinners, seasonal markets, and weekend food truck events.
- Organize community-based workshops, and cultural events.
- Provide a flexible space for small gatherings.
- Incorporate retail that promotes local culture, sustainability, and education.

Sirrine House

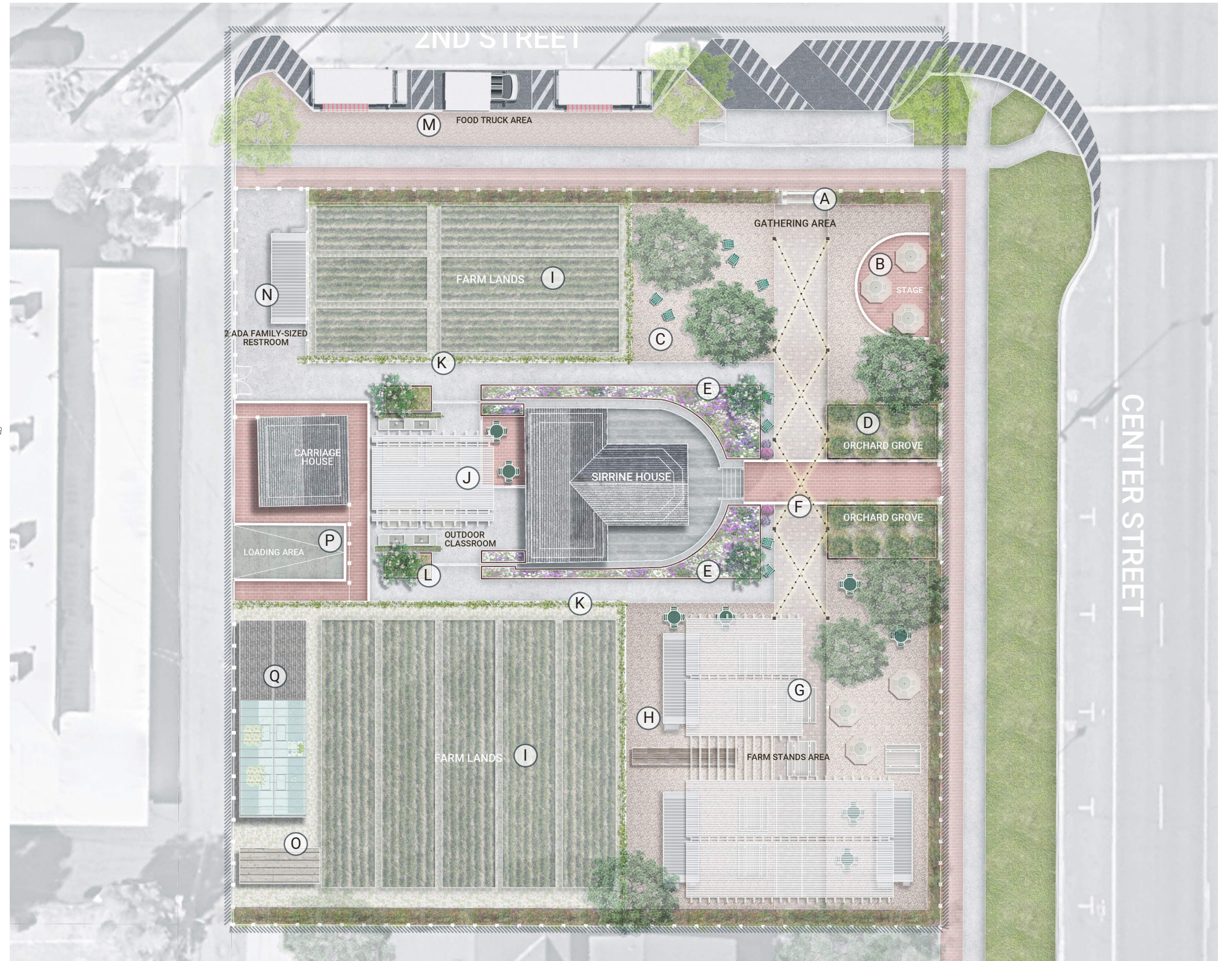
Schematic Design Package

DESIGN SITE PLAN

Legend

- (A) **Entryway Arbor**
with lady banks roses on the trellis
- (B) **Flexible Stage**
can serve as small event stage with outlet
- (C) **Gathering Area**
underneath the tree canopies
- (D) **Orchard Grove**
the formal welcoming entrance to the Sirrine House from Center St.
- (E) **Sirrine House Planters**
provide a buffer to the historical house
- (F) **Promenade String Lighting**
provide the illumination along the north to south promenade
- (G) **Canopy Structure**
Providing shade in the southeast dining area
- (H) **Farm Stands**
shipping container food vendors and cafes
- (I) **Farming Areas**
farm lands for the urban agriculture
- (J) **Back Patio**
outdoor classroom space with wash stands
- (K) **Green Fencing**
green fencing with grape vines
- (L) **Rain Gardens**
the planting areas will catch rainwater from the shade structure
- (M) **Food Trucks**
ponding at carriage house entrance
- (N) **Restrooms**
preserve and relocate on finished site
- (O) **Tool Shed / Operation Space**
preserve and relocate on finished site
- (P) **Loading Area**
not historic; potential repurpose
- (Q) **Green House**
potential repurpose as working sheds

Limited of Work Line



Sirrine House

Schematic Design Package



BIRD'S EYE PERSPECTIVE

Sirrine House

Schematic Design Package



BIRD'S EYE PERSPECTIVE

Sirrine House

Schematic Design Package



Sirrine House

Schematic Design Package



Sirrine House

Schematic Design Package



PERSPECTIVES FROM CENTER STREET

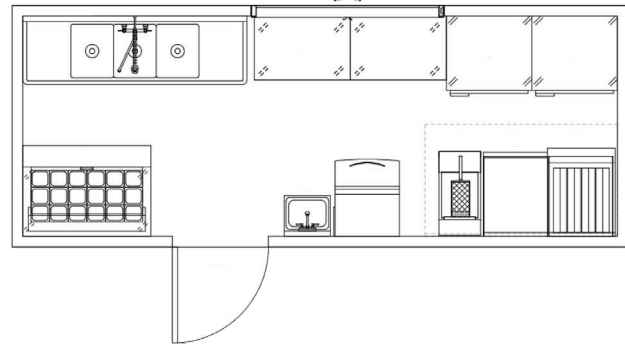
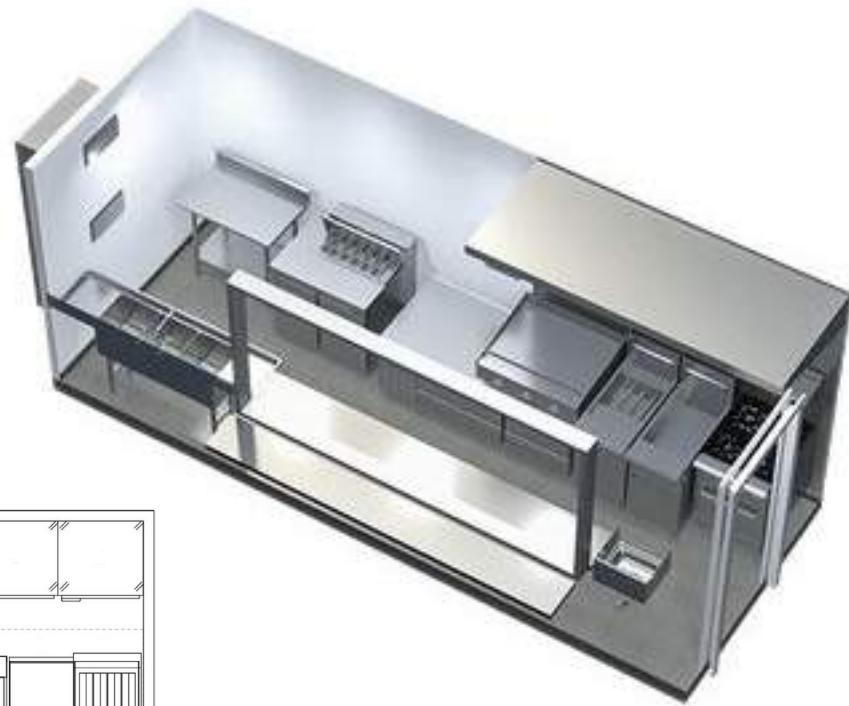
Sirrine House

Schematic Design Package



02 | FARM STANDS

MANUFACTURER: ROX BOX
 MODEL: SHIPPING CONTAINER KITCHENS
 SIZE: 20 FT x 8 FT
 COLOR: WHITE

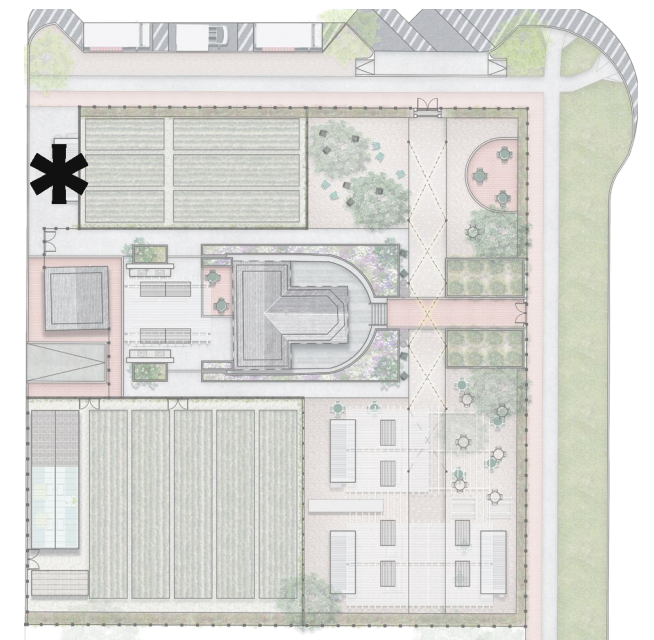
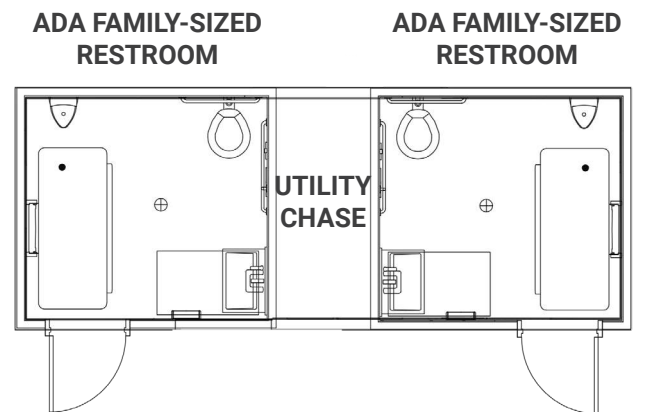


Sirrine House

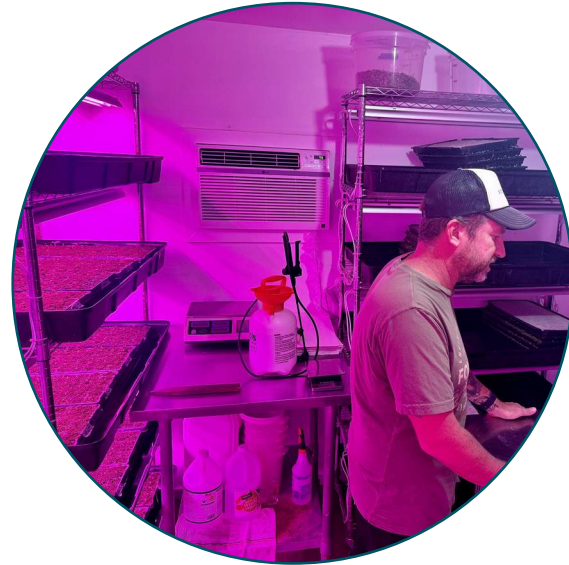
Schematic Design Package

RESTROOM

MANUFACTURER: ROX BOX
MODEL: SHIPPING CONTAINER RESTROOM - 2 ADA FAMILY-SIZED UNITS
SIZE: 20 FT x 8 FT
COLOR: WHITE



Greenhouse Alternatives



INDOOR SEED STARTING &
GROW LIGHT



REFRIGERATOR FOR CUT
FLOWERS



PACKING & OPERATION

