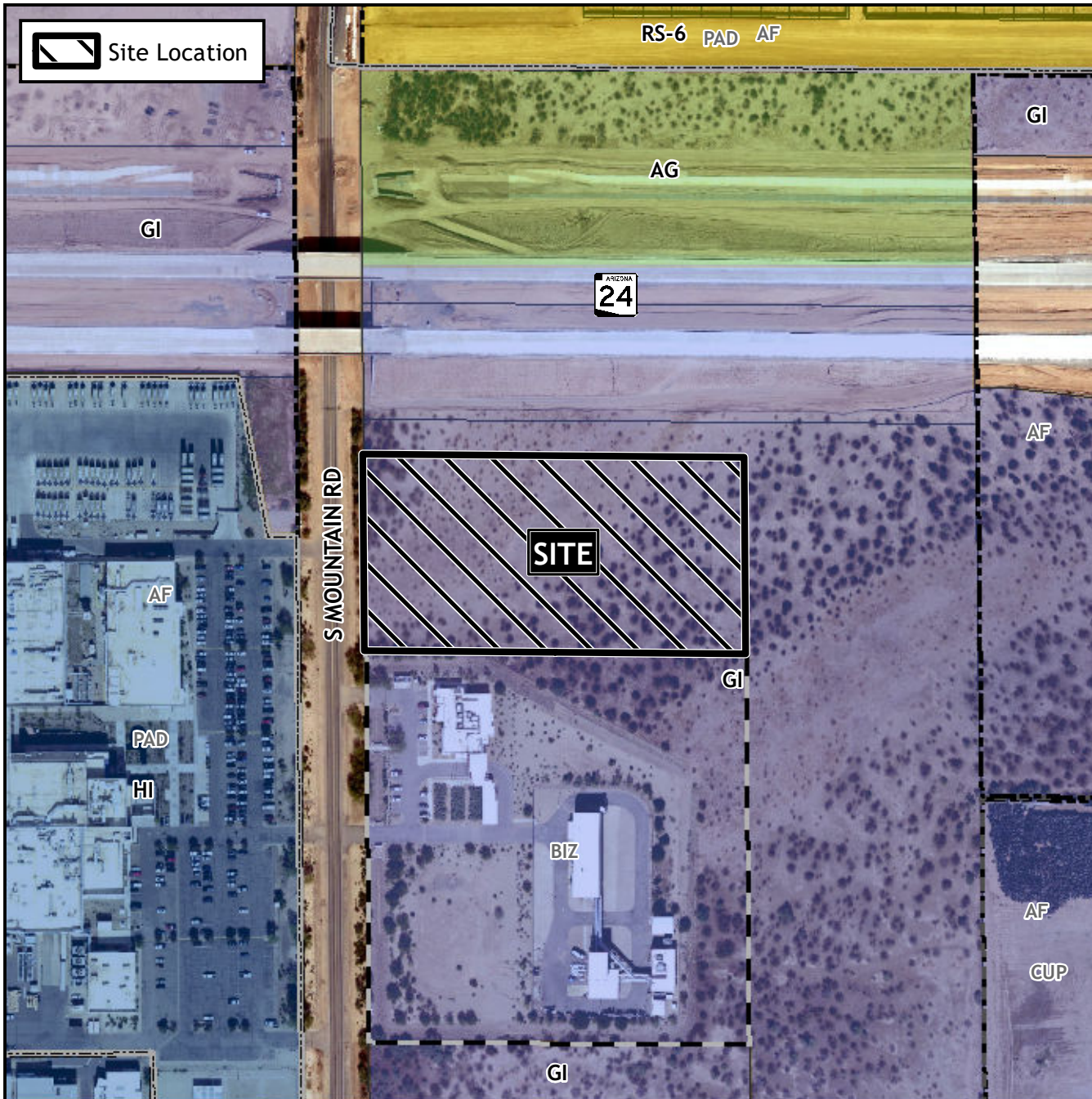


Planning and Zoning Vicinity Map: ZON21-01305



Case Details

CASE:

PRE-PLAT :

ZON21-01305

SITE / ADDRESS:

District 6. Within the 6400 block of South Mountain Road (east side). Located south of the Gateway 24 Freeway on the east side of Mountain Road. (5± acres).

REQUEST:

Site Plan Review. This request will allow for an industrial development.

