

Building Elevations
for
Higley and Main Apartment Homes
Mesa Arizona
10-27-2024

- MATERIAL / PAINT LEGEND**
- 1.1 STUCCO: HORIZ. RAKE
 - 1.2 STUCCO: STIPPLED FINISH WITH REVEALS AS SHOWN
 - 1.3 HORIZONTAL SIDING: ALLURA LAP SIDING, 10 3/4" EXPOSURE
 - 1.4 HORIZONTAL SIDING: ALLURA LAP SIDING, PATTERNED, 4" EXPOSURE
 - 1.5 METAL ENTRY CANOPY TRELLIS: PAINTED
 - 1.6 SCREENED CASEMENT WINDOW
 - 1.7 STOREFRONT WINDOW SYSTEM: CLEAR ANODIZED ALUMINUM FRAME
 - 1.8 FIXED WINDOW
 - 1.9 METAL RAILINGS & STRINGERS: PAINTED
 - 1.10 METAL HORIZONTAL SHADE BROW: PAINTED
 - 1.11 STACKED STONE 4" HIGH FINISH SILVER LINING

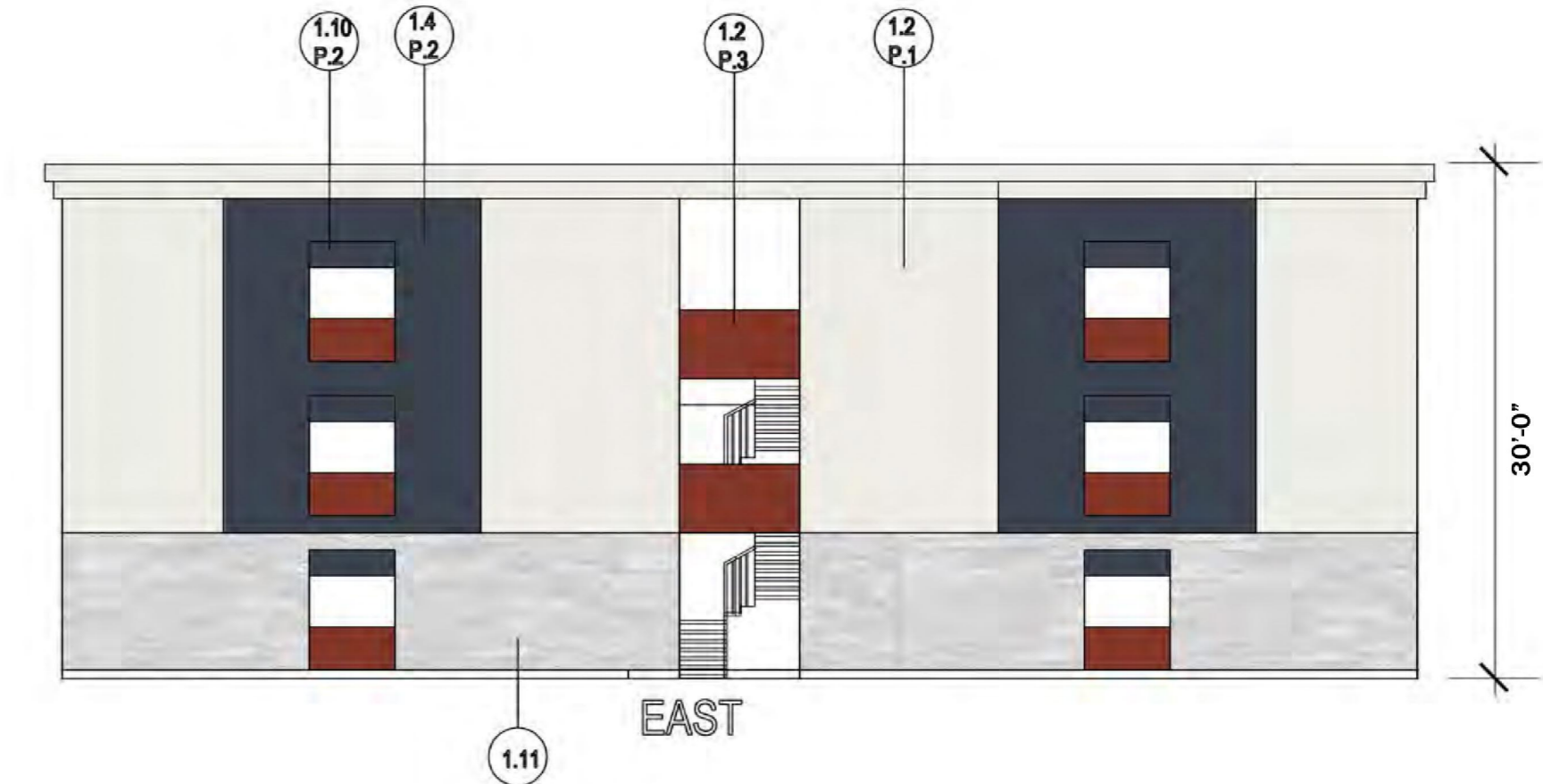
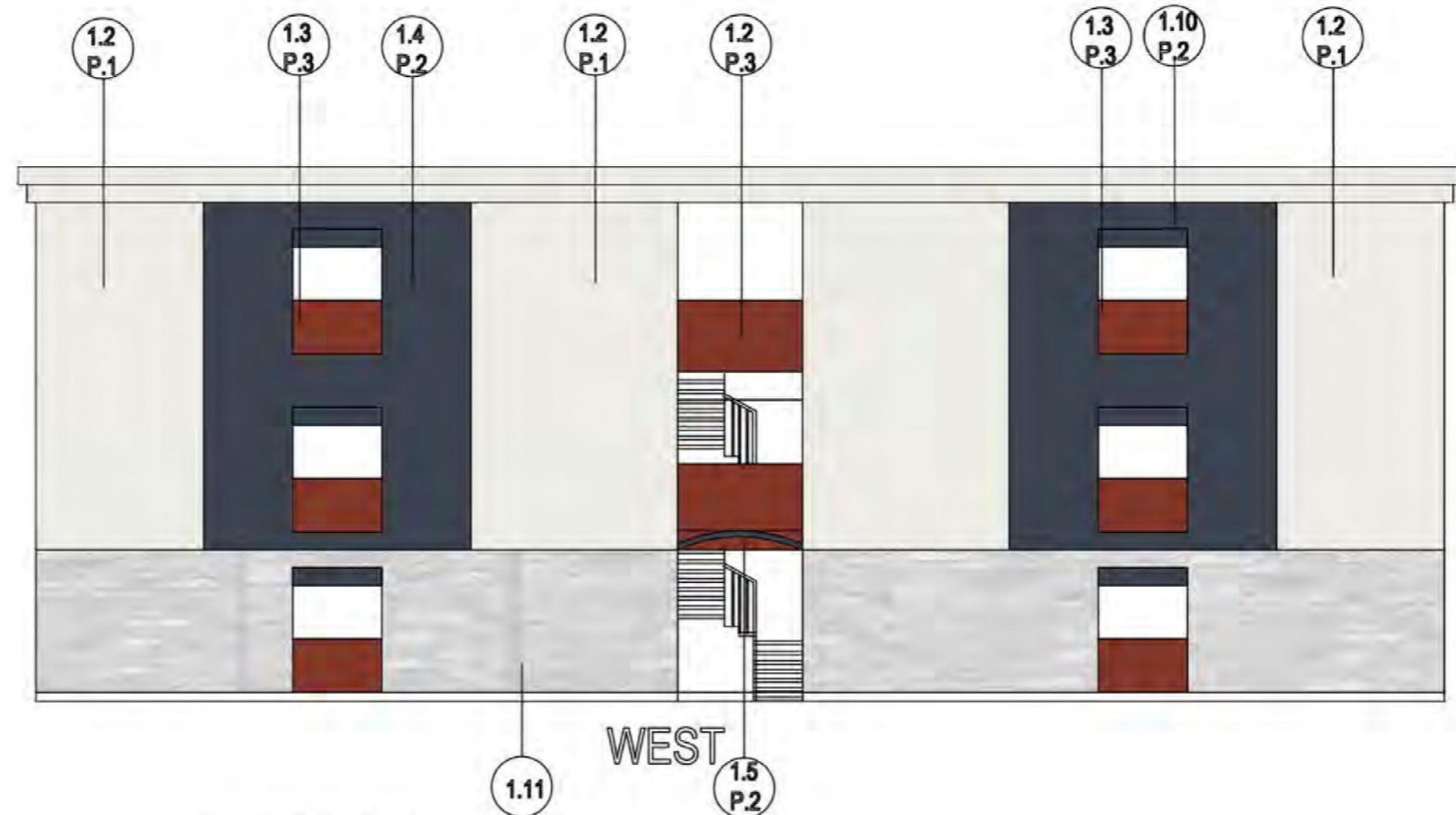
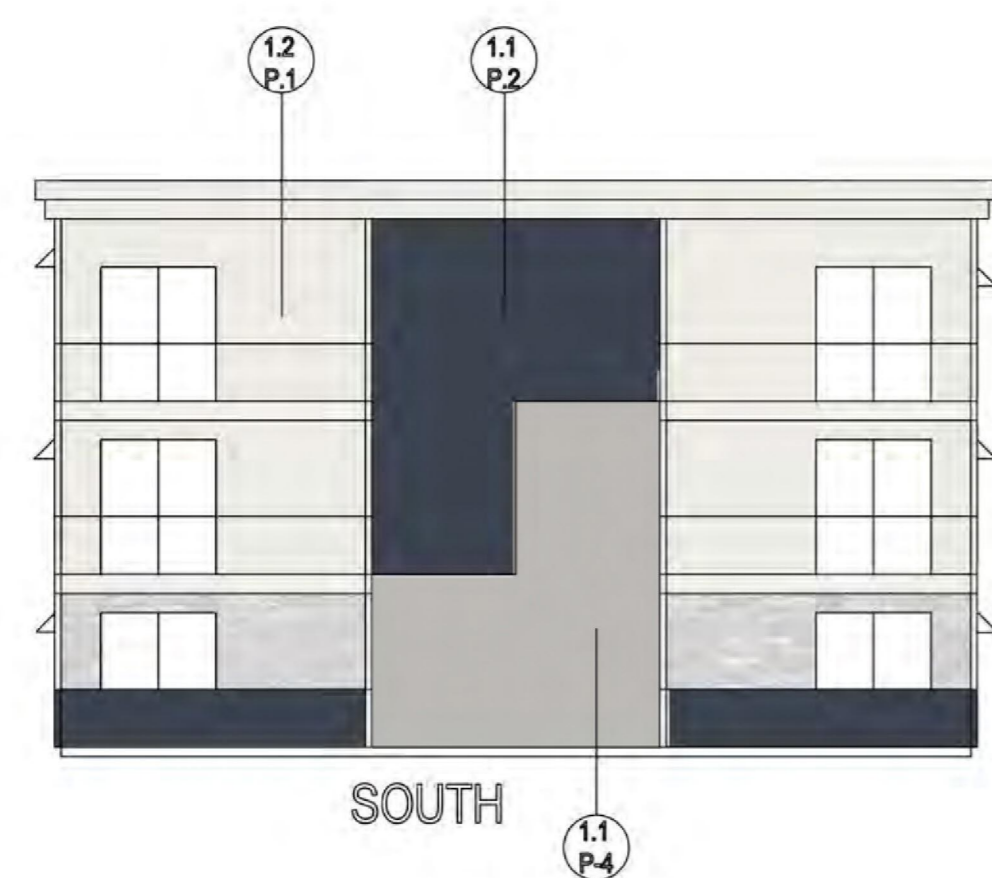
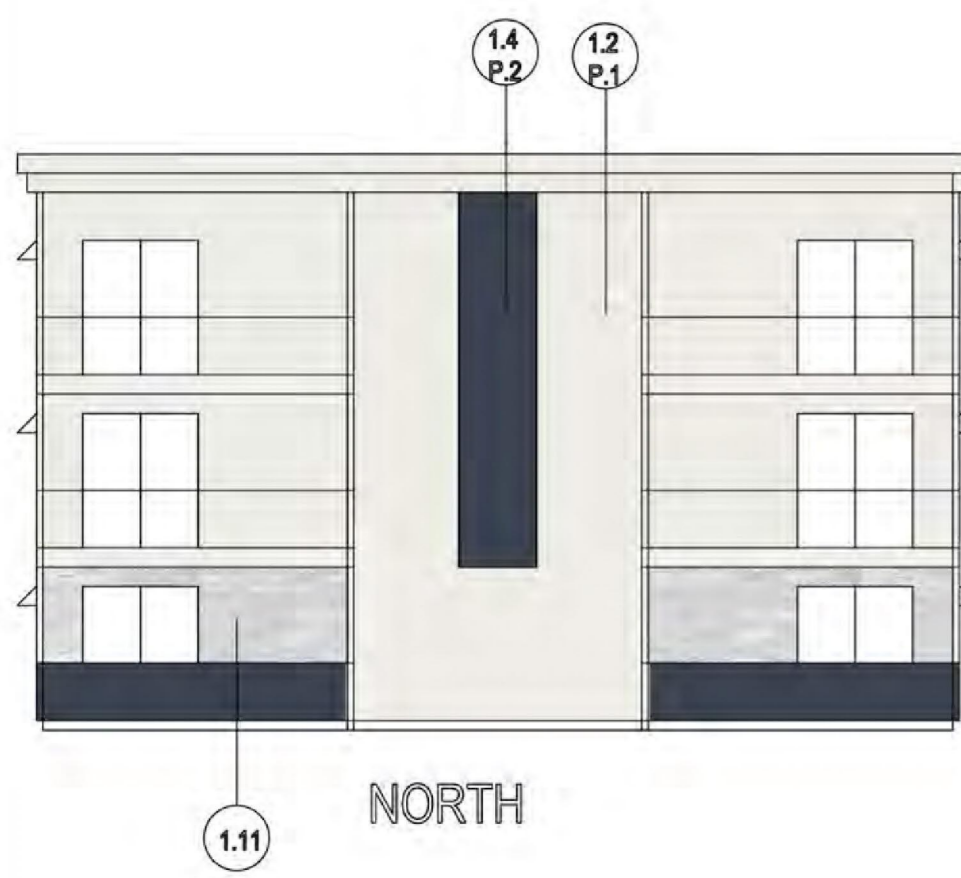
- PAINT - SHERWIN WILLIAMS (SW) ACRYLIC, LATEX, EGGSHELL**
- P.1 SW7005 PURE WHITE
 - P.2 SW2739 CHARCOAL BLUE
 - P.3 SW6335 FIRED BRICK
 - P.4 SW 7668 MARCH WIND

WILLIAM SEYMOUR CO., INC
 JOHN K. FOX
 428 E THUNDERBIRDS RD #234
 PHOENIX, ARIZONA 85022
 PHONE: (602) 573-2895
 E-MAIL: WSCING@COX.NET

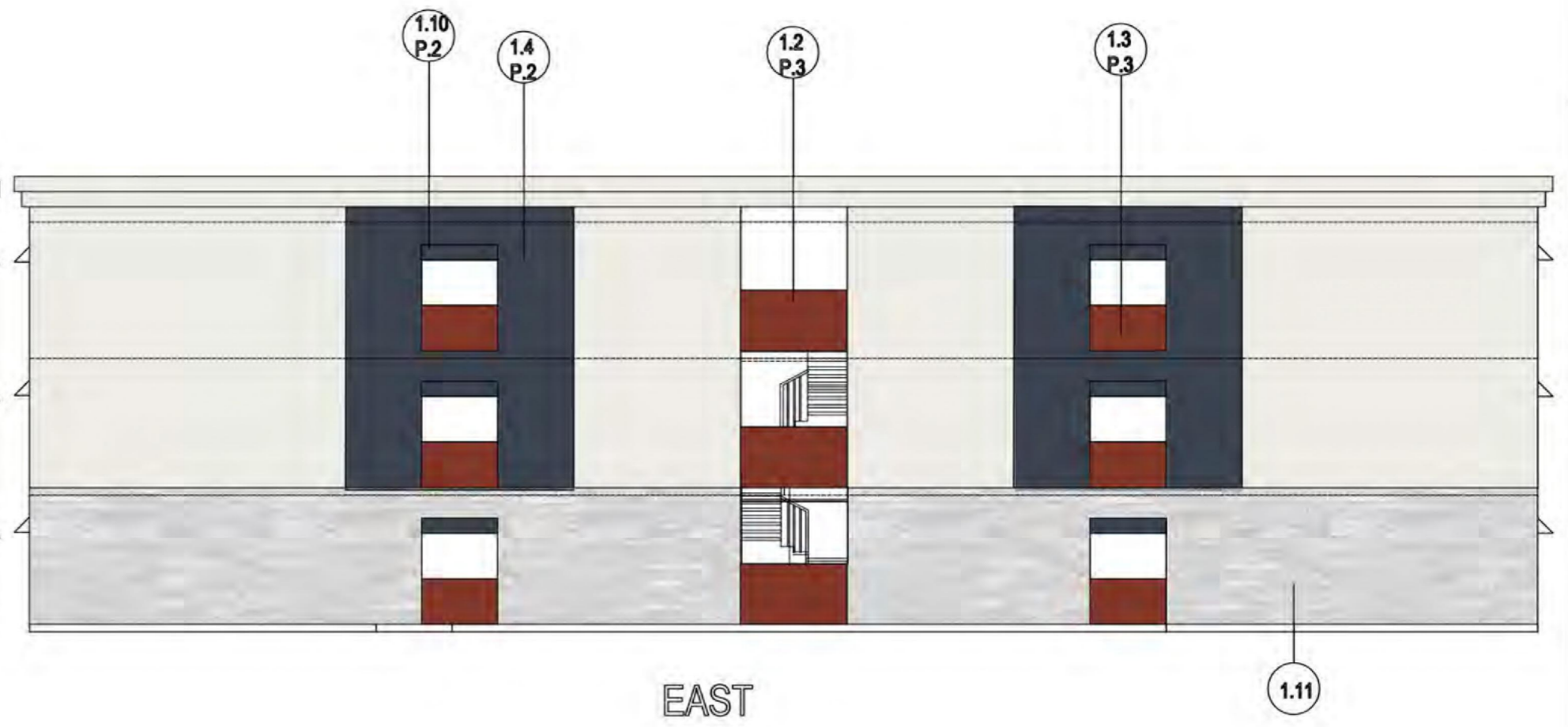
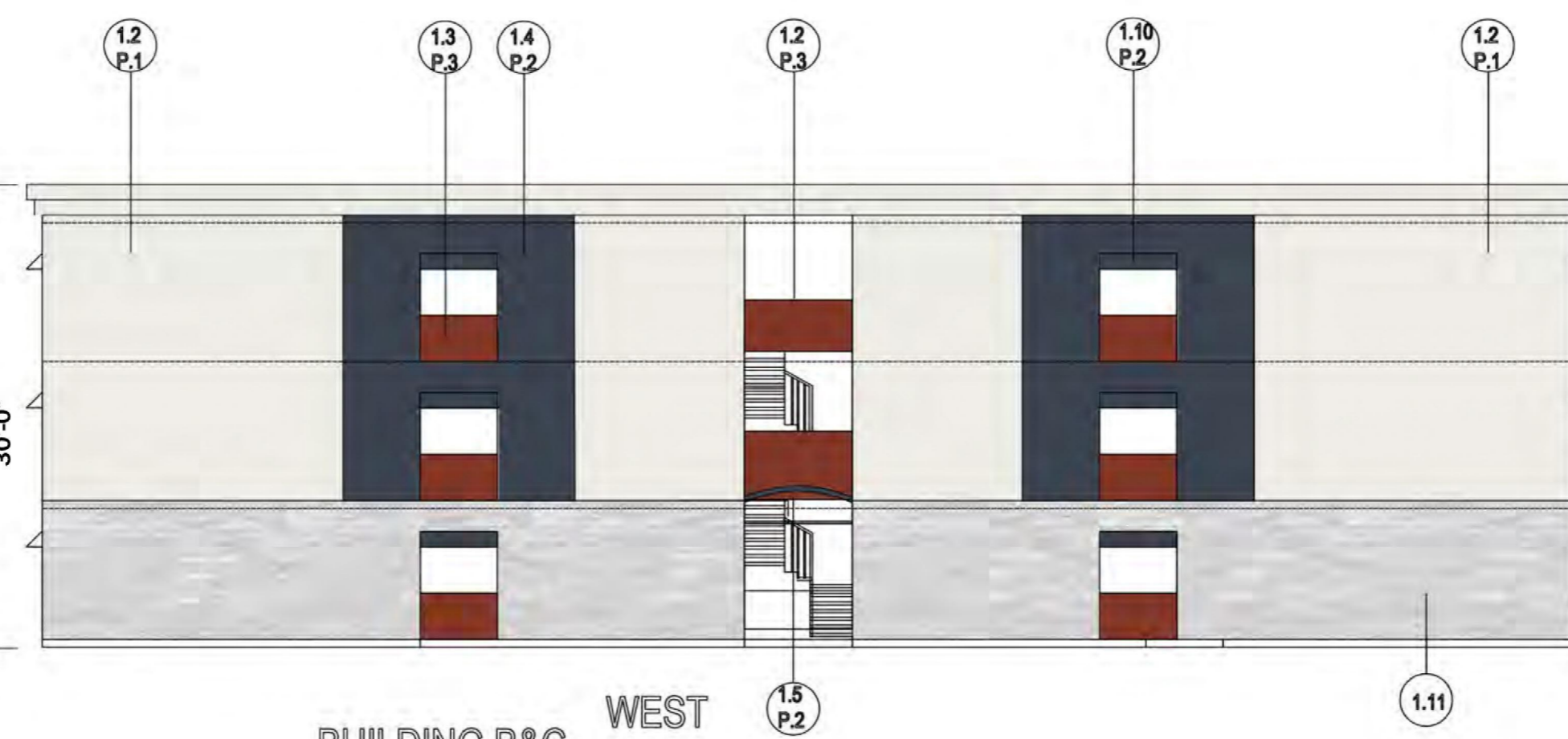
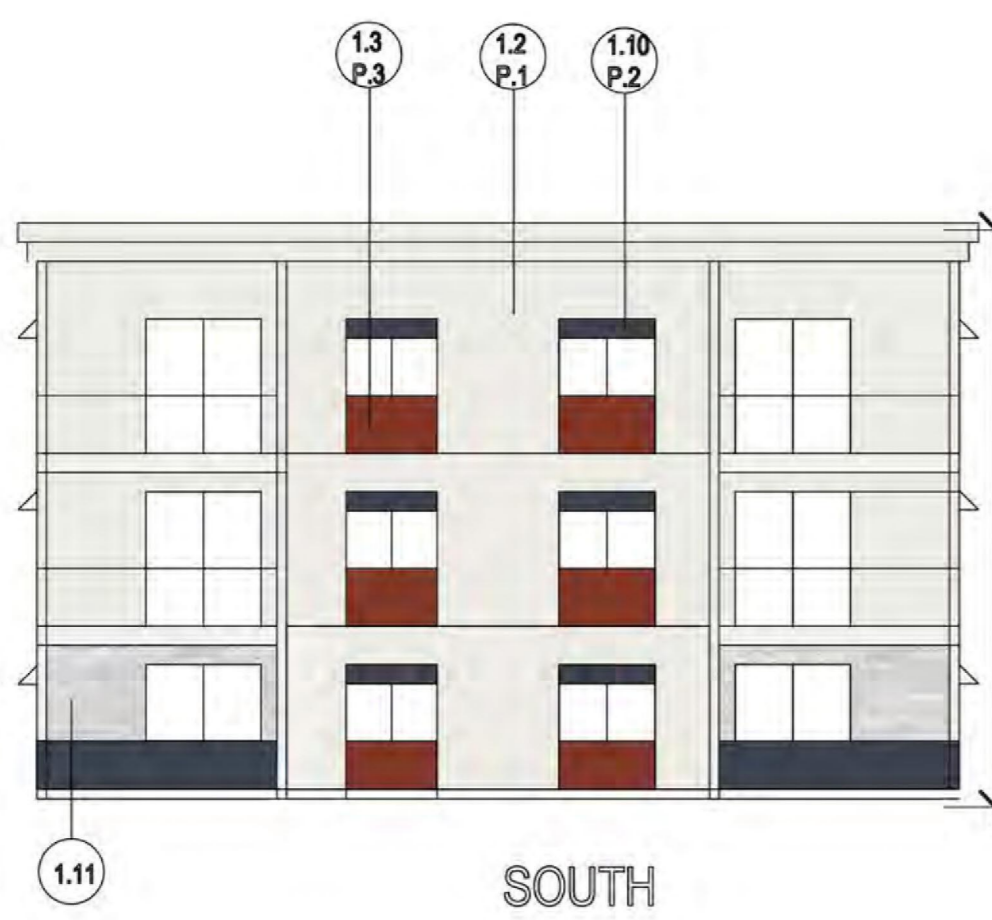
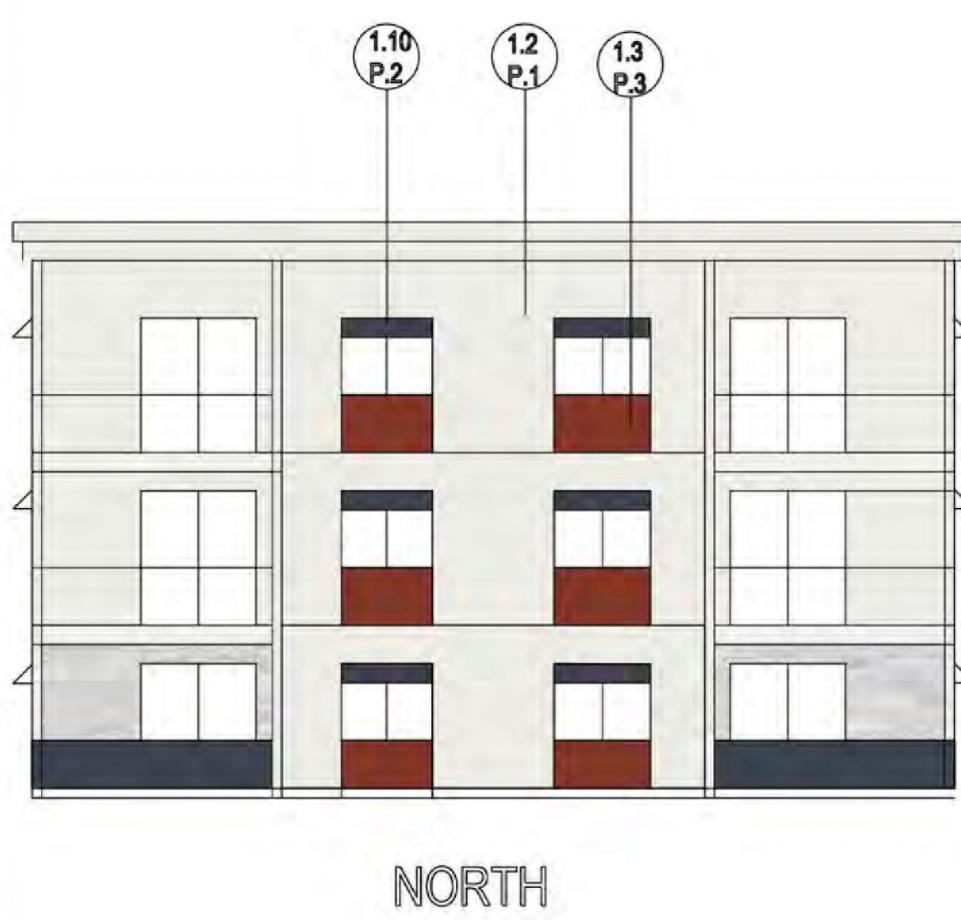
HIGLEY AND MAIN
 5308 E MAIN ST
 MESA, MARICOPA COUNTY, AZ

REVISIONS
 NO. DATE APP. DESCRIPTION

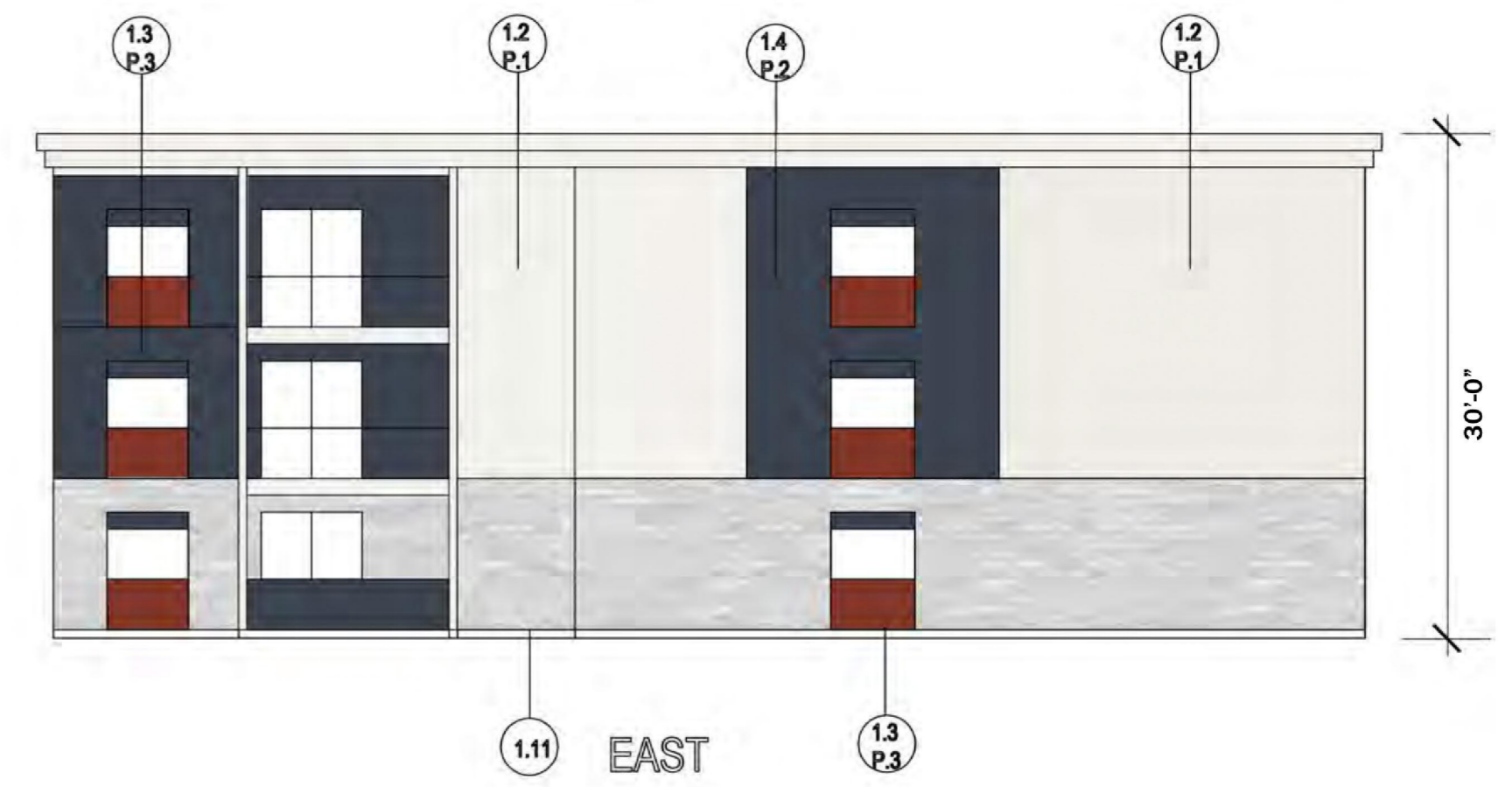
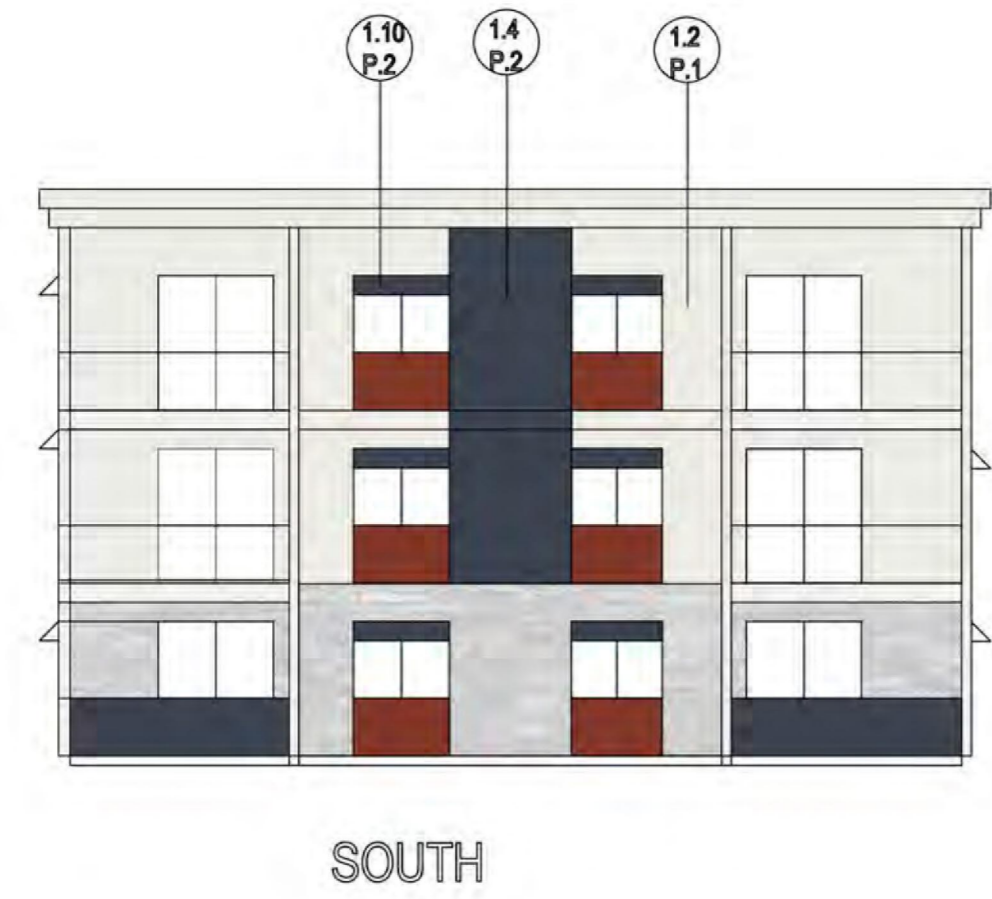
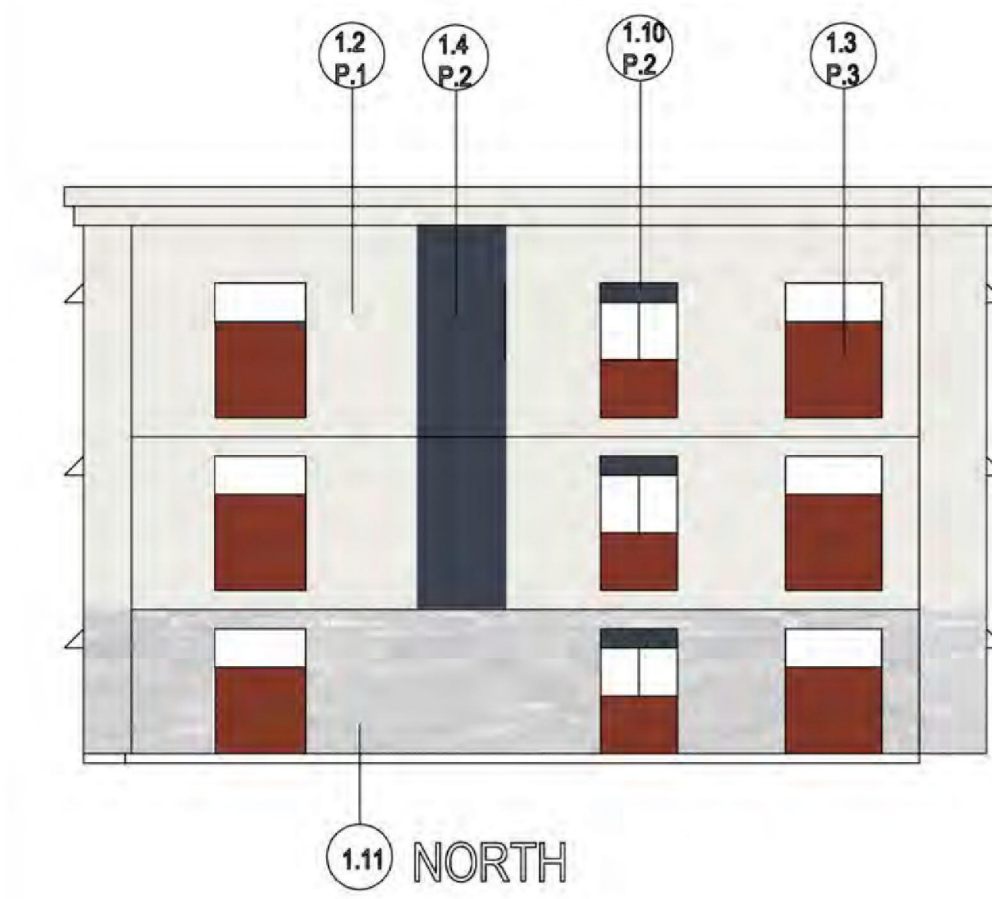
DESIGNED:
 DRAWN:
 CHECKED:
 DATE:
 SCALE 1"=10'
 PROJECT:
 FILE NAME:
 SHT: E-1



BUILDING A



BUILDING B&C



BUILDING D