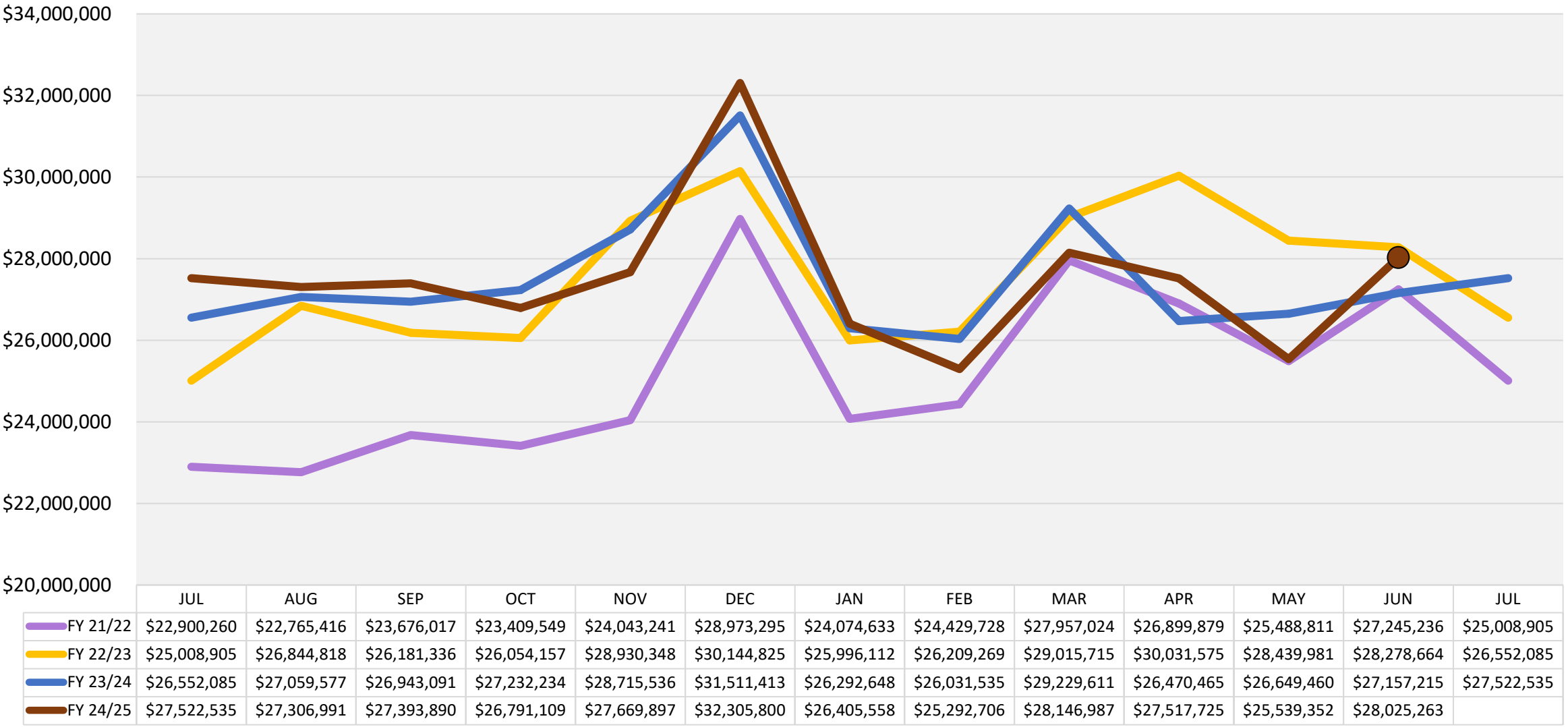


# Economic Update

Office of Management and Budget Director – Brian Ritschel

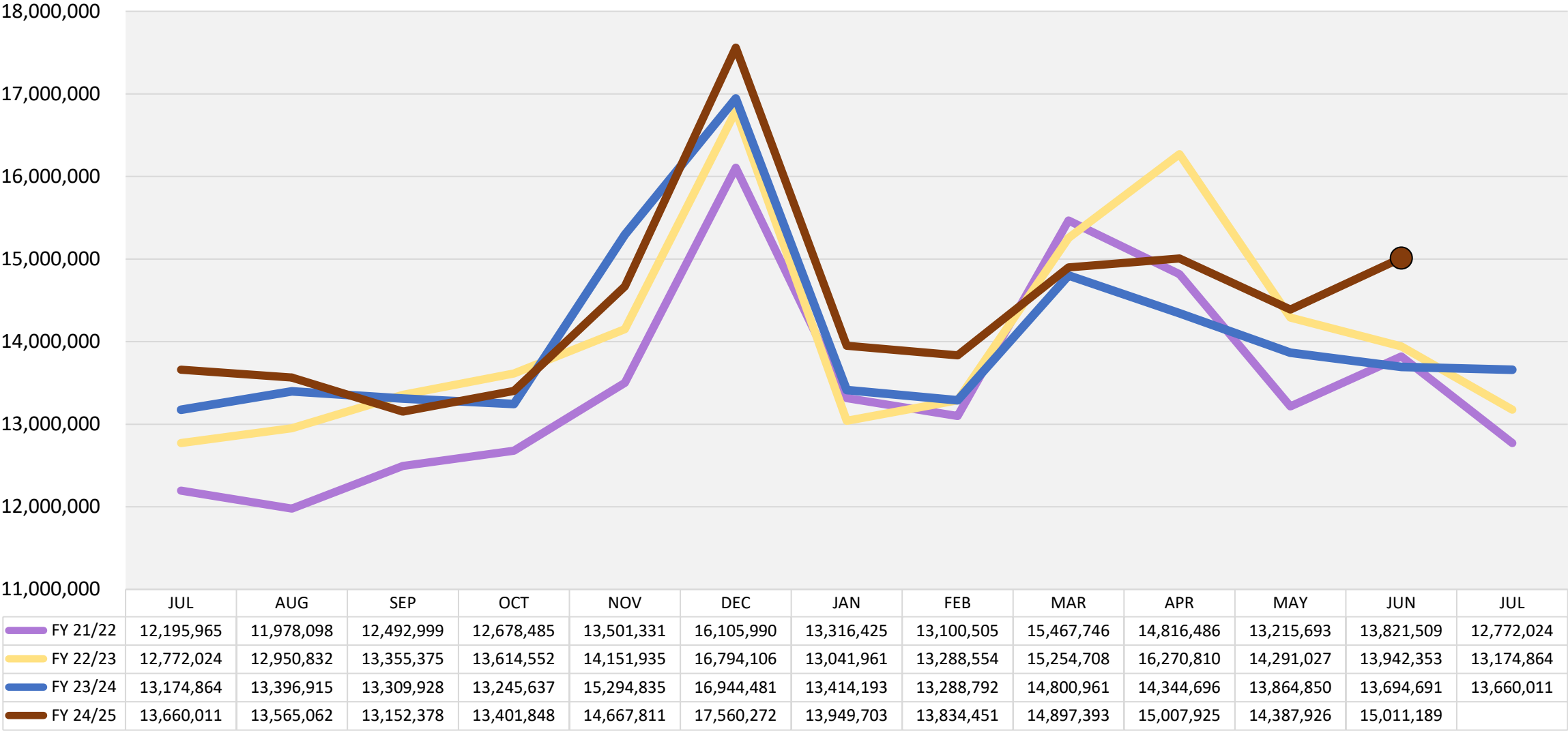
# City Sales Tax

Year Over Year - Consumer Activity by Month (source: Tax Revenue Summary Report)



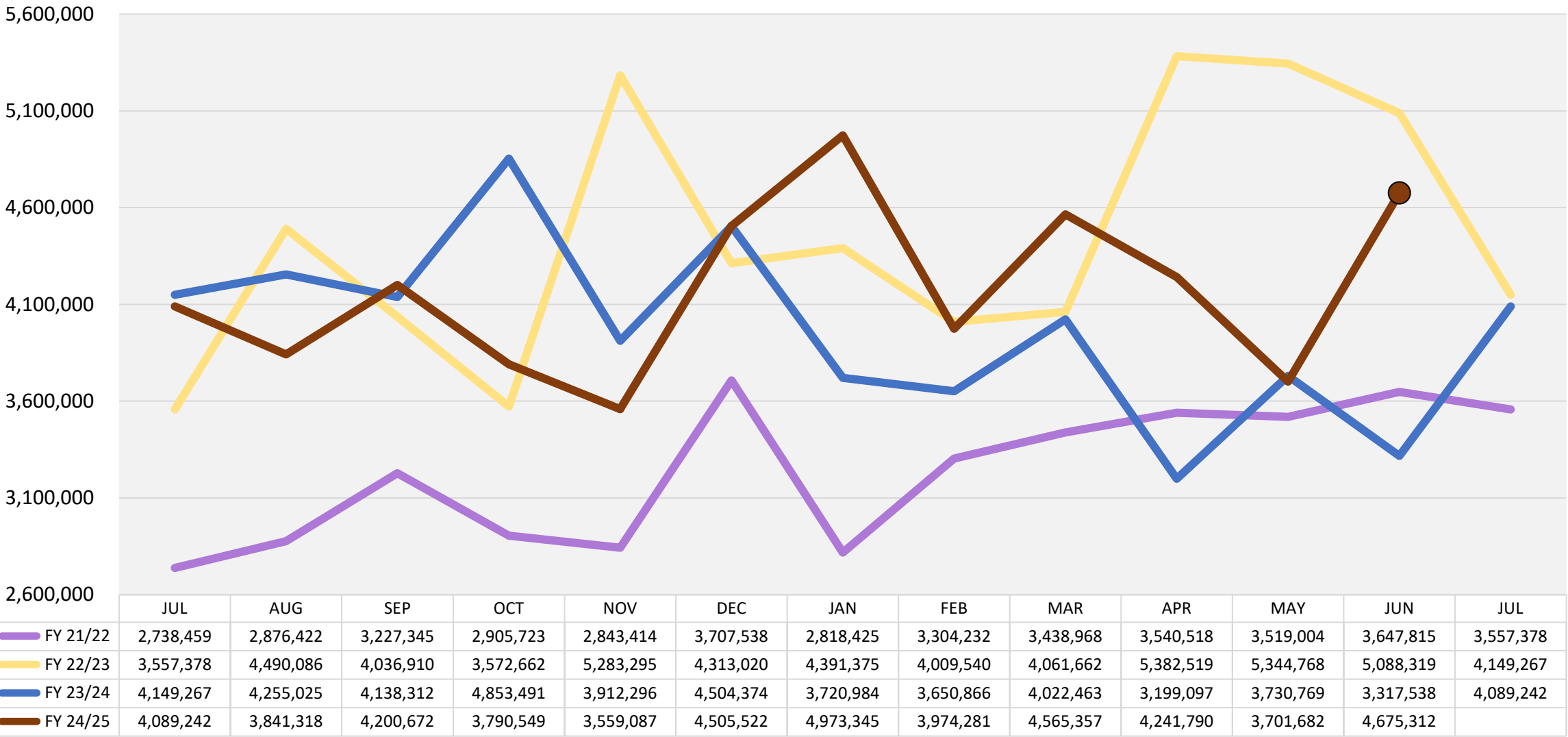
# Retail Category

City Sales Tax - Year over Year - Consumer Activity by Month



# Contracting Category

City Sales Tax - Year over Year - Consumer Activity by Month





## TAX REVENUE SUMMARY

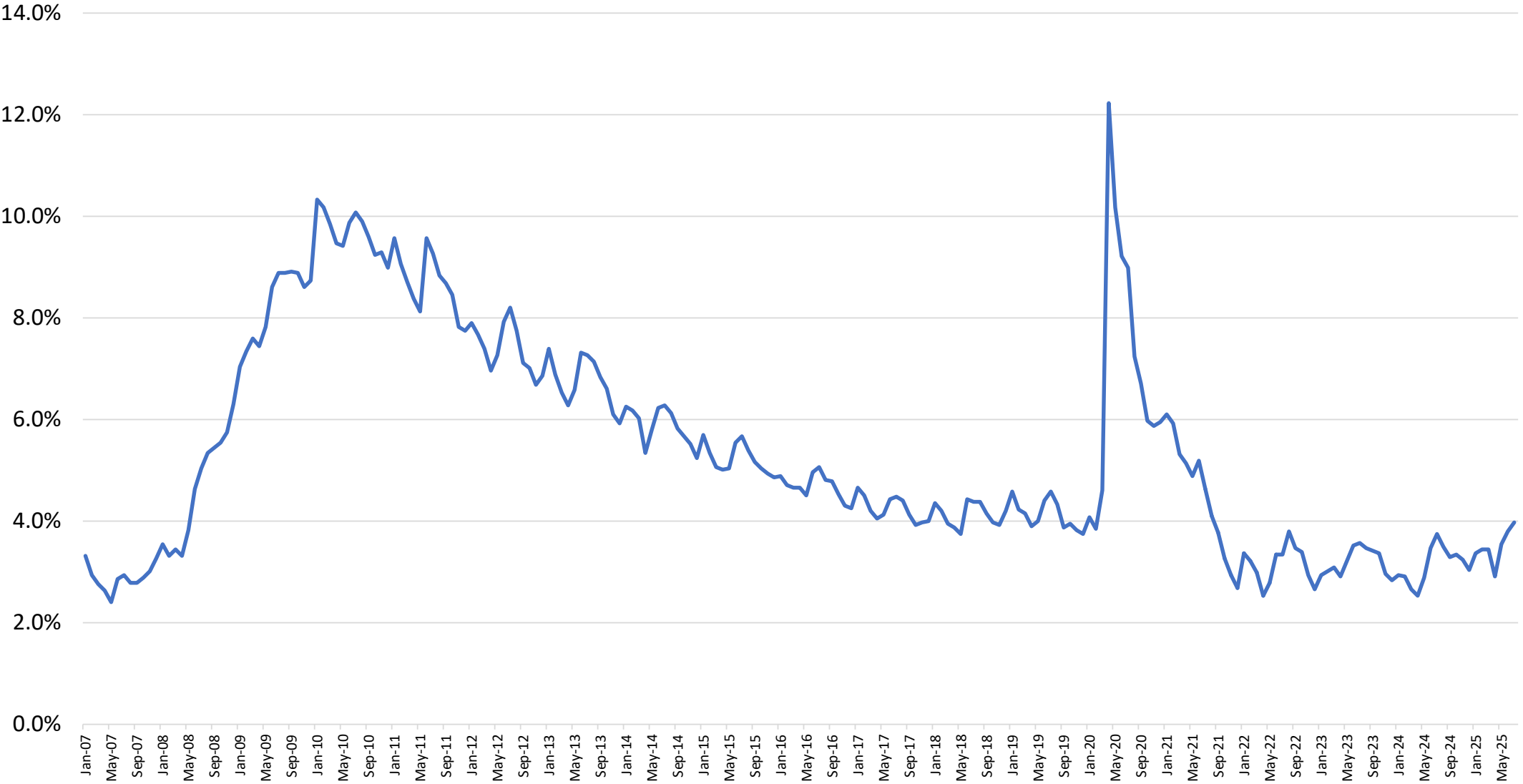
Consumer Activity - June 2025

### PRIVILEGE AND USE TAX BY CATEGORY (GENERAL FUND, STREET MAINTENANCE FUND, QUALITY OF LIFE FUND, & PUBLIC SAFETY FUND - 2%)

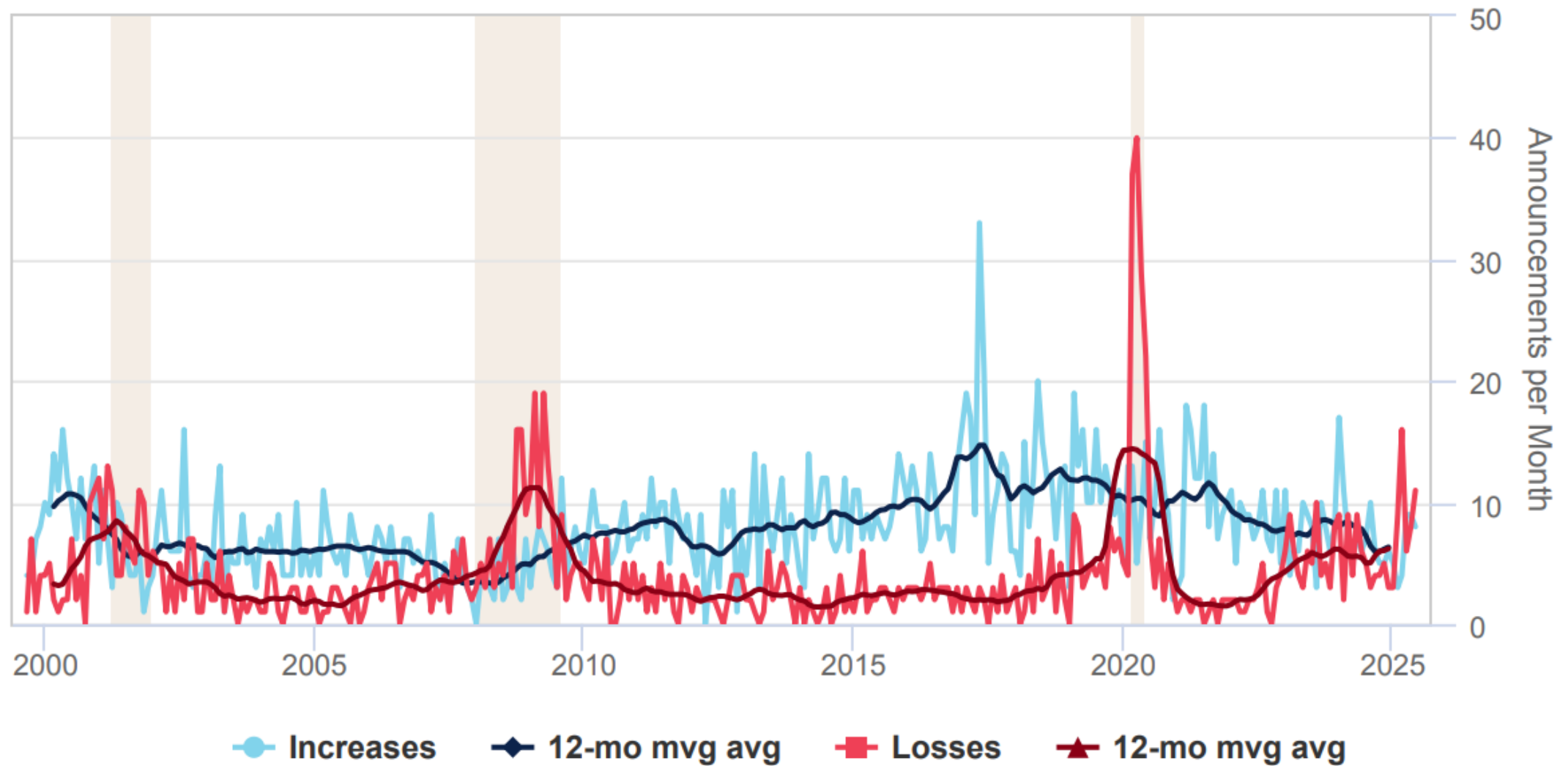
Category	June					Fiscal Year to Date				
	2023	2024	2025	Var from FY23/24	% of Total	2022/2023	2023/2024	2024/2025	Var from FY23/24	% of Total
Retail Sales	\$ 13,942,352.73	\$ 13,694,691.37	\$ 15,011,188.83	9.6%	53.6%	\$ 169,720,116.67	\$ 168,774,843.75	\$ 173,095,967.61	2.6%	52.4%
Rentals	2,475,010.34	2,738,524.09	2,744,632.42	0.2%	9.8%	28,109,938.68	29,221,793.28	29,803,332.89	2.0%	9.0%
Utilities	1,861,320.02	2,084,718.52	2,261,574.24	8.5%	8.1%	19,981,726.15	21,608,740.19	23,860,968.28	10.4%	7.2%
Restaurants & Bars	2,194,093.46	2,263,049.42	2,416,545.04	6.8%	8.6%	27,811,724.04	28,317,608.67	29,352,468.22	3.7%	8.9%
Communications	265,570.77	275,718.37	290,222.22	5.3%	1.0%	3,493,028.86	3,359,740.09	3,515,829.64	4.6%	1.1%
Amusements	240,367.94	265,923.74	268,885.89	1.1%	1.0%	2,716,015.24	2,861,320.81	2,938,891.88	2.7%	0.9%
Publishing	37,891.42	41,110.36	46,975.34	14.3%	0.2%	477,568.78	522,915.46	475,436.42	-9.1%	0.1%
Miscellaneous	171,400.05	147,541.02	146,177.41	-0.9%	0.5%	1,381,309.09	1,770,245.34	1,877,494.71	6.1%	0.6%
Printing & Advertising	62,523.24	54,355.65	59,049.01	8.6%	0.2%	631,941.01	659,189.17	743,481.89	12.8%	0.2%
<b>Sub-Total</b>	<b>\$ 21,250,529.97</b>	<b>\$ 21,565,632.54</b>	<b>\$ 23,245,250.40</b>	<b>7.8%</b>	<b>82.9%</b>	<b>\$ 254,323,368.52</b>	<b>\$ 257,096,396.76</b>	<b>\$ 265,663,871.54</b>	<b>3.3%</b>	<b>80.5%</b>
Contracting	\$ 5,088,318.79	\$ 3,317,538.05	\$ 4,675,311.97	40.9%	16.7%	\$ 53,531,533.39	\$ 47,454,484.23	\$ 50,118,155.18	5.6%	15.2%
<b>Sub-Total with Contracting</b>	<b>\$ 26,338,848.76</b>	<b>\$ 24,883,170.59</b>	<b>\$ 27,920,562.37</b>	<b>12.2%</b>	<b>99.6%</b>	<b>\$ 307,854,901.91</b>	<b>\$ 304,550,880.99</b>	<b>\$ 315,782,026.72</b>	<b>3.7%</b>	<b>95.6%</b>
Residential Rental	\$ 1,939,815.56	\$ 2,274,044.50	\$ 104,700.32	-95.4%	0.4%	\$ 23,280,802.87	\$ 25,269,381.89	\$ 14,394,434.89	-43.0%	4.4%
<b>Total</b>	<b>\$ 28,278,664.32</b>	<b>\$ 27,157,215.09</b>	<b>\$ 28,025,262.69</b>	<b>3.2%</b>	<b>100.0%</b>	<b>\$ 331,135,704.78</b>	<b>\$ 329,820,262.88</b>	<b>\$ 330,176,461.61</b>	<b>0.1%</b>	<b>100.0%</b>
<b>Budget</b>	<b>\$ 22,375,212.00</b>	<b>\$ 23,079,631.00</b>	<b>\$ 26,016,579.00</b>			<b>\$ 278,007,000.00</b>	<b>\$ 283,786,999.83</b>	<b>\$ 314,283,000.00</b>		
<b>Above/Below Budget</b>	<b>\$ 5,903,452.32</b>	<b>\$ 4,077,584.09</b>	<b>\$ 2,008,683.69</b>			<b>\$ 53,128,704.78</b>	<b>\$ 46,033,263.05</b>	<b>\$ 15,893,461.61</b>		
<b>Variance from Budget</b>	<b>26.4%</b>	<b>17.7%</b>	<b>7.7%</b>			<b>19.1%</b>	<b>16.2%</b>	<b>5.1%</b>		

# City of Mesa Unemployment Rate

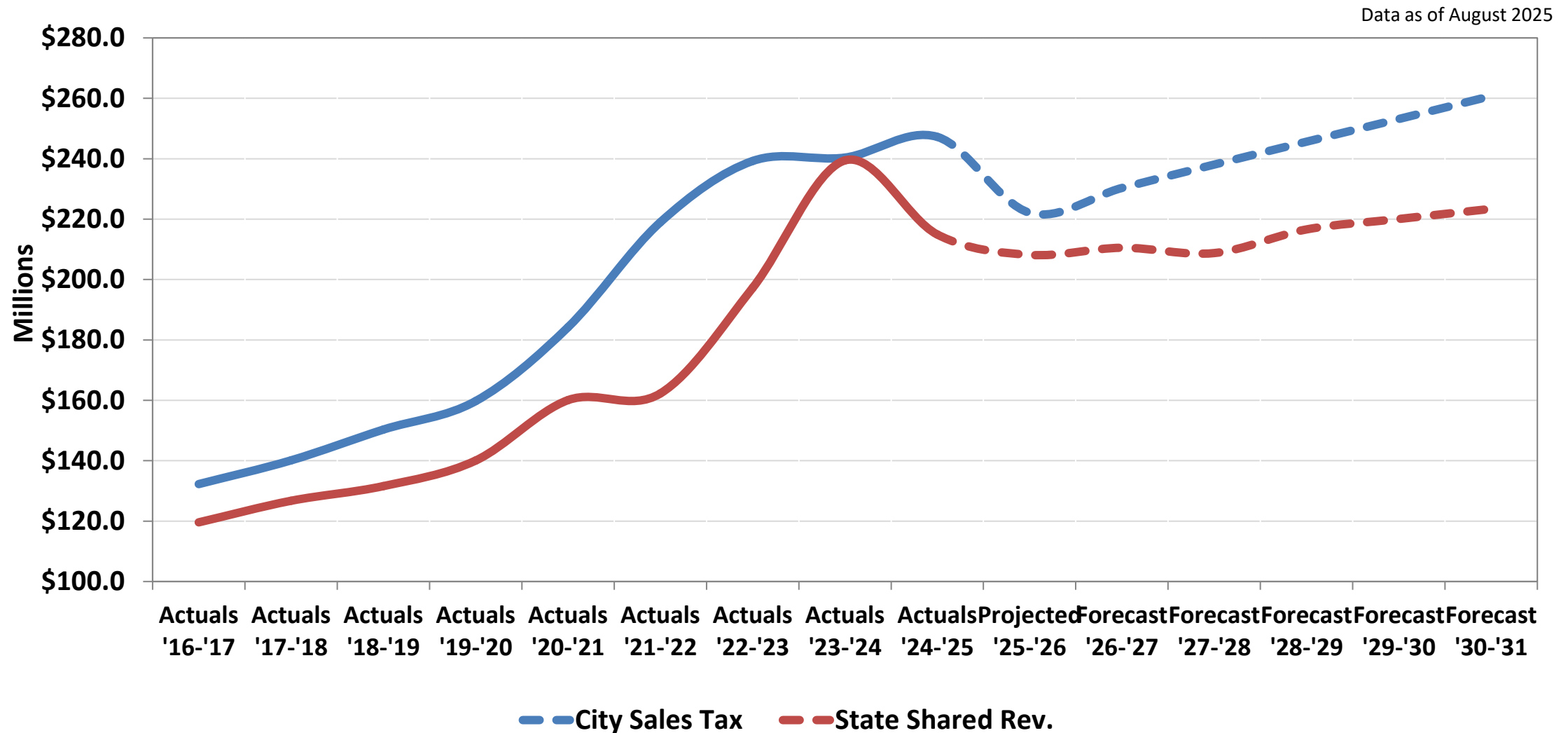
Source: Arizona Office of Economic Opportunity



## Announcements of Job Increases and Losses - Arizona

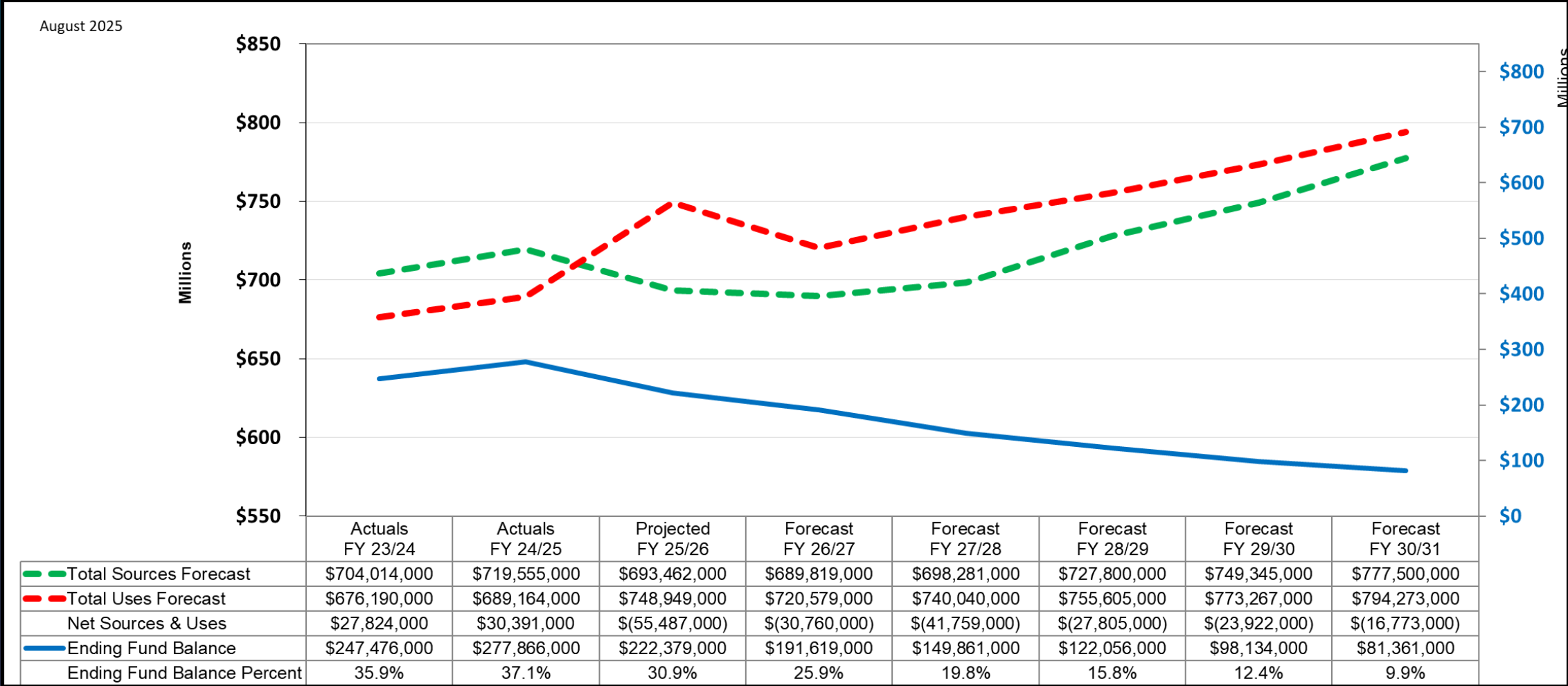


# General Governmental Funds Forecast





# General Governmental Funds Sources and Uses





mesa·az