

KEYNOTES:	
#	NOTE
50	STUCCO V REVEAL
53	STEEL RAILING
54	METAL AWNING
63	DARK BRONZE METAL SHADE DEVICE
64	STEEL SCREEN
84	CMU BLOCK
87	STUCCO COLOR 1 - LIGHT GREY
88	STUCCO COLOR 2 - DARK GREY
89	HORIZONTAL SIDING



1 EAST ELEVATION - SOUTH  
1/8" = 1'-0"



2 EAST ELEVATION - NORTH  
1/8" = 1'-0"



LEGACY SQUARE  
APARTMENTS

LEGACY SQUARE  
BUILDING ADDRESS

MATERIAL EXTERIOR ELEVATIONS

REVISIONS:

SHEET #  
A205  
REVIEW SET

PRINT DATE: 8/30/2024 12:33:31 PM

KEYNOTES:	
#	NOTE
50	STUCCO V REVEAL
53	STEEL RAILING
54	METAL AWNING
59	STANDING SEAM METAL ROOF
63	DARK BRONZE METAL SHADE DEVICE
66	SCHEDULED GLAZING
84	CMU BLOCK
87	STUCCO COLOR 1 - LIGHT GREY
88	STUCCO COLOR 2 - DARK GREY
89	HORIZONTAL SIDING



1 NORTH ELEVATION  
1/8" = 1'-0"



2 SOUTH ELEVATION  
1/8" = 1'-0"



LEGACY SQUARE  
APARTMENTS

LEGACY SQUARE  
BUILDING ADDRESS

MATERIAL EXTERIOR ELEVATIONS

REVISIONS:

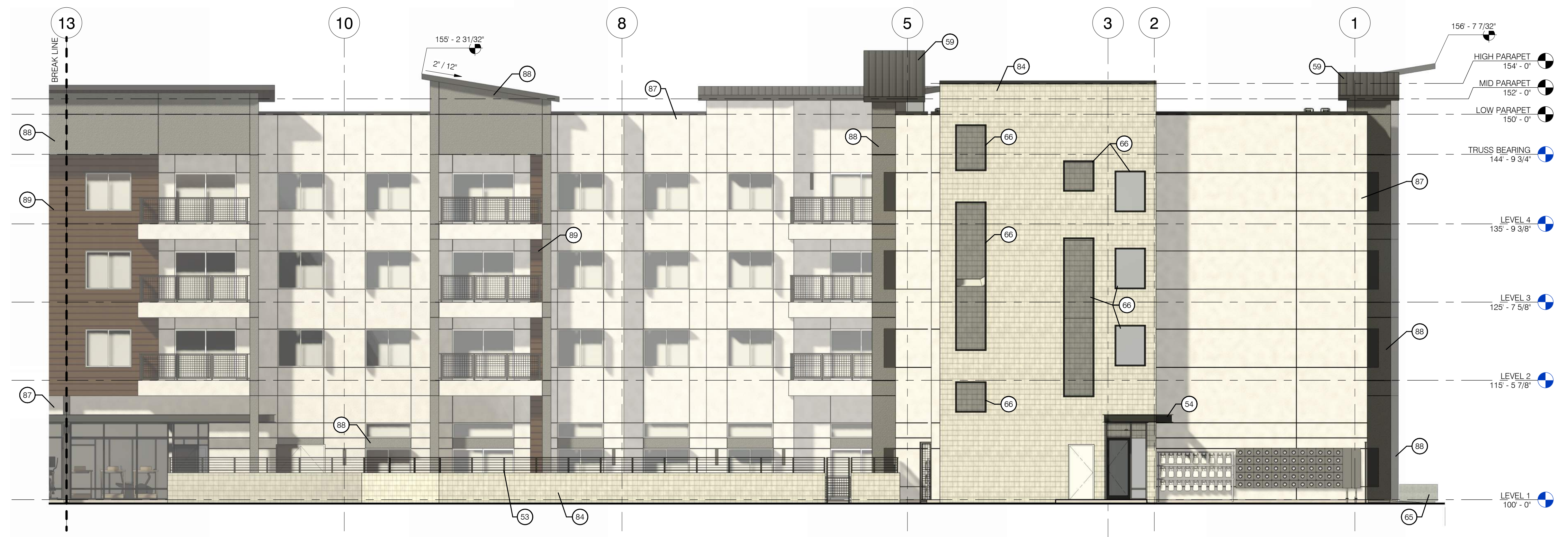
SHEET #  
A206  
REVIEW SET

PRINT DATE: 8/30/2024 12:34:08 PM

KEYNOTES:	
#	NOTE
50	STUCCO V REVEAL
53	STEEL RAILING
54	METAL AWNING
59	STANDING SEAM METAL ROOF
63	DARK BRONZE METAL SHADE DEVICE
65	CONCRETE PLANTER
66	SCHEDULED GLAZING
84	CMU BLOCK
87	STUCCO COLOR 1 - LIGHT GREY
88	STUCCO COLOR 2 - DARK GREY
89	HORIZONTAL SIDING



1 WEST ELEVATION - NORTH  
1/8" = 1'-0"



2 WEST ELEVATION - SOUTH  
1/8" = 1'-0"



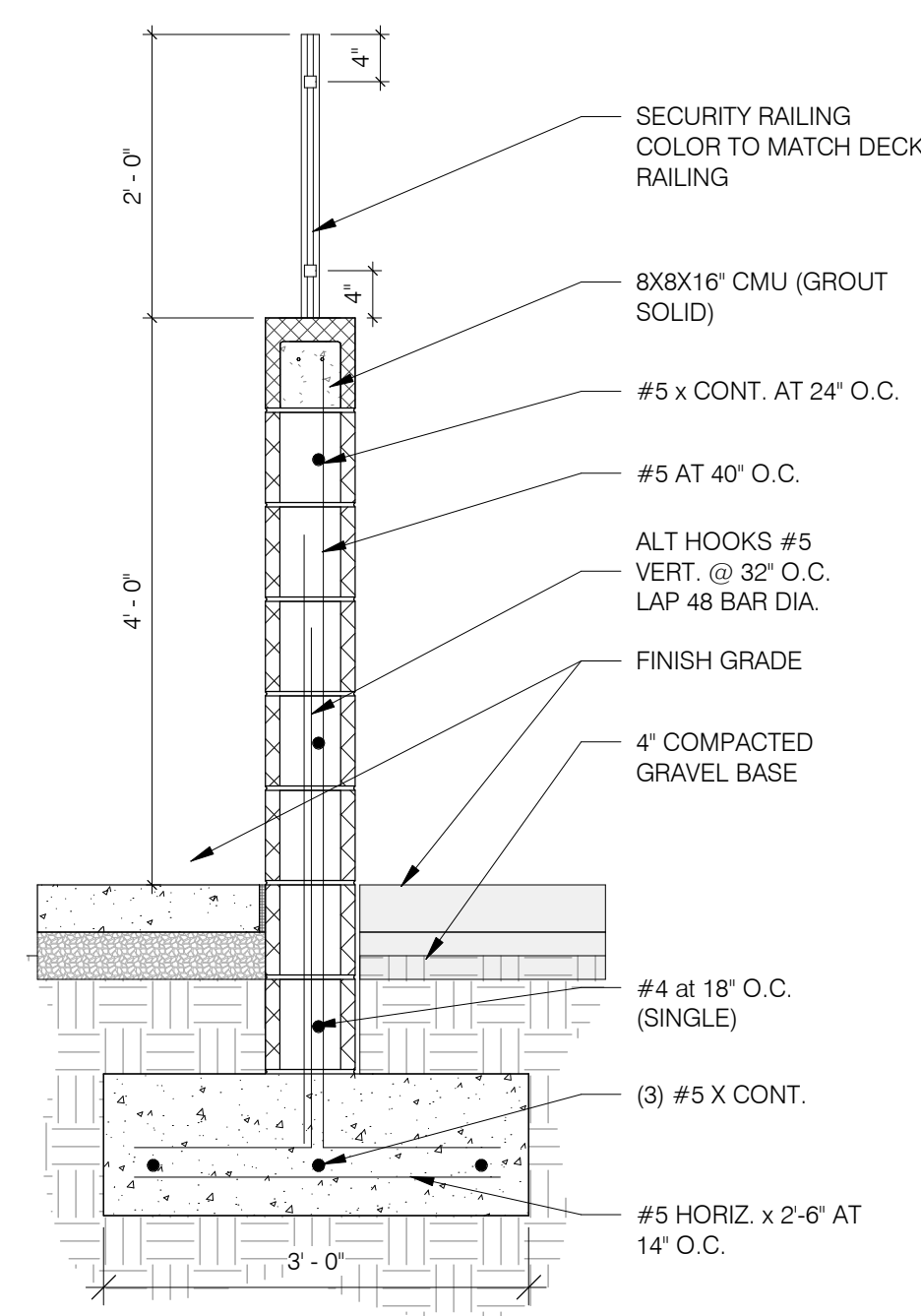
LEGACY SQUARE  
APARTMENTS

LEGACY SQUARE  
BUILDING ADDRESS  
MATERIAL EXTERIOR ELEVATIONS

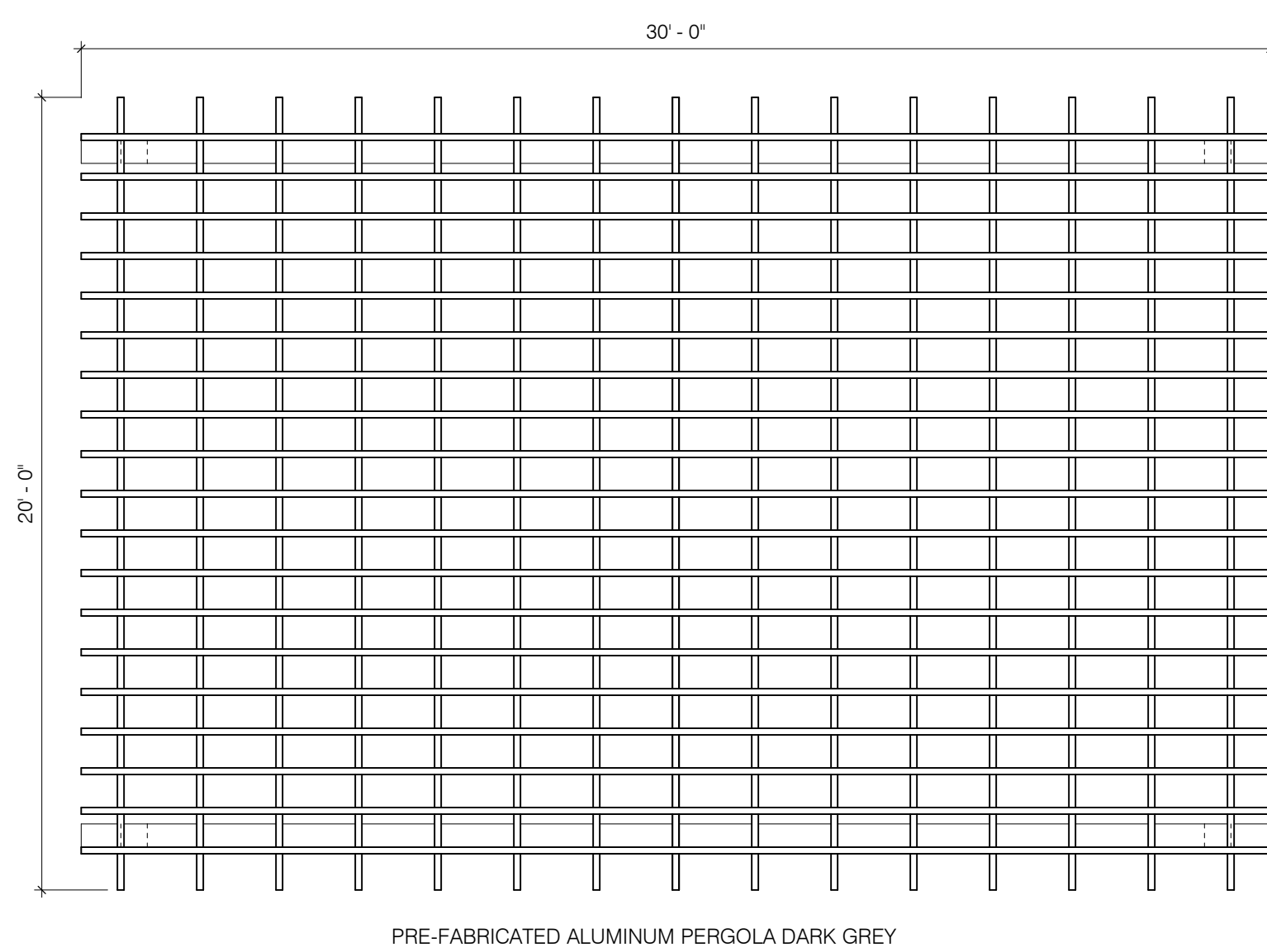
REVISIONS:

SHEET #  
A207  
REVIEW SET

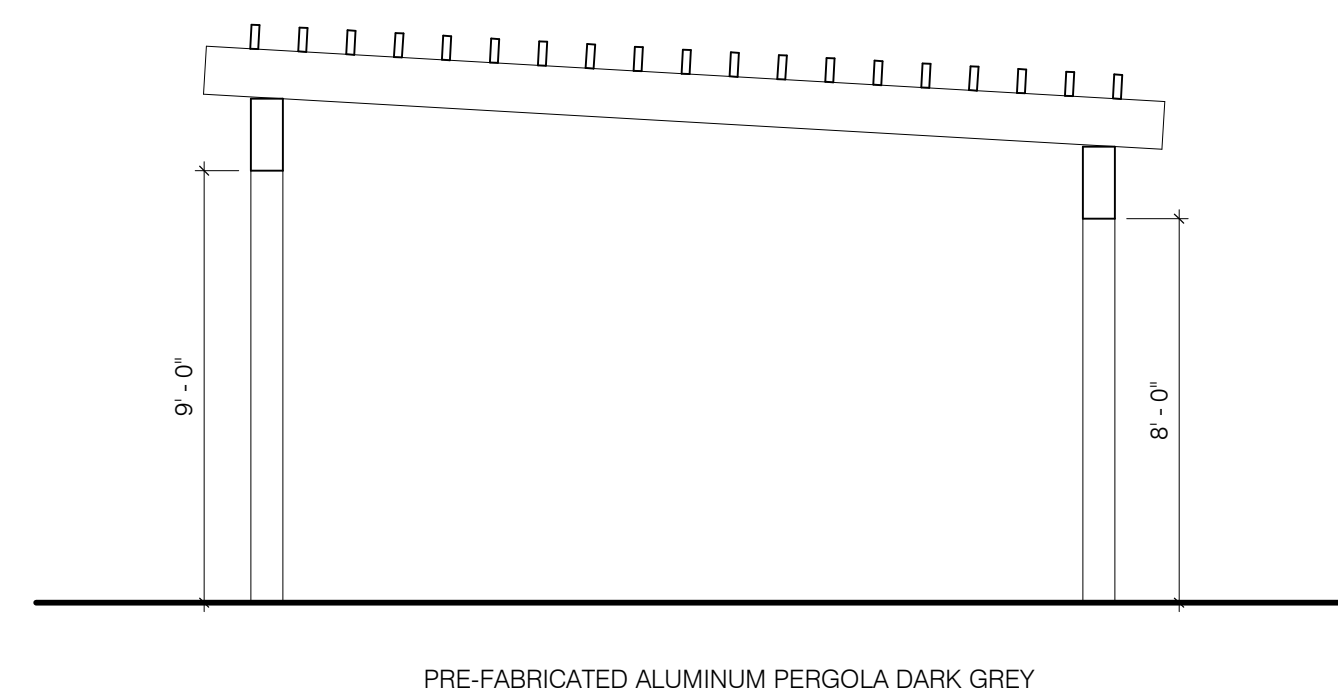
PRINT DATE: 8/30/2024 12:36:25 PM



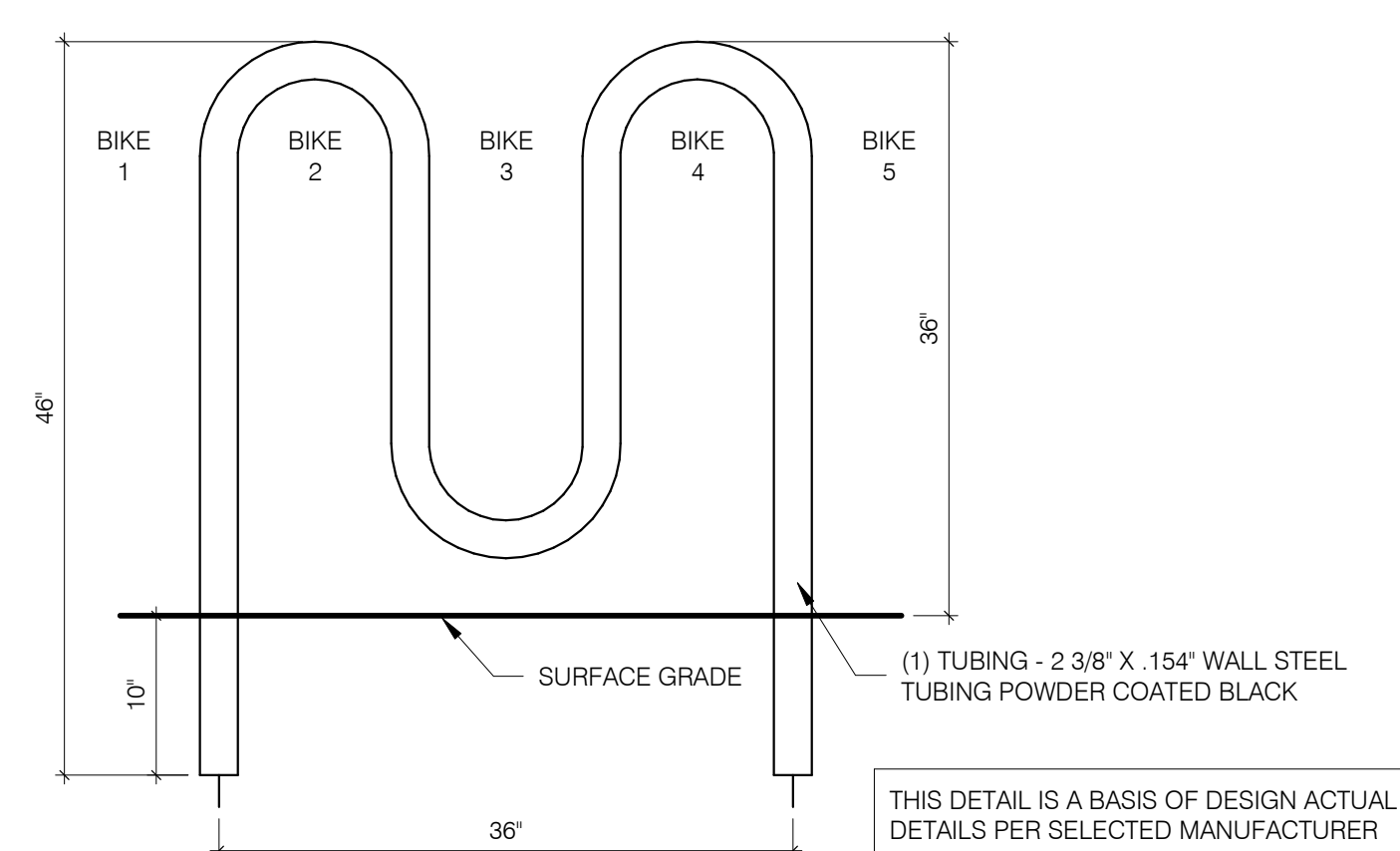
6 POOL FENCE SECTION  
3/4" = 1'-0"



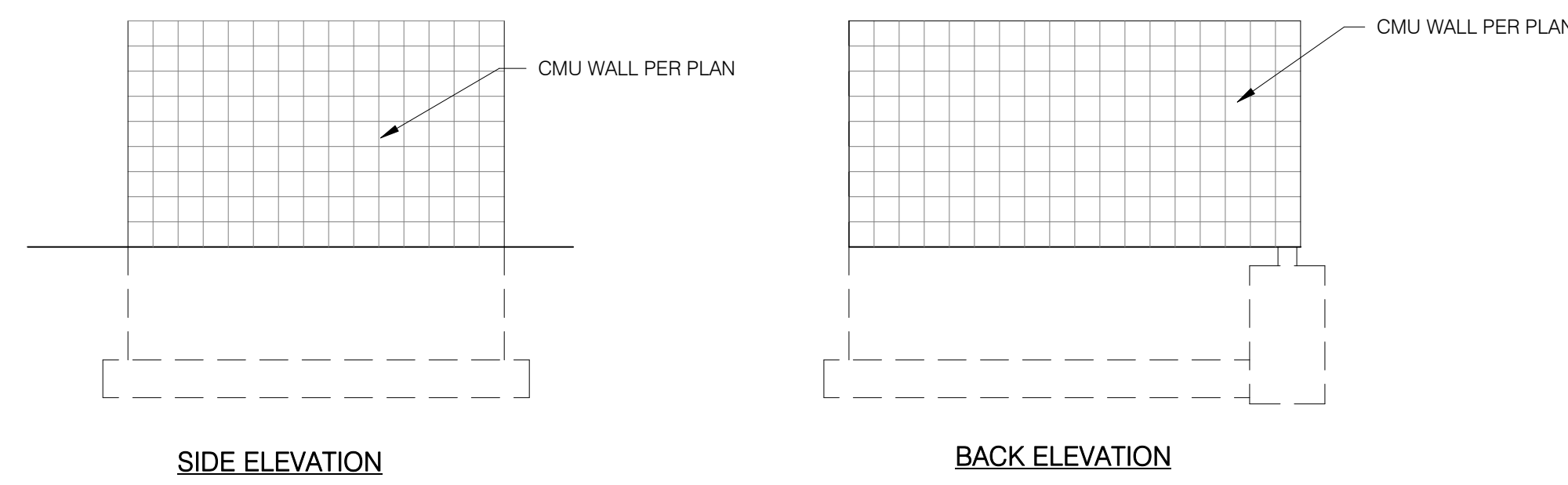
7 PERGOLA  
1/4" = 1'-0"



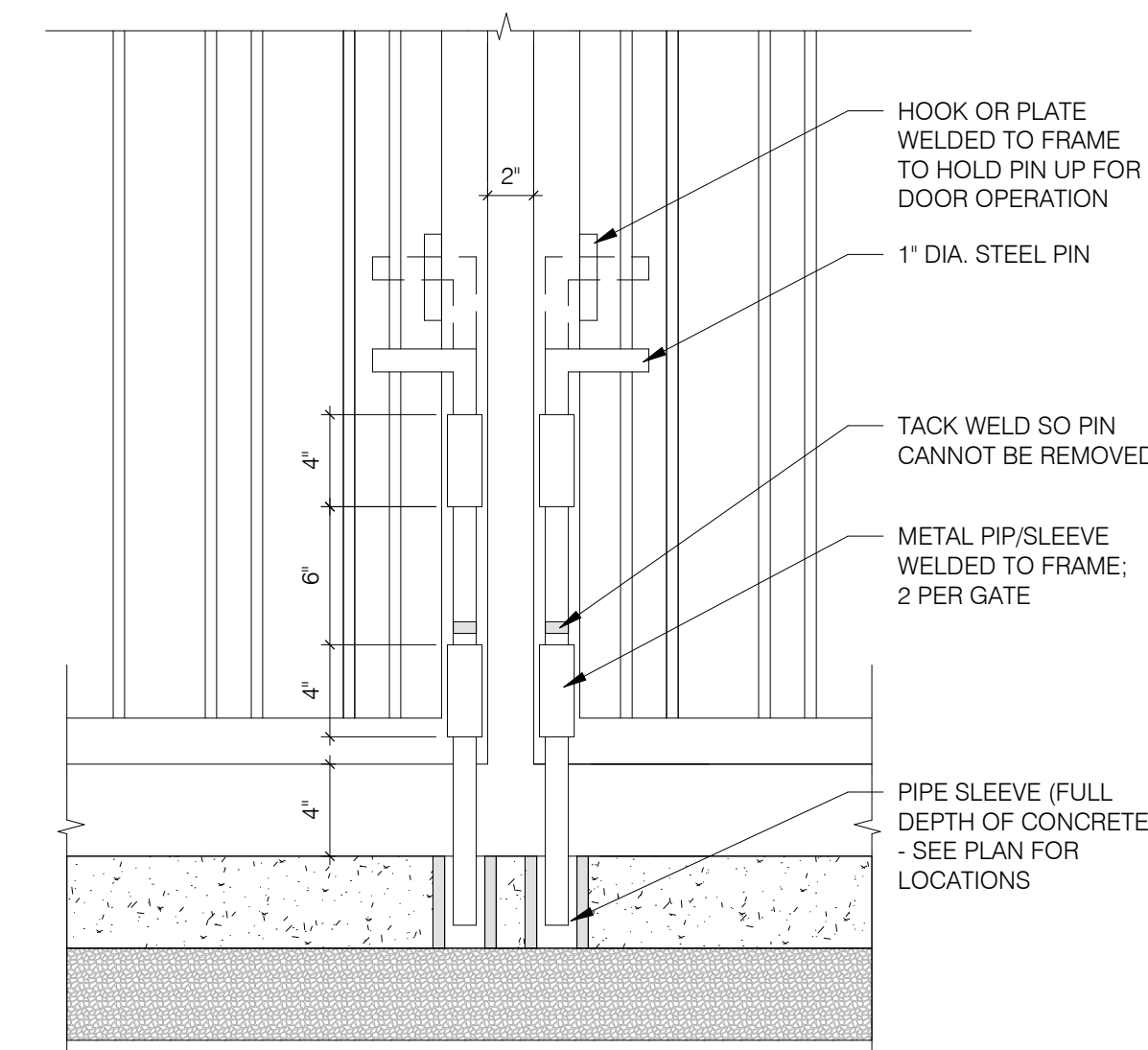
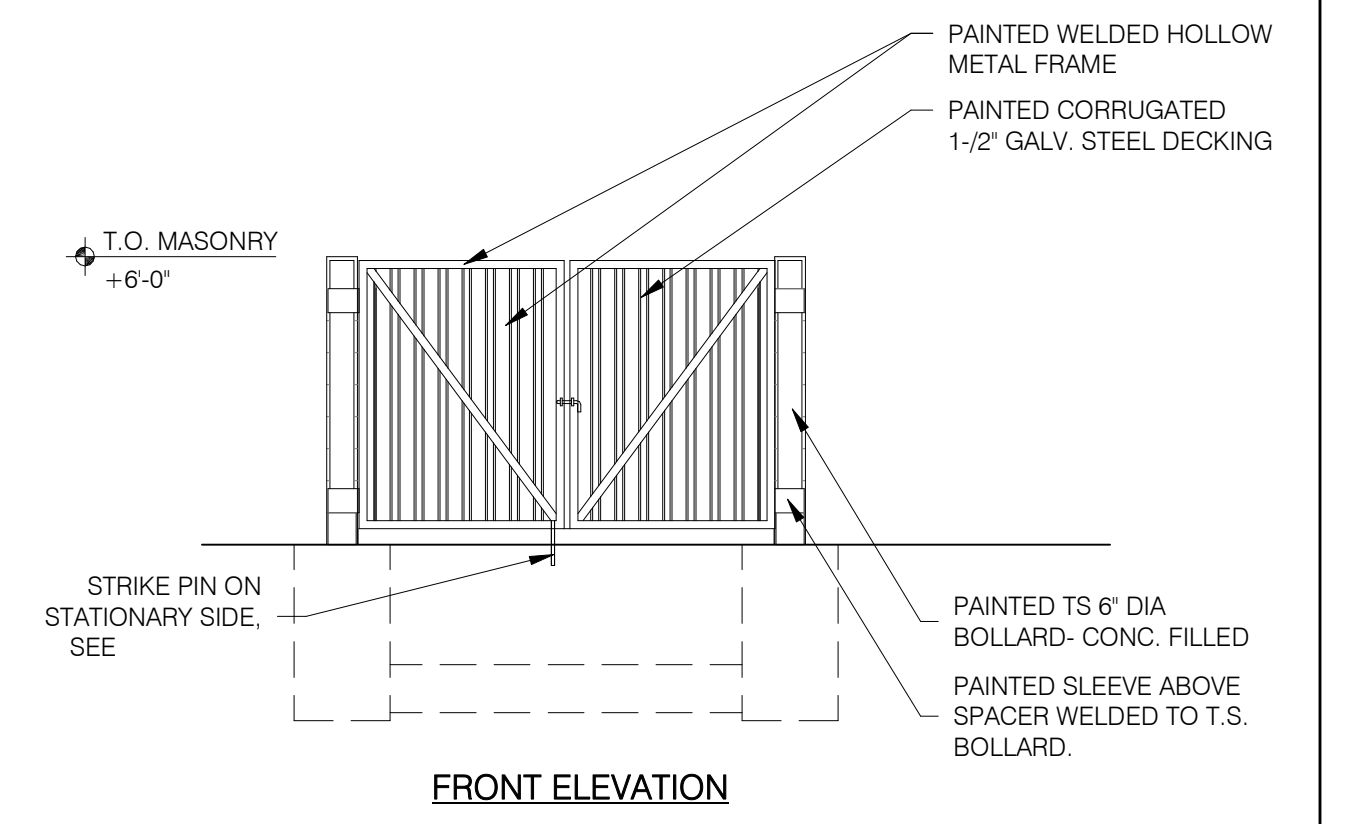
8 PERGOLA SECTION  
1/4" = 1'-0"



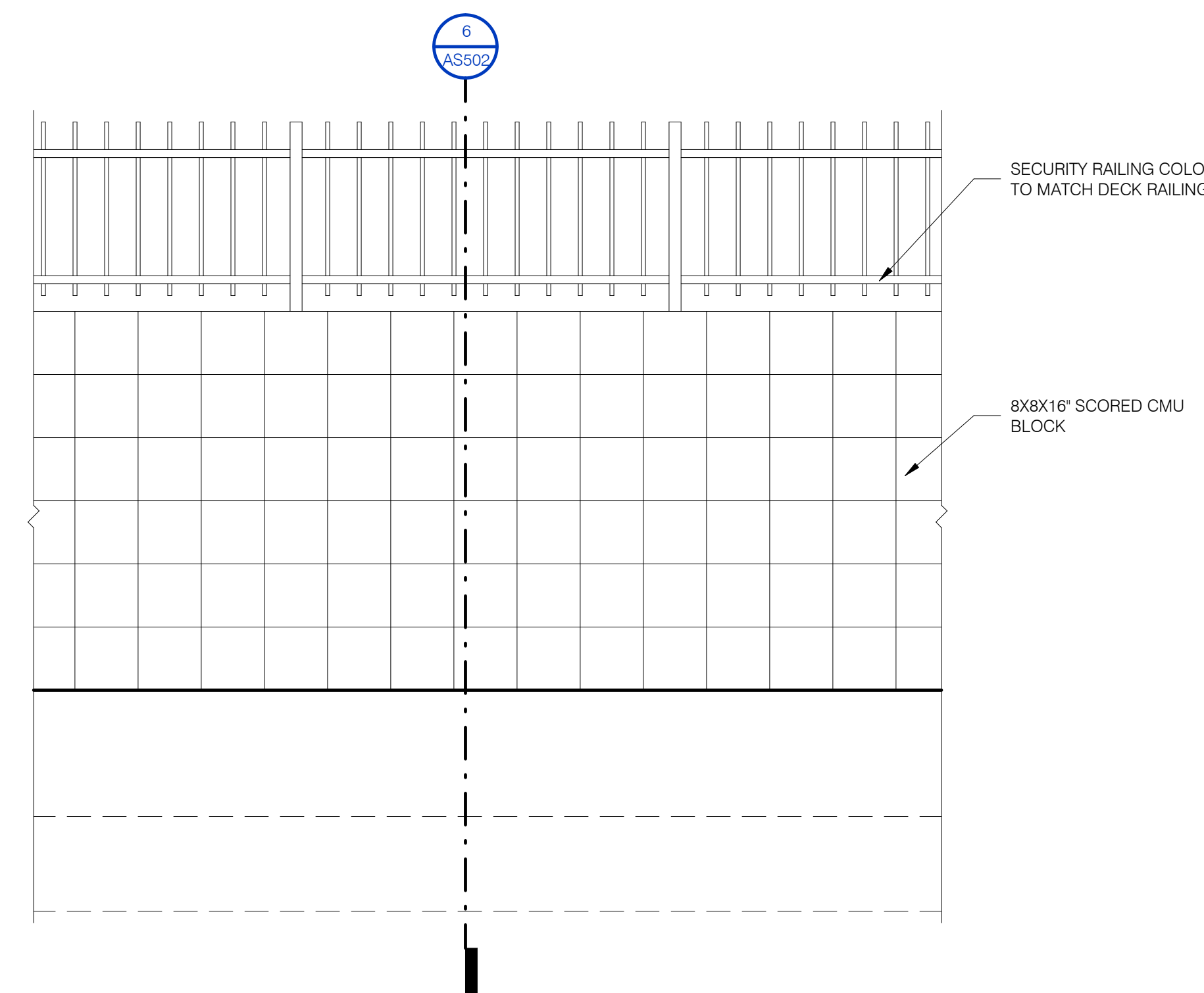
9 BIKE RACK  
1" = 1'-0"



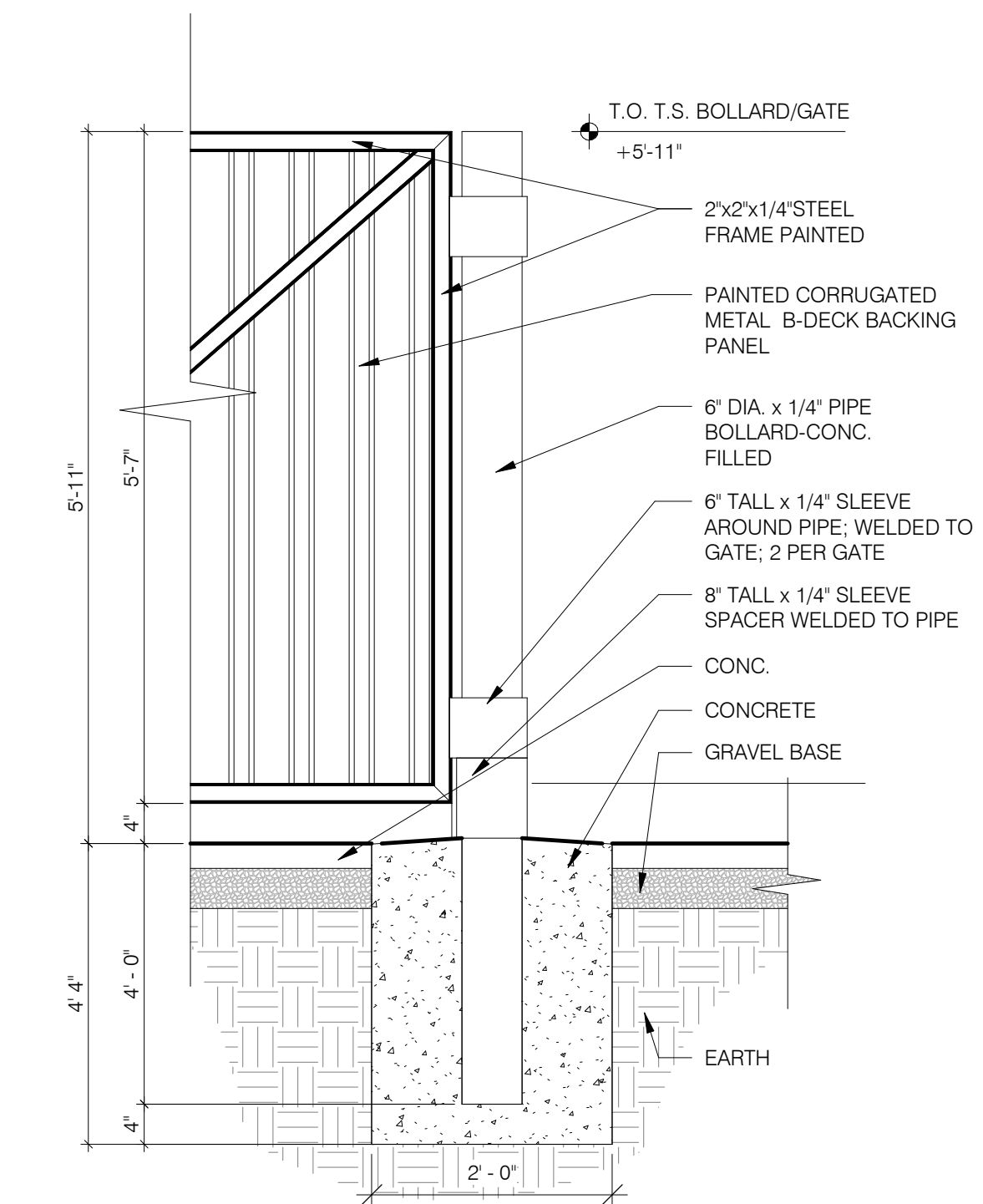
1 ENCLOSURE ELEVATIONS  
1/4" = 1'-0"



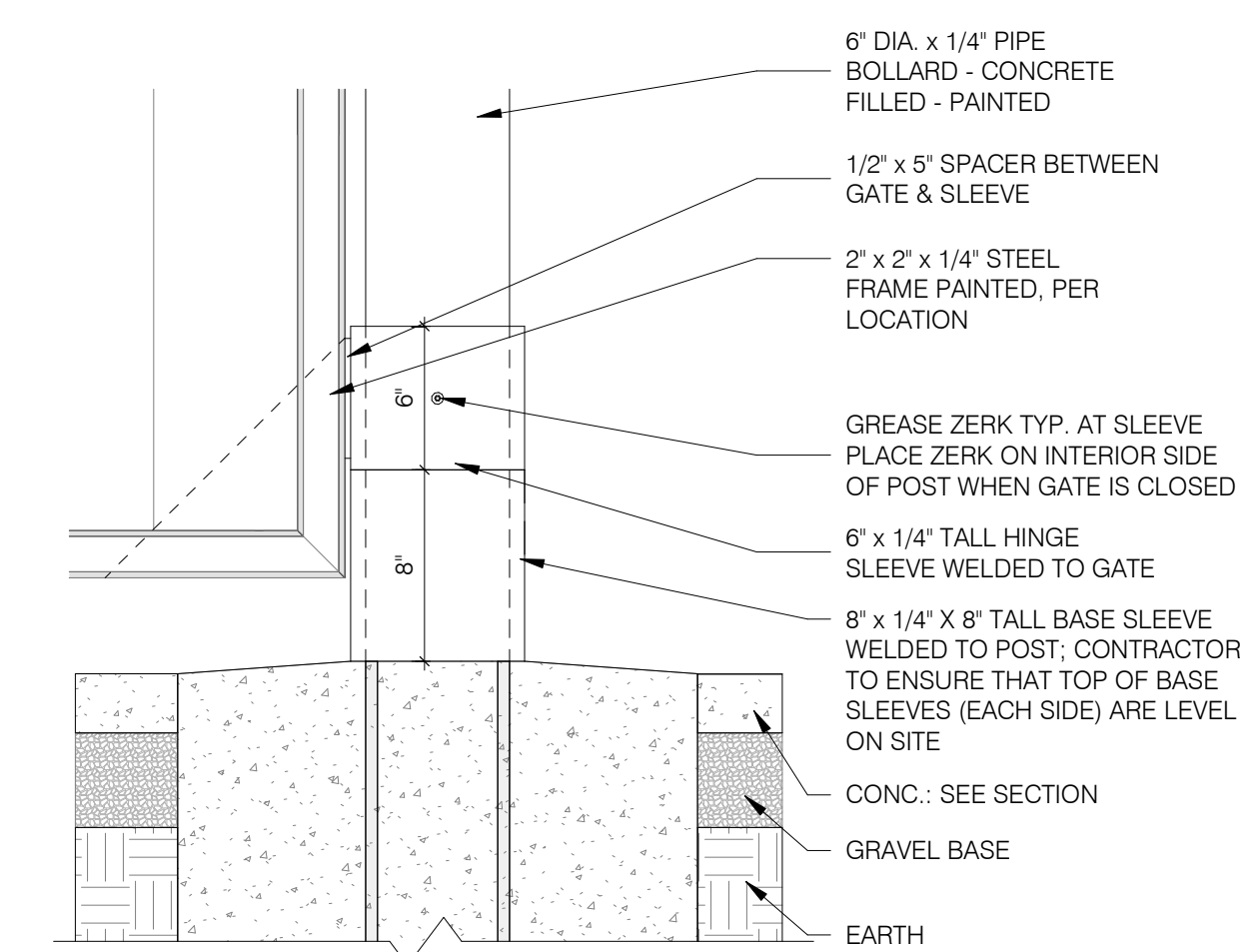
4 ENCLOSURE GATE PIN  
1 1/2" = 1'-0"



5 POOL FENCE ELEVATION  
3/4" = 1'-0"



2 ENCLOSURE GATE WALL SECTION  
3/4" = 1'-0"



3 ENCLOSURE GATE JAMB  
1 1/2" = 1'-0"













