

rdc.

245 East Third Street
Long Beach, Ca 90802
t 562.628.8000
rdcollaborative.com

Copyright © 2022

RDC-STILL, Inc.

Drawing Alteration
It is a violation of law for any person, unless acting under the direction of licensed Architect, Professional Engineer, Landscape Architect, or Land Surveyor to alter any item on this document in any way. Any licensee who alters this document is required by law to affix his or her seal and to add the notation "Altered By:" followed by his or her signature and the specific description of the alteration or revision.

DO NOT SCALE PLANS

Copying, Printing, Software and other processes required to produce these prints can stretch or shrink the actual paper or layout. Therefore, scaling of this drawing may be inaccurate. Contact Retail Design Collaborative with any need for additional dimensions or clarifications.

Issued:	Date:
A New	12.18.24

Revisions:	Date:

Project Architect/Engineer	Date:
Architect/Engineer Name	###/##/##
Project Lead	Date:
Lead Name	###/##/##

THESE DRAWINGS ARE PROTOTYPICAL AND SHALL NOT BE USED FOR ANY CONSTRUCTION OR RENOVATION ACTIVITIES. They are only for use by ALDI and their designated design professionals on ALDI projects. When applying the required professional standard of care and permitted by law, the design professional may integrate these drawings into his/her own technical submission. The design professional is responsible for preparing a submittal in accordance with all applicable laws, building codes and local site conditions. Deviations from this prototypical design are to be coordinated with the ALDI Director of Real Estate.

Seal

Seal

**ALDI Inc.**
12661 Aldi Place
Moreno Valley, CA 92555-6703
(951) 335-5750
(951) 335-5755 fax

ALDI Inc. Store #:196
East Main St.
4433 E. Main Street.,
Mesa AZ 85205

Project Name & Location:

Drawing Name:

Date:	11.04.25	Project No.
Type:	Retrofit	24189
Drawn By:	ZL	CEE-1
Scale:	As Noted	Drawing No.

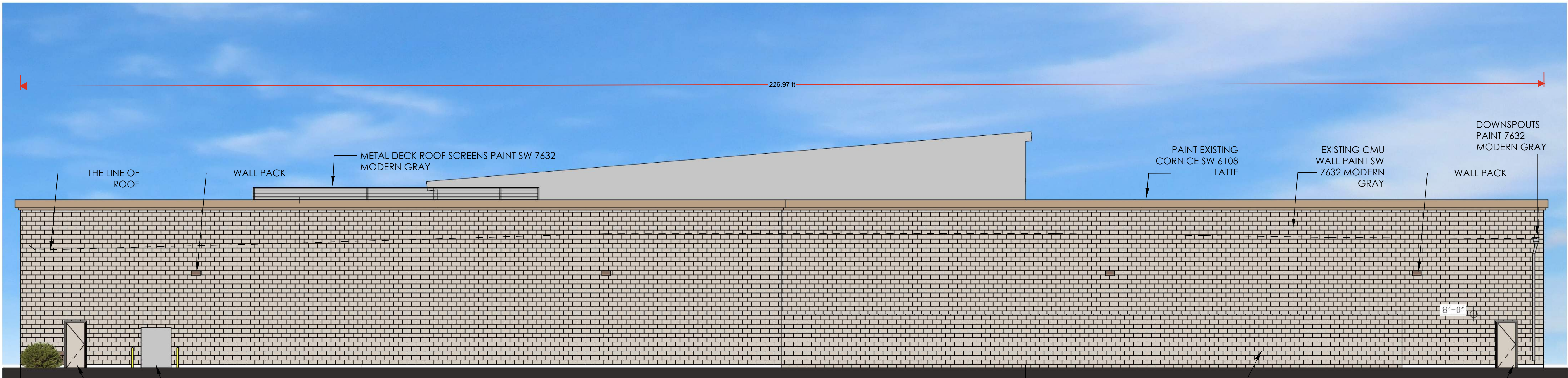


1 Front Elevation with Partial Adjacent Building (North)
SCALE: 3/32" = 1' - 0"



1 Front Elevation (North)

SCALE: 1/8" = 1' - 0"



2 Rear Elevation (South)

SCALE: 1/8" = 1' - 0"

IN COMPLIANCE WITH SECTION 11-6-3(B)(5) OF THE MZO - REASONING FOR THE ELEVATIONS - MATERIAL & COLOR		
ITEM	SQUARE FOOTAGE	PERCENTAGE
FRONT OVERALL FACADE	6,248	100%
PAINTED CMU	2,603	42%
NICHIHA COMPOSITE SIDING	1,198	19%
ALUMINUM COMPOSITE PANELS	1,181	18%
GLAZING	971	16%
PAINT PLASTER CORNICE	248	4%
TRELLIS	47	1%

IN COMPLIANCE WITH SECTION 11-6-3(B)(5) OF THE MZO - REASONING FOR THE ELEVATIONS - MATERIAL & COLOR		
ITEM	SQUARE FOOTAGE	PERCENTAGE
REAR OVERALL FACADE	5,674	100%
PAINTED CMU	5,332	94%
PAINT PLASTER CORNICE	342	6%

rdc.

245 East Third Street
Long Beach, Ca 90802
t 562.628.8000
rdcollaborative.com

Copyright © 2022

RDC5111, Inc.

Drawing Alteration
It is a violation of law for any person, unless acting under the direction of licensed Architect, Professional Engineer, Landscape Architect, or Land Surveyor to alter any item on this document in any way. Any licensee who alters this document is required by law to affix his or her seal and to add the notation "Altered By" followed by his or her signature and the specific description of the alteration or revision.

DO NOT SCALE PLANS

Copying, Printing, Software and other processes required to produce these prints can stretch or shrink the actual paper or layout. Therefore, scaling of this drawing may be inaccurate. Contact Retail Design Collaborative with any need for additional dimensions or clarifications.

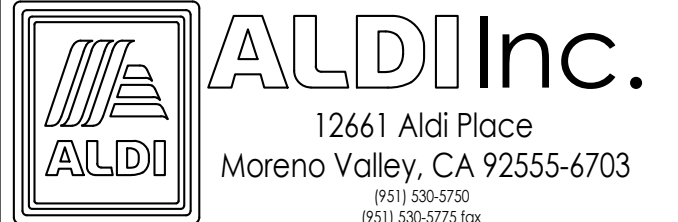
Issued:	Date:
A New	12.18.24

Revisions:	Date:

Project Architect/Engineer	Date:
Architect/Engineer Name	##/##/##
Project Lead	Date:
Lead Name	##/##/##

THESE DRAWINGS ARE PROTOTYPICAL AND SHALL NOT BE USED FOR ANY CONSTRUCTION OR RENOVATION ACTIVITIES. They are only for use by ALDI and their designated design professionals on ALDI projects. When applying the required professional standard of care and permitted by law, the design professional may integrate these drawings into his/her own technical submission. The design professional is responsible for preparing a submittal in accordance with all applicable laws, building codes and local site conditions. Deviations from this protocol of design are to be coordinated with the ALDI Director of Real Estate.

Seal Seal



ALDI Inc. Store #:196
East Main St.
4433 E. Main Street.,
Mesa AZ 85205

Project Name & Location:

Conceptual Design
Elevation Options

Drawing Name:

Date: 11.04.25 Project No. 24189

Type: Retrofit

Drawn By: ZL CEE-2

Scale: As Noted Drawing No.

rdc.

245 East Third Street
Long Beach, Ca 90802
t 562.628.8000
rdcollaborative.com

Copyright © 2022

RDC3111, Inc.

Drawing Alteration
It is a violation of law for any person, unless acting under the direction of licensed Architect, Professional Engineer, Landscape Architect, or Land Surveyor to alter any item on this document in any way. Any licensee who alters this document is required by law to affix his or her seal and to add the notation "Altered By:" followed by his or her signature and the specific description of the alteration or revision.

DO NOT SCALE PLANS

Copying, Printing, Software and other processes required to produce these prints can stretch or shrink the actual paper or layout. Therefore, scaling of this drawing may be inaccurate. Contact Retail Design Collaborative with any need for additional dimensions or clarifications.

Issued:	Date:
A New	12.18.24

Revisions:	Date:

Project Architect/Engineer	Date:
Architect/Engineer Name	###/###/##
Project Lead	Date:
Lead Name	###/###/##

THESE DRAWINGS ARE PROTOTYPICAL AND SHALL NOT BE USED FOR ANY CONSTRUCTION OR RENOVATION ACTIVITIES. They are only for use by ALDI and their designated design professionals on ALDI projects. When applying the required professional standard of care and permitted by law, the design professional may integrate these drawings into his/her own technical submission. The design professional is responsible for preparing a submittal in accordance with all applicable laws, building codes and local site conditions. Deviations from this prototypical design are to be coordinated with the ALDI Director of Real Estate.

Seal

Seal

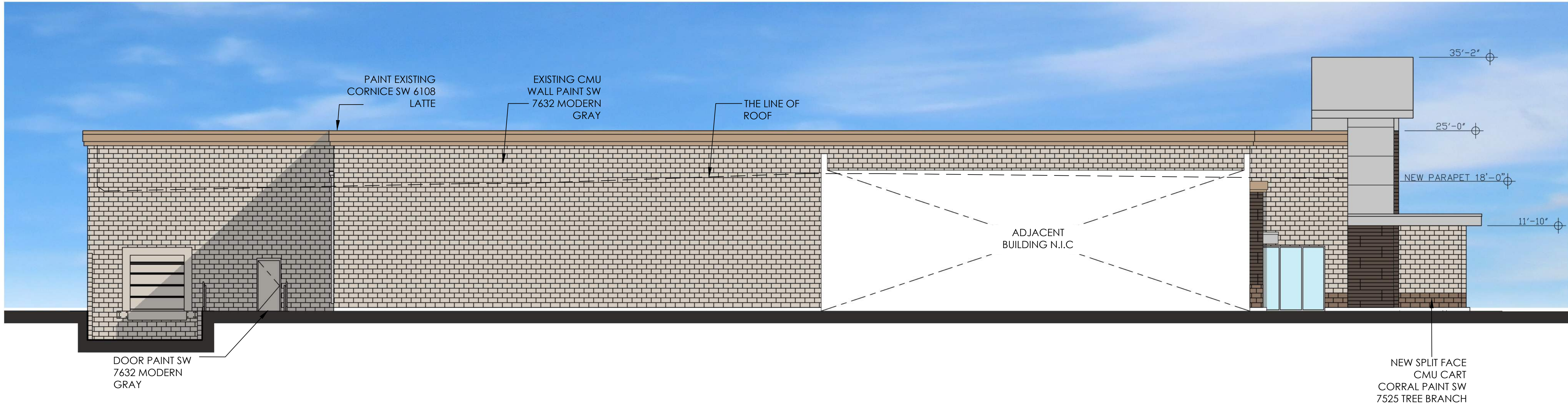
**ALDI Inc.**
12661 Aldi Place
Moreno Valley, CA 92555-6703
(951) 338-5790
(951) 338-5795 fax

ALDI Inc. Store #:196
East Main St.
4433 E. Main Street.,
Mesa AZ 85205

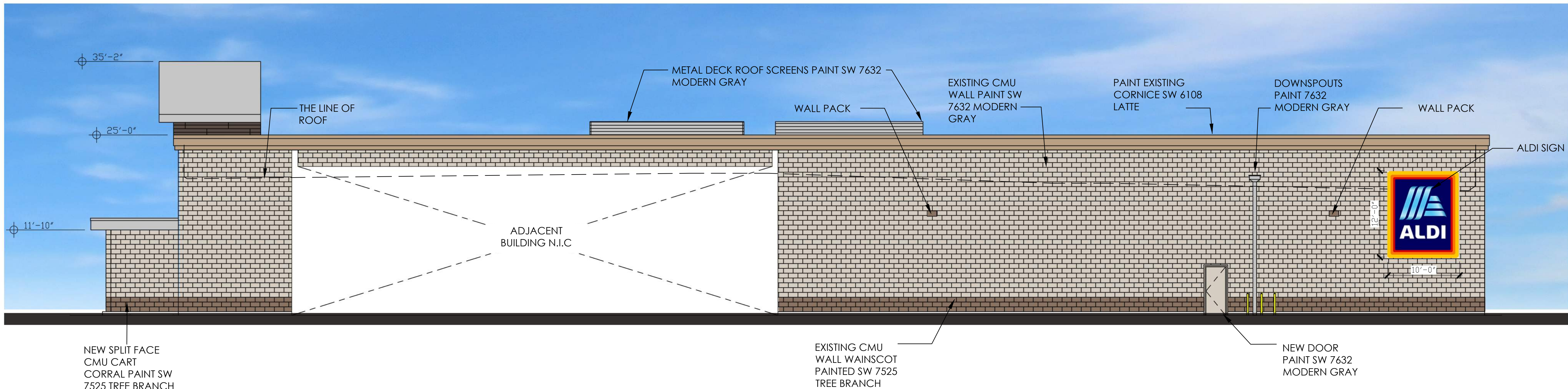
Project Name & Location:

Conceptual Design
Elevation Options

Drawing Name:	Project No.
Date: 11.04.25	24189
Type: Retrofit	CEE-3
Drawn By: ZL	
Scale: As Noted	Drawing No.



1 East Elevation (Dock Elevation)
SCALE: 1/8" = 1' - 0"



2 West Elevation (Greenfield Road Elevation)
SCALE: 1/8" = 1' - 0"

IN COMPLIANCE WITH SECTION 11-6-3[B][5] OF THE MZO - REASONING FOR THE ELEVATIONS - MATERIAL & COLOR		
ITEM	SQUARE FOOTAGE	PERCENTAGE
EAST OVERALL FACADE	4,884	100%
PAINTED CMU	4,076	83%
NICHHA COMPOSITE SIDING	116	2%
ALUMINUM COMPOSITE PANELS	247	5%
GLAZING	77	2%
PAINT PLASTER CORNICE	368	8%

IN COMPLIANCE WITH SECTION 11-6-3[B][5] OF THE MZO - REASONING FOR THE ELEVATIONS - MATERIAL & COLOR		
ITEM	SQUARE FOOTAGE	PERCENTAGE
WEST OVERALL FACADE	4,814	100%
PAINTED CMU	4,276	89%
NICHHA COMPOSITE SIDING	21	0.4%
ALUMINUM COMPOSITE PANELS	137	3%
PAINT PLASTER CORNICE	380	8%



