



Design Review Board



DRB25-00900

NTT Data Centers PH6



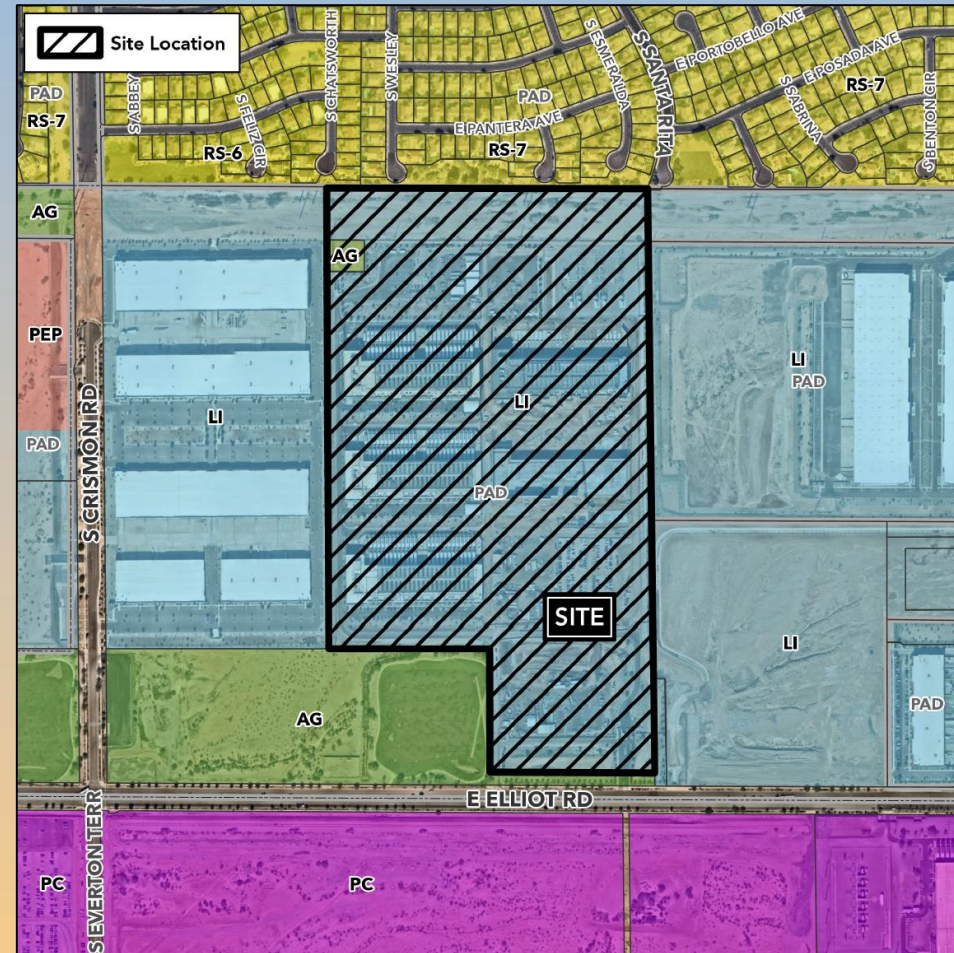
Request

- Design Review
- To allow for the expansion of a Data Center campus





Location





Site Photo



Looking north from Elliot Road



Existing Site Photo

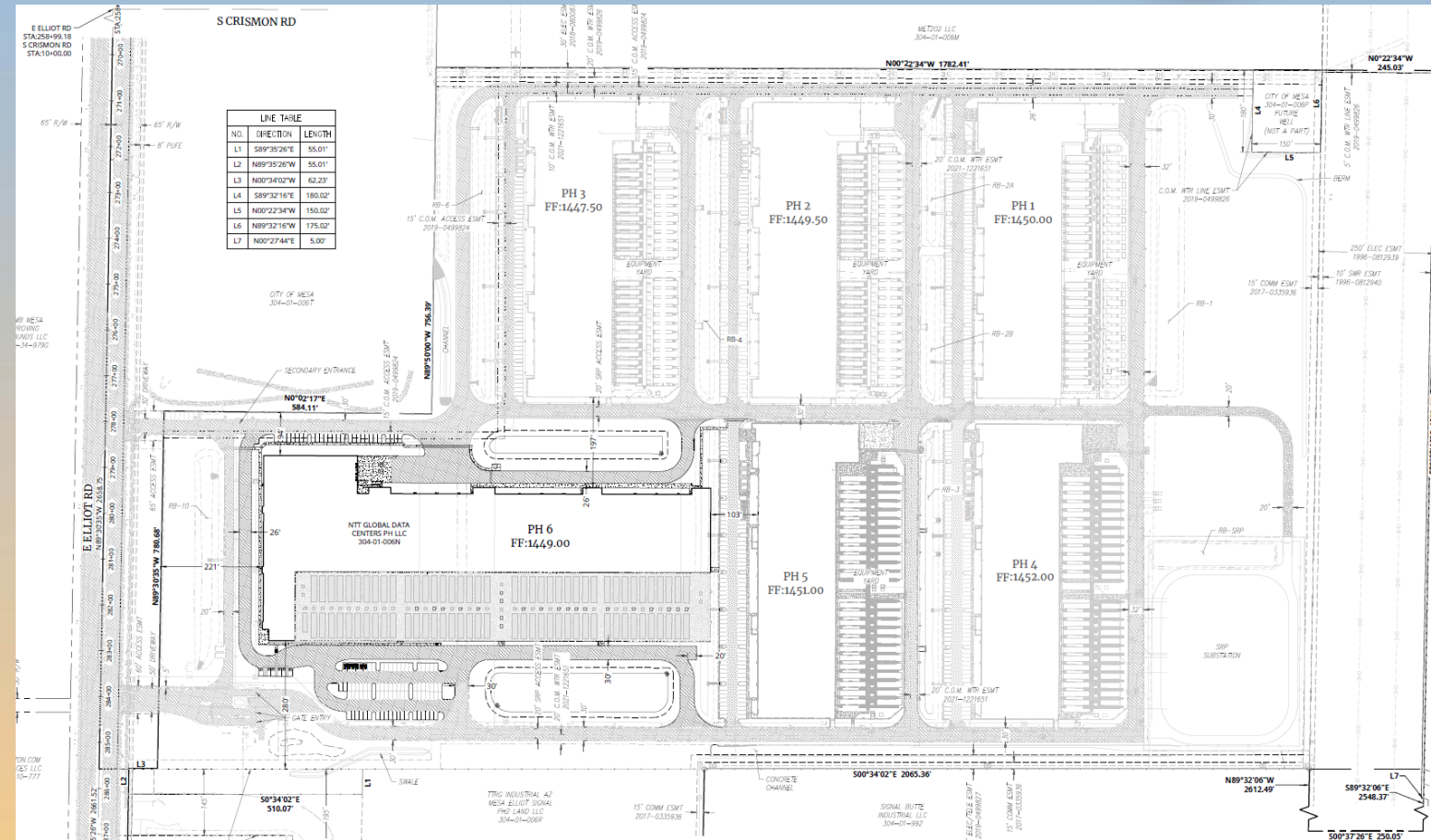


Looking north from Elliot Road



Site Plan

- Existing Data Center Site
- PH1-PH5 - under construction/ in operation
- Proposed Site Plan Modification - Two separate buildings replaced with one building of comparable size






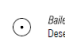

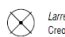











[illegible]



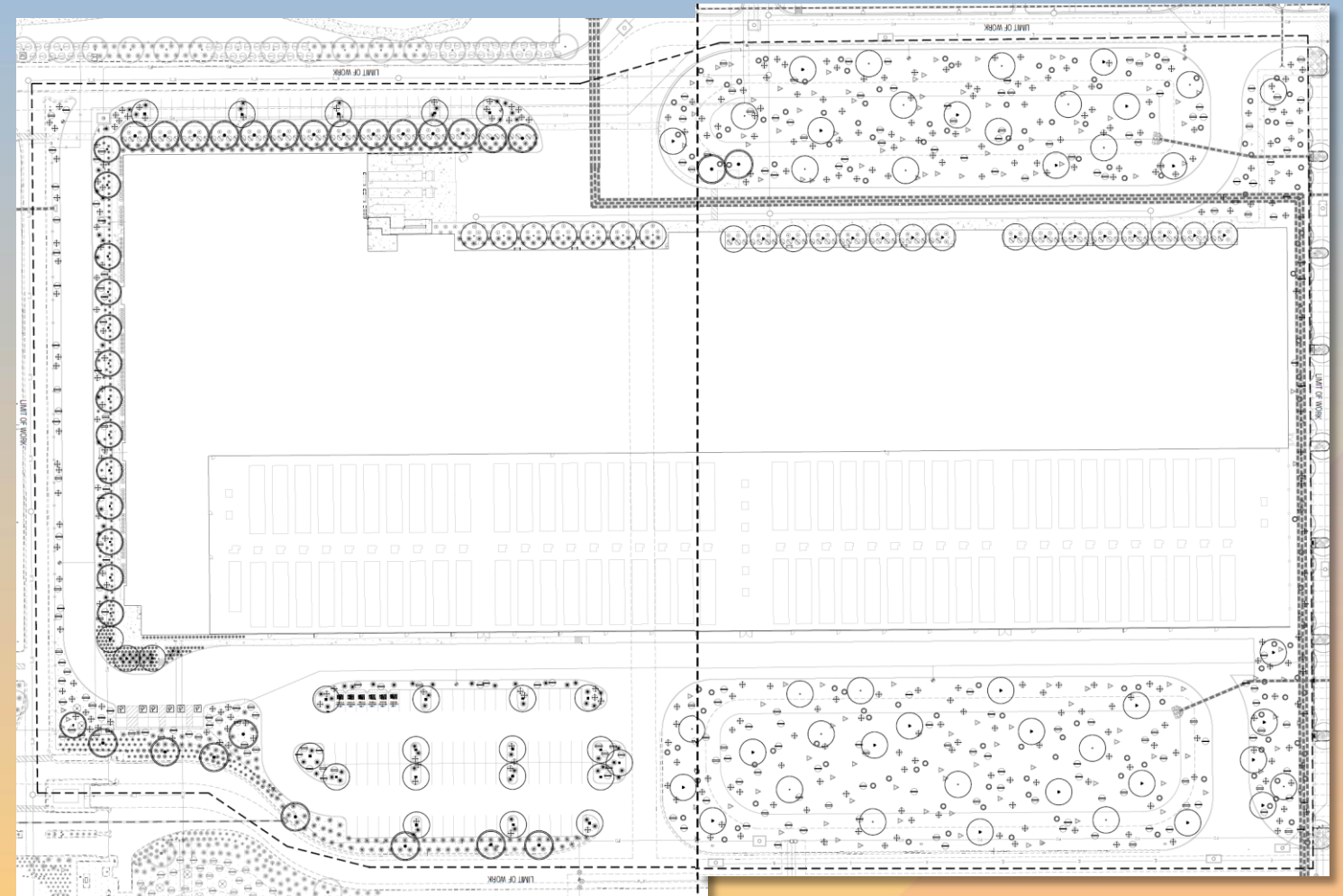
Landscape Plan

PLANT LEGEND:

SYMBOL	TYPE	SIZE	QTY	CALIPER	MATURE CANOPY	SYMBOL	TYPE	SIZE	QTY	MATURE HEIGHT
TREES						SHRUBS				
	<i>Cercidium floridum</i> Blue Palo Verde	36" Box	26	1.0-1.5	30'-0"		<i>Encelia farinosa</i> Brittlebush	5 Gallon	309	3'-0"
	<i>Chilopsis linearis</i> 'Lapuri' Desert Willow Desert Diva	24" Box	43	1.0-1.5	25'-0"		<i>Justicia californica</i> Chuparosa	5 Gallon	230	4'-0"
	<i>Prosopis hybrid</i> 'Phoenix' Thornless Hybrid Mesquite	36" Box	17	1.0-1.5	30'-0"		<i>Baileya multiradiata</i> Desert Marigold	5 Gallon	208	2'-0"
	<i>Cercidium microphyllum</i> Foothills Palo Verde	36" Box	21	2.5-3.0	25'-0"		<i>Larrea tridentata</i> Creosote Bush	5 Gallon	2	6'-0"
	<i>Olemya tesota</i> Ironwood	36" Box	14	1.0-1.5	25'-0"		<i>Simmondsia chinensis</i> Jojoba	5 Gallon	147	6'-0"
							<i>Calliandra eriophylla</i>	5 Gallon	114	3'-0"

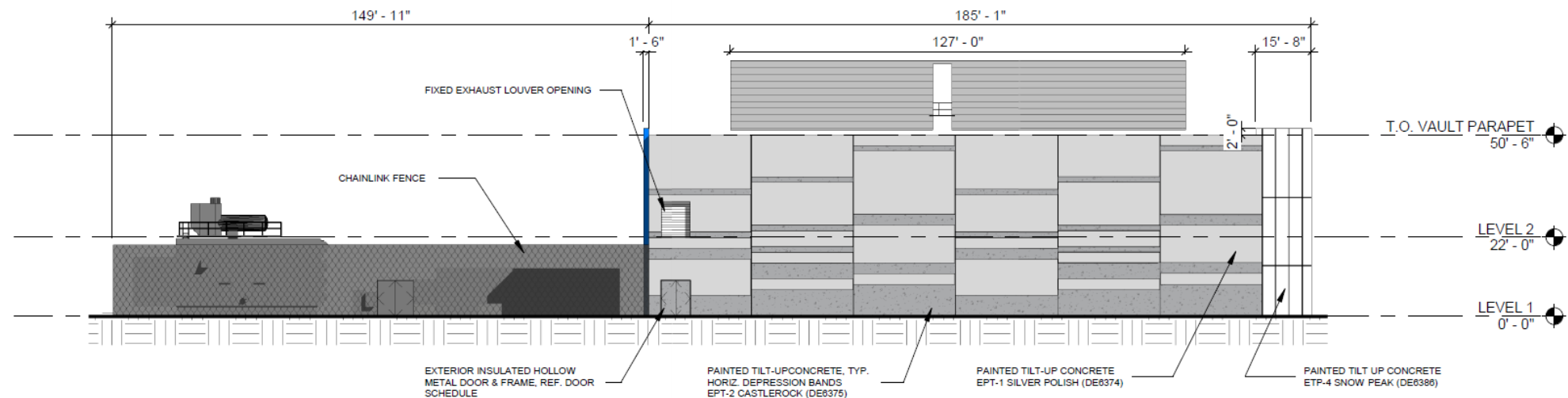
SYMBOL	TYPE	SIZE	QTY	MATURE HEIGHT
ACCENTS				
	<i>Aloe barbadensis</i> Yellow Blooming Aloe	5 Gallon	161	2'-0"
	<i>Dasylirion walteri</i> Desert Spoon	5 Gallon	93	3'-0"
	<i>Muhlenbergia rigens</i> Deer Grass	5 Gallon	30	4'-0"
	<i>Hesperaloe funifera</i> Giant Hesperaloe	5 Gallon	219	6'-0"
	<i>Hesperaloe parviflora</i> Red Yucca	5 Gallon	155	3'-0"
	<i>Opuntia ficus-indica</i> Indian Fig	5 Gallon	126	15'-0"

Note:
All planting areas to have 2" depth decomposed granite.
Refer to ments plan (L.O.05) for size and color.





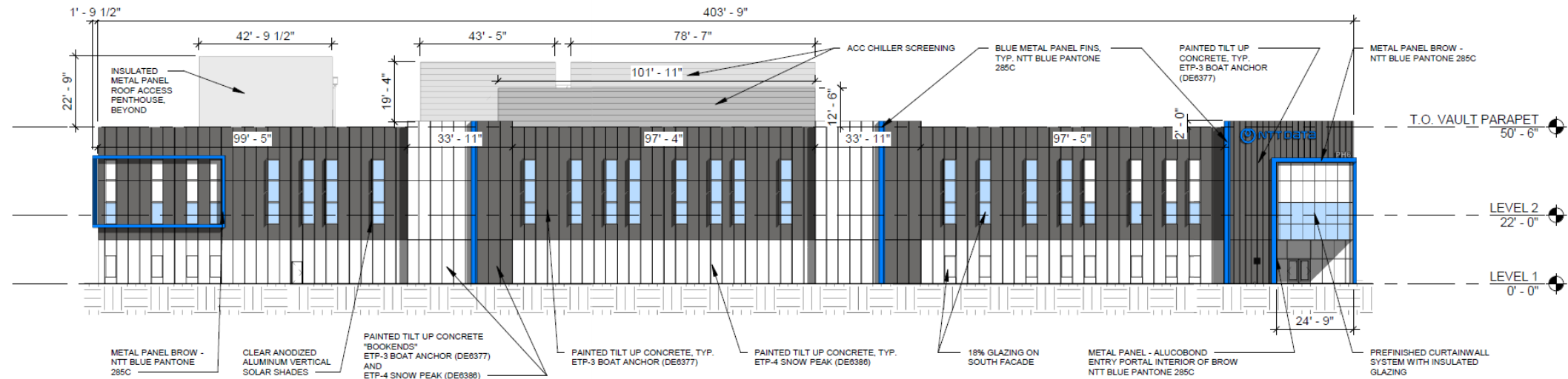
Building Elevations



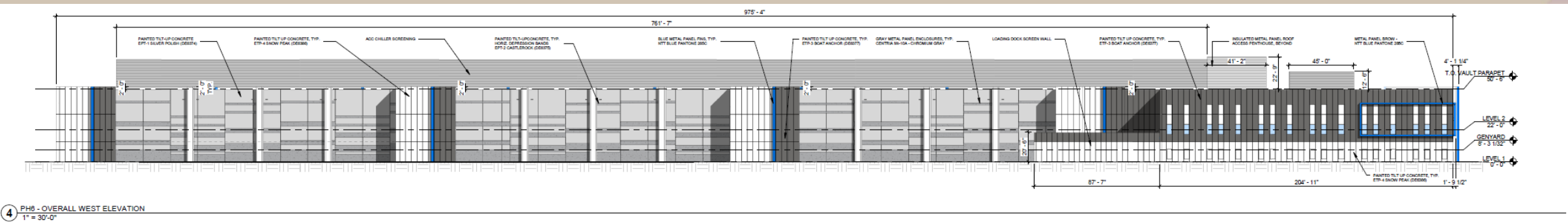
1 PH6 - OVERALL NORTH ELEVATION
 1" = 30'-0"



Building Elevations



2 PH6 - OVERALL SOUTH ELEVATION
1" = 30'-0"





Renderings





Renderings





Colors and Materials

EXTERIOR MATERIALS KEY			
<p>1</p> <p>NTT Blue #0072BC R0 G114 B188 C100 M50 Y0 K0 Pantone 285c</p> <p>INSULATED METAL PANEL INSIDE ENTRY PORTAL /BROW</p>	<p>2</p> <p>BOAT ANCHOR DE6377</p> <p>5</p> <p>SNOW PEAK DE6386</p> <p>PAINTED TILT UP CONCRETE</p>	<p>8</p> <p>NTT BLUE PANTONE 285c VERTICAL FIN</p> <p>METAL PANEL ELEMENTS</p>	<p>11</p> <p>BLUE SPANDEL GLASS UNIT</p> <p>12</p> <p>BLUE VISION GLASS UNIT</p> <p>13</p> <p>CLEAR ANODIZED MULLION FRAMING</p> <p>14</p> <p>CLEAR ANODIZED ALUMINUM VERTICAL SOLAR SHADE (SOUTH FACADE ONLY)</p> <p>INSULATED GLASS UNITS CURTAINWALL SYSTEM</p>



Colors and Materials

EXTERIOR MATERIALS KEY

1



NTT Blue

#0072BC
R0 G114 B188
C100 M50 Y0 K0
Pantone 285c

INSULATED METAL PANEL
INSIDE ENTRY PORTAL/BROW

2



BOAT ANCHOR
DE6377

3



SILVER POLISH
DE6374

6



XL PEWTER
CENTRIA - 9967
DOWNSPOUT ENCLOSURE

8



NTT BLUE
PANTONE 285c
VERTICAL FIN

11



BLUE SPANDREL
GLASS UNIT

12



BLUE VISION
GLASS UNIT

4



CASTLEROCK
DE6375

5



SNOW PEAK
DE6386

7



CHROMIUM GRAY
CENTRIA - 9/71
ENTRY BROW

7s

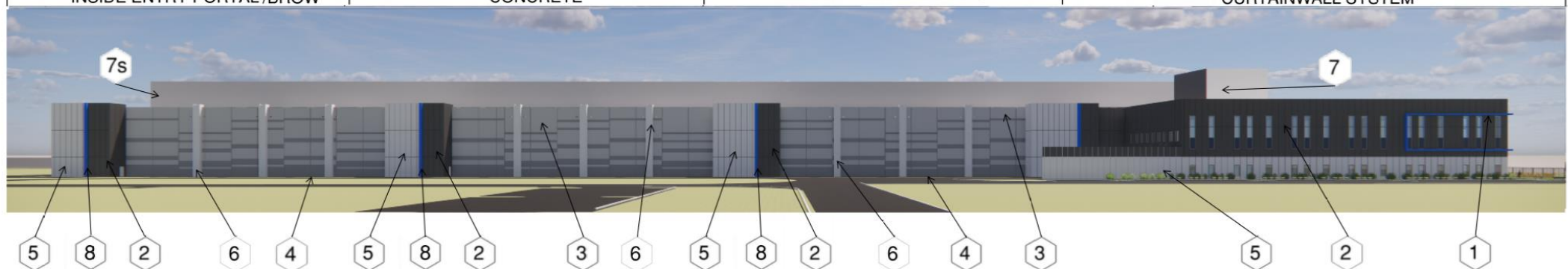


PAINTED GRAY
SILVER POLISH
METAL DECK ROOFTOP SCREENWALL

13



CLEAR ANODIZED
MULLION FRAMING
INSULATED GLASS UNITS
CURTAINWALL SYSTEM





Alternative Compliance

- ✓ Materials. To reduce the apparent massing and scale of buildings, facades shall incorporate at least 3 different and distinct materials.
- ✓ Materials. No more than 50% of the total façade may be covered with one (1) single material.



Findings

Staff is seeking your review and recommendation on the following:

- ✓ Proposed building elevations and landscape plan
- ✓ Proposed alternative compliance

Staff welcomes any feedback



Design Review Board