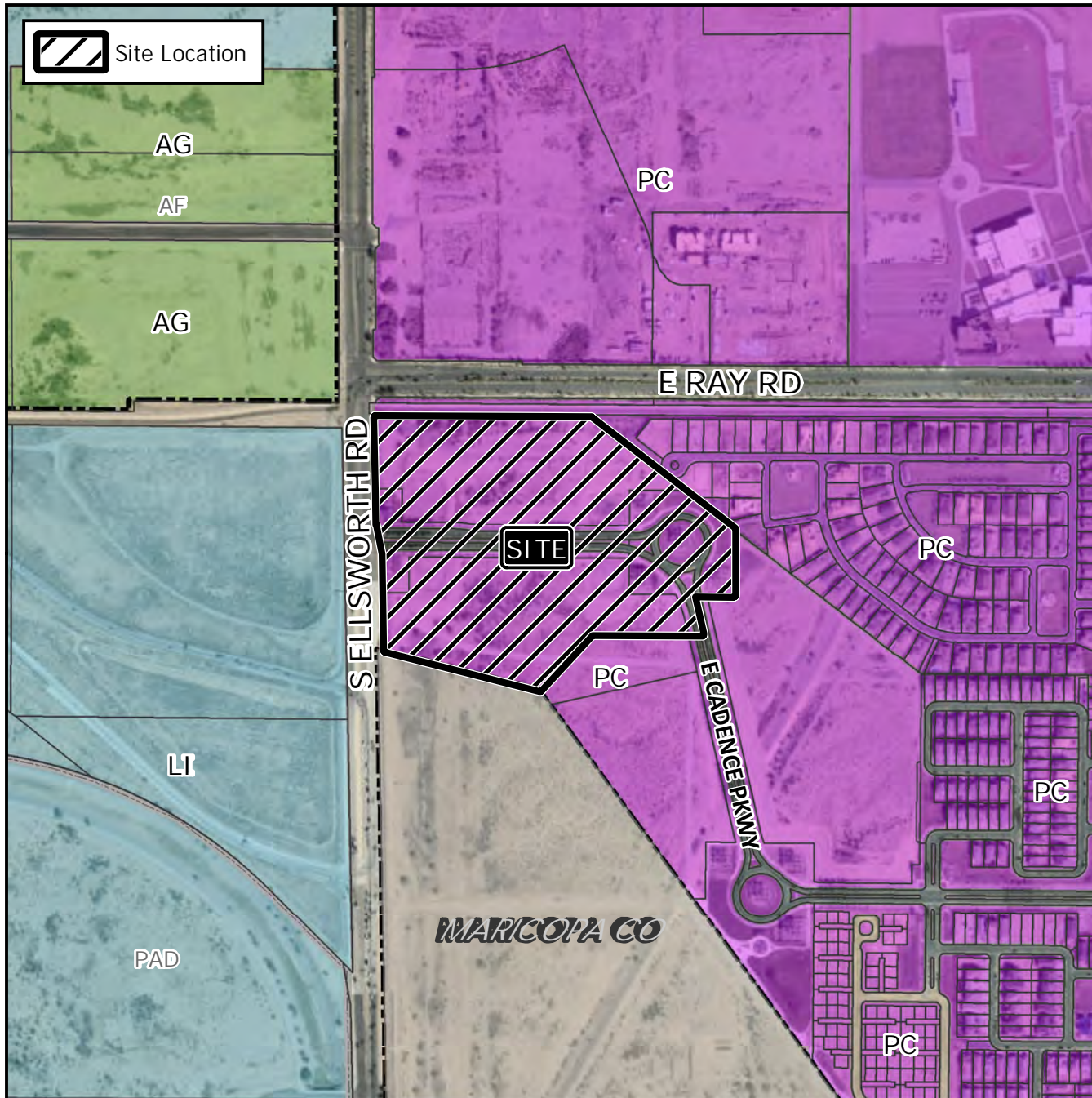


# Board of Adjustment Vicinity Map: BOA20-00226



## Case Details

Case:

BOA20-00226

Site / Address:

District 6. Within the 9200 to 9400 blocks of East Ray Road (south side); the 5200 to 5400 blocks of South Ellsworth Road (east side); and within the 9200 to 9400 blocks of East Cadence Parkway (both sides). Located south of Ray Road and East of Ellsworth Road.

Request:

Requesting a Special Use Permit (SUP) to allow a Comprehensive Sign Plan (CSP) for large commercial development located in the PC District.

