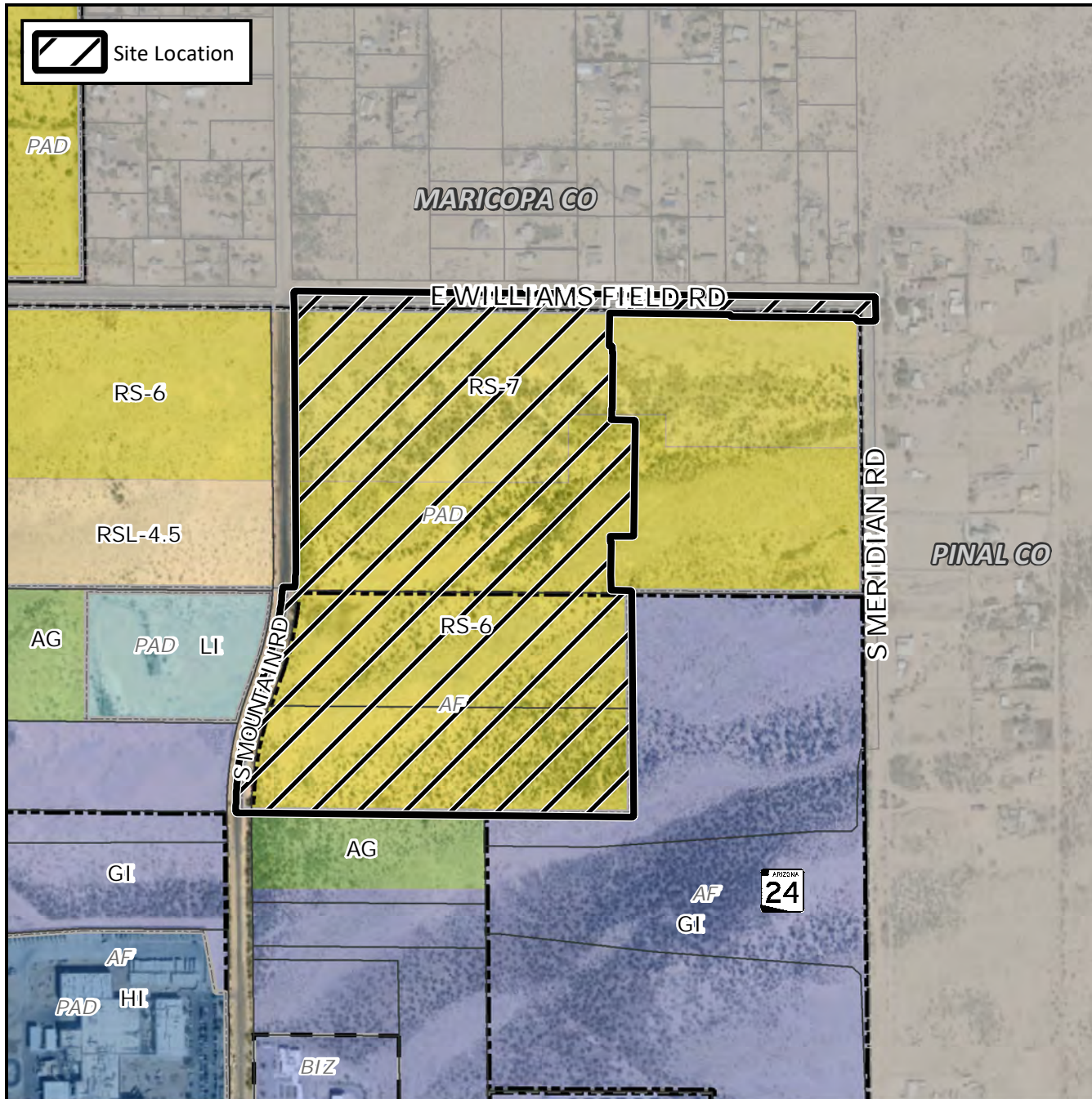


# Final Plat Vicinity Map



# Case Details

## Project:

Destination at Gateway East - Phase 1

## Site/Address:

District 6. Within the 11200 to 11600 blocks of East Williams Field Road (south side) and within the 6000 to 6400 blocks of South Mountain Road (east side). Located west of Meridian Road and south of Williams Field Road. (83.02± acres).

## Description:

Ashton Woods Arizona, LLC, Developer.  
Raymond S Munoz III, EPS Group,  
Surveyor.

