

THE STUDIOS AT MESA

Historic Preservation Board Meeting

August 4th, 2020

Gensler

AGENDA

1 THE HISTORY AND CONTEXT

2 HISTORIC ATTRIBUTES

BREEZE BLOCK

MAIN STAIR

CANOPY

3 OVERALL BUILDING DESIGN

4 CANOPY DESIGN STRATEGIES

THE HISTORY AND CONTEXT



HOMAGE TO THE LIBRARY

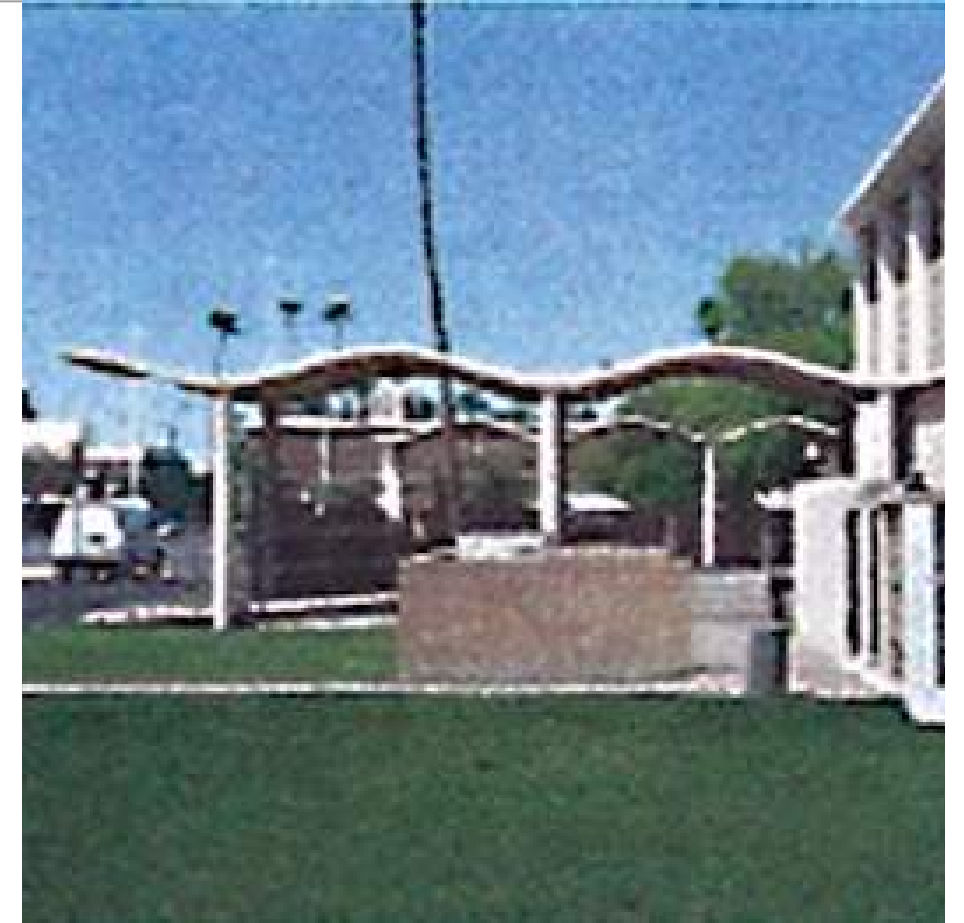
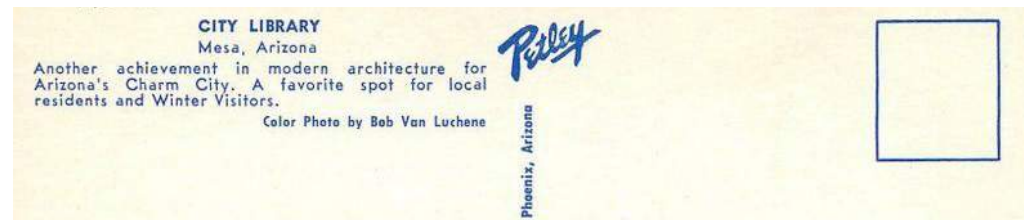
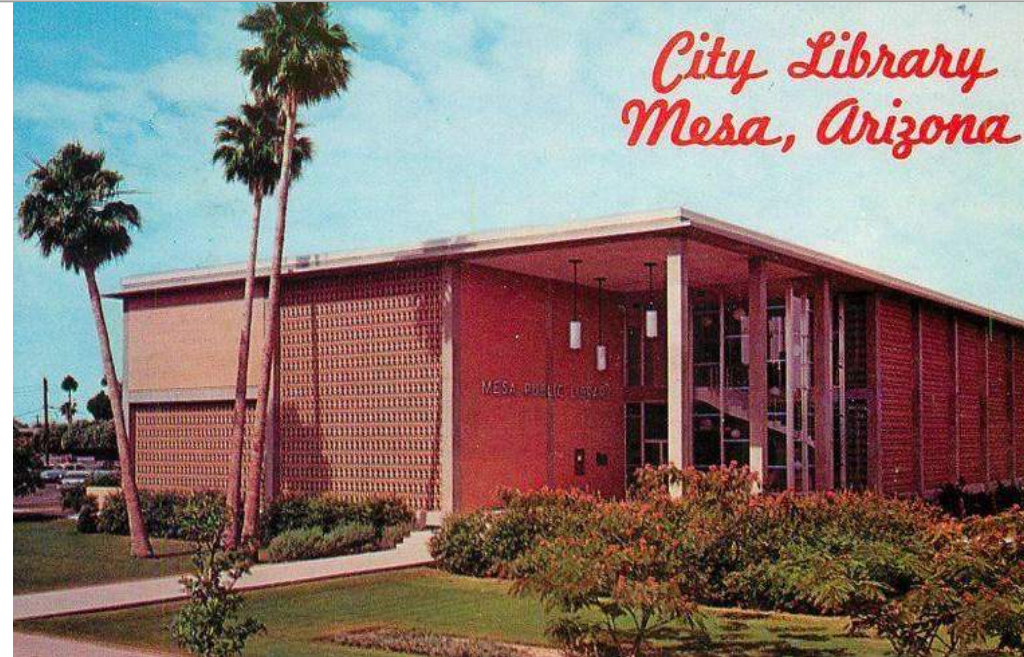


HISTORICAL IMPORTANCE

This beautiful midcentury building was the first original public library in the city of Mesa.

What is the future of libraries? It is a place for community and relationships, discovery, sustainability, and research.

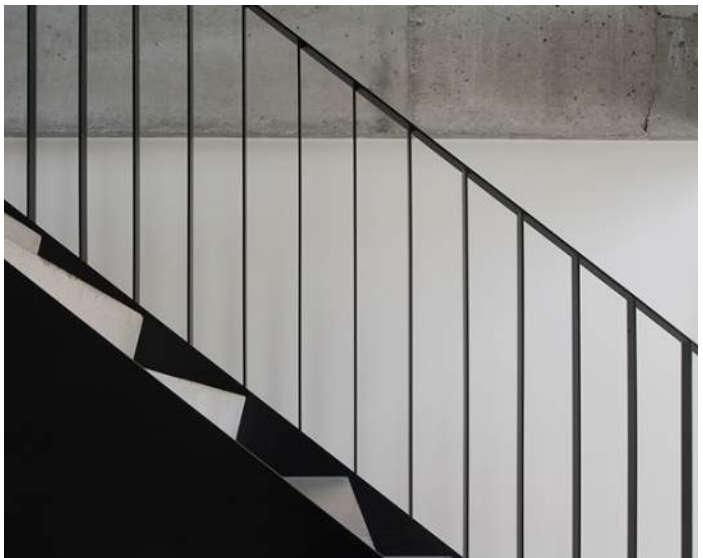
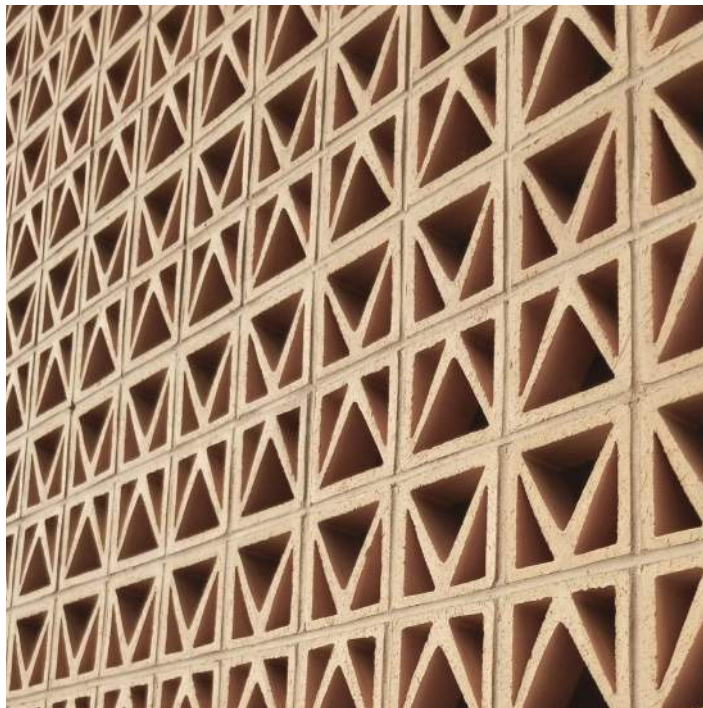
The Studios at Mesa will not only preserve the historic architecture and interiors, but also what a library means for the community.



OVERALL BUILDING STRATEGY



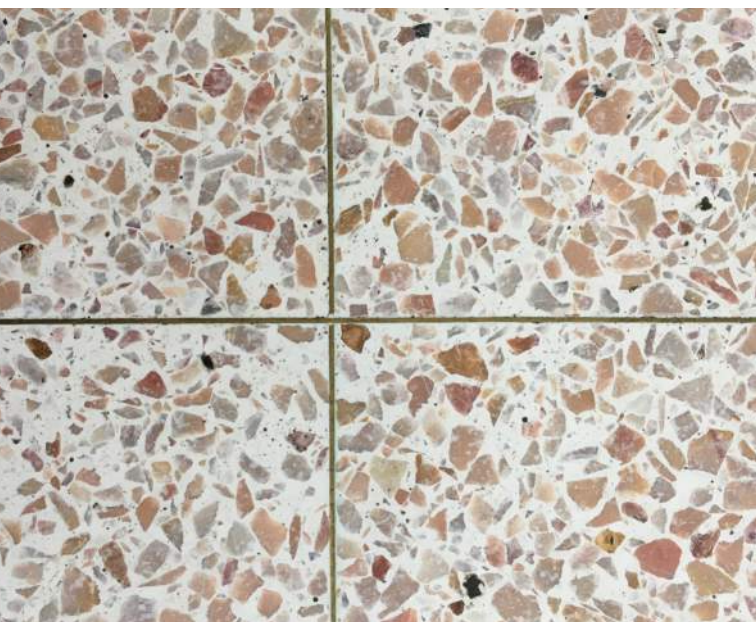
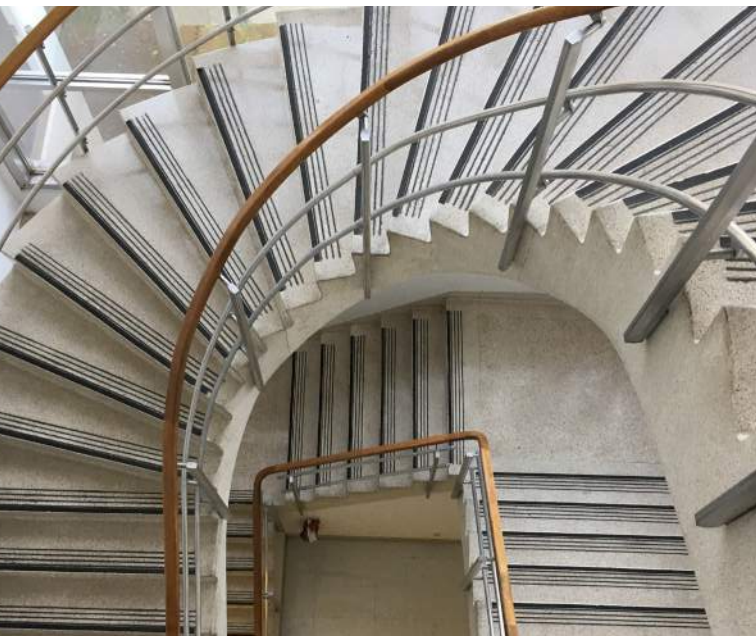
INSPIRATION



INSPIRATION



HISTORIC BUILDING ATTRIBUTES

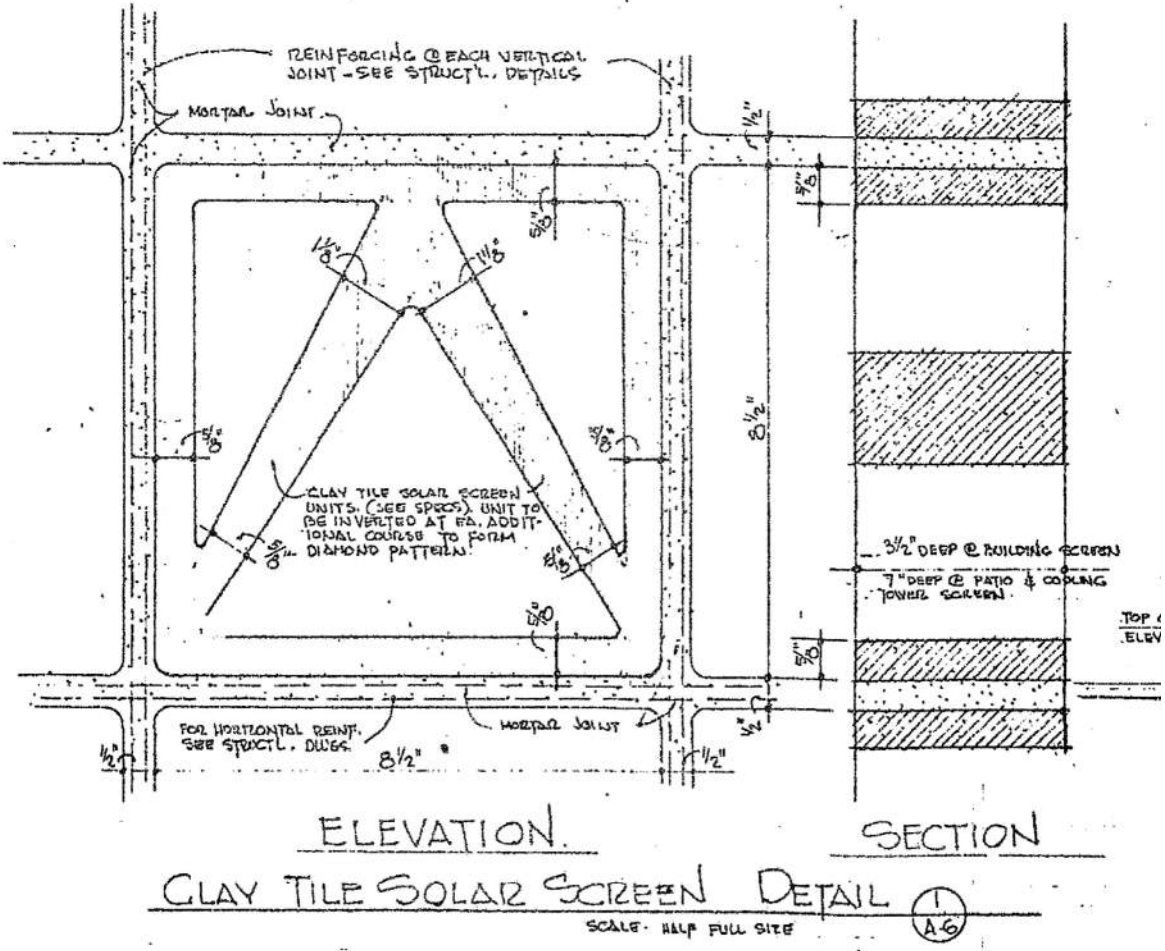
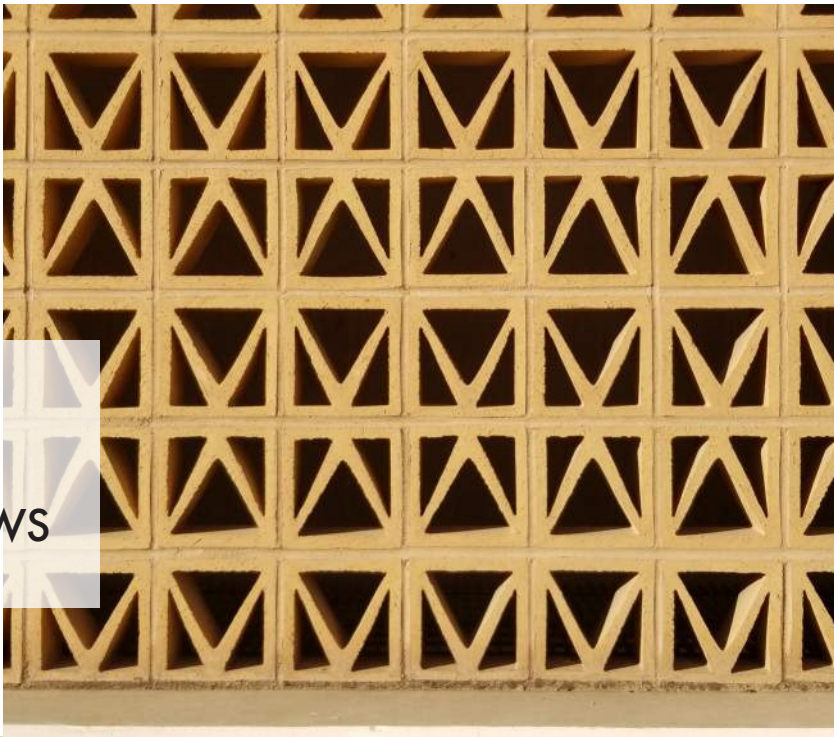


DESIGN STRATEGY FOR THE BREEZE BLOCK



STRATEGY

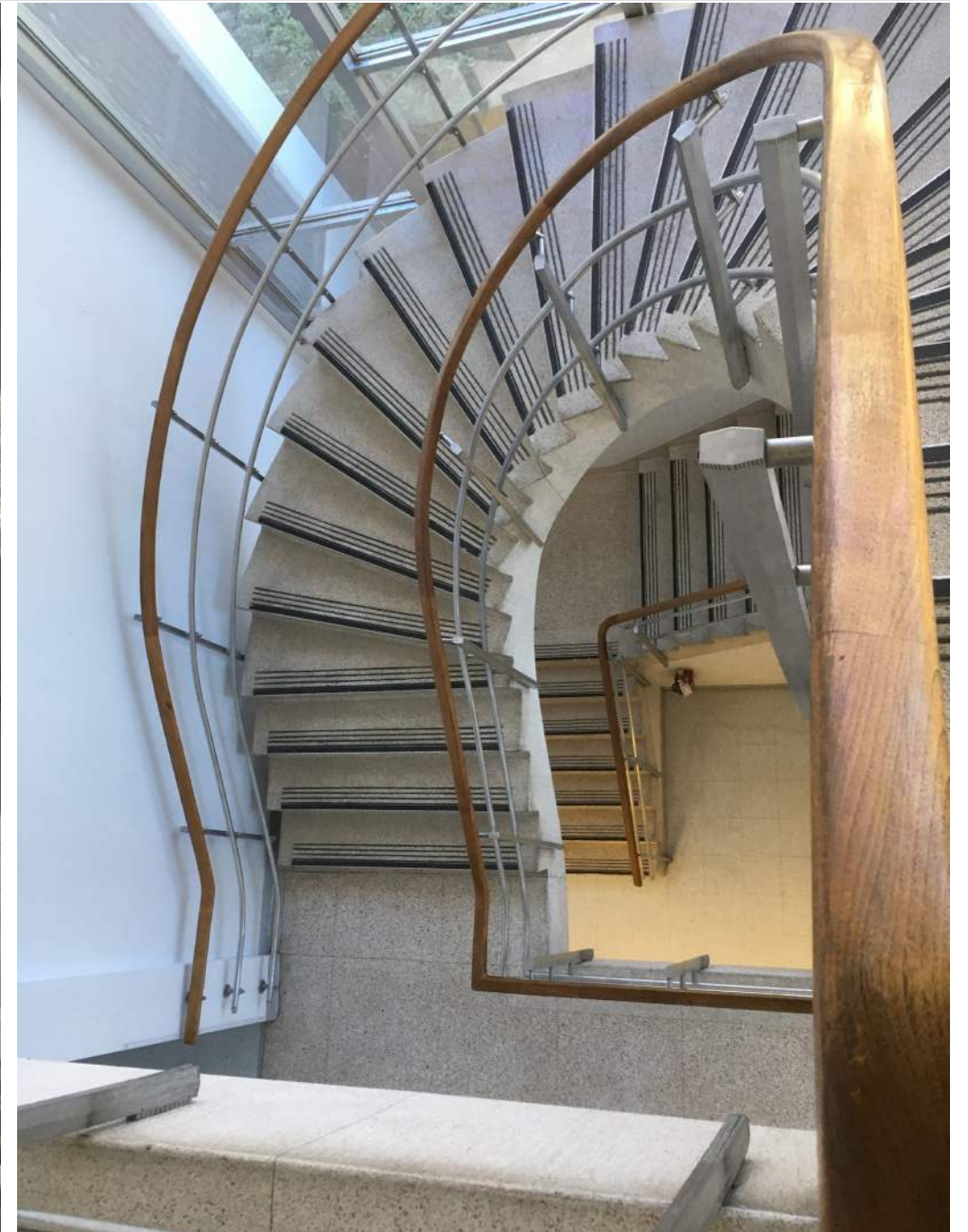
- LEAVE INTACT
- IMPROVE DAYLIGHTING / VIEWS



DESIGN STRATEGY FOR THE MAIN STAIR

STRATEGY

- LEAVE INTACT
- OPEN VIEWS
- EMPHASIZE CURVED FORMS



DESIGN STRATEGY FOR THE CANOPIES



CHARACTERISTICS

- PROVIDE SHADE
- ANNOUNCE ENTRY
- HAVE CURVED FORMS



OVERALL BUILDING DESIGN

- 1 NEW LOBBY
- 2 NEW EXTERIOR RESTROOM CORE
- 3 OVERALL INTERIOR LOOK AND FEEL

NEW LOBBY



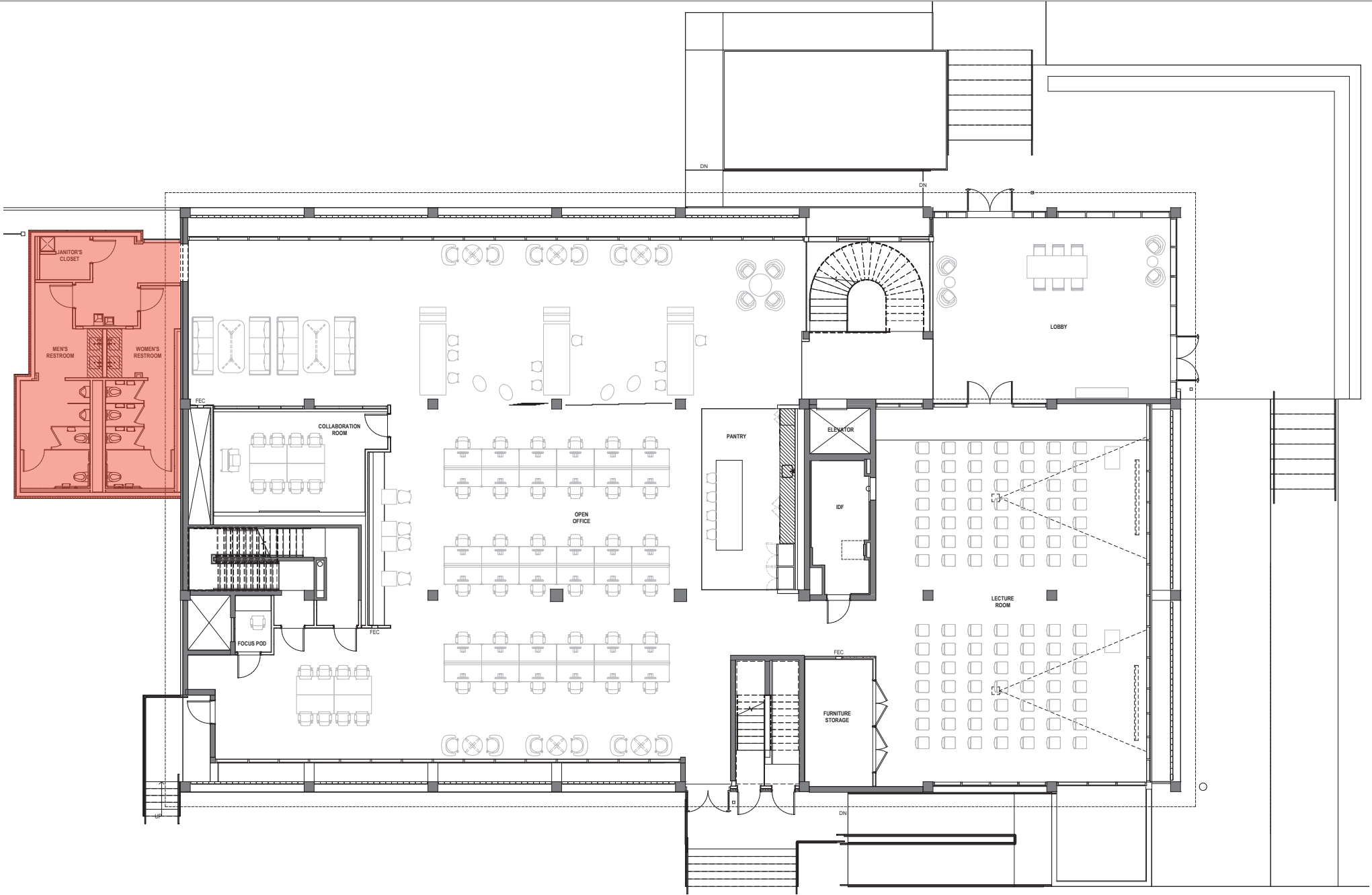
NEW LOBBY



NEW LOBBY



NEW EXTERIOR CORE



LEVEL 1 FLOORPLAN

NEW EXTERIOR CORE



OVERALL LOOK AND FEEL - MULTIPURPOSE



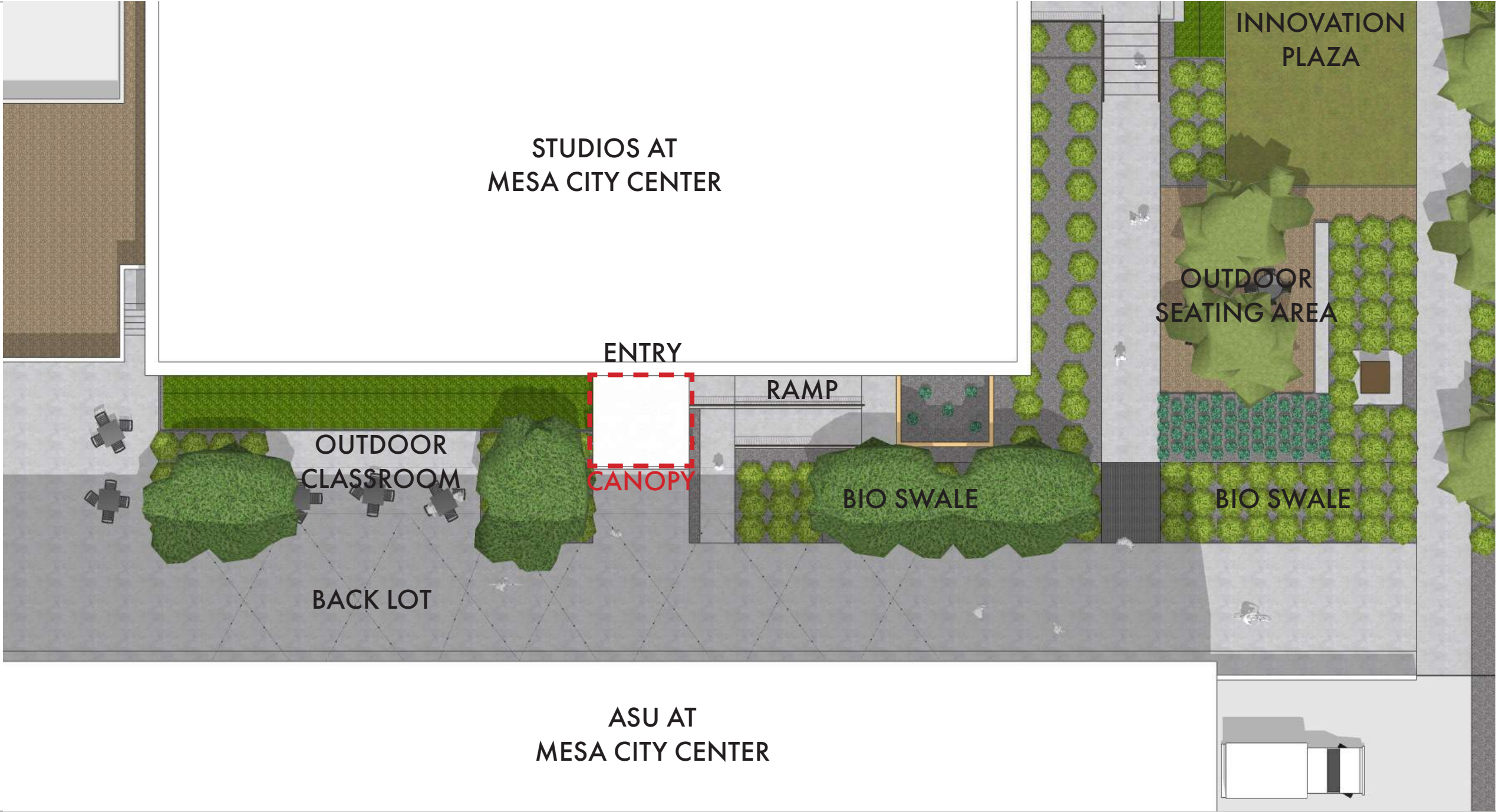
OVERALL LOOK AND FEEL - COLLABORATION AREA



DESIGN STRATEGY FOR THE CANOPIES

- 1 RE-CREATE SHADE ELEMENT THAT IS HISTORICALLY INSPIRED
- 2 ARTISTICALLY INTEGRATE ELEMENTS OF THE EXISTING CANOPIES ON SITE
- 3 CAPTURE AND DOCUMENT THE STORY OF THIS BUILDING

DESIGN STRATEGY FOR THE CANOPIES



DESIGN STRATEGY FOR THE CANOPIES



ARTISTICALLY INTEGRATE ELEMENTS OF THE EXISTING CANOPIES



ARTISTICALLY INTEGRATE ELEMENTS OF THE EXISTING CANOPIES



ARTISTICALLY INTEGRATE ELEMENTS OF THE EXISTING CANOPIES

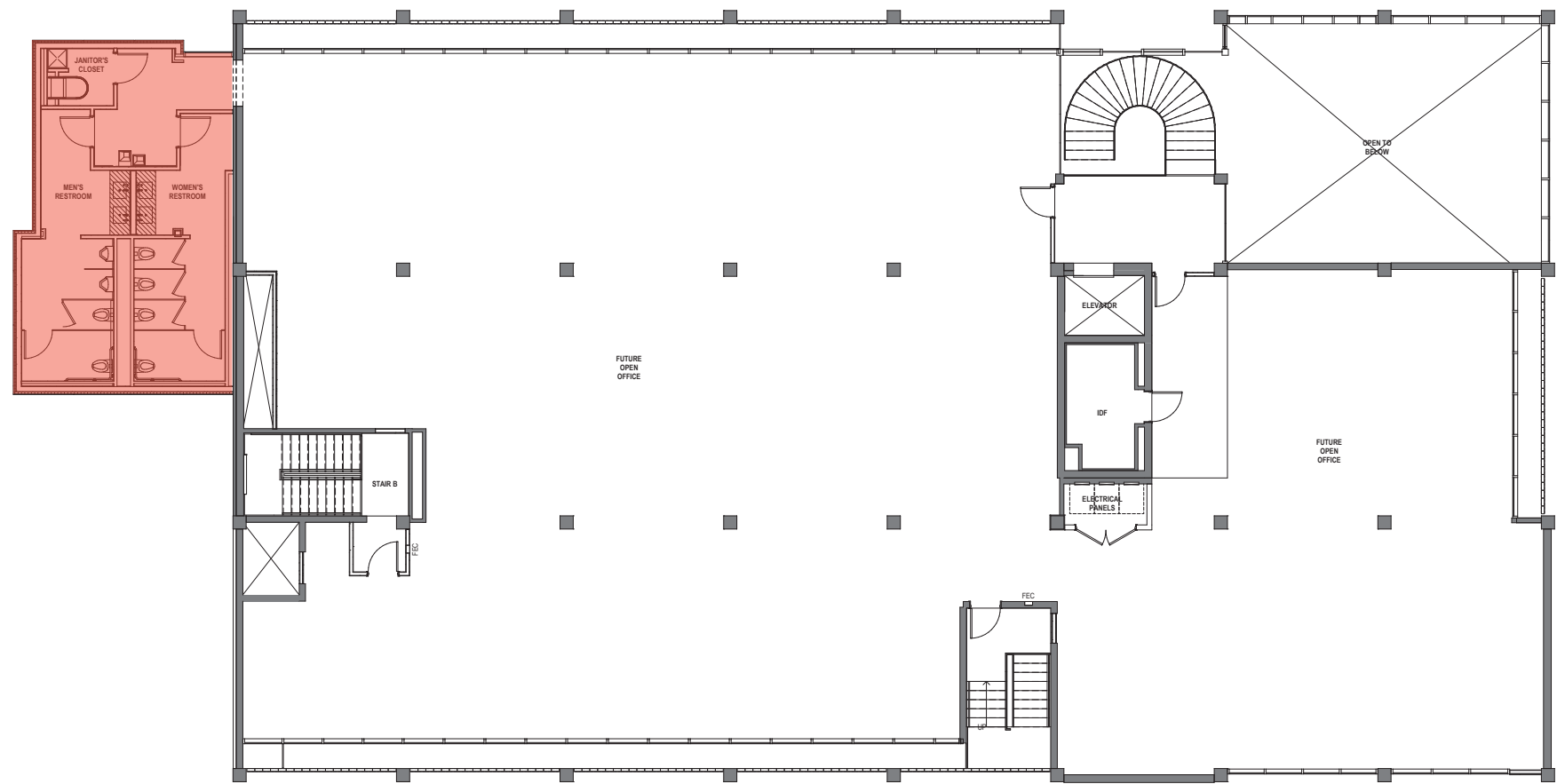


These Remnants of the existing canopies have been transformed into this sculpture.



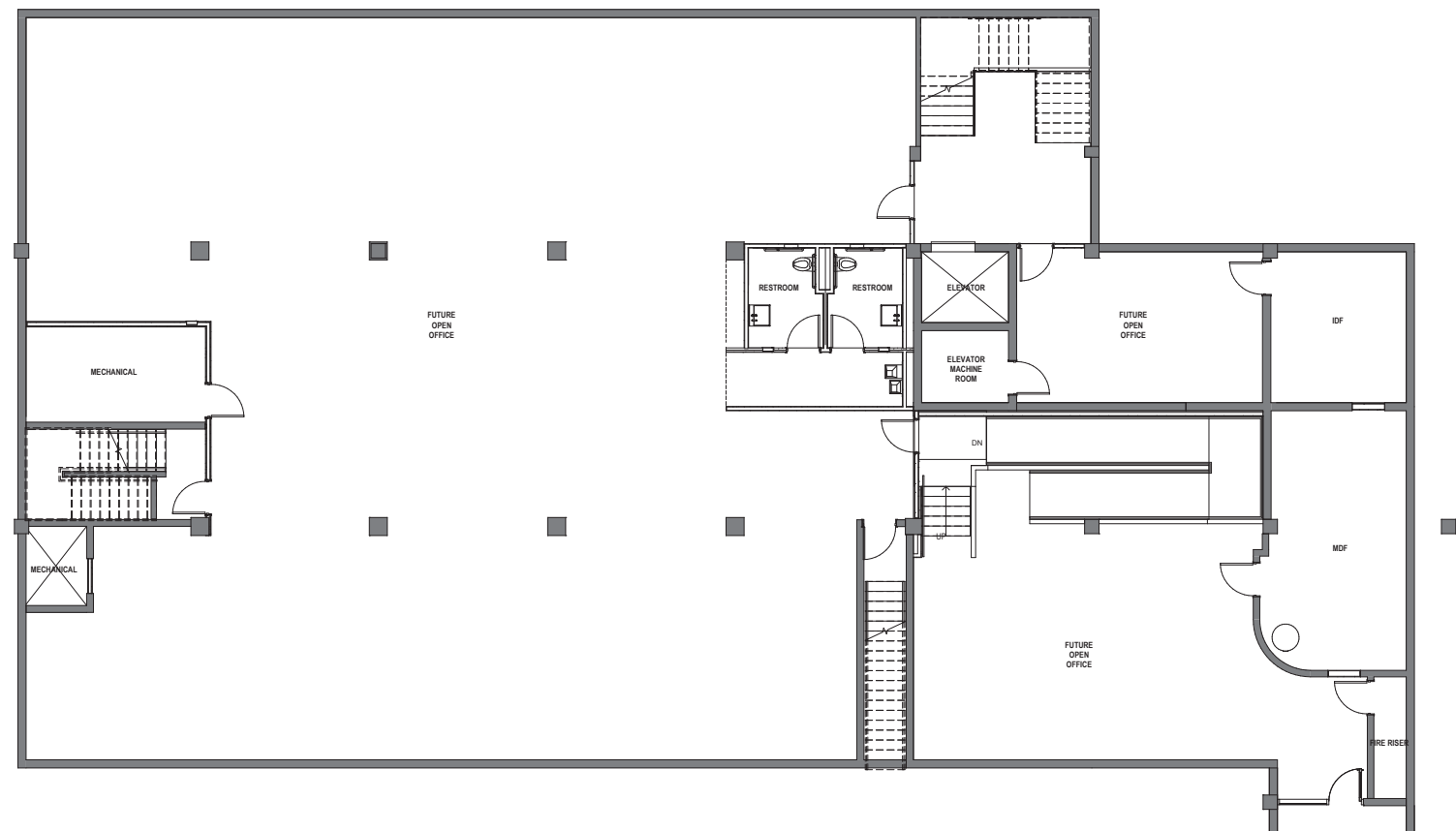
Thank you

NEW EXTERIOR CORE



LEVEL 2 FLOORPLAN

NEW EXTERIOR CORE



BASEMENT FLOORPLAN