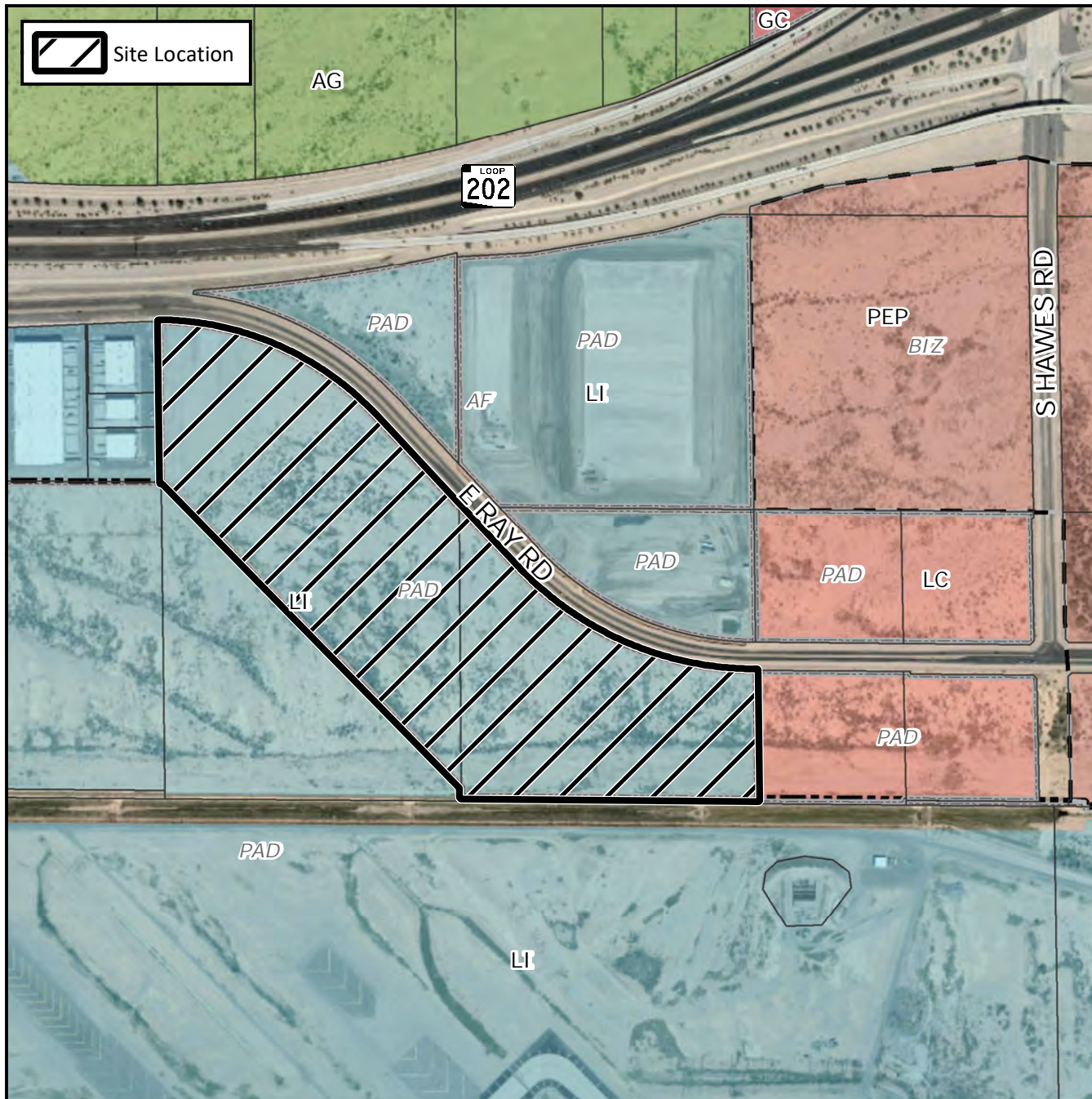


## Final Plat Vicinity Map



## Case Details

### Project:

The Landings Phase 3

### Site/Address:

District 6. Within the 7800 to 8300 blocks of East Ray Road (south side). Located west of Hawes Road on the south side of Ray Road. (58.9± acres)

### Description:

Marwest Enterprises, LLC, Ray 39A, LLLP, Santan 74, LLLP, Ray 39C, LLLP, Developer. James A. Brucci, Hunter Engineering, Inc., Surveyor.

