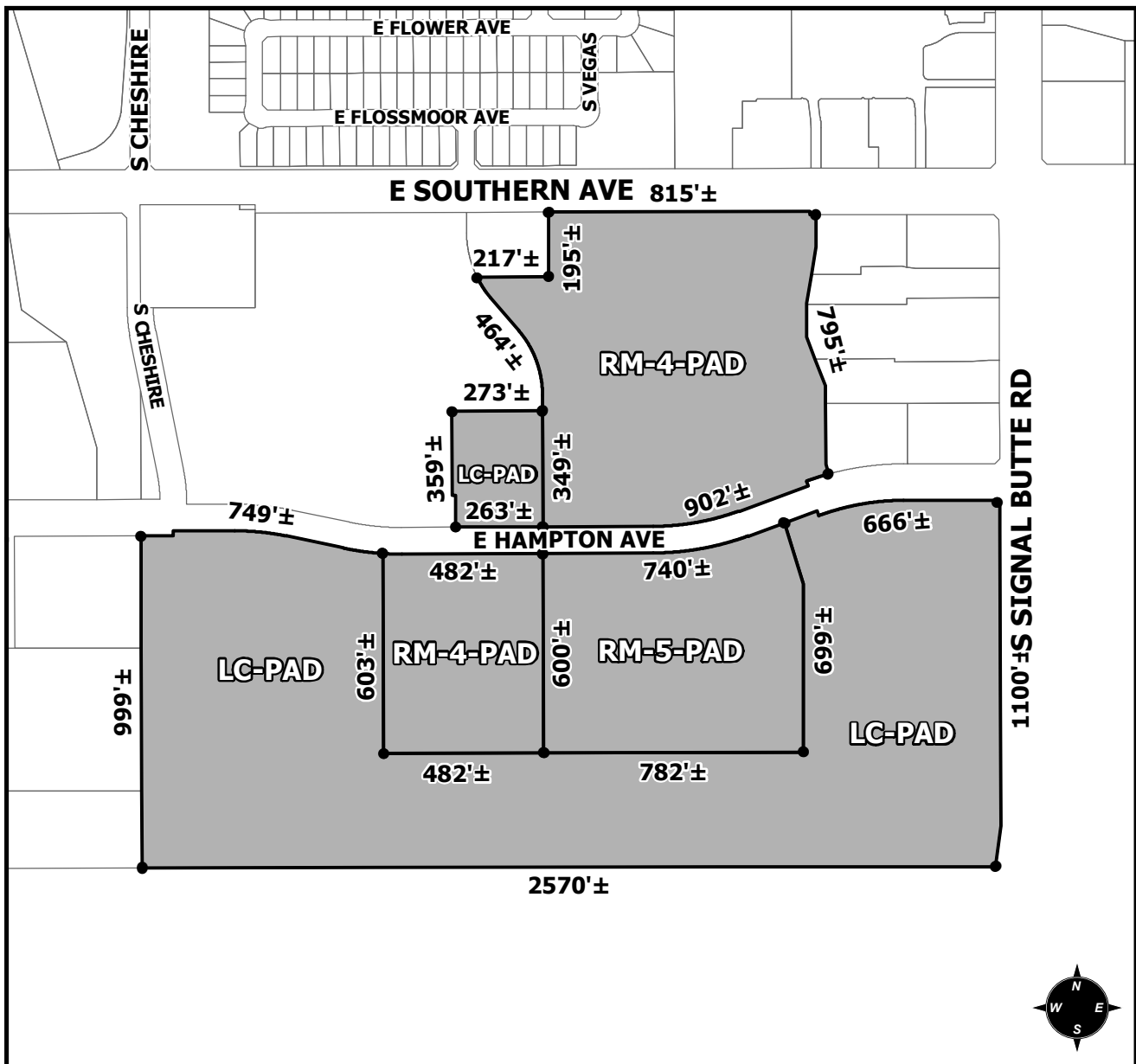




OFFICIAL SUPPLEMENTARY ZONING MAP AMENDING THE CITY OF MESA ZONING MAP



CASE: ZON19-00872

ACREAGE: 81.4±

REQUEST: REZONE FROM LC-PAD AND LC-PAD-BIZ TO LC-PAD, RM-4-PAD AND RM-5-PAD

ORDINANCE: _____

Please be advised that the attached zoning changes were approved by the Mesa City Council on _____, 2020 by Ordinance # _____. If you have any questions concerning these changes, contact the City of Mesa Planning Division at 480-644-2385.

ATTEST: _____ DATE: _____

MAYOR

CITY CLERK