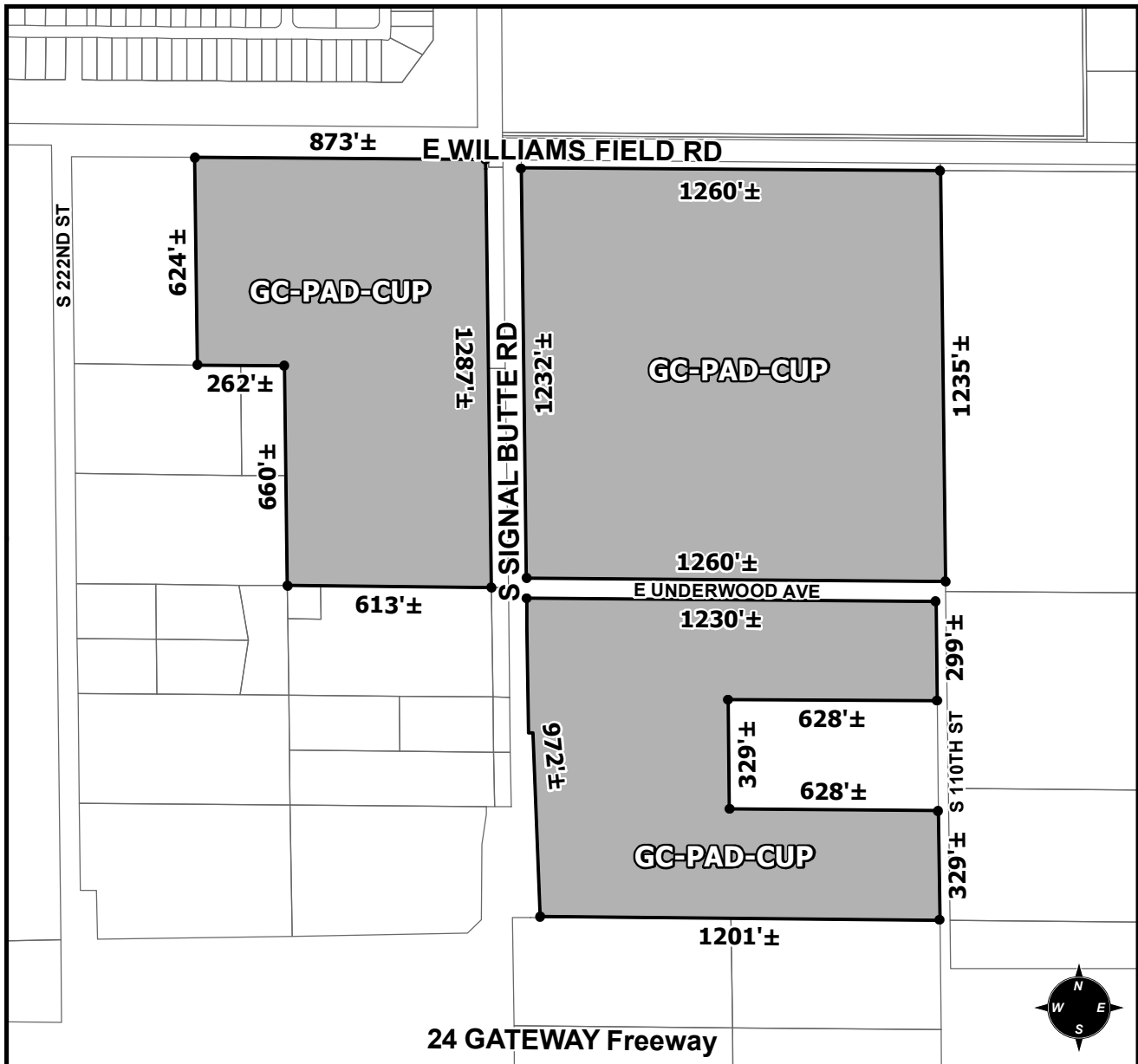




# OFFICIAL SUPPLEMENTARY ZONING MAP AMENDING THE CITY OF MESA ZONING MAP



CASE: ZON19-00805

ACREAGE: 89±

REQUEST: REZONE FROM RS-9-PAD, RS-6-PAD, RSL-2.5-PAD, RM-2-PAD AND LC-PAD TO GC-PAD; A COUNCIL USE PERMIT TO ALLOW 100% RESIDENTIAL USES ON THE FIRST FLOOR WITHIN A GENERAL COMMERCIAL ZONING DISTRICT; AND MODIFICATION OF THE DESTINATION AT GATEWAY PAD TO REMOVE 89± ACRES.

ORDINANCE: \_\_\_\_\_

Please be advised that the attached zoning changes were approved by the Mesa City Council on \_\_\_\_\_, 2020 by Ordinance # \_\_\_\_\_. If you have any questions concerning these changes, contact the City of Mesa Planning Division at 480-644-2385.

ATTEST: \_\_\_\_\_ DATE: \_\_\_\_\_

MAYOR

CITY CLERK