

RESOLUTION NO. _____

**A RESOLUTION OF THE CITY COUNCIL OF THE CITY OF
MESA, MARICOPA COUNTY, ARIZONA, EXTINGUISHING
A PUBLIC UTILITIES AND FACILITIES EASEMENT
RECORDED IN DOCUMENT NO. 2012-0629801, LOCATED
ON THE SOUTHWEST CORNER OF SOUTH POMEROY
AND EAST MAIN STREET.**

WHEREAS, the City Council has determined that a Public Utilities and Facilities Easement dedicated on July 18, 2012, in Document No. 2012-0629801, records of Maricopa County, Arizona, located on the Southwest corner of South Pomeroy and East Main Street on APN:138-65-006H, as hereinafter described ("Public Utilities and Facilities Easement"), is no longer needed.

NOW THEREFORE, BE IT RESOLVED BY THE CITY COUNCIL OF THE CITY OF
MESA, MARICOPA COUNTY, ARIZONA, AS FOLLOWS:

Section 1: All rights of the City of Mesa in and to the following described portion of the Public Utilities and Facilities Easement, as more fully described and depicted in **Exhibit A**, are extinguished:

That portion of the Southeast Quarter of Section 22, T1N, R5E, Gila and Salt River Base and Meridian, Maricopa County, Arizona, more particularly described as follows:

PLEASE REFER TO THE LEGAL DESCRIPTION AND
DEPICTION ON **EXHIBIT "A"** ATTACHED HERETO
AND MADE A PART HEREOF.

PASSED AND ADOPTED by the City Council of the City of Mesa, Maricopa County, Arizona,
this 1st day of June, 2020.

APPROVED:

Mayor

ATTEST:

City Clerk

EXHIBIT "A"
A PUBLIC UTILITIES & FACILITIES EASEMENT
ALONG THE EAST EDGE OF A SURFACE PARKING LOT
AT THE SOUTHWEST CORNER OF E. MAIN STREET & S. POMEROY

THAT PORTION OF THE SOUTHEAST QUARTER OF SECTION 22, T1N, R5E, G&SRB&M, MARICOPA COUNTY, ARIZONA, MORE PARTICULARLY DESCRIBED BY THIS 'EXHIBIT A' ATTACHED:

COMMENCING AT A 3 INCH ARIZONA HIGHWAY DEPARTMENT BRASS CAP IN A HAND HOLE, FROM WHICH, ACCORDING TO BOOK 23 OF MAPS PAGE 18 RECORDS OF MARICOPA COUNTY ARIZONA, A 3 INCH ARIZONA HIGHWAY DEPARTMENT BRASS CAP IN A HAND HOLD, MONUMENTING THE EAST QUARTER (1/4) CORNER OF SAID SECTION 22, BEARS SOUTH 89° 44' 46" EAST, A DISTANCE OF 240.96 FEET (240.78 FEET RECORD); AND ALSO FROM WHICH, ACCORDING TO SAID BOOK AND SAID PAGE, A 3 INCH CITY OF MESA BRASS CAP IN A HAND HOLE, MONUMENTING THE INTERSECTION OF HIBBERT STREET WITH EAST MAIN STREET, BEARS NORTH 89° 46' 48" WEST (BASIS OF BEARING), A DISTANCE OF 778.73 FEET (778.67 FEET RECORD);

THENCE NORTH 89° 46' 48" WEST, A DISTANCE OF 290.21 FEET, TO A POINT ON THE EAST-WEST MIDSECTION LINE OF SAID SECTION 22;

THENCE SOUTH 00° 13' 12" WEST, A DISTANCE OF 74.00 FEET, TO THE NORTH LINE OF BLOCK 35, ACCORDING TO SAID BOOK 23 AND SAID PAGE 18, AND THE 24.50 FOOT WEST RIGHT OF WAY OF SOUTH POMEROY STREET;

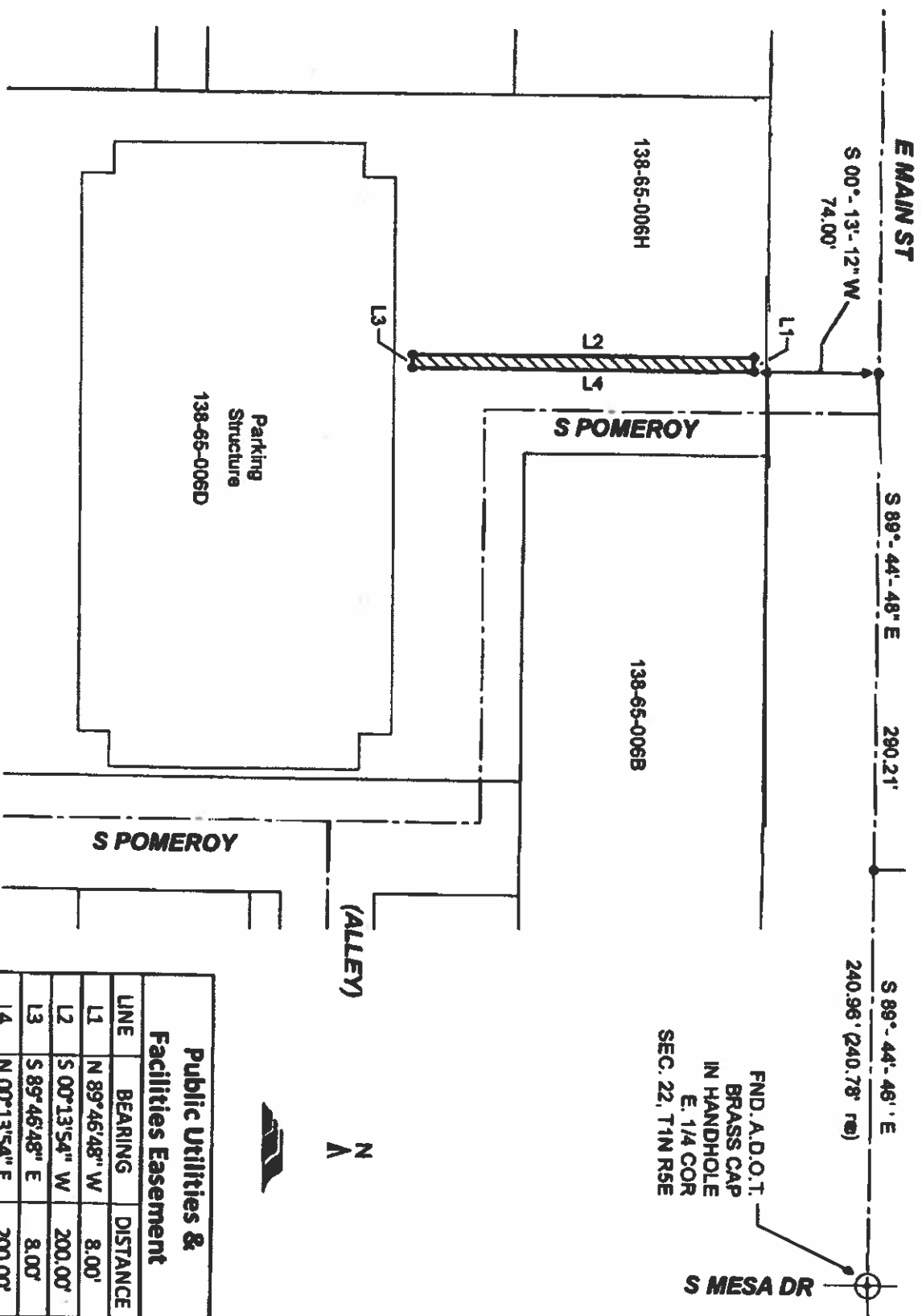
THENCE NORTH 89° 46' 48" WEST, 8.00 FEET SOUTH OF AND PARALLEL TO THE NORTH LINE OF SAID BLOCK 35, A DISTANCE OF 8.00;

THENCE SOUTH 00° 13' 54" WEST, 8.00 FEET WEST OF AND PARALLEL TO THE WEST RIGHT OF WAY LINE OF SOUTH POMEROY STREET, A DISTANCE OF 200.00 FEET;

THENCE SOUTH 89° 46' 48" EAST, PARALLEL TO AND 208.00 FEET SOUTH OF THE NORTH LINE OF SAID BLOCK 35, A DISTANCE OF 8.00 FEET;

THENCE, NORTH 00° 13' 54" EAST, ALONG SAID 24.50 FOOT WEST RIGHT OF WAY LINE OF SOUTH POMEROY STREET, A DISTANCE OF 200.00 FEET TO THE POINT OF BEGINNING;

CONTAINING AN AREA OF 1600.0 SQUARE FEET OR 0.04 ACRES, MORE OR LESS.



Public Utilities & Facilities Easement		
LINE	BEARING	DISTANCE
L1	N 89°46'48" W	8.00'
L2	S 00°13'54" W	200.00'
L3	S 89°46'48" E	8.00'
L4	N 00°13'54" E	200.00'