

MATERIAL LEGEND

- (STO) STO - SYNTHETIC SYSTEM WITH STO FINE SAND FINISH
- (SF) 2x8x16 CMU VENEER, SPLIT FACE - SUPERLITE, MORTAR COLOR TO MATCH CMU
- (CAN) METAL CANOPY WITH CLEVIS AND TURNBUCKLE SUPPORTS
- (PAR) PARAPET POPOUT Moulding WITH PREFINISHED METAL CAP FLASHING
- (MUR) WALL MURAL
- (SILL) CMU SILL BLOCK

COLOR LEGEND

- 1 'CLASSIC CREAM' T/M - STO FINE SAND FINISH
- 2 'BAMBOO' T/M - STO FINE SAND FINISH
- 3 'CUSTOM CASH' T/M - STO FINE SAND FINISH
- 4 METAL PAINT - KYNAR 500 [O.E.] STEEL PAINT, COLOR 'DARK BRONZE' - MATTE FINISH
- 5 PAINT TO MATCH - MUTUAL MATERIALS - BRICK - 'INCA-MISSION'

SEALANTS TO MATCH ADJACENT MATERIAL COLORS, WHITE OR OFF WHITE SEALANTS ARE NOT ALLOWED

PAINTER SHALL PROVIDE (2) COATS OF SEALER TO ALL NATURAL BLOCK, PRECAST CONCRETE ITEMS, CONCRETE AND NON-PAINTED SURFACES AND MATERIALS FOR A WEATHER SEALED PROJECT

PAINTER SHALL PROVIDE CMU, BLOCK, CONCRETE AND OTHER MATERIALS WITH FINISH, PAINT COLOR FOR REVIEW AND APPROVAL PRIOR TO APPLICATION - ANY PAINT FINISHES TO BE APPLIED TO THE ACTUAL BUILDING SHALL BE APPROVED PRIOR BY CONTRACTOR/ARCHITECT FOR LOCATION AND SIZE PRIOR TO APPLICATION

STOREFRONT | GLAZING SPECIFICATION

ALUMINUM STOREFRONT SYSTEM:

ARCADIA AFG451 2" X 4 1/2", CENTER GLAZED NON-THERMAL STOREFRONT

- DARK BRONZE FINISH
- 1" OVERALL GLAZING - SEE GLAZING BELOW

1" INSULATED GLAZING

- OUTBOARD: 1/4" PPG SOLARBAN R100 ON CLEAR #2
- AIR SPACE: 1/2" SPACER, AIR FILLED
- INBOARD: 1/4" CLEAR
- U-FACTOR - 0.0.29, SHGC = 0.23

PLAN NOTES

SEE STRUCTURAL PLANS FOR LINTELS/INFORMATION

SEE STRUCTURAL DRAWINGS FOR CONTROL JOINT LOCATIONS - WHERE CONTROL JOINTS OCCUR BENEATH WALL FINISH SYSTEMS, THE CONTROL JOINT AND WALL FINISH SHALL BE CARRIED THRU - PROVIDE MANUFACTURE APPROVED CONTROL JOINT TRIM, JOINTS AS APPLICABLE PER WALL FINISH

SEE FLOOR PLAN AND SCHEDULES FOR DOOR HEIGHTS, IN CMU WALLS CONFIRM FRAMES 'COURSE' WITH MODULAR CMU HEIGHTS

ALL CMU LINTELS ARE TO BE LINTEL BLOCKS, NO 2 CORE OR HOLLOW CMU ALLOWED

ALL ROOF DRAIN LEADERS ARE TO BE BRASS 'LAMBS' TONGUE, COMPLETE WITH TRIM RING - NO PVC ALLOWED

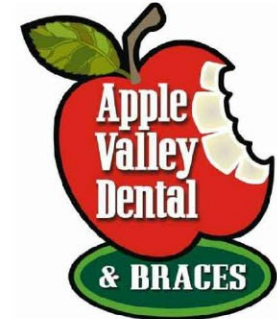
PRIOR TO PROCURING MATERIALS, CONTRACTOR SHALL PROVIDE SAMPLES OF ALL MATERIALS, COLORS FOR REVIEW AND APPROVAL BY ARCHITECT AND OWNER

ALL SAMPLES SHALL BE SUBMITTED FOR REVIEW AS A COMPLETE SUBMITAL, AT ONE TIME. MATERIAL SAMPLES SHALL BE LARGE ENOUGH TO DEPICT THE FINISH, TEXTURE OF 12" SQUARE OR AS APPROPRIATE

the architectural design, conception and data presented herein represents an instrument of service provided in connection with the design build agreement for the exclusive use of FINN architects, llc. any other use or release or these drawings may result in civil damages.

this plan/site plan has been prepared without the benefit of a survey, depictions may not be accurate or fully reflect all dimensions, data, etc, which may affect the design and usability of this site. all design shown here is strictly conceptual.

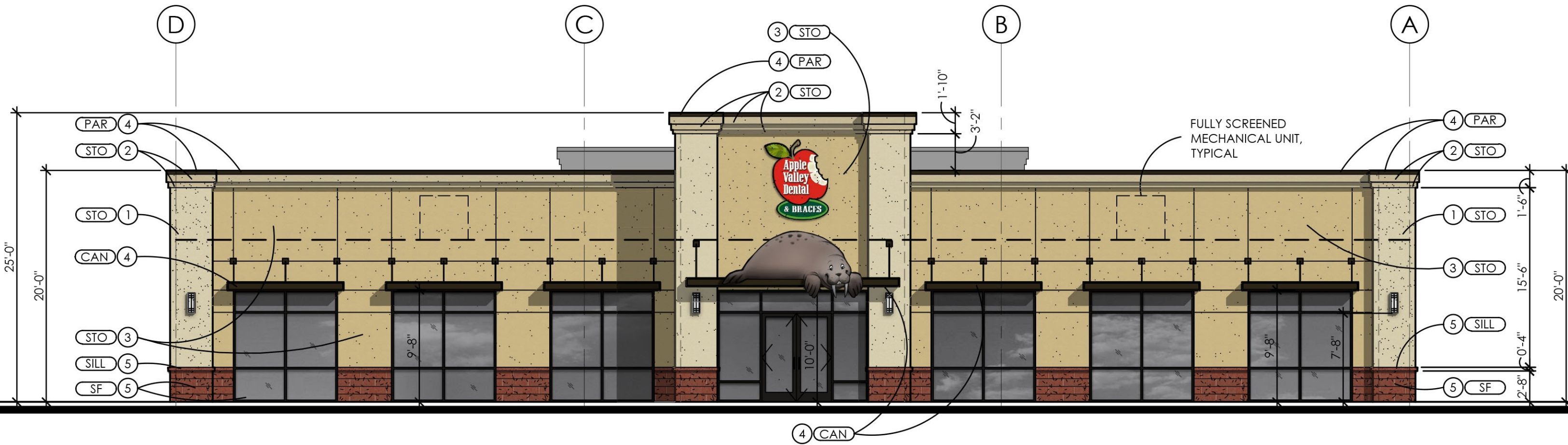
august 27, 2019
city pre-application
february 06, 2020
schematic design
february 11, 2020
site | drb application
march 09, 2020
site | drb revisions
march 23, 2020
pz | site resubmittal



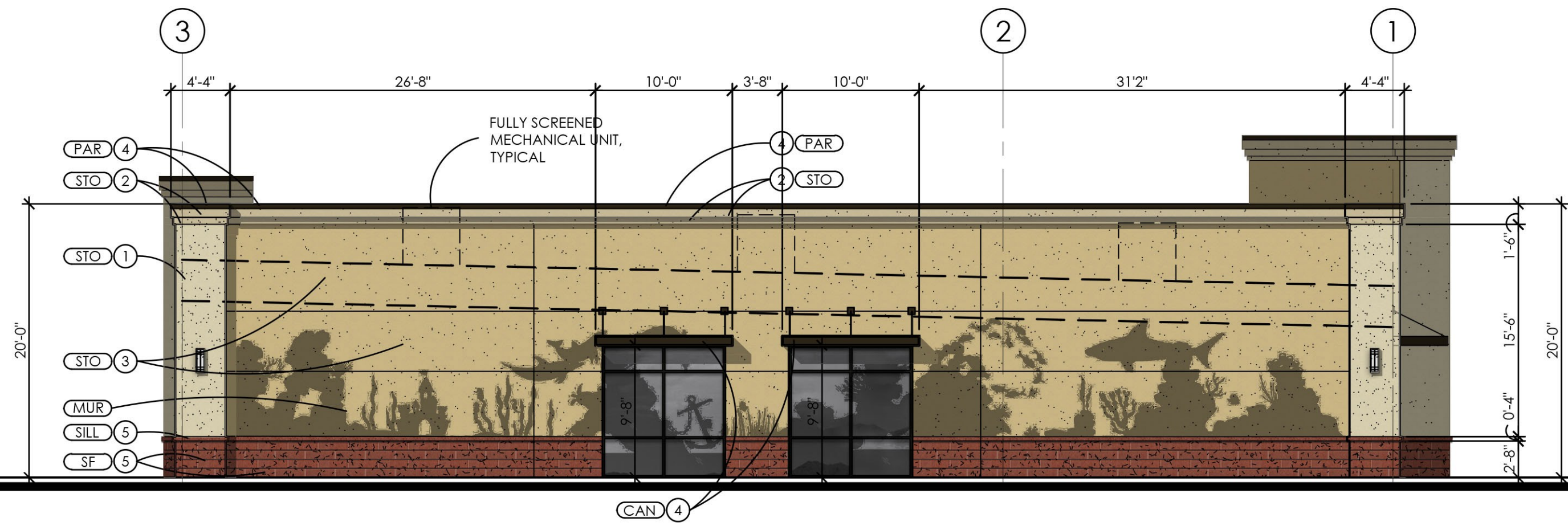
apple valley dental & braces

5215 east southern avenue
mesa, arizona

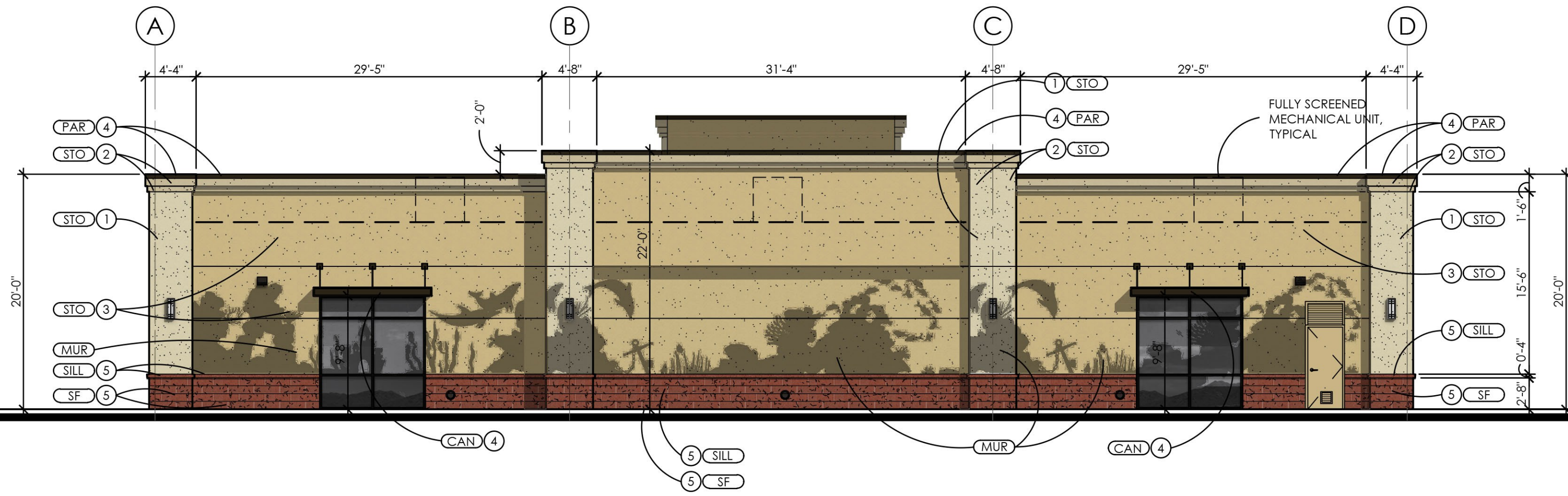
• PRS19-00667 | TON20-00102



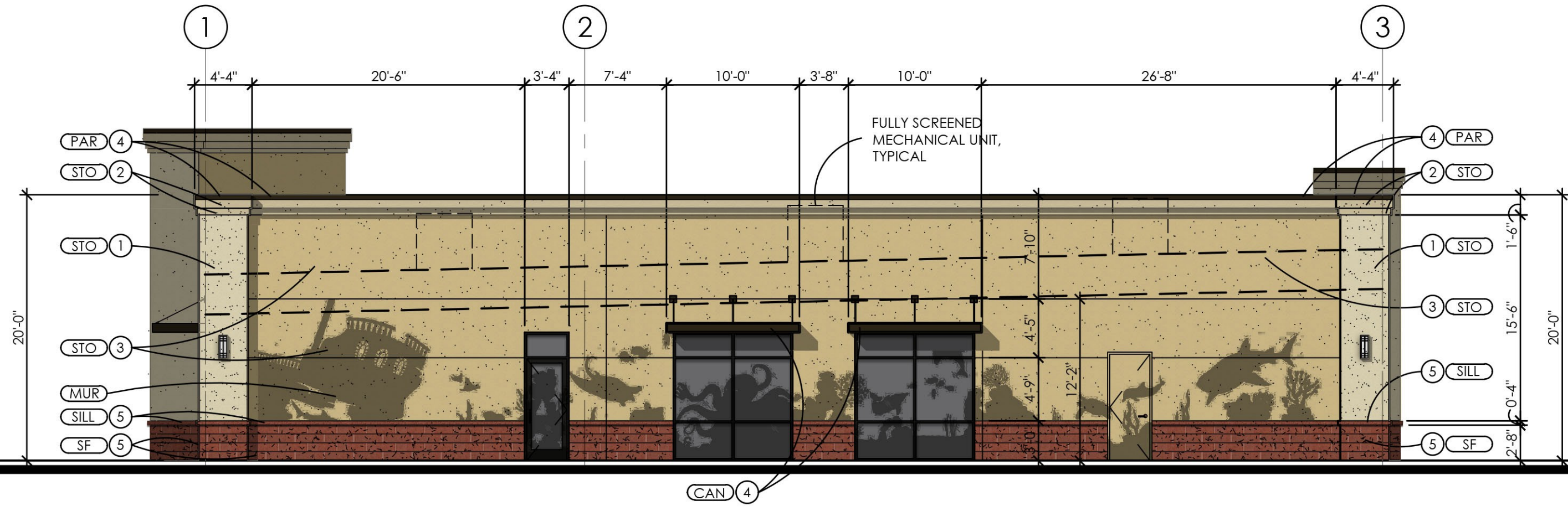
north elevation



east elevation



south elevation



west elevation

exterior elevations

scale: 1/8"=1'-0"