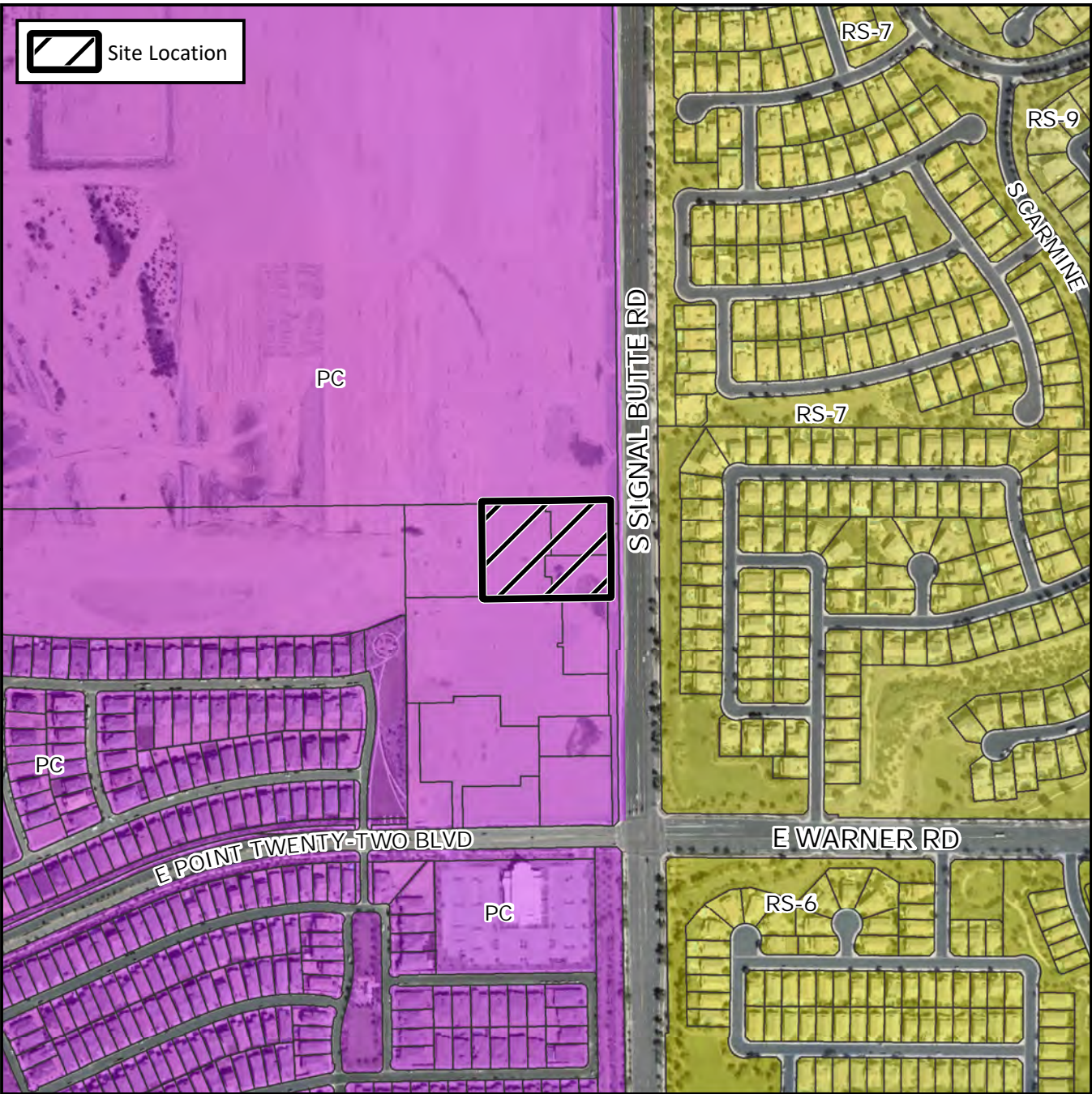


## Final Plat Vicinity Map



### Case Details

**Project:**  
The Point II

© 2006 The Authors  
Journal compilation © 2006 Blackwell Publishing Ltd

**Site/Address:**  
(District 6). Located within the 4200 block of South Signal Butte Road (west side). Located north of Point Twenty-Two Blvd. on the west side of Signal Butte Road. (±2.7 acres).

**Description:**  
Evergreen – Point 22 & Signal Butte, LLC,  
Developer. Eric L. Sostrom, Survey Innovation  
Group Inc., Surveyor.

**Description:**  
Evergreen – Point 22 & Signal Butte, LLC,  
Developer. Eric L. Sostrom, Survey Innovation  
Group Inc., Surveyor.

