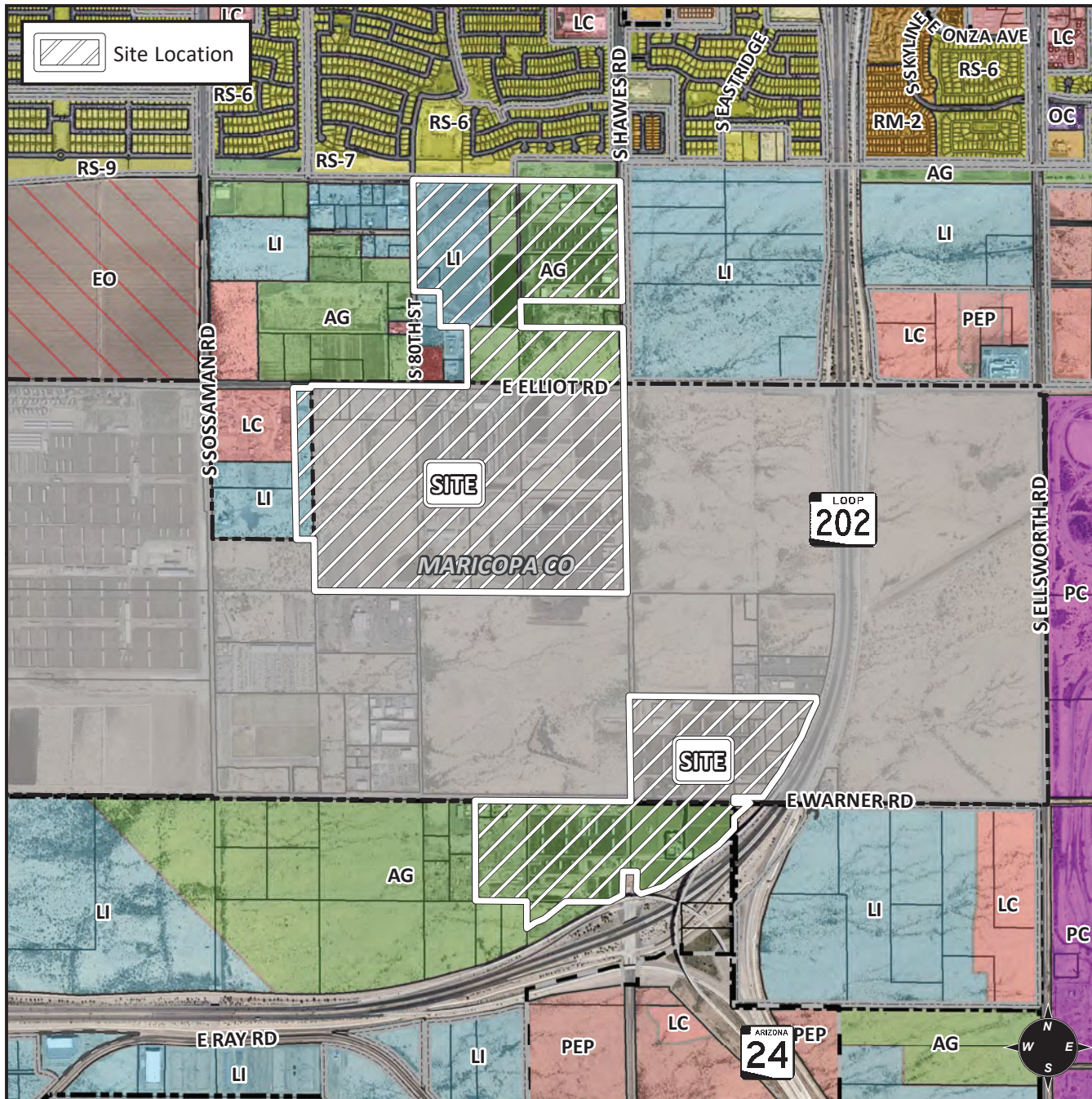


# Planning and Zoning Vicinity Map: ZON17-00606



## Case Details

### CASE:

ZON17-00606

PRE-PLAT : ☐

### SITE / ADDRESS:

District 6. Within the 3200 through 4000 blocks of South Hawes Road (west side), the 3200 through 3600 blocks of South 80th Street (east side), the 3600 through 4000 blocks of the South 80th Street alignment (east and west sides), the 7700 through 8400 blocks East Elliot Road (south side), the 8100 through 8400 blocks of East Elliot Road (north side), the 8400 through 8800 blocks of East Warner Road (north side), and the 8100 through 8600 blocks of East Warner Road (south side). (540± acres)

### REQUEST:

Rezone from AG and LI to RS-6, RSL-4.0, RSL-2.5, RM-5, GC, and MX with a PAD Overlay. This request will establish the 'Hawes Crossing' PAD to guide the future review of specific plans of development.

