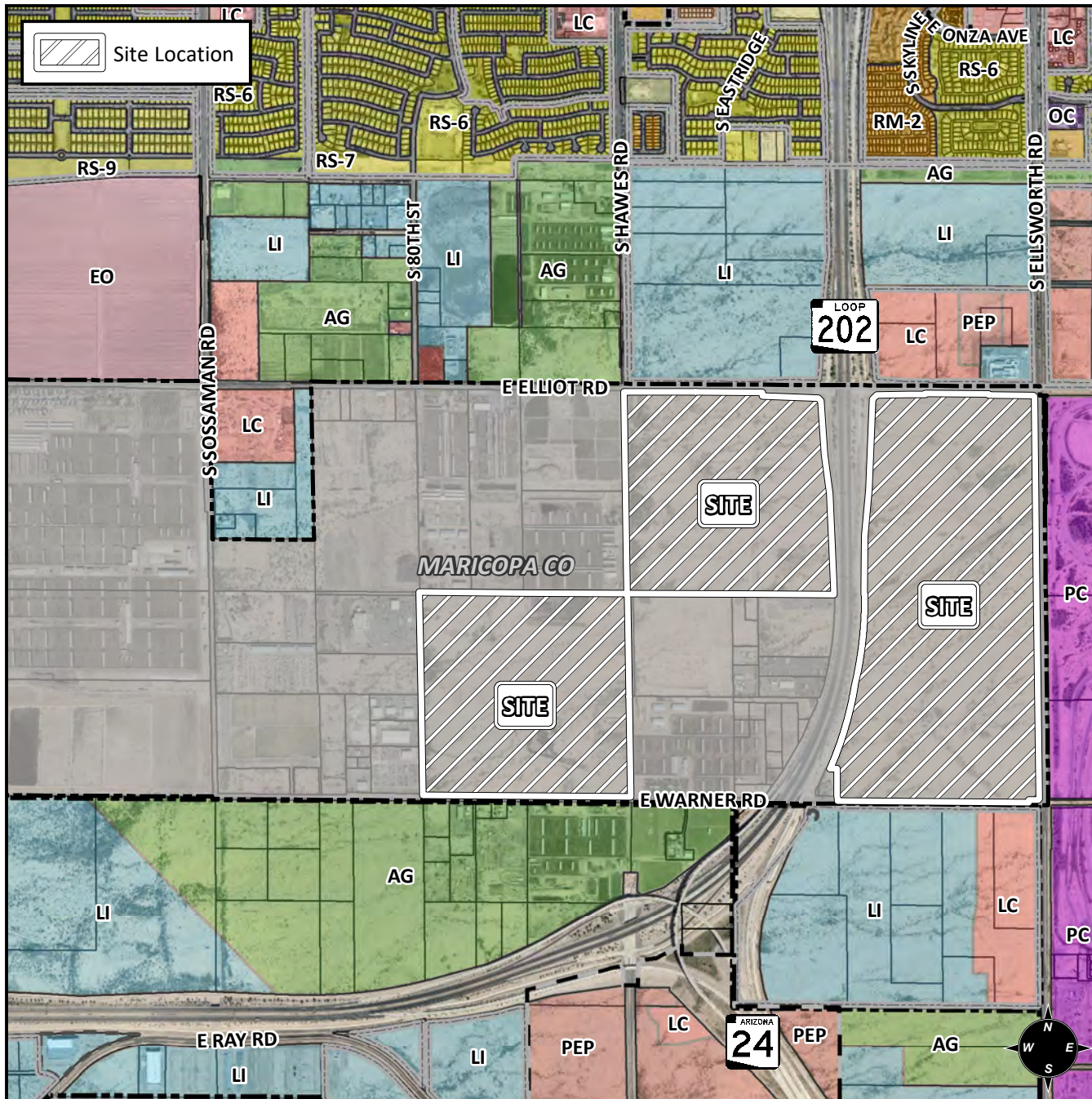


# Planning and Zoning Vicinity Map: ZON17-00607



## Case Details

**CASE:**

ZON17-00607

**PRE-PLAT :** ☐

### SITE / ADDRESS:

District 6. Within the 8000 through 8400 blocks of East Warner Road (north side), the 4000 through 4400 blocks of the South Hawes Road alignment (west side), the 8400 through 8800 blocks of East Elliot Road (south side), the 3600 through 4000 blocks of the South Hawes Road alignment (east side), the 8800 through 9200 blocks of East Elliot Road (south side), the 8800 through 9200 blocks of East Warner Road (north side), and the 3600 through 4400 blocks of South Ellsworth Road (west side). (595± acres)

### REQUEST:

Rezone from AG to RSL-4.0, RSL-2.5, RM-5, OC, LC, GC, LI, and MX with a PAD Overlay. This request will establish the 'Hawes Crossing' PAD to guide the future review of specific plans of development.

