

**EXHIBIT A**  
**PUBLIC UTILITY AND FACILITY EASEMENT ABANDONMENT**  
**LEGAL DESCRIPTION**

A PORTION OF THE PUBLIC UTILITY AND FACILITY EASEMENTS OF EASEMENT "A", AND ALL OF EASEMENTS "F", "G", "H" & "I", RECORDED IN DOC. 2005-686365, M.C.R., LOCATED IN THE NORTHEAST QUARTER OF SECTION 34, TOWNSHIP 1 NORTH, RANGE 7 EAST, OF THE GILA & SALT RIVER MERIDIAN, MARICOPA COUNTY, ARIZONA, MORE PARTICULARLY DESCRIBED AS FOLLOWS:

**COMMENCING** AT THE DESCRIBED POINT "D", OF EASEMENT "A", OF THE PUBLIC UTILITY AND FACILITY EASEMENT, OF SAID DOCUMENT;

THENCE SOUTH 89 DEGREES 58 MINUTES 56 SECONDS WEST ALONG THE CENTERLINE OF SAID PUBLIC UTILITY AND FACILITIES EASEMENT, 42.31 FEET TO THE **POINT OF BEGINNING**;

THENCE SOUTH 00 DEGREES 01 MINUTES 04 SECONDS EAST, 42.00 FEET;

THENCE SOUTH 89 DEGREES 58 MINUTES 56 SECONDS WEST, 12.00 FEET;

THENCE NORTH 00 DEGREES 01 MINUTES 04 SECONDS WEST, 32.00 FEET;

THENCE SOUTH 89 DEGREES 58 MINUTES 56 SECONDS WEST, 88.63 FEET;

THENCE NORTH 45 DEGREES 01 MINUTES 04 SECONDS WEST, 43.51 FEET;

THENCE SOUTH 44 DEGREES 58 MINUTES 56 SECONDS WEST, 45.08 FEET;

THENCE SOUTH 45 DEGREES 01 MINUTES 04 SECONDS EAST, 35.00 FEET;

THENCE SOUTH 44 DEGREES 58 MINUTES 56 SECONDS WEST, 12.00 FEET;

THENCE NORTH 45 DEGREES 01 MINUTES 04 SECONDS WEST, 35.00 FEET;

THENCE SOUTH 44 DEGREES 58 MINUTES 56 SECONDS WEST, 196.63 FEET;

THENCE SOUTH 00 DEGREES 01 MINUTES 04 SECONDS EAST, 48.80 FEET;

THENCE NORTH 89 DEGREES 58 MINUTES 56 SECONDS EAST, 34.00 FEET;

THENCE SOUTH 00 DEGREES 00 MINUTES 00 SECONDS EAST, 12.00 FEET;

THENCE SOUTH 89 DEGREES 58 MINUTES 56 SECONDS WEST, 34.00 FEET;

THENCE SOUTH 00 DEGREES 01 MINUTES 04 SECONDS EAST, 310.57 FEET;

THENCE SOUTH 89 DEGREES 58 MINUTES 56 SECONDS WEST, 20.00 FEET;

THENCE NORTH 00 DEGREES 01 MINUTES 04 SECONDS WEST, 250.95 FEET;

THENCE SOUTH 89 DEGREES 58 MINUTES 56 SECONDS WEST, 16.00 FEET;

CONTINUED ON SHEET 2;



**Westwood**

6909 East Greenway Parkway, Suite 250  
Scottsdale, AZ 85254

**Westwood Professional Services, Inc.**

PUBLIC UTILITY AND FACILITIES  
EASEMENT ABANDONMENT  
CHRIST CHURCH OF THE VALLEY  
MESA, ARIZONA

SHEET NUMBER:

1 OF 5

DATE: 05-08-2019  
PROJ: 0020562

N:\0020562.DWG\SURVEY\EXHIBITS\WORKING\0020562V-EXB-WATER ABANDONMENT.DWG

**EXHIBIT A**  
**WATER EASEMENT ABANDONMENT**  
**LEGAL DESCRIPTION**

CONTINUED FROM SHEET 1

THENCE NORTH 00 DEGREES 01 MINUTES 04 SECONDS WEST, 12.00 FEET;

THENCE NORTH 89 DEGREES 58 MINUTES 56 SECONDS EAST, 16.00 FEET;

THENCE NORTH 00 DEGREES 01 MINUTES 04 SECONDS WEST, 116.70 FEET;

THENCE NORTH 44 DEGREES 58 MINUTES 56 SECONDS EAST, 281.99 FEET;

THENCE SOUTH 45 DEGREES 01 MINUTES 04 SECONDS EAST, 55.23 FEET;

THENCE NORTH 89 DEGREES 58 MINUTES 56 SECONDS EAST, 92.35 FEET;

THENCE SOUTH 00 DEGREES 01 MINUTES 04 SECONDS EAST, 10.00 FEET TO THE **POINT OF BEGINNING**;



N:\0020562\00\DWG\SURVEY\EXHIBITS\WORKING\0020562V-EXB-WATER ABANDONMENT.DWG

**Westwood**

6909 East Greenway Parkway, Suite 250  
Scottsdale, AZ 85254

Westwood Professional Services, Inc.

PUBLIC UTILITY AND FACILITIES  
EASEMENT ABANDONMENT  
CHRIST CHURCH OF THE VALLEY  
MESA, ARIZONA

SHEET NUMBER:

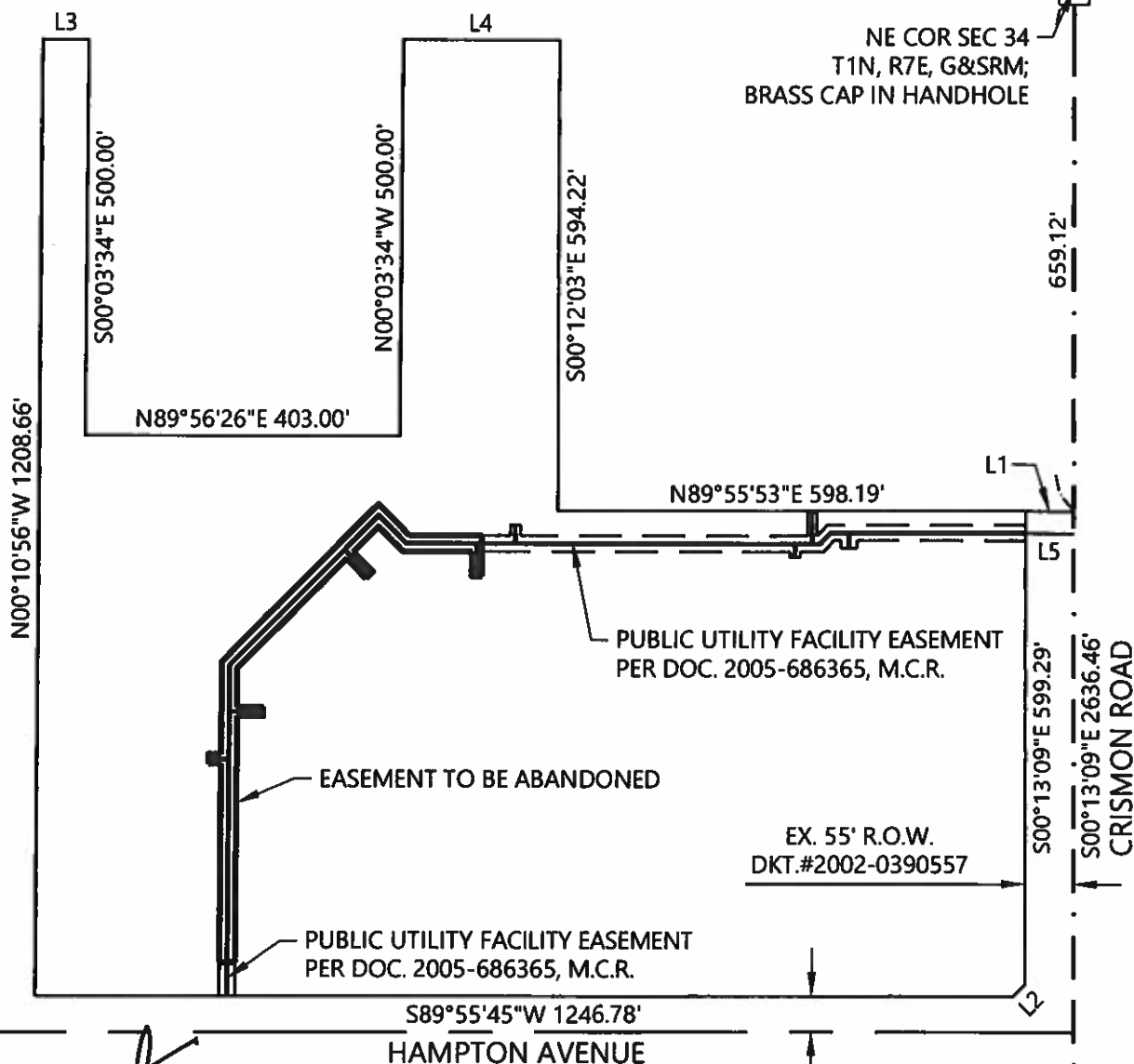
2 OF 5

DATE: 05-08-2019  
PROJ: 0020562

# EXHIBIT A

SOUTHERN AVENUE

S89°56'26"W 2651.91'



**Westwood**

6909 East Greenway Parkway, Suite 250  
Scottsdale, AZ 85254

Westwood Professional Services, Inc.

PUBLIC UTILITY AND FACILITIES  
EASEMENT ABANDONMENT  
CHRIST CHURCH OF THE VALLEY  
MESA, ARIZONA

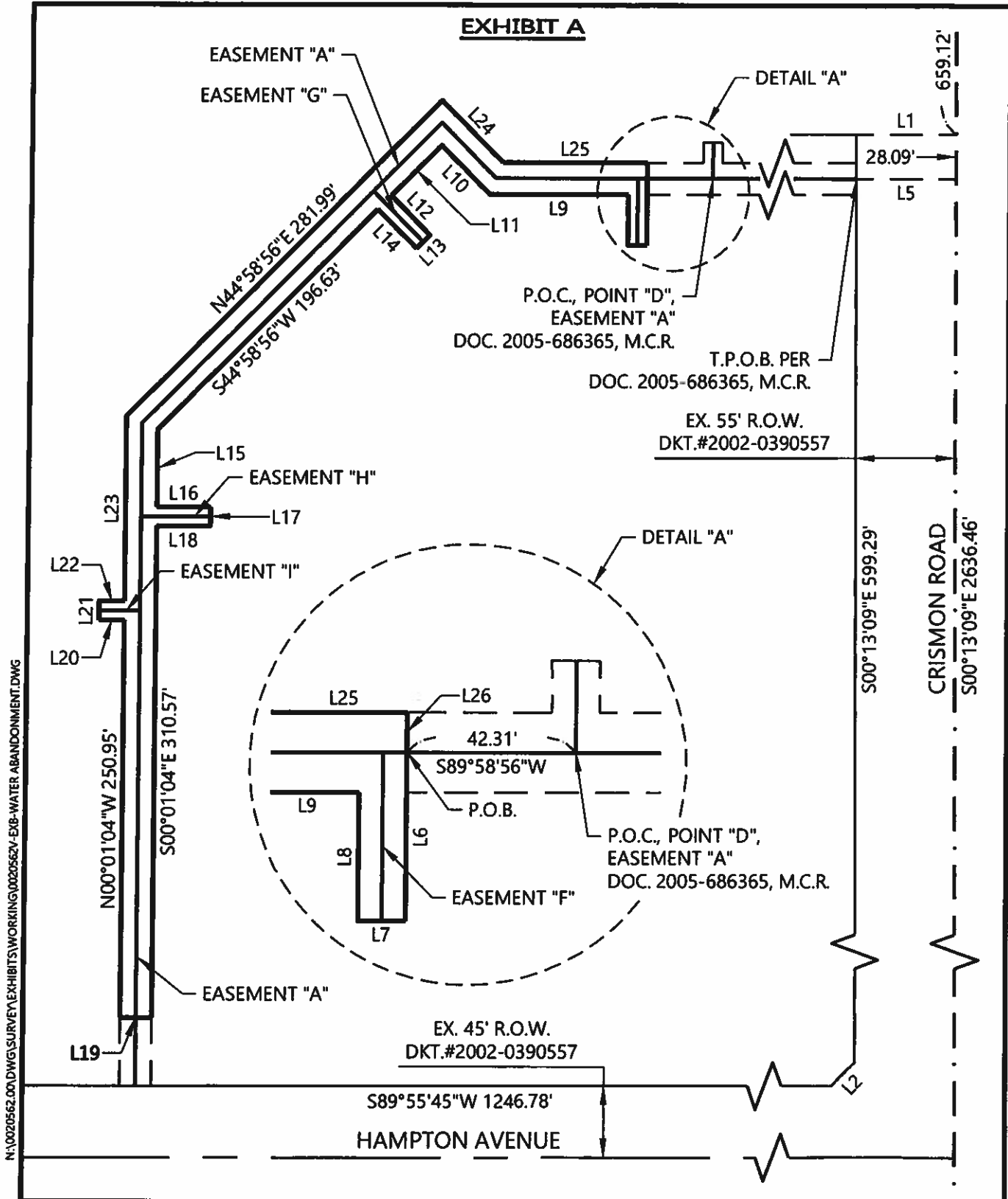
SHEET NUMBER:

3 OF 5

DATE: 05-08-2019  
PROJ: 0020562

N:\0020562\00\DWG\SURVEY\EXHIBITS\WORKING\0020562\EXB-WATER ABANDONMENT.DWG

**EXHIBIT A**



**Westwood**

6909 East Greenway Parkway, Suite 250  
Scottsdale, AZ 85254

Westwood Professional Services, Inc.

**PUBLIC UTILITY AND FACILITIES  
EASEMENT ABANDONMENT  
CHRIST CHURCH OF THE VALLEY  
MESA, ARIZONA**

SHEET NUMBER:

4 OF 5









DATE: 05-08-2019  
PROJ: 0020562

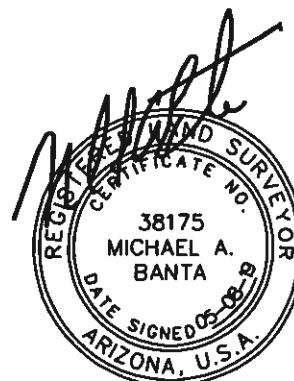
# EXHIBIT A

LINE TABLE		
LINE	DIRECTION	DISTANCE
L1	N89°55'53"E	65.00'
L2	S44°51'18"W	21.19'
L3	N89°56'26"E	59.82'
L4	N89°56'26"E	200.18'
L5	S89°58'56"W	65.00'
L6	S0°01'04"E	42.00'
L7	S89°58'56"W	12.00'
L8	N0°01'04"W	32.00'
L9	S89°58'56"W	88.63'
L10	N45°01'04"W	43.51'
L11	S44°58'56"W	45.08'
L12	S45°01'04"E	35.00'
L13	S44°58'56"W	12.00'

LINE TABLE		
LINE	DIRECTION	DISTANCE
L14	N45°01'04"W	35.00'
L15	S0°01'04"E	48.80'
L16	N89°58'56"E	34.00'
L17	S0°00'00"E	12.00'
L18	S89°58'56"W	34.00'
L19	S89°58'56"W	20.00'
L20	S89°58'56"W	16.00'
L21	N0°01'04"W	12.00'
L22	N89°58'56"E	16.00'
L23	N0°01'04"W	116.70'
L24	S45°01'04"E	55.23'
L25	N89°58'56"E	92.35'
L26	S0°01'04"E	10.00'

## LEGEND

	PROPERTY LINE
	ABANDONMENT AREA
	SECTION LINE
	EXISTING EASEMENT
	CENTER LINE
	P.O.C.
	P.O.B.
	R.O.W.
	POINT OF COMMENCING
	POINT OF BEGINNING
	RIGHT OF WAY



**Westwood**

6909 East Greenway Parkway, Suite 250  
Scottsdale, AZ 85254

Westwood Professional Services, Inc.

PUBLIC UTILITY AND FACILITIES  
EASEMENT ABANDONMENT  
CHRIST CHURCH OF THE VALLEY  
MESA, ARIZONA

SHEET NUMBER:

5 OF 5

DATE: 05-08-2019  
PROJ: 0020562