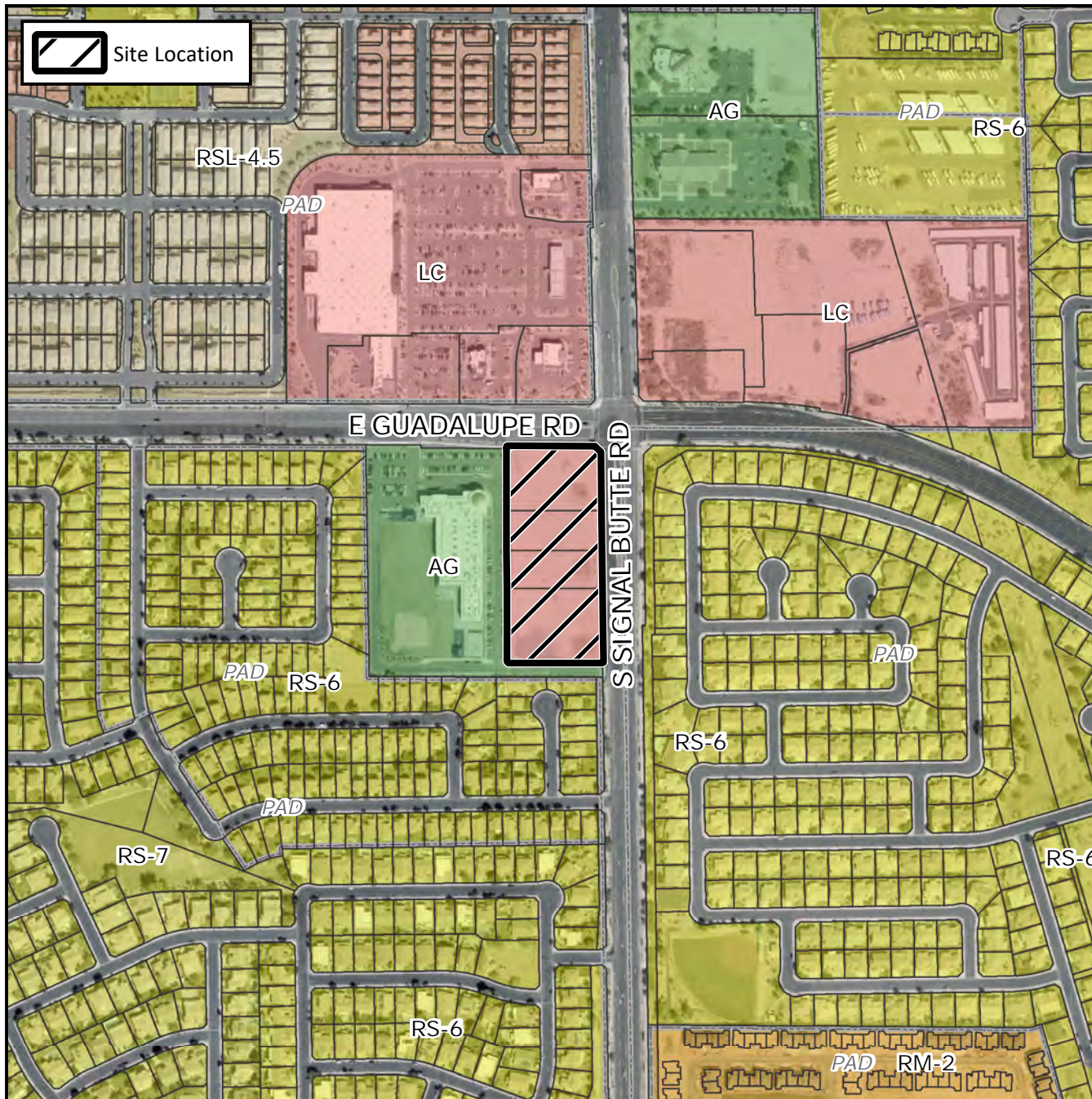


Final Plat Vicinity Map



Case Details

Project:

2836 S Signal Butte Road

Site/Address:

(District 6). Located within the 2800 block of South Signal Butte Road (west side) and within the 10700 block of East Guadalupe Road (south side). Located on the southwest corner of Guadalupe and Signal Butte Roads. (±4.8 acres)

Description:

GB-SB, LLC, Developer. David S. Klein, Superior Surveying, Inc., Surveyor.

