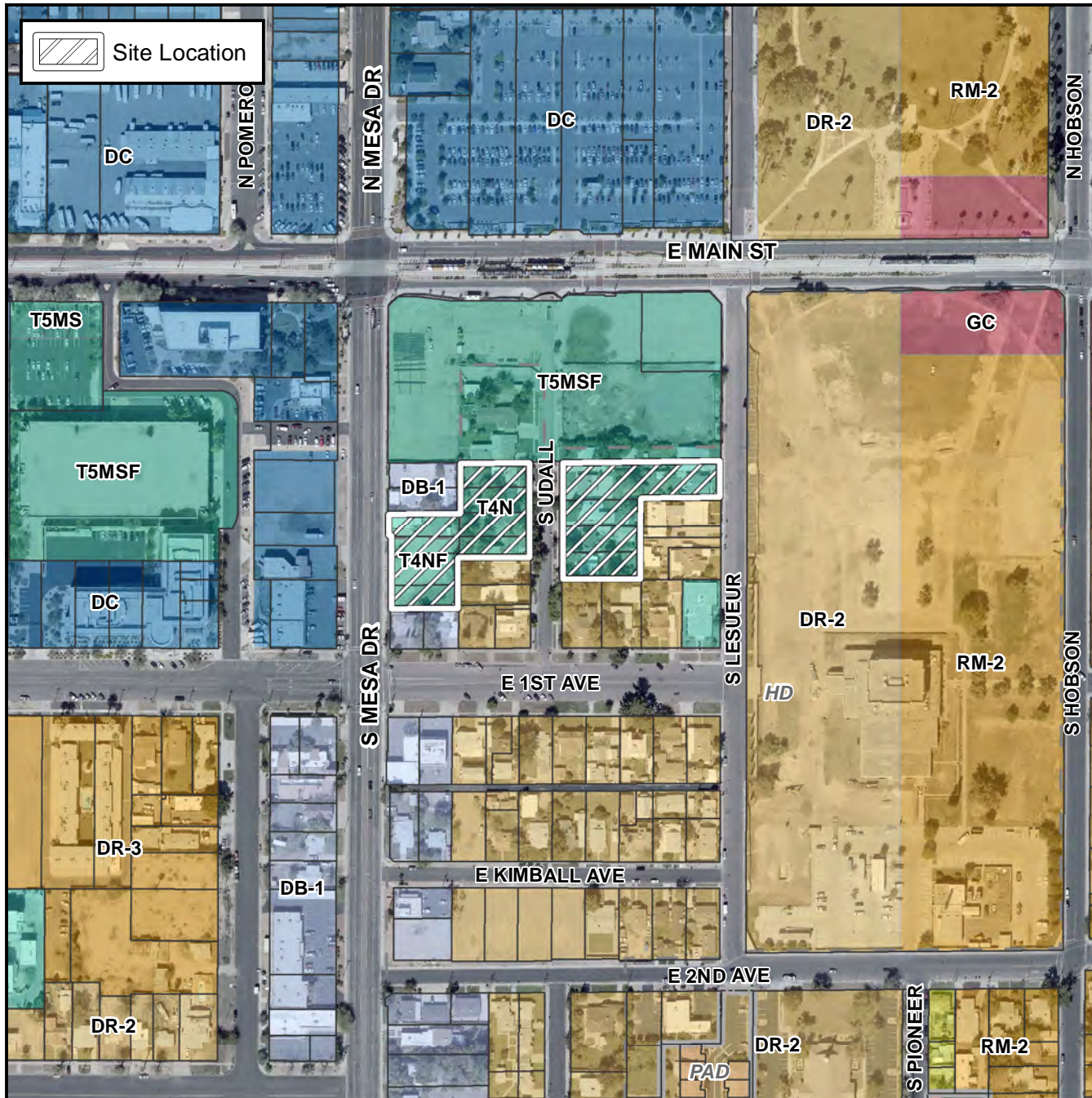


Preliminary Plat Vicinity Map



Case Details

Project:

Mesa and Main-Phase 2- East and West Blocks

Site / Address:

District 4. Within the 0 to 100 block of South Mesa Drive (east side), the 0 to 100 block of South Udall (east and west sides), and the 0 to 100 block of South Lesueur (west side). Located east of Mesa Drive and south of Main Street. (2.25± acres)
(ZON19-00625)

