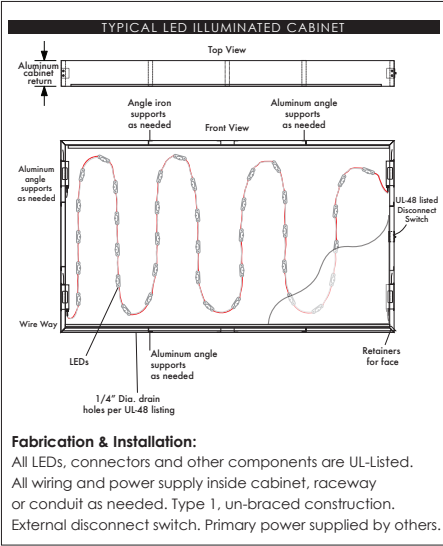


COLOR SCHEDULE:

- ① TRANSLUCENT WHITE VINYL 3M 3630 - 20
- ② MP TO MATCH MISTY SW 6232
- ③ MP TO MATCH CADET SW 9143
- ④ MP BLACK
- ⑤ MP TO MATCH DOWN POUR SW 6516 / PMS 2995C

SPECIFICATIONS:

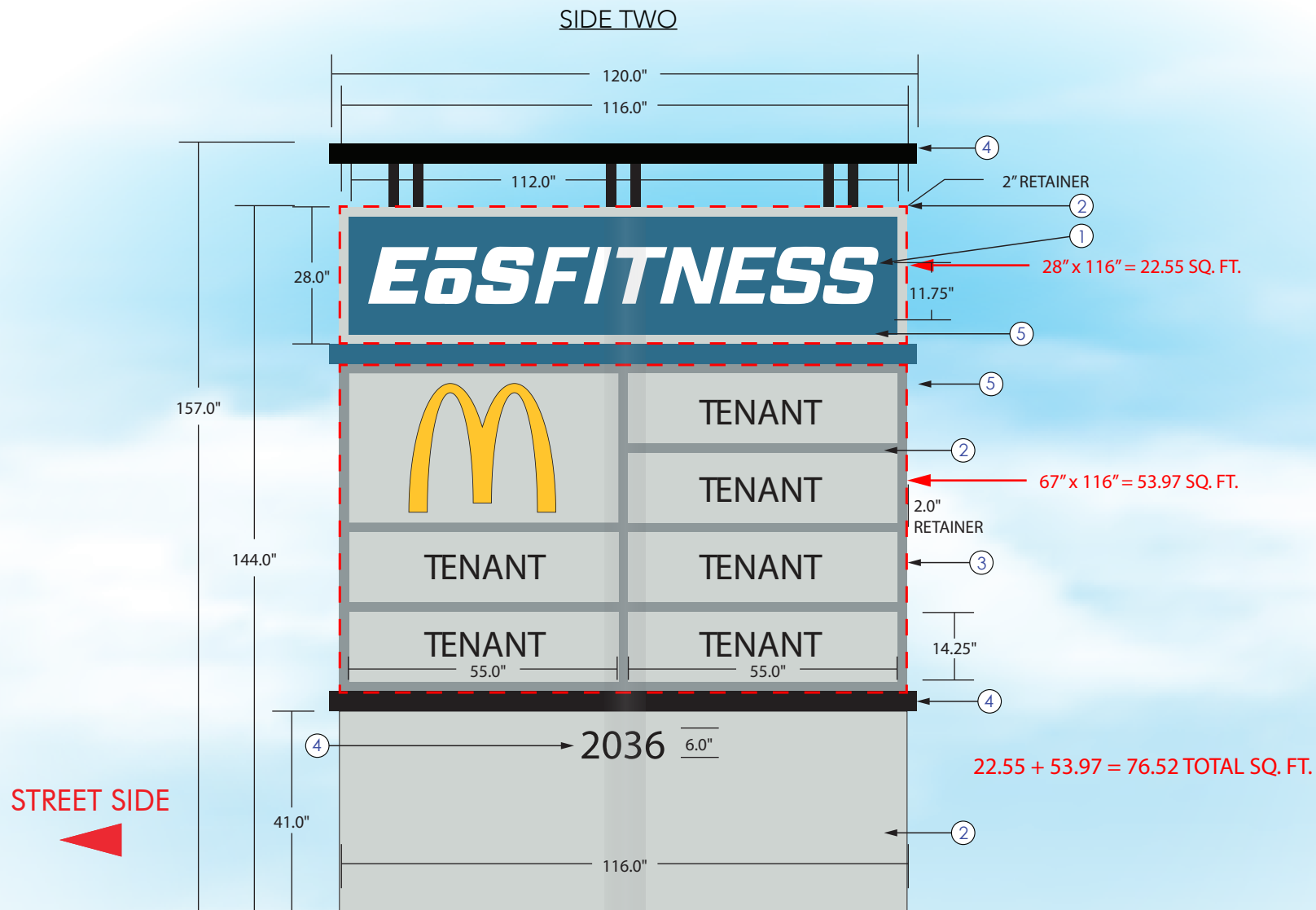
- MAIN CABINET**  
.125" ALUMINUM SKIN  
PAINTED; AS NOTED; SATIN FINISH  
INTERNALLY ILLUMINATED WITH WHITE LED'S
- TENANT PANELS**  
.125" ALUMINUM FLAT PANELS;  
ROUTED AND BACKED WITH WHITE 1/8" PLEX  
PAINTED; AS NOTED; SATIN FINISH
- ADDRESS NUMBERS - 6" TALL**  
1/4" FCO ALUMINUM ADDRESS NUMBERS  
PAINTED; MP BLACK; SATIN FINISH
- LOGOS/ TEXT ON TENANT PANELS**  
1ST SURFACE TRANSLUCENT DIGITAL PRINT APPLIED VINYL AS  
REQUIRED TO SIGNIFY TENANT NAMES AND LOGOS  
2ND SURFACE 70% DIFFUSER AS NECESSARY
- ROOF FEATURE**  
2" SQUARE TUBE SUPPORTS  
.125" ROOF FEATURE  
PAINTED; MP BLACK; SATIN FINISH
- POLE COVER**  
125" ALUMINUM SKIN  
PAINTED; MP TO MATCH CADET SW 9143; SATIN FINISH
- SUPPORT**  
8"Ø SCHEDULE 40 PIPE SET INTO 3' x 8' 2500 PSI  
CONCRETE FOOTER  
PER STANDARD ASA



DATE:

- ☐ PROOF OK AS IS
- ☐ PROCEED WITH CHANGES AS MARKED

Your signature acknowledges full approval of design layout and content, releasing SummitWest Signs from responsibility in regard to incorrect information and design. All colors, sizes, positions and specifications shown on this page are artistic concepts only and may vary as needed to facilitate fabrication and installation. Final colors will be matched as close as possible. Slight color variances are inevitable due to materials used and variations in color adjustments between computer monitor and individual desktop printers. All designs are the sole property of SummitWest Signs, are © copyright 2015-2016 and may not be reproduced or used in any way without the written permission and consent of the copyright holder. Violators may be prosecuted.



COLOR SCHEDULE:

- ① TRANSLUCENT WHITE VINYL 3M 3630 - 20
- ② MP TO MATCH MISTY SW 6232
- ③ MP TO MATCH CADET SW 9143
- ④ MP BLACK
- ⑤ MP TO MATCH DOWN POUR SW 6516 / PMS 2995C

SPECIFICATIONS:

**MAIN CABINET**  
.125" ALUMINUM SKIN  
PAINTED; AS NOTED; SATIN FINISH  
INTERNALLY ILLUMINATED WITH WHITE LED'S

**TENANT PANELS**  
.125" ALUMINUM FLAT PANELS;  
ROUTED AND BACKED WITH WHITE 1/8" PLEX  
PAINTED; AS NOTED; SATIN FINISH

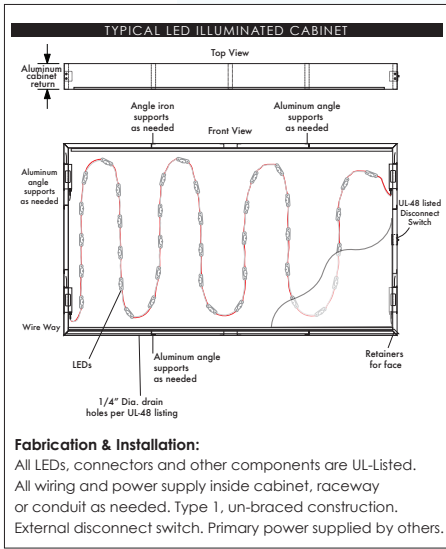
**ADDRESS NUMBERS - 6" TALL**  
1/4" FCO ALUMINUM ADDRESS NUMBERS  
PAINTED; MP BLACK; SATIN FINISH

**LOGOS/ TEXT ON TENANT PANELS**  
1ST SURFACE TRANSLUCENT DIGITAL PRINT APPLIED VINYL AS  
REQUIRED TO SIGNIFY TENANT NAMES AND LOGOS  
2ND SURFACE 70% DIFFUSER AS NECESSARY

**ROOF FEATURE**  
2" SQUARE TUBE SUPPORTS  
.125" ROOF FEATURE  
PAINTED; MP BLACK; SATIN FINISH

**POLE COVER**  
125" ALUMINUM SKIN  
PAINTED; MP TO MATCH CADET SW 9143; SATIN FINISH

**SUPPORT**  
8"Ø SCHEDULE 40 PIPE SET INTO 3' x 8' 2500 PSI  
CONCRETE FOOTER  
PER STANDARD ASA





DATE:

- ☐ PROOF OK AS IS  
☐ PROCEED WITH CHANGES AS MARKED

Your signature acknowledges full approval of design layout and content, releasing SummitWest Signs from responsibility in regard to incorrect information and design. All colors, sizes, positions and specifications shown on this page are artistic concepts only and may vary as needed to facilitate fabrication and installation. Final colors will be matched as close as possible. Slight color variances are inevitable due to materials used and variations in color adjustments between computer monitor and individual desktop printers. All designs are the sole property of SummitWest Signs, are © copyright 2015-2016 and may not be reproduced or used in any way without the written permission and consent of the copyright holder. Violators may be prosecuted.