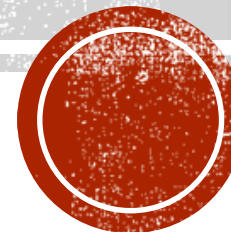


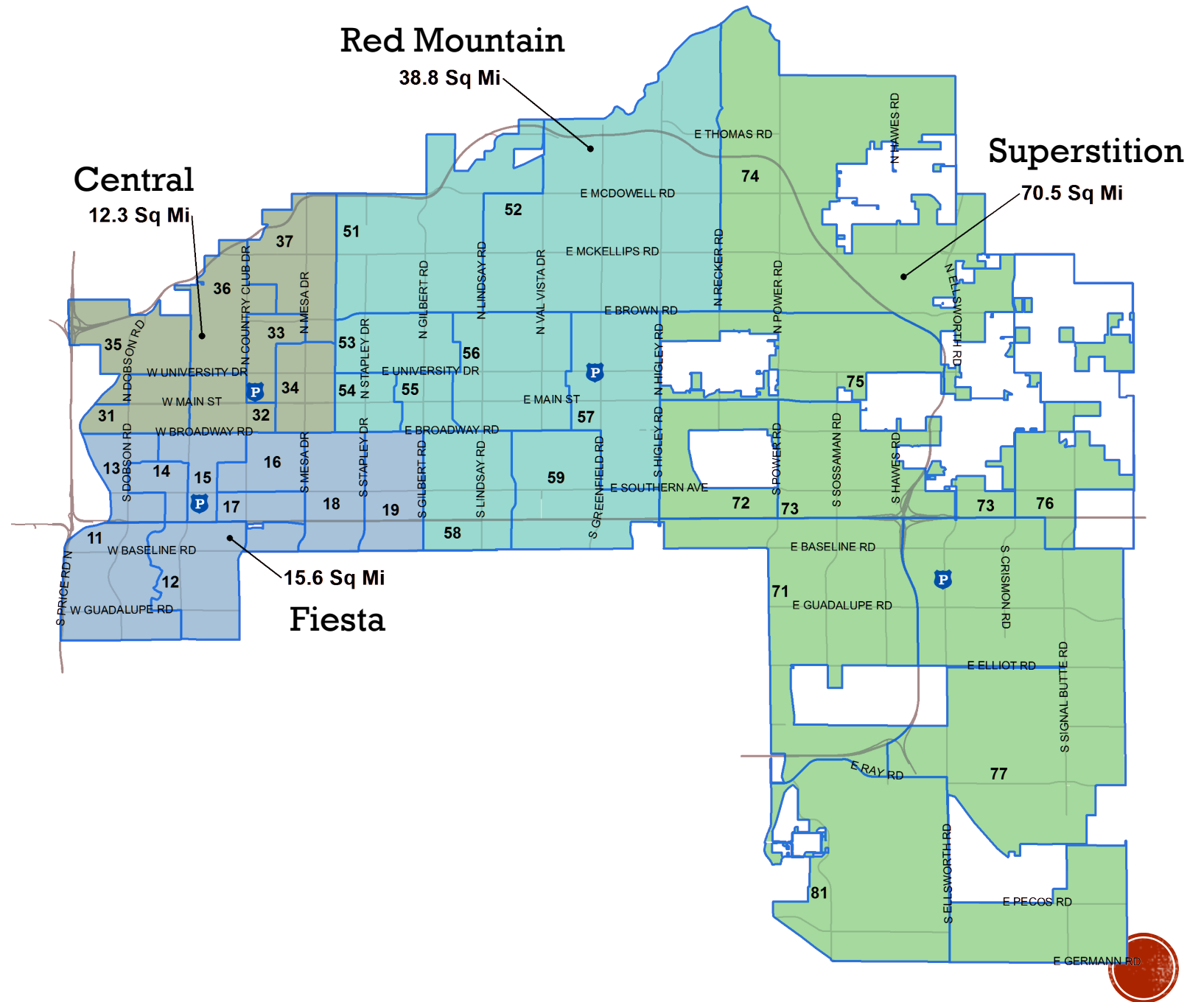
PUBLIC SAFETY FACILITY

North East Mesa Police & Fire Site Location

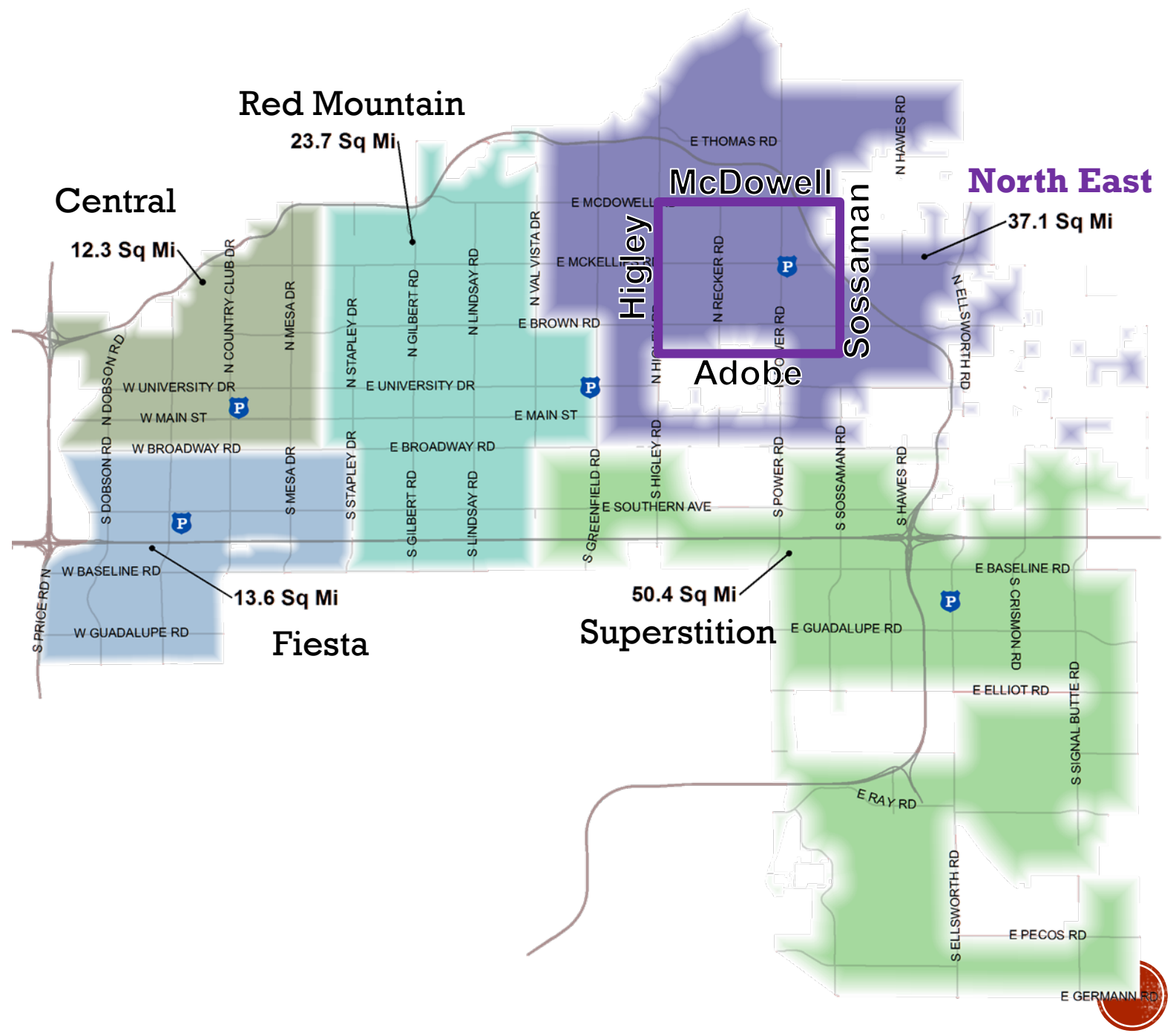


POLICE DIVISIONS

**CURRENT
DIVISIONS
(4)**

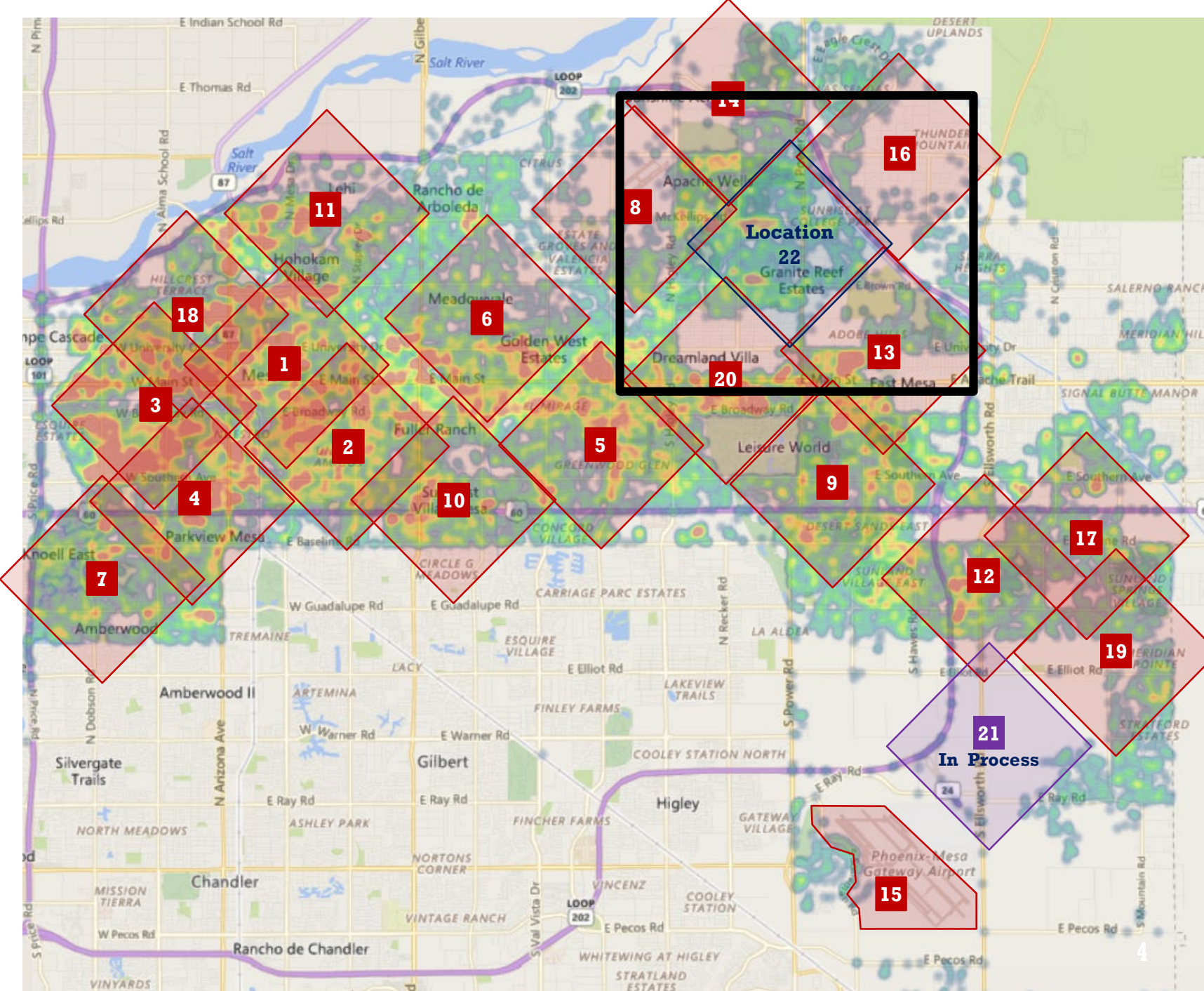


CONCEPT DIVISIONS (5)



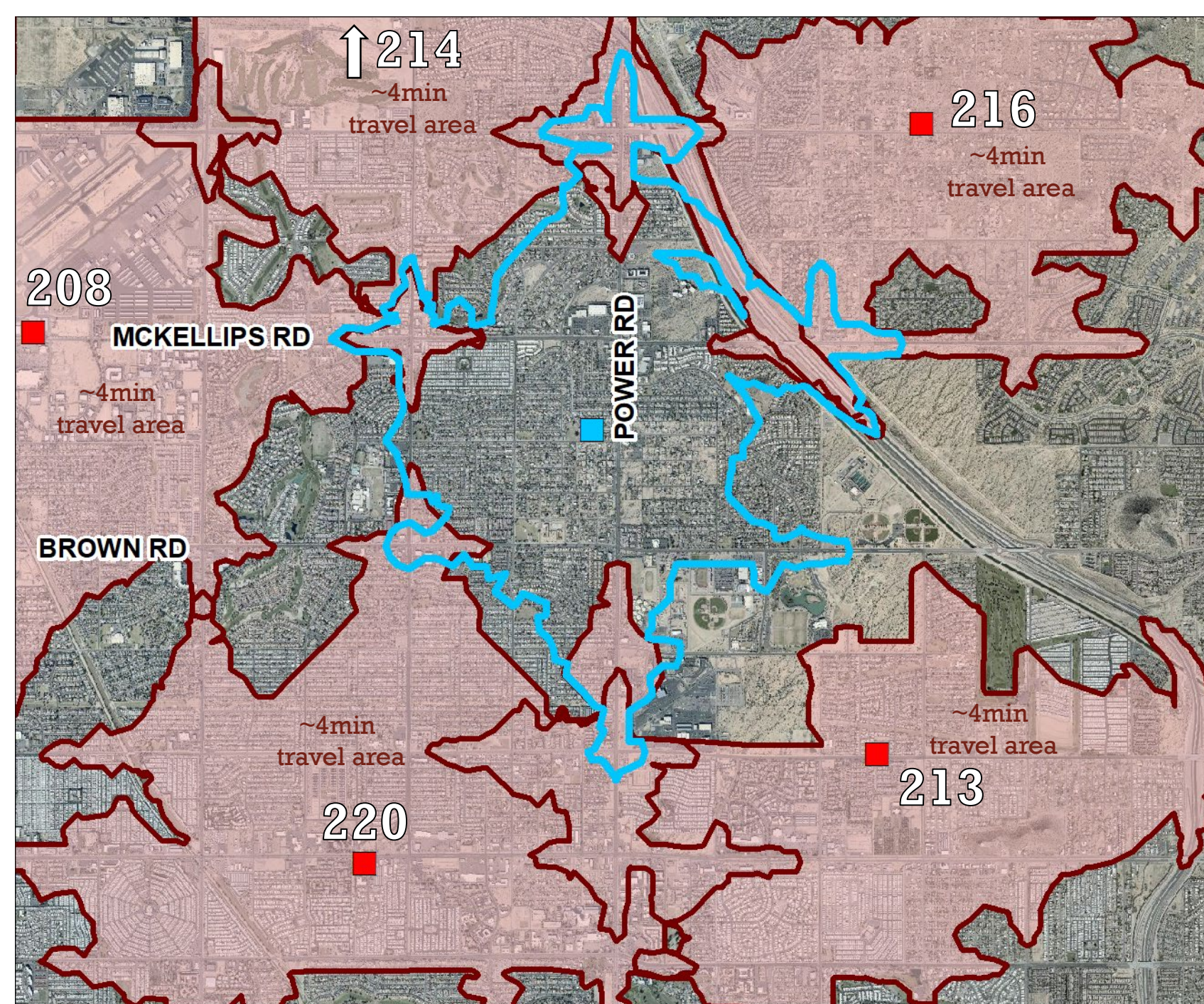
FIRE STATIONS

- Current Stations
- Approximate 4-minute travel zone
 - In the last 12 months, our units traveled to 64% of calls within 4 minutes



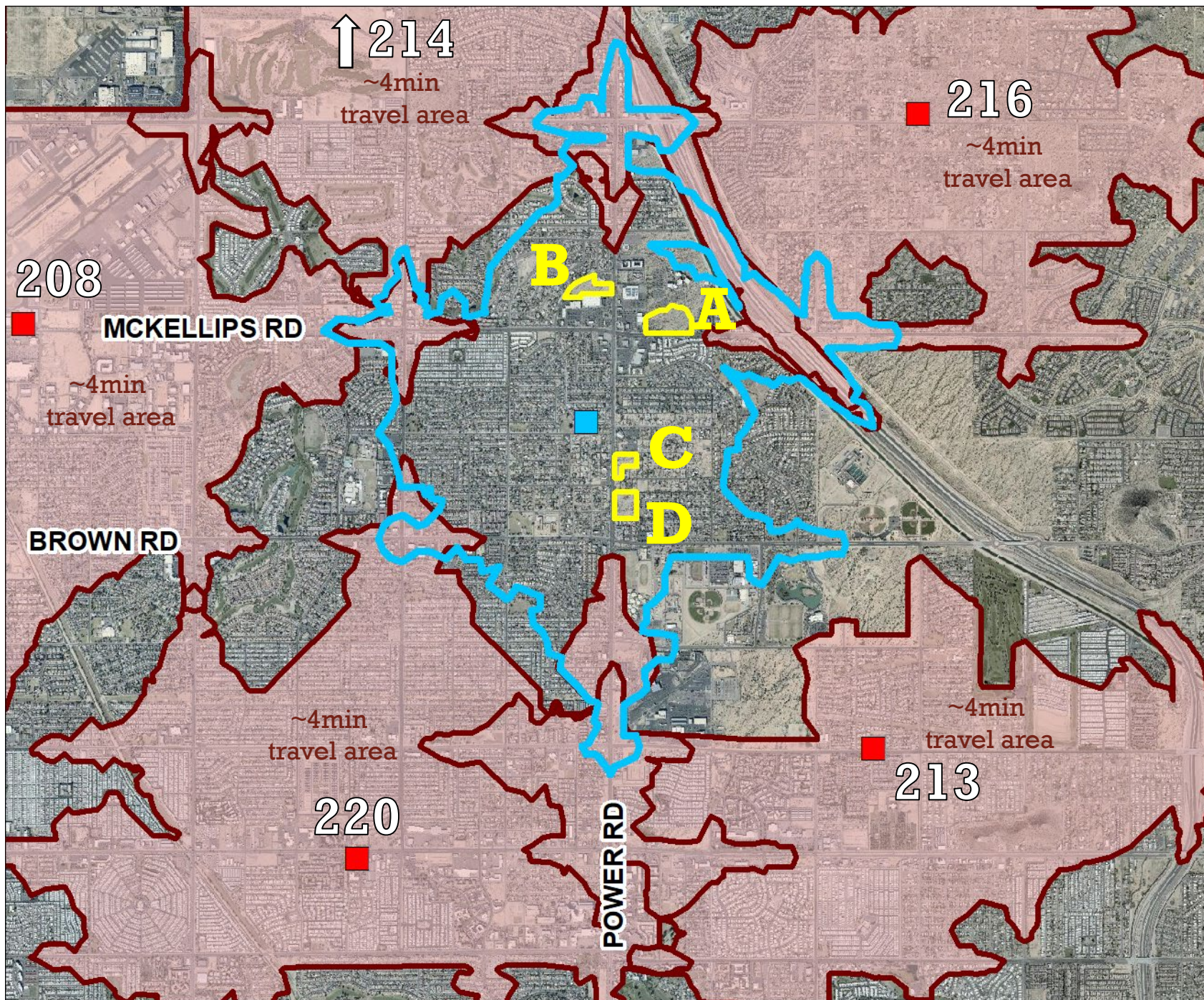
STATION 222

Location 22 is served by
Station 214
Station 216
Station 208
Station 213
Station 220



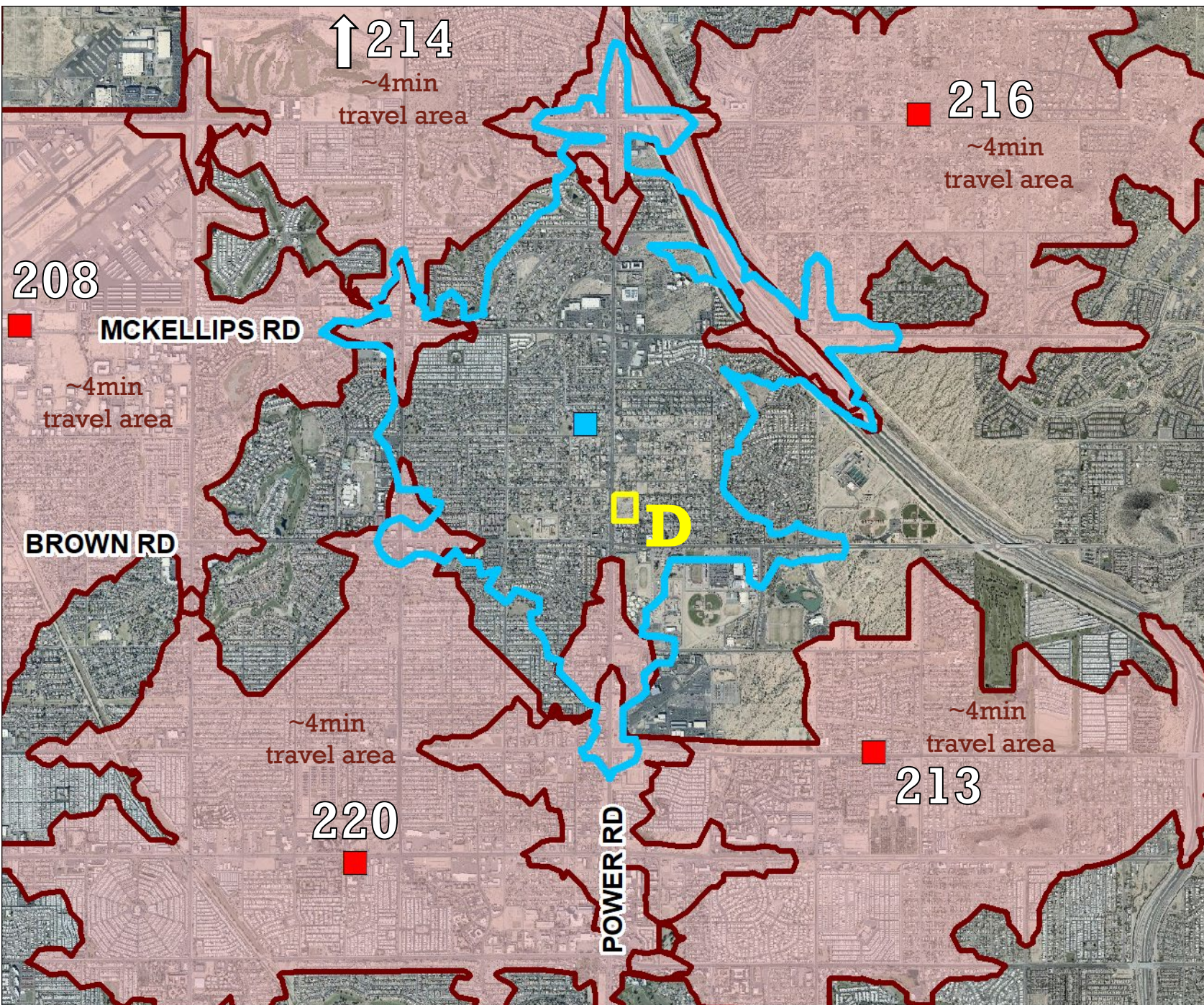
STATION 222

Four properties with at least 4 acres were identified in the target area



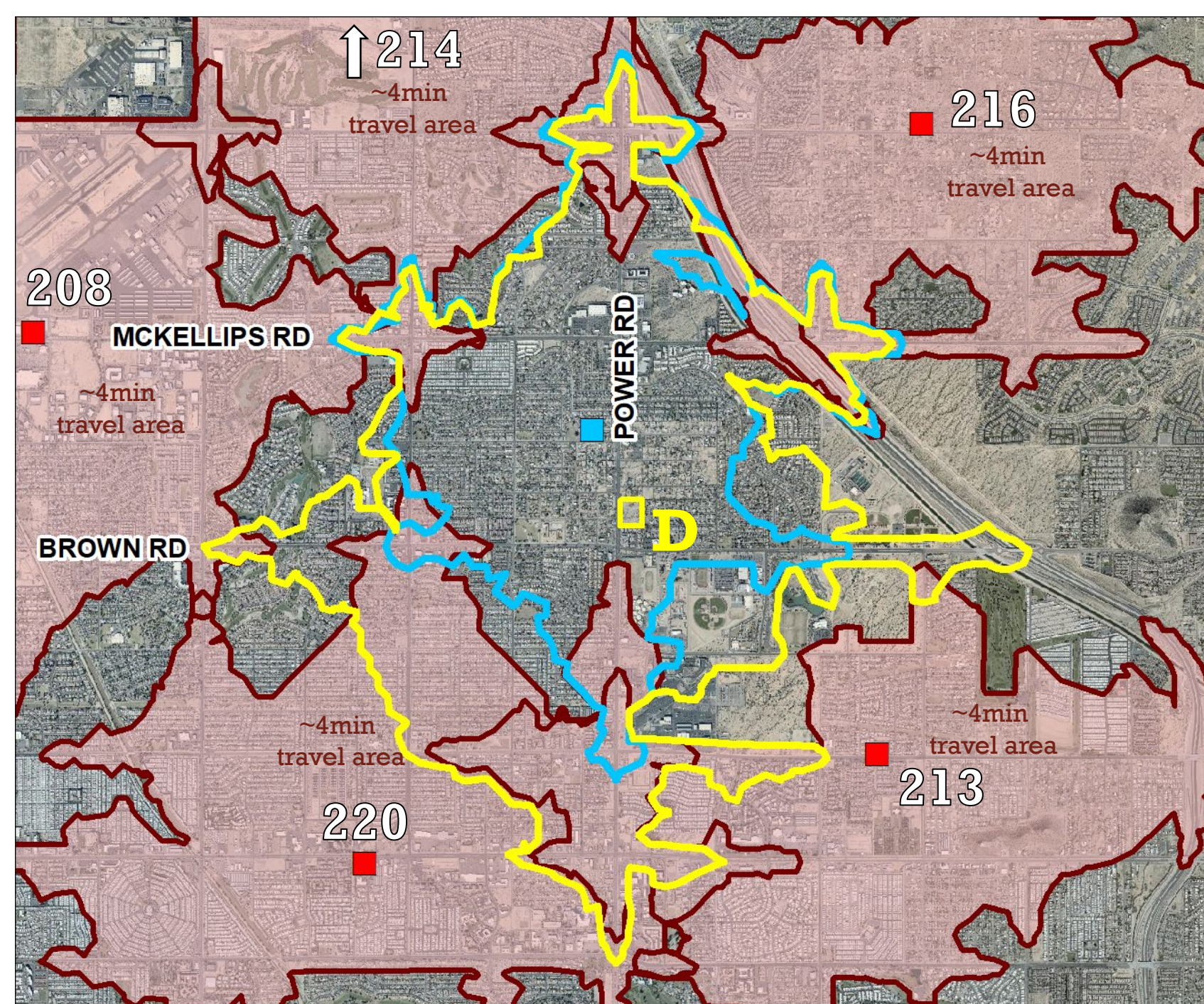
STATION 222

Site D is ~0.5 miles from
the analytical center



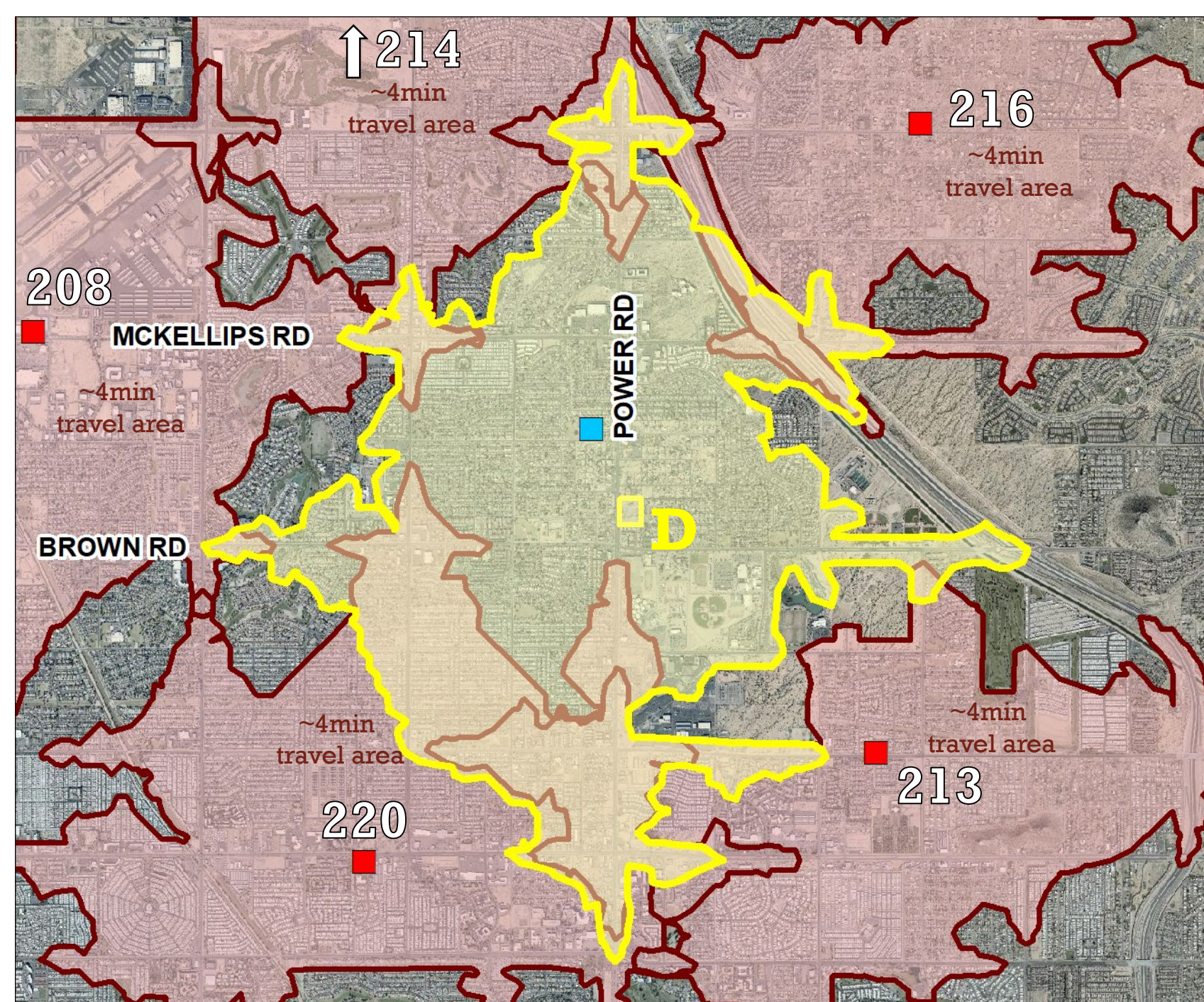
STATION 222

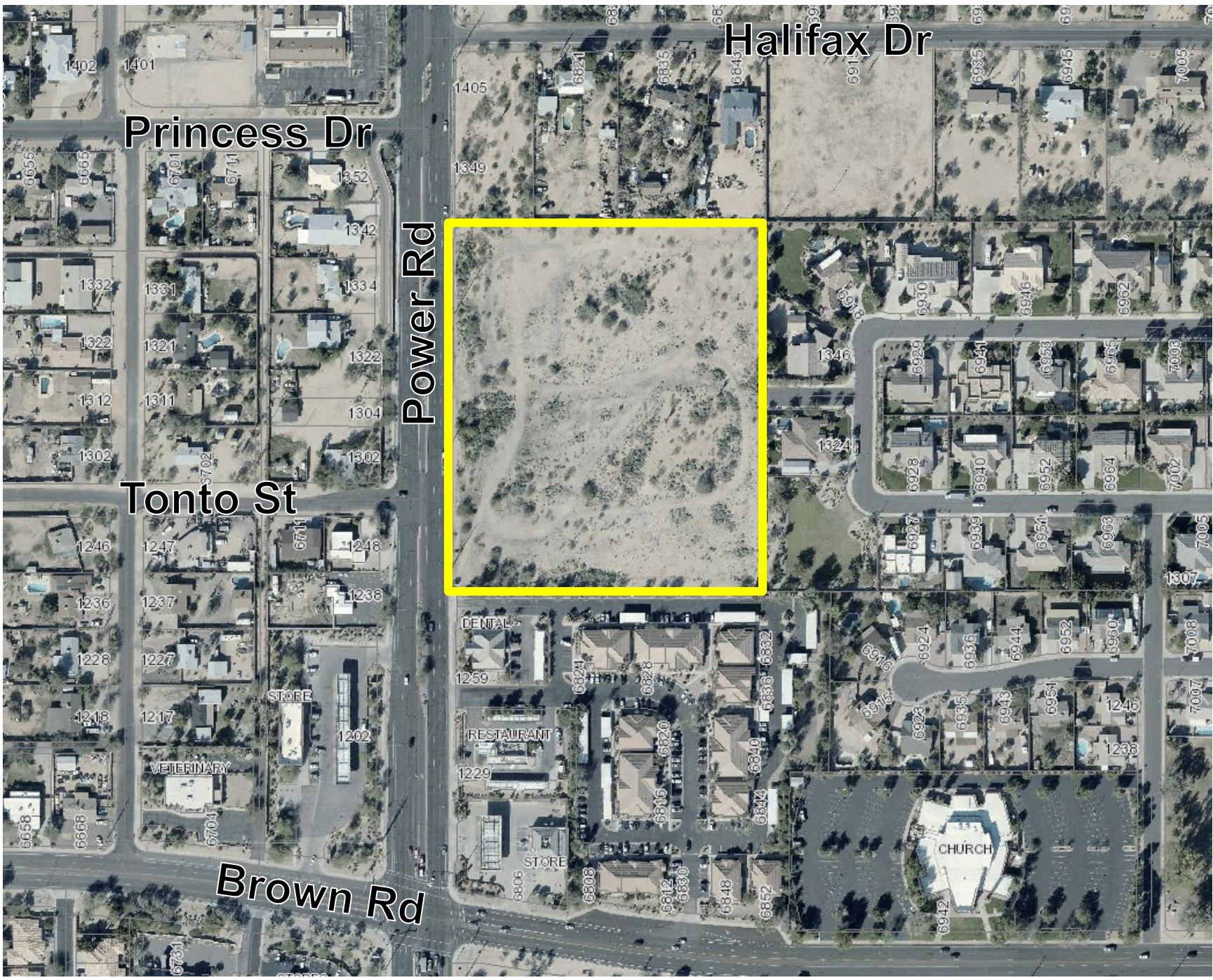
Site D is ~0.5 miles from the analytical center, but because it is on Power Rd, the 4-minute travel range improves significantly



STATION 222

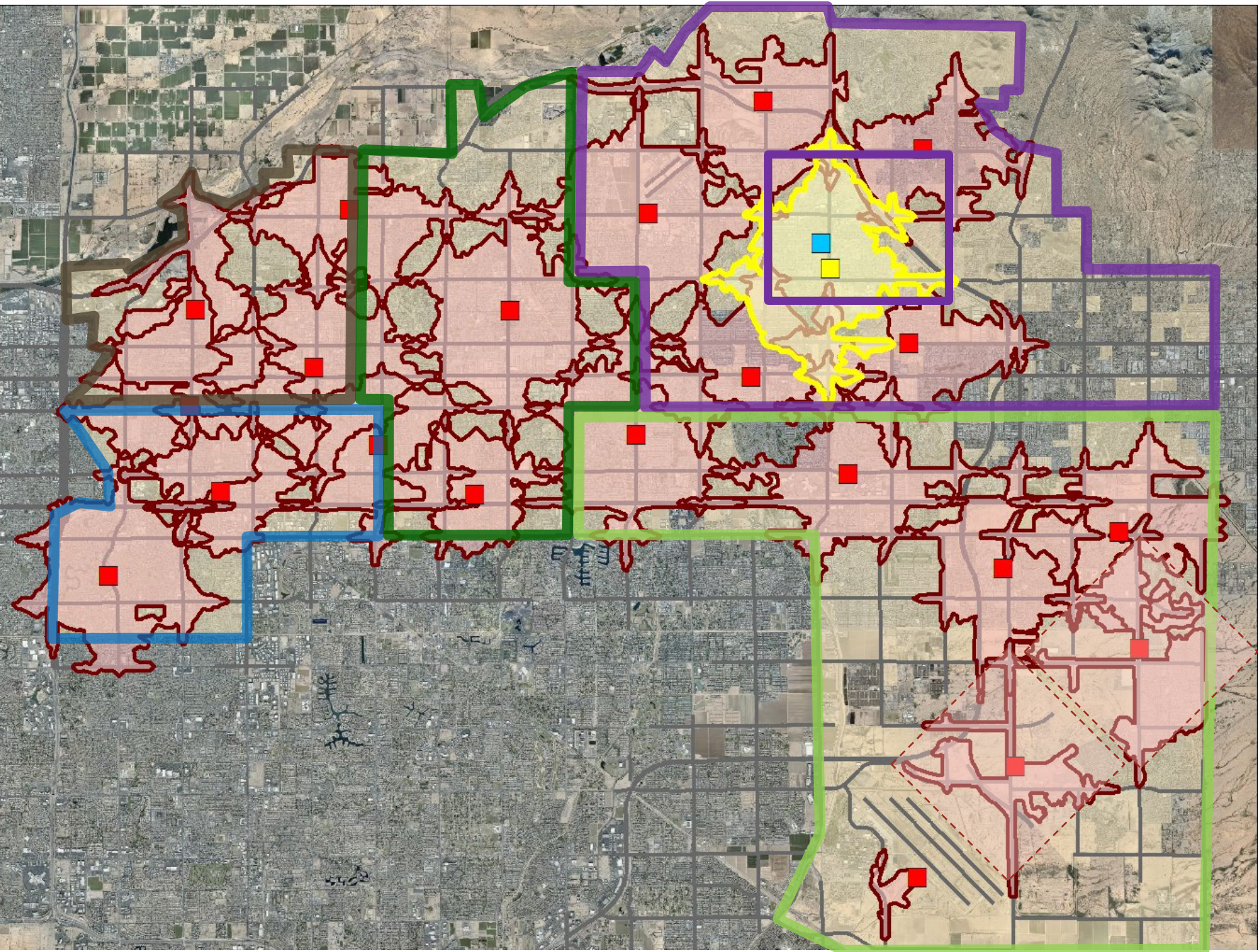
Fire travel times improve
from 39% within 4-minute
to about 65%



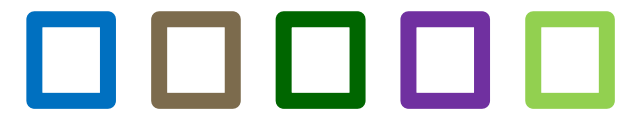


NORTHEAST PUBLIC SAFETY FACILITY

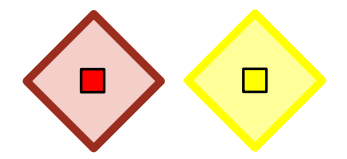
Power & Brown



POLICE DIVISIONS



FIRE STATIONS





APPENDIX



MESA FIRE STATIONS

- **Current Stations**
- **Approximate 4-minute response zone**
 - About 50% of the City is within 4-minute travel time from a station
- **Identify major gaps and add future station coverage zones (blue); avoid gaps and overlaps**
 - With 30 Stations, about 80% of the City of the City is within 4-minute travel time from a station

