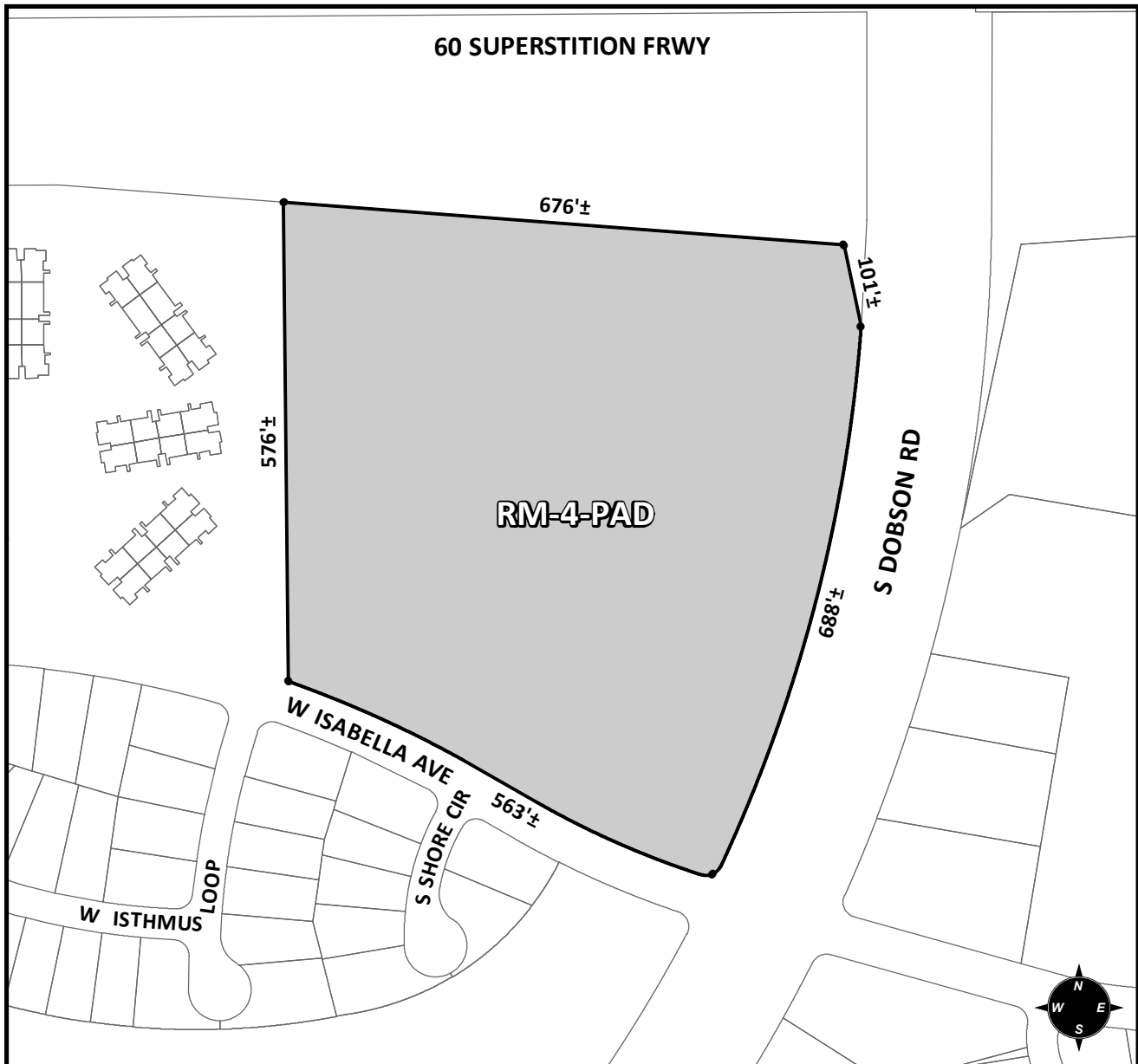




OFFICIAL SUPPLEMENTARY ZONING MAP AMENDING THE CITY OF MESA ZONING MAP



CASE: ZON19-00322

ACREAGE: 10±

REQUEST: REZONE FROM LC-PAD TO RM-4-PAD

ORDINANCE: _____

Please be advised that the attached zoning changes were approved by the Mesa City Council on _____, 2019 by Ordinance # _____. If you have any questions concerning these changes, contact the City of Mesa Planning Division at 480-644-2385.

MAYOR

ATTEST: _____
CITY CLERK

DATE: _____