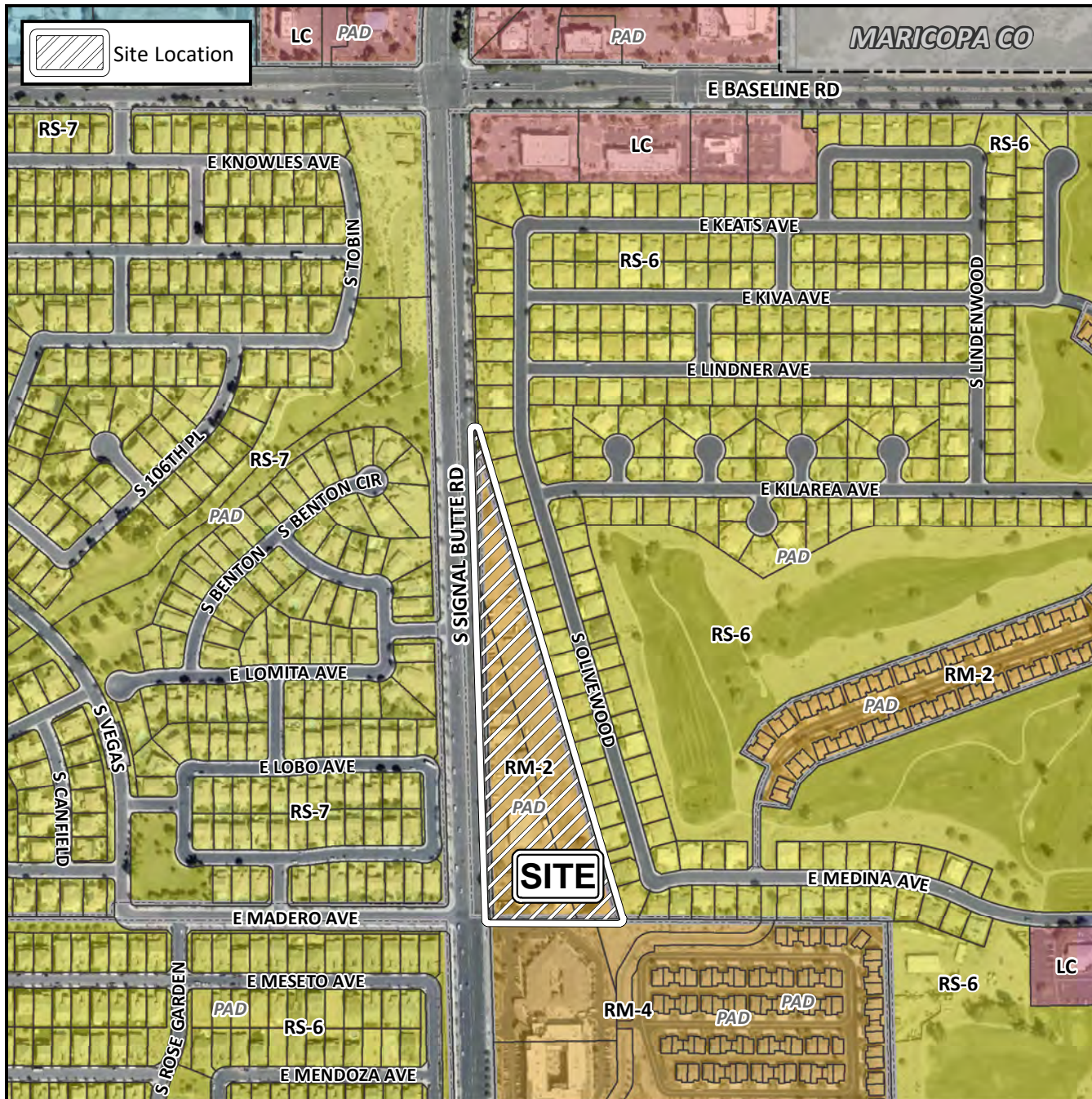


Final Plat Vicinity Map



Case Details

Project:

Olivewood Condominiums at Sunland Springs Village

Site/Address:

(District 6) Within the 2100 to 2400 blocks of South Signal Butte Road (east side). Located south of Baseline Road on the east side of Signal Butte Road. (9.8± acres)

Description:

Olivewood Condominiums at Sunland Springs Village, LLC, Developer. Robert J. Blake, Clouse Engineering, Inc., Surveyor.

