

RESOLUTION NO. _____

**A RESOLUTION OF THE CITY COUNCIL OF THE CITY OF
MESA, MARICOPA COUNTY, ARIZONA,
EXTINGUISHING A PORTION OF A 20-FOOT WATERLINE
AND PUBLIC UTILITY EASEMENT ON LOT 1 OF THE V.F.
FACTORY OUTLET PLAT, RECORDED IN BOOK 299 OF
MAPS, PAGE 9, RECORDS OF MARICOPA COUNTY,
ARIZONA, LOCATED AT 2055 SOUTH POWER ROAD.**

WHEREAS, the City Council has determined that a portion of the 20-foot waterline and public utility easement located on Lot 1 of the V.F. Factory Outlet plat, recorded in Book 299 of Maps, Page 9, records of Maricopa County, Arizona, located at 2055 South Power Road, as hereafter described, is no longer needed.

NOW THEREFORE, BE IT RESOLVED BY THE CITY COUNCIL OF THE CITY OF MESA, MARICOPA COUNTY, ARIZONA, AS FOLLOWS:

Section 1: All rights of the City of Mesa in and to the following described portion of this 20-foot Waterline and Public Utility Easement are extinguished:

**PLEASE REFER TO EXHIBIT “A” FOR THE LEGAL
DESCRIPTION ATTACHED HERETO AND BY THIS
REFERENCE MADE A PART HEREOF.**

PASSED AND ADOPTED by the City Council of the City of Mesa, Maricopa County, Arizona, this 9th day of September, 2019.

APPROVED:

Mayor

ATTEST:

City Clerk

EXHIBIT A-1

LEGAL DESCRIPTION

BEGINNING AT THE NORTHWEST CORNER OF SECTION 6, T1S, R7E, G&SRB&M

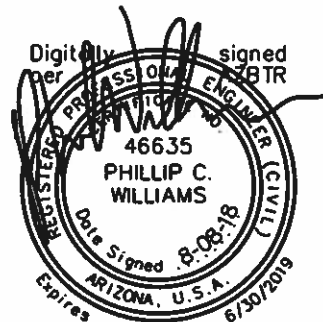
THENCE N 89°19'00" E, A DISTANCE OF 561.09 FEET ALONG THE NORTH LINE OF SAID SECTION 6 TO A POINT;

THENCE S 00°41'00" E, A DISTANCE OF 65.00 FEET TO A POINT ON THE SOUTH RIGHT OF WAY LINE OF BASELINE ROAD;

THENCE S 37°15'28" E, A DISTANCE OF 432.56 FEET TO THE TRUE POINT OF BEGINNING;

THENCE S 74°46'53" E, A DISTANCE OF 22.79 FEET;
THENCE S 43°52'38" W, A DISTANCE OF 274.28 FEET;
THENCE S 46°07'22" E, A DISTANCE OF 25.00 FEET;
THENCE S 43°52'38" W, A DISTANCE OF 20.00 FEET;
THENCE N 46°07'22" W, A DISTANCE OF 25.00 FEET;
THENCE S 43°52'38" W, A DISTANCE OF 273.19 FEET;
THENCE N 23°39'23" W, A DISTANCE OF 21.64 FEET;
THENCE N 43°52'38" E, A DISTANCE OF 121.25 FEET;
THENCE N 46°07'22" W, A DISTANCE OF 40.00 FEET;
THENCE N 43°52'38" E, A DISTANCE OF 20.00 FEET;
THENCE S 46°07'22" E, A DISTANCE OF 40.00 FEET;
THENCE N 43°52'38" E, A DISTANCE OF 252.01 FEET;
THENCE N 46°07'22" W, A DISTANCE OF 40.00 FEET;
THENCE N 43°52'38" E, A DISTANCE OF 20.00 FEET;
THENCE S 46°07'22" E, A DISTANCE OF 40.00 FEET;
THENCE N 43°52'38" E, A DISTANCE OF 135.00 FEET TO THE TRUE POINT OF BEGINNING.

AREA COMPRISING 13,257.38 SF MORE OR LESS.



R.B. WILLIAMS & ASSOCIATES, INC.

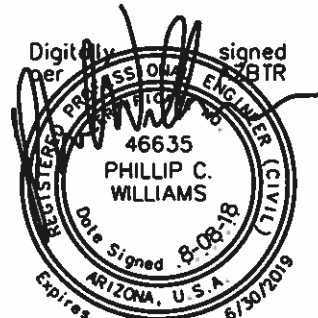
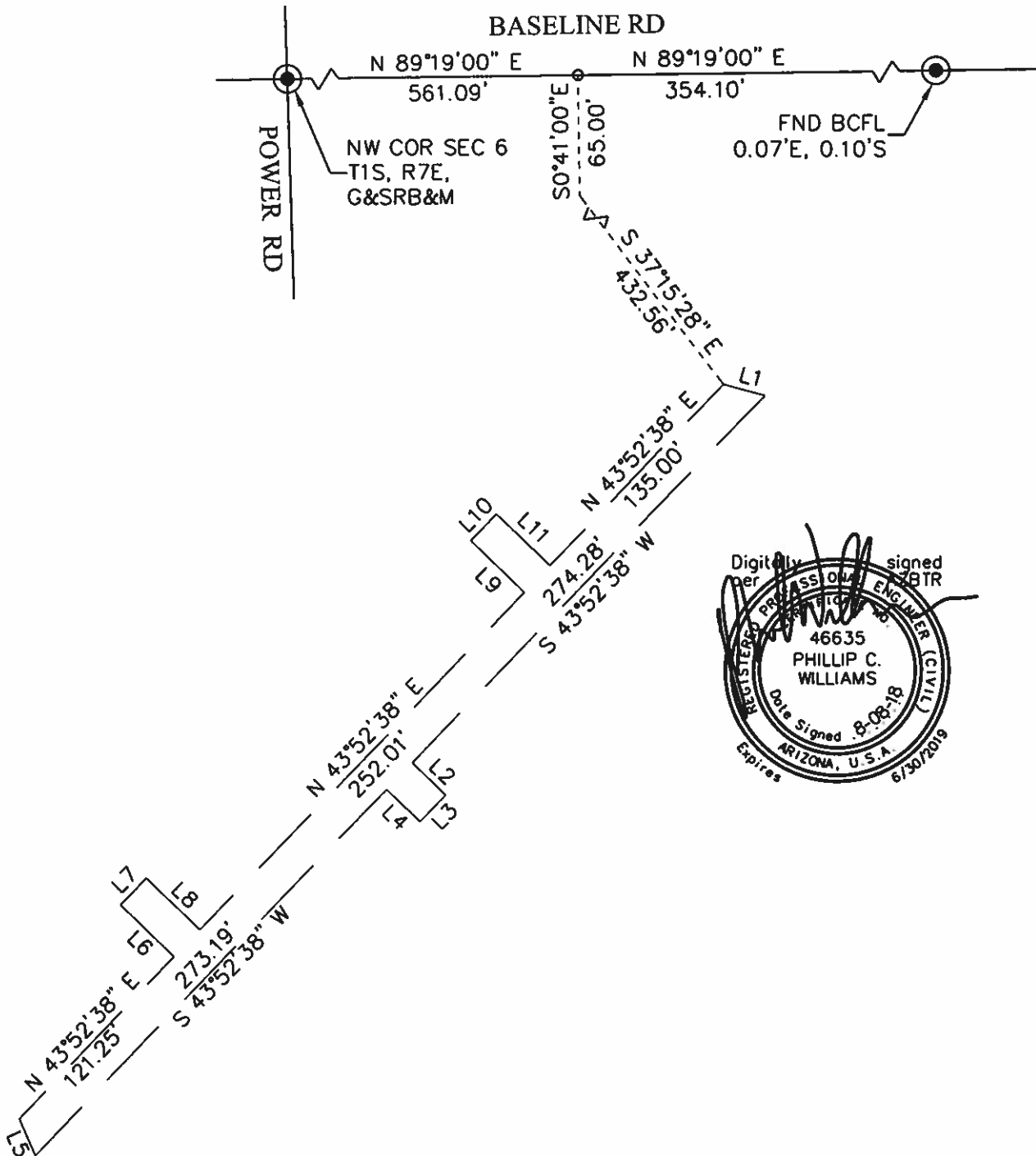
CONSULTING ENGINEERS

40 W BASELINE RD., #110 PHONE (480) 424-2352
TEMPE, ARIZONA 85283 FAX (480) 424-2353

**ABANDONMENT
EXHIBIT**

P. 1/2

EXHIBIT A-2



R.B. WILLIAMS & ASSOCIATES, INC.

CONSULTING ENGINEERS

40 W BASELINE RD., #110 PHONE: (480) 424-2352
TEMPE, ARIZONA 85283 FAX: (480) 424-2353



**ABANDONMENT
EXHIBIT**

P. 2/2