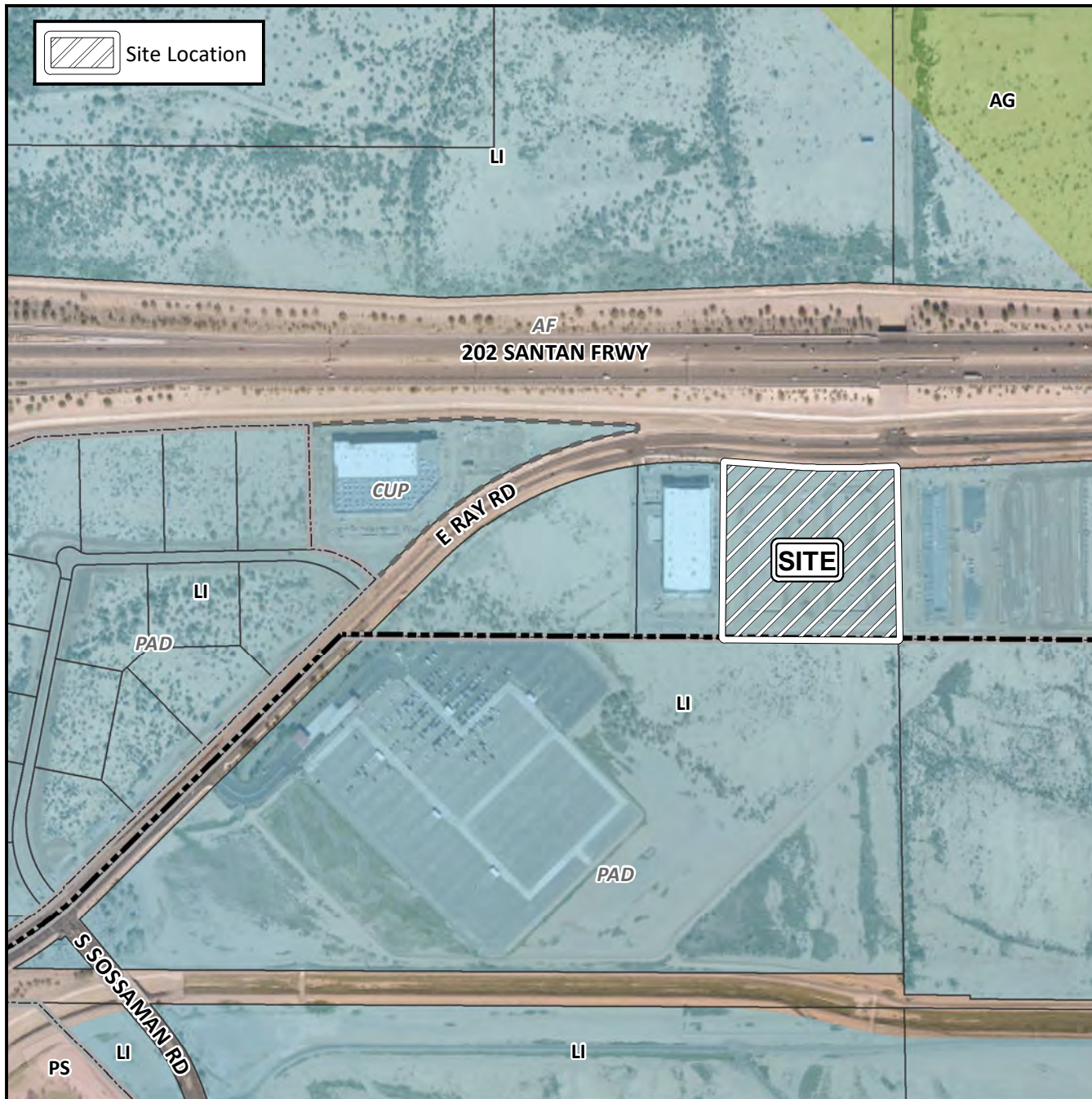


## Board of Adjustment Vicinity Map: BOA19-00301



## Case Details

### Case:

BOA19-00301

### Site / Address:

District 6. 7500 through 7600 block of East Ray Road (south side)

### Request:

Requesting a Special Use Permit (SUP) to allow a Comprehensive Sign Plan (CSP) in the LI District.

