



Thomas English
Retail Real Estate

Client

Project

DXU
ARCHITECTS
412 S. Wells Street, 2nd Floor, Chicago, IL 60607
P: 312 955 0334 www.dxuarch.com

ILLINOIS DESIGN FIRM # 184.006688

Architect o

THESE DRAWINGS AND SPECIFICATIONS ARE THE CONFIDENTIAL AND PROPRIETARY PROPERTY OF DXU LLC, AND SHALL NOT BE COPIED OR REPRODUCED WITHOUT WRITTEN AUTHORIZATION.

SCALE: 1/4" = 1'-0"

KEYNOTE LEGEND	
KEYNOTE	DESCRIPTION
4	PREFINISHED GALVANIZED METAL COPING - SEE EXTERIOR FINISH SCHEDULE
12	ROOF SCUTLE - MANUFACTURER AND TYPE: TBD
14	CURB BY LANDLOD. PROVIDE A CRICKET FOR CURB AS SHOWN.
22	RTU & CURB BY LANDLOD. PROVIDE A CRICKET FOR CURB AS SHOWN - SEE MECH DWGS FOR DETAILS-VERIFY SIZE & LOCATION OF OPENING IN FIELD
23	ROOF CRICKET - TAPERED INSULATION - SLOPE TO SCUPPERS 1" PERFT. TYP
24	PROVIDE 24X24X1/2" THICK MIN. SKID RESISTANT ROOF WALK - SEE SPECS FOR DETAILS
25	SINGLE PLY(PO) ROOFING SYSTEM - SEE DETAIL #2 THIS SHEET & SPECIFICATIONS FOR DETAILS.

EP	ELECTRICAL POWER PANEL - SEE ELECTRICAL DRAWINGS
FT	CONCRETE FOOTING - SEE STRUCTURAL
IG-1	1" INSULATED LOW-E CLEAR GLAZING PANELS, DUAL SEALED UNITS.
L1	OUTDOOR WALL SCONCE, FLUSH MOUNT, SEE ELECTRICAL
L2	OUTDOOR WALL SCONCE OVER SERVICE DOOR, SEE ELECTRICAL
L3	SHALLOW PROJECTION RECESSED CAN LIGHTING TYPE E- SEE ELECTRICAL SHEETS FOR SPECS
L4	HABIT ILLUMINATED SIGN - STACKED LOGO
L5	HABIT MESA STANDARD ILLUMINATED LOGO
L6	SLEEP NUMBER STANDARD LOGO
L-7	EXTERIOR LIGHTING
LV-1	RTU SCREEN, LOUVER W/ COVER TRIM/ COLOR ALMOND
M1	RTU#1, TYPICAL RTU LOCATION SHOWN - REFER TO TENANT CONSTRUCTION DOCUMENTS FOR EXACT LOCATION OF ALL EQUIPMENT AND PENETRATION
M-7	AIR CURTAIN AT DRIVE-THRU WINDOW, SEE RCP NOTE #4 AND M2-01 FOR SPECS
SC1	CANOPY FRAME
SC2	CANOPY FRAME
SCD7	CANOPY FRAME - DRIVE THRU
ST1	STONE SWEEP, SEE WALL DETAILS
W2	COMMERCIAL, DOUBLE SLIDE THERMAL ALUMINUM WINDOW

[illegible]

NO	DAT	REVISIONS/ISSUANCE
----	-----	--------------------

PROFESSIONAL CERTIFICATION:
I CERTIFY THAT THESE DOCUMENTS WERE
PREPARED OR APPROVED BY ME, AND THAT I AM A
DULY LICENSED ARCHITECT UNDER THE LAWS OF
THE STATE OF ARIZONA, LICENSE NUMBER 59402.



SEA

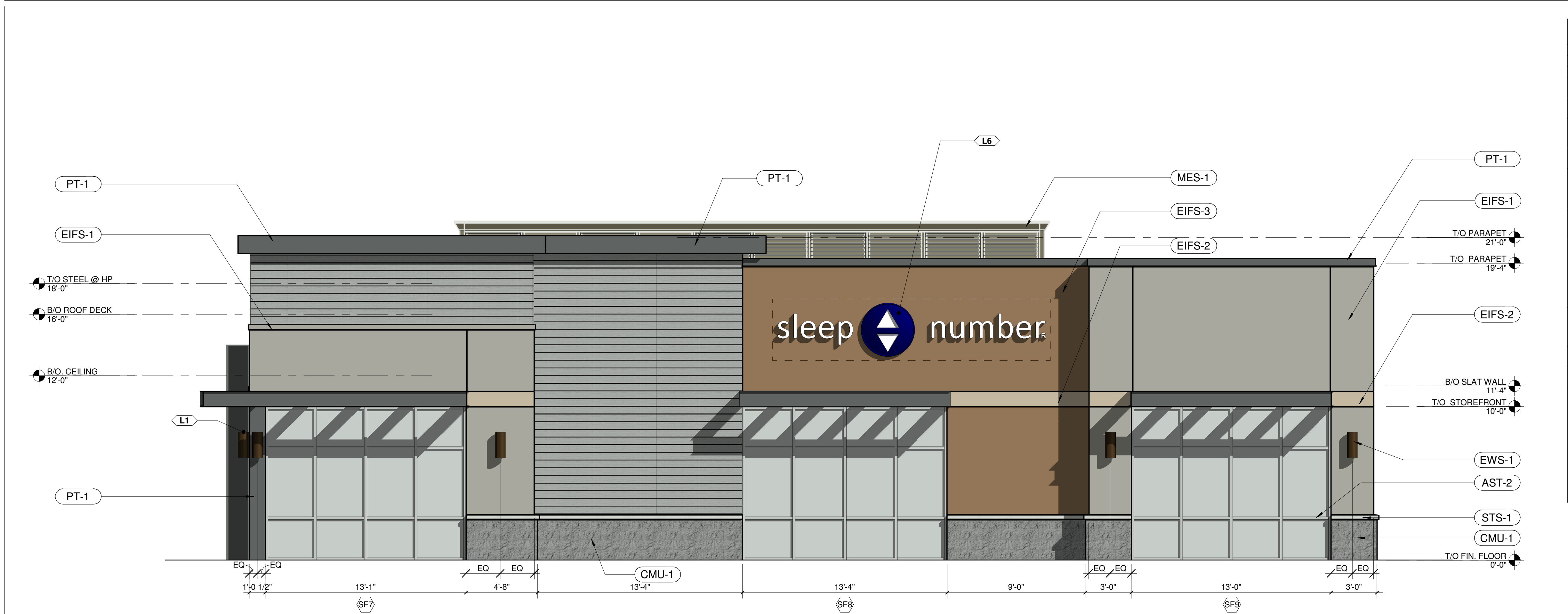
DATE	06/19/19
PROJECT	DXU#17-264
SCALE	1/4" = 1'-0"
DRAWN	DTE
CHECKED	BC
APPROVED	ES

A3-01

© 2019 DXU-STUDIO, LLC. All rights reserved.



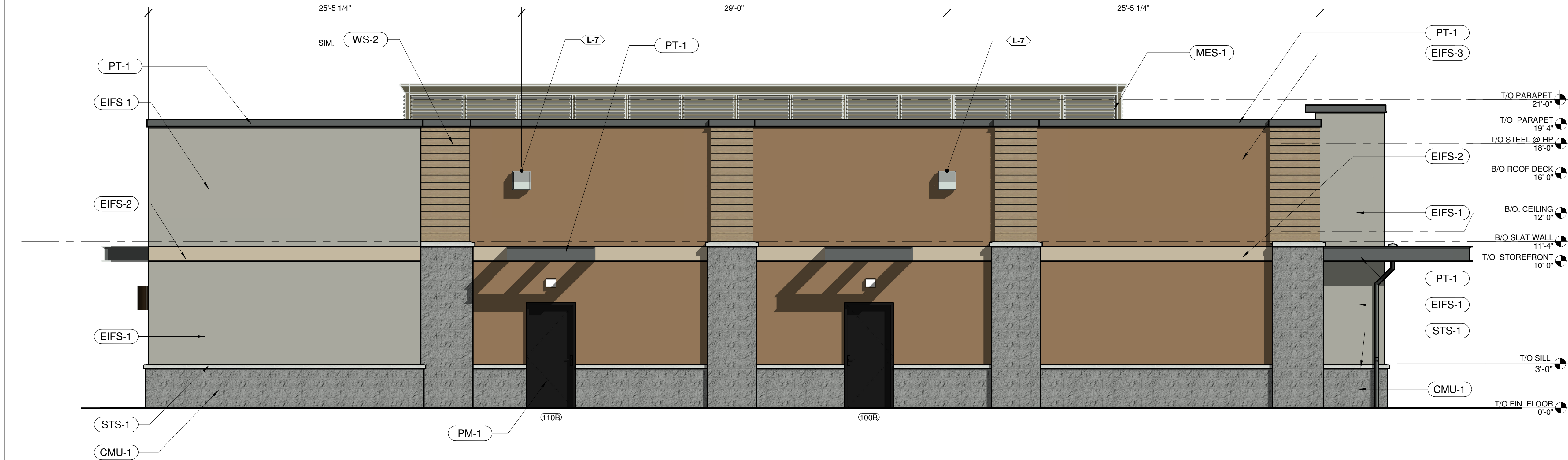
SCALE: 1/4" = 1'-0"



1 SOUTH ELEVATION
SCALE: 1/4" = 1'-0"

MATERIALS			
COD	DESCRIPTION	MFR	MODEL
AST-1	ALUMINUM STOREFRONT SYSTEM COLOR: SATIN BLACK	TBD	
AST-2	CLEAR ANODIZED ALUMINUM, MULLION TYP	TBD	
CMU-1	SPLIT FACE CMU, COLOR GREY	YORK BUILDING PRODUCTS	SPLIT FACE CMU COLOR 518 FLINT
EIFS-1	EIFS, COMPLETE FINISH, DRYVIT COLOR 615A TATTLETALE	DRYVIT	COLOR 615A TATTLETALE
EIFS-2	EIFS, COMPLETE FINISH, DRYVIT, COLOR 450A CLOVER.	DRYVIT	450A CLOVER
EIFS-3	EIFS, COMPLETE FINISH, COLOR BISQUE	DRYVIT	COLOR BISQUE
EWS-1	MTL BRONZE FINISH		BY MANUFACTUR ER
FB-2	SHADDERPORTS COVERINGS LINEN FINISH		
IG-2	1 IN CLEAR, TEMPERED INSULATED LOW-E, WITH WRITTEN VERIFICATION FROM GLASS COMPANY, DUAL SEALED UNITS, SEE SCHED.	KAWNEER	LOW-E INSULATED TEMPERED GLAZING
MES-1	PAINTING FINISH COAT, STANDARD, OVER GALVANIZED MTL SURFACE	CITYSCAPE S/ SHERWIN WILLIAMS	STANDARD COLOR SLATE GREY
PM-1	BLACK PAINTING, MATTE FINISH, OVER GALVANIZED MTL SURFACE	SHERWIN WILLIAMS	BLACK
WD-3	WOOD, NATURAL CEDAR (SHADDERPORTS STRUCTURE)		
WS-1	HORIZONTAL COMPOSITE CLADDING, ULTRASHIELD, COLOR WESTMINSTER GREY	NEWTECH WOOD	ULTRASHIELD 6X1/2 TONGUE AND GROOVE US09, COLOR WESTMINSTE R GREY
WS-2	HORIZONTAL COMPOSITE CLADDING, ULTRASHIELD COLOR PERUVIAN TEAK	NEWTECH WOOD	ULTRASHIELD 6X1/2 TONGUE AND GROOVE US09, COLOR PERUVIAN TEAK

KEYNOTE LEGEND	
KEYNOTE	DESCRIPTION
4	PREFINISHED GALVANIZED METAL COPING - SEE EXTERIOR FINISH SCHEDULE
12	ROOF SCUTTLE - MANUFACTURER AND TYPE: TBD
14	CURB BY LANDLORD. PROVIDE A CRICKET FOR CURB AS SHOWN.
22	RTU & CURB BY LANDLORD. PROVIDE A CRICKET FOR CURB AS SHOWN - SEE MECH DWGS FOR DETAILS-VERIFY SIZE & LOCATION OF OPENING IN FIELD
23	ROOF CRICKET - TAPERED INSULATION - SLOPE TO SCUPPERS 1" PER/FT, TYP
24	PROVIDE 24"X24"X1/2" THICK MIN. SKID RESISTANT ROOF WALK - SEE SPECS FOR DETAILS
25	SINGLE PLY(TPO) ROOFING SYSTEM - SEE DETAIL #2 THIS SHEET & SPECIFICATIONS FOR DETAILS.



2 EAST ELEVATION
SCALE: 1/4" = 1'-0"

Municipal Approval

Thomas English
Retail Real Estate

THOMAS ENGLISH
725 E. 65TH STREET, STE 300
INDIANAPOLIS, IN 46220

Clien

PROPOSED MULTI-TENANT
DEVELOPMENT

1961 S. VAL VISTA DR
MESA, AZ 85204

Projec

DXU
ARCHITECTS
412 S. Wells Street, 2nd Floor, Chicago, IL 60607
P: 312 955 0334 www.dxuarch.com

ILLINOIS DESIGN FIRM # 184 006688

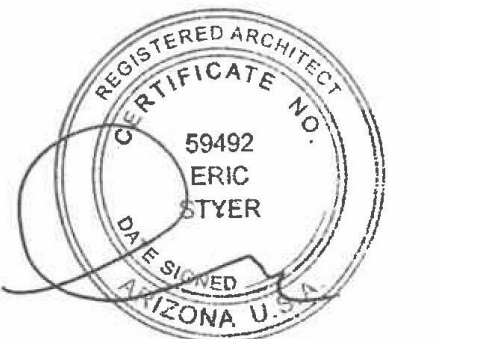
Architect of

THESE DRAWINGS AND SPECIFICATIONS ARE THE CONFIDENTIAL AND
PROPRIETARY PROPERTY OF DXU LLC, AND SHALL NOT BE COPIED OR
REPRODUCED WITHOUT WRITTEN AUTHORIZATION.

Consultan

NO DAT REVISIONS/ISSUANCE

PROFESSIONAL CERTIFICATION:
I CERTIFY THAT THESE DOCUMENTS WERE
PREPARED OR APPROVED BY ME, AND THAT I AM A
DULY LICENSED ARCHITECT UNDER THE LAWS OF
THE STATE OF ARIZONA, LICENSE NUMBER 59402.



SEAL

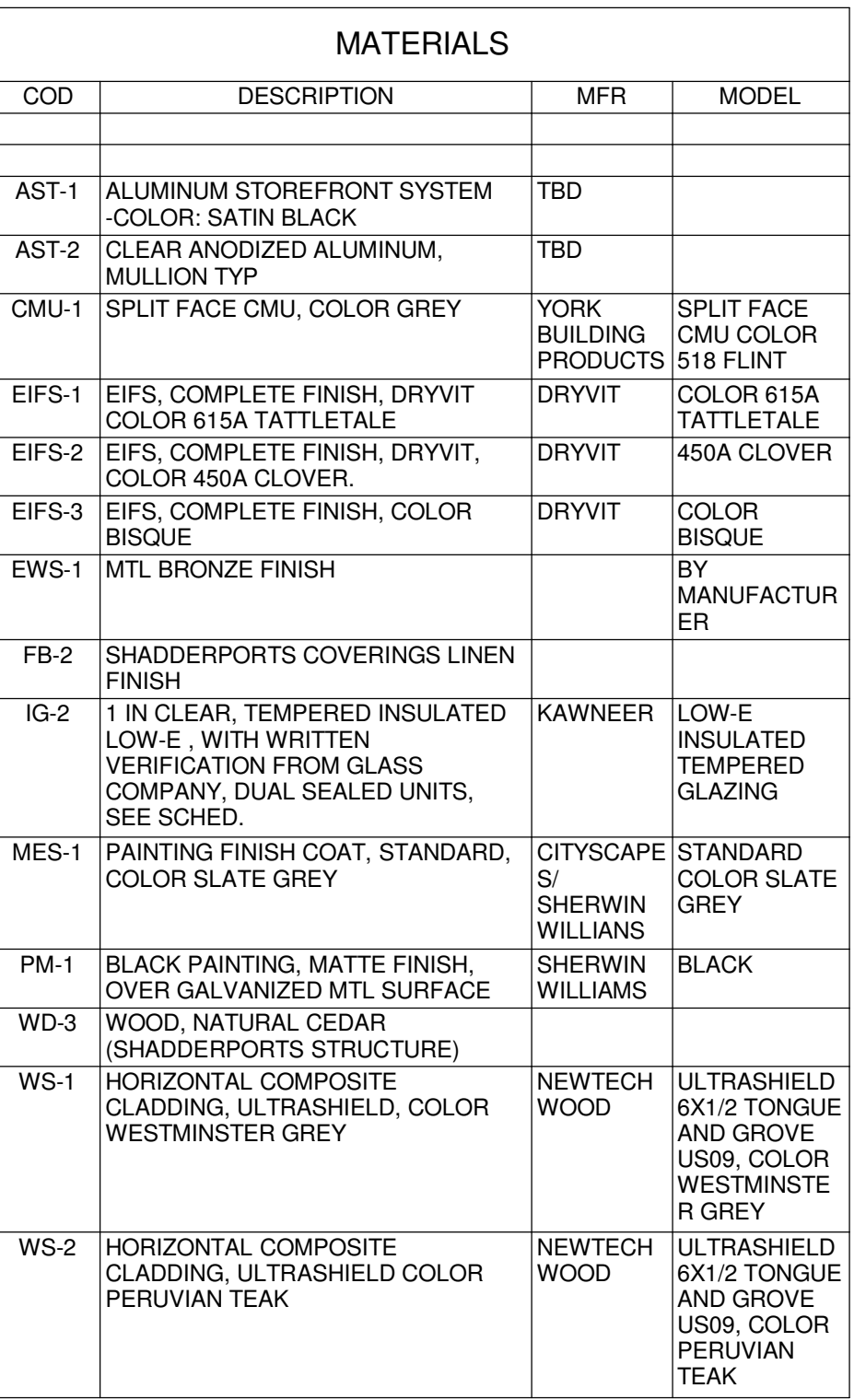
FOR PERMIT/ FOR BID

DATE 06/19/19
PROJECT DXU#17-264
SCALE 1/4" = 1'-0"
DRAWN DTE
CHECKED BG
APPROVED ES

EXTERIOR ELEVATIONS

A3-02

© 2019 DXU-STUDIO, LLC. All rights reserved.



Thomas English
Retail Real Estate

Client

1961 S. VAL VISTA DR
MESA, AZ 85204

Project

DXU
ARCHITECTS
412 S. Wells Street, 2nd Floor, Chicago, IL 60606
P: 312 955 0334 www.dxuarch.com

ILLINOIS DESIGN FIRM # 184.00668

Architect o

THESE DRAWINGS AND SPECIFICATIONS ARE THE CONFIDENTIAL AND PROPRIETARY PROPERTY OF DXU LLC. AND SHALL NOT BE COPIED OR REPRODUCED WITHOUT WRITTEN AUTHORIZATION.

SCALE: 1/4" = 1'-0"

KEYNOTE LEGEND	
KEYNOTE	DESCRIPTION
4	PREFINISHED GALVANIZED METAL COPING - SEE EXTERIOR FINISH SCHEDULE
12	ROOF SCUTTLE - MANUFACTURER AND TYPE: TBD
14	CURB BY LANDLORD. PROVIDE A CRICKET FOR CURB AS SHOWN.
22	RTU & CURB BY LANDLORD. PROVIDE A CRICKET FOR CURB AS SHOWN - SEE MECH DWGS FOR DETAILS-VERIFY SIZE & LOCATION OF OPENING IN FIELD
23	ROOF CRICKET - TAPERED INSULATION - SLOPE TO SCUPPERS 1" PER FT. TYP
24	PROVIDE 24"x24"x1/2" THICK MIN. SKID RESISTANT ROOF WALK SEE SPECS FOR DETAILS
25	SINGLE PLY(TPO) ROOFING SYSTEM - SEE DETAIL #2 THIS SHEET & SPECIFICATIONS FOR DETAILS.

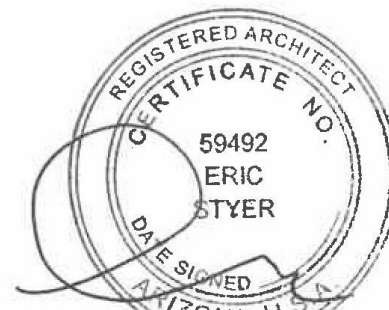
EP	ELECTRICAL POWER PANEL - SEE ELECTRICAL DRAWINGS
FT	CONCRETE FOOTING - SEE STRUCTURAL
IG-1	1" INSULATED LOW-E CLEAR GLAZING PANELS, DUAL SEALED UNITS.
L1	OUTDOOR WALL SCONCE, FLUSH MOUNT, SEE ELECTRICAL
L2	OUTDOOR WALL SCONCE OVER SERVICE DOOR, SEE ELECTRICAL
L3	SHALLOW PROJECTION RECESSED CAN LIGHTING TYPE E- SEE ELECTRICAL SHEETS FOR SPECS
L4	HABIT ILLUMINATED SIGN - STACKED LOGO
L5	HABIT MESA STANDARD ILLUMINATED LOGO
L6	SLEEP NUMBER STANDARD LOGO
L-7	EXTERIOR LIGHTING
LV-1	RTU SCREEN, LOUVER W/ COVER TRIM/ COLOR ALMOND
M1	RTU#1, TYPICAL RTU LOCATION SHOWN - REFER TO TENANT CONSTRUCTION DOCUMENTS FOR EXACT LOCATION OF ALL HVAC EQUIPMENT AND PENETRATION.
M-7	AIR CURTAIN AT DRIVE-THRU WINDOW, SEE RCP NOTE #4 AND M2-01 FOR SPECS
SC1	CANOPY FRAME
SC4	CANOPY FRAME
SCDT	CANOPY FRAME - DRIVE THRU
ST1	STONE SWEEP, SEE HAD WITH DETAILS
W2	COMMERCIAL, DOUBLE SLIDE THERMAL ALUMINUM WINDOW

Consultant

[illegible]

NO	DAT	REVISIONS/ISSUANCE
----	-----	--------------------

PROFESSIONAL CERTIFICATION:
I CERTIFY THAT THESE DOCUMENTS WERE
PREPARED OR APPROVED BY ME, AND THAT I AM A
DULY LICENSED ARCHITECT UNDER THE LAWS OF
THE STATE OF ARIZONA. LICENSE NUMBER 59402.



SEA

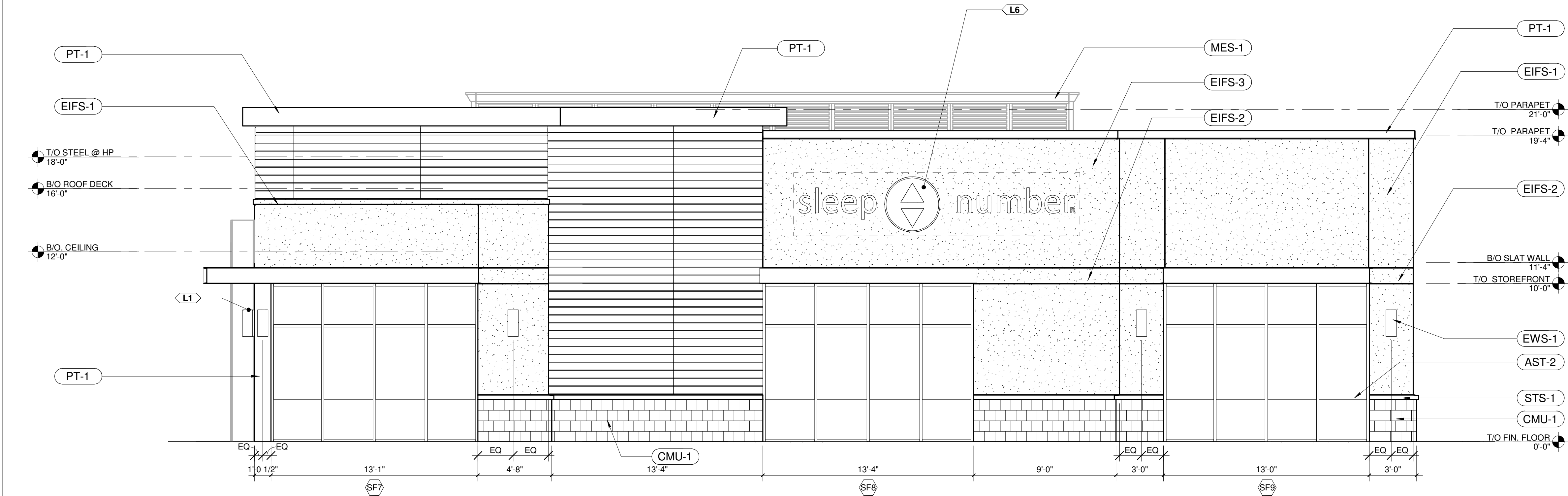
DATE	06/19/19
PROJECT	DXU#17-264
SCALE	1/4" = 1'-0"
DRAWN	DTE
CHECKED	BO
APPROVED	ES

A3-01

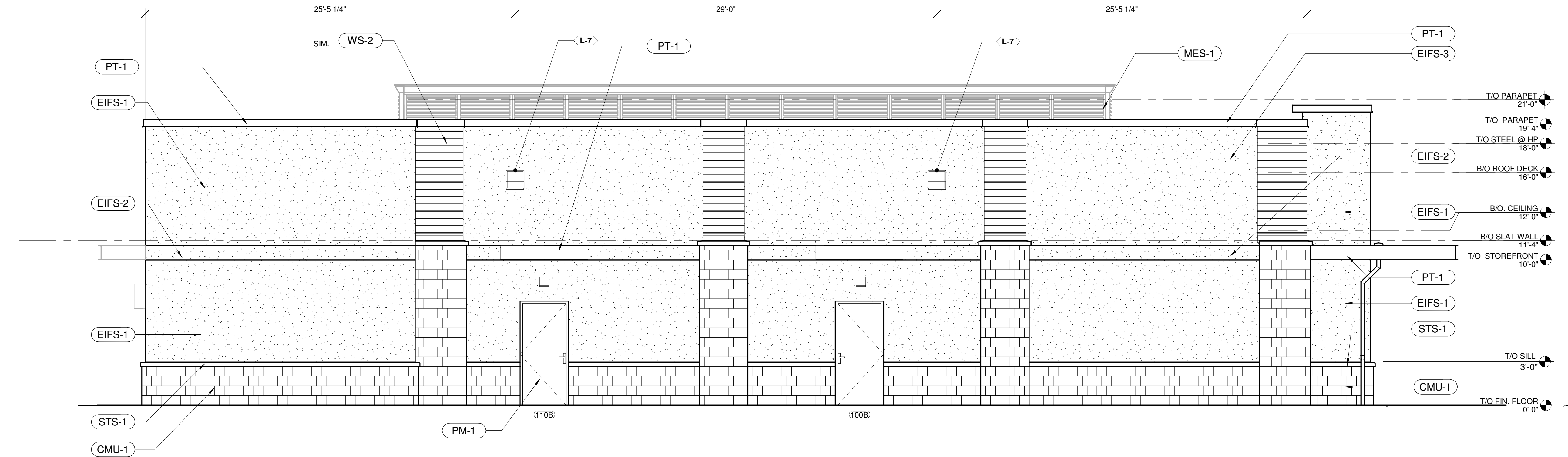
© 2019 DXU-STUDIO, LLC. All rights reserved.



SCALE: 1/4" = 1'-0



1 SOUTH ELEVATION
SCALE: 1/4" = 1'-0"



2 EAST ELEVATION
SCALE: 1/4" = 1'-0"

MATERIALS			
COD	DESCRIPTION	MFR	MODEL
AST-1	ALUMINUM STOREFRONT SYSTEM COLOR: SATIN BLACK	TBD	
AST-2	CLEAR ANODIZED ALUMINUM, MULLION TYP	TBD	
CMU-1	SPLIT FACE CMU, COLOR GREY	YORK BUILDING PRODUCTS	SPLIT FACE CMU COLOR 518 FLINT
EIFS-1	EIFS, COMPLETE FINISH, DRYVIT COLOR 615A TATTLETALE	DRYVIT	COLOR 615A TATTLETALE
EIFS-2	EIFS, COMPLETE FINISH, DRYVIT, COLOR 450A CLOVER.	DRYVIT	450A CLOVER
EIFS-3	EIFS, COMPLETE FINISH, COLOR BISQUE	DRYVIT	COLOR BISQUE
EWS-1	MTL BRONZE FINISH		BY MANUFACTUR ER
FB-2	SHADDERPORTS COVERINGS LINEN FINISH		
IG-2	1 IN CLEAR, TEMPERED INSULATED LOW-E, WITH WRITTEN VERIFICATION FROM GLASS COMPANY, DUAL SEALED UNITS, SEE SCHED.	KAWNEER	LOW-E INSULATED TEMPERED GLAZING
MES-1	PAINTING FINISH COAT, STANDARD, COLOR SLATE GREY	CITYSCAPE S/ SHERWIN WILLIAMS	STANDARD COLOR SLATE GREY
PM-1	BLACK PAINTING, MATTE FINISH, OVER GALVANIZED MTL SURFACE	SHERWIN WILLIAMS	BLACK
WD-3	WOOD, NATURAL CEDAR (SHADDERPORTS STRUCTURE)		
WS-1	HORIZONTAL COMPOSITE CLADDING, ULTRASHIELD, COLOR WESTMINSTER GREY	NEWTECH WOOD	ULTRASHIELD 6X1/2 TONGUE AND GROOVE US09, COLOR WESTMINSTE R GREY
WS-2	HORIZONTAL COMPOSITE CLADDING, ULTRASHIELD COLOR PERUVIAN TEAK	NEWTECH WOOD	ULTRASHIELD 6X1/2 TONGUE AND GROOVE US09, COLOR PERUVIAN TEAK

KEYNOTE LEGEND	
KEYNOTE	DESCRIPTION
4	PREFINISHED GALVANIZED METAL COPING - SEE EXTERIOR FINISH SCHEDULE
12	ROOF SCUTTLE - MANUFACTURER AND TYPE: TBD
14	CURB BY LANDLORD. PROVIDE A CRICKET FOR CURB AS SHOWN.
22	RTU & CURB BY LANDLORD. PROVIDE A CRICKET FOR CURB AS SHOWN - SEE MECH DWGS FOR DETAILS-VERIFY SIZE & LOCATION OF OPENING IN FIELD
23	ROOF CRICKET - TAPERED INSULATION - SLOPE TO SCUPPERS 1" PER/FT, TYP
24	PROVIDE 24"x24"x1/2" THICK MIN. SKID RESISTANT ROOF WALK - SEE SPECS FOR DETAILS
25	SINGLE PLY(TPO) ROOFING SYSTEM - SEE DETAIL #2 THIS SHEET & SPECIFICATIONS FOR DETAILS.

Municipal Approval



THOMAS ENGLISH
725 E. 65TH STREET, STE 300
INDIANAPOLIS, IN 46220

Clien

PROPOSED MULTI-TENANT DEVELOPMENT

1961 S. VAL VISTA DR
MESA, AZ 85204

Projec



ILLINOIS DESIGN FIRM # 184 006688

Architect of

THESE DRAWINGS AND SPECIFICATIONS ARE THE CONFIDENTIAL AND
PROPRIETARY PROPERTY OF DXU LLC, AND SHALL NOT BE COPIED OR
REPRODUCED WITHOUT WRITTEN AUTHORIZATION.

Consultan

NO DAT REVISIONS/ISSUANCE

PROFESSIONAL CERTIFICATION:
I CERTIFY THAT THESE DOCUMENTS WERE
PREPARED OR APPROVED BY ME, AND THAT I AM A
DULY LICENSED ARCHITECT UNDER THE LAWS OF
THE STATE OF ARIZONA, LICENSE NUMBER 59402.



SEAL

FOR PERMIT/ FOR BID

DATE 06/19/19
PROJECT DXU#17-264
SCALE 1/4" = 1'-0"
DRAWN DTE
CHECKED BG
APPROVED ES

EXTERIOR ELEVATIONS

A3-02

PROPOSED MULTI-TENANT DEVELOPMENT

Projec

ILLINOIS DESIGN FIRM # 184.006688

THESE DRAWINGS AND SPECIFICATIONS ARE THE CONFIDENTIAL AND PROPRIETARY PROPERTY OF DXU LLC. AND SHALL NOT BE COPIED OR REPRODUCED WITHOUT WRITTEN AUTHORIZATION.

[illegible]

PROFESSIONAL CERTIFICATION:
I CERTIFY THAT THESE DOCUMENTS WERE
PREPARED OR APPROVED BY ME, AND THAT I AM A
DULY LICENSED ARCHITECT UNDER THE LAWS OF
THE STATE OF ARIZONA, LICENSE NUMBER 59402.

PROFESSIONAL CERTIFICATION:
I CERTIFY THAT THESE DOCUMENTS WERE
PREPARED OR APPROVED BY ME, AND THAT I AM A
DULY LICENSED ARCHITECT UNDER THE LAWS OF
THE STATE OF ARIZONA, LICENSE NUMBER 59402.



DATE 06/19/19

DATE 06/19/19

PROJECT	DXU#17-264
---------	------------

SCALE

DRAWN	DTE
-------	-----

CHECKED BG

APPROVED ES

A1-05



TRASH ENCLOSURE



PATIO - SHADDERPORTS



PATIO - SHADDERPORTS



SITE PERSPECTIVE

Thomas English
Retail Real Estate

THOMAS ENGLISH
725 E. 65TH STREET, STE 300
Indianapolis, IN 46220

PROPOSED MULTI-TENANT DEVELOPMENT

1961 S. VAL VISTA DR
MESA, AZ 85204

Projec

DXU
ARCHITECTS
412 S. Wells Street, 2nd Floor, Chicago, IL 60607
P: 312 955 0334 www.dxuarch.com

ILLINOIS DESIGN FIRM # 184.006688

Architect of

THESE DRAWINGS AND SPECIFICATIONS ARE THE CONFIDENTIAL AND PROPRIETARY PROPERTY OF DXU LLC. AND SHALL NOT BE COPIED OR REPRODUCED WITHOUT WRITTEN AUTHORIZATION.

Consultan

[illegible]

PROFESSIONAL CERTIFICATION:
I CERTIFY THAT THESE DOCUMENTS WERE
PREPARED OR APPROVED BY ME, AND THAT I AM A
DULY LICENSED ARCHITECT UNDER THE LAWS OF
THE STATE OF ARIZONA, LICENSE NUMBER 59402.



SEAL

FOR PERMIT/ FOR BID

DATE	06/19/19
PROJECT	DXU#17-264
SCALE	
DRAWN	DTE
CHECKED	BG
APPROVED	ES

SITE - PERSPECTIVES

A1-05