

# **Intergovernmental Agreement**

City of Mesa and Town of Queen Creek

---

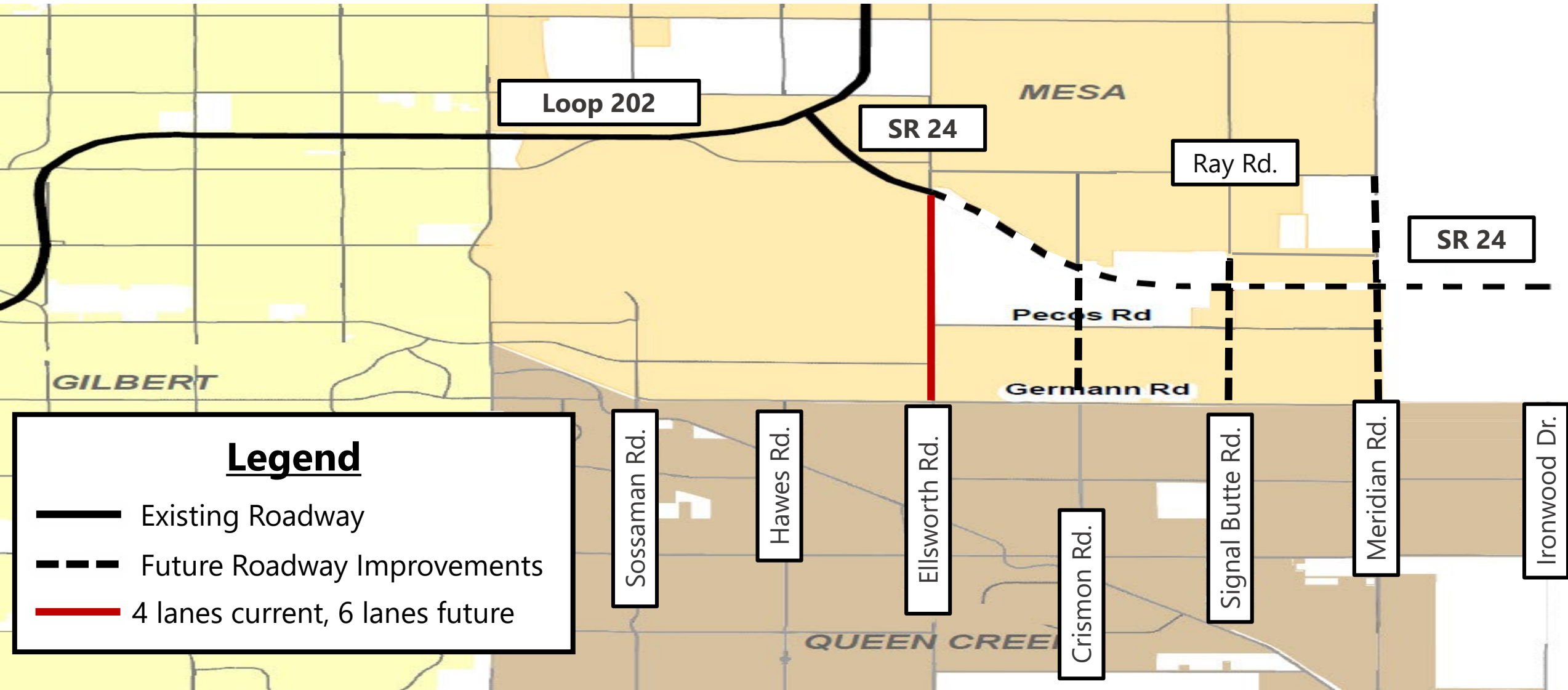
City Council Study Session  
6/13/2019

RJ Zeder, Transportation Director  
Erik Guderian, Deputy Transportation Director



- Two (2) Public Meetings held as part of preparing the Southeast Mesa Transportation and Land Use Plan
- Strong support expressed for additional north and south traffic capacity in southeast Mesa
- The purpose of this Intergovernmental Agreement with The Town of Queen Creek is to add roadway between our two communities

# North/South Roadway Needs





# IGA Overview: Signal Butte Rd.

- **South Signal Butte Rd. Improvements:** Queen Creek to pay for roadway construction of Germann Rd. to Pecos Rd (**\$7M**)
- **North Signal Butte Rd. Improvements:** Queen Creek option to pay for roadway construction of Pecos Rd. to State Route 24 (**\$5M**), if City funds are not available at the time the project is ready for construction
- City of Mesa has until 2030 to repay the money with no interest

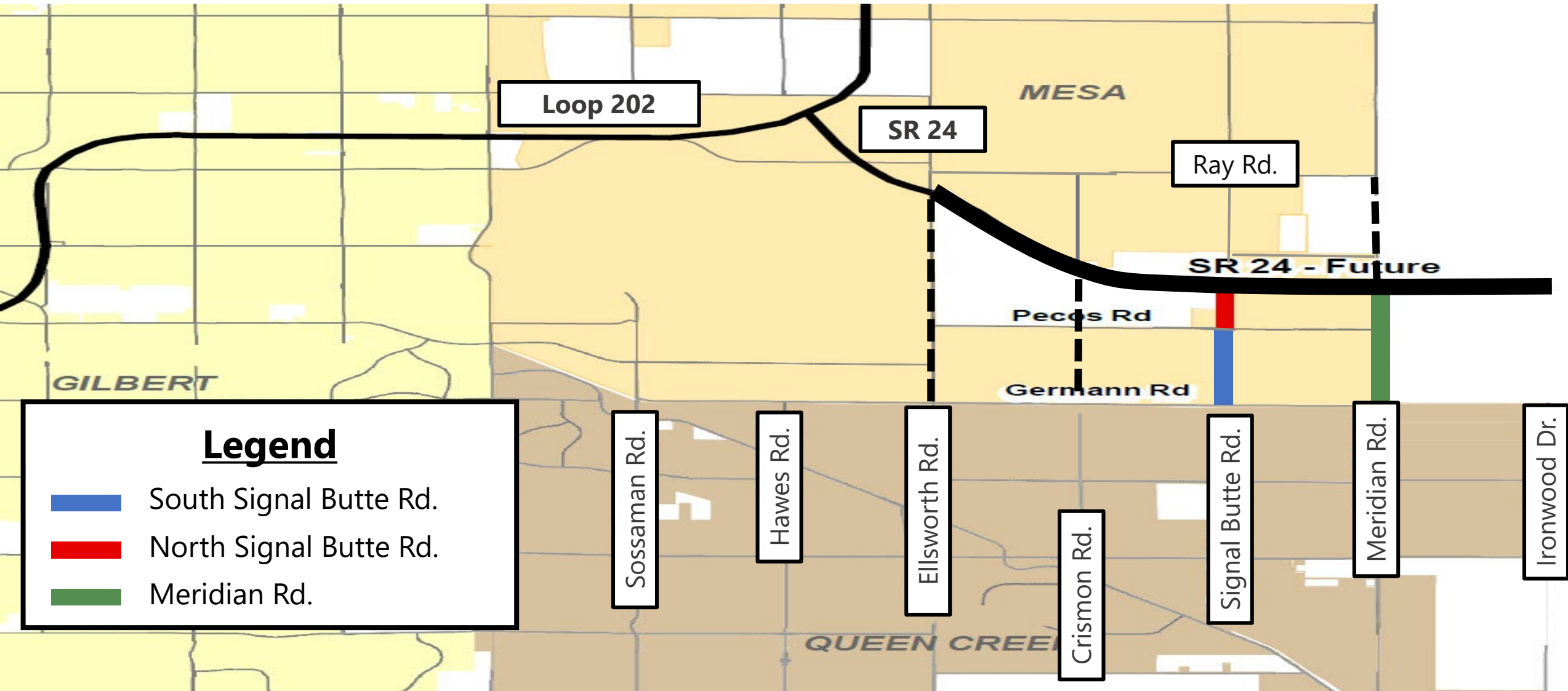


# IGA Overview: Meridian Rd.



- Queen Creek shall fund design, land acquisition, and construction of the Meridian Rd. Improvements at its sole expense
- The alignment for Meridian Rd. must be agreed to by both Mesa and Queen Creek
- Meridian Rd. improvements shall be maintained and operated by Queen Creek after construction completion



# IGA Overview: Proposed Improvements



## Legend

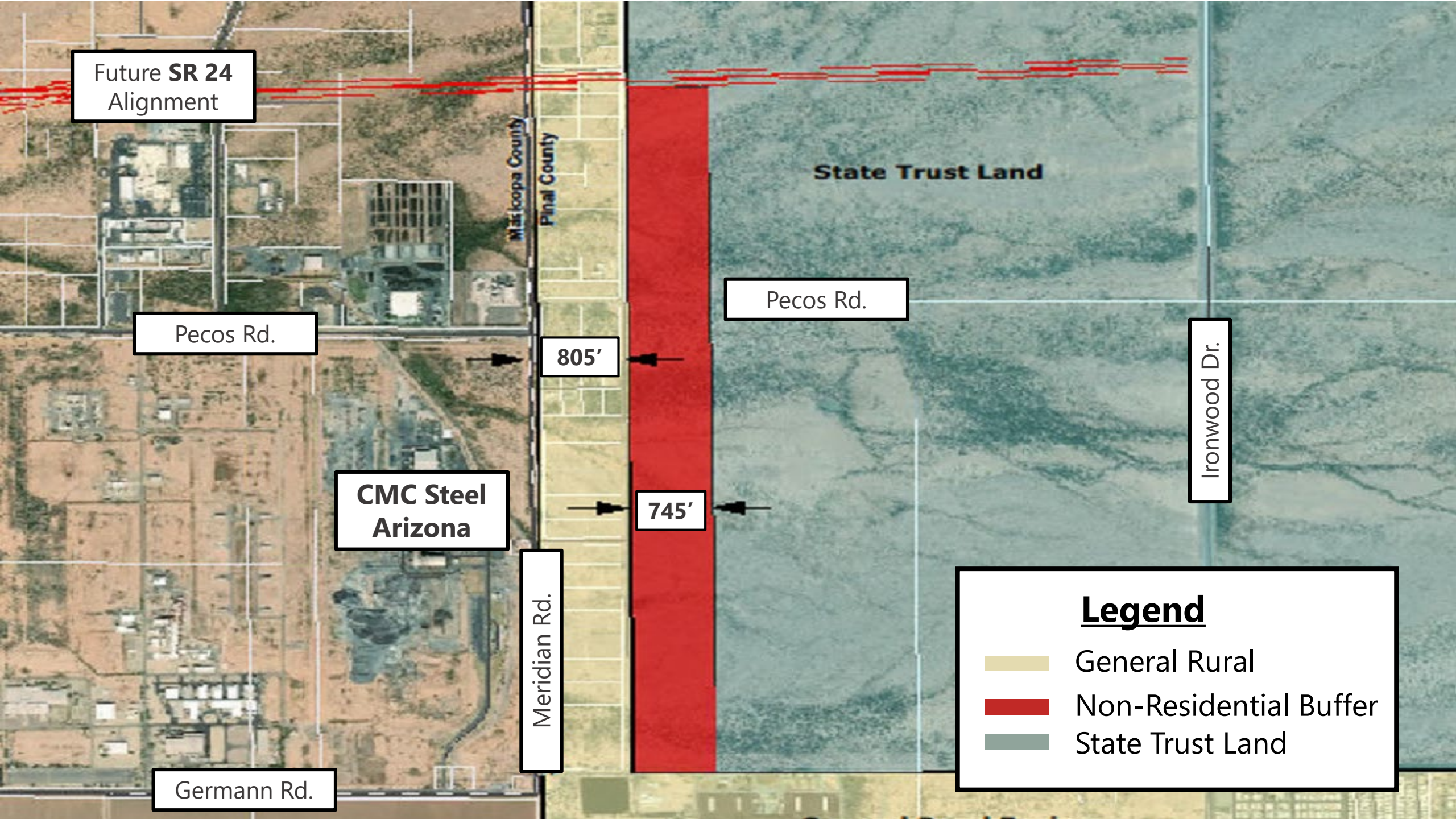
-  South Signal Butte Rd.
-  North Signal Butte Rd.
-  Meridian Rd.

IGA includes land use protections at the request of the City of Mesa to help protect industries west of Meridian Rd.

## **Non-Residential Buffer:**

- Prevents Queen Creek from increasing density on the residentially-zoned lots east of Meridian Rd
- Queen Creek will support efforts to obtain deed restrictions on Arizona State Trust Land that will provide a buffer for Mesa's industrial businesses and aviation easements for Boeing
- Future homeowners will be required to sign a waiver agreement recognizing the nearby industrial uses





Future **SR 24**  
Alignment

Pecos Rd.

**CMC Steel  
Arizona**

Germann Rd.

Maskopca County  
Pinal County

Meridian Rd.

805'

745'

Pecos Rd.

State Trust Land

Ironwood Dr.

**Legend**

- General Rural
- Non-Residential Buffer
- State Trust Land

Staff recommends that Council approve the IGA and the Resolution on the June 17, 2019 Council Agenda authorizing the City Manager to execute this IGA on behalf of the City.

# Questions/Discussion